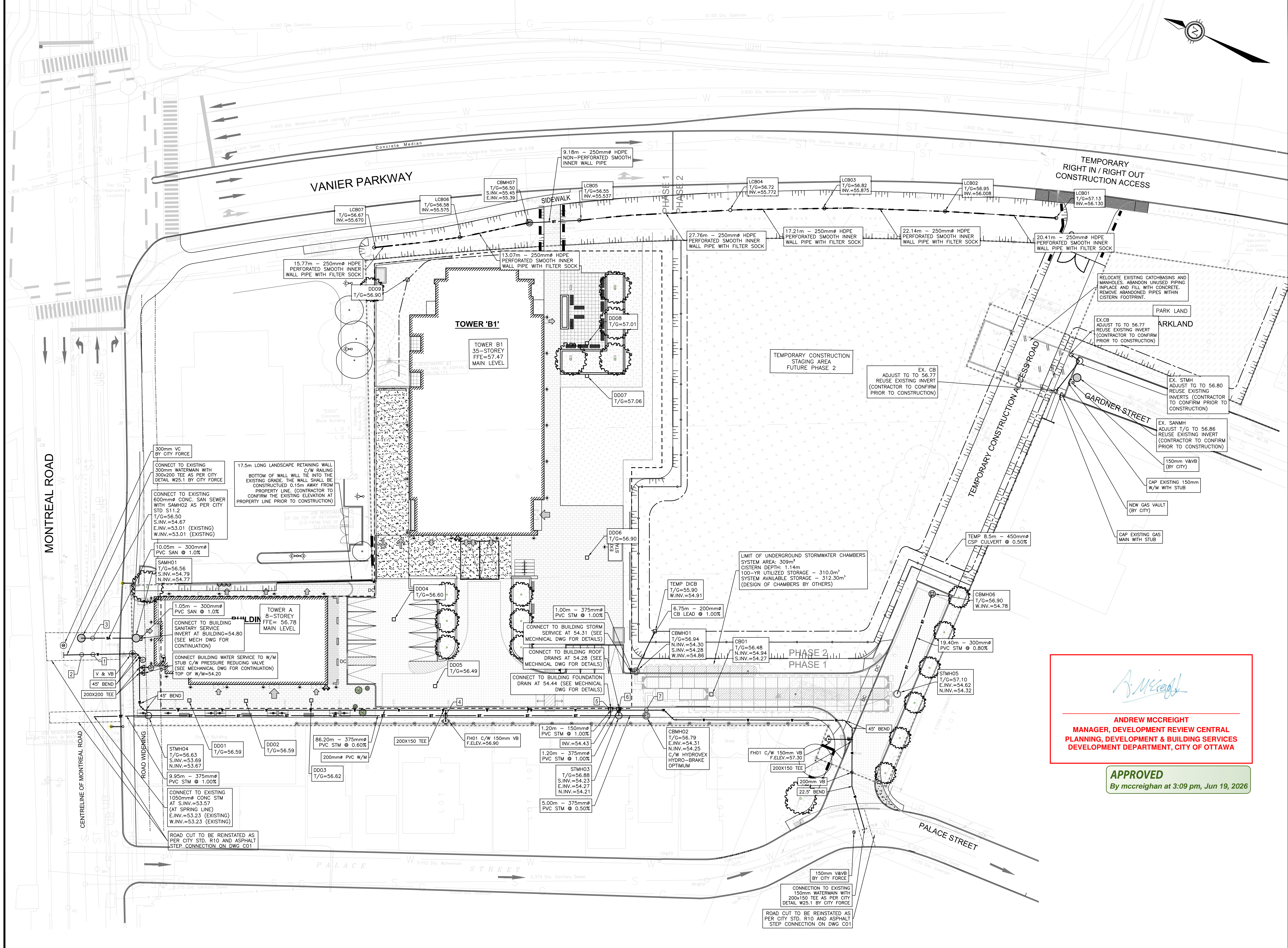


**APPROVED**  
 By mccreight at 3:09 pm, Jun 19, 2026

**ANDREW MCCREIGHT**  
 MANAGER, DEVELOPMENT REVIEW CENTRAL  
 PLANNING, DEVELOPMENT & BUILDING SERVICES  
 DEVELOPMENT DEPARTMENT, CITY OF OTTAWA

<p><b>GENERAL NOTES:</b>                  THE ENGINEER WAIVES ANY AND ALL RESPONSIBILITY AND FOLLOW THE PLANS SPECIFICATIONS AND THE DESIGN INTENT THEY CONVEY. OR FOR PROBLEMS WHICH ARISE FROM GUIDANCE WITH RESPECT TO ANY ERRORS, OMISSIONS, INCONSISTENCIES, AMBIGUITIES OR CONFLICTS WHICH ARE CONSIDERED TO BE THE SOLE RESPONSIBILITY OF THE OWNER OR ANY DISCREPANCIES BETWEEN THE COMMENCED DO NOT SCALE DRAWINGS.</p>																					
<p><b>KEY PLAN</b>                  (Inset map showing the project location within the surrounding urban context.)</p>																					
<p><b>BENCH MARK No. 1 ELEVATION=56.43</b>                  ELEVATIONS SHOWN ON THIS PLAN ARE RELATED TO THE BENCHMARK OF PART 1, PLAN 564112 SHOWN AS HAVING A BEARING OF N82°27'30"W.                  TOWNSHIP: CITY OF OTTAWA</p>																					
<p><b>SUBJECT TO APPROVAL</b></p>																					
<p><b>REVISIONS:</b></p> <table border="1"> <thead> <tr> <th>No.</th> <th>REVISIONS</th> <th>BY</th> <th>DATE</th> </tr> </thead> <tbody> <tr> <td>01</td> <td>ISSUED FOR SPA</td> <td>D.Y.</td> <td>2022-09-13</td> </tr> <tr> <td>02</td> <td>COMMENTS</td> <td>D.Y.</td> <td>2023-04-03</td> </tr> <tr> <td>03</td> <td>REVIEWED AS PER CITY</td> <td>D.Y.</td> <td>2023-06-14</td> </tr> <tr> <td>04</td> <td>COMMENTS</td> <td>D.Y.</td> <td>2024-02-02</td> </tr> </tbody> </table>		No.	REVISIONS	BY	DATE	01	ISSUED FOR SPA	D.Y.	2022-09-13	02	COMMENTS	D.Y.	2023-04-03	03	REVIEWED AS PER CITY	D.Y.	2023-06-14	04	COMMENTS	D.Y.	2024-02-02
No.	REVISIONS	BY	DATE																		
01	ISSUED FOR SPA	D.Y.	2022-09-13																		
02	COMMENTS	D.Y.	2023-04-03																		
03	REVIEWED AS PER CITY	D.Y.	2023-06-14																		
04	COMMENTS	D.Y.	2024-02-02																		
<p><b>LICENCED PROFESSIONAL ENGINEER</b>                  D. B. YANG                  100230588                  2024-02-02                  PROVINCE OF ONTARIO</p>																					
<p><b>CLIENT:</b>                  2705460 ONTARIO INC.                  C/O ANAND AGGARWAL                  MANOR PARK MANAGEMENT                  231 BRITANNY DRIVE, SUITE D                  OTTAWA, ON K1K 0R8</p>																					
<p><b>PROJECT:</b>                  112 MONTREAL ROAD                  RESIDENTIAL DEVELOPMENT</p>																					
<p><b>DRAWING TITLE:</b>                  GRADING PLAN</p>																					
<p><b>PROJECT NO.:</b> 194-01935-00  <b>DRAWING NO.:</b> C02</p>																					



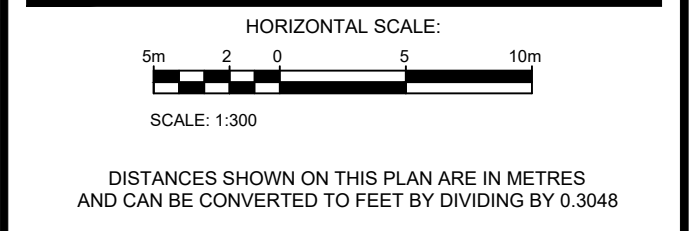
**GENERAL NOTES:**  
 THE ENGINEER WAIVES ANY AND ALL RESPONSIBILITY AND LIABILITY FOR PROBLEMS WHICH ARISE FROM FAILURE TO FOLLOW THE PLANS, SPECIFICATIONS AND THE DESIGN INTENT THEY CONVEY, OR FOR PROBLEMS WHICH ARISE FROM OTHERS FAILURE TO OBTAIN AND/OR FOLLOW THE ENGINEERS GUIDANCE WITH RESPECT TO ANY ERRORS, OMISSIONS, INCONSISTENCIES, AMBIGUITIES OR CONFLICTS WHICH ARE ALLEGED.  
 CONTRACTOR TO VERIFY ALL DIMENSIONS AND NOTIFY THE ENGINEER OF ANY DISCREPANCIES BEFORE WORK COMMENCES. DO NOT SCALE DRAWINGS.



**SUBJECT TO APPROVAL**

**BENCH MARK No.1 ELEVATION=56.43**  
 ELEVATIONS SHOWN ON THIS PLAN ARE RELATED TO GEODETIC DATUM AND ARE DERIVED FROM THE WESTERLY LIMIT OF PART 1, PLAN SR-6112 SHOWN AS HAVING A BEARING OF N28°27'30"W.  
 TOWNSHIP: CITY OF OTTAWA

No.	REVISIONS	BY	DATE
04	REVISED AS PER CITY COMMENTS	D.Y.	2024-02-02
03	REVISED AS PER CITY COMMENTS	D.Y.	2023-06-14
02	REVISED AS PER CITY COMMENTS	D.Y.	2023-04-03
01	ISSUED FOR SPA	D.Y.	2022-09-13



**PROFESSIONAL ENGINEER**  
 D. B. YANG  
 100230568  
 2024-02-02  
 PROVINCE OF ONTARIO  
 NOT VALID UNLESS SIGNED AND DATED

**wsp**  
 2611 Queensway Dr. Ottawa, ON Canada K2B 8K2  
 t: 613.829.2800 f: 613.829.8299 www.wspgroup.com

CLIENT: 2705460 ONTARIO INC.  
 C/O ANAND AGGARWAL  
 MANOR PARK MANAGEMENT  
 231 BRITANNY DRIVE, SUITE D  
 OTTAWA, ON K1K 0R8

**rla/architecture**  
 rodrick lahey architect inc.  
 55 beach street, ottawa, ontario k1s 3k4  
 t: 613.734.9932 f: 613.734.1209 d: 613.734.1209

**ANNIS, O'SULLIVAN, VOLLEBECK**  
 Ontario Land Surveyors  
 14 CONROUSE GATE, SUITE 100, NEPEAN, ONTARIO, K2E 7S8  
 TEL: (613) 727-0850 FAX: (613) 727-1079

DESIGNED BY: D.Y. DRAWN BY: J.T. APPROVED BY: D.Y.  
 PROJECT: 112 MONTREAL ROAD  
 RESIDENTIAL DEVELOPMENT

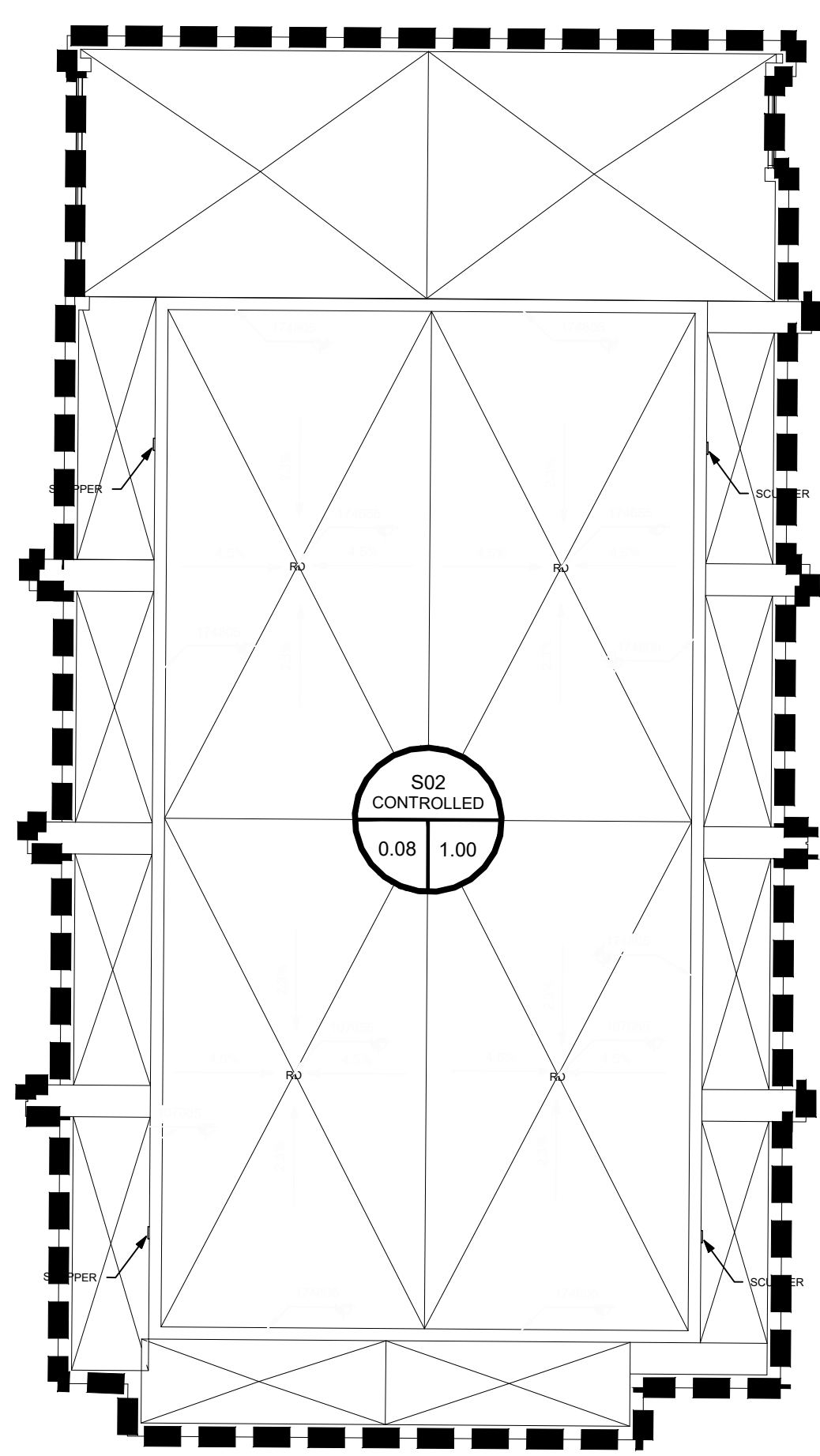
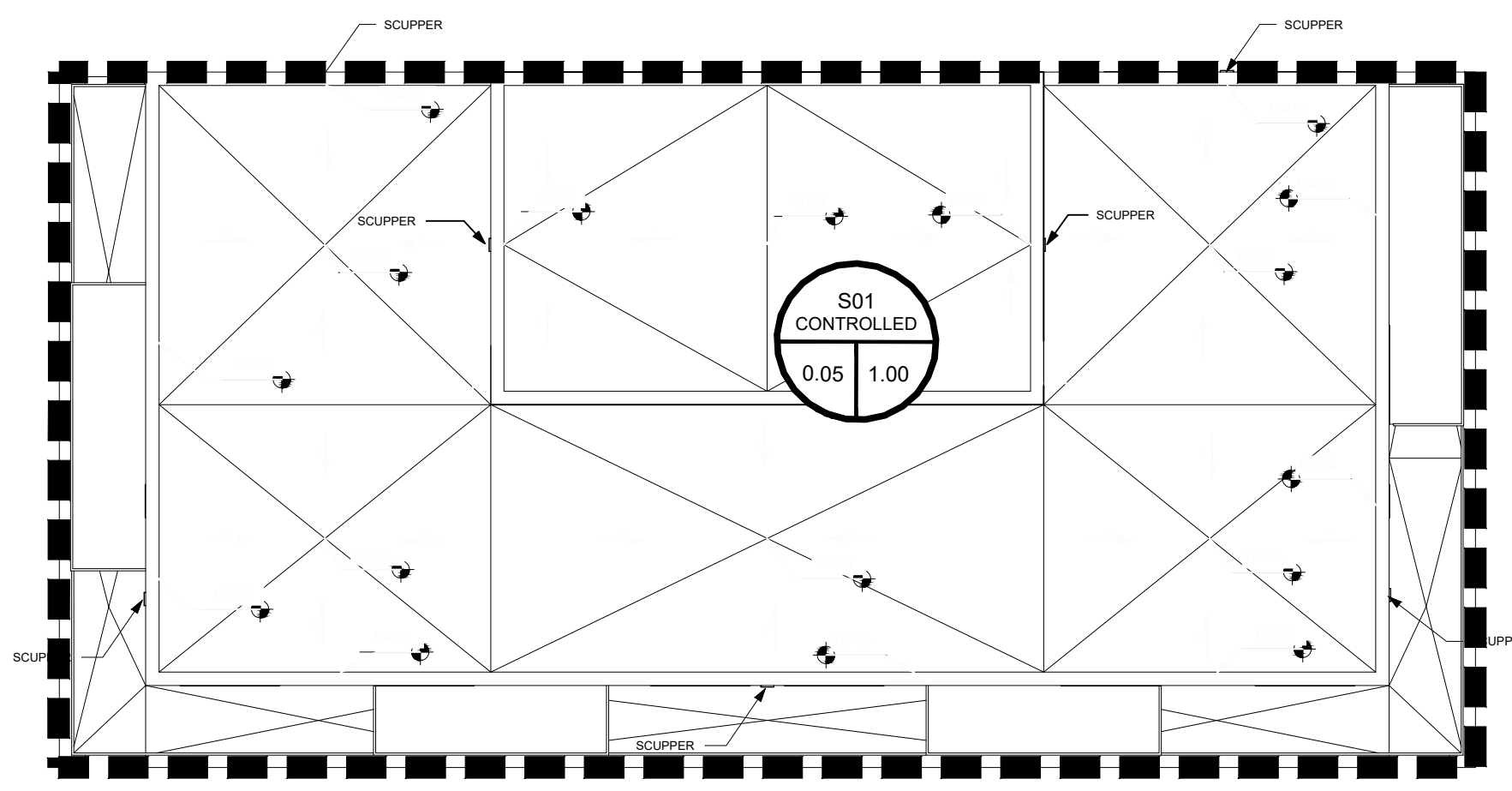
DRAWING TITLE: **SERVICING PLAN**  
 PROJECT NO: 19M-01935-00 DRAWING NO: **C03**

*A. McCreight*  
**ANDREW MCCREIGHT**  
 MANAGER, DEVELOPMENT REVIEW CENTRAL  
 PLANNING, DEVELOPMENT & BUILDING SERVICES  
 DEVELOPMENT DEPARTMENT, CITY OF OTTAWA

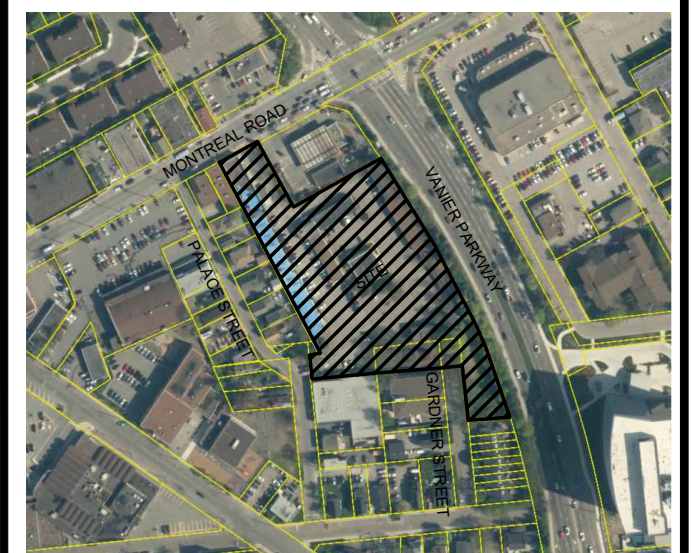
**APPROVED**  
 By McCreight at 3:09 pm, Jun 19, 2026

FILENAME: V:\15\_114\19M-01935-00 - 112 Montreal Road - Serv Plan01.dwg  
 PLOTDATE: Feb 02, 2024 - 3:36pm, c:\wsp\95941

D07-12-22-0138  
 #18856



GENERAL NOTES:  
 THE ENGINEER WAIVES ANY AND ALL RESPONSIBILITY AND LIABILITY FOR PROBLEMS WHICH ARISE FROM FAILURE TO FOLLOW THE PLANS, SPECIFICATIONS AND THE DESIGN INTENT THEY CONVEY, OR FOR PROBLEMS WHICH ARISE FROM OTHERS FAILURE TO OBTAIN AND/OR FOLLOW THE ENGINEERS GUIDANCE WITH RESPECT TO ANY ERRORS, OMISSIONS, INCONSISTENCIES, AMBIGUITIES OR CONFLICTS WHICH ARE ALLEGED.  
 CONTRACTOR TO VERIFY ALL DIMENSIONS AND NOTIFY THE ENGINEER OF ANY DISCREPANCIES BEFORE WORK COMMENCES. DO NOT SCALE DRAWINGS.

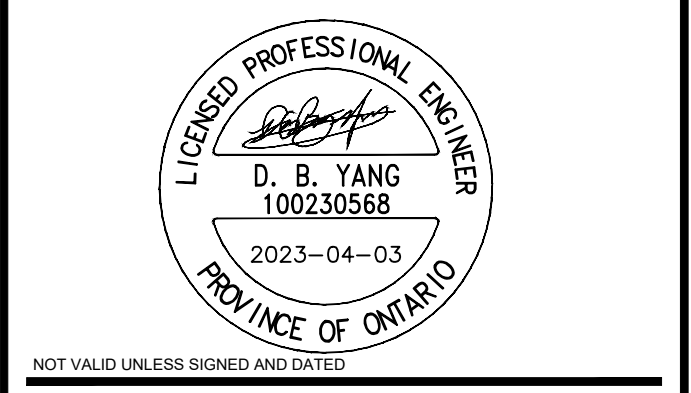
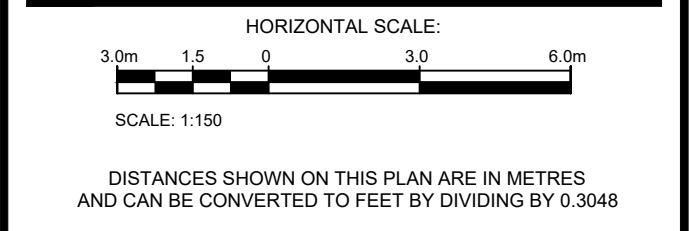


KEY PLAN (N.T.S.)

SUBJECT TO APPROVAL

**BENCH MARK No.1 ELEVATION=56.43**  
 ELEVATIONS SHOWN ON THIS PLAN ARE RELATED TO GEODETIC DATUM AND ARE DERIVED FROM THE WESTERLY LIMIT OF PART 1, PLAN 5R-6112 SHOWN AS HAVING A BEARING OF N28°27'30"W.  
 TOWNSHIP: CITY OF OTTAWA

No.	REVISIONS	BY	DATE
02	REVISED AS PER CITY COMMENTS		D.Y. 2023-04-03
01	ISSUED FOR SPA		D.Y. 2022-09-13



**wsp**  
 2611 Queensview Dr. Ottawa, ON Canada K2B 8K2  
 t: 613.829.2800 f: 613.829.8299 www.wspgroup.com

CLIENT  
 2705460 ONTARIO INC.  
 C/O ANAND AGGARWAL  
 MANOR PARK MANAGEMENT  
 231 BRITTANY DRIVE, SUITE D  
 OTTAWA, ON K1K 0R8

**rla/architecture**  
 roderick lahey architect inc.  
 55 beach street, ottawa, ontario k1s 3j6  
 t: 613.734.9932 f: 613.734.1209 d: rla@rlaarchitect.com

ANNIS, O'SULLIVAN, VOLLEBECK  
 Ontario Land Surveyors  
 14 CONCURSIVE GATE, SUITE 400, NEPEAN, ONTARIO, K2E 7S8  
 TEL: (613) 727-0850 FAX: (613) 727-1079

DESIGNED BY: D.Y. DRAWN BY: J.T. APPROVED BY: D.Y.

PROJECT  
 112 MONTREAL ROAD  
 RESIDENTIAL DEVELOPMENT

DRAWING TITLE  
 ROOF DRAINAGE PLAN

PROJECT NO. 19M-01935-00 DRAWING NO. C04A

**WATTS® Adjustable Accutrol Weir** Adjustable Flow Control for Roof Drains  
 Tag: \_\_\_\_\_

**ADJUSTABLE ACCUTROL (for Large Sump Roof Drains only)**  
 For more flexibility in controlling flow with heads deeper than 2", Watts Drainage offers the Adjustable Accutrol. The Adjustable Accutrol Weir is designed with a single parabolic opening that can be covered to restrict flow above 2" of head to less than 5 gpm per inch, up to 6" of head. To adjust the flow rate for depths over 2" of head, set the slot in the adjustable upper cone according to the flow rate required. Refer to Table 1 below.  
 Note: Flow rates are directly proportional to the amount of weir opening that is exposed.

**EXAMPLE:**  
 For example, if the adjustable upper cone is set to cover 1/2 of the weir opening, flow rates above 2" of head will be restricted to 2-1/2 gpm per inch of head.  
 Therefore, at 3" of head, the flow rate through the Accutrol Weir that has 1/2 the slot exposed will be:  
 [5 gpm (per inch of head) x 2 inches of head] + 2-1/2 gpm (for the third inch of head) = 12-1/2 gpm.

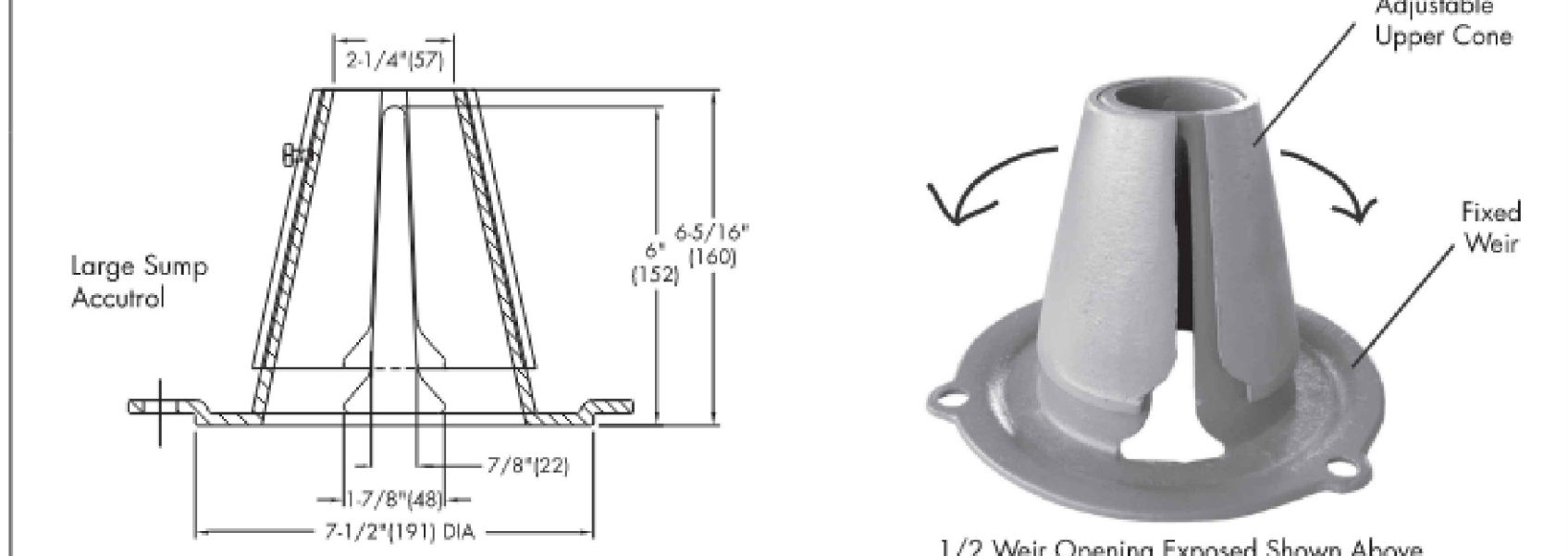


TABLE 1. Adjustable Accutrol Flow Rate Settings

Weir Opening Exposed	Flow Rate (gallons per minute)					
	1"	2"	3"	4"	5"	6"
Fully Exposed	5	10	15	20	25	30
3/4	5	10	13.75	17.5	21.25	25
1/2	5	10	12.5	15	17.5	20
1/4	5	10	11.25	12.5	13.75	15
Closed	5	5	5	5	5	5

Job Name \_\_\_\_\_ Contractor \_\_\_\_\_  
 Job Location \_\_\_\_\_ Contractor's P.O. No. \_\_\_\_\_  
 Engineer \_\_\_\_\_ Representative \_\_\_\_\_

Watts product specifications in U.S. customary units and metric are approximate and are provided for reference only. For precise measurements, please contact Watts Technical Services. Watts reserves the right to change or modify product design, construction, specifications, or materials without prior notice and without incurring any obligation to make such changes and modifications on Watts products previously or subsequently sold.  
**WATTS®**  
 A Watts Water Technologies Company  
 USA: Tel: (800) 338-2581 • Fax: (828) 248-9029 • Watts.com  
 Canada: Tel: (905) 332-4090 • Fax: (905) 332-7068 • Watts.ca  
 Latin America: Tel: (82) 81-1001-8600 • Fax: (82) 81-8000-7091 • Watts.com  
 ES-WD-RD-ACCUTROLADJ-CAN 1615 © 2016 Watts

**Roof Drains**

Catchment ID	Status	Common Name	Area (ha.)	Area (m <sup>2</sup> )	Area to Cistern 1 (m <sup>2</sup> )	Area controlled by Rooftop (m <sup>2</sup> )	WATT Drains		
							Number of Drains Req. (~1 Drain / 150 m <sup>2</sup> )	Area Per Drain (m)	Width / Length (m)
S01	Controlled	Building A	0.05	500	190	310	5	62.00	7.87
S02	Controlled	Building B1	0.081	810	447	363	4	90.75	9.53

METRIC	Flow Rate (m3/sec)					
	25.4	50.8	76.2	101.6	127.0	152.4
Weir opening	0.02540	0.05080	0.07620	0.10160	0.12700	0.15240
Fully Exposed	0.000315451	0.000630902	0.000946353	0.001261804	0.001577255	0.001892706
3/4	0.000315451	0.000630902	0.00086749	0.001104079	0.001340667	0.001577255
1/2	0.000315451	0.000630902	0.000788628	0.000946353	0.001104079	0.001261804
1/4	0.000315451	0.000630902	0.000709765	0.000788628	0.00086749	0.000946353
Closed	0.000315451	0.000315451	0.000315451	0.000315451	0.000315451	0.000315451

Table 3-3: Post-Development Modelling Results (C)

RETURN PERIOD (YEARS)	ROOFTOP MAXIMUM STORAGE VOLUME, PEAK RELEASE RATE <sup>1</sup> , AND PONDING DEPTH						UNCONTROLLED FLOW RATE <sup>2</sup> (L/S)
	TOWER A			TOWER B1			
	(m <sup>3</sup> )	(L/s)	(m)	(m <sup>3</sup> )	(L/s)	(m)	
5	4.5	1.5	0.054	6.4	1.2	0.073	2.9
100	11.5	1.5	0.086	15.4	1.2	0.142	8.3

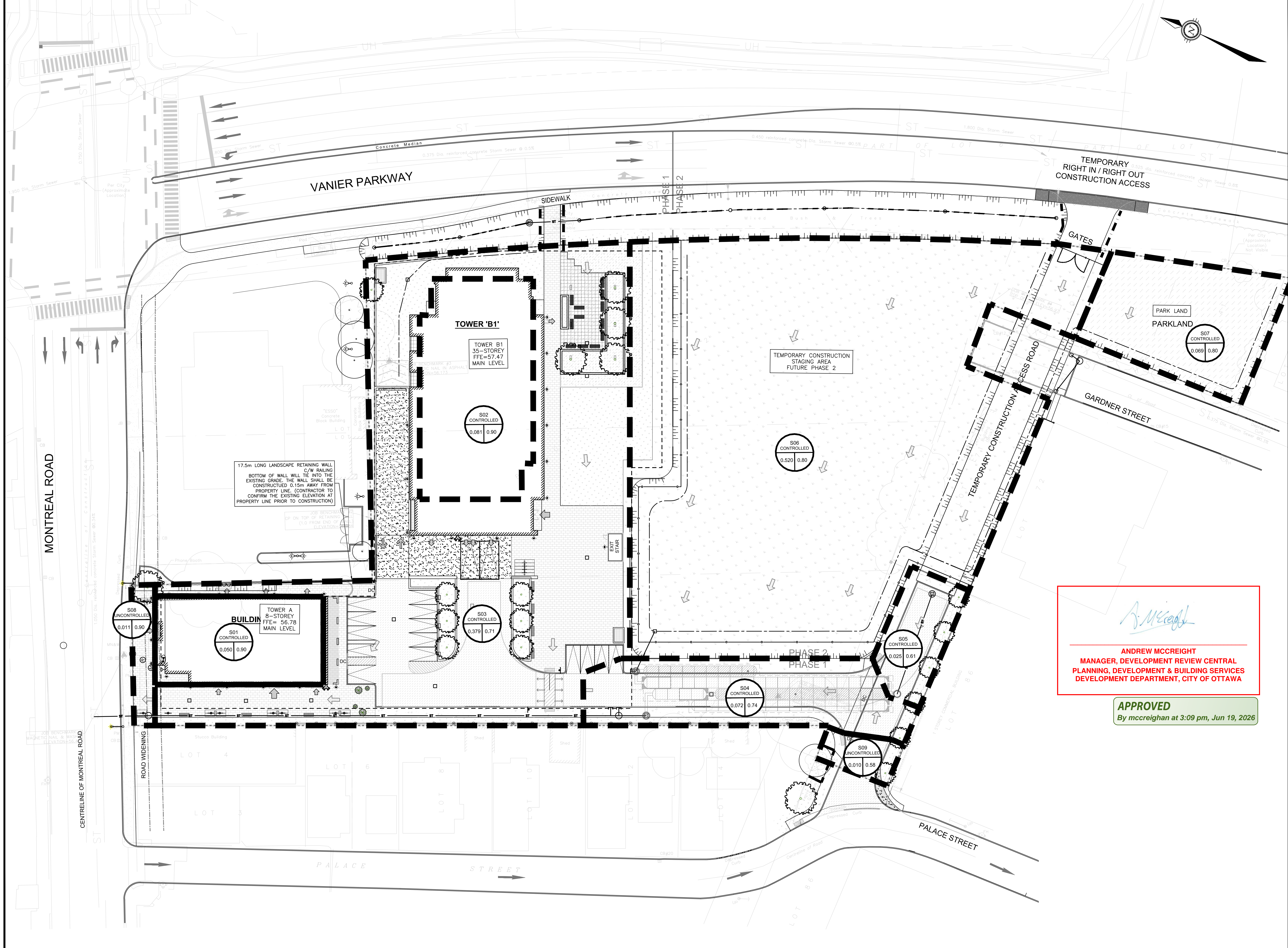
<sup>1</sup> Based on the critical duration resulting in maximum storage utilized on each roof surface  
<sup>2</sup> Based on the critical duration resulting in the maximum flow released from the site

*Andrew McCreight*  
**ANDREW MCCREIGHT**  
 MANAGER, DEVELOPMENT REVIEW CENTRAL  
 PLANNING, DEVELOPMENT & BUILDING SERVICES  
 DEVELOPMENT DEPARTMENT, CITY OF OTTAWA

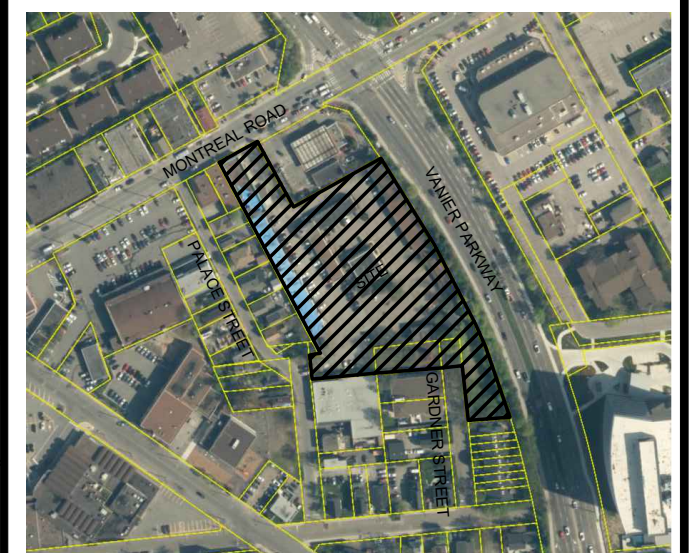
**APPROVED**  
 By mcCreight at 3:09 pm, Jun 19, 2026

FILENAME: V:\15\114\19\04\19\04\19-112 Montreal Road - Site Plan\03\_Drawing\dwg\dwg\191112-01-00\_C\_Roof.dwg  
 PLOTTED: Feb 02, 2024 - 3:36pm, caw089541

D07-12-22-0138



**GENERAL NOTES:**  
 THE ENGINEER WAIVES ANY AND ALL RESPONSIBILITY AND LIABILITY FOR PROBLEMS WHICH ARISE FROM FAILURE TO FOLLOW THE PLANS, SPECIFICATIONS AND THE DESIGN INTENT THEY CONVEY, OR FOR PROBLEMS WHICH ARISE FROM OTHERS' FAILURE TO OBTAIN AND/OR FOLLOW THE ENGINEER'S GUIDANCE WITH RESPECT TO ANY ERRORS, OMISSIONS, INCONSISTENCIES, AMBIGUITIES OR CONFLICTS WHICH ARE ALLEGED.  
 CONTRACTOR TO VERIFY ALL DIMENSIONS AND NOTIFY THE ENGINEER OF ANY DISCREPANCIES BEFORE WORK COMMENCES. DO NOT SCALE DRAWINGS.

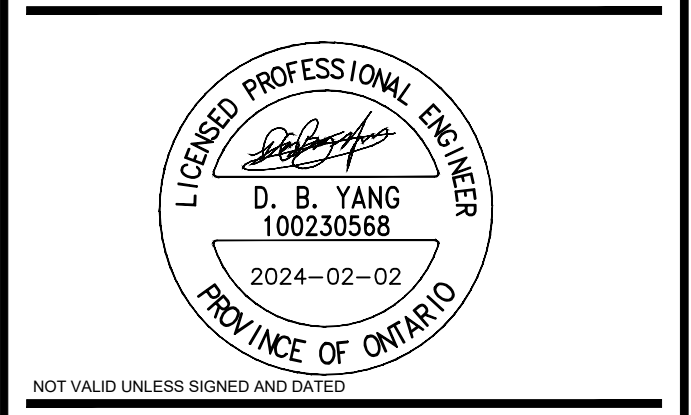
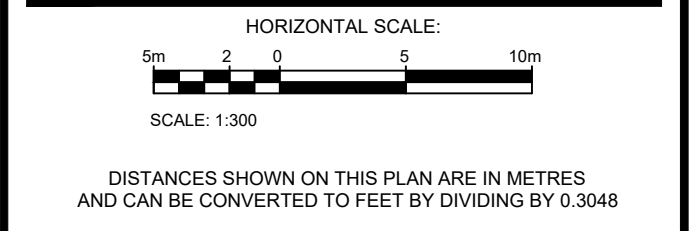


**KEY PLAN**  
(N.T.S.)

**SUBJECT TO APPROVAL**

**BENCH MARK No.1 ELEVATION=56.43**  
 ELEVATIONS SHOWN ON THIS PLAN ARE RELATED TO GEODETIC DATUM AND ARE DERIVED FROM THE WESTERLY LIMIT OF PART 1, PLAN 5R-6112 SHOWN AS HAVING A BEARING OF N28°27'30"W.  
 TOWNSHIP: CITY OF OTTAWA

No.	REVISIONS	BY	DATE
04	REVISED AS PER CITY COMMENTS	D.Y.	2024-02-02
03	REVISED AS PER CITY COMMENTS	D.Y.	2023-06-14
02	REVISED AS PER CITY COMMENTS	D.Y.	2023-04-03
01	ISSUED FOR SPA	D.Y.	2022-09-13



*Andrew McCreight*  
**ANDREW MCCREIGHT**  
 MANAGER, DEVELOPMENT REVIEW CENTRAL  
 PLANNING, DEVELOPMENT & BUILDING SERVICES  
 DEVELOPMENT DEPARTMENT, CITY OF OTTAWA

**APPROVED**  
 By mcreighan at 3:09 pm, Jun 19, 2026

**wsp**  
 2611 Queensview Dr. Ottawa, ON Canada K2B 8K2  
 t: 613.829.2800 f: 613.829.8299 www.wspgroup.com

CLIENT  
 2705460 ONTARIO INC.  
 C/O ANAND AGGARWAL  
 MANOR PARK MANAGEMENT  
 231 BRITTANY DRIVE, SUITE D  
 OTTAWA, ON K1K 0R8

**rla/architecture**  
 roderick lahey architect inc.  
 55 beach street, ottawa, ontario k1s 3j4  
 t: 613.734.9932 f: 613.734.1209 rla@architecture.ca

**ANNIS, O'SULLIVAN, VOLLEBECK**  
 Ontario Land Surveyors  
 14 CONCOURSE GATE, SUITE 100, NEPEAN, ONTARIO, K2E 7S8  
 TEL: (613) 727-0850 FAX: (613) 727-1079

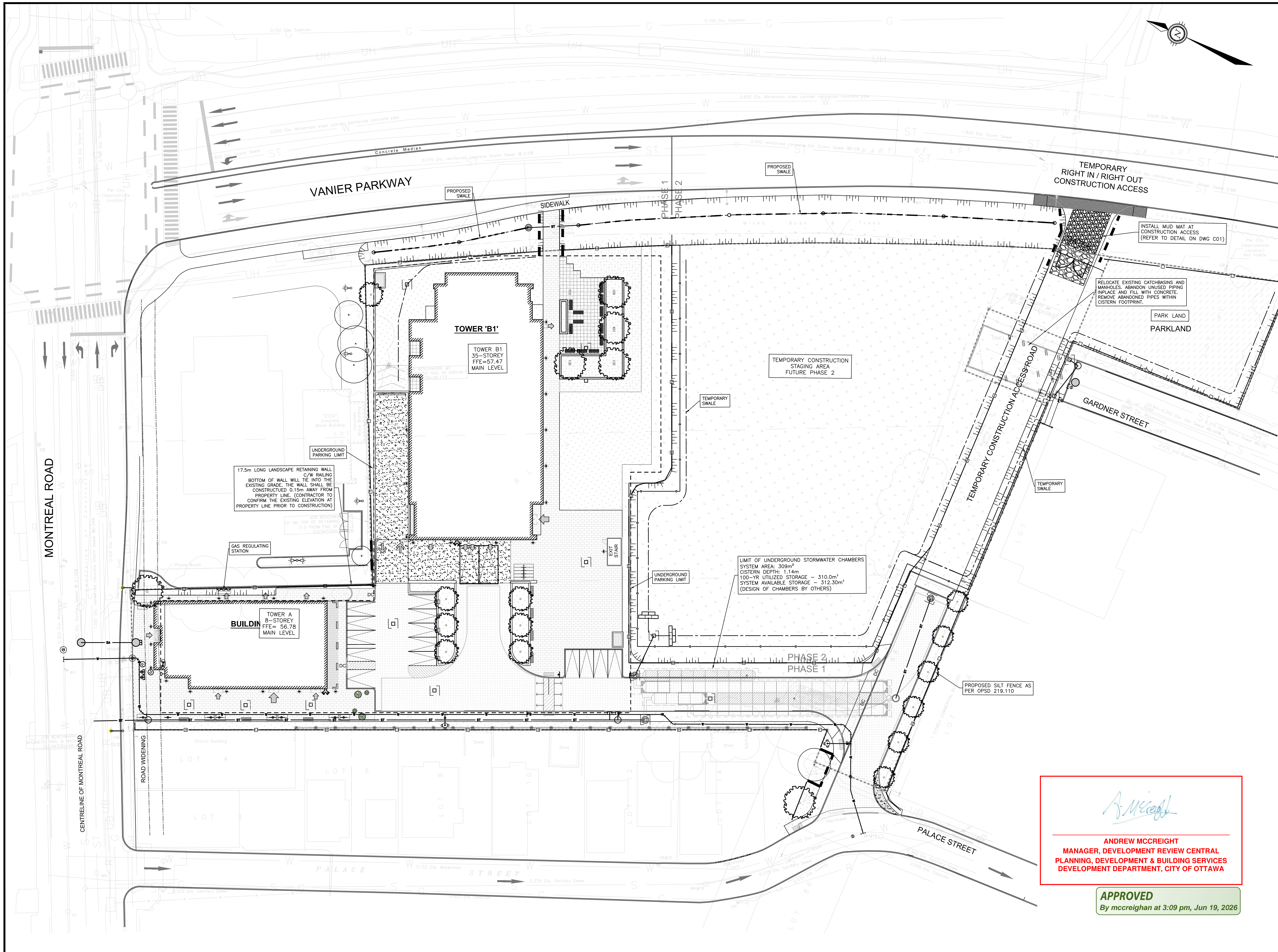
DESIGNED BY: D.Y. DRAWN BY: J.T. APPROVED BY: D.Y.

PROJECT  
 112 MONTREAL ROAD  
 RESIDENTIAL DEVELOPMENT

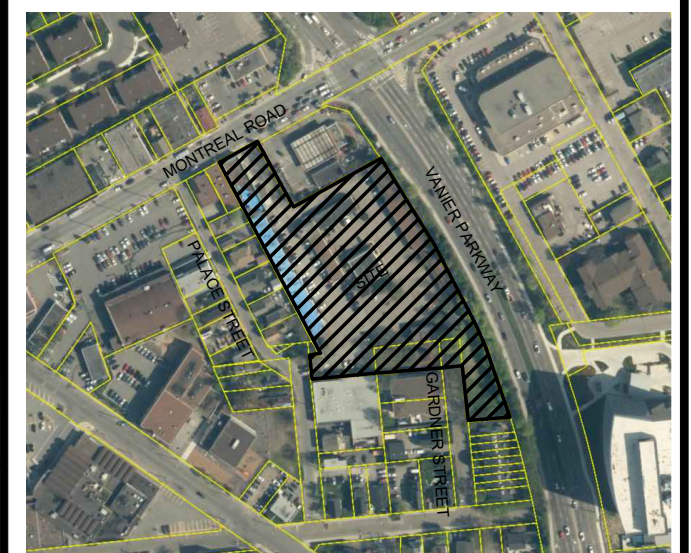
DRAWING TITLE  
 STORM DRAINAGE  
 AREA PLAN

PROJECT NO. 19M-01935-00 DRAWING NO. C04

FILENAME: V:\19\19M-01935-00 - 112 Montreal Road - Site Plan3 Drawing\stormdrainage\19M-01935-00\_C\_DRAWING.dwg  
 PLOTTED: Feb 02, 2024 - 3:37pm, c:\wp95941



**GENERAL NOTES:**  
 THE ENGINEER WAIVES ANY AND ALL RESPONSIBILITY AND LIABILITY FOR PROBLEMS WHICH ARISE FROM FAILURE TO FOLLOW THE PLANS, SPECIFICATIONS AND THE DESIGN INTENT THEY CONVEY, OR FOR PROBLEMS WHICH ARISE FROM OTHERS FAILURE TO OBTAIN AND/OR FOLLOW THE ENGINEERS GUIDANCE WITH RESPECT TO ANY ERRORS, OMISSIONS, INCONSISTENCIES, AMBIGUITIES OR CONFLICTS WHICH ARE ALLEGED.  
 CONTRACTOR TO VERIFY ALL DIMENSIONS AND NOTIFY THE ENGINEER OF ANY DISCREPANCIES BEFORE WORK COMMENCES. DO NOT SCALE DRAWINGS.



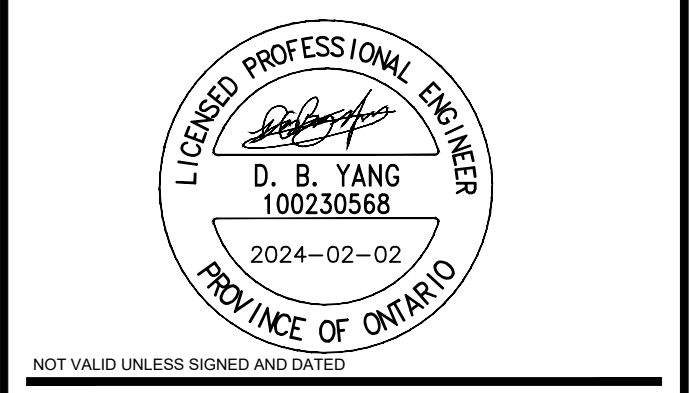
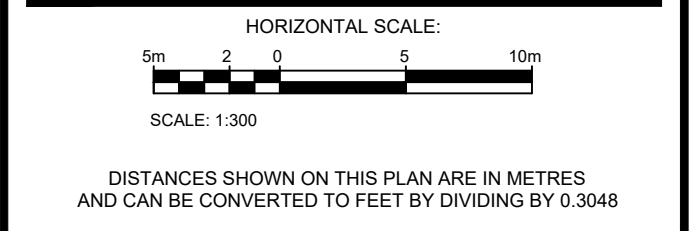
**KEY PLAN**  
(N.T.S.)

**SUBJECT TO APPROVAL**

**BENCH MARK No.1 ELEVATION=56.43**  
 ELEVATIONS SHOWN ON THIS PLAN ARE RELATED TO GEODETIC DATUM AND ARE DERIVED FROM THE WESTERLY LIMIT OF PART 1, PLAN SR-6112 SHOWN AS HAVING A BEARING OF N28°27'30"W.

TOWNSHIP: CITY OF OTTAWA

No.	REVISIONS	BY	DATE
04	REVISED AS PER CITY COMMENTS	D.Y.	2024-02-02
03	REVISED AS PER CITY COMMENTS	D.Y.	2023-06-14
02	REVISED AS PER CITY COMMENTS	D.Y.	2023-04-03
01	ISSUED FOR SPA	D.Y.	2022-09-13



**wsp**

2611 Queensview Dr. Ottawa, ON Canada K2B 8K2  
 t: 613.829.2800 f: 613.829.8299 www.wspgroup.com

CLIENT:

2705460 ONTARIO INC.  
 C/O ANAND AGGARWAL  
 MANOR PARK MANAGEMENT  
 231 BRITTANY DRIVE, SUITE D  
 OTTAWA, ON K1K 0R8

**rla/architecture**  
 roderick lahey architect inc.  
 55 beach street, ottawa, ontario k1s 3j6  
 t: 613.734.9932 f: 613.734.1209 d: rla@rlaarchitect.com

**ANNIS, O'SULLIVAN, VOLLEBEKK**  
 Ontario Land Surveyors  
 14 CONCOURSE GATE, SUITE 400, NEPEAN, ONTARIO, K2E 7J6  
 TEL: (613) 727-0850 FAX: (613) 727-1079

DESIGNED BY: D.Y. DRAWN BY: J.T. APPROVED BY: D.Y.

PROJECT:

112 MONTREAL ROAD  
 RESIDENTIAL DEVELOPMENT

DRAWING TITLE:

EROSION AND SEDIMENTATION  
 CONTROL PLAN

PROJECT NO.: 19M-01935-00 DRAWING NO.: C05

*Andrew McCreight*

**ANDREW MCCREIGHT**  
 MANAGER, DEVELOPMENT REVIEW CENTRAL  
 PLANNING, DEVELOPMENT & BUILDING SERVICES  
 DEVELOPMENT DEPARTMENT, CITY OF OTTAWA

**APPROVED**  
 By mcreighan at 3:09 pm, Jun 19, 2026

FILENAME: Y:\19\114\19M-01935-00 - 112 Montreal Road - Site Plan3 Drawing\erosionandsedimentation\19M-01935-00\_C\_NREV.dwg  
 PLOTDATE: Feb 02, 2024 - 3:15pm, c:\p058941