

SCHEDULE OF EXISTING TREES

(Inventory conducted Jan 24, 2020)

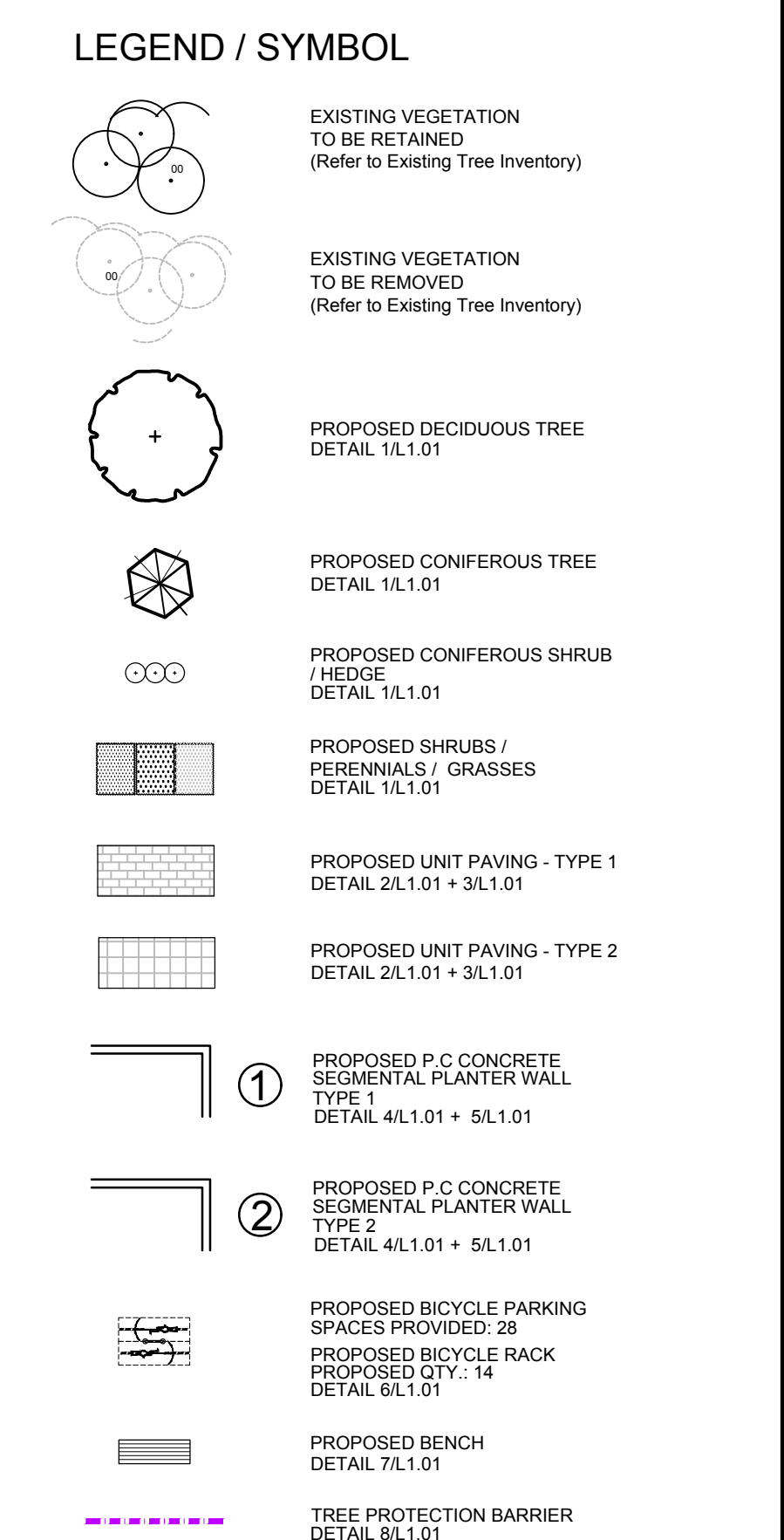
CODE	SPECIES	CONDITION	DBH ¹ (cm)	OWNERSHIP	ACTION NOTES
1	Manitoba Maple (<i>Acer negundo</i>)	Good	30	Private (Owner)	Development conflict / REMOVE
2	Ash (<i>Fraxinus</i>)	Dead	18	Private (Owner)	Hazardous - Development conflict / REMOVE
3	Manitoba Maple (<i>Acer negundo</i>)	Good	27	Private (Owner)	Development conflict / REMOVE
4	Honeylocust (<i>Gleditsia</i>)	Good	40	Private (Owner)	Development conflict / REMOVE
5	White Cedar (<i>Thuja occidentalis</i>)	Good	200cm ht	Private (Owner)	Development conflict / REMOVE
6	Honeylocust (<i>Gleditsia</i>)	Good	30	Private (Owner)	Development conflict / REMOVE
7	Austrian Pine (<i>Pinus nigra</i>)	Good	18	Neighboring	Protect / RETAIN
8	Honeylocust (<i>Gleditsia</i>)	Good-Fair	33	Neighboring	Protect / RETAIN
9	Honeylocust (<i>Gleditsia</i>)	Good-Fair	26	Neighboring	Protect / RETAIN
10	Austrian Pine (<i>Pinus nigra</i>)	Good-Fair	38	Neighboring	Protect / RETAIN
11	Siberian Elm (<i>Ulmus pumila</i>)	Good-Fair	52	Private (Owner)	Development conflict / REMOVE
12	Manitoba Maple (<i>Acer negundo</i>)	Good-Fair	30	Neighboring	Protect / RETAIN
13	Manitoba Maple (<i>Acer negundo</i>)	Good	28	Private (Owner)	Development conflict / REMOVE
14	Manitoba Maple (<i>Acer negundo</i>)	Good	30	Neighboring	Protect / RETAIN
15 group	Manitoba Maple (<i>Acer negundo</i>)	Good	10-30	Shared	RETAIN where not in conflict / REMOVE at access drive
	Norway Maple (<i>Acer platanoides</i>)	Good	10-20	Shared	RETAIN where not in conflict / REMOVE at access drive
	Buckthorn (<i>Rhamnus</i>)	Good	10-20	Shared	RETAIN where not in conflict / REMOVE at access drive
16	Ash (<i>Fraxinus</i>)	Dead	80	Shared	Hazardous / REMOVE
17 group	Austrian Pine (<i>Pinus nigra</i>)	Good	(5) 30	City	Protect / RETAIN
	predominately Norway Maple (<i>Acer platanoides</i>)	Good	Clump	City	RETAIN where not in conflict / REMOVE at access drive
	understory of Buckthorn (<i>Rhamnus</i>)	Good	shrub	City	RETAIN where not in conflict / REMOVE at access drive
18	few Hawthorn (<i>Crataegus</i>)	Poor	15	City	RETAIN where not in conflict / REMOVE at access drive
	and Amur Maple (<i>Acer ginnale</i>)	Fair	shrub	City	RETAIN where not in conflict / REMOVE at access drive
19 group	Colorado Spruce (<i>Picea pungens</i>)	Fair-Poor	10	City	Protect / RETAIN
20 group	Norway Maple (<i>Acer platanoides</i>)	Good	Clump	City	Protect / RETAIN
	White Elm (<i>Ulmus americana</i>)	Fair	10-15	City	Protect / RETAIN
	Honeysuckle (<i>Lonicera</i>)	Good	shrub	City	Protect / RETAIN
21 group	Colorado Spruce (<i>Picea pungens</i>)	Fair	(9) 25	City	Protect / RETAIN
22 group	Manitoba Maple (<i>Acer negundo</i>)	Good	15-35	City	RETAIN where not in conflict / REMOVE at proposed entrance pedestrian walkway
	Norway Maple (<i>Acer platanoides</i>)	Good	15-35	City	RETAIN where not in conflict / REMOVE at proposed entrance pedestrian walkway
	understory of Buckthorn (<i>Rhamnus</i>)	Good	shrub	City	RETAIN where not in conflict / REMOVE at proposed entrance pedestrian walkway
	Honeysuckle (<i>Lonicera</i>)	Good	shrub	City	RETAIN where not in conflict / REMOVE at proposed entrance pedestrian walkway
	Snowberry (<i>Symphoricarpos</i>)	Good	shrub	City	RETAIN where not in conflict / REMOVE at proposed entrance pedestrian walkway
	Serviceberry (<i>Amelanchier</i>)	Good	shrub	City	RETAIN where not in conflict / REMOVE at proposed entrance pedestrian walkway
	Amur Maple (<i>Acer ginnale</i>)	Good	shrub	City	RETAIN where not in conflict / REMOVE at proposed entrance pedestrian walkway

- 1 DBH Diameter at breast height, or 1.4m from grade (unless otherwise noted).
- NOTE:
- No tree species at risk, as identified under the Province of Ontario Endangered Species Act (ESA), were found on subject property or within 25m of adjacent properties.
 - In accordance to the guidelines outlined in the City of Ottawa Protocol for Wildlife Protection During Construction, no clearing of vegetation shall occur between April 15 and August 15, unless a qualified biologist has determined that no bird nesting is occurring within 5 days prior to clearing. A pre-clearing survey for active stick nests and cavity nests shall also be conducted between April 1 and April 15 in order to identify and protect early nesting owls and martlets.
 - A permit is required for any removal of trees, 10cm DBH or greater, on site.

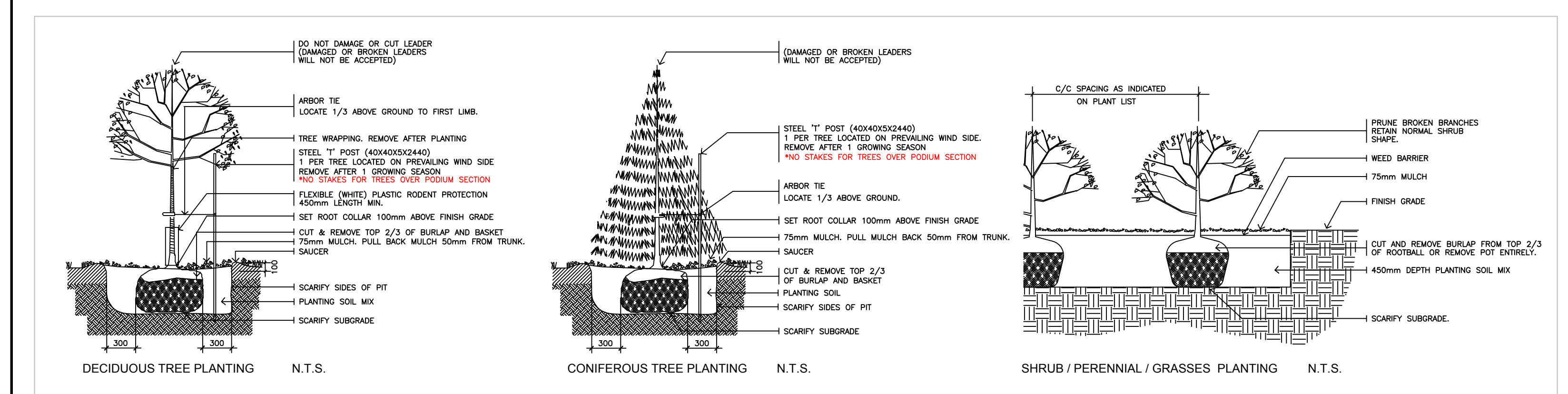
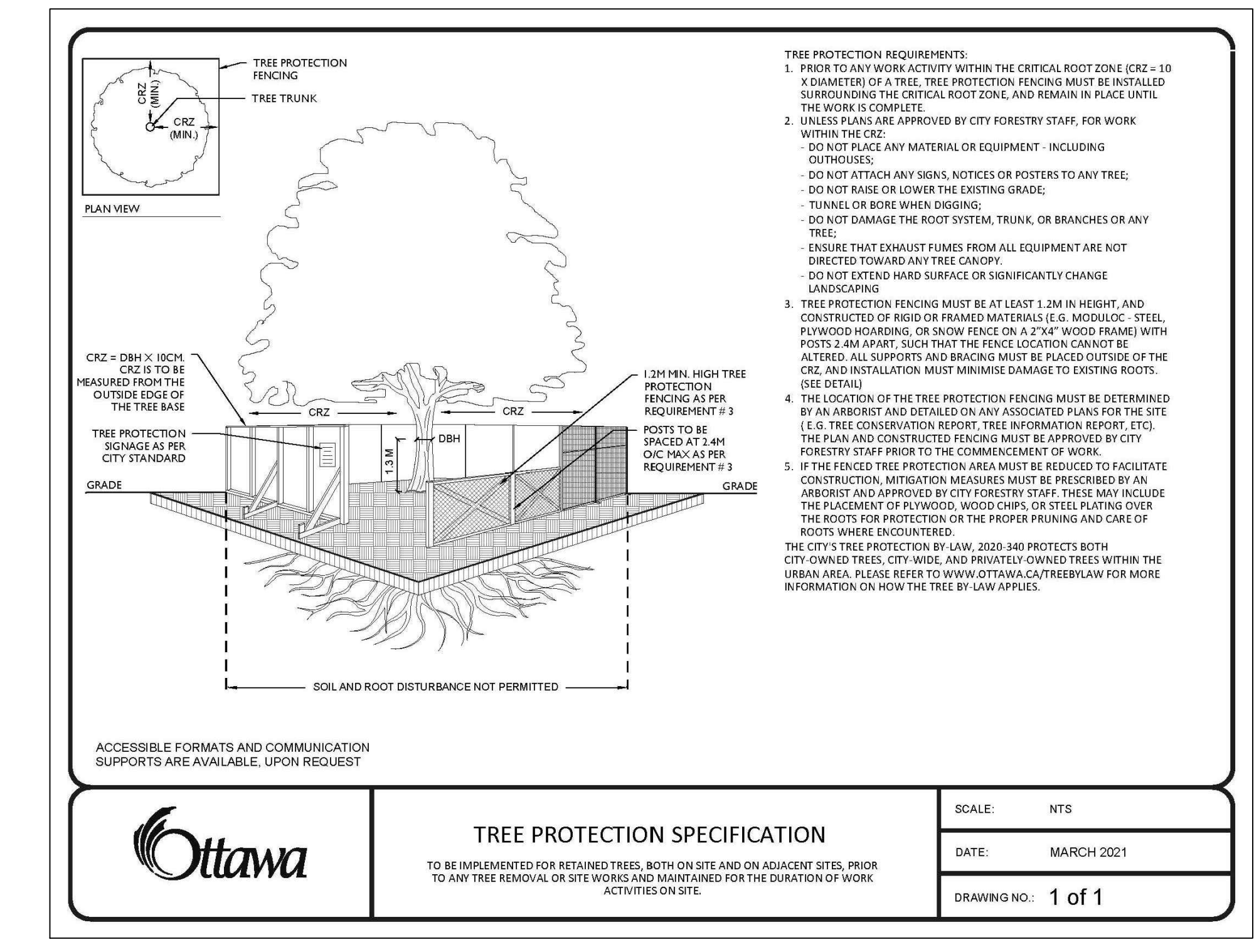
PLANT MATERIAL SCHEDULE

CODE	BOTANICAL NAME	COMMON NAME	QTY.	SIZE	REMARKS
DECIDUOUS TREES					
AC	JAMELANCHIER CANADENSIS	SHADY OIV SERVICEBERRY	6	50mm cal	1848 Single Stem
AFJ	ACER x FREEMANI JEFFERSONI	AUTUMN BLAZE MAPLE	4	50mm cal	1848 Single Stem
CO	OLEA FRAXINIFERA	COMMON HAZELBERRY	1	50mm cal	1848 Single Stem
GM	QUERCUS MACROCARPA	BUR OAK	1	50mm cal	1848 Single Stem
QR	QUERCUS RUBRA	RED OAK	6	50mm cal	1848 Single Stem
SR	SYRINGA KE TULATA IVORY SILK	IVORY SILK JAPANESE TREE LILAC	1	50mm cal	1848 Single Stem
CONIFEROUS TREES					
TO	THUJA OCCIDENTALIS	EASTERN WHITE CEDAR	34	125mm cal	1848
DECIDUOUS SHRUBS					
CS	CORNUS SERICEA	RED OSIER DOGWOOD	9	50mm cal	potbed, 100cm o/c
HA	HYDRANGEA ARBORESCENS ANNABELLE	ANNABELLE HYDRANGEA	20	50mm cal	potbed, 100cm o/c
MP	MYRTUS PARVIFLORICA	BAY TREE	9	50mm cal	potbed, 100cm o/c
PA	PHYSCALPUS OPLIBOLUS	COMMON NINEBARK	9	50mm cal	potbed, 100cm o/c
MA	MAEVA ALBA	FLOWERING CURRANT	9	50mm cal	potbed, 100cm o/c
RO	ROSA BLANDA	SHRUB ROSE	14	50mm cal	potbed, 100cm o/c
SA	SYMPHORICARPUS ALBUS	SNOWBERRY	65	50mm cal	potbed, 100cm o/c
VO	VIBURNUM OBTUSATUM	ARROWWOOD	9	50mm cal	potbed, 100cm o/c
CONIFEROUS SHRUBS					
JCO	JUNIPERUS CHINENSIS ONTARIO GREEN	ONTARIO GREEN JUNIPER	86	125mm cal	potbed, 100cm o/c
PERENNIALS					
CO	COREOPSIS lanceolata	GOREOPSIS	40	15 cm pot	plant 50cm o/c
EP	ESCHSCHOLIA affinis	PALE PURPLE CONEFLOWER	40	15 cm pot	plant 50cm o/c
RU	RUBISCOCHA leucina	CUTLEAF CONEFLOWER	31	15 cm pot	plant 50cm o/c
SA	SALICIA siliquosa May Night	MAY NIGHT SAGE	104	15 cm pot	plant 50cm o/c
ORNAMENTAL GRASSES					
Ca	CALAMAGOSTIS x acutiflora Karl Foerster	KARL FOERSTER REED GRASS	67	15cm pot	plant 75cm o/c
Pv	PANICUM virgatum	SWITCH GRASS	29	15cm pot	plant 75cm o/c
Sp	SPODOPODIUM heterolepis	FRANKE DRIPSLEED	47	15cm pot	plant 75cm o/c

SCALE 1:300

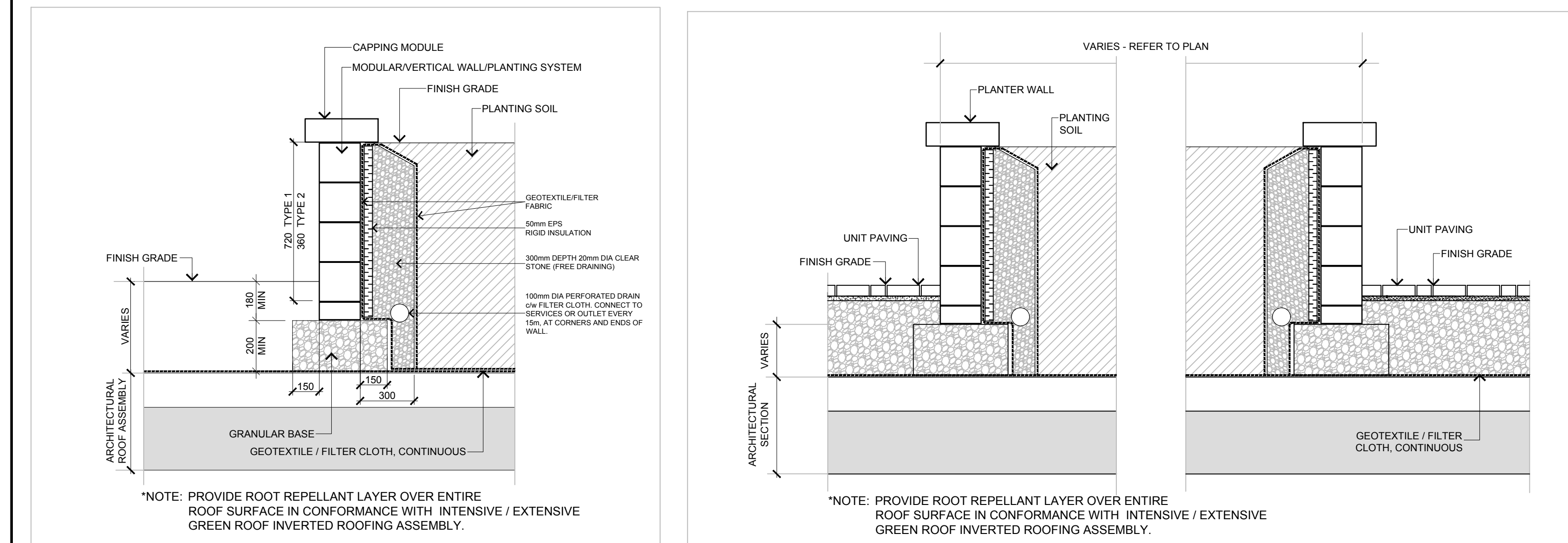


- ### GENERAL NOTES
- This drawing shall be read in conjunction with all relevant Architectural, Engineering and related Drawings and Documents.
 - Refer to Engineering Drawings for Grading and Servicing.
 - Refer to Architectural Drawings for Site layout.
 - Contractor shall provide the location of all services/utilities by consulting Municipal Authorities and utility companies and shall be responsible for adequate protection from damage during construction.
 - Plant material shall be No. 1 Grade and shall comply with the Metro Guide Specifications For Nursery Stock (latest edition), published by the Canadian Nursery Trades Association.
 - Plant Material locations are Schematic / Approximate only. Contractor shall stake out locations on site prior to work.
 - Contractor shall guarantee all plant material for a period of one (1) full year from the date of final acceptance.
 - Perennials and Ornamental Grasses shall be planted in a continuous prepared bed of 450mm depth planting soil mix covered with 75mm depth composted pine mulch to finish grade. (NO WEED CONTROL FABRIC), as specified.
 - Soil grades to receive 125mm topsoil. Sod shall be No. 1 quality conforming to the Canadian Nursery Sod Growers Specification.
 - Reinstatement all areas damaged or disturbed beyond the limit of Work.
 - Plant Material substitutions shall not be permitted without approval from the Consultant.
 - Provide protection for existing trees to be retained. Install fencing to Critical Root Zone (CRZ) of each tree or group of trees (if close together). No excavation, filling, storage of materials, disposal of chemicals or waste, vehicle traffic or other activity which could cause root zone disturbance or compaction, shall take place within the protected area.
 - Where limbs of trees are removed to accommodate construction work, they shall be done in accordance with accepted arboricultural practices.
 - Where root systems become exposed due to excavation, carefully trim damaged roots and provide temporary mulch until backfill is undertaken. Keep roots moist at all times.
 - Construct wells or retaining walls if grades around trees are to be modified. Root feed all existing trees after construction.
 - Contractor shall advise Consultant a minimum of 48hrs. prior to proceeding landscape work and any required Field Reviews.
 - THIS PLAN HAS BEEN PREPARED FOR MUNICIPAL APPROVAL ONLY AND MAY NOT BE USED FOR ANY OTHER PURPOSE.



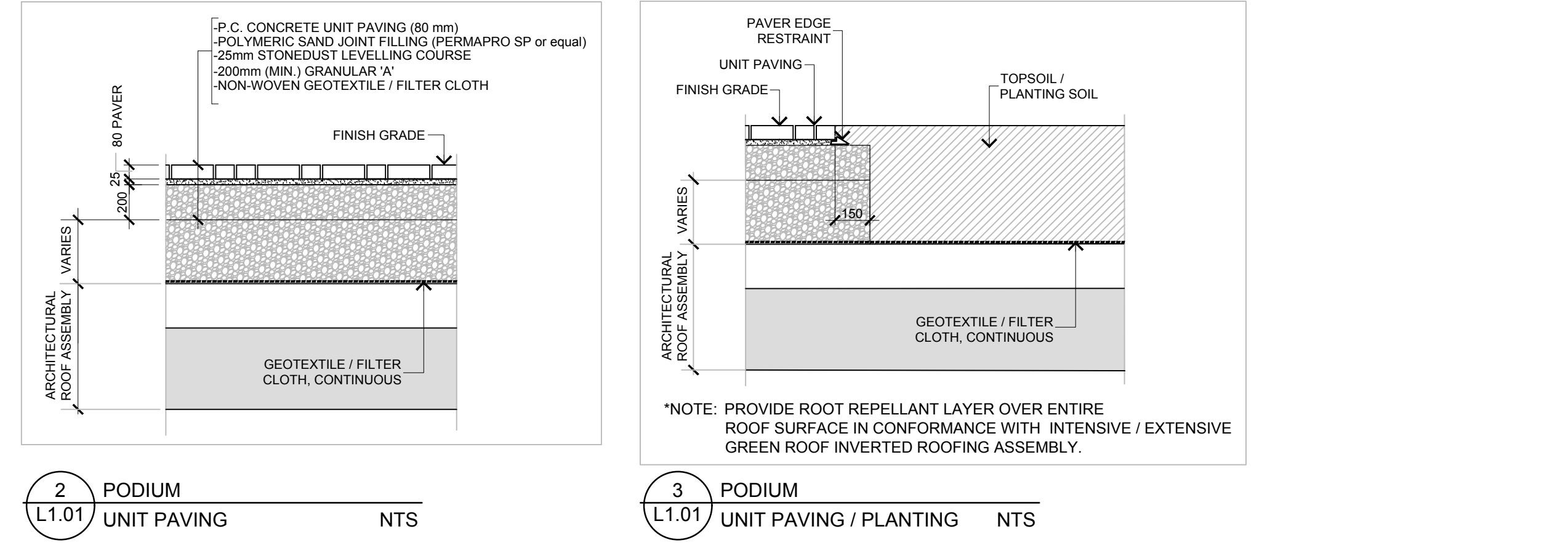
*ROOT BARRIER SHALL BE INSTALLED IN CONFORMANCE WITH INTENSIVE GREEN ROOF INVERTED ROOFING ASSEMBLY

1 PLANTING DETAILS (TYPICAL) NTS



4 PODIUM P.C. CONCRETE PLANTER WALL NTS

5 PODIUM UNIT PAVING / PLANTER SECTION NTS



2 PODIUM UNIT PAVING NTS

3 PODIUM UNIT PAVING / PLANTING NTS

500 SERIES

MBR-0500-0003

INSTALLATION: SURFACE MOUNT
FINISH: GLOSS BLACK POWDERCOAT

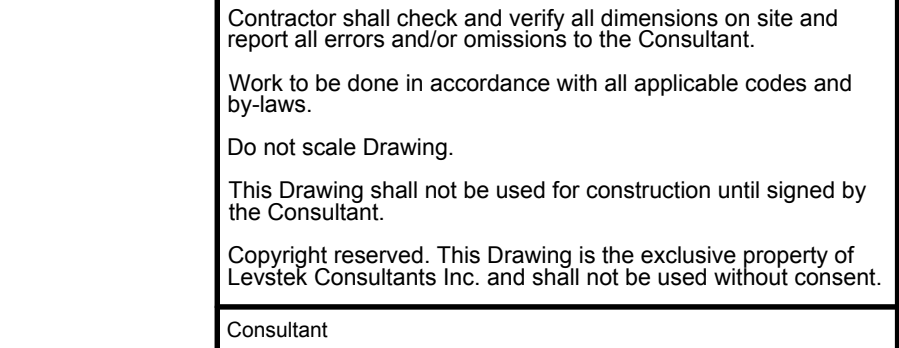
800 SERIES

MBE-0870-0025

POWDERCOAT COLOR: TITANIUM (GLOSS)

FOR APPROVAL ONLY

NO.	DATE	REVISION
10	NOV. 29/23	RE-ISSUE FOR SITE PLAN APPROVAL 14
9	OCT. 17/23	RE-ISSUE FOR SITE PLAN APPROVAL 13
8	JUNE 29/23	RE-ISSUE FOR SITE PLAN APPROVAL 12
7	MAR. 27/23	RE-ISSUE FOR SITE PLAN APPROVAL
6	JAN. 18/23	ISSUE FOR LORP
5	SEPT. 13/22	ISSUE FOR SITE PLAN APPROVAL, PH. 1
4	DEC. 21/21	PER SITE CHANGES
3	OCT. 13/21	RE-ISSUE PER CITY COMMENTS (1)
2	MAY. 11/21	ISSUE FOR ZBLA
1	APR. 28/21	ISSUE FOR COORDINATION / REVIEW



Consent

Client: 2705460 Ontario Inc.

Project: 112 MONTREAL ROAD PHASE 1 OTTAWA ONTARIO

Drawing Title: LANDSCAPE / TCR PLAN

Scale: 1:300

Project No: 1188

Drawing No: L1.01

APPROVED

By **Andrew McCreight** at 3:09 pm, Jun 19, 2026

MANAGER, DEVELOPMENT REVIEW CENTRAL
PLANNING, DEVELOPMENT & BUILDING SERVICES
DEVELOPMENT DEPARTMENT, CITY OF OTTAWA

D07-12-22-0138