

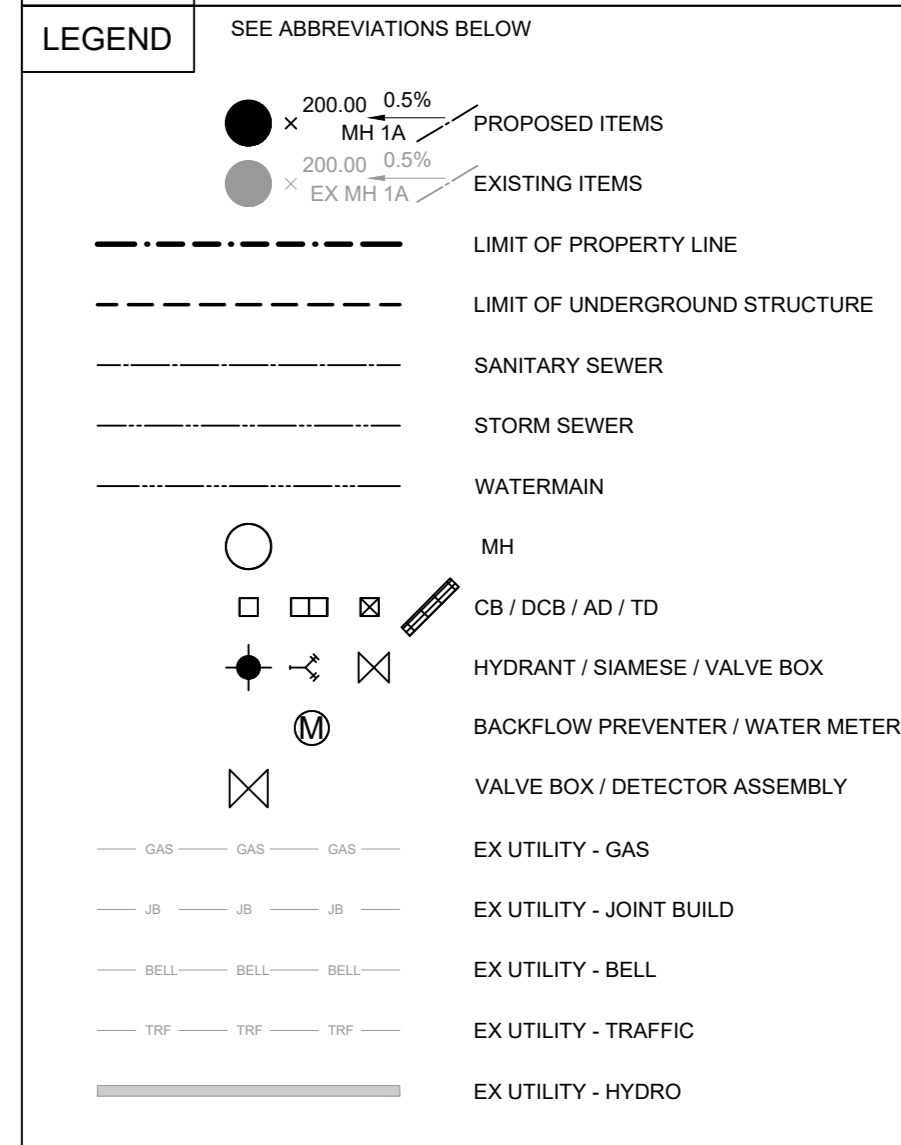
**CONSULTANTS**

- TMG  
8800 Dufferin St., Suite 200, Vaughan, ON L4K 0C5
- RJC Engineers  
1545 Carlin Ave., Suite 304, Ottawa, ON K1Z 8P9
- Smith+Anderson  
1600 Carling Ave., Suite 530, Ottawa, ON K1Z 1G3
- PFS Studio  
1777 W 3rd Ave., Vancouver, BC V6J 1KJ
- Two Row Architect  
1804 6th Line, Chatham, ON N0A 1M0
- Westview Projects  
18 Louisa St., Ottawa, ON K1R 6Y6

**STAMP**



**KEY PLAN**



BENCHMARK: ELEVATIONS ARE GEODETIC, IN METRES, AND DERIVED FROM THE CANMET VRS NETWORK MONUMENT OTTAWA ELEVATION=95.230

BEARING: BEARINGS ARE GRID, DERIVED FROM THE CAN NET VRS NETWORK OBSERVATIONS ON NCD HORZ CONTROL MONUMENTS 19773035 & 19801011, CENTRAL MERIDIAN: 76°30' W LONGITUDE: 45°M ZONE 9

**DRAWING NOTES**

- THIS DRAWING IS THE EXCLUSIVE PROPERTY OF THE MUNICIPAL INFRASTRUCTURE GROUP LTD (TMG). THE REPRODUCTION OF ANY PART WITHOUT PRIOR WRITTEN CONSENT FROM TMG IS STRICTLY PROHIBITED.
- THIS DRAWING IS TO BE READ AND UNDERSTOOD IN CONJUNCTION WITH ALL OTHER DRAWINGS AND DOCUMENTS APPLICABLE TO THIS PROJECT.
- THIS DRAWING IS NOT TO BE ISSUED FOR CONSTRUCTION UNTIL ALL REQUIRED PERMITS HAVE BEEN ISSUED.
- THE CONTRACTOR SHALL VERIFY ALL DIMENSIONS, ELEVATIONS, INVERTS AND DATA ON SITE AND REPORT ANY DISCREPANCIES OR OMISSIONS TO TMG 48 HOURS PRIOR TO ANY CONSTRUCTION.

**ABBREVIATIONS**

TW	= TOP OF WALL	HDPE	= HIGH DENSITY POLYETHYLENE
BW	= BOTTOM OF WALL	CONC	= CONCRETE
GENERAL:		MH	= MANHOLE
PROP	= PROPOSED	STM	= STORM
EX	= EXISTING	SAN	= SANITARY
ELEVATIONS:		WAT	= WATER
TC	= TOP OF CURB	PVC	= POLYVINYL CHLORIDE
BC	= BOTTOM OF CURB	AD	= AREA DRAIN
		TD	= TRENCH DRAIN

SCALE: 1:300  
DATE: APRIL 2022  
DRAWN BY: B.G.  
DESIGNED BY: B.G.  
CHECKED BY: B.D.

**PROJECT**

**LEBRETON LIBRARY PARCEL**  
665 Albert St  
Ottawa, ON  
Canada



**DREAM**

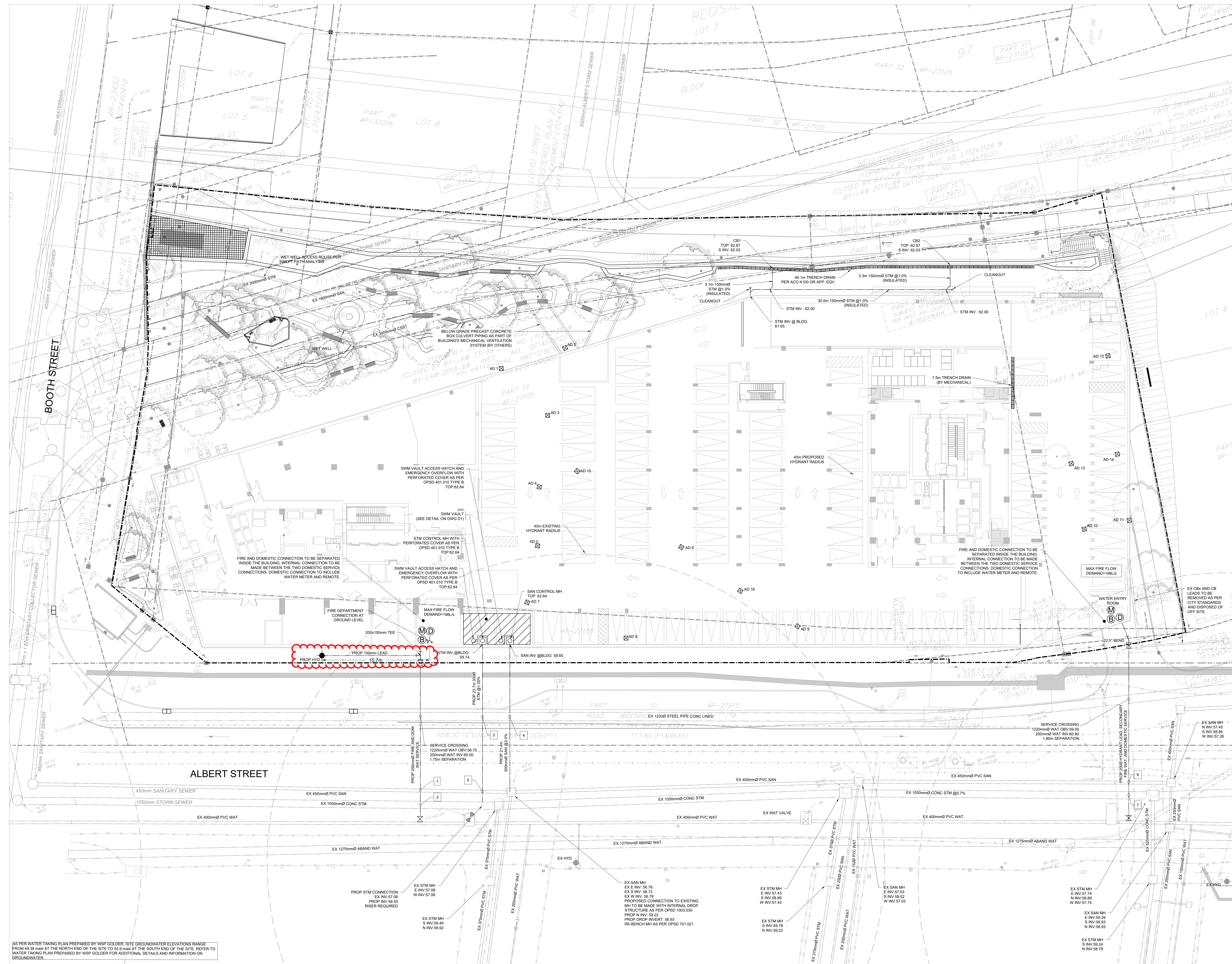
30 Adelaide St. E., Suite 301,  
Toronto, ON M5C 3H1

**KEYPLAN**



**ISSUE CHART**

NO.	REVISION	DATE
1	ISSUED FOR PERMITS DESIGN	202203
2	ISSUED FOR PERMITS DESIGN	202203
3	ISSUED FOR PERMITS DESIGN	202203
4	ISSUED FOR PERMITS DESIGN	202203
5	ISSUED FOR PERMITS DESIGN	202203
6	ISSUED FOR PERMITS DESIGN	202203
7	ISSUED FOR PERMITS DESIGN	202203
8	ISSUED FOR PERMITS DESIGN	202203
9	ISSUED FOR PERMITS DESIGN	202203
10	ISSUED FOR PERMITS DESIGN	202203
11	ISSUED FOR PERMITS DESIGN	202203
12	ISSUED FOR PERMITS DESIGN	202203
13	ISSUED FOR PERMITS DESIGN	202203
14	ISSUED FOR PERMITS DESIGN	202203
15	ISSUED FOR PERMITS DESIGN	202203
16	ISSUED FOR PERMITS DESIGN	202203
17	ISSUED FOR PERMITS DESIGN	202203
18	ISSUED FOR PERMITS DESIGN	202203
19	ISSUED FOR PERMITS DESIGN	202203
20	ISSUED FOR PERMITS DESIGN	202203
21	ISSUED FOR PERMITS DESIGN	202203
22	ISSUED FOR PERMITS DESIGN	202203
23	ISSUED FOR PERMITS DESIGN	202203
24	ISSUED FOR PERMITS DESIGN	202203
25	ISSUED FOR PERMITS DESIGN	202203
26	ISSUED FOR PERMITS DESIGN	202203
27	ISSUED FOR PERMITS DESIGN	202203
28	ISSUED FOR PERMITS DESIGN	202203
29	ISSUED FOR PERMITS DESIGN	202203
30	ISSUED FOR PERMITS DESIGN	202203



AS PER WATER TAKING PLAN PREPARED BY WSP GOLDER, SITE GROUNDWATER ELEVATIONS RANGE FROM 42.30m AT THE NORTH END OF THE SITE TO 63.10m AT THE SOUTH END OF THE SITE. REFER TO WATER TAKING PLAN PREPARED BY WSP GOLDER FOR ADDITIONAL DETAILS AND INFORMATION ON GROUNDWATER.

**WESTERN WATER SERVICE CONNECTION TABLE**

DESCRIPTION	GROUND ELEVATION	TOP OF WATERMAIN
CONNECTION TO EXISTING	62.45	59.94
VALVE & VALVE BOX AT PROPERTY LINE	62.56	60.76
CONNECTION TO BUILDING	62.61	60.81

**WATERMAIN / SEWER CROSSING TABLE**

LOCATION	STORM SEWER		SANITARY SEWER		WATERMAIN		CLEARANCES
	Invert Elev	Di. (mm)	Invert Elev	Di. (mm)	Invert Elev	Obvert Elev	
1			56.68	450	57.13	59.62	2490mm (SAN Below)
2	57.00	1050	58.05		59.62	150	1570mm (STM Below)
3	59.84	300	59.94		57.45	1220	58.67 970mm (WM Below)
4			59.44	300	59.74	1220	58.69 750mm (WM Below)
5	59.53	300	59.83	56.73	450	57.18	2350mm (SAN Below)
6			57.23	450	57.66	60.18	150 60.33 2500mm (SAN Below)
7	57.72	1050	56.77		60.18	150	60.33 1410mm (STM Below)

*Andrew McCreight*

**ANDREW MCCREIGHT**  
MANAGER, DEVELOPMENT REVIEW CENTRAL  
PLANNING, DEVELOPMENT & BUILDING SERVICES  
DEVELOPMENT DEPARTMENT, CITY OF OTTAWA

**APPROVED**  
By Andrew McCreight at 2:30 pm, Jun 30, 2025