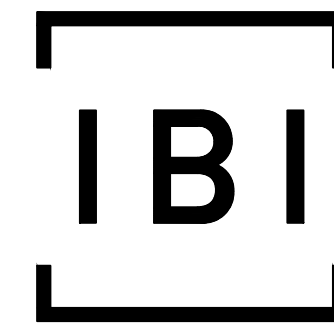
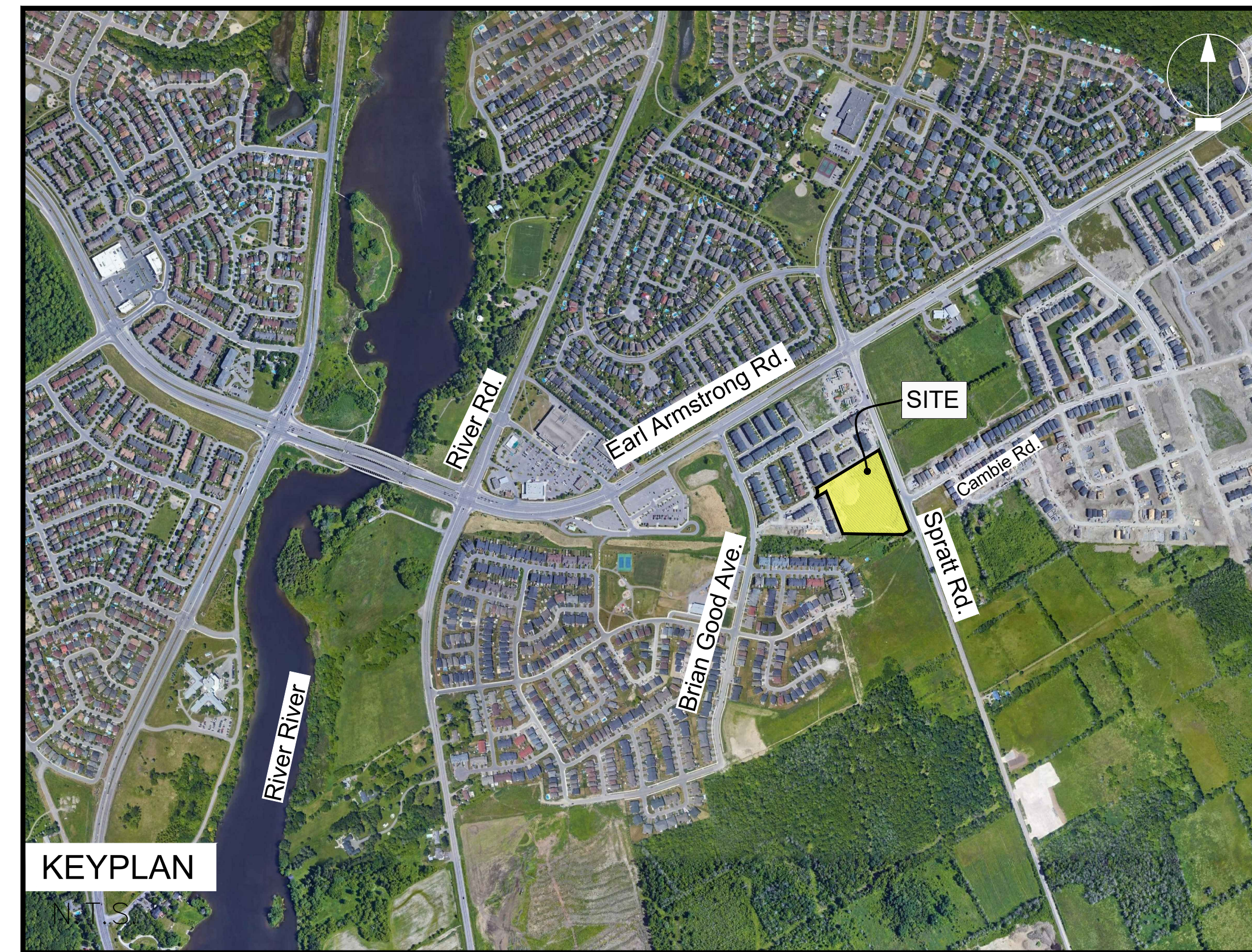




CLARIDGE
H O M E S



IBI GROUP
400 – 333 Preston Street
Ottawa ON K1S 5N4 Canada
tel 613 225 1311 fax 613 225 9868
ibigroup.com



Sheet List Table	
Sheet Number	Sheet Title
--	000 COVER
C-001	GENERAL PLAN OF SERVICES
C-010	GENERAL NOTES, LEGEND AND CB DATA TABLE
C-200	GRADING PLAN
C-400	SANITARY DRAINAGE AREA PLAN
C-500	STORM DRAINAGE AREA PLAN
C-600	PONDING PLAN
C-900	EROSION AND SEDIMENT CONTROL PLAN

CLARIDGE HOMES
ZENS - 4624 SPRATT
CITY OF OTTAWA
CONTRACT NO. 135856

135856 - SAN STRUCTURE TABLE					
NAME	RIM ELEV.	INVERT IN	INVERT IN AS-BUILT	INVERT OUT	DESCRIPTION
MH100A	91.42	N88.676		SW88.816	1200mmØ OPSD-701.010
MH101A	91.47	N88.708 NW88.748		SW88.688	1200mmØ OPSD-701.010
MH102A	91.42	SE88.644 N88.644		SW88.624	1200mmØ OPSD-701.010
MH103A	91.51	N88.500 NW88.540		SW88.480	1200mmØ OPSD-701.010
MH104A	91.53	N88.303 SE88.433		SW88.373	1200mmØ OPSD-701.010
MH105A	91.58	N88.278		NW88.218	1200mmØ OPSD-701.010
MH106A	91.54	SE88.100		SW88.040	1200mmØ OPSD-701.010
MH110A	91.62	S89.037		W88.977	1200mmØ OPSD-701.010
MH111A	91.49	E88.863 S88.903		W88.843	1200mmØ OPSD-701.010
MH112A	91.57	E88.799		W88.769	1200mmØ OPSD-701.010
MH113A	91.62	E88.735		N88.705	1200mmØ OPSD-701.010
MH114A	91.56	S88.662 W88.702		N88.642	1200mmØ OPSD-701.010
MH115A	91.55	S88.482		NW88.462	1200mmØ OPSD-701.010
MH120A	91.71	S89.097		N89.077	1200mmØ OPSD-701.010
MH121A	91.82			N89.164	1200mmØ OPSD-701.010
MH123A	91.84			N89.016	1200mmØ OPSD-701.010
MH130A	91.58			W89.165	1200mmØ OPSD-701.010
MH131A	91.59	E89.049		N88.989	1200mmØ OPSD-701.010
MH132A	91.35	S88.848 E88.888		N88.828	1200mmØ OPSD-701.010
MH133A	91.46	S88.733		NW88.713	1200mmØ OPSD-701.010
MH140A	91.67			W89.004	1200mmØ OPSD-701.010
MH150A	91.64	S88.894 N88.894		E88.834	1200mmØ OPSD-701.010
MH151A	91.56			N89.004	1200mmØ OPSD-701.010
MH152A	91.68			S89.017	1200mmØ OPSD-701.010
MH170A	91.51			SE88.871	1200mmØ OPSD-701.010
MH180A	91.47			SE88.658	1200mmØ OPSD-701.010
MH190A	91.69			SE88.986	1200mmØ OPSD-701.010

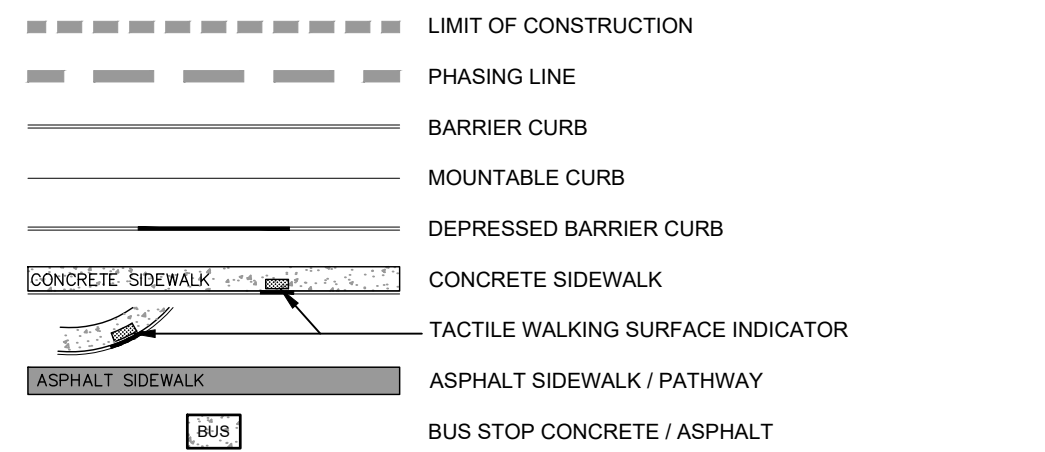
MANHOLE FRAME AND COVERS PER CITY STD S25 AND S24

135856 - STM STRUCTURE TABLE					
NAME	RIM ELEV.	INVERT IN	INVERT IN AS-BUILT	INVERT OUT	DESCRIPTION
CB1	91.30			NW89.900	OPSD-705.010
CB3	91.25			W89.850	OPSD-705.010
CB17	92.89			NE90.000	OPSD-705.010
CBMH9	91.35			E87.563	1200mmØ OPSD-701.010
CBMH14	92.66	NE86.931 SE89.837		NW86.901	1200mmØ OPSD-701.010
CBMH133	91.52			N87.755	1200mmØ OPSD-701.010
CBMH134	91.44	S87.692		W87.132	1200mmØ OPSD-701.010
MH100	91.32			SW87.502	1200mmØ OPSD-701.010
MH101	91.41	NE87.348 SE87.313		SW87.103	1200mmØ OPSD-701.010
MH102	91.52	NE86.999 SE87.039		SW86.754	1500mmØ OPSD-701.011
MH103	91.61	NE86.728		NW86.668	1800mmØ OPSD-701.012
MH104	91.51	SE86.634 NE86.594		SW86.574	1800mmØ OPSD-701.012
MH109	91.69	E87.660 SW89.970		NW87.600	1200mmØ OPSD-701.010
MH110	91.61	SE87.587		W87.452	1200mmØ OPSD-701.010
MH111	91.52	E87.356 SE89.780		W87.326	1200mmØ OPSD-701.010
MH112	91.64	E87.306		N87.276	1200mmØ OPSD-701.010
MH113	91.58	S87.239 W87.429		N87.144	1200mmØ OPSD-701.010
MH114	91.57	S87.090 E87.120		NW87.060	1200mmØ OPSD-701.010
MH124	91.74	E89.706		SW89.150	1200mmØ OPSD-701.010
MH125	91.78	NE89.041		SW86.943	1200mmØ OPSD-701.010
MH127	91.51			N87.959	1200mmØ OPSD-701.010
MH128	91.52	S87.889		W87.529	1200mmØ OPSD-701.010
MH129	91.46	S87.481 E87.521		N87.461	1200mmØ OPSD-701.010
MH130	91.48			W87.844	1200mmØ OPSD-701.010
MH131	91.61	E87.759		N87.699	1200mmØ OPSD-701.010
MH132	91.45	S87.429		NW87.324	1200mmØ OPSD-701.010

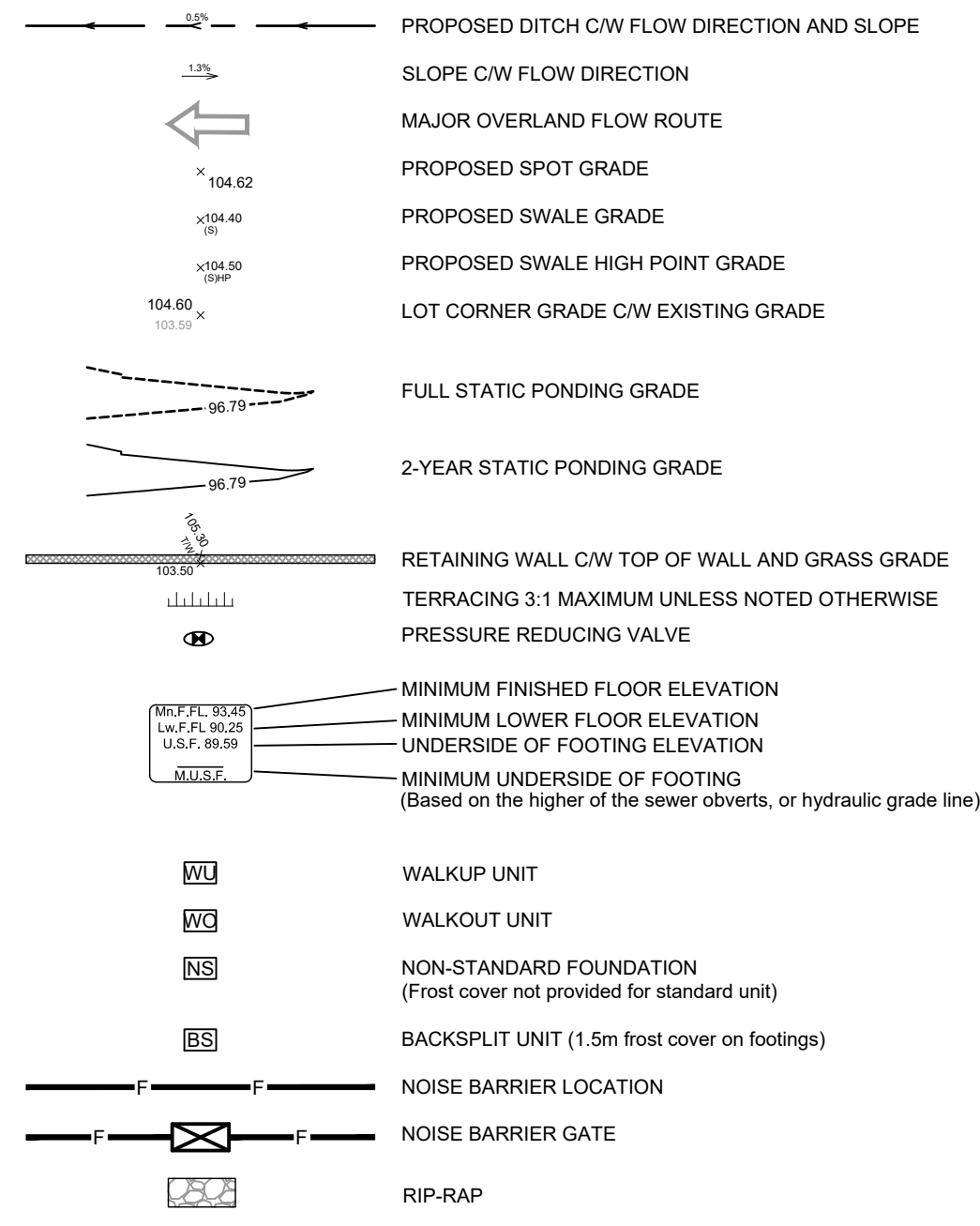
MANHOLE FRAME AND COVERS PER CITY STD S25 AND S24.1

Station	Description	Finished Grade	Top of Manhole	As Built
A-0+00.00	TEE	91.4	88.877	88.877
C-0+00.00	TEE	91.433	88.877	88.877
C-0+01.20	V-BEND	91.475	88.875	88.875
C-0+02.40	45° BEND	91.542	88.872	88.872
C-0+03.60	V-BEND	91.609	88.869	88.869
C-0+04.80	45° BEND	91.676	88.866	88.866
C-0+06.00	V-BEND	91.743	88.863	88.863
C-0+07.20	45° BEND	91.810	88.860	88.860
C-0+08.40	V-BEND	91.877	88.857	88.857
C-0+09.60	45° BEND	91.944	88.854	88.854
C-0+10.80	V-BEND	92.011	88.851	88.851
C-0+12.00	45° BEND	92.078	88.848	88.848
C-0+13.20	V-BEND	92.145	88.845	88.845
C-0+14.40	45° BEND	92.212	88.842	88.842
C-0+15.60	V-BEND	92.279	88.839	88.839
C-0+16.80	45° BEND	92.346	88.836	88.836
C-0+18.00	V-BEND	92.413	88.833	88.833
C-0+19.20	45° BEND	92.480	88.830	88.830
C-0+20.40	V-BEND	92.547	88.827	88.827
C-0+21.60	45° BEND	92.614	88.824	88.824
C-0+22.80	V-BEND	92.681	88.821	88.821
C-0+24.00	45° BEND	92.748	88.818	88.818
C-0+25.20	V-BEND	92.815	88.815	88.815
C-0+26.40	45° BEND	92.882	88.812	88.812
C-0+27.60	V-BEND	92.949	88.809	88.809
C-0+28.80	45° BEND	93.016	88.806	88.806
C-0+30.00	V-BEND	93.083	88.803	88.803
C-0+31.20	45° BEND	93.150	88.800	88.800
C-0+32.40	V-BEND	93.217	88.797	88.797
C-0+33.60	45° BEND	93.284	88.794	88.794
C-0+34.80	V-BEND	93.351	88.791	88.791
C-0+36.00	45° BEND	93.418	88.788	88.788
C-0+37.20	V-BEND	93.485	88.785	88.785
C-0+38.40	45° BEND	93.552	88.782	88.782
C-0+39.60	V-BEND	93.619	88.779	88.779
C-0+40.80	45° BEND	93.686	88.776	88.776
C-0+42.00	V-BEND	93.753	88.773	88.773
C-0+43.20	45° BEND	93.820	88.770	88.770
C-0+44.40	V-BEND	93.887	88.767	88.767
C-0+45.60	45° BEND	93.954	88.764	88.764
C-0+46.80	V-BEND	94.021	88.761	88.761
C-0+48.00	45° BEND	94.088	88.758	88.758
C-0+49.20	V-BEND	94.155	88.755	88.755
C-0+50.40	45° BEND	94.222	88.752	88.752
C-0+51.60	V-BEND	94.289	88.749	88.749
C-0+52.80	45° BEND	94.356	88.746	88.746
C-0+54.00	V-BEND	94.423	88.743	88.743
C-0+55.20	45° BEND	94.490	88.740	88.740
C-0+56.40	V-BEND	94.557	88.737	88.737
C-0+57.60	45° BEND	94.624	88.734	88.734
C-0+58.80	V-BEND	94.691	88.731	88.731
C-0+60.00	45° BEND	94.758	88.728	88.728
C-0+61.20	V-BEND	94.825	88.725	88.725
C-0+62.40	45° BEND	94.892	88.722	88.722
C-0+63.60	V-BEND	94.959	88.719	88.719
C-0+64.80	45° BEND	95.026	88.716	88.716
C-0+66.00	V-BEND	95.093	88.713	88.713
C-0+67.20	45° BEND	95.160	88.710	88.710
C-0+68.40	V-BEND	95.227	88.707	88.707
C-0+69.60	45° BEND	95.294	88.704	88.704
C-0+70.80	V-BEND	95.361	88.701	88.701
C-0+72.00	45° BEND	95.428	88.698	88.698
C-0+73.20	V-BEND	95.495	88.695	88.695
C-0+74.40	45° BEND	95.562	88.692	88.692
C-0+75.60	V-BEND	95.629	88.689	88.689
C-0+76.80	45° BEND	95.696	88.686	88.686
C-0+78.00	V-BEND	95.763	88.683	88.683
C-0+79.20	45° BEND	95.830	88.680	88.680
C-0+80.40	V-BEND	95.897	88.677	88.677
C-0+81.60	45° BEND	95.964	88.674	88.674
C-0+82.80	V-BEND	96.031	88.671	88.671
C-0+84.00	45° BEND	96.098	88.668	88.668
C-0+85.20	V-BEND	96.165	88.665	88.665
C-0+86.40	45° BEND	96.232	88.662	88.662
C-0+87.60	V-BEND	96.299	88.659	88.659
C-0+88.80	45° BEND	96.366	88.656	88.656
C-0+90.00	V-BEND	96.433	88.653	88.653
C-0+91.20	45° BEND	96.500	88.650	88.650
C-0+92.40	V-BEND	96.567	88.647	88.647
C-0+93.60	45° BEND	96.634	88.644	88.644
C-0+94.80	V-BEND	96.701	88.641	88.641
C-0+96.00	45° BEND	96.768	88.638	88.638
C-0+97.20	V-BEND	96.835	88.635	88.635
C-0+98.40	45° BEND	96.902	88.632	88.632
C-0+99.60	V-BEND	96.969	88.629	88.629
C-100.00	45° BEND	97.036	88.626	88.626
C-100.00	TEE	91.496	88.996	88.996
C-100.00	V-BEND	91.451	88.951	88.951
C-100.00	V-BEND	91.387	88.923	88.923
C-100.00	SAN	91.374	88.920	88.920
C-100.00	V-BEND	91.358	88.913	88.913
C-100.00	V-BEND	91.342	88.906	88.906
C-100.00	V-BEND	91.326	88.899	88.899
C-100.00	V-BEND	91.310	88.892	88.892
C-100.00	V-BEND	91.294	88.885	88.885
C-100.00	V-BEND	91.278	88.878	88.878
C-100.00	V-BEND	91.262	88.871	88.871
C-100.00	V-BEND	91.246	88.864	88.864
C-100.00	V-BEND	91.230	88.857	88.857
C-100.00	V-BEND	91.214	88.850	88.850
C-100.00	V-BEND	91.198	88.843	88.843
C-100.00	V-BEND	91.182	88.836	88.836
C-100.00	V-BEND	91.166	88.829	88.829
C-100.00	V-BEND	91.150	88.822	88.822
C-100.00	V-BEND	91.134	88.815	88.815
C-100.00	V-BEND	91.118	88.808	88.808
C-100.00	V-BEND	91.102	88.801	88.801
C-100.00	V-BEND	91.086	88.794	88.794
C-100.00	V-BEND	91.070	88.787	88.787
C-100.00	V-BEND	91.054	88.780	88.780
C-100.00	V-BEND	91.038	88.773	88.773
C-100.00	V-BEND	91.022	88.766	88.766
C-100.00	V-BEND	91.006	88.759	88.759
C-100.00	V-BEND	90.990	88.752	88.752
C-100.00	V-BEND	90.974	88.745	88.745
C-100.00	V-BEND	90.958	88.738	88.738
C-100.00	V-BEND	90.942	88.731	88.731
C-100.00	V-BEND	90.926	88.724	88.724
C-100.00	V-BEND	90.910	88.717	88.717
C-100.00	V-BEND	90.894	88.710	88.710
C-100.00	V-BEND	90.878	88.703	88.703
C-100.00	V-BEND	90.862	88.696	88.696
C-100.00	V-BEND	90.846	88.689	88.689
C-100.00	V-BEND	90.830	88.682	88.682
C-100.00	V-BEND	90.814	88.675	88.675
C-100.00	V-BEND	90.798	88.668	88.668
C-100.00	V-BEND	90.782	88.661	88.661
C-100.00	V-BEND	90.766	88.654	88.654
C-100.00	V-BEND	90.750	88.647	88.647
C-100.00	V-BEND	90.734	88.640	88.640
C-100.00	V-BEND	90.718	88.633	88.633
C-100.00	V-BEND	90.702	88.626	88.626
C-100.00	V-BEND	90.686	88.619	88.619
C-100.00	V-BEND	90.670	88.612	88.612
C-100.00	V-BEND	90.654	88.605	88.605
C-100.00	V-BEND	90.638	88.598	88.598
C-100.00	V-BEND	90.622	88.591	88.591
C-100.00	V-BEND	90.606	88.584	

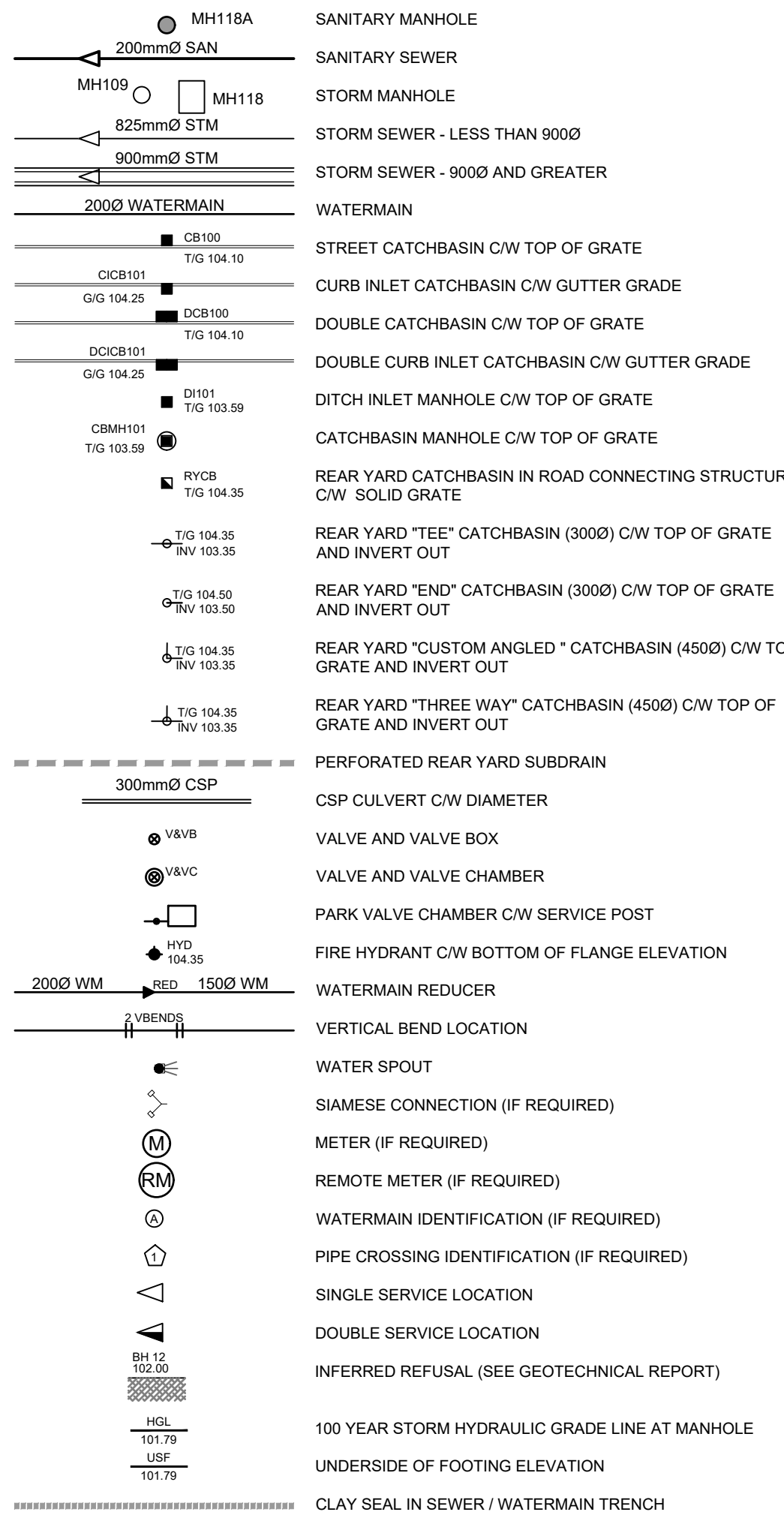
GENERAL LEGEND



GRADING LEGEND



SERVICING LEGEND



Crossing No.	PIPE 1	PIPE 2	Clearance
1	SAN Bottom 89 352	WM Top 88 842	0.519
2	SAN Bottom 89 352	WM Top 88 856	0.502
3	STM Bottom 89 273	WM Top 88 748	0.525
4	SAN Bottom 89 254	WM Top 88 748	0.506
5	SAN Bottom 89 190	WM Top 88 682	0.508
6	WM Bottom 88 870	STM Top 87 666	1.210
7	WM Bottom 88 879	STM Top 87 522	1.257
8	WM Bottom 88 501	STM Top 88 610	0.292
9	WM Bottom 89 076	STM Top 88 818	0.258
10	WM Bottom 89 076	STM Top 87 708	1.368
11	WM Bottom 89 254	STM Top 88 724	0.531
12	SAN Bottom 88 134	WM Top 88 663	0.532
13	SAN Bottom 89 280	WM Top 88 775	0.505
14	SAN Bottom 89 280	WM Top 88 776	0.504
15	WM Bottom 88 872	STM Top 88 609	0.263
16	WM Bottom 88 723	STM Top 87 913	0.810
17	WM Bottom 89 390	STM Top 89 024	0.275
18	WM Bottom 88 774	STM Top 88 253	0.521
19	WM Bottom 89 035	STM Top 87 799	1.235
20	SAN Bottom 88 659	WM Top 88 888	0.270
21	SAN Bottom 89 380	WM Top 88 832	0.548
22	SAN Bottom 89 380	WM Top 88 834	0.546
23	SAN Bottom 89 380	WM Top 88 832	0.547
24	WM Bottom 88 888	STM Top 87 921	0.948
25	WM Bottom 89 415	STM Top 89 078	0.339
26	WM Bottom 89 645	STM Top 88 124	0.521

Crossing No.	PIPE 1	PIPE 2	Clearance
27	SAN Bottom 89 305	WM Top 88 779	0.526
28	WM Bottom 89 181	STM Top 88 464	0.716
29	WM Bottom 88 751	STM Top 87 303	1.358
30	SAN Bottom 89 205	WM Top 88 096	0.609
31	WM Bottom 88 870	STM Top 87 500	1.370
32	WM Bottom 88 820	STM Top 88 341	0.479
33	STM Bottom 89 304	WM Top 88 788	0.516
34	WM Bottom 89 304	WM Top 88 772	0.533
35	WM Bottom 89 041	STM Top 88 757	0.284
36	STM Bottom 89 304	WM Top 88 804	0.500
37	WM Bottom 89 245	STM Top 88 965	0.280
38	STM Bottom 89 308	WM Top 88 805	0.503
39	SAN Bottom 88 881	WM Top 88 272	0.608
40	WM Bottom 88 953	STM Top 87 517	1.436
41	WM Bottom 88 953	STM Top 88 398	0.555
42	WM Bottom 88 585	STM Top 88 885	0.500
43	WM Bottom 89 385	STM Top 88 882	0.502
44	WM Bottom 89 230	STM Top 87 919	1.374
45	WM Bottom 89 287	STM Top 89 033	0.254
46	SAN Bottom 88 634	WM Top 88 832	0.502
47	SAN Bottom 89 347	WM Top 88 725	0.521
48	SAN Bottom 89 282	WM Top 88 787	0.505
49	WM Bottom 89 507	STM Top 89 187	0.320
50	WM Bottom 88 841	STM Top 88 056	0.885
51	WM Bottom 89 693	STM Top 88 916	0.877
52	WM Bottom 89 294	STM Top 88 781	0.503

Crossing No.	PIPE 1	PIPE 2	Clearance
53	SAN Bottom 89 226	STM Top 88 240	0.985
54	SAN Bottom 88 501	STM Top 87 655	0.845
55	STM Bottom 89 209	STM Top 88 262	1.047
56	SAN Bottom 89 290	STM Top 88 057	1.033
57	SAN Bottom 88 908	STM Top 88 613	0.295
58	SAN Bottom 89 261	STM Top 88 613	0.634
59	WM Bottom 88 099	STM Top 87 429	0.670
60	SAN Bottom 88 245	STM Top 87 468	0.777
61	SAN Bottom 89 742	STM Top 89 374	0.368
62	SAN Bottom 89 005	STM Top 87 506	0.979
63	SAN Bottom 88 887	STM Top 87 923	0.964
64	SAN Bottom 89 048	STM Top 88 054	0.984
65	SAN Bottom 89 326	STM Top 87 721	1.595
66	SAN Bottom 89 326	STM Top 87 707	1.619
67	SAN Bottom 88 700	STM Top 87 782	0.918
68	SAN Bottom 89 265	STM Top 87 885	1.410
69	SAN Bottom 88 502	STM Top 87 917	0.986
70	SAN Bottom 89 036	STM Top 87 582	1.054
71	SAN Bottom 88 683	STM Top 87 614	0.969
72	SAN Bottom 89 432	STM Top 87 617	0.815
73	SAN Bottom 89 347	STM Top 87 657	1.690
74	SAN Bottom 89 321	STM Top 87 690	1.641
75	SAN Bottom 89 245	STM Top 87 773	1.472
76	SAN Bottom 89 221	STM Top 87 819	1.402
77	SAN Bottom 89 323	STM Top 89 014	0.309
78	SAN Bottom 89 243	STM Top 88 806	0.438
79	STM Bottom 89 278	STM Top 88 006	0.272
80	STM Bottom 89 274	STM Top 88 538	0.527
81	STM Bottom 89 274	STM Top 88 538	0.739
82	STM Bottom 89 689	STM Top 88 787	0.486
83	STM Bottom 89 689	STM Top 88 360	1.329

NOTES :

- ALL MATERIALS AND CONSTRUCTION IS TO BE IN ACCORDANCE WITH THE CURRENT CITY OF OTTAWA STANDARD DRAWINGS & SPECIFICATIONS OR OPS/DRS IF CITY DRAWINGS AND SPECIFICATIONS DO NOT APPLY.
- THE POSITION OF UNDERGROUND AND ABOVEGROUND SERVICE, UTILITIES AND STRUCTURES ARE NOT NECESSARILY SHOWN ON THE CONTRACT DRAWINGS AND WHERE SHOWN, THE ACCURACY OF THE POSITION OF SUCH SERVICE, UTILITIES AND STRUCTURES IS NOT GUARANTEED. THE CONTRACTOR IS RESPONSIBLE FOR DETERMINING THE EXACT LOCATION, SIZE, MATERIAL AND ELEVATION OF ALL EXISTING SERVICES AND UTILITIES PRIOR TO CONSTRUCTION.
- THE CONTRACTOR SHALL REPORT ALL CONFLICTS, DISCOVERIES OF ERROR AND DISCREPANCIES TO THE ENGINEER.
- THE CONTRACTOR SHALL BE RESPONSIBLE TO PROTECT AND ASSUME RESPONSIBILITY FOR ALL UTILITIES WHETHER OR NOT SHOWN ON THESE DRAWINGS.
- THE CONTRACTOR SHALL BE RESPONSIBLE TO PROTECT ALL LANDS BEYOND THE SITE LIMITS. ANY AREAS BEYOND THE SITE LIMITS, WHICH ARE DISTURBED DURING CONSTRUCTION, SHALL BE REPAIRED AND RESTORED TO ORIGINAL CONDITION OR BETTER, TO THE SATISFACTION OF THE ADJACENT LAND OWNER. THE OWNER, THE OWNERS REPRESENTATIVES AND/OR THE AUTHORITY HAVING JURISDICTION AT THE EXPENSE OF THE CONTRACTOR.
- WHERE NECESSARY, THE CONTRACTOR SHALL IMPLEMENT A TRAFFIC MANAGEMENT PLAN TO THE SATISFACTION OF THE CITY OF OTTAWA. ALL CONSTRUCTION SIGNAGE MUST CONFORM TO THE LATEST VERSION OF THE M.T.O. MANUAL OF UNIFORM TRAFFIC CONTROL DEVICES. ALL TEMPORARY TRAFFIC CONTROL MEASURES MUST BE REMOVED UPON THE COMPLETION OF THE WORKS.
- SHOULD ANY BURIED ARCHAEOLOGICAL REMAINS BE FOUND ON THE PROPERTY DURING CONSTRUCTION ACTIVITIES, THE CONTRACTOR SHALL NOTIFY THE OWNER TO CONTACT THE HERITAGE OPERATIONS UNIT OF THE ONTARIO MINISTRY OF CULTURE. NOTICE MUST BE NOTIFIED IMMEDIATE, AND WORK WITHIN THE AREA SHALL BE CEASED UNTIL FURTHER NOTICE.
- FOR GEOTECHNICAL INFORMATION REFER TO GEOTECHNICAL REPORT NO PG5641-1 PREPARED BY PATERSON GROUP.
- FOR GEOTECHNICAL BENCHMARK AND GEOMETRIC LAYOUT OF STREET AND LOTS, REFER TO TOPOGRAPHICAL SURVEY AND PLAN OF SURVEY PREPARED BY ANNE O'SULLIVAN, VOLLEBERG LTD. BENCHMARK BASED ON CAN-NET VIRTUAL REFERENCE SYSTEM NETWORK.
- FOR SITE PLAN INFORMATION, REFER TO SITE PLAN PREPARED BY RLA ARCHITECTURE.
- FOR NOISE ATTENUATION PLAN REFER TO N-1 PREPARED BY IBI GROUP.
- THESE DRAWINGS ARE NOT TO BE SCALED OR USED FOR LAYOUT PURPOSES.
- ROADWAY SECTIONS REQUIRING GRADE RAISE TO PROPOSED SUB GRADE LEVEL TO BE FILLED WITH ACCEPTABLE NATIVE SAND BORROW OR IMPORTED OPS/ SELECTED SUBGRADE MATERIAL IF NATIVE MATERIAL IS DEFICIENT AS PER RECOMMENDATION OF GEOTECHNICAL ENGINEER.
- IN AREAS WHERE EXISTING GROUND IS BELOW THE PROPOSED ELEVATION OF SEWER AND WATERMANS, GRADE RAISING AND FILLING IS TO BE IN ACCORDANCE WITH THE RECOMMENDATIONS OF THE GEOTECHNICAL REPORT, AS PER CITY GUIDELINES. ALL WATERMANS IN FILL AREAS ARE TO BE TIED WITH RESTRAINING JOINTS AND THRUST BLOCKS.
- THE CONTRACTOR SHALL IMPLEMENT THE EROSION AND SEDIMENT CONTROL PLAN PRIOR TO THE COMMENCEMENT OF ANY SITE CONSTRUCTION. ALL EROSION AND SEDIMENT CONTROL MEASURES SHALL BE INSTALLED TO THE SATISFACTION OF THE ENGINEER OR ANY REGULATORY AGENCY. ALL EROSION AND SEDIMENT CONTROL MEASURES SHALL BE MAINTAINED UNTIL VEGETATION IS ESTABLISHED OR UNTIL THE START OF A SUBSEQUENT PHASE.
- CONTRACTORS SHALL BE RESPONSIBLE FOR KEEPING CLEAN ALL ROADS WHICH BECOME COVERED IN DUST, DEBRIS AND/OR MUD AS A RESULT OF ITS CONSTRUCTION OPERATIONS.
- ALL PIPE, CULVERTS, STRUCTURES REFER TO NOMINAL INSIDE DIMENSIONS.
- SHOULD CLAY SEALS BE REQUIRED, THEY SHALL BE INSTALLED AS PER THE RECOMMENDATIONS WITHIN THE GEOTECHNICAL REPORT.
- UNLESS SPECIFICALLY NOTED OTHERWISE, PIPE MATERIALS SHALL BE AS FOLLOWS:
 - WATERMANS TO BE PVC DR18
 - SANITARY SEWER TO BE PVC DR35
 - PERFORATED STORM SEWERS IN REAR YARDS AND LANDSCAPE AREAS TO BE HOPE
 - STORM SEWERS 375MM DIAMETER AND LESS TO BE PVC DR35
 - STORM SEWERS 450MM DIAMETER AND GREATER TO BE CONCRETE, CLASS AS PER OPS/ DR07.010 OR DR7.030, OR HIGHER.
- ALL CONNECTIONS TO EXISTING WATERMANS ARE TO BE COMPLETED BY CITY FORCES. CONTRACTOR IS TO EXCAVATE, BACKFILL, COMPACT AND REINSTATE.
- ANY WATERMAIN WITH LESS THAN 2.4M AND ANY SEWER WITH LESS THAN 2.0M DEPTH OF COVER REQUIRES THERMAL INSULATION AS PER CITY OF OTTAWA STANDARD W22, OR AS APPROVED BY THE ENGINEER.
- ALL STUBBED SEWERS SHALL HAVE PRE-MANUFACTURED CAPS INSTALLED.
- ALL CATCHBASINS SHALL HAVE A 600MM SUMP. ALL CATCHBASIN MANHOLES, AND ALL STORM MANHOLES WITH OUTLETTING PIPE SIZES LESS THAN 900MM, SHALL HAVE A 300MM SUMP.
- ALL SANITARY MANHOLES SHALL BE EQUIPPED WITH A WATERTIGHT COVER.
- ALL LEADS FOR STREET CATCHBASINS AND CURB INLET CATCHBASINS CONNECTED TO MAIN SHALL BE 200MM Ø PVC DR35 @ MIN 2% SLOPE UNLESS NOTED OTHERWISE. ALL LEADS FOR RYCB'S CONNECTED TO MAIN SHALL BE 200MM Ø PVC DR35 @ MIN 1% SLOPE UNLESS NOTED OTHERWISE.
- UNLESS SPECIFICALLY NOTED OTHERWISE, ALL STREET CATCHBASINS SHALL BE INSTALLED WITH TWO - 3.0M MINIMUM SUBDRAINS INSTALLED LONGITUDINALLY, PARALLEL WITH THE CURB. ALL CATCHBASINS IN ASPHALT AREAS NOT ADJACENT TO A CURB, SHALL BE INSTALLED WITH FOUR - 3.0M MINIMUM SUBDRAINS INSTALLED ORTHOGONALLY.
- INLET CONTROL DEVICES SHALL BE INSTALLED PRIOR TO COMPLETING THE ROAD BASE (GRANULAR A).
- ALL SEWER SERVICE LATERALS WITH MAINLINE CONNECTIONS DEEPER THAN 5.0M REQUIRE A CONTROLLED SETTLEMENT JOINT.
- EACH BUILDING SHALL BE EQUIPPED WITH A SANITARY AND STORM SEWER BACKWATER VALVE AND CLEAN-OUT ON ITS PRIMARY SERVICE. AS PER ONTARIO BUILDING CODE REQUIREMENTS (BY OTHERS).
- THE HGL PROVIDED IS BASED ON HYDRAULIC MODELING COMPLETED USING PCSWMM AND THE 100 YEAR CHICAGO STORM EVENT (C3H10010).
- THE SUBGRADE OF ALL STRUCTURES, PIPE, ROADS, SIDEWALKS, WALKWAYS, AND BUILDINGS SHALL BE INSPECTED BY THE GEOTECHNICAL ENGINEER PRIOR TO PROCEEDING WITH CONSTRUCTION.
- TOP COURSE ASPHALT SHALL NOT BE PLACED UNTIL THE FINAL CDTY INSPECTION AND NECESSARY REPAIRS HAVE BEEN COMPLETED TO THE SATISFACTION OF THE ENGINEER AND THE CITY OF OTTAWA.
- ALL RETAINING WALLS GREATER THAN 1.0M IN HEIGHT SHALL BE DESIGNED BY A QUALIFIED STRUCTURAL ENGINEER.
- ALL RETAINING WALLS GREATER THAN 0.6M IN HEIGHT REQUIRE A GUARD. ANY GUARD ON A RETAINING WALL GREATER THAN 1.0M IN HEIGHT SHALL BE DESIGNED BY THE QUALIFIED STRUCTURAL ENGINEER RESPONSIBLE FOR THE WALL DESIGN.
- UPON COMPLETION OF THE RETAINING WALL, THE CONTRACTOR SHALL REQUEST A PERFORMANCE CERTIFICATE FROM THE QUALIFIED ENGINEER RESPONSIBLE FOR THE WALL DESIGN.

CATCHBASIN/CATCHBASIN MANHOLE/DITCH INLET DATA

STRUCTURE ID	STORM AREA ID	STRUCTURE	FRAME & COVER	ELEVATION		OUTLET PIPE		INLET CONTROL DEVICE			COMMENTS	
				TOP OF GRATE	INVERT	DIAMETER (mm)	TYPE	100yr Dynamic HEAD	RESTRICTED FLOW (l/s)	ICD TYPE		ORIFICE SIZE (mm dia.)
CB1	MH126	OPSD 705.010	S19	91.30	89.90	200	PVC DR35	1.630				
CB2	MH125	OPSD 705.010	S19	91.25	89.85	200	PVC DR35	1.690	14.00	CUSTOM IPEX MHF		
CB3	MH124	OPSD 705.010	S19	91.25	89.85	200	PVC DR35	1.680				
CB4	MH102	OPSD 705.010	S19	91.30	89.90	200	PVC DR35	1.610	8.00	CUSTOM IPEX LMF		
CB5	MH101	OPSD 705.010	S19	91.17	89.77	200	PVC DR35	1.640	8.00	CUSTOM IPEX LMF		
CB6	MH100	OPSD 705.010	S19	91.16	89.76	200	PVC DR35	1.540	8.00	CUSTOM IPEX LMF		
CB7	MH113	OPSD 705.010	S19	91.25	89.85	200	PVC DR35	1.660	12.00	CUSTOM IPEX MHF		
CB8	CBMH9	OPSD 705.010	S19	91.33	89.93	200	PVC DR35	1.600	18.00	IPEX MHF		
CBMH9	CBMH9B	OPSD 705.010	S19	91.35	89.95	200	PVC DR35	1.690	13.00	CUSTOM IPEX MHF		
CB10	MH110	OPSD 705.010	S19	91.35	89.95	200	PVC DR35	1.610	23.00	CUSTOM IPEX HF		
CB11	MH127	OPSD 705.010	S19	91.20	89.80	200	PVC DR35	1.660				
CB12	MH127B	OPSD 705.010	S19	91.20	89.80	200	PVC DR35	1.660	12.00	CUSTOM IPEX MHF		
CB13	MH130	OPSD 705.010	S19	91.30	89.90	200	PVC DR35	1.650	8.00	CUSTOM IPEX LMF		
CBMH14	MH111	OPSD 705.010	S19	91.35	89.95	200	PVC DR35	1.680	8.00	IPEX LMF		
Temp CB	MH109	OPSD 705.010	S19	91.25	87.70	375	PVC DR35	3.860	28.00	IPEX MHF		
CCB7	MH100C	S31	S31	91.25	89.85	200	PVC DR35	1.410	10.00	CUSTOM IPEX MHF		
ECB8	MH100D	S31	S31	91.25	89.85	200	PVC DR35	1.610	10.00	CUSTOM IPEX MHF		
TCB5	MH109B	S31	S31	91.40	90.00	200	PVC DR35	1.680	8.00	CUSTOM IPEX LMF		
CBMH126	CBMH126	OPSD 705.010	S25 & S24.1	91.48	86.90	450	CONC	4.844	14.00	CUSTOM IPEX MHF		
MH128	MH127	OPSD 705.010	S25 & S24.1	91.52	87.53	450	CONC	4.156	12.00	CUSTOM IPEX MHF		
CBMH134	MH113	OPSD 705.010	S25 & S24.1	91.47	87.13	600	CONC	4.678	12.00	CUSTOM IPEX MHF		

ROADWAY STRUCTURE:

- MAIN DRIVE AISLE/FIRE ROUTE (.690mm)**
- 40mm - SUPERPAVE 12.5 ASPHALTIC CONCRETE
 - 50mm - SUPERPAVE 19.0 ASPHALTIC CONCRETE
 - 150mm - OPSS GRANULAR "A" CRUSHED STONE
 - 450mm - OPSS GRANULAR "B" TYPE II

- PARKING AREAS (.640mm)**
- 40mm - SUPERPAVE 12.5 ASPHALTIC CONCRETE
 - 50mm - SUPERPAVE 19.0 ASPHALTIC CONCRETE
 - 150mm - OPSS GRANULAR "A" CRUSHED STONE
 - 300mm - OPSS GRANULAR "B" TYPE II

CLIENT
CLARIDGE HOMES
210 Gladstone Ave. Ottawa, On K0P 0Y6

COPYRIGHT
This drawing has been prepared solely for the intended use, thus any reproduction or distribution for any purpose other than that authorized by IBI Group is forbidden. When dimensions shall have precedence over scaled dimensions. Contractors shall verify and be responsible for all dimensions and conditions on the job, and IBI Group shall be informed of any variations from the dimension and conditions shown on the drawing. Shop drawings shall be submitted to IBI Group for general conformance before proceeding with fabrication.

IBI Group Professional Services (Canada) Inc.
is a member of the IBI Group of companies.

ISSUES

No.	DESCRIPTION	DATE
1	ISSUED FOR CITY REVIEW	2021-12-15
2	REVISED PER CITY COMMENTS	2022-08-15
3	REVISED PER CITY COMMENTS	2022-12-16



CONSULTANTS

SEE 010, FOR NOTES, LEGEND, CB TABLE, STREET SECTIONS AND DETAILS

SEAL

LICENCED PROFESSIONAL ENGINEER
L.D. G. YANNOPOULOS
2022-12-16
PROVINCE OF ONTARIO

LICENCED PROFESSIONAL ENGINEER
W. ZHUANG
100231427
2022-12-16
PROVINCE OF ONTARIO

IBI GROUP
400 - 333 Preston Street
Ottawa ON K1S 5M4 Canada
tel 613 225 1311 fax 613 225 9868
ibigroup.com

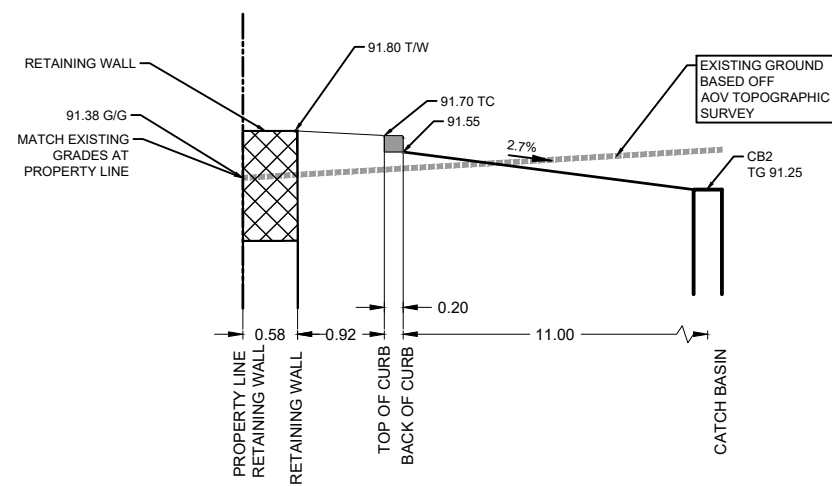
PROJECT
ZENS - 4624 SPRATT

PROJECT NO: 135856
DRAWN BY: D.D./S.G.
PROJECT MGR: R.M.
CHECKED BY: A.Z.
APPROVED BY: R.M./D.Y.

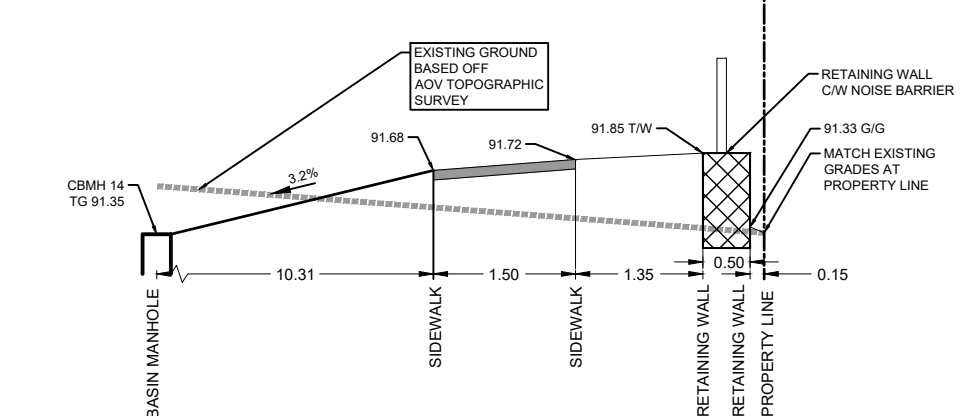
SHEET TITLE
GENERAL NOTES, LEGEND AND CB DATA TABLE

SHEET NUMBER **C-010** **ISSUE** **3**

CITY FILE No. D07-12-22-0021
CITY PLAN No. 18727
Last Saved: December 15, 2022, by stefan gasser
Printed: Friday, December 16, 2022 8:27:16 AM by Stefan Gasser
File Location: \\113856_4624_Spratt\7_0_Production\7_03_Design\04_Civil\Sheet\C-010 NOTES-LEGEND-CB DATA.dwg



DETAIL A-A
N.T.S.



DETAIL B-B
N.T.S.

CLIENT
CLARIDGE HOMES
 210 Gladstone Ave. Ottawa, On K0P 0Y6

COPYRIGHT
 This drawing has been prepared solely for the intended use. Any reproduction or distribution for any purpose other than authorized by IBI Group is forbidden. When dimensions shall have precedence over scaled dimensions. Contractors shall verify and be responsible for all dimensions and conditions on the job, and IBI Group shall be informed of any variations from the dimensions and conditions shown on the drawing. Shop drawings shall be submitted to IBI Group for general concurrence before proceeding with fabrication.

IBI Group Professional Services (Canada) Inc.
 is a member of the IBI Group of companies.

ISSUES

No.	DESCRIPTION	DATE
1	ISSUED FOR CITY REVIEW	2021-12-15
2	REVISED PER CITY COMMENTS	2022-08-15
3	REVISED PER CITY COMMENTS	2022-12-16

SEE 010 FOR NOTES, LEGEND, CB TABLE, STREET SECTIONS AND DETAILS

CONSULTANTS

SEAL

IBI GROUP
 Suite 400 - 333 Preston Street
 Ottawa ON K1S 5N4 Canada
 Tel: 613 225 1311 / 613 241 3300 Fax: 613 225 9868
 ibigroup.com

PROJECT
ZENS - 4624 SPRATT

PROJECT NO:
 135856

DRAWN BY:
 D.D./S.G.

CHECKED BY:
 A.Z.

PROJECT MGR:
 R.M.

APPROVED BY:
 R.M./D.Y.

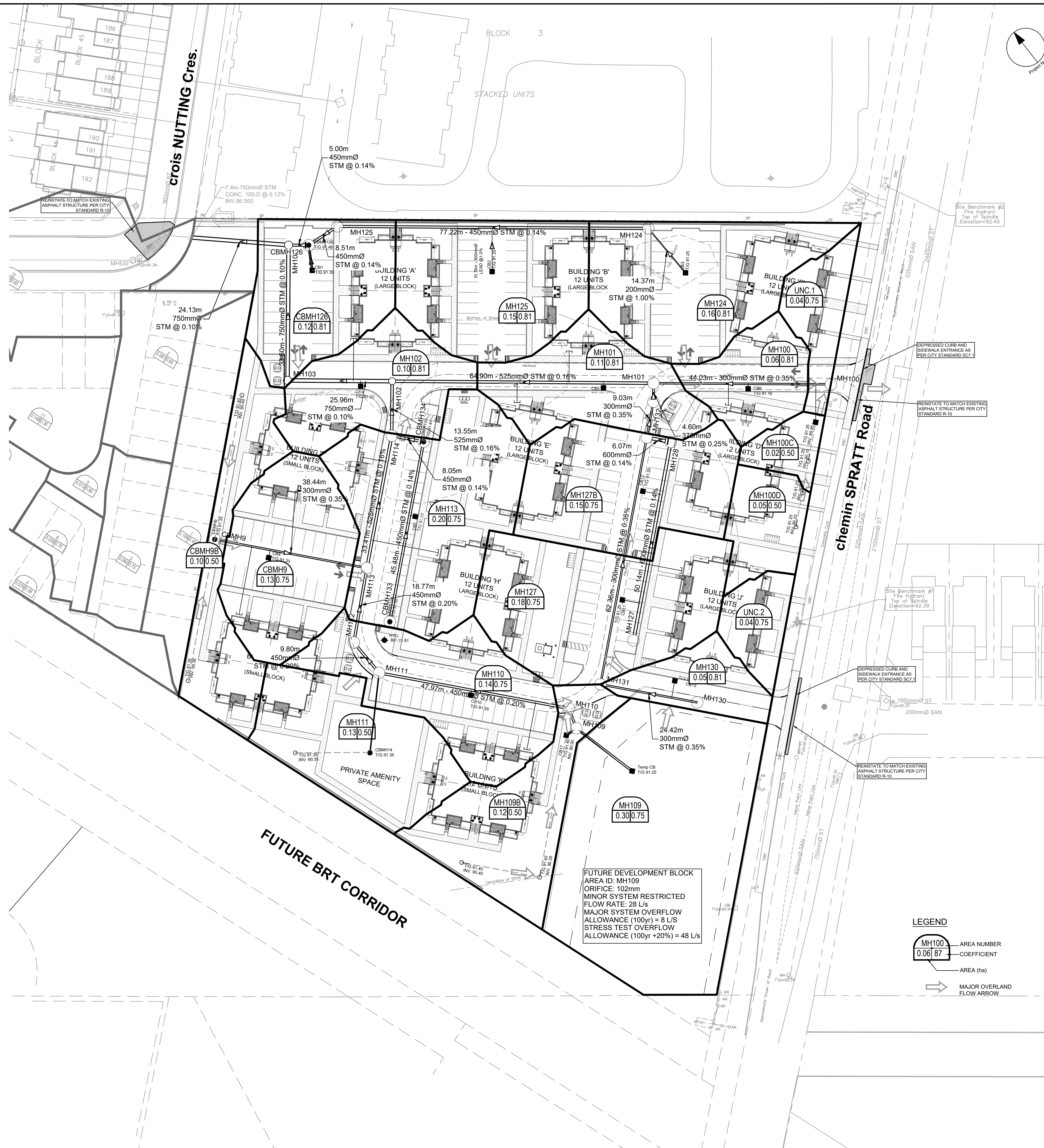
SHEET TITLE
GRADING PLAN

SHEET NUMBER
C-200

ISSUE
3

CITY PLAN No. 18727

File Location: \\113856_4624_Spratt_17_0_Production\7_03_Design\04_Civil\Sheet\C-200_Grading\PLAN.dwg
 Last Saved: December 16, 2022, 9:15:51 AM by Stefan Geisser
 Plot: Friday, December 16, 2022, 9:15:51 AM by Stefan Geisser
 SCALE CHECK



CLIENT

COPYRIGHT
 This drawing has been prepared solely for the intended use. Any reproduction or distribution for any purpose other than authorized by IBI Group is forbidden. When dimensions shall have precedence over scaled dimensions, Contractors shall verify and be responsible for all dimensions and conditions on the job, and IBI Group shall be released of any liability from the dimensions and conditions shown on the drawing. Shop drawings shall be submitted to IBI Group for general conformance before proceeding with fabrication.
 IBI Group Professional Services (Canada) Inc.
 is a member of the IBI Group of companies.

ISSUES

No.	DESCRIPTION	DATE
1	ISSUED FOR CITY REVIEW	2021-12-15
2	REVISED PER CITY COMMENTS	2022-08-15
3	REVISED PER CITY COMMENTS	2022-12-16

SEE 010 FOR NOTES, LEGEND, CB TABLE, STREET SECTIONS AND DETAILS

CONSULTANTS

SEAL

IBI GROUP
 Suite 400 - 333 Preston Street
 Ottawa ON K1S 5N4 Canada
 Tel: 613 225 1311 / 613 241 3300 Fax: 613 225 9868
 ibigroup.com

PROJECT
ZENS - 4624 SPRATT

PROJECT NO: 135856
DRAWN BY: D.D./S.G. **CHECKED BY:** A.Z.
PROJECT MGR: R.M. **APPROVED BY:** R.M./D.Y.

SHEET TITLE
STORM DRAINAGE AREA PLAN

SHEET NUMBER C-500 **ISSUE** 3

CITY PLAN No. 18727

File Location: J:\135856_4624_Spratt\17_0_Production\17_03_Design\04_Civil\Sheet\C-500 STORM DRAINAGE AREA PLAN.dwg Last Saved: December 16, 2022, by: afdan geisler Plotted: Friday, December 16, 2022 9:16:51 AM by: Stefan Geisler
 SCALE CHECK
CITY FILE No. D07-12-22-0021



CLIENT
CLARIDGE HOMES
 210 Gladstone Ave. Ottawa, On K0P 0Y6

COPYRIGHT
 This drawing has been prepared solely for the intended use, thus any reproduction or distribution for any purpose other than authorized by IBI Group is forbidden. When dimensions shall have precedence over scaled dimensions. Contractors shall verify and be responsible for all dimensions and conditions on the job, and IBI Group shall be relieved of any liabilities from the dimensions and conditions shown on the drawing. Shop drawings shall be submitted to IBI Group for general concurrence before proceeding with fabrication.
 IBI Group Professional Services (Canada) Inc.
 is a member of the IBI Group of companies.

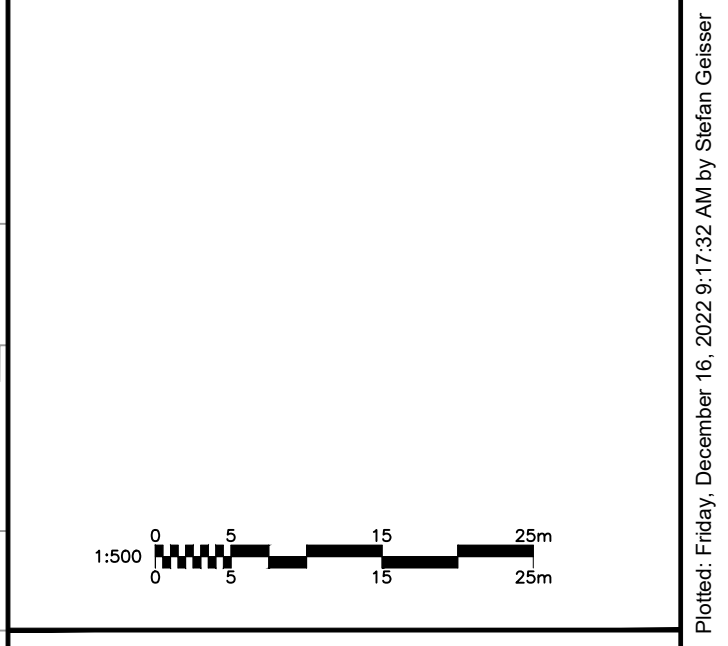
ISSUES

No.	DESCRIPTION	DATE
1	ISSUED FOR CITY REVIEW	2021-12-15
2	REVISED PER CITY COMMENTS	2022-08-15
3	REVISED PER CITY COMMENTS	2022-12-16

SEE 010, FOR NOTES, LEGEND, CB TABLE, STREET SECTIONS AND DETAILS.



CONSULTANTS



SEAL

IBI GROUP
 Suite 400 - 333 Preston Street
 Ottawa ON K1S 5N4 Canada
 Tel: 613 225 1311 / 613 241 3300 Fax: 613 225 9868
 ibigroup.com

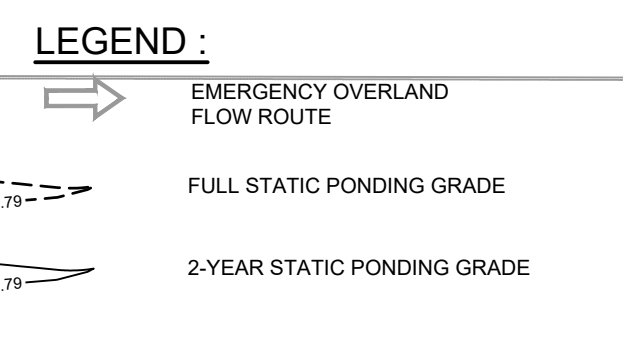
PROJECT
ZENS - 4624 SPRATT

PROJECT NO: 135856	CHECKED BY: A.Z.
DRAWN BY: D.D./S.G.	APPROVED BY: R.M./D.Y.
PROJECT MGR: R.M.	

SHEET TITLE
PONDING PLAN

SHEET NUMBER
C-600

ISSUE
3



File Location: \\113856_4624_Spratt\7_0_Production\7_03_Design\04_Civil\Sheets\C-600_PONDING PLAN.dwg Last Saved: December 15, 2022, by stefan.gasser
 Project: Friday, December 16, 2022, 9:17:52 AM by Stefan.Gasser
 SCALE CHECK
 CITY FILE No. D07-12-22-0021
 CITY PLAN No. 18729

