

IT IS THE RESPONSIBILITY OF THE APPROPRIATE CONTRACTOR TO CHECK AND VERIFY ALL DIMENSIONS ON SITE AND TO REPORT ALL ERRORS AND/OR OMISSIONS TO THE ARCHITECT. ALL CONTRACTORS MUST COMPLY WITH ALL PERTINENT CODES AND BY-LAWS. THIS DRAWING MAY NOT BE USED FOR CONSTRUCTION UNTIL SIGNED BY THE ARCHITECT. DO NOT SCALE DRAWINGS.

NOTATION SYMBOLS:

- (00) INDICATES DRAWING NOTES, LISTED ON EACH SHEET.
- (00) INDICATES ASSEMBLY TYPE; REFER TO TYPICAL ASSEMBLIES SCHEDULE.
- (00) INDICATES WINDOW TYPE; REFER TO WINDOW ELEVATIONS AND DETAILS ON A900 SERIES.
- (000) INDICATES DOOR TYPE; REFER TO DOOR SCHEDULE AND DETAILS ON A900 SERIES.
- DETAIL NUMBER
- (00) TITLE SCALE
- DETAIL REFERENCE PAGE

DRAWING NOTES:

- 01 ASPHALT SHINGLES: WEATHERED WOOD
- 02 PREFINISHED ALUMINUM FASCIA & VENTED SOFFIT (CHARCOAL).
- 03 BEIGE BRICK: FORTERRA, MAX SIZE, RUTHERFORD
- 04 HARDIE BOARD ACCENT PANEL C/W ALUMINUM TRIM PIECES (COBBLESTONE)
- 05 HARDIE BOARD ACCENT PANEL C/W ALUMINUM TRIM PIECES (MIDNIGHT BLACK)
- 06 VINYL SIDING: STORM
- 07 PRECAST LINTELS & SILLS
- 08 125mm PRECAST CONCRETE ACCENT BAND
- 09 ALUMINUM BALCONY RAILING c/w PICKETS @ 100mm o.c. MAX (BLACK) PROVIDE P-ENG SIGNED DETAILS TO SITE INSPECTOR PRIOR TO INSTALLATION
- 10 PRE-FINISHED ALUMINUM FLASHING (CHARCOAL)
- 11 ORNAMENTAL METAL RODS (CHARCOAL)
- 12 CONCRETE STEPS
- 13 STACKED PRECAST CONCRETE UNIT PLANTER WALL
- 14 CONCRETE PARGING

| | | |
|---|----------------------|------------|
| 1 | ISSUED FOR SITE PLAN | 2022-02-17 |
|---|----------------------|------------|

| No. | DESCRIPTION | DATE |
|-----|-------------|------|
|-----|-------------|------|

REVISIONS:

| | | |
|-----------------------|--|--------------|
| ARCHITECT SEAL: | | NORTH ARROW: |
| | | |
| SEAL DATE: STAMP DATE | | |

CLIENT:

ARCHITECT:

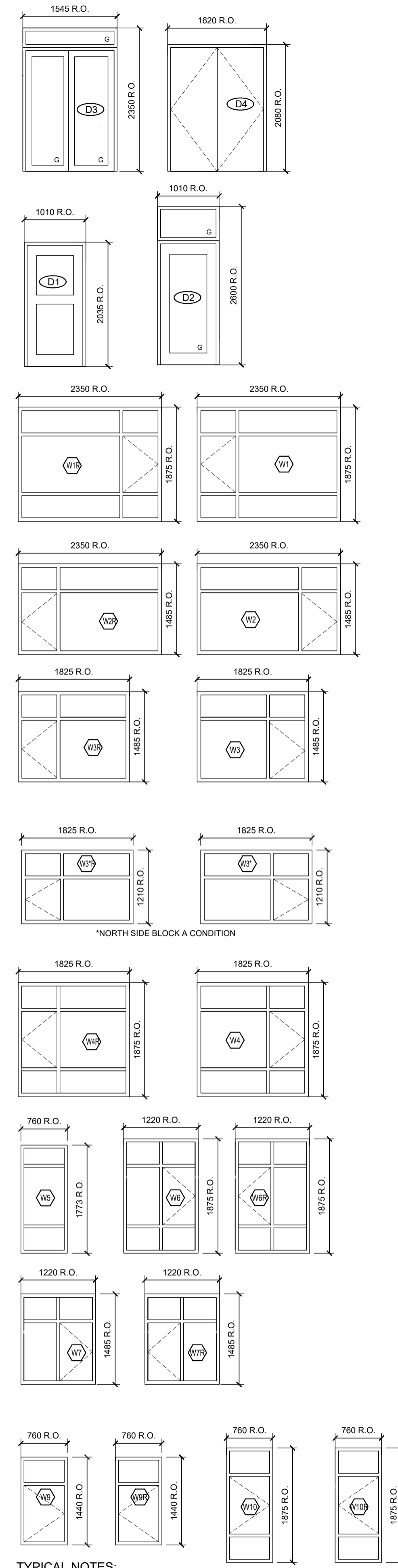
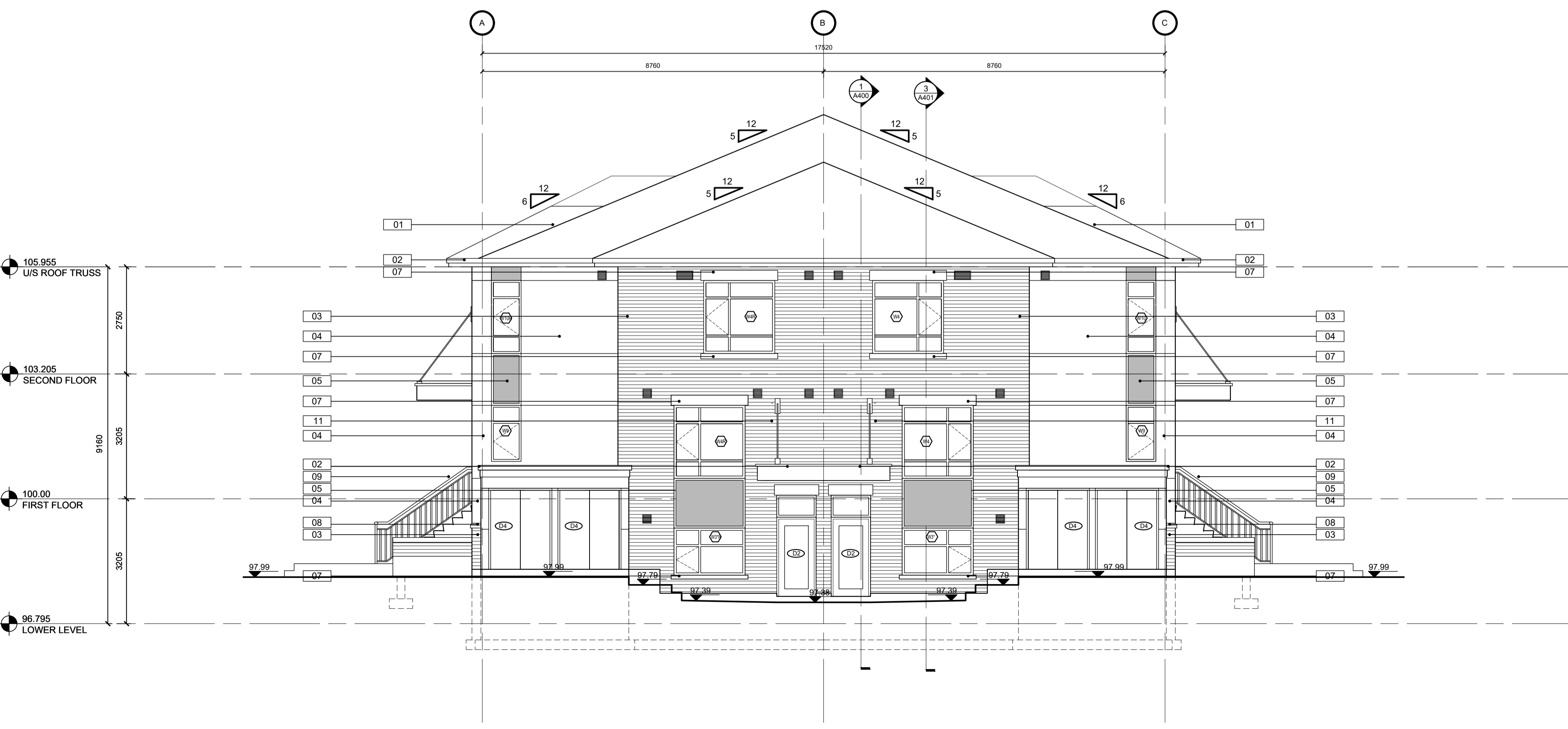
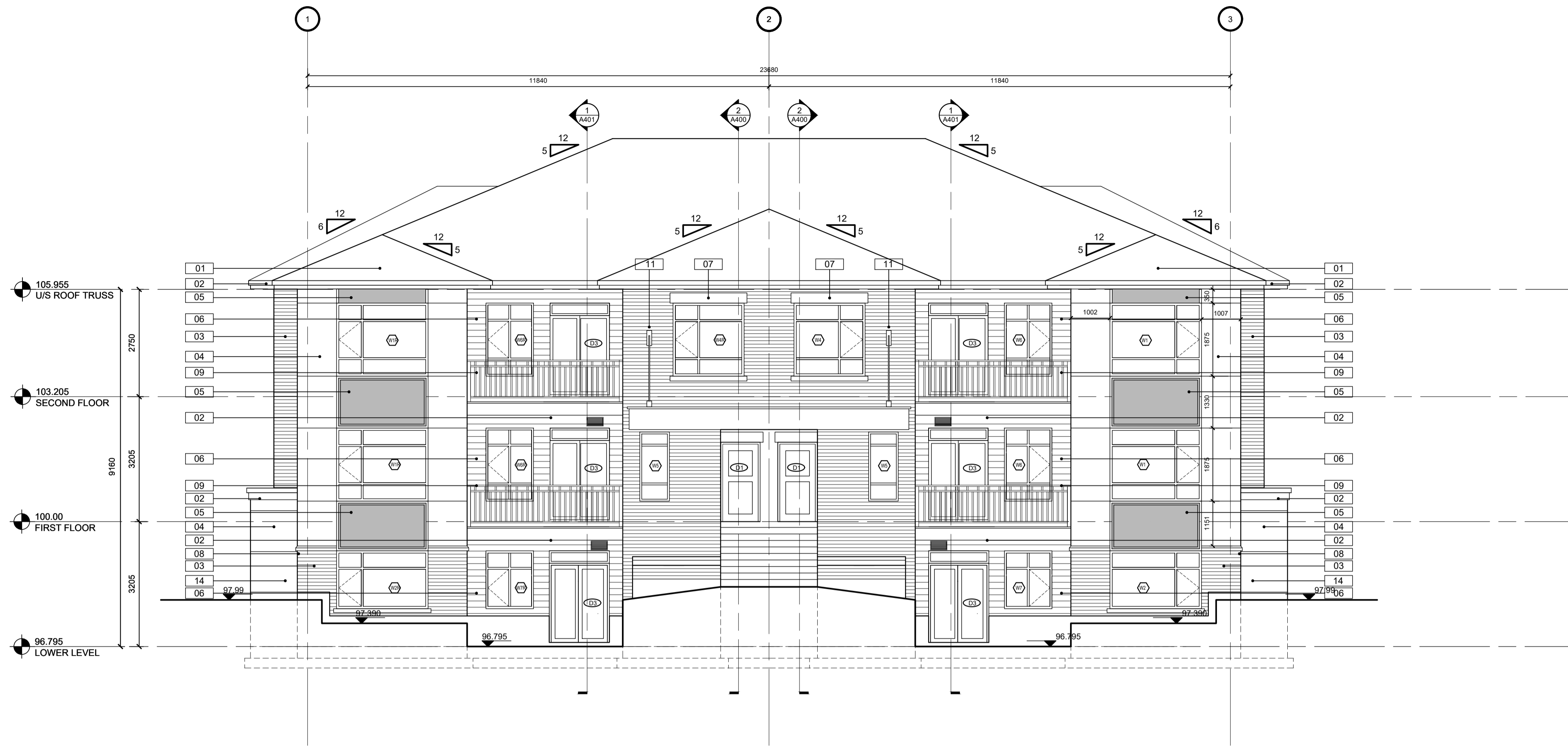
roderick lahey architect inc.
56 beech street, ottawa, ontario K1S 3J6
t. 613.724.9932 f. 613.724.1209 rlaarchitecture.ca

PROJECT TITLE: (LARGE)
4624 SPRATT BLOCK -
OTTAWA ONTARIO

SHEET TITLE:
ELEVATIONS WINDOW & DOOR SCHEDULE

| | |
|---------------------|--------------------------|
| DRAWN: CM | CHECKED: RLA |
| SCALE: 1:75 | SHEET No. A200 |
| PROJECT No. 2101 | |

TYPICAL NOTES:
WINDOWS TO CONFORM CAN/CSA-A440.1 AND CAN/CSA-A440
WINDOWS AND PATIO DOORS TO HAVE A MAX. U VALUE OF 1.6
EXTERIOR SWING DOORS TO COMPLY WITH ASTM E283
GLASS IN DOORS AND SIDE LIGHTS TO BE TEMPERED GLASS
CONFORMING TO CAN/CSG-12.1-M
BUILDING A & F REQUIRE WINDOWS WITH STC RATING NOT LESS THAN 31 IN ACCORDANCE WITH ASTM E90.



IT IS THE RESPONSIBILITY OF THE APPROPRIATE CONTRACTOR TO CHECK AND VERIFY ALL DIMENSIONS ON SITE AND TO REPORT ALL ERRORS AND/OR OMISSIONS TO THE ARCHITECT. ALL CONTRACTORS MUST COMPLY WITH ALL PERTINENT CODES AND BY-LAWS. THIS DRAWING MAY NOT BE USED FOR CONSTRUCTION UNTIL SIGNED BY THE ARCHITECT. DO NOT SCALE DRAWINGS.

NOTATION SYMBOLS:

- INDICATES DRAWING NOTES, LISTED ON EACH SHEET.
- INDICATES ASSEMBLY TYPE; REFER TO TYPICAL ASSEMBLIES SCHEDULED.
- INDICATES WINDOW TYPE; REFER TO WINDOW ELEVATIONS AND DETAILS ON A900 SERIES.
- INDICATES DOOR TYPE; REFER TO DOOR SCHEDULE AND DETAILS ON A900 SERIES.
- DETAIL NUMBER
- TITLE SCALE
- DETAIL REFERENCE PAGE

DRAWING NOTES:

- ASPHALT SHINGLES: WEATHERED WOOD
- PREFINISHED ALUMINUM FASCIA & VENTED SOFFIT (CHARCOAL).
- BEIGE BRICK: FORTERRA, MAX SIZE, RUTHERFORD
- HARDIE BOARD ACCENT PANEL C/W ALUMINUM TRIM PIECES (COBBLESTONE)
- HARDIE BOARD ACCENT PANEL C/W ALUMINUM TRIM PIECES (MIDNIGHT BLACK)
- VINYL SIDING; STORM
- PRECAST LINTELS & SILLS
- 125mm PRECAST CONCRETE ACCENT BAND
- ALUMINUM BALCONY RAILING c/w PICKETS @ 100mm o.c. MAX. (BLACK) PROVIDE P.ENG SIGNED DETAILS TO SITE INSPECTOR PRIOR TO INSTALLATION
- PRE-FINISHED ALUMINUM FLASHING (CHARCOAL)
- ORNAMENTAL METAL RODS (CHARCOAL)
- CONCRETE STEPS
- STACKED PRECAST CONCRETE UNIT PLANTER WALL
- CONCRETE PARGING

| | | |
|-----|----------------------|------------|
| 1 | ISSUED FOR SITE PLAN | 2022-02-17 |
| No. | DESCRIPTION | DATE |

REVISIONS:

ARCHITECT SEAL:

 SEAL DATE: STAMP DATE

NORTH ARROW:

CLIENT:



ARCHITECT:
 rla/architecture
 roderick lahey architect inc.
 56 beech street, ottawa, ontario K1S 3J6
 t. 613.724.9932 f. 613.724.1209 rlaarchitecture.ca

PROJECT TITLE:
 (LARGE)
 4624 SPRATT
 BLOCK -
 OTTAWA ONTARIO

SHEET TITLE:
 ELEVATIONS
 WINDOW & DOOR
 SCHEDULE

| | |
|---------------------|-------------------|
| DRAWN: CM | CHECKED: RLA |
| SCALE: 1:75 | SHEET No. A201 |
| PROJECT No. 2101 | |

TYPICAL NOTES:
 WINDOWS TO CONFORM CAN/CSA-A440.1 AND CAN/CSA-A440
 WINDOWS AND PATIO DOORS TO HAVE A MAX. U VALUE OF 1.6
 EXTERIOR SWING DOORS TO COMPLY WITH ASTM E283
 GLASS IN DOORS AND SIDE LIGHTS TO BE TEMPERED GLASS
 CONFORMING TO CAN/CSG-12.1-M
 BUILDING A & F REQUIRE WINDOWS WITH STC RATING NOT LESS
 THAN 31 IN ACCORDANCE WITH ASTM E90.

3 WINDOWS & EXTERIOR DOOR SCHEDULE
 SCALE = NTS