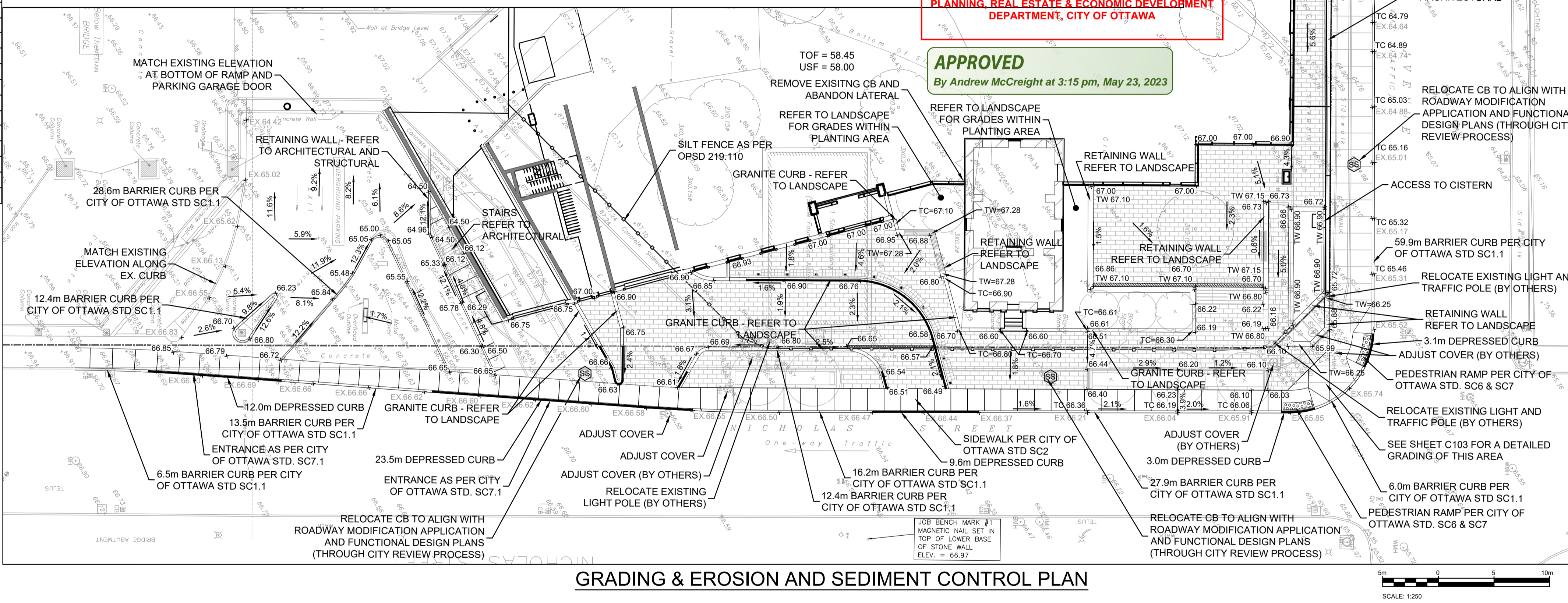
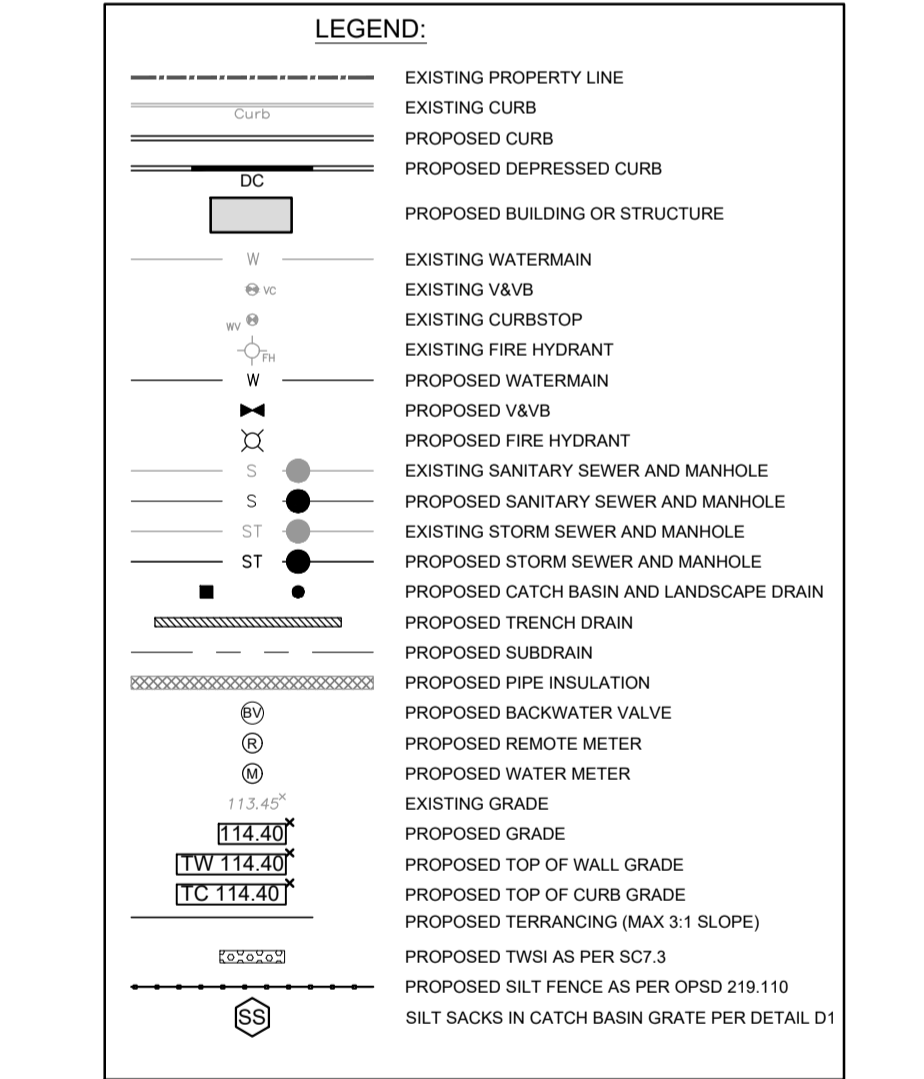
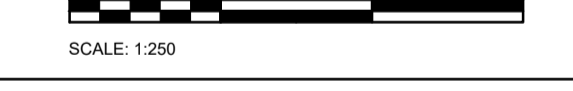


WATERMAIN SERVICE TABLE			
WATER SERVICE	OFFSET FROM EX. WATERMAIN	FITTING	TOP OF WATERMAIN ELEVATION
NICHOLAS ST. No.1	0.0m	TEE	63.64
	2.3m	45° VERT. BEND	63.64
	3.0m	45° VERT. BEND	64.24
	6.0m	45° VERT. BEND	64.24
	6.8m	45° VERT. BEND	63.45m
	9.1m	V&V	63.45m
	11.5m	CAP	63.45m
NICHOLAS ST. No.2	0.0m	TEE	63.64
	2.3m	45° VERT. BEND	63.64
	3.0m	45° VERT. BEND	64.24
	6.0m	45° VERT. BEND	64.24
	6.8m	45° VERT. BEND	63.45m
	9.1m	V&V	63.45m
	11.5m	CAP	63.45m

SERVICING PLAN



GRADING & EROSION AND SEDIMENT CONTROL PLAN



- NOTES: GENERAL**
- CONTRACTOR IS RESPONSIBLE FOR ALL LAYOUT FOR CONSTRUCTION PURPOSES.
 - ALL ELEVATIONS ARE GEODETIC AND UTILIZE METRIC UNITS.
 - JOB BENCH MARK - REFER TO SURVEY BY ADV. LTD. CONFORM WITH CONTRACT ADMINISTRATION PRIOR TO UTILIZATION OF BENCH MARK.
 - ALL GROUND SURFACES SHALL BE EVENLY GRADED WITHOUT PONDING AREAS AND WITHOUT LOW POINTS EXCEPT WHERE APPROVED SWALE OR CATCH BASIN OUTLETS ARE PROVIDED.
 - STRIP AND REMOVE ALL TOPSOIL FROM IMPROVED AREAS. COORDINATE AND SCHEDULE ALL WORK WITH OTHER TRADES AND CONTRACTORS.
 - ALL EDGES OF DISTURBED PAVEMENT SHALL BE SAW CUT TO FORM A NEAT AND STRAIGHT LINE PRIOR TO PLACING NEW PAVEMENT. PAVEMENT REINSTATEMENT SHALL BE PER CITY OF OTTAWA STD. R10.
 - CURBS TO BE CONCRETE BARRIER, CONSTRUCTED AS PER CITY OF OTTAWA DETAIL SC1.1. ELEVATIONS AT CURB INDICATE THE GRADE AT THE FINISHED ROAD SURFACE UNLESS NOTED OTHERWISE.
 - RESTORE PAVEMENT STRUCTURE AND SURFACES ON EXISTING ROADS TO A CONDITION AT LEAST EQUAL TO ORIGINAL AND TO THE SATISFACTION OF THE MUNICIPAL AUTHORITIES.
 - ALL MATERIAL SUPPLIED AND PLACED FOR PARKING LOT AND ACCESS ROAD CONSTRUCTION SHALL BE TO OPSD STANDARDS AND SPECIFICATIONS UNLESS OTHERWISE NOTED. CONSTRUCTION TO OPSD 206, 310 & 314. MATERIALS TO OPSD 1001, 1003 & 1010.
 - ABUTTING PROPERTY GRADE TO BE MATCHED.
 - OBTAIN AND PAY FOR ALL NECESSARY PERMITS AND APPROVALS FROM THE MUNICIPAL AUTHORITIES PRIOR TO COMMENCING CONSTRUCTION.
 - MINIMIZE DISTURBANCE TO EXISTING VEGETATION DURING THE EXECUTION OF ALL WORKS.
 - FILTER FABRIC TO BE INSTALLED AND MAINTAINED BETWEEN THE FRAME AND COVER OF ALL CATCHBASINS AND CATCHBASIN MANHOLES DURING THE CONSTRUCTION PERIOD TO MINIMIZE SEDIMENTS ENTERING THE STORM SEWER SYSTEM. ALL GRASSED AREAS MUST BE COMPLETED PRIOR TO THE REMOVAL OF THE FILTER FABRIC IN THE CATCH BASINS.
 - REMOVE FROM SITE ALL EXCESS EXCAVATED MATERIAL UNLESS OTHERWISE DIRECTED FROM THE ENGINEER. EXCAVATE AND REMOVE ALL ORGANIC MATERIAL AND DEBRIS LOCATED WITHIN THE

- PROPOSED BUILDING, PARKING AND ROADWAY LOCATIONS, ANY CONTAMINATED MATERIAL SHALL BE DISPOSED OF AT A LICENSED LANDFILL FACILITY.**
- NOTES: SEWER**
- APPROVAL OF THIS PLAN DOES NOT EXEMPT THE CONTRACTOR FROM THE REQUIREMENTS TO OBTAIN THE VARIOUS PERMITS/APPROVALS REQUIRED TO COMPLETE A CONSTRUCTION PROJECT, SUCH AS BUT NOT LIMITED TO: ROAD CUT PERMITS, SEWER PERMITS, WATER PERMIT, ETC.
 - AT PROPOSED UTILITY CONNECTION POINTS AND CROSSINGS (I.E. STORM SEWER, SANITARY SEWER, WATER, ETC.) THE CONTRACTOR SHALL DETERMINE THE PRECISE LOCATION AND DEPTH AND SIZE OF EXISTING UTILITIES AND REPORT ANY DISCREPANCIES OR CONFLICTS TO THE ENGINEER BEFORE COMMENCING WORK. PROTECT AND ASSUME RESPONSIBILITY FOR ALL EXISTING UTILITIES. REFER TO ARCHITECT AND LANDSCAPE ARCHITECTS DRAWINGS FOR BUILDING, LANDSCAPE, AND HARD SURFACE AREAS AND DIMENSIONS.
 - CONTRACTOR IS RESPONSIBLE TO KEEP THE ROADS FREE AND CLEAN FROM MUD OR DEBRIS.
- NOTES: WATERMAIN**
- SUPPLY AND INSTALL ALL WATERMAIN AND APPURTENANCES IN ACCORDANCE WITH MOST CURRENT CITY OF OTTAWA STANDARDS AND SPECIFICATIONS.
 - WATERMAIN MATERIAL SHALL BE PVC, CL 150, DR-18 IN ACCORDANCE WITH CITY OF OTTAWA STANDARDS AND SPECIFICATIONS.
 - WATERMAIN TO BE INSTALLED AT MINIMUM COVER OF 2.4m BELOW FINISHED GRADE, WHERE REQUIRED, PROVIDE INSULATION IN ACCORDANCE WITH CITY OF OTTAWA STANDARDS W22 AND W23.
 - WATERMAIN BEDDING AS PER CITY OF OTTAWA STANDARD W17.
 - CONCRETE THRUST BLOCKS AND RESTRAINING AS PER DETAILS ON DRAWING C103.
 - CATHODIC PROTECTION REQUIRED FOR ALL IRON FITTINGS.
 - IF WATERMAIN MUST BE DEFLECTED TO MEET ALIGNMENT, ENSURE THAT THE AMOUNT OF DEFLECTION USED IS LESS THAN HALF THAT RECOMMENDED BY THE MANUFACTURER.
 - EXCAVATION, INSTALLATION, AND BACKFILL BY CONTRACTOR. CONNECTIONS AND SHUT-OFFS AT THE MAIN BY CITY.
- NOTES: UNDERGROUND STORMWATER STORAGE**
- UNDERGROUND STORMWATER STORAGE REQUIRED: 142m³

- NOTES: TRENCH DRAIN**
- TRENCH DRAIN TO BE DIRECTED INTERNALLY THROUGH THE UNDERGROUND PARKING GARAGE TO THE UNDERGROUND CISTERN. REFER TO MECHANICAL DRAWINGS FOR DETAILS.
- NOTES: WATERMAIN**
- SUPPLY AND INSTALL ALL WATERMAIN AND APPURTENANCES IN ACCORDANCE WITH MOST CURRENT CITY OF OTTAWA STANDARDS AND SPECIFICATIONS.
 - WATERMAIN MATERIAL SHALL BE PVC, CL 150, DR-18 IN ACCORDANCE WITH CITY OF OTTAWA STANDARDS AND SPECIFICATIONS.
 - WATERMAIN TO BE INSTALLED AT MINIMUM COVER OF 2.4m BELOW FINISHED GRADE, WHERE REQUIRED, PROVIDE INSULATION IN ACCORDANCE WITH CITY OF OTTAWA STANDARDS W22 AND W23.
 - WATERMAIN BEDDING AS PER CITY OF OTTAWA STANDARD W17.
 - CONCRETE THRUST BLOCKS AND RESTRAINING AS PER DETAILS ON DRAWING C103.
 - CATHODIC PROTECTION REQUIRED FOR ALL IRON FITTINGS.
 - IF WATERMAIN MUST BE DEFLECTED TO MEET ALIGNMENT, ENSURE THAT THE AMOUNT OF DEFLECTION USED IS LESS THAN HALF THAT RECOMMENDED BY THE MANUFACTURER.
 - EXCAVATION, INSTALLATION, AND BACKFILL BY CONTRACTOR. CONNECTIONS AND SHUT-OFFS AT THE MAIN BY CITY.
- NOTES: UNDERGROUND STORMWATER STORAGE**
- UNDERGROUND STORMWATER STORAGE REQUIRED: 142m³

- EROSION AND SEDIMENT CONTROL MEASURES:**
- CONTRACTOR IS RESPONSIBLE FOR ALL INSTALLATION, MONITORING, REPAIR AND REMOVAL OF ALL EROSION AND SEDIMENT CONTROL FEATURES. THE CONTRACTOR SHALL IMPLEMENT BEST MANAGEMENT PRACTICES, TO PROVIDE FOR PROTECTION OF THE AREA DRAINAGE SYSTEM AND THE RECEIVING WATERCOURSE, DURING CONSTRUCTION ACTIVITIES. THE CONTRACTOR ACKNOWLEDGES THAT FAILURE TO IMPLEMENT APPROPRIATE EROSION AND SEDIMENT CONTROL MEASURES MAY BE SUBJECT TO PENALTIES IMPOSED BY ANY APPLICABLE REGULATORY AGENCY.
 - SEDIMENT AND EROSION CONTROL PLAN OBJECTIVES:
 - PREVENT SOIL EROSION. THIS CAN RESULT FROM STREAMING RAIN WATER OR WIND EROSION DURING CONSTRUCTION.
 - PREVENT SEDIMENT DEPOSITS IN THE SEWER PIPES AND NEARBY COLLECTING STORMS (AS APPLICABLE).
 - PREVENT AIR POLLUTION FROM PARTICULATE MATTER AND DUST.
- 1. PRIOR TO START OF CONSTRUCTION:**
- PRIOR TO THE REMOVAL OF ANY VEGETATIVE COVER, MOVING OF SOIL AND CONSTRUCTION:
 - INSTALL FILTER CLOTH ON DOWNSTREAM MANHOLE COVERS.
 - INSTALL SILTSACK FILTERS IN ALL CONCRETE CATCH BASIN STRUCTURES.
 - INSPECT MEASURES IMMEDIATELY AFTER INSTALLATION.
 - THE CONTRACTOR MUST SET UP THE MEASURES INDICATED ON THE PLAN, INSPECT THEM FREQUENTLY AND CLEAN AND REPAIR OR REPLACE THE DETERIORATED STRUCTURES. AT THE END OF THE CONSTRUCTION PERIOD, THE CONTRACTOR IS RESPONSIBLE FOR REMOVAL OF THE TEMPORARY STRUCTURES AND RECONDITIONING THE AFFECTED AREAS.
- 2. DURING CONSTRUCTION:**
- SEDIMENT AND EROSION CONTROL MEASURES TO BE CONSTRUCTED AS PER OPSD 805.
 - WHEN SEDIMENT AND EROSION CONTROL MEASURES MUST BE REMOVED TO COMPLETE A PORTION OF THE WORK, THE SAME MEASURES MUST BE REINSTATED UPON THE WORK'S COMPLETION.

- WORK TO BE DONE IN THE VICINITY OF MAJOR WATERWAYS TO BE CARRIED OUT FROM JULY AND SEPTEMBER ONLY.
- MINIMIZE THE EXTENT OF DISTURBED AREAS AND THE DURATION OF EXPOSURE.
- PROTECT DISTURBED AREAS FROM RUNOFF.
- PROVIDE TEMPORARY COVER SUCH AS SEEDING OR MULCHING IF DISTURBED AREA WILL NOT BE REHABILITATED SHORTLY.
- INSPECT STRAW BALE FLOW CHECK DAMS, SILT FENCES, SILT SACKS, AND CATCH BASIN SUMP REGULARLY AND AFTER EVERY MAJOR STORM EVENT. CLEAN AND REPAIR WHEN NECESSARY.
- PLAN TO BE REVIEWED AND REVISED AS REQUIRED DURING CONSTRUCTION.
- EROSION CONTROL FENCING TO BE ALSO INSTALLED AROUND THE BASE OF ALL STOCKPILES.
- DO NOT EXPOSE TOPSOIL PILES AND EXCAVATION MATERIAL CLOSER THAN 2.5m FROM ANY PAVED SURFACE, OR ONE WHICH IS TO BE PAVED BEFORE THE PILE IS REMOVED. ALL TOPSOIL PILES ARE TO BE SEEDED IF THEY ARE TO REMAIN ON SITE LONG ENOUGH FOR SEEDS TO GROW (LONGER THAN 30 DAYS). WHEN STORING SOIL ON SITE IN PILES THE CONTRACTOR MUST COVER EACH PILE WITH TARPS, STRAW OR A GEOTEXTILE FABRIC TO AVOID FINE PARTICLE TRANSPORT BY WIND AND/OR STREAMING RAIN WATER.
- CONTROL WIND-BLOWN DUST OFF SITE TO ACCEPTABLE LEVELS BY SEEDING TOPSOIL PILES AND OTHER AREAS TEMPORARILY (PROVIDE WATERING AS REQUIRED). FOR DUST CONTROL, CONTRACTOR TO APPLY CALCIUM CHLORIDE (TYPE I - OPSD 2501 AND CAN/CSSB-15-1) AND WATER WITH EQUIPMENT APPROVED BY THE OWNER'S REPRESENTATIVE AT RATE IN ACCORDANCE TO OPSD 508 WHEN DIRECTED BY OWNER'S REPRESENTATIVE.
- ALL EROSION CONTROL STRUCTURE TO REMAIN IN PLACE UNTIL ALL DISTURBED GROUND SURFACES HAVE BEEN DESTABILIZED EITHER BY PAVING OR RESTORATION OF VEGETATIVE GROUND COVER.
- SEEDING CAPTURE SILT SACKS MUST BE MAINTAINED AND CANNOT BE REMOVED UNTIL ALL LANDSCAPING AREAS ARE COMPLETED.
- NO ALTERNATE METHODS OF EROSION PROTECTION SHALL BE PERMITTED UNLESS APPROVES BY THIS CONSULTING ENGINEER AND THE TOWN DEPARTMENT OF PUBLIC WORKS.
- CONTRACTOR RESPONSIBLE FOR MUNICIPAL ROADWAY AND SIDEWALK TO BE CLEANED OF ALL SEDIMENT FROM VEHICULAR TRACKING ETC. AT THE END OF EACH WORK DAY.
- DURING WET CONDITIONS, TIRES OF ALL VEHICLES/EQUIPMENT

- LEAVING THE SITE ARE TO BE SCRAPPED.
 - ANY MUD/MATERIAL TRACKED ONTO THE ROAD SHALL BE REMOVED IMMEDIATELY BY HAND OR RUBBER TIRE LOADER.
 - TAKE ALL NECESSARY STEPS TO PREVENT BUILDING MATERIAL, CONSTRUCTION DEBRIS OR WASTE BEING SPILLED OR TRACKED ONTO ADJUTING PROPERTIES OR PUBLIC STREETS DURING CONSTRUCTION AND PROCEED IMMEDIATELY TO CLEAN UP ANY AREAS SO AFFECTED.
 - PROVIDE GRAVEL ENTRANCE WHEREVER EQUIPMENT LEAVES THE SITE TO PROVIDE MUD TRACKING ONTO PAVED SURFACES. GRAVEL BED SHALL BE A MINIMUM OF 10m LONG, 4m WIDE, AND 0.15m DEEP AND SHALL CONSIST OF COARSE MATERIAL. MAINTAIN GRAVEL ENTRANCE IN CLEAN CONDITION.
- 3. AFTER CONSTRUCTION:**
- PROVIDE PERMANENT COVER CONSISTING OF TOPSOIL AND SEED TO DISTURBED AREAS.
 - ALL SEDIMENT AND EROSION CONTROL MEASURES TO BE REMOVED BY THE CONTRACTOR FOLLOWING THE COMPLETION OF WORK AND AFTER DISTURBED AREAS HAVE BEEN REHABILITATED AND STABILIZED. THIS INCLUDES REMOVE STRAW BALE FLOW CHECK DAMS, SILT FENCES AND FILTER CLOTHS ON CATCH BASINS AND MANHOLE COVERS.
 - INSPECT AND CLEAN CATCH BASIN SUMPS AND STORM SEWERS.

zeidler
 600-158 Sterling Road
 Toronto, ON M6R 2B7
 T +1 416 596 8300
 ZEIDLER.COM

NEUF ARCHITECTS
 406-47 Clarence Street
 Ottawa, ON K1N 9K1
 T +1 613 234 2274
 NEUFARCHITECTES.COM

CF Cadillac Fairview

PARSONS

NOTE
 COPYRIGHT © ZEIDLER ARCHITECTURE INC.
 CONTRACTOR MUST CHECK AND VERIFY ALL DIMENSIONS ON THE JOB. ANY DISCREPANCY OR CONTRADICTORY INFORMATION WITHIN THIS SET OF DRAWINGS AND / OR OTHER CONSULTANTS' DRAWINGS MUST BE BROUGHT TO THE ATTENTION OF THE ARCHITECT BEFORE PROCEEDING.



NO.	ISSUE/REVISION	DATE
6	FINAL ISSUE TO SITE PLAN CONTROL	2023-04-10
5	FINAL ISSUE TO SITE PLAN CONTROL	2022-12-09
4	FINAL ISSUE TO SITE PLAN CONTROL	2022-10-14
3	FINAL ISSUE TO SITE PLAN CONTROL	2022-08-24
2	RE-ISSUED TO SITE PLAN CONTROL	2022-04-29
1	ISSUED TO SITE PLAN CONTROL	2021-10-29

NOT FOR CONSTRUCTION

**CF RIDEAU CENTRE
 REGISTRY SITE**

PROJECT ADDRESS
 70 NICOLAS ST.
 OTTAWA, ON

**SITE SERVICING, GRADING
 AND EROSION AND
 SEDIMENT CONTROL PLAN**

PROJECT NO.	DRAWN	CHECKED
477846	JN	SM
DRAWING NO.	REVISION NO.	
00718624		
SPA-C101	2	

April 11, 2023, 6:26:12 PM
 H:\510\477846\1000\DWG\5\477846 - 21.dwg