

- LEGEND**
- X — SILT FENCE (PER OPSD-219.110)
  - DECK DRAIN 1 432mmx432mm (WATTS) FD-490-F-4 T/G=63.70

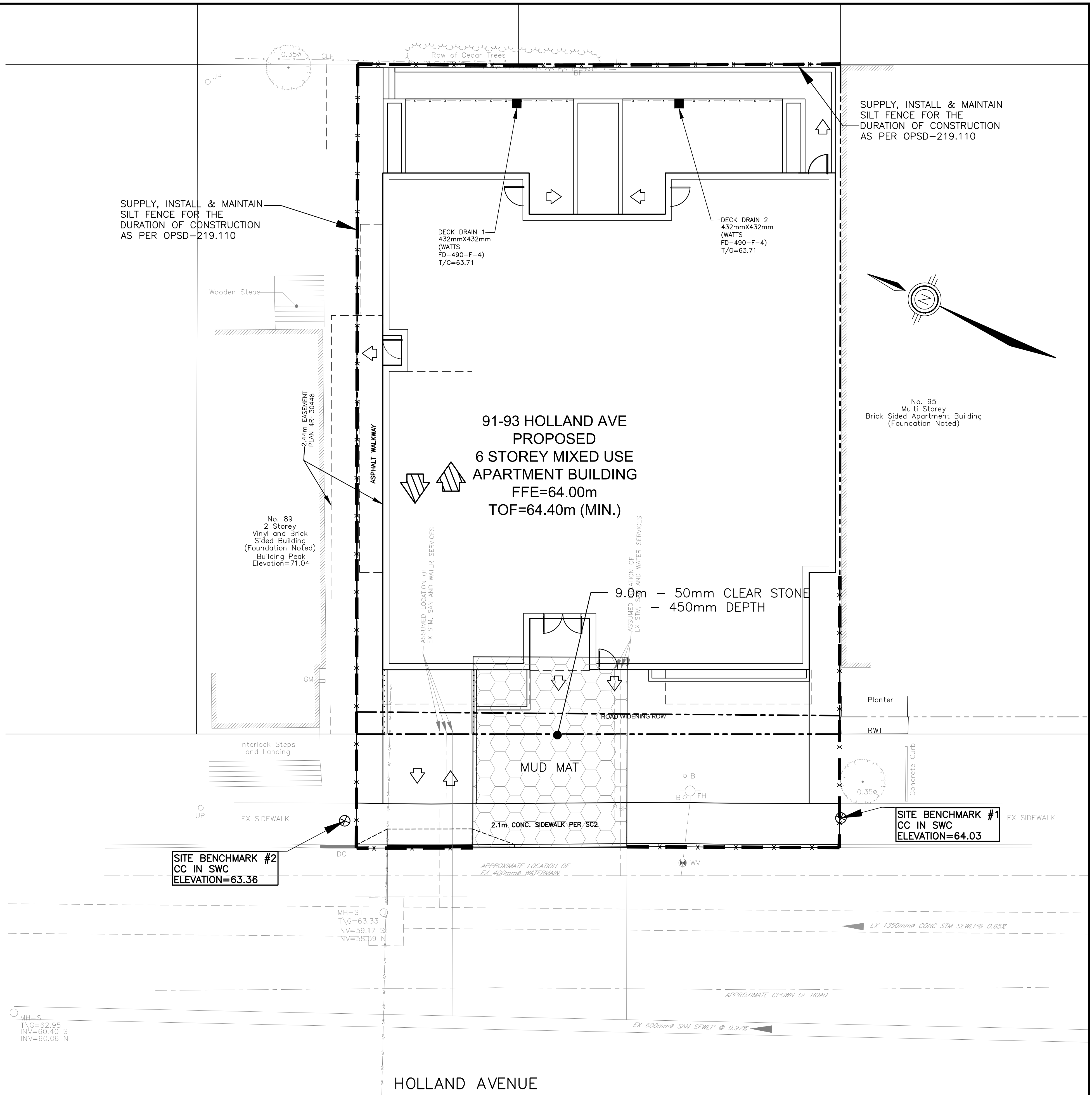
- EROSION AND SEDIMENT CONTROL NOTES:**
- THE SEDIMENT AND EROSION CONTROL MEASURES MAY BE MODIFIED IN THE FIELD AT THE DISCRETION OF THE CITY OF OTTAWA SITE INSPECTOR OR CONSERVATION AUTHORITY.
  - A MUD MAT IS TO BE INSTALLED AT EACH CONSTRUCTION ENTRANCE AND SHALL BE MAINTAINED UNTIL THE PLACEMENT OF THE GRANULAR SUB-BASE. MUD MAT SHALL BE CONSTRUCTED OF 100mm Ø CLEAR STONE, 400mm THICK. MUD MAT SHALL BE OF SUFFICIENT LENGTH TO ENSURE THAT A MINIMUM AMOUNT OF MATERIALS IS TRUCKED OFF SITE ONTO ADJACENT ROADS.
  - THE CONTRACTOR IS RESPONSIBLE FOR THE INSTALLATION AND CONSTRUCTION OF ALL SEDIMENT AND EROSION CONTROL MEASURES TO ENSURE THAT SEDIMENT DOES NOT MIGRATE FROM THE CONSTRUCTION SITE. SEDIMENTS SHALL BE CONTAINED AND DISPOSED OF IN A MANNER CONSISTENT WITH THE CITY OF OTTAWA SPECIFICATIONS. THE CONTRACTOR SHALL IMPLEMENT BEST MANAGEMENT PRACTICES, TO PROVIDE FOR PROTECTION OF THE AREA DRAINAGE SYSTEM AND THE RECEIVING WATERCOURSE, DURING CONSTRUCTION ACTIVITIES. THIS INCLUDES LIMITING THE AMOUNT OF EXPOSED SOIL, USING FILTER CLOTH UNDER THE GRATES OF CATCHBASINS AND MANHOLES AND INSTALLING SILT FENCES (PER OPSD 219.110) AND OTHER EFFECTIVE SEDIMENT TRAPS.

- MUD MAT NOTES**
- THE GRANULAR MATERIAL WILL REQUIRE PERIODIC REPLACEMENT AS IT BECOMES CONTAMINATED BY VEHICLE TRAFFIC.
  - SEDIMENT SHALL BE CLEANED FROM PUBLIC ROADS AT THE END OF EACH DAY.
  - SEDIMENT SHALL BE REMOVED FROM PUBLIC ROADS BY SHOVELING OR SWEEPING AND DISPOSED OF PROPERLY IN A CONTROLLED SEDIMENT DISPOSAL AREA.

*Andrew McCreight*

**ANDREW MCCREIGHT**  
MANAGER (A), DEVELOPMENT REVIEW CENTRAL  
PLANNING, REAL ESTATE & ECONOMIC DEVELOPMENT  
DEPARTMENT, CITY OF OTTAWA

**APPROVED**  
By Andrew McCreight at 10:20 am, Nov 30, 2022



Oct 13, 2022 I:\DRAWINGS\21007-1 91-93 Holland Ave\Design\005-21007-SC1.dwg

**CONTRACT DRAWINGS:**  
Contractor must verify all dimensions and be responsible for same. Any discrepancies must be reported to the Engineer before commencing work. Drawings are not to be copied, distributed or used by others without the express written consent of Ainley Graham & Associates Limited. Use of these drawings by any party for any other purpose is subject to the following caution.

**CAUTION:** The information contained in this drawing is solely for the intended recipient. Any copying, distribution or use by others without the express written consent of Ainley Graham & Associates Limited is prohibited. The recipient is responsible for confirming the accuracy and completeness of the information with the originator. The recipient assumes all risks and liabilities associated with the use of the drawings. The recipient will save and hold harmless Ainley Graham & Associates Limited for any claims whatsoever associated with or related to the use of the drawings. The recipient will not reuse any portion of the drawings for any future project without the express written permission of Ainley Graham & Associates Limited.

NO.	REVISIONS	DATE	INITIAL	NO.	REVISIONS	DATE	INITIAL
2	RE-ISSUED FOR SITE PLAN APPROVAL	APR 08/22	JX				
1	ISSUED FOR REVIEW/COORDINATION	MAR 18/22	JX				

Not Valid Unless Signed And Dated

**Professional Engineers  
Ontario**  
APRIL 08, 2022  
**Limited Licensee**  
Name: J.W.XU  
Number: 100171806  
Category: CIVIL see limitation  
Limitations:  
This license is subject to the limitations as detailed on the certificate.  
Association of Professional Engineers of Ontario

SCALE: 1 : 100  
DESIGN: JX  
DRAWN: MH  
CHECKED: GSC/JX  
DATE: MARCH 2021

**SIX-STOREY MIXED USE  
APARTMENT BUILDING  
91-93 HOLLAND AVENUE  
CITY OF OTTAWA**

**EROSION AND SEDIMENT CONTROL PLAN**

**Ainley GROUP**

2724 Fenton Road  
Ottawa, Ontario  
K1T 3T7  
Telephone: (613) 822-1052  
Fax: (613) 822-1573

CONTRACT No. 21007 005-21007-SC1