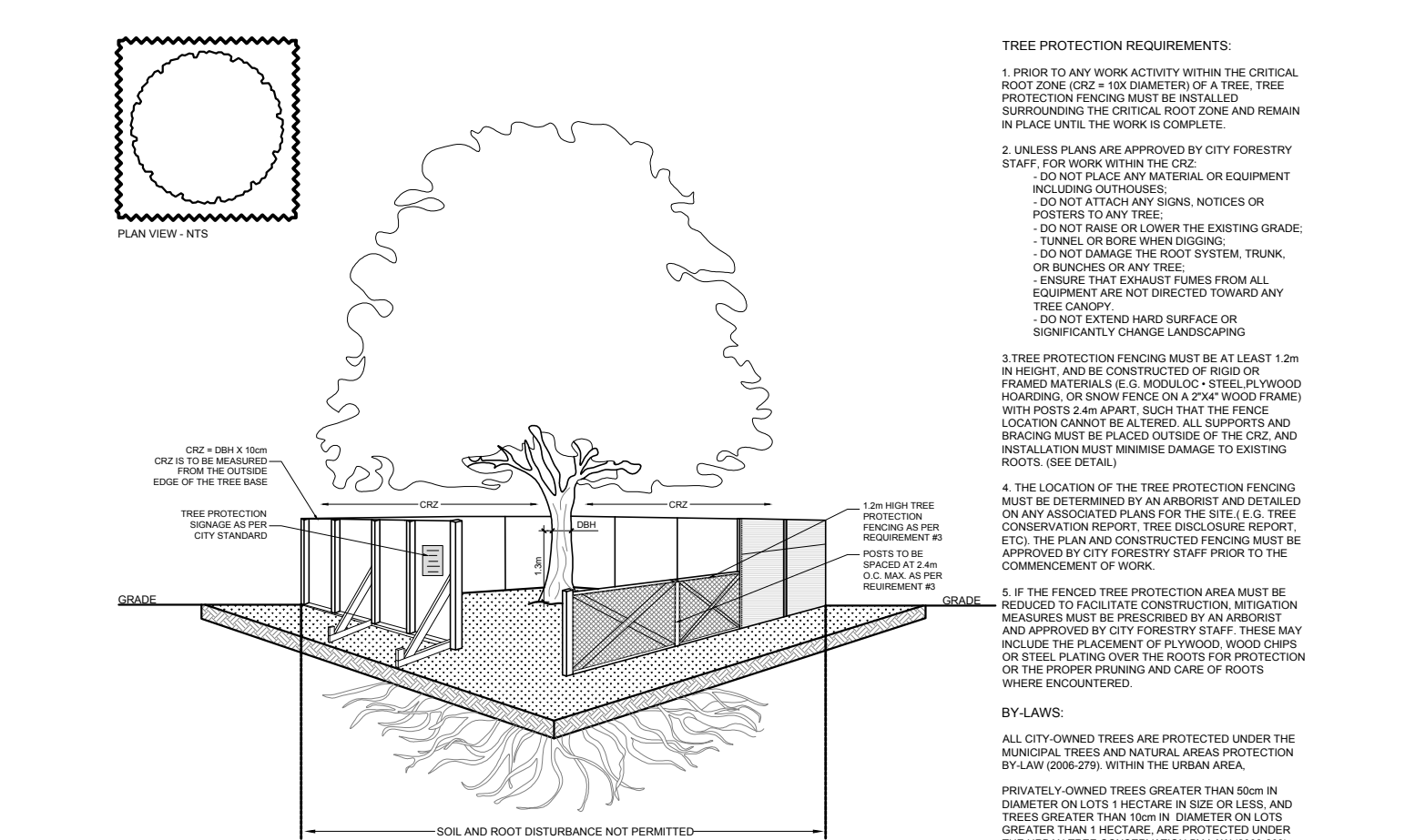


EXISTING TREE LIST						
KEY	QTY	BOTANICAL NAME	COMMON NAME	SIZE	CONDITION	REMARKS
TREES						
AP	1	<i>Acer platanoides</i>	Norway Maple	170-600mm dbh	Good	To remain 17 Sweetland Avenue
NM	1	<i>Acer platanoides</i>	Norway Maple	170mm dbh	Poor	To be removed City of Ottawa
QR	1	<i>Quercus rubra</i>	Red Oak	420mm dbh	Good	To remain
TO	H	<i>Thuja occidentalis</i>	Eastern White Cedar	100-300mm dbh	Dead-good	To remain 17 Sweetland Avenue
UP	3	<i>Ulmus pumila</i>	Siberian Elm	300-590mm dbh	Good	To remain

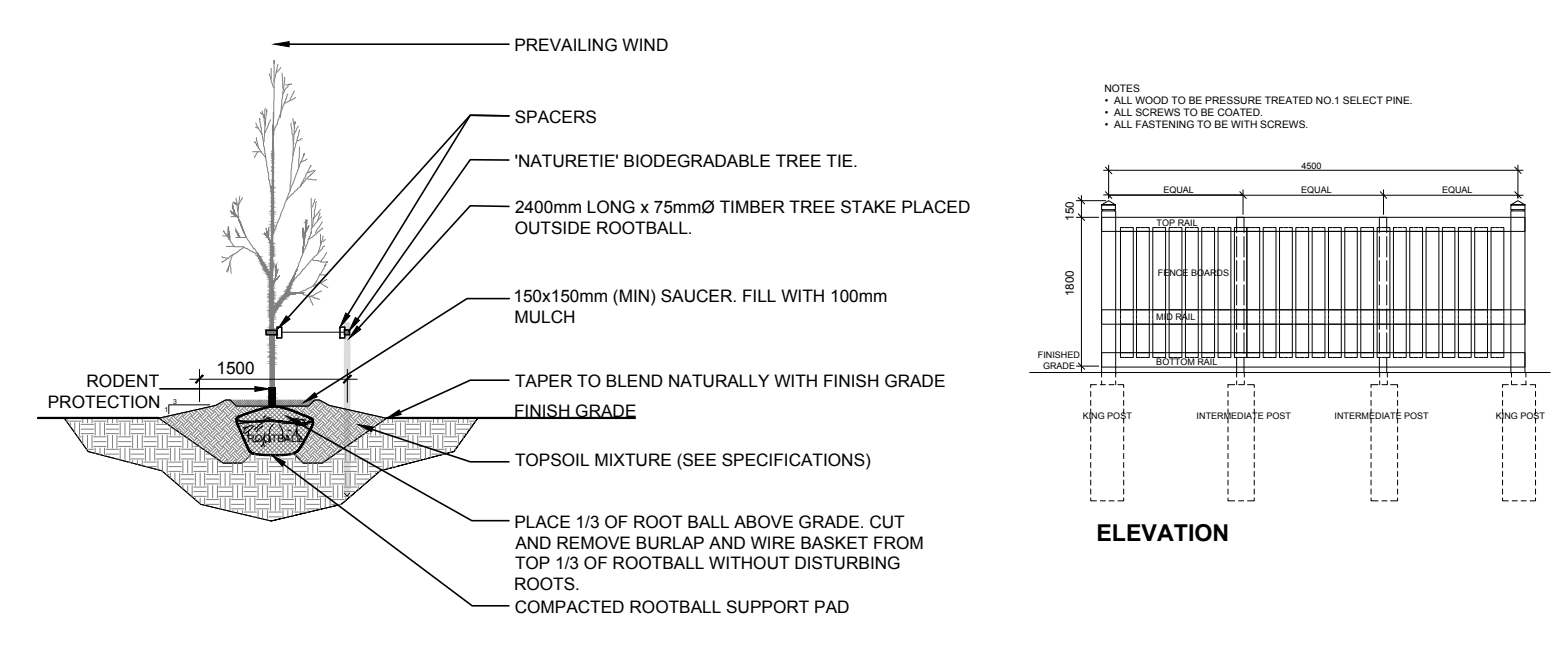
PROPOSED PLANT LIST						
KEY	QTY	BOTANICAL NAME	COMMON NAME	SIZE	CONDITION	Remarks
DECIDUOUS TREES						
HB	1	<i>Celtis occidentalis</i>	Hackberry	60mm cal.	B&B	
SM	1	<i>Acer saccharum</i>	Sugar Maple	60mm cal.	B&B	
SHRUBS						
AH	8	<i>Hydrangea arborescens 'Annabelle'</i>	Annabelle Hydrangea	1 gallon pot	Potted	Space 1000mm o.c.
PERENNIALS						
RS	6	<i>Hemerocallis 'Ruby Stella'</i>	Ruby Stella Daylily	100mm pot	Potted	Space 400mm o.c.

GENERAL NOTES:

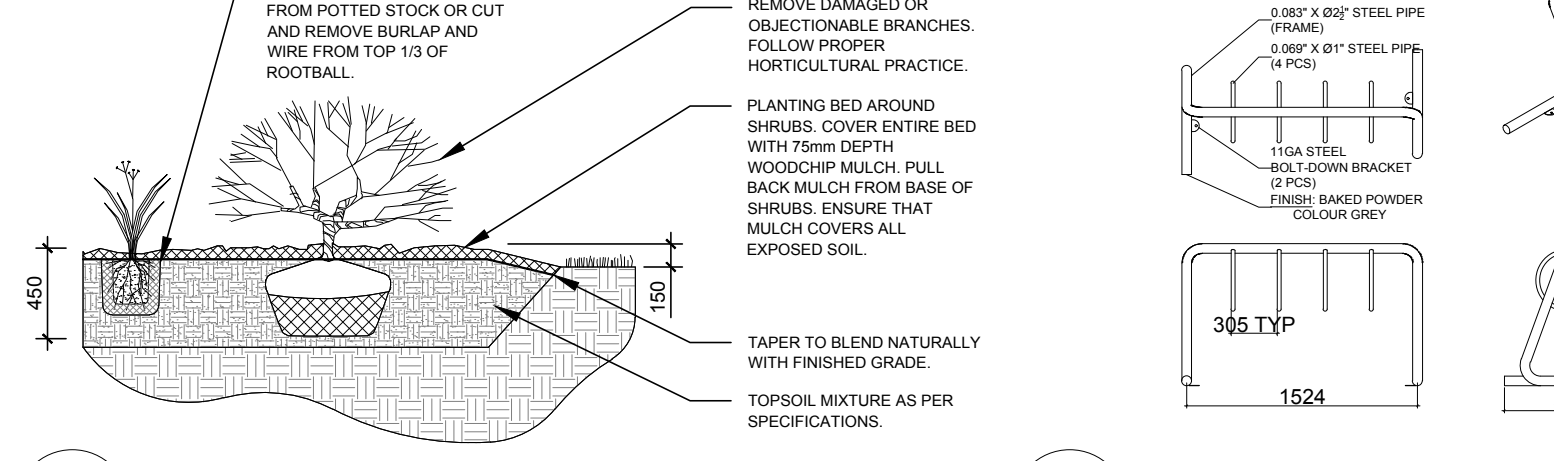
- It is the responsibility of the appropriate contractor or official to report any errors, omissions or discrepancies on this plan with actual site conditions to the Landscape Architect before proceeding with construction.
- The contractor is to notify all utility companies and authorities prior to any excavation and ascertain locations of underground services.
- The contractor is to reinstate all areas and items damaged as a result of construction activity.
- The contractor is to comply with all pertinent codes and by-laws.
- The contractor is to maintain a positive surface run-off throughout the entire construction period.
- The Landscape Architect is not responsible for subsurface conditions.
- The contractor is to identify all existing trees to remain on site with the Landscape Architect prior to construction.
- The contractor is to stake the proposed location of all plant material in conjunction with the Landscape Architect prior to excavation.
- Minimum distances for selected deciduous trees are as follows:
 - Building Foundations 7.5m
 - Sidewalks 1.5m
 - Public Streets 2.5m
 - Underground Infrastructure 2.0m
- All trees within 1m of underground utility trenches are to be excavated by hand.
- Remove all protective wrapping from tree trunks after installation.
- Staking of trees shall only be performed if necessary.
- Ensure that mulch is pulled back a min. distance of 75mm from base of tree trunk.



2 TREE PROTECTION FENCE
SCALE: NTS

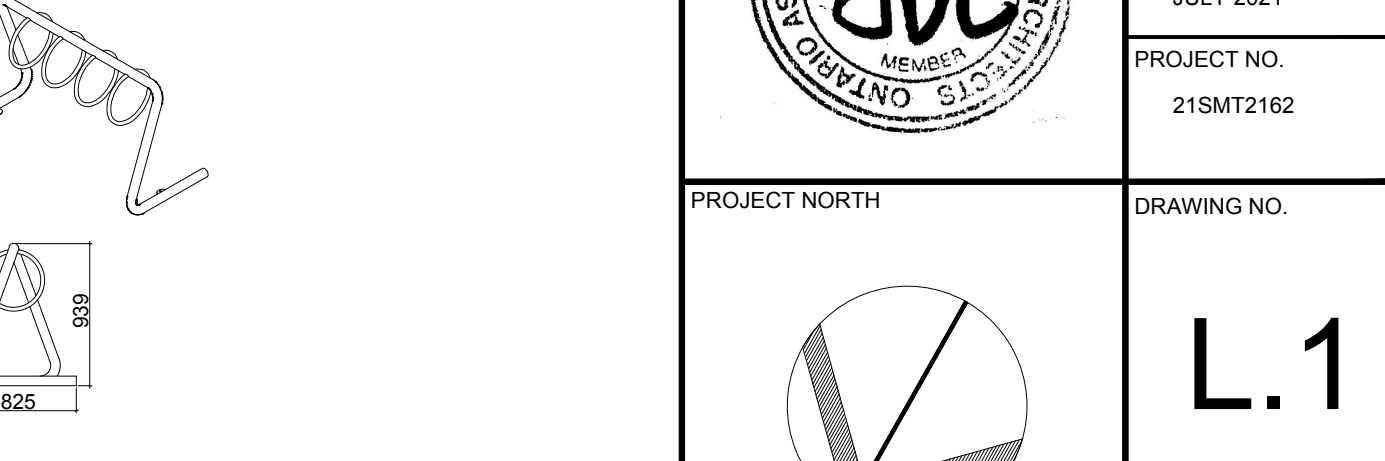


3 DECIDUOUS TREE PLANTING
SCALE: NTS



4 SHRUB / PERENNIAL PLANTING
SCALE: NTS

5 1.8m Ht. WOOD SCREEN FENCE
SCALE: NTS



6 FOUR (4) RING BIKE RACK
SCALE: NTS

CLIENT

SMART LIVING PROPERTIES

CONSULTANTS

ARCHITECTS: OTTAWA CARLETON CONSTRUCTION

CIVIL ENGINEERS: J.L. Richards & Associates Limited ENGINEERS • ARCHITECTS • PLANNERS

LEGEND

- EXISTING TREE TO REMAIN
- GROUP OF EXISTING TREES TO REMAIN
- EXISTING TREE TO BE REMOVED
- PROPOSED DECIDUOUS TREE
- PROPOSED SHRUBS / PERENNIALS
- PROPOSED SOD
- PROPOSED RIVERSTONE MULCH
- PROPOSED CONCRETE
- PROPOSED PRECAST CONCRETE PAVERS
- PROPOSED TREE PROTECTION FENCE
- PROPOSED 1.8m HL WOOD SCREEN FENCE
- PROPOSED LIGHT STANDARDS (REFER TO SITE PLAN FOR DETAILS)

2	REVISED PER CITY COMMENTS	11/17/2021	ML	JL
1	ISSUED FOR SITE PLAN CONTROL	07/29/2021	ML	JL

JAMES B. LENOX & ASSOCIATES INC.
LANDSCAPE ARCHITECTS
3332 CARLING AVE. OTTAWA, ONTARIO K2H 5A8
Tel. (613) 722-5168 Fax. (1866) 343-3942

PROJECT
NEW ADDITION TO EXISTING 6 STOREY BUILDING
280 LAURIER AVENUE EAST, OTTAWA ON

DRAWING
TREE CONSERVATION REPORT & LANDSCAPE PLAN

STAMP

AS SHOWN

START DATE
JULY 2021

PROJECT NO.
21SMT2162

PROJECT NORTH

DRAWING NO.
L.1

PLOT SIZE ARCH-D

1 TREE CONSERVATION REPORT & LANDSCAPE PLAN
SCALE: 1:100