

Client

DATE	REVISION	REF
2021-04-16	ISSUED FOR CITY COMMENTS	5
2020-11-20	RE-ISSUED FOR SITE PLAN	4
2020-08-04	ISSUED FOR SITE PLAN APPROVAL	3
2020-07-23	RE-ISSUED FOR HYDRO ONE COORDINATION	2
2020-05-07	ISSUED FOR HYDRO ONE COORDINATION	1

THE ENGINEER MAKES ANY AND ALL RESPONSIBILITY AND LIABILITY FOR PROBLEMS WHICH ARISE FROM FAILURE TO FOLLOW THESE PLANS, SPECIFICATIONS AND THE DESIGN INTENT BY THE CONTRACTOR OR FOR PROBLEMS WHICH ARISE FROM OTHER FAILURE TO OBTAIN AND / OR FOLLOW THE ENGINEER'S GUIDANCE WITH RESPECT TO ANY EXISTING, UNDISCOVERED, UNCONSIDERED, UNUSUAL OR UNUSUAL CONDITIONS WHICH ARE ALLEGED.

THIS DRAWING IS THE PROPERTY OF GOODKEY WEEDMARK & ASSOCIATES LIMITED AND ALL COPYRIGHTS ARE RESERVED. NO USE OF THIS DRAWING MAY BE MADE WITHOUT EXPRESS WRITTEN CONSENT.

DO NOT SCALE DRAWINGS.

L'INGÉNIEUR DÉCLINE TOUTE RESPONSABILITÉ DÉCOULANT DE PROBLÈMES FAISANT SUITE AU NON RESPECT DES PLANS, DES ESQUISSES ET DE L'INTENTION DU CONCEPT QU'ILS INVOQUENT OU DE TOUTES LES PROBLÈMES PROVENANT DES DÉFAUTS DE RÉALISATION ET / OU DE SUivre LES CONSEILS DE L'INGÉNIEUR EN CE QUI CONCERNE LES ÉPREUVES, LES MODIFICATIONS, LES MODIFICATIONS OU LES CONDITIONS ALLEGUÉES.

CE DESSIN EST LA PROPRIÉTÉ LITTÉRAIRE DE GOODKEY WEEDMARK & ASSOCIATES LIMITED ET TOUTS LES DROITS SONT RÉSERVÉS. L'UTILISATION EST INTERDITE SANS LE CONSENTEMENT ÉCRIT DE L'AUTEUR.

NE PAS MESURER LES DESSINS À L'ÉCHELLE.

Goodkey Weedmark Consulting Engineers

GOODKEY WEEDMARK & ASSOCIATES LIMITED
 1688 Woodward Dr. 613 727-5111 Voice
 Ottawa Ontario 613 227-5115 Fax
 Canada K2C 3R8 www.gwe.com Web

Project north
 Nord du projet

Scale/Échelle
 AS NOTED
 2020-164

Design by
 H.ROMANI

Drawn by
 LALI

Checked by
 D.VYAS

Date
 April 21

Revision no.
 —

Acad file/Échelle
 —

PROFESSIONAL ENGINEER
 D. VYAS
 189133120
 APRIL 16 2021
 PROVINCE OF ONTARIO

Project/Projet
LE GROUPE MAURICE CENTRUM RETIREMENT

211 CENTRUM BLVD, OTTAWA, ONTARIO

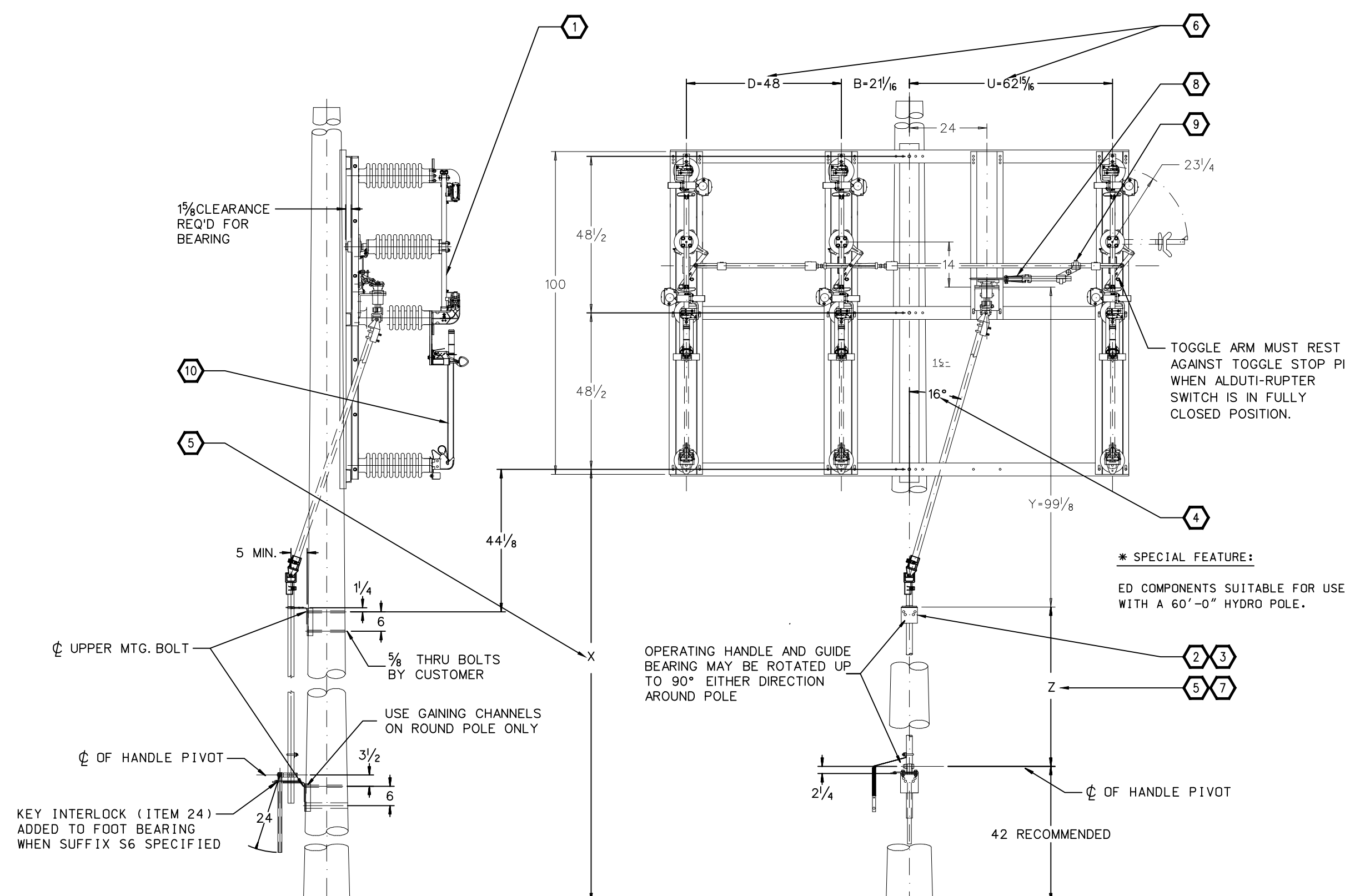
Drawing title/Titre du dessin
ELECTRICAL SITE PLAN

Scale/Echelle	AS NOTED	Project no./No. du projet	2020-164
Design by	H.ROMANI	Drawn by	LALI
Drawn by	LALI	Checked by	D.VYAS
Date	April 21	Revision no.	—

1 ELECTRICAL LAYOUT- SITE PLAN
 E3 N.T.S.

D07-12-20-0165

#18310

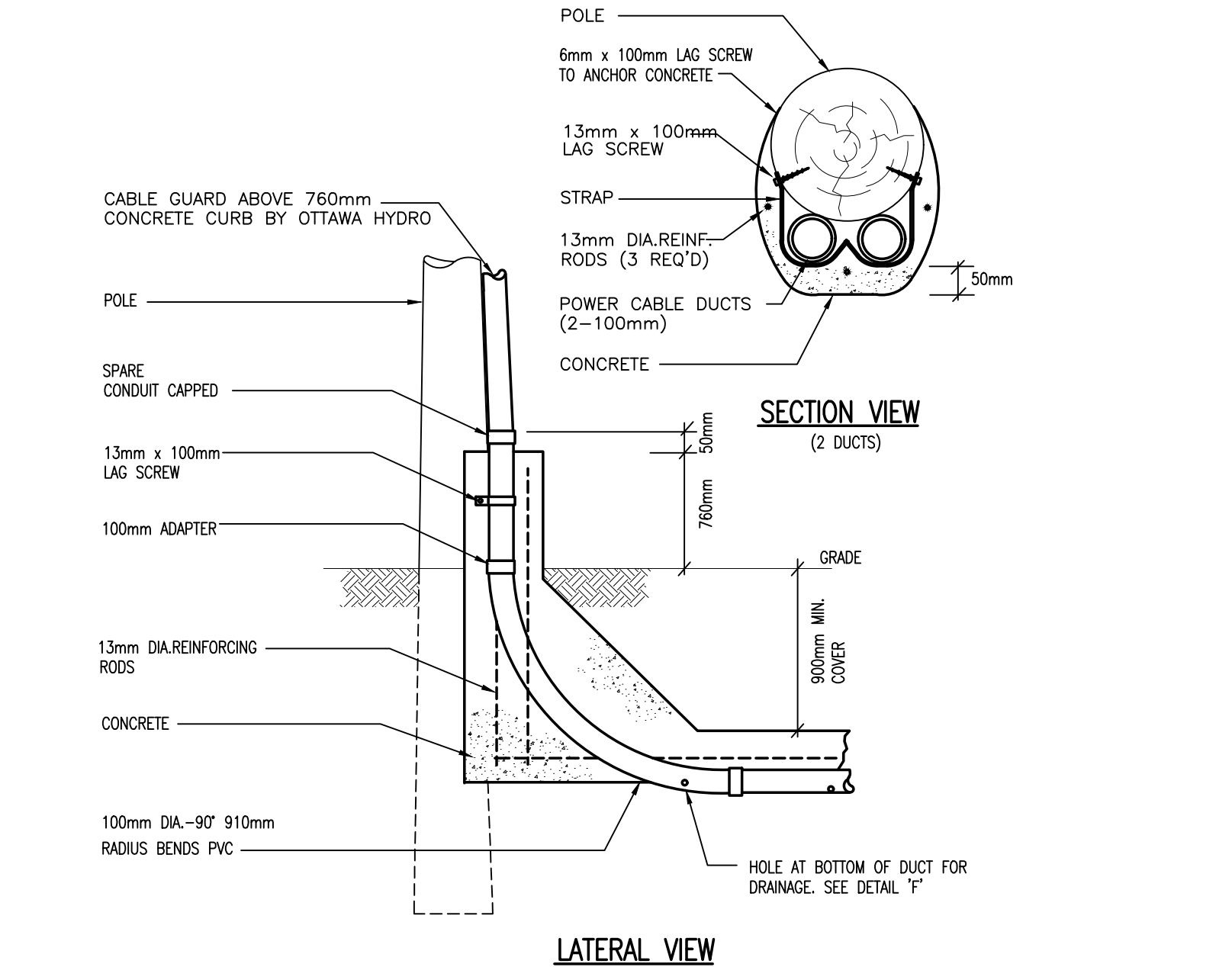


ST'D. M.T.G. ARRANGEMENT - SAC ALDUTI-RUPTUR SWITCH, OUTDOOR DISTR. - DOUBLE BREAK-VERTICAL ON SINGLE POLE WITH ROTATING TYPE OPERATING MECHANISM ON BACK SIDE OF POLE.

- NOTES:**
- ALL MOUNTING HOLES 1/4" DIA. UNLESS OTHERWISE SPECIFIED.
 - IF THE VERTICAL SHAFT EXCEEDS THREE 10'-4" PIPE SECTIONS OR 31'-0", 2 INCH PIPES AND FITTINGS ARE NECESSARY.
 - DISTRIBUTE GUIDE BEARINGS EQUALLY TO MINIMIZE OFFSET OF UPPER PIPE SECTION.
 - THE UNIVERSAL COUPLINGS WILL ACCOMMODATE VERTICAL SHAFT SLOPE IN UPPER MOST PIPE SECTION FROM 0° TO 20° MAX.
 - PIPE CUTTING LENGTHS ARE DETERMINED FROM B.D.U. AND X 1/2, 2, 2 1/2, WHEN PIPE IS TO BE FACTORY CUT, THESE DIMENSIONS MUST BE SUPPLIED WITH ORDER.
 - TWO 10'-4" LENGTHS OF 1" GALV. I.P.S. (ITEM 21) AND ONE 5'-0" LENGTH (ITEM 14) ARE PROVIDED. WHEN FIELD CUT, LENGTHS ARE AS FOLLOWS:
ITEM 14 = U MINUS 35/4"
ITEM 21 = U + B MINUS 17"
ITEM 21 = D MINUS 17"
 - FIVE 2" I.P.S. PIPE x 10'-4" LONG ARE PROVIDED. ITEM 19G (1 PIECE) PRE DRILLED PER DETAIL D ITEM 20 (4 PIECES) WHEN FIELD CUT, LENGTHS ARE AS FOLLOWS:
ITEM 19G = Z PLUS 17"
ITEM 20 = Y SITE MEASURED ITEM 20 = Z1 PLUS 1"
 - WHEN FINALLY ADJUSTED, THE ALDUTI-RUPTUR SWITCH POLES ARE TO BE FULLY CLOSED, AND THE OUTBOARD BEARING LEVER IS TO BE IN TOGGLE APPROX 1/2" TO 2".
 - GROUND STRAP AND BURNDY GROUND CONNECTOR INCLUDED WITH HANDLE ASSEMBLY, (ITEM 19A).
 - S&C 27.6KV SMD-2C TYPE POWER FUSES, RATED 20E STANDARD SPEED FUSES, FULL LOAD IS 13 AMPS. PROVIDE 20 AMP PRIMARY FUSE TO AND ENSURE THAT THE PRIMARY FUSE WILL ALLOW THE LV MAIN BREAKER TO MANAGE OVERLOADS.

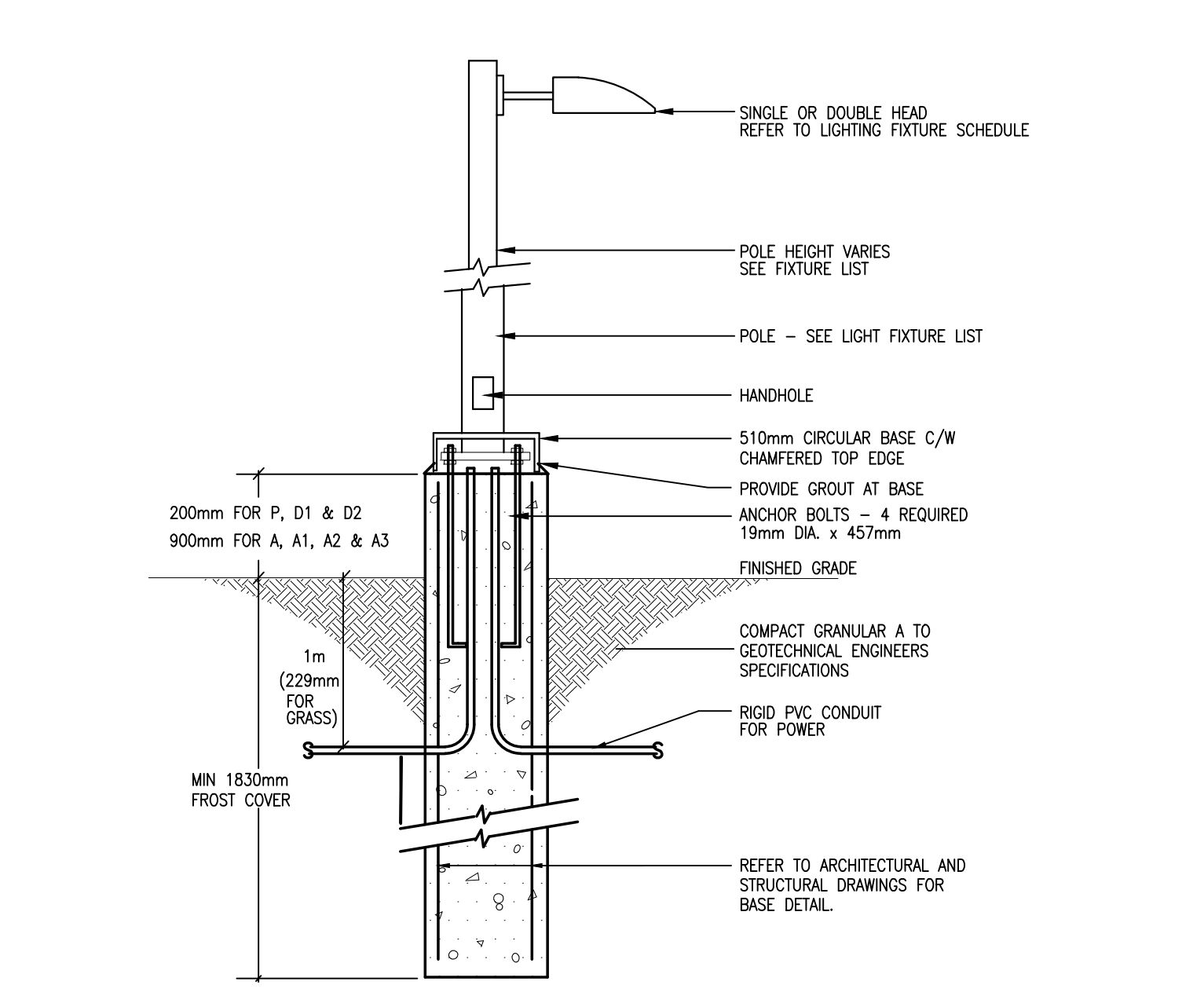
OVERHEAD POLE WITH CROSS-ARMS GROUND RODS 200A SWITCH DETAIL

6 E4 N.T.S.



INCOMING HYDRO POLE CONDUIT DETAILS

1 E4 N.T.S.

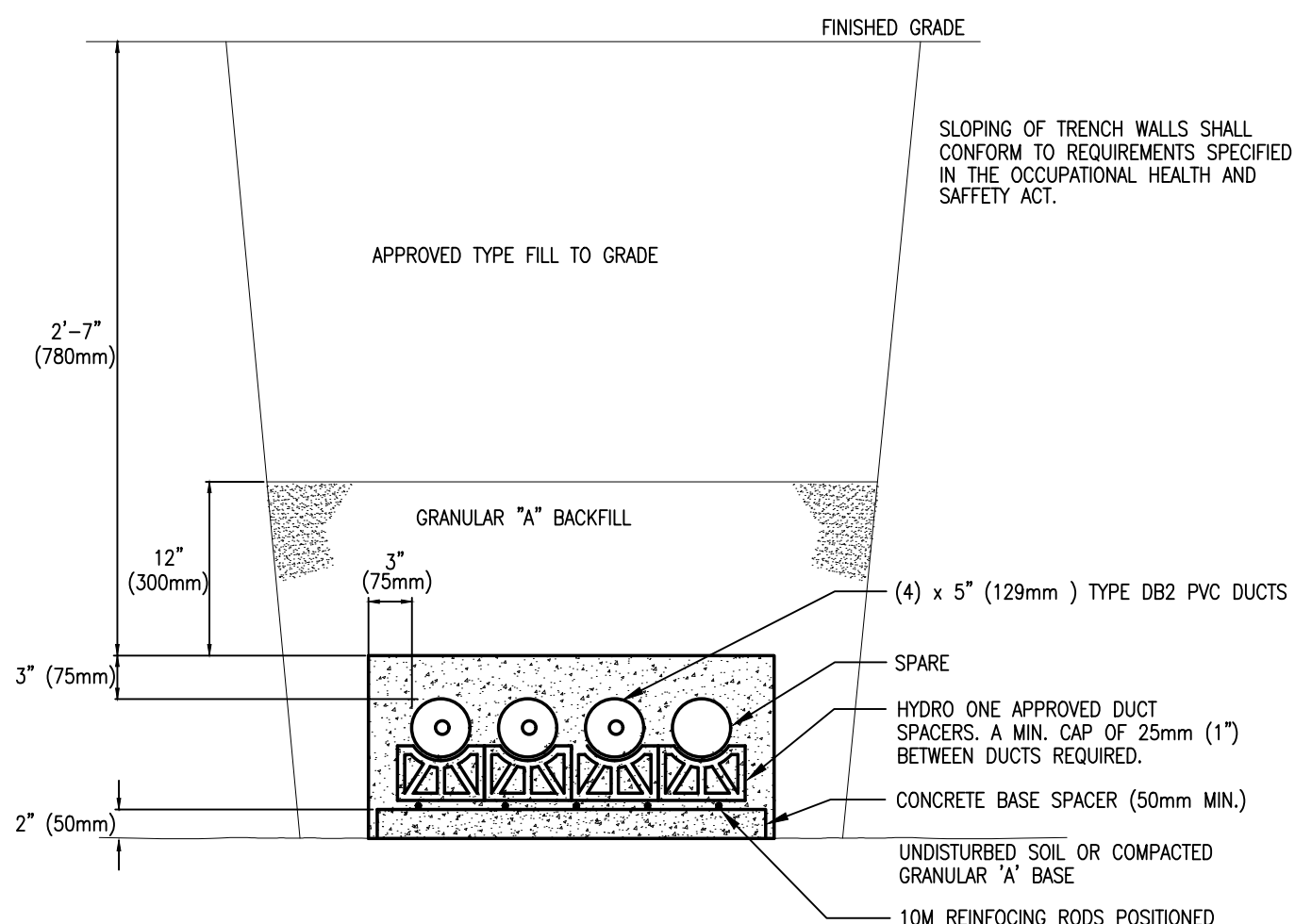


TYPICAL BASE DETAIL FOR EXTERIOR LIGHT STANDARD

2 E4 N.T.S.

4-CELL PRIMARY CONCRETE DUCTBANK

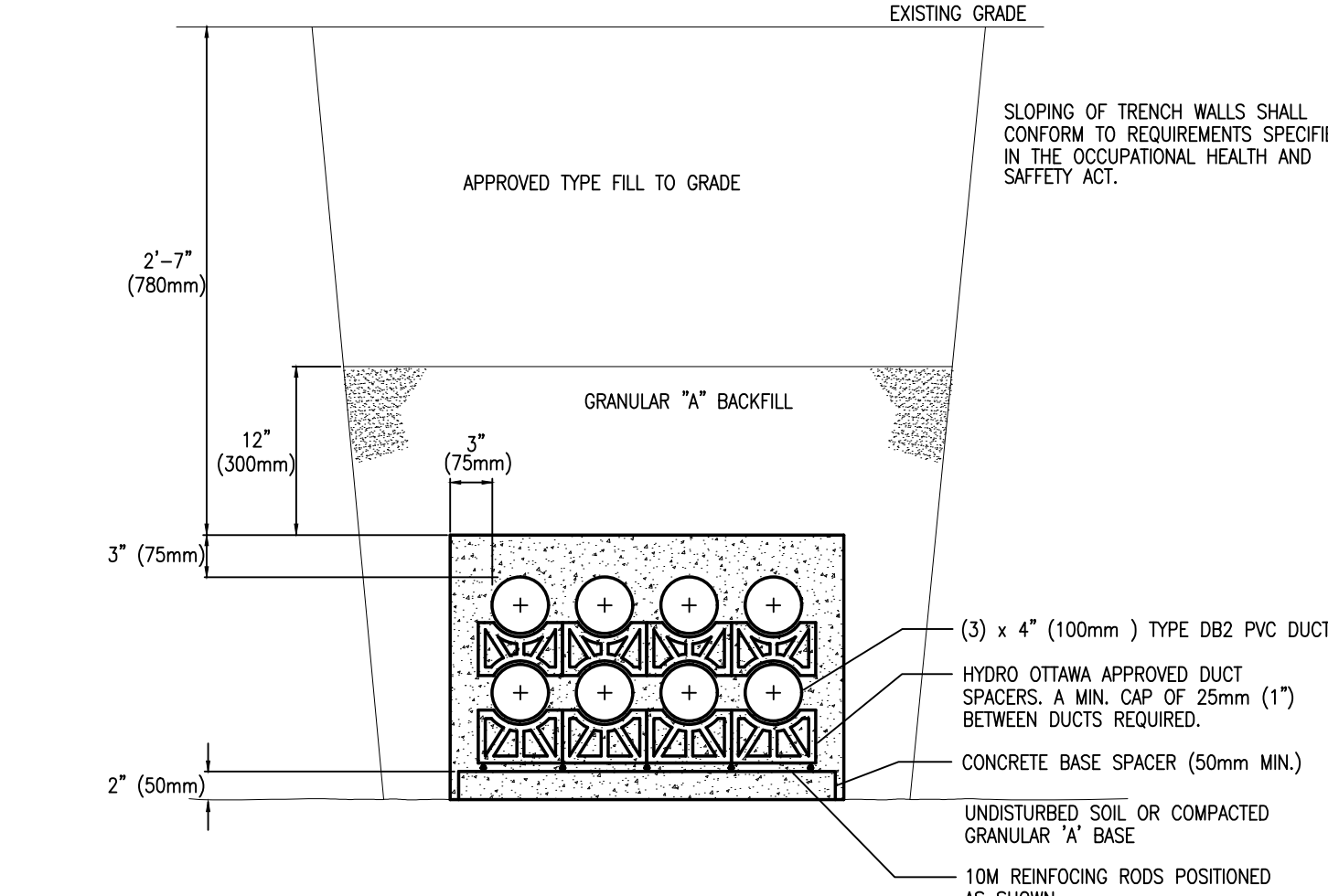
4 E4 N.T.S.



- NOTES:**
- CSA C222 No. 211.1 APPLIES TO ALL PVC DUCTING.
 - ONLY MATERIAL APPROVED BY HYDRO ONE TO BE USED.
 - DUCT JOINTS TO BE GLED USING AN APPROVED "PVC" SOLVENT, WHEN APPLICABLE.
 - REINFORCING RODS FULL LENGTH OF CONCRETE ENCASED DUCTS, OVERLAP JOINTS AND TIE AT BOTH ENDS DRILL AND BOWIE RODS TO CONCRETE STRUCTURE.
 - DUCT SPACERS TO BE PLACED AT A MAXIMUM OF 1500mm AND WITHIN 150mm OF COUPLING. PLASTIC DUCT SPACERS TO BE USED ONLY IF CONCRETE DUCT SPACERS ARE UNAVAILABLE.
 - FORMS REQUIRED FOR FULL LENGTH OF CONCRETE ENCASED DUCT STRUCTURE.
 - DUCTS AND TRENCHES MUST BE INSPECTED BY HYDRO ONE BEFORE ANY CONCRETE IS POURED.
 - ALL UNDERGROUND UTILITIES MUST BE CONTACTED AND ALL NECESSARY PERMITS MUST BE OBTAINED BY OWNER OR CONTRACTOR.
 - CONTRACTOR MUST ENSURE THAT ALL DUCTS ARE CLEANED, RODED AND THAT A 6mm (1/4") POLYPROPYLENE ROPE IS LEFT IN EACH DUCT.

8-CELL CONCRETE DUCTBANK (SECONDARY)

3 E4 N.T.S.



- NOTES:**
- CSA C222 No. 211.1 APPLIES TO ALL PVC DUCTING.
 - ONLY MATERIAL APPROVED BY HYDRO OTTAWA TO BE USED.
 - DUCT JOINTS TO BE GLED USING AN APPROVED "PVC" SOLVENT, WHEN APPLICABLE.
 - REINFORCING RODS FULL LENGTH OF CONCRETE ENCASED DUCTS, OVERLAP JOINTS AND TIE AT BOTH ENDS DRILL AND BOWIE RODS TO CONCRETE STRUCTURE.
 - DUCT SPACERS TO BE PLACED AT A MAXIMUM OF 1500mm AND WITHIN 150mm OF COUPLING. PLASTIC DUCT SPACERS TO BE USED ONLY IF CONCRETE DUCT SPACERS ARE UNAVAILABLE.
 - FORMS REQUIRED FOR FULL LENGTH OF CONCRETE ENCASED DUCT STRUCTURE.
 - DUCTS AND TRENCHES MUST BE INSPECTED BY HYDRO OTTAWA BEFORE ANY CONCRETE IS POURED.
 - ALL UNDERGROUND UTILITIES MUST BE CONTACTED AND ALL NECESSARY PERMITS MUST BE OBTAINED BY OWNER OR CONTRACTOR.
 - CONTRACTOR MUST ENSURE THAT ALL DUCTS ARE CLEANED, RODED AND THAT A 6mm (1/4") POLYPROPYLENE ROPE IS LEFT IN EACH DUCT.

- GENERAL NOTES:**
- COORDINATE BURIED SERVICES WITH ALL OTHER SERVICES (WATER, SEWER, GAS, HYDRO, TELEPHONE, CABLE, ETC.) REFER TO RELATED SITE SERVICES DRAWINGS.
 - COORDINATE WITH UTILITY AND TELEPHONE/CATV SERVICES FOR LOCATION AND FINAL CONDUIT REQUIREMENTS.
 - COORDINATE LOCATION OF LIGHTING FIXTURES WITH LANDSCAPE PLANS.
 - EXCAVATION, BACKFILL AND CONCRETE REINFORCING ASSOCIATED WITH ELECTRICAL WORK TO BE BY GENERAL CONTRACTOR.
 - USE PVC FOR UNDERGROUND ONLY. CHANGE TO EMT INSIDE BUILDING.
 - PROVIDE PVC/EMT TRANSITION ADAPTERS AT EXTERIOR TO INTERIOR CONDUITS.

LIGHTING FIXTURE SCHEDULE						
TYPE	DESCRIPTION	QTY	LAMPS PER FIXTURE	VOLT	MOUNTING	REMARKS
1	EXTERIOR WALL SCONCE WIDE2 LED P4 - PERFORMANCE PACKAGE, 8000RL VISUAL COMFORT FORWARD OPTIC.	35	3500K	347	RECESSED	
2	EXTERIOR DOWN LIGHT 4IN LDN - 3500K, 4000LM, CLEAR, SPECULAR REFLECTOR, 80 CRI	45	3500K	347	RECESSED	
3	EXTERIOR BOLLARD LIGHT PROTECTION GLASS IP65	17	3500K	347	BOLLARD	
4	EXTERIOR WALL DOWN DIRECT	17	3500K	347	WALL	
5	EXTERIOR POLE LIGHT RAGEAN POST -TOP WITH P3 3500K PATHWAY DISTRIBUTION WITH HOUSE-SIDE SHIELD	53.6	3500K	347	POLE	
6	EXTERIOR POLE LIGHT RAGEAN POST -TOP WITH P3 3500K SYMMETRIC DISTRIBUTION	53.6	3500K	347	POLE	
7	EXTERIOR WALL LIGHT RSX AREA FIXTURE SIZE 2 P3 LUMEN PACKAGE 3500K CCT TYPE P4 DISTRIBUTION	150	3500K	347	WALL	
9	EXTERIOR WALL LIGHT RAGEAN ARM MOUNT WITH P2 3500K ASYMMETRIC DISTRIBUTION	38	3500K	347	WALL	
10/15	EXTERIOR POLE LIGHT RAGEAN POST -TOP WITH P1 3500K PATHWAY DISTRIBUTION WITH HOUSE-SIDE SHIELD	25.4	3500K	347	POLE	
11	EXTERIOR WALL SCONCE WIDE2 LED WITH P1 - PERFORMANCE PACKAGE, 8000RL VISUAL COMFORT FORWARD OPTIC.	10	3500K	347	WALL	
12	EXTERIOR WALL LIGHT RSX AREA LUMINAIRE SIZE 1 P4 LUMEN PACKAGE 3500K CCT TYPE P2 DISTRIBUTION	133.1	3500K	347	WALL	
13	EXTERIOR WALL SCONCE WIDE2 LED WITH P5 - PERFORMANCE PACKAGE, 8000RL VISUAL COMFORT FORWARD OPTIC.	48.4	3500K	347	WALL	
14	EXTERIOR WALL SCONCE WIDE2 LED WITH P5 - PERFORMANCE PACKAGE, 8000RL VISUAL COMFORT FORWARD OPTIC.	48.4	3500K	347	WALL	
16	RECESSED WALL LUMINAIRE, ASYMMETRICAL FORWARD THROW DISTRIBUTION, PSEB ANODIZED ALUMINUM REFLECTOR	11	3500K	347	WALL	

DRAWING LEGEND	
SYMBOL	DESCRIPTION
○	POLE MOUNTED LIGHT FIXTURE - TYPE AS SHOWN
○	WALL SCONCE/DOWN LIGHT FIXTURE - TYPE AS SHOWN
○	BOLLARD LIGHT - TYPE AS SHOWN
○	RECESSED LINEAR LIGHT FIXTURE - TYPE AS SHOWN
○	CEILING MOUNTED LIGHT FIXTURE - TYPE AS SHOWN

Client

DATE	REVISION	REF
2021-04-16	ISSUED FOR CITY COMMENTS	5
2020-11-20	RE-ISSUED FOR SITE PLAN	4
2020-08-04	ISSUED FOR SITE PLAN APPROVAL	3
2020-07-23	RE-ISSUED FOR HYDRO ONE COORDINATION	2
2020-05-07	ISSUED FOR HYDRO ONE COORDINATION	1

THE ENGINEER MAKES ANY AND ALL RESPONSIBILITY AND LIABILITY FOR PROBLEMS WHICH ARISE FROM FAILURE TO FOLLOW THESE PLANS, SPECIFICATIONS AND THE DESIGN WITHIN THEIR COMPANY OR FOR PROBLEMS WHICH ARISE FROM OTHER FAILURE TO OBTAIN AND / OR FOLLOW THE ENGINEER'S GUIDANCE WITH RESPECT TO ANY CONCRETE, BRICKWORK, ROOFING, MECHANICAL, ELECTRICAL OR CONDUITS WHICH ARE ALLOTTED.

THIS DRAWING IS THE PROPERTY OF GOODKEY WEEDMARK & ASSOCIATES LIMITED AND ALL COPYRIGHTS ARE RESERVED. NO USE OF THIS DRAWING MAY BE MADE WITHOUT EXPRESS WRITTEN CONSENT.

DO NOT SCALE DRAWINGS

L'INGÉNIEUR DÉCLINE TOUTE RESPONSABILITÉ DÉCOULANT DE PROBLÈMES FAISANT SUITE AU NON RESPECT DES PLANS, DES ESQUISSES ET DE LA LÉGENDE OU DES SPÉCIFICATIONS ET/OU DE TOUTES LES PROBLÈMES PROVENANT DES TRAVAUX D'INSTALLATION ET/OU DE SUivre LES CONSEILS DE L'INGÉNIEUR EN CE QUI CONCERNE LES BRICKS, ENDROITS, TOITURES, MÉCANIQUES, ÉLECTRIQUES OU CONDUITS ALLOUÉS.

CE DESSIN EST LA PROPRIÉTÉ D'INGÉNIEUR WEEDMARK & ASSOCIATES LIMITED ET TOUS LES DROITS SONT RÉSERVÉS. L'UTILISATION EST INTERDITE SANS LE CONSENTEMENT ÉCRIT DE L'AUTEUR.

NE PAS MESURER LES DESSINS À L'ÉCHELLE

Goodkey Weedmark Consulting Engineers

GOODKEY WEEDMARK & ASSOCIATES LIMITED
1688 Woodward Dr. 613 727-5111 Voice
Ottawa Ontario 613 727-5115 Fax
Canada K2C 3R8 www.gweil.com Web

Project name: Nord du projet

Scale/Échelle: AS NOTED

Project no./No. du projet: 2020-164

Design by: H.ROMANI

Drawn by: L.LALU

Checked by: D.VYAS

Date: April 21

Revision no.: —

Acad file/Fichier: —

Project/Projet: LE GROUPE MAURICE CENTRUM RETIREMENT

211 CENTRUM BLVD, OTTAWA, ONTARIO

Drawing title/Titre du dessin: ELECTRICAL SITE PLAN SPECIFICATION AND DETAILS

Scale: AS NOTED

Project no./No. du projet: 2020-164

Design by: H.ROMANI

Drawn by: L.LALU

Checked by: D.VYAS

Date: April 21

Revision no.: —

Acad file/Fichier: —

Project/Projet: LE GROUPE MAURICE CENTRUM RETIREMENT

211 CENTRUM BLVD, OTTAWA, ONTARIO

Drawing title/Titre du dessin: ELECTRICAL SITE PLAN SPECIFICATION AND DETAILS

Scale: AS NOTED

Project no./No. du projet: 2020-164

Design by: H.ROMANI

Drawn by: L.LALU

Checked by: D.VYAS

Date: April 21

Revision no.: —

Acad file/Fichier: —

#18310

D07-12-20-0165