



EAST ELEVATION



WEST ELEVATION

FINISH MATERIAL LEGEND:

[B1] BRICK MASONRY - TYPE 1	[S1] STONE MASONRY	[AL1] METAL PANEL IN IMITATION-WOOD FINISH
[B2] BRICK MASONRY - TYPE 2	[AD] ALUMINUM DOOR	[E1] ENFOURÉ ALUMINUM PANEL, FINISHED
[B3] BRICK MASONRY - TYPE 3	[C1] ALUMINUM PANEL, (PINE FINISHED) (MIDDLE GREY)	[E2] CONCRETE (SPMOOTH FINISH)
[B4] BRICK MASONRY - LARGE FORMAT, STACKED	[AP-1] ALUMINUM PANEL, (PINE FINISHED) (LIGHT GREY)	[C2] CURTAIN WALL WITH SPANDREL PANEL
[B5] BRICK MASONRY - LARGE FORMAT, STACKED	[AP-2] ALUMINUM PANEL, (PINE FINISHED) (DARK GREY)	
[G1] GLASS BALCONY GUARD	[AP-3] ALUMINUM PANEL, (PINE FINISHED) (DARK GREY)	
[M1] METAL RAILING BALCONY GUARD	[C3] CORRUGATED METAL SIDING	

no.	date	revision
3	NOV. 20/20	ISSUED FOR REVIEW
2	AUG. 13/20	ISSUED FOR REVIEW
1	AUG. 7/20	ISSUED FOR REVIEW

It is the responsibility of the appropriate contractor to check and verify all dimensions on site and report all errors and/or omissions to the architect.

All contractors must comply with all pertinent codes and by-laws.

Do not scale drawings.

This drawing may not be used for construction until signed.

Copyright reserved.

Hobin Architecture Incorporated
63 Parnilla Street
Ottawa, Ontario
Canada K1S 9K7
T: 613-238-7200
F: 613-235-2005
E: mail@hobinarc.com
hobinarc.com



HOBIN
ARCHITECTURE

PROJECT/LOCATION:
**211 CENTRUM AVENUE
SENIOR LIVING**

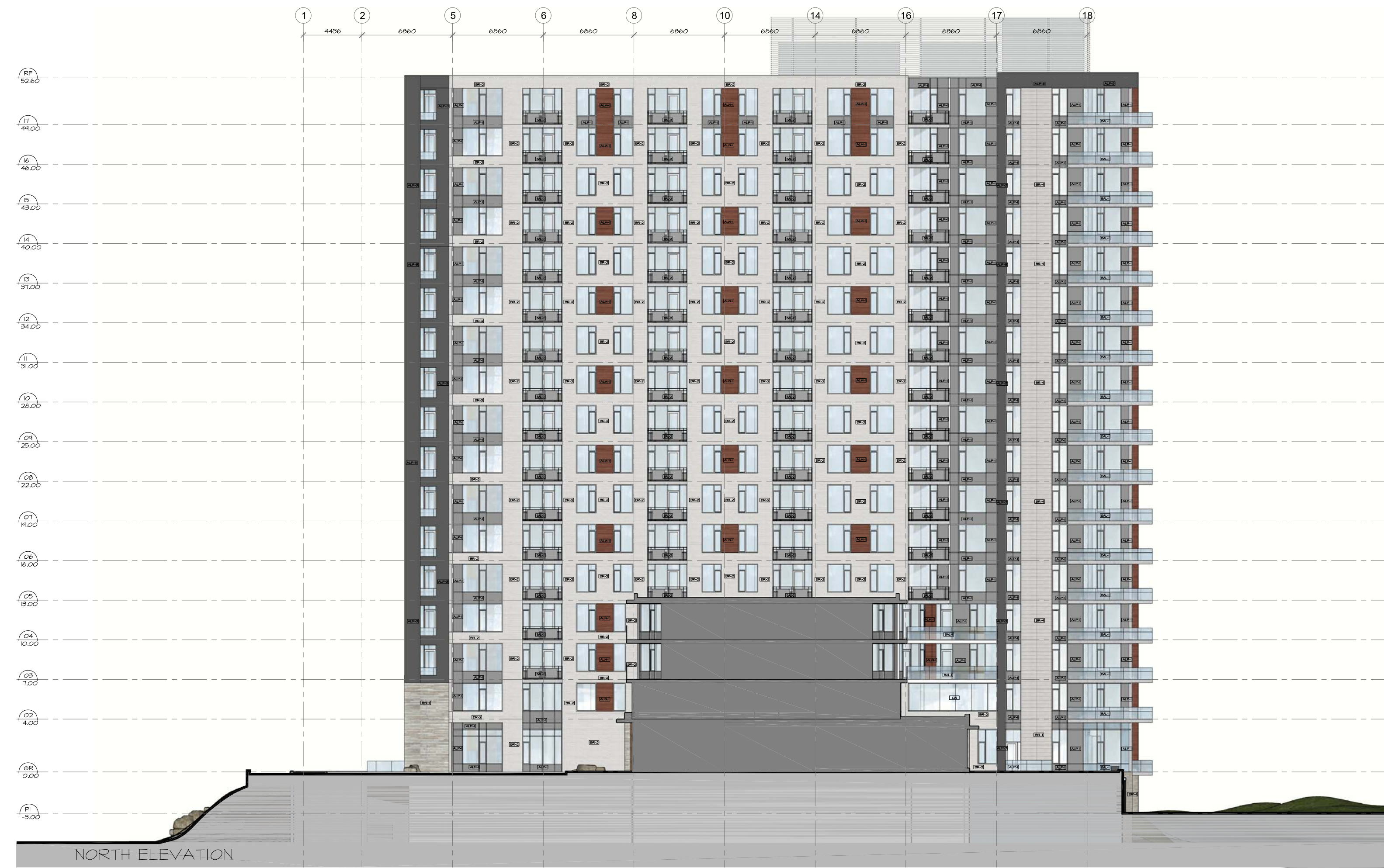
DRAWING TITLE:
ELEVATIONS

DRAWN BY: DATE: SCALE:
BAM NOVEMBER 20 2020 1:250

PROJECT:
1936

DRAWING NO.:
A3.01

REVISION NO.:



FINISH MATERIAL LEGEND:

[BR-1] BRICK MASONRY - TYPE 1	[STR] STONE MASONRY
[BR-2] BRICK MASONRY - TYPE 2	[ALD] ALUMINUM DOOR
[BR-3] BRICK MASONRY - TYPE 3	[ALF1] ALUMINUM PANEL (PINE FINISHED) (MIDDLE GREY)
[BR-4] BRICK MASONRY - LARGE FORMAT, STACKED	[ALF2] ALUMINUM PANEL (PINE FINISHED) (LIGHT GREY)
[GLA] GLASS BALCONY GUARD	[ALF3] ALUMINUM PANEL (PINE FINISHED) (DARK GREY)
[RAI] METAL RAILING BALCONY GUARD	[COR] CORRUGATED METAL SIDING
	[ALP] METAL PANEL IN IMITATION WOOD FINISH
	[EC] EXPOSED ARCHITECTURAL FINISHED CONCRETE (SMOOTH FINISH)
	[GT] CURTAIN WALL WITH SPANDREL PANEL

no.	date	revision
3	NOV. 20/20	ISSUED FOR REVIEW
2	AUG. 13/20	ISSUED FOR REVIEW
1	AUG. 17/20	ISSUED FOR REVIEW

It is the responsibility of the appropriate contractor to check and verify all dimensions on site and report all errors and/or omissions to the architect.

All contractors must comply with all pertinent codes and by-laws.

Do not scale drawings.

This drawing may not be used for construction until signed.

Copyright reserved.

Hobin Architecture Incorporated
63 Pamela Street
Ottawa, Ontario
Canada K1S 3K7
T: 613-238-7200
F: 613-235-2005
E: mail@hobinarc.com
hobinarc.com

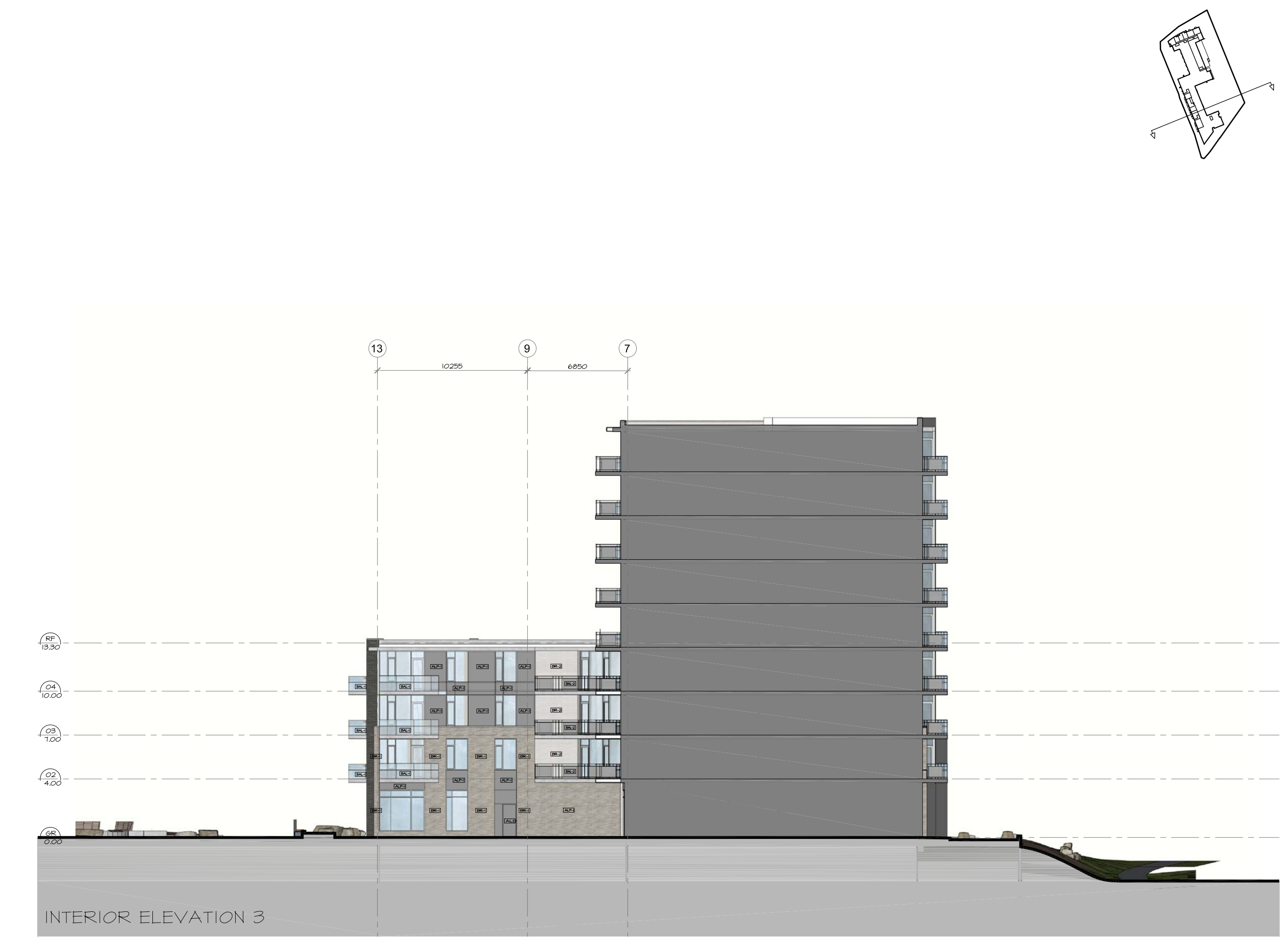
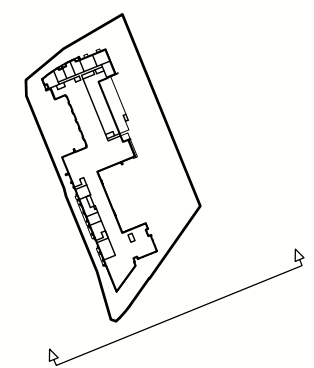
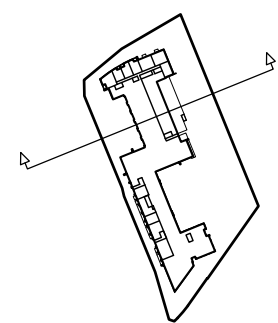


HOBIN
ARCHITECTURE

PROJECT/LOCATION:
211 CENTRUM AVENUE
SENIOR LIVING

DRAWING TITLE:
ELEVATIONS

DRAWN BY: BAM	DATE: NOVEMBER 20 2020	SCALE: 1:250
PROJECT: 1936		DRAWING NO.: A3.02
		REVISION NO.:



FINISH MATERIAL LEGEND:

BRICK MASONRY - TYPE 1	STONE MASONRY	METAL PANEL IN IRRADIATION-HOOD FINISH
BRICK MASONRY - TYPE 2	ALUMINUM DOOR	EXPOSED ARCHITECTURAL FINISHED CONCRETE (SMOOTH FINISH)
BRICK MASONRY - TYPE 3	ALUMINUM PANEL (FIRE FINISHED) (MEDIUM GREY)	CURTAIN WALL WITH SPANDELR PANEL
BRICK MASONRY - LARGE FORMAT, STACKED	ALUMINUM PANEL (FIRE FINISHED) (LIGHT GREY)	
GLASS BALCONY GUARD	ALUMINUM PANEL (FIRE FINISHED) (DARK GREY)	
METAL RAILING BALCONY GUARD	CORRUGATED METAL SIDING	

no.	date	revision
3	NOV. 20/20	ISSUED FOR REVIEW
2	AUG. 13/20	ISSUED FOR REVIEW
1	AUG. 11/20	ISSUED FOR REVIEW

It is the responsibility of the appropriate contractor to check and verify all dimensions on site and report all errors and/or omissions to the architect.

All contractors must comply with all pertinent codes and by-laws.

Do not scale drawings.

This drawing may not be used for construction until signed.

Copyright reserved.

Hobin Architecture Incorporated
63 Pamela Street
Ottawa, Ontario
Canada K1S 3K7
T: 613-238-7200
F: 613-235-2005
E: mail@hobinarc.com
hobinarc.com



HOBIN
ARCHITECTURE

PROJECT/LOCATION:	
211 CENTRUM AVENUE SENIOR LIVING	
DRAWING TITLE:	
ELEVATIONS	
DRAWN BY: BAM	DATE: NOVEMBER 20 2020
SCALE: 1:250	PROJECT: 1936
	DRAWING NO.: A3.03
	REVISION NO.: