

OTTAWA - CARLETON DISTRICT SCHOOL BOARD

GENERAL NOTES

- All general site information and conditions compiled from existing plans, surveys and consultant's field notes. Report all discrepancies prior to any work. No responsibility is born by the Consultant for unknown subsurface conditions.
- The location of the utilities is approximate only, and the exact location should be determined by consulting the municipal authorities and utility companies concerned. The Contractor shall prove the location of utilities and shall be responsible for adequate protection from damage.
- All dimensions shown are to be verified on site prior to any construction. No deviations are to be made from the layouts as shown on this plan without prior consultation with the Landscape Architect and Owner.
- Obtain approval of Landscape Architect for granular base and layout of all pavement areas prior to construction.
- Stake planting locations and receive approval of Landscape Architect, prior to excavation of any planting pits. No substitutions of plant material shall be made without prior approval of the Landscape Architect.
- Where clay is encountered proper drainage must be ensured in tree/shrub pits, prior to planting. Have method approved by Landscape Architect.
- All sodded areas to receive a minimum of 150mm of topsoil over graded sub-base. If sod with mesh is used, mesh to be removed completely during sodding operations. Sod shall come from an approved source and shall be laid within 24 hours of being cut in the nursery. Only nursery sod shall be used.
- Final subgrade is to be approved by the Landscape Architect prior to sod being laid.
- Maintain positive surface runoff through the entire construction period.
- Reinstate all areas and items damaged as a result of construction activities.

**NOTE:**  
**THIS PLAN IS ISSUED FOR SITE PLAN CONTROL SUBMISSION ONLY.**  
**ADDITIONAL DETAILING AND SPECIFICATIONS ARE REQUIRED PRIOR TO TENDERING OR CONSTRUCTION.**

01	Issued for Site Plan Control	2019/11/25
no.	revision	date

N45 ARCHITECTURE INC.

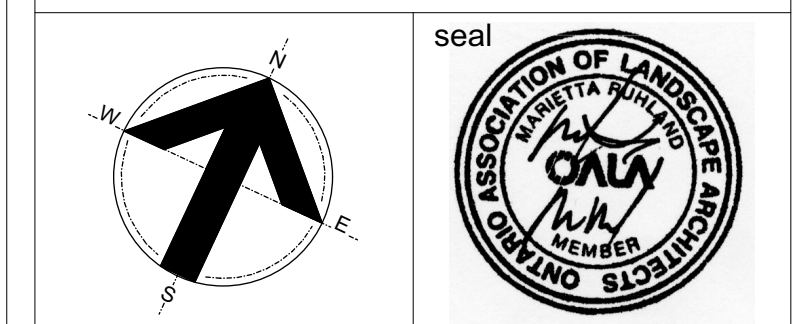
71 Bank Street, 7th Floor - Ottawa, Ontario, K1P 5N2  
tel. 613.224.0095 fax 613.224.9811

Ruhland & Associates Ltd

200-1750 Courtwood Crescent, Ottawa, Ontario K2C 2B5  
P (613) 224-4744 x 222 F (613) 224-1151 info@ruhland.ca www.ruhland.ca

FERNBANK ELEMENTARY SCHOOL  
OTTAWA-CARLETON DISTRICT SCHOOL BOARD

COPE DRIVE  
OTTAWA, ONTARIO  
K2S 1B6

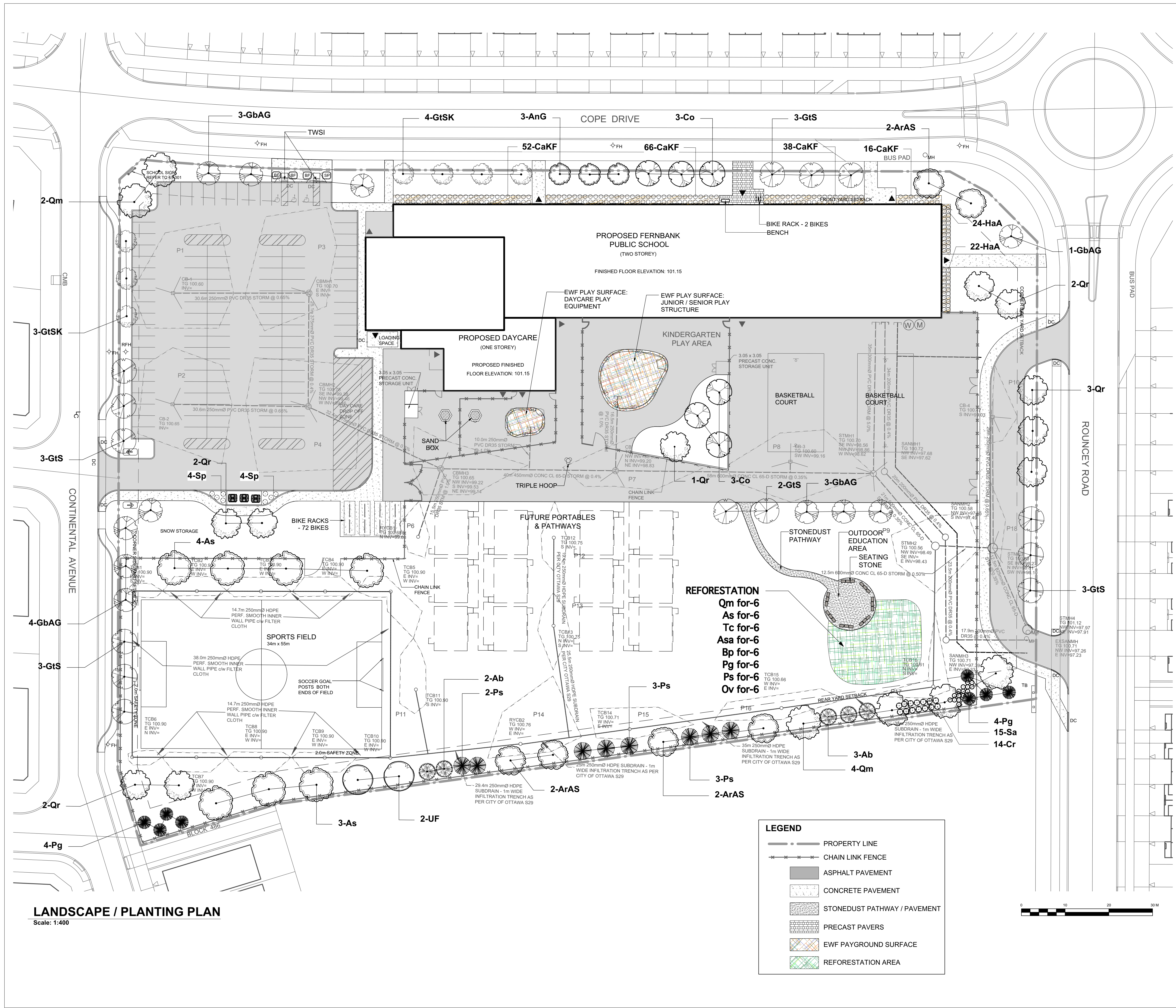


drawing title  
**LANDSCAPE / PLANTING PLAN**

scale	AS NOTED	drawn by	AA / TF
date	01 NOV, 2019	checked by	MR
project number	N45 19-467	drawing number	<b>L-01</b>
RA	19-1596		

CONTRACTOR TO VERIFY ALL DIMENSIONS AND NOTIFY THE ARCHITECT OF ANY DISCREPANCIES BEFORE WORK COMMENCES.

DO NOT SCALE DRAWINGS

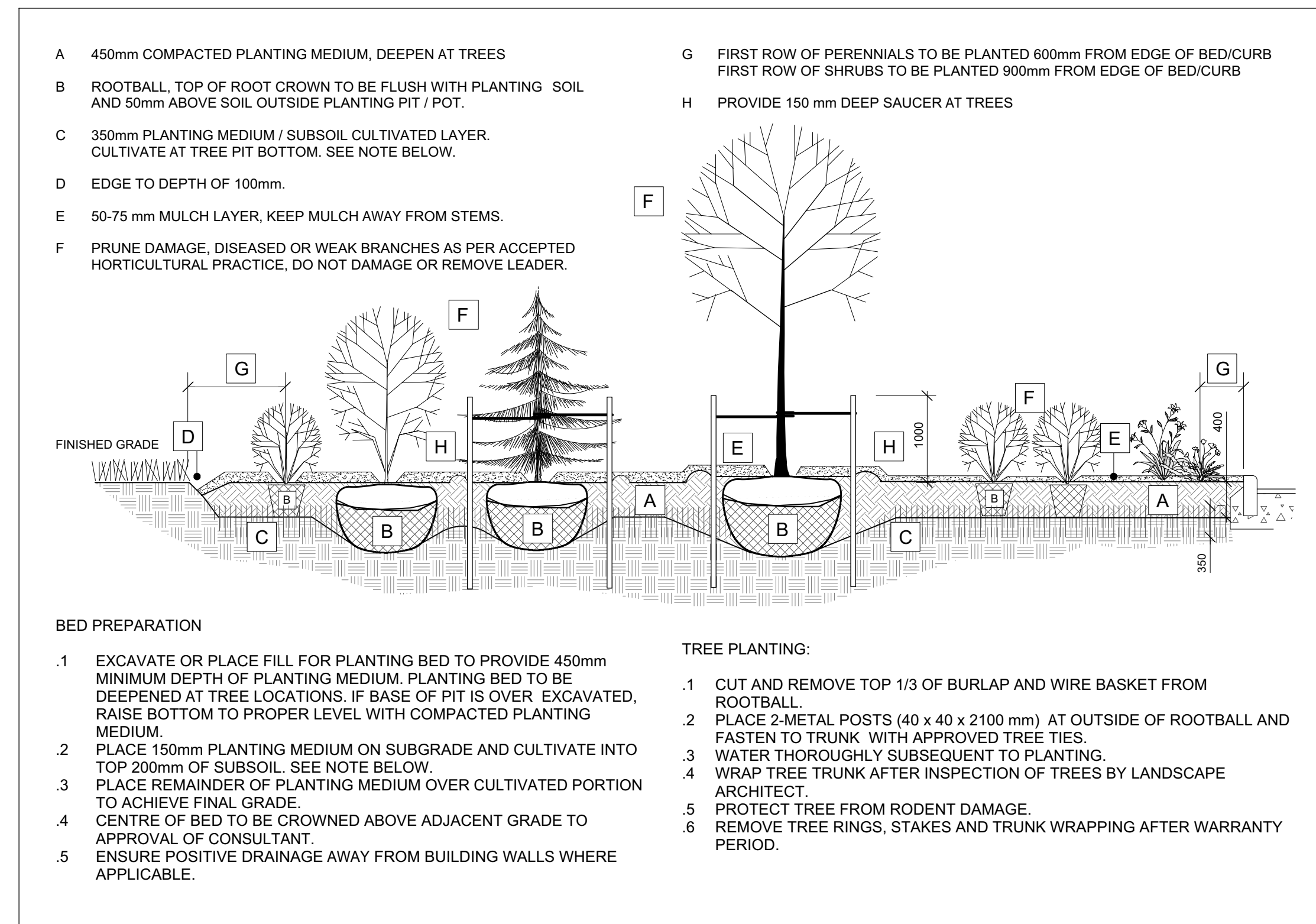


**LANDSCAPE / PLANTING PLAN**  
Scale: 1:400



ID	Qty	Botanical Name	Common Name	Scheduled Size	Remarks
<b>STANDARD PLANTING</b>					
<b>Trees</b>					
	13	93	13	13	13
<b>Ab</b>	5	Abies balsamea	Balsam Fir	200 cm ht	
<b>AnG</b>	3	Acer nigrum 'Green Column'	Green Column Black Maple	45mm caliper	WB Staked
<b>ArAS</b>	6	Acer rubrum 'Autumn Spire'	Red Maple	50mm caliper	WB Staked
<b>As</b>	7	Acer saccharum	Sugar Maple	70mm caliper	WB Staked
<b>Co</b>	6	Celtis occidentalis	Hackberry	90mm caliper	WB Staked
<b>GbAG</b>	11	Ginkgo biloba 'Autumn Gold'	Autumn Gold Maidenhair Tree	60mm caliper	WB Staked
<b>GtS</b>	14	Gleditsia triacanthos inermis 'Shademaster'	Gleditsia Shademaster	90mm caliper	WB Staked
<b>GtSK</b>	7	Gleditsia triacanthos inermis 'Draves'	Streetkeeper Honeylocust	60mm caliper	WB Staked
<b>Pg</b>	8	Picea glauca	White Spruce	200 cm ht	WB, Staked
<b>Ps</b>	8	Pinus strobus	Eastern White Pine	200 cm ht.	WB, Staked
<b>Qm</b>	6	Quercus macrocarpa	Burr Oak	70mm caliper	WB, Staked
<b>Qr</b>	10	Quercus rubra	Northern Red Oak	70mm caliper	WB Staked
<b>UF</b>	2	Ulmus 'Fronteir'	Fronteir Elm	70mm caliper	WB Staked
<b>Shrubs</b>					
	2	61	2	2	2
<b>HaA</b>	46	Hydrangea arborescens 'Annabelle'	Annabelle Hydrangea	2 gallon pot	Potted
<b>Sa</b>	15	Symphoricarpos albus	Snowberry	50 cm ht.	Potted
<b>Perennials</b>					
	2	180	2	1	2
<b>CaKF</b>	172	Calamagrostis x acutiflora 'Karl Foerster'	Feather Reed Grass		Potted
<b>Sp</b>	8	Syringa x prestoniae	Preston Lilac	100 cm ht.	Potted
<b>REFORESTATION - TREES - Plant conifers in groupings of 3-5, deciduous to be mixed throughout beds</b>					
	8	48	8	8	8
<b>As for</b>	6	Acer saccharum	Sugar Maple	150 cm ht.	Bare root
<b>Asa for</b>	6	Acer rubrum	Red Maple	150 cm ht.	Bare root
<b>Bp for</b>	6	Betulus papyrifera	White Birch	150 cm ht.	Bare root
<b>Ov for</b>	6	Ostrya virginiana	American Hophornbeam	150 cm ht.	Bare root
<b>Pg for</b>	6	Picea glauca	White Spruce	75 cm ht.	Potted
<b>Ps for</b>	6	Pinus strobus	White Pine	50 cm ht.	Potted
<b>Qm for</b>	6	Quercus macrocarpa	Bur Oak	150 cm ht.	Bare root
<b>Tc for</b>	6	Tsuga canadensis	Canadian Hemlock	75 cm ht.	Potted

**Plant List**



**Planting Bed on Grade**  
NTS



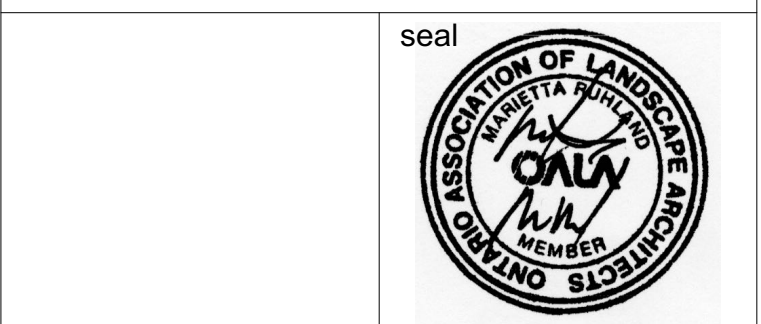
- GENERAL NOTES**
- All general site information and conditions compiled from existing plans, surveys and consultant's field notes. Report all discrepancies prior to any work. No responsibility is born by the Consultant for unknown subsurface conditions.
  - The location of the utilities is approximate only, and the exact location should be determined by consulting the municipal authorities and utility companies concerned. The Contractor shall prove the location of utilities and shall be responsible for adequate protection from damage.
  - All dimensions shown are to be verified on site prior to any construction. No deviations are to be made from the layouts as shown on this plan without prior consultation with the Landscape Architect and Owner.
  - Obtain approval of Landscape Architect for granular base and layout of all pavement areas prior to construction.
  - Stake planting locations and receive approval of Landscape Architect, prior to excavation of any planting pits. No substitutions of plant material shall be made without prior approval of the Landscape Architect.
  - Where clay is encountered proper drainage must be ensured in tree/shrub pits, prior to planting. Have method approved by Landscape Architect.
  - All sodded areas to receive a minimum of 150mm of topsoil over graded sub-base. If sod with mesh is used, mesh to be removed completely during sodding operations. Sod shall come from an approved source and shall be laid within 24 hours of being cut in the nursery. Only nursery sod shall be used.
  - Final subgrade is to be approved by the Landscape Architect prior to sod being laid.
  - Maintain positive surface runoff through the entire construction period.
  - Reinstlate all areas and items damaged as a result of construction activities.

01	Issued for Site Plan Control	2019/11/25
no.	revision	date

**N45 ARCHITECTURE INC.**  
71 Bank Street, 7th Floor - Ottawa, Ontario, K1P 5N2  
tel. 613.224.0095 fax 613.224.9811

**Ruhland & Associates Ltd**  
20-1750 Courtwood Crescent, Ottawa, Ontario K3C 2B5  
P (613) 224-4744 x 322 F (613) 224-1131 info@ra.ca www.ra.ca

FERNBANK ELEMENTARY SCHOOL  
OTTAWA-CARLETON DISTRICT  
SCHOOL BOARD  
COPE DRIVE  
OTTAWA, ONTARIO  
K2S 1B6



drawing title  
**PLANT LIST / DETAILS**

scale AS NOTED	drawn by AA / TF
date 01 NOV, 2019	checked by MR
project number N45 19-467	drawing number <b>L-02</b>
RA 19-1596	revision

CONTRACTOR TO VERIFY ALL DIMENSIONS AND NOTIFY THE ARCHITECT OF ANY DISCREPANCIES BEFORE WORK COMMENCES.

DO NOT SCALE DRAWINGS