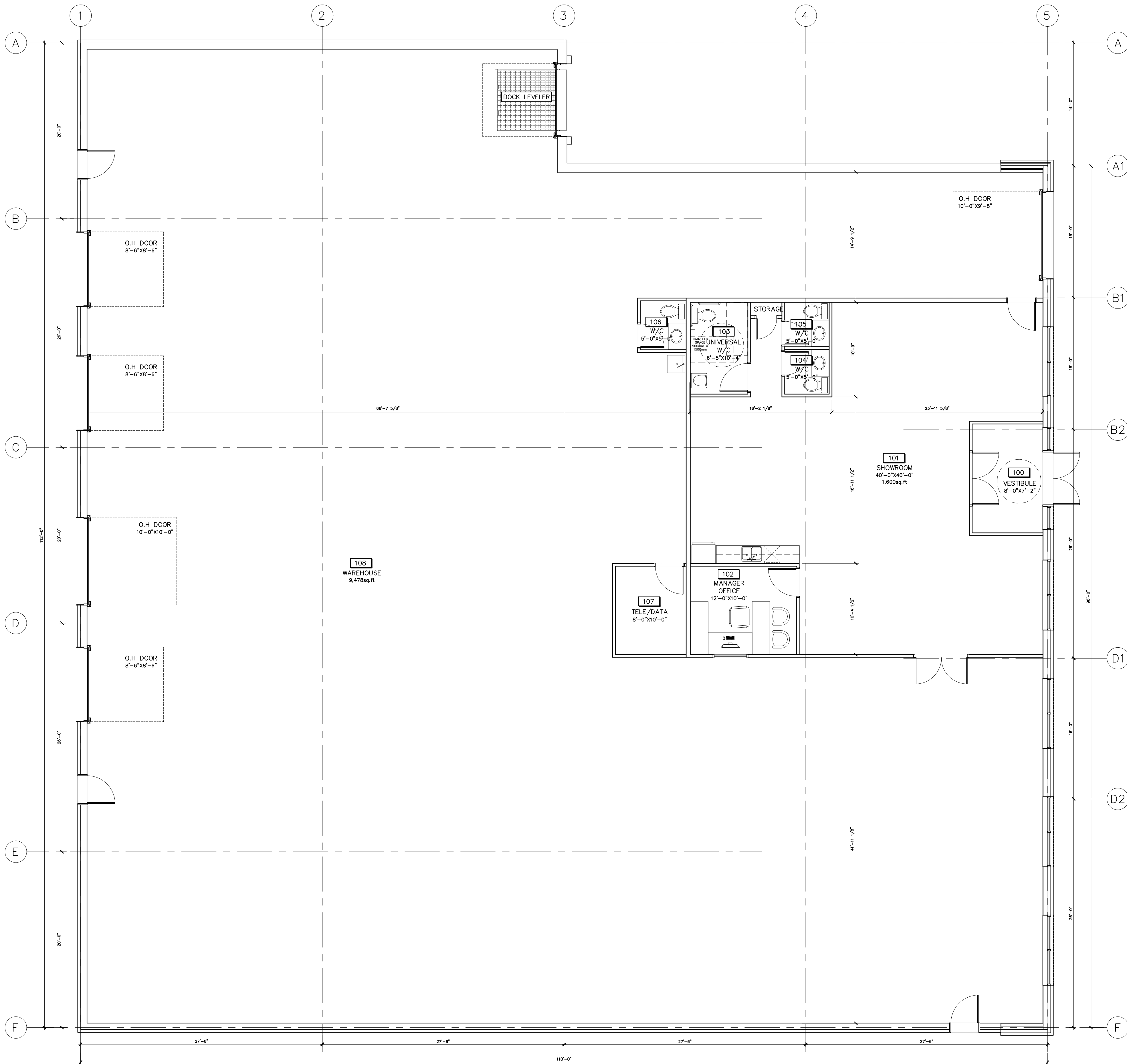
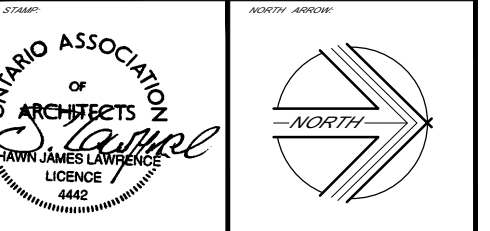


NOTES:
 1. ALL DIMENSIONS TO FACE UNLESS OTHERWISE SPECIFIED.
 2. ALL DIMENSIONS TO FACE UNLESS OTHERWISE SPECIFIED.
 3. ALL DIMENSIONS TO FACE UNLESS OTHERWISE SPECIFIED.
 4. ALL DIMENSIONS TO FACE UNLESS OTHERWISE SPECIFIED.
 5. ALL DIMENSIONS TO FACE UNLESS OTHERWISE SPECIFIED.
 6. ALL DIMENSIONS TO FACE UNLESS OTHERWISE SPECIFIED.
 7. ALL DIMENSIONS TO FACE UNLESS OTHERWISE SPECIFIED.
 8. ALL DIMENSIONS TO FACE UNLESS OTHERWISE SPECIFIED.
 9. ALL DIMENSIONS TO FACE UNLESS OTHERWISE SPECIFIED.
 10. ALL DIMENSIONS TO FACE UNLESS OTHERWISE SPECIFIED.

PROPOSED FINISHES:
 1. FLOOR - POLISHED CONCRETE
 2. WALLS - GYP. BOARD
 3. CEILING - POP
 4. DOORS - 1 1/2" MIN. THICK
 5. WINDOWS - 1 1/2" MIN. THICK



01 PROPOSED GROUND FLOOR PLAN
 A200 SCALE: 1:75



20		
19		
18		
17		
16		
15		
14		
13		
12		
11		
10		
09		
08		
07		
06		
05		
04		
03	2018-12-13	ISSUED FOR SITE PLAN CONTROL
02	2018-10-26	PRELIMINARY REVIEW
01	2018-10-05	PRELIMINARY REVIEW
00	DATE:	REVISION:

SJL
LAWRENCE
ARCHITECT
 INCORPORATED
 18 Deakin Street
 Suite 205
 Ottawa, ON
 K2E 8B7
 T: (613) 739-7770
 F: (613) 739-7703
 info@sjlarchitect.com

THIS DRAWING IS THE SOLE PROPERTY OF
 S.J. LAWRENCE ARCHITECT INCORPORATED
 REPRODUCTION IS NOT PERMITTED

DATE	BY	DATE	BY
2018-09-20	S.J.L.	2018-12-13	S.J.L.
AS NOTED			

RETAIL/DISTRIBUTION BUILDING
 2165 ROBERTSON ROAD,
 OTTAWA, ON.

JOB NUMBER: SE - 085 - 18

PROPOSED GROUND FLOOR PLAN

A 200

APPLICATION NUMBER: XX - 000 - 00