

**40 YEAR CANOPY CALCULATION:**

- 398,900 m2 site area
- 19 Large deciduous trees proposed (154m2 ea.)
- 8 coniferous trees proposed (79m2 ea.)
- 34 small deciduous trees proposed (7m2 ea.)
- Existing Tree Canopy (375,160m2)

**=378,956m2 canopy cover = 95% canopy cover**

\*Large deciduous tree calculated at 14m spread, large coniferous trees at 10m spread, small deciduous tree at 3m spread.

- GENERAL NOTES:**
- IT IS THE RESPONSIBILITY OF THE APPROPRIATE CONTRACTOR OR OFFICIAL TO REPORT ANY ERRORS, OMISSIONS OR DISCREPANCIES ON THIS PLAN WITH ACTUAL SITE CONDITIONS TO THE LANDSCAPE ARCHITECT BEFORE PROCEEDING WITH CONSTRUCTION.
  - THE CONTRACTOR IS TO NOTIFY ALL UTILITY COMPANIES AND AUTHORITIES PRIOR TO ANY EXCAVATION AND ASCERTAIN LOCATIONS OF UNDERGROUND SERVICES.
  - THE CONTRACTOR IS TO REINSTATE ALL AREAS AND ITEMS DAMAGED AS A RESULT OF CONSTRUCTION ACTIVITY.
  - THE CONTRACTOR IS TO COMPLY WITH ALL PERTINENT CODES AND BY-LAWS.
  - THE CONTRACTOR IS TO MAINTAIN A POSITIVE SURFACE RUN-OFF THROUGHOUT THE ENTIRE CONSTRUCTION PERIOD.
  - THE LANDSCAPE ARCHITECT IS NOT RESPONSIBLE FOR SUBSURFACE CONDITIONS.
  - THE CONTRACTOR IS TO IDENTIFY ALL EXISTING TREES TO REMAIN ON SITE WITH THE LANDSCAPE ARCHITECT PRIOR TO CONSTRUCTION.
  - THE CONTRACTOR IS TO STAKE THE PROPOSED LOCATION OF ALL PLANT MATERIAL IN CONJUNCTION WITH THE LANDSCAPE ARCHITECT PRIOR TO CONSTRUCTION.
  - MINIMUM DISTANCES FOR SELECTED DECIDUOUS TREES ARE AS FOLLOWS:
    - 9.1. BUILDING FOUNDATIONS - 7.5M
    - 9.2. SIDEWALKS - 1.5M
    - 9.3. PUBLIC STREETS - 2.5M
    - 9.4. UNDERGROUND INFRASTRUCTURE - 2.0M
  - ALL TREES WITHIN 1M OF UNDERGROUND UTILITY TRENCHES ARE TO BE EXCAVATED BY HAND.
  - REMOVE ALL PROTECTIVE WRAPPING FROM TREE TRUNKS AFTER INSTALLATION.
  - STAKING OF TREES SHALL ONLY BE PERFORMED IF NECESSARY.
  - ENSURE THAT MULCH IS PULLED BACK A MINIMUM DISTANCE OF 75MM FROM BASE OF TREE TRUNK.

- LEGEND**
- PROPOSED DECIDUOUS SHADE TREE (LARGE) - 30m3 SOIL VOLUME AT A 1.5m DEPTH
  - PROPOSED DECIDUOUS FLOWERING TREE (SMALL) - 25m3 SOIL VOLUME AT A 1.5m DEPTH
  - PROPOSED CONIFEROUS TREE (LARGE) - 25m3 SOIL VOLUME AT A 1.5m DEPTH
  - PROPOSED SHRUBS
  - PROPOSED SOD
  - PROPOSED SEED
  - PROPOSED INTERLOCK PAVING
  - PROPOSED RIVERSTONE
  - PROPOSED COMPACTED GRAVEL
  - PROPOSED WETLAND SEED MIXTURE
  - EXISTING VEGETATION TO REMAIN

**CLIENT**

**IBPS TEMPLE**

**CONSULTANTS**

**ARCHITECTS: GRC ARCHITECTS**

47 RUE CLARENCE, SUITE 401  
OTTAWA, ON. K1N 9K1  
613-241-8203

**CIVIL ENGINEERS:**

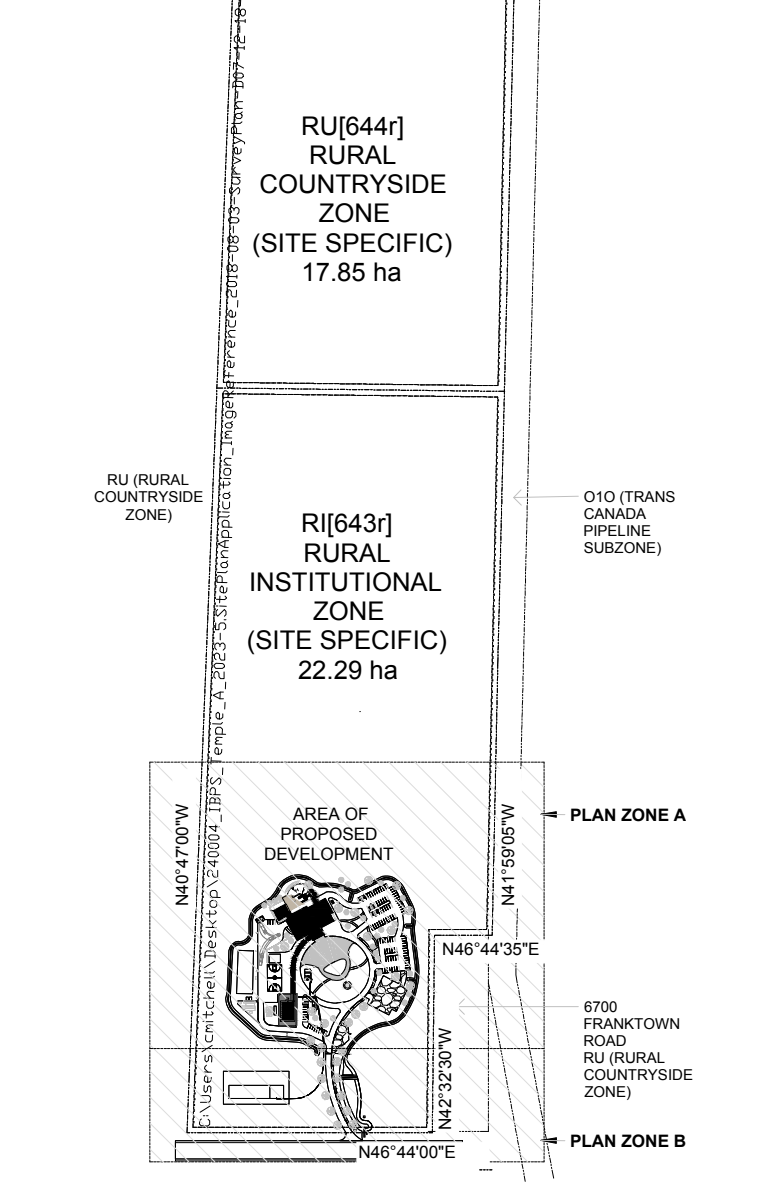
**exp Services Inc.**

T: +1 613 688 1999 | F: +1 613 225 7330  
2650 Queensview Drive, Unit 100  
Ottawa, ON K2B 8H6

**SURVEYORS:**

**EGIS**

215 MENTEN PLACE, SUITE 104  
OTTAWA, ON. K2H 5C1  
613-836-2184



PART LOT 19 CONCESSION 3 GOULBOURN PART 1 4R7040, EXCEPT PART 1 4R32299 CITY OF OTTAWA

No.	Issue	Date	ISSUED BY
3	REVISED PER CITY COMMENTS	08/19/2025	ML/JL
2	ISSUED FOR SITE PLAN CONTROL	06/12/2025	LC/JL
1	ISSUED FOR SITE PLAN CONTROL	12/18/2024	LC/JL

**JAMES B. LENNOX & ASSOCIATES INC.**  
**LANDSCAPE ARCHITECTS**

3332 CARLING AVE. OTTAWA, ONTARIO K2H 5A8  
Tel. (613) 722-5168 Fax. (1866) 343-3942

**PROJECT**

IBPS FO GUANG SHAN TEMPLE

6688 FRANKTOWN ROAD, RICHMOND, ON

**DRAWING**

LANDSCAPE PLAN

**STAMP**

**SCALE**

AS SHOWN

**START DATE**

MARCH, 2024

**PROJECT NO.**

24-GRC-2378

**PROJECT NORTH**

**DRAWING NO.**

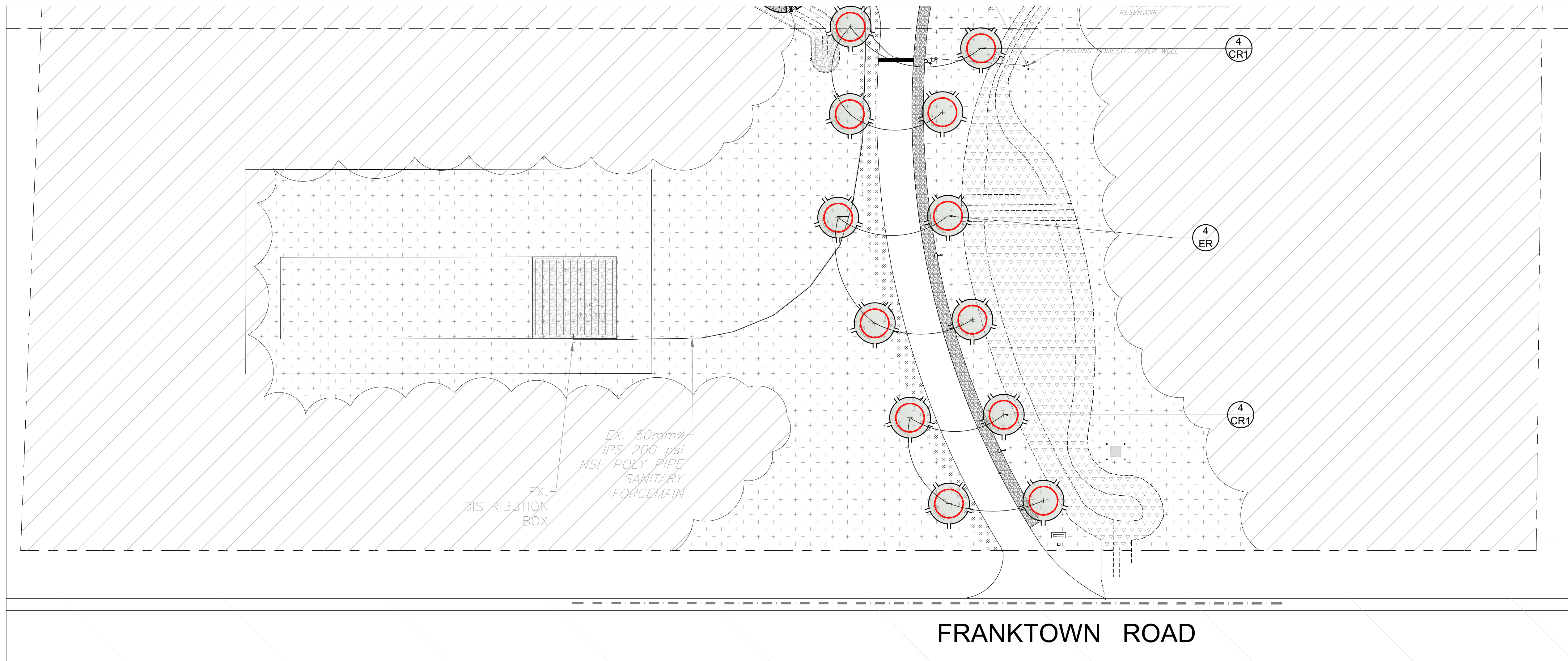
**L-100**

PLOT SIZE ARCH-D

**1 LANDSCAPE PLAN AREA OF DEVELOPMENT - PLAN AREA A**  
L-100 SCALE 1:400

**APPROVED**  
By Adam Brown at 12:40 pm, Feb 18, 2026

#19269



- LEGEND**
- PROPOSED DECIDUOUS SHADE TREE (LARGE)  
30m<sup>3</sup> SOIL VOLUME AT A 1.5m DEPTH
  - PROPOSED DECIDUOUS FLOWERING TREE (SMALL)  
25m<sup>3</sup> SOIL VOLUME AT A 1.5m DEPTH
  - PROPOSED CONIFEROUS TREE (LARGE)  
25m<sup>3</sup> SOIL VOLUME AT A 1.5m DEPTH
  - PROPOSED SHRUBS
  - PROPOSED SOD
  - PROPOSED SEED
  - PROPOSED INTERLOCK PAVING
  - PROPOSED RIVERSTONE
  - PROPOSED COMPACTED GRAVEL
  - PROPOSED WETLAND SEED MIXTURE
  - EXISTING VEGETATION TO REMAIN

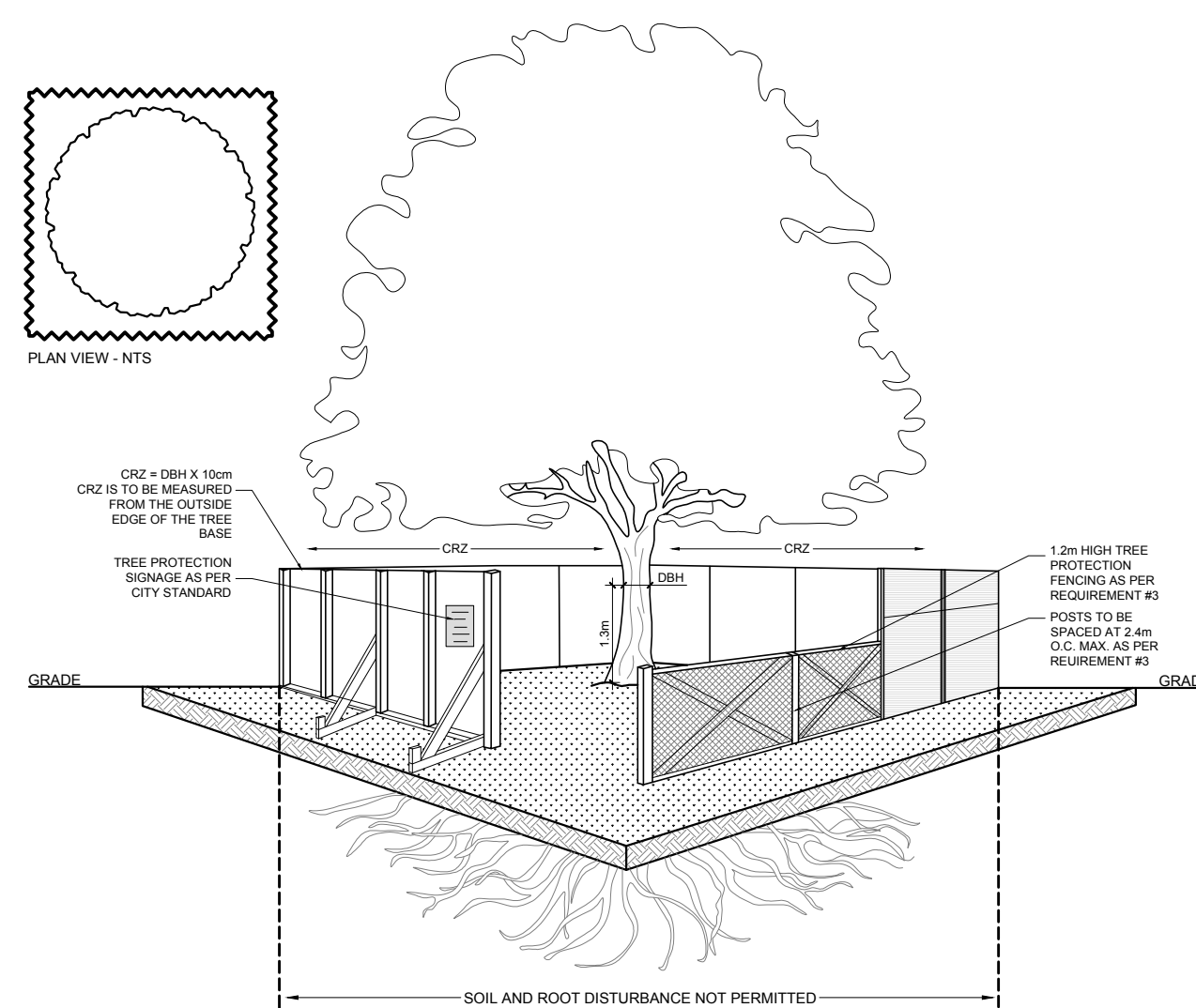
**CLIENT**  
**IBPS TEMPLE**

**CONSULTANTS**  
ARCHITECTS: **GRC ARCHITECTS**  
47 RUE CLARENCE, SUITE 401  
OTTAWA, ON. K1N 9K1  
613-241-8203

**CIVIL ENGINEERS:**  
**exp Services Inc.**  
T: +1.613.688.1999 | F: +1.613.225.7330  
2650 Queensview Drive, Unit 100  
Ottawa, ON K2B 8H6

**SURVEYORS:**  
**EGIS**  
215 MENTEN PLACE, SUITE 104  
OTTAWA, ON. K2H 5C1  
613-836-2184

**1 LANDSCAPE PLAN AREA OF DEVELOPMENT - PLAN AREA B**  
L-200 SCALE 1:400



**TREE PROTECTION REQUIREMENTS:**

- PRIOR TO ANY WORK ACTIVITY WITHIN THE CRITICAL ROOT ZONE (CRZ = 10x DIAMETER) OF A TREE, TREE PROTECTION FENCING MUST BE INSTALLED SURROUNDING THE CRITICAL ROOT ZONE AND REMAIN IN PLACE UNTIL THE WORK IS COMPLETE.
- UNLESS PLANS ARE APPROVED BY CITY FORESTRY STAFF, FOR WORK WITHIN THE CRZ:
  - DO NOT PLACE ANY MATERIAL OR EQUIPMENT INCLUDING OUTHOUSES.
  - DO NOT ATTACH ANY SIGNS, NOTICES OR POSTERS TO ANY TREE.
  - DO NOT RAISE OR LOWER THE EXISTING GRADE, TUNNEL OR BORE WHEN DIGGING.
  - DO NOT DAMAGE THE ROOT SYSTEM, TRUNK, OR BUNCHES OF ANY TREE.
  - ENSURE THAT EXHAUST FUMES FROM ALL EQUIPMENT ARE NOT DIRECTED TOWARD ANY TREE CANOPY.
  - DO NOT EXTEND HARD SURFACING OR SIGNIFICANTLY CHANGE LANDSCAPING.
- TREE PROTECTION FENCING MUST BE AT LEAST 1.2m IN HEIGHT AND BE CONSTRUCTED OF RIGID OR FRAMED MATERIALS (E.G. MODULAR STEEL PLYWOOD HOARDING, OR SNOW FENCE ON A 2"x4" WOOD FRAME) WITH POSTS 2.4m APART. SUCH THAT THE FENCE LOCATION CANNOT BE ALTERED. ALL SUPPORTS AND BRACING MUST BE PLACED OUTSIDE OF THE CRZ AND INSTALLATION MUST MINIMIZE DAMAGE TO EXISTING ROOTS. (SEE DETAIL).
- THE LOCATION OF THE TREE PROTECTION FENCING MUST BE DETERMINED BY AN ARBORIST AND DETAILED ON ANY ASSOCIATED PLANS FOR THE SITE (E.G. TREE CONSERVATION REPORT, TREE DISCLOSURE REPORT, ETC). THE PLAN AND CONSTRUCTED FENCING MUST BE APPROVED BY CITY FORESTRY STAFF PRIOR TO THE COMMENCEMENT OF WORK.
- IF THE FENCED TREE PROTECTION AREA MUST BE REDUCED TO FACILITATE CONSTRUCTION, MITIGATION MEASURES MUST BE PRESCRIBED BY AN ARBORIST AND APPROVED BY CITY FORESTRY STAFF. THESE MAY INCLUDE THE PLACEMENT OF PLYWOOD, WOOD CHIPS OR STEEL PLATING OVER THE ROOTS FOR PROTECTION OR THE PROPER PRUNING AND CARE OF ROOTS WHERE ENCOUNTERED.

**BY-LAWS:**  
ALL CITY-OWNED TREES ARE PROTECTED UNDER THE MUNICIPAL TREES AND NATURAL AREAS PROTECTION BY-LAW (2006-276) WITHIN THE URBAN AREA.  
PRIVATELY OWNED TREES GREATER THAN 90cm IN DIAMETER ON LOTS 1 HECTARE IN SIZE OR LESS, AND TREES GREATER THAN 150mm IN DIAMETER ON LOTS GREATER THAN 1 HECTARE, ARE PROTECTED UNDER THE URBAN TREE CONSERVATION BY-LAW (2009-200).

PROPOSED PLANT LIST						
KEY	QTY	BOTANICAL NAME	COMMON NAME	SIZE	CONDITION	REMARKS
<b>TREES</b>						
BO	2	Quercus macrocarpa	Bur Oak	50mm cal.	B&B	Deciduous
CA	2	Catalpa speciosa	Northern Catalpa	50mm cal.	B&B	Deciduous
CE	3	Thuja occidentalis	Eastern White Cedar	2000 mm ht.	B&B	Coniferous
CR1	11	Malus 'Makamik'	Makamik Crabapple	50mm cal.	B&B	Deciduous
CR2	2	Malus 'Royalty'	Royalty Crabapple	50mm cal.	B&B	Deciduous
ER	4	Cercis canadensis	Eastern Redbud	50mm cal.	B&B	Deciduous
FM	3	Acer x freemanii	Freeman's Maple	50mm cal.	B&B	Deciduous
HA	2	Crataegus crus-galli var. inermis	Thornless Cockspur Hawthorn	50mm cal.	B&B	Deciduous
HL	5	Gleditsia triacanthos	Honey Locust	50mm cal.	B&B	Deciduous
JTL	5	Syringa reticulata	Japanese Tree Lilac	50mm cal.	B&B	Deciduous
RM	1	Acer rubrum	Red Maple	50mm cal.	B&B	Deciduous
RO	5	Quercus rubra	Red Oak	50mm cal.	B&B	Deciduous
SB	9	Amelanchier canadensis	Serviceberry	50mm cal.	B&B	Deciduous
SM	2	Acer saccharum	Sugar Maple	50mm cal.	B&B	Deciduous
WS	7	Picea glauca	White Spruce	1800 mm ht.	B&B	Coniferous
<b>SHRUBS</b>						
CL	80	Syringa vulgaris	Common Purple Lilac	1200mm ht.	Potted	1500 mm o.c.
DW	460	Cornus sericea	Red Osier Dogwood	800mm ht.	Potted	1200mm o.c.
RR	300	Rosa rugosa	Rugosa Rose	800mm ht.	Potted	800 mm o.c.

**APPROVED**  
By Adam Brown at 12:41 pm, Feb 18, 2026

**ADAM BROWN**  
MANAGER, DEVELOPMENT REVIEW - RURAL  
PLANNING, REAL ESTATE & ECONOMIC DEVELOPMENT  
DEPARTMENT, CITY OF OTTAWA

No.	Issue	Date	Initials
3	REVISED PER CITY COMMENTS	08/19/2025	ML/JL
2	ISSUED FOR SITE PLAN CONTROL	06/12/2025	LC/JL
1	ISSUED FOR SITE PLAN CONTROL	12/18/2024	LC/JL

**JAMES B. LENNOX & ASSOCIATES INC.**  
**LANDSCAPE ARCHITECTS**  
3332 CARLING AVE. OTTAWA, ONTARIO K2H 5A8  
Tel. (613) 722-5168 Fax. (1866) 343-3942

**PROJECT**  
IBPS FO GUANG SHAN TEMPLE  
6688 FRANKTOWN ROAD, RICHMON, ON

**DRAWING**  
LANDSCAPE PLAN

**STAMP**

**SCALE**  
AS SHOWN

**START DATE**  
MARCH, 2024

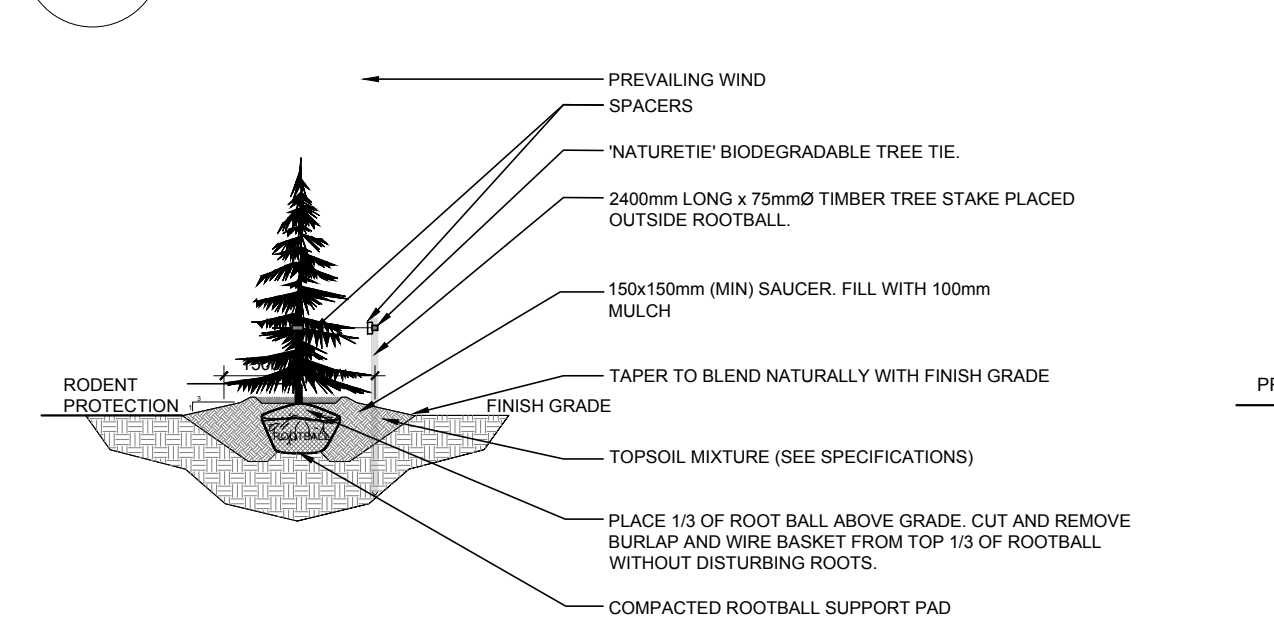
**PROJECT NO.**  
24-GRC-2378

**PROJECT NORTH**

**DRAWING NO.**  
**L-200**

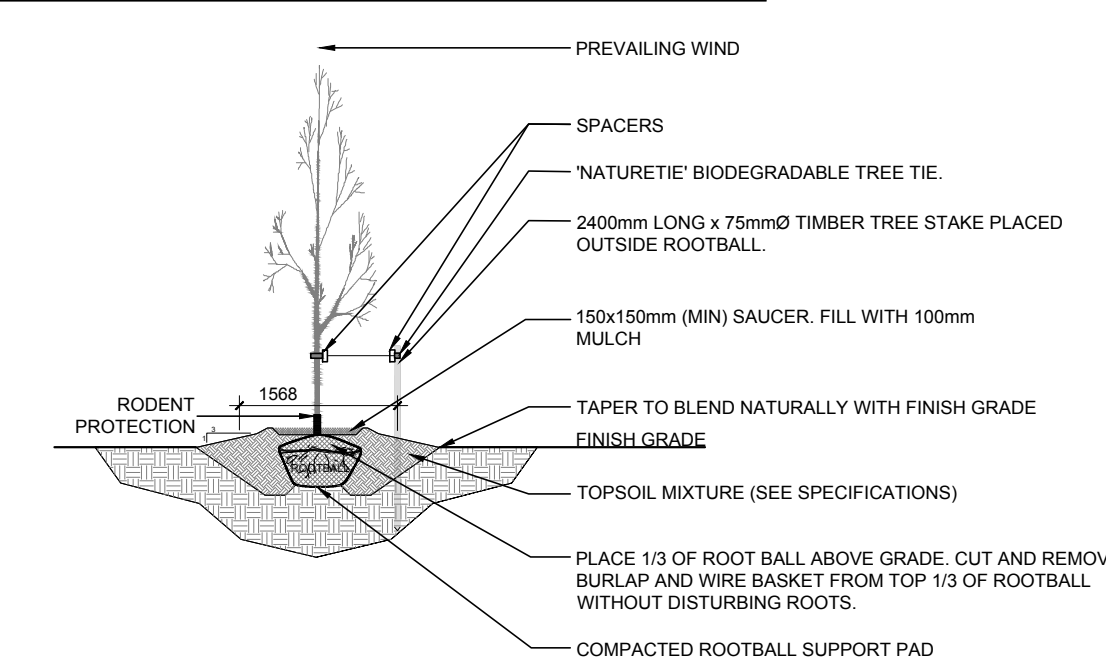
**PLOT SIZE ARCH-D**  
#19269

**2 TREE PROTECTION FENCING**  
L-200 SCALE: NTS

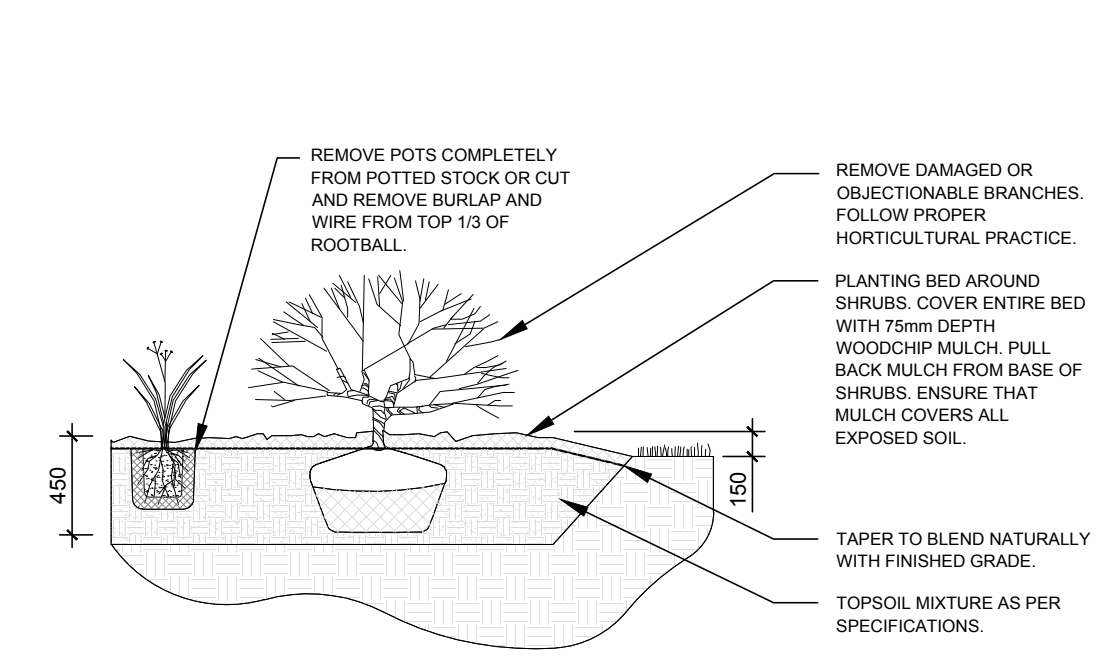


**3 CONIFEROUS TREE PLANTING**  
L-200 SCALE: NTS

**4 DECIDUOUS TREE PLANTING**  
L-200 SCALE: NTS



**5 SHRUB AND PERENNIAL PLANTING**  
L-200 SCALE: NTS



**6 PRECAST CONCRETE PAVERS**  
L-200 SCALE: NTS

