

# NOVATECH

Engineers, Planners & Landscape Architects

## Engineering

Land / Site  
Development

Municipal  
Infrastructure

Environmental /  
Water Resources

Traffic /  
Transportation

Structural

Recreational

## Planning

Land / Site  
Development

Planning Application  
Management

Municipal Planning  
Documents &  
Studies

Expert Witness  
(OMB)

Wireless Industry

## Landscape

### Architecture

Urban Design &  
Streetscapes

Open Space, Parks &  
Recreation Planning

Community &  
Residential  
Developments

Commercial &  
Institutional Sites

Environmental  
Restoration



## 3443 Innes Road

### Noise Impact Assessment Report

Engineering excellence. Planning precision. Inspired landscapes.

**3443 INNES ROAD  
NOISE IMPACT ASSESSMENT REPORT**

Prepared By:

**NOVATECH**

Suite 200, 240 Michael Cowpland Drive  
Kanata, Ontario  
K2M 1P6

Revised: June 2018  
December 2017

Novatech File No. 117077  
Ref No.: R-2018-064

June 8, 2018

BY COURIER

Project 1 Studio  
260 St. Patrick Street  
Suite 300  
Ottawa ON K1N 5K5

**Attention: Ryan Koolwine, Principal**

Dear Mr. Koolwine:

**Reference: Noise Impact Assessment Report  
3443 Innes Road  
Our File No.: 117077**

---

Enclosed please find the revised 'Noise Impact Assessment Report' for the proposed development of 3443 Innes Road in the City of Ottawa. This report has been updated to reflect a revised outdoor living area location at grade level at the rear of the building. In addition, detailed floor plans have been included in Appendix A.

The report will assess the impacts of noise from vehicular traffic on the proposed development using the MOE STAMSON software.

This report is submitted in support of a Zoning and Site Plan Control Application.

Please contact the undersigned, should you have any questions or require additional information.

Yours truly,

**NOVATECH**



Lisa Bowley, P.Eng.  
Project Manager | Land Development Engineering

Encl.

## TABLE OF CONTENTS

|  |          |
|--|----------|
| <b>1.0 INTRODUCTION.....</b>                         | <b>1</b> |
| <b>2.0 NOISE CONTROL GUIDELINES.....</b>             | <b>2</b> |
| 2.1 SOUND LEVEL CRITERIA .....                       | 2        |
| 2.2 ALTERNATIVES FOR NOISE ATTENUATION MEASURES..... | 2        |
| <b>3.0 NOISE SOURCES .....</b>                       | <b>5</b> |
| 3.1 MODELING RESULTS.....                            | 6        |
| 3.2 PROPOSED ATTENUATION MEASURES .....              | 7        |
| <b>4.0 CONCLUSIONS AND RECOMMENDATIONS .....</b>     | <b>9</b> |

### TABLES

|         |   |
|---------|---|
| Table 1 | Sound Level Criteria                    |
| Table 2 | Noise Attenuation Measure Requirements  |
| Table 3 | Traffic and Roadway Parameters          |
| Table 4 | Outdoor Living Area Noise Level Results |
| Table 5 | Plane of Window Noise Level Results     |

### FIGURES

|          |                        |
|----------|------------------------|
| Figure 1 | Key Plan               |
| Figure 2 | Noise Control Plan     |
| Figure 3 | Noise Barrier Location |

### APPENDICES

|            |   |
|------------|---|
| Appendix A | Elevation and Floor Plans                       |
| Appendix B | Environmental Noise Control Guidelines Excerpts |
| Appendix C | STAMSON Noise Modelling Program Results         |
| Appendix D | AIF Tables                                      |

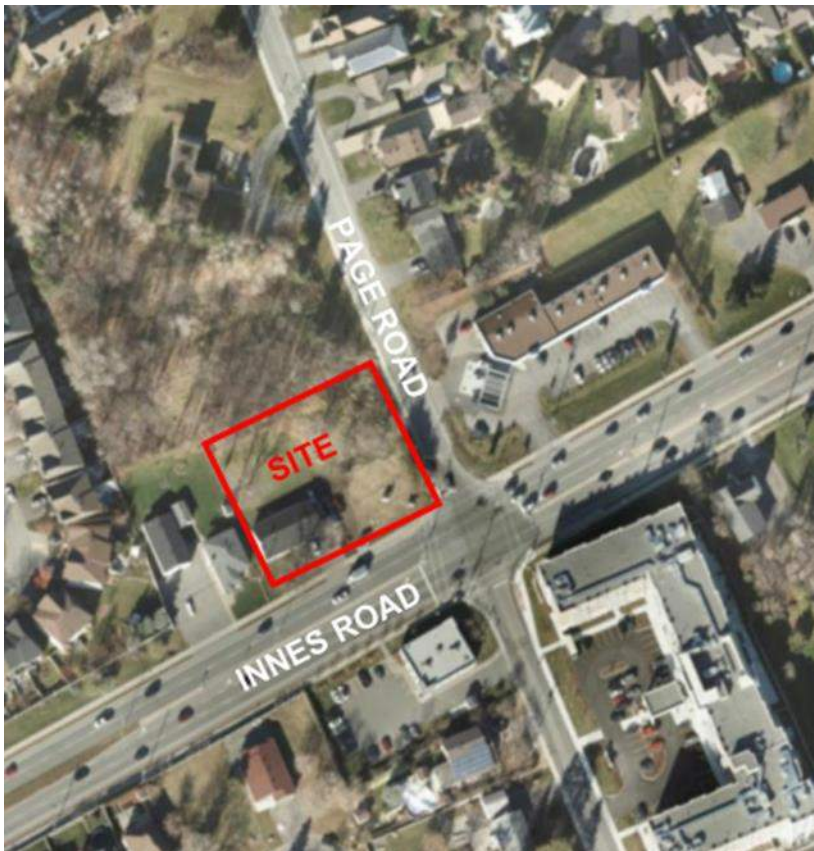
## 1.0 INTRODUCTION

Novatech has been retained to prepare this noise impact assessment report in support of the Zoning and Site Plan Control Application.

The report will assess the impacts of sound from vehicular traffic on the proposed development using the Ministry of the Environment (MOE) STAMSON 5.03 software and outline any necessary noise attenuation requirements for compliance with the City of Ottawa Environmental Noise Control Guidelines (ENCG) and the MOE Environmental Noise Guideline (MOE Publication NPC-300).

The subject site is located at 3443 Innes Road, west of Pagé Road, north of Innes Road, as shown on the Key Plan (**Figure 1**).

**Figure 1: Key Plan**



Project 1 Studio is proposing to redevelop the existing site (single dwelling) with a mixed-use development, including; Six ground floor retail units and thirty-four residential units located above the retail units (floors 2-6). The residential units will have small balconies which do not meet the minimum area requirements specified in the ENCG to be considered as noise sensitive outdoor living areas. A shared outdoor amenity space is provided at grade on the north-west side of the building. The elevation and floor plans are included in **Appendix A**.

## 2.0 NOISE CONTROL GUIDELINES

### 2.1 Sound Level Criteria

The City of Ottawa is concerned with noise from aircraft, roads, railways and transitways as expressed in the City of Ottawa Official Plan (Policy 4.8.6). As per Section 2.2 of the ENCG, unless otherwise noted, noise mitigation recommendations should be consistent with NPC-300 to the extent that is both reasonable and practical.

The areas that must be assessed for acoustic protection include the Outdoor Living Area (OLA) and the Outdoor Plane of Window (POW).

These locations are defined as:

- **Outdoor Living Area (OLA):** The outdoor living areas provide for quiet enjoyment of the outdoor environment during the daytime period (i.e. backyards, terraces and decks). The proposed at grade OLA noise levels are analyzed at 3.0m from the rear of the building, 1.5m above grade.
- **Plane of Window (POW):** The plane of window is defined as the indoor living space where the sound levels will affect the living room area during daytime hours and bedrooms during night time hours. POW noise levels are analyzed inside the building, 1.5m above the finished floor of each floor.

The following table summarizes the ENCG sound level criteria pertinent to the subject site. Excerpts from the ENCG are included in **Appendix B** for reference.

**Table 1: Sound Level Criteria**

| Type of Space  | Time Period  | Leq (dBA) |
|--|--------------|-----------|
|  |              | Roadways  |
| Outdoor Living Area (OLA)  | 7:00 - 23:00 | 55        |
| Plane of Window (POW):<br>Residential Living/Dining Areas                    | 7:00 - 23:00 | 45        |
|  | 23:00 - 7:00 | 45        |
| Plane of Window (POW):<br>Residential Sleeping quarters                      | 7:00 - 23:00 | 45        |
|  | 23:00 - 7:00 | 40        |
| Plane of Window (POW):<br>General Offices, reception<br>areas, retail stores | 7:00 - 23:00 | 50        |

### 2.2 Alternatives for Noise Attenuation Measures

When sound levels are predicted to exceed the sound level criteria, a combination of attenuation measures and warning clauses are recommended by the City of Ottawa and the MOE to modify the development environment.

These attenuation measures may include any or all of the following:

- Distance setback with soft ground;
- Insertion of noise insensitive land uses between the source and sensitive receptor;
- Orientation of building to provide sheltered zones;
- Construction of sound or acoustic barriers;
- Installation of air conditioning and ventilation; and
- Enhanced construction techniques and construction quality.

### 2.2.1 Noise Barrier

When noise levels exceed 60 dBA in the Outdoor Living Area, control measures (barriers) are required to reduce the Leq to below 60 dBA and as close to 55 dBA as technically, economically and administratively feasible.

The noise barriers are to be compliant with the City standard for noise barriers and have the following characteristics:

- Minimum height of 2.2m;
- Situated 0.30m inside the private property line;
- A surface mass density not less than 20kg/sq.m; and
- No holes or gaps.

### 2.2.2 Ventilation Requirements

A forced air heating system with provision for a central air conditioning system is required if the plane of window daytime noise levels are between 55 dBA and 65 dBA and/or the night time noise levels are between 50 dBA and 60 dBA.

The installation of a central air conditioning system is required when the daytime noise level exceeds 65 dBA and/or the night time noise level exceeds 60 dBA.

### 2.2.3 Building Component Assessment

When plane of window noise levels exceeds 65 dBA (daytime) or 60 dBA (night time) the exterior cladding system of the building envelope must be acoustically assessed to ensure indoor sound criteria are achieved. This includes analysis of the exterior wall, door, and/or glazing system specifications as appropriate.

The NRC research *Acoustic Insulation Factor: A Rating for the Insulation of Buildings against Noise* (June 1980, JD Quirt) is used to assess the building components and the required acoustic insulation factor (AIF). This method is recognized by the City of Ottawa.

The required AIF is based on the Outside Leq, Indoor Leq required, and the number of exterior façade components.

Minimum Required AIF = Outside Leq – Indoor Leq + 10 log<sub>10</sub> (Number of Components) + 2dB

Where, N = Number of components (walls, windows and roof);

L = Sound Level expressed on a common decibel scale.

### 2.2.4 Warning Clauses

When predicted noise levels exceed the specified criteria, the City of Ottawa and the MOE recommend warning clauses be registered as a notice on title and incorporated into the lease/rental/sale agreements to warn potential purchaser/buyers/tenants of the possible elevated noise levels.

The following typical warning clauses are extracted from Section C8.1 of the MOE NPC-300 document.

#### **Warning Clause Type A**

“Purchasers/tenants are advised that sound levels due to increasing road traffic may occasionally interfere with some activities of the dwelling occupants as the sound levels exceed the City’s and the Ministry of the Environment’s noise criteria.”

#### **Warning Clause Type B**

“Purchasers/tenants are advised that despite the inclusion of noise control features in the development and within the building units, sound levels due to increasing road traffic may on occasion interfere with some activities of the dwelling occupants as the sound levels exceed the City’s and the Ministry of the Environment’s noise criteria.”

#### **Warning Clause Type C**

“This dwelling unit has been designed with the provision for adding central air conditioning at the occupant’s discretion. Installation of central air conditioning by the occupant will allow windows and exterior doors to remain closed, thereby ensuring that the indoor sound levels are within the City’s and the Ministry of the Environment’s noise criteria.”

#### **Warning Clause Type D**

“This dwelling unit has been supplied with a central air conditioning system which will allow windows and exterior doors to remain closed, thereby ensuring that the indoor sound levels are within the City’s and the Ministry of the Environment’s noise criteria.”

### 2.2.5 Summary of Noise Attenuation Measure Requirements

**Table 2** summarizes the required noise attenuation measure and warning clauses should sound criteria be exceeded. Excerpts from the MOE NPC-300 document are included in **Appendix B** for reference.

**Table 2: Noise Attenuation Measure Requirements**

| Assessment Location               | L <sub>eq</sub> (dBA) | Outdoor Control Measures   | Indoor Control Measures  |   | Warning Clause  |
|-----------------------------------|-----------------------|--|--|---|---|
|                                   |                       |  | Ventilation Requirements                                       | Building Components   |   |
| Outdoor Living Area (OLA)         | Less than 55          | None required  | N/A  | N/A   | None required   |
|                                   | Between 55 and 60     | Control measures (barriers) may not be required but should be considered | N/A  | N/A   | Required if resultant L <sub>eq</sub> exceeds 55 dBA Type A |
|                                   | More than 60          | Barriers required  | N/A  | N/A   | Required if resultant L <sub>eq</sub> exceeds 55 dBA Type B |
| Plane of Living Room Window (POW) | Less than 55          | N/A  | None Required  | None Required   | None Required   |
|                                   | Between 55 and 65     | N/A  | Forced air heating with provision for central air conditioning | None Required   | Required Type C   |
|                                   | More Than 65          | N/A  | Central Air Conditioning                                       | Acoustical performance of the windows and walls should be specified | Required Type D   |
| Plane of Bedroom Window (POW)     | Less than 50          | N/A  | None Required  | None Required   | None Required   |
|                                   | Between 50 and 60     | N/A  | Forced air heating with provision for central air conditioning | None Required   | Required Type C   |
|                                   | More than 60          | N/A  | Central Air Conditioning                                       | Acoustical performance of the windows and walls should be specified | Required Type D   |

### 3.0 NOISE SOURCES

The City of Ottawa Official Plan (Policy 4.8.6) and Environmental Noise Control Guidelines (ENCG) stipulate that a noise impact assessment is required when a noise sensitive development is within proximity to a surface transportation (road or rail), stationary, and aircraft noise sources.

Due to the site location, only roadway noise will be considered. The following distances to roadway noise sources are applicable to the subject site:

- Within 100m from the right-of-way of an existing arterial (Innes Road)
- Within 100m from the right-of-way of an existing collector (Pagé Road, south of Innes Road)

As per Table B1 of Appendix B of the ENCG, **Table 3** outlines the traffic parameters used to calculate the sound levels for the proposed residential units. Excerpts from the ENCG are included in **Appendix B** for reference.

**Table 3: Traffic and Roadway Parameters**

| Parameters                          | Innes Road <sup>[1]</sup> | Pagé Road          |
|-------------------------------------|---------------------------|--------------------|
| Road Classification                 | Arterial (4 Lane)         | Collector (2 Lane) |
| Annual Average Daily Traffic (AADT) | 35,000                    | 8,000              |
| Day/Night Split (%)                 | 92/8                      | 92/8               |
| Medium/Heavy Trucks (%)             | 7/5                       | 7/5                |
| Posted Speed                        | 60 km/hr                  | 40 km/hr           |

<sup>[1]</sup> Innes Road is classified as a transit priority corridor (with isolated measures), as per the City of Ottawa's Transportation Master Plan, Ultimate Network.

### 3.1 Modeling Results

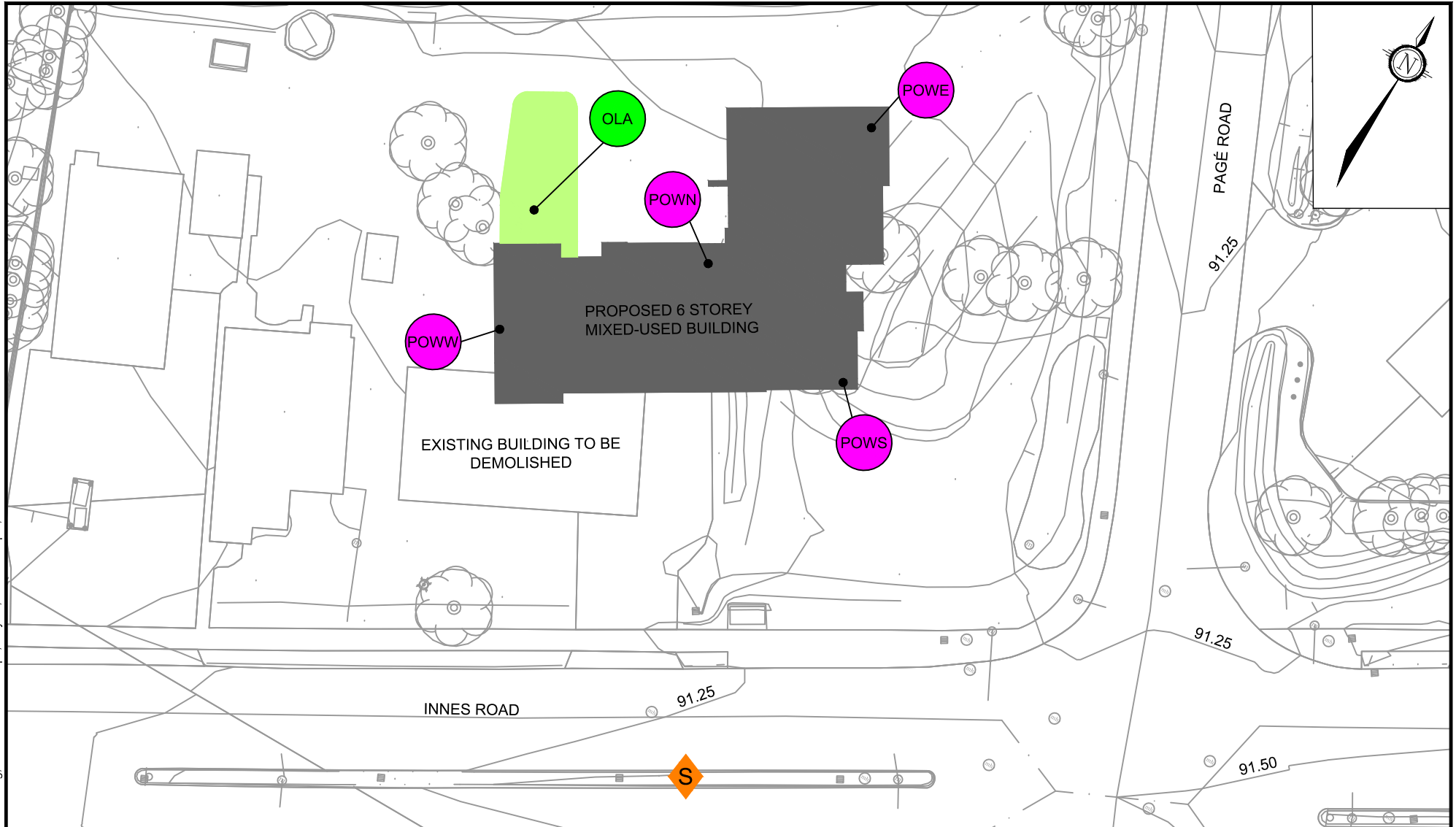
The noise levels for the development were analyzed using version 5.03 of the MOE STAMSON computer noise modelling program. Representative receiver locations are shown on the Noise Control Plan **Figure 2**.

For a complete list of data modeling input, refer to the STAMSON noise modeling files in **Appendix C**. The STAMSON results for the representative receivers are summarized in **Table 4** and **Table 5**.

**Table 4: Outdoor Living Area Noise Level Results**

| Receiver | Description            | Unattenuated Daytime Noise level (dBA) |
|----------|------------------------|--|
| OLA      | At grade amenity space | 54.9                                   |

M:\2017\117077\CAD\Design\Figures\Noise\117077 - NC.dwg, Sheet 8x11 Landscape, May 02, 2018 - 3:04pm, alavallee






# NOVATECH

Engineers, Planners & Landscape Architects  
 Suite 200, 240 Michael Cowpland Drive  
 Ottawa, Ontario, Canada K2M 1P6


Telephone (613) 254-9643  
 Facsimile (613) 254-5867  
 Website www.novatech-eng.com

## LEGEND

-  POW RECEIVER - PLANE OF WINDOW (POW)
-  OLA RECEIVER - OUTDOOR LIVING AREA (OLA)
-  S APPROXIMATE LOCATION OF NOISE SOURCE

3443 INNES ROAD

## NOISE CONTROL PLAN

SCALE 1 : 500 

|                  |               |                    |
|------------------|---------------|--------------------|
| DATE<br>MAY 2018 | JOB<br>117077 | FIGURE<br>FIGURE 2 |
|------------------|---------------|--------------------|

**Table 5: Plane of Window Noise Level Results**

| Receiver <sup>[2]</sup> | Description  | Unattenuated Daytime Noise level (dBA) | Unattenuated Nighttime Noise level <sup>[3]</sup> (dBA) |
|-------------------------|--|--|---|
| POWS1                   | Retail Unit (South face of building)                     | 69.8                                   | -   |
| POWE1                   | Retail Unit (East face of building)                      | 64.7                                   | -   |
| POWN1                   | Retail Unit (North face of building)                     | 49.4                                   | -   |
| POWW1                   | Retail Unit (West face of building)                      | 66.5                                   | -   |
| POWS6                   | Residential Unit on Sixth Floor (South face of building) | 69.8                                   | 62.2  |
| POWE6                   | Residential Unit on Sixth Floor (South face of building) | 64.7                                   | 57.1  |
| POWN6                   | Residential Unit on Sixth Floor (North face of building) | 54.0                                   | 46.4  |
| POWW6                   | Residential Unit on Sixth Floor (West face of building)  | 66.6                                   | 59.0  |

<sup>[2]</sup> Receiver number 1 and 6 refer to the corresponding floor number within the building

<sup>[3]</sup> Nighttime sound levels are not analyzed for general offices, reception area and retail stores. Therefore, sound level criteria has only been assessed between 7:00 - 23:00 for the retail units.

### 3.2 Proposed Attenuation Measures

#### 3.2.1 Outdoor Control Measures

Comparing the noise level results in **Table 4** to the ENCG sound level criteria specified for the outdoor living area summarized in **Table 1**, the predicted noise level is below the minimum threshold of 55dBA. Therefore, no attenuation measures are required for the outdoor living area.

### 3.2.2 Indoor Control Measures

Comparing the noise level results in **Table 5** to the ENCG sound level criteria specified for the plane of window summarized in **Table 1**, the predicted noise levels exceed the minimum (residential nighttime) threshold of **40dBA** and exceeds the minimum threshold of **50dBA** for the retail spaces fronting onto Innes Road. Therefore, attenuation measures are required for the indoor living areas. These attenuation measures include; ventilation requirements, building component assessment and warning clauses.

#### **Ventilation Requirements**

Warning clauses are required on the purchase and lease/rental/sale agreements relating to the requirement for central air conditioning for the residential and retail units.

Typical wording for the Type D warning clause: "This dwelling unit has been supplied with a central air conditioning system which will allow windows and exterior doors to remain closed, thereby ensuring that the indoor sound levels are within the City's and the Ministry of the Environment's noise criteria."

#### **Building Component Assessment**

To comply with the ENCG policies, the residential dwelling units will require a minimum acoustical insulation factor (AIF) rating to provide the indoor sound levels as shown in **Table 1**. The residential dwelling units (Floors 2-6) will require a minimum AIF rating of 31 to provide the appropriate indoor sound levels.

The acoustical insulation factor for a living room on the sixth floor (located on the south side of the building) is calculated as follows:

Three Building Components:  $AIF = 69.8 \text{ dBA} - 45 \text{ dBA} + 10\log_{10}(3) \text{ dBA} + 2\text{dBA} = 31.4\text{dBA}$

To comply with the ENCG policies, the retail units will require a minimum acoustical insulation factor (AIF) rating to provide the indoor sound levels as shown in **Table 1**. To comply with the City and MOE Guidelines, the main level of the building (retail space) will require a minimum AIF rating of 25 to provide the appropriate indoor sound levels.

Two Building Components:  $AIF = 69.8 \text{ dBA} - 50 \text{ dBA} + 10\log_{10}(2) \text{ dBA} + 2\text{dBA} = 24.8\text{dBA}$

Presented below are recommended building materials that provide the maximum (31) required AIF rating. These building materials are only suggestions and can be substituted by the builder with equivalent building materials that meet or exceed the AIF rating.

The ratio of floor area to window area and floor area to exterior wall are used to determine the typical assemblies for windows and exterior walls for the indoor living areas. Sample calculations and applicable worksheets are included in **Appendix D**.

#### **Wall Assemblies**

A wall with type EW1 composition has an AIF of 34 with an exterior wall to interior floor area of 50%; this meets the minimum requirement for 3 components.

#### **Window Assemblies**

A standard dual pane residential window section has 4mm glazing x 40mm air space x 4mm glazing, which has an AIF of 31 if located in a room with a window to floor area ratio of 80%.

The tables in **Appendix D** should be referenced by the builder to ensure that the selected building components exceed the minimum AIF rating for both the retail and residential units.

#### **4.0 CONCLUSIONS AND RECOMMENDATIONS**

To meet the City and Ministry of the Environment requirements for compliance with the City of Ottawa Environmental Noise Control Guidelines and the MOE Environmental Noise Guideline the following attenuation measures are required.

##### Outdoor Control Measures

The predicted noise level at the outdoor living areas (at grade amenity space) is below the minimum threshold of 55dBA. No attenuation measures are required for the outdoor living area.

##### Indoor Control Measures – Residential

The following minimum building requirements are recommended to reduce the residential indoor noise levels:

- Installation of air conditioning system.
- The installation of 'EW1' wall type assembly (or equivalent).
- The installation of window '4-40-4' type assemblies (or equivalent).

##### Indoor Control Measures – Retail

The following minimum building requirements are recommended to reduce the retail indoor noise levels:

- Installation of air conditioning system.
- The installation of 'EW1' wall type assembly (or equivalent).
- The installation of window '4-6-4' type assemblies (or equivalent).

The AIF tables should be referenced by the builder to ensure that the selected building components exceed the minimum AIF rating for both the retail and residential units.

##### Warning Clause

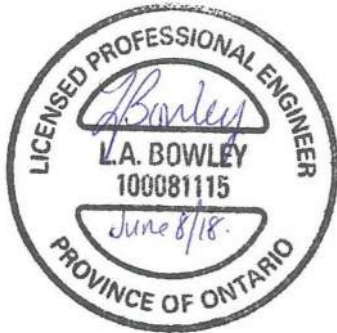
The following warning clauses should be incorporated into the purchase and lease/rental/sale agreements:

##### **For Indoor Living Area (Retail and Residential)**

*"This dwelling unit has been supplied with a central air conditioning system which will allow windows and exterior doors to remain closed, thereby ensuring that the indoor sound levels are within the sound level limits of the Municipality and the Ministry of the Environment."*

Prepared by:

**NOVATECH**



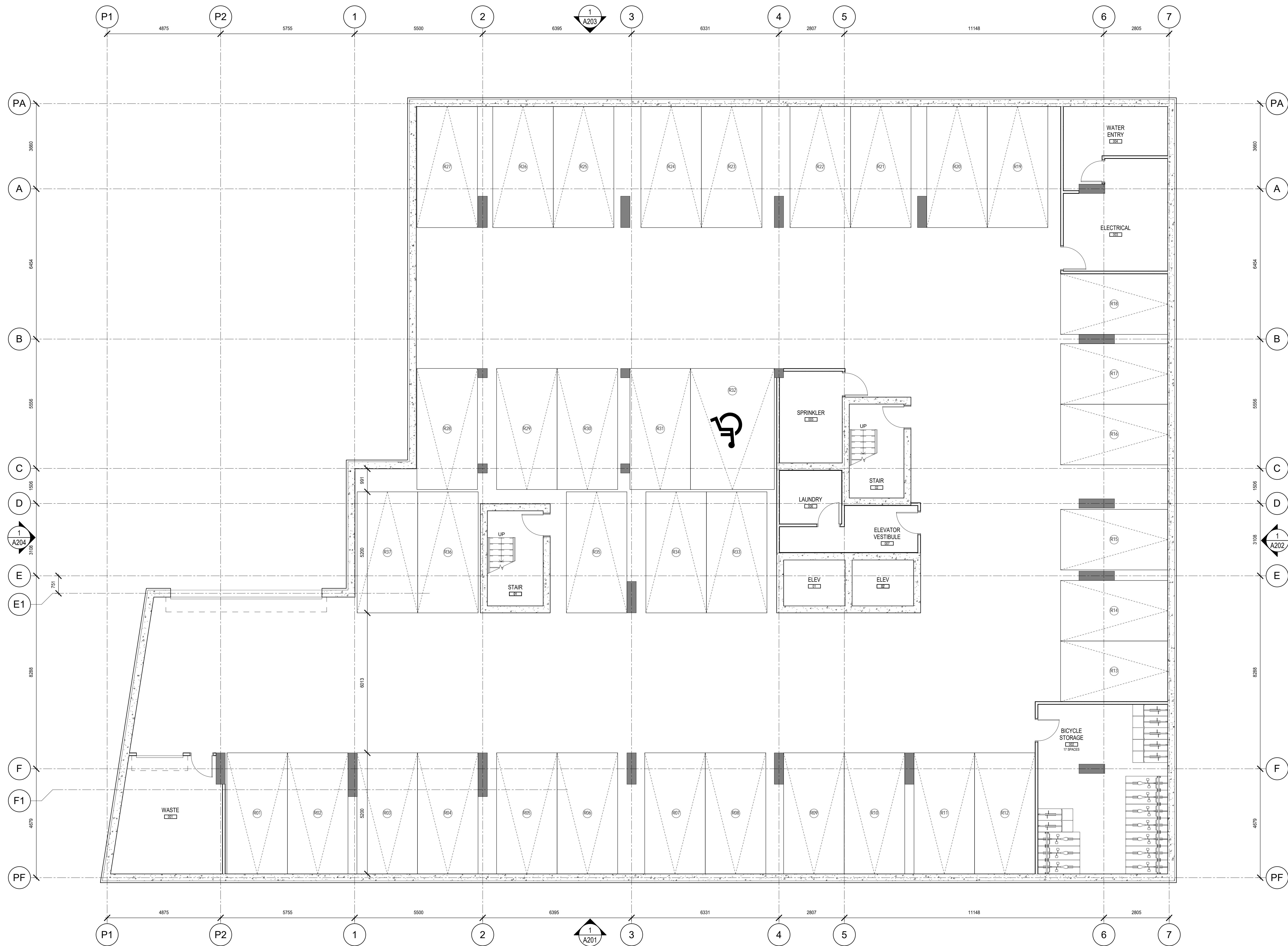
Lisa Bowley, P.Eng.  
Project Manager  
Land Development Engineering

**APPENDIX A**

---

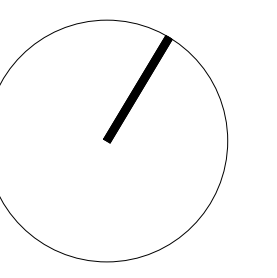
Elevation and Floor Plans





GENERAL ARCHITECTURAL NOTES:  
 1. This drawing is the property of the Architect and may not be reproduced or used without the expressed consent of the Architect.  
 2. Drawings are not to be scaled. The Contractor is responsible for checking and verifying all levels and dimensions and shall report all discrepancies to the Architect and obtain clarification prior to commencing work.  
 3. Upon notice in writing, the Architect will provide written clarification or supplementary information regarding the intent of the Contract Documents.  
 4. The Architectural Drawings are to be read in conjunction with all other Contract Documents including Project Manuals and the Structural, Mechanical and Electrical Drawings.  
 5. Positions of proposed or finished Mechanical or Electrical devices, fittings and fixtures are indicated on the Architectural Drawings. Locations shown on the Architectural Drawings shall govern over Mechanical and Electrical Drawings.  
 6. Mechanical and Electrical items not clearly located will be located as directed by the Architect.  
 7. These documents are not to be used for construction unless specifically noted for such purpose.

ISSUE RECORD



**project1 studio**

Project1 Studio Incorporated  
 (613.884.9339 | mail@project1studio.ca)

**3443 INNES**

3443 Innes Road  
 Orleans, ON

| PROJ | SCALE  | DRAWN | REVIEWED |
|------|--------|-------|----------|
| 1704 | 1 : 75 | JRKII | RMK      |

**LEVEL P1 FLOOR PLAN**

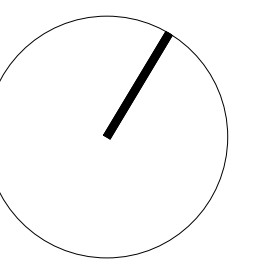
**A100**

GENERAL ARCHITECTURAL NOTES:  
 1. This drawing is the property of the Architect and may not be reproduced or used without the expressed consent of the Architect.  
 2. Drawings are not to be scaled. The Contractor is responsible for checking and verifying all levels and dimensions and shall report all discrepancies to the Architect and obtain clarification prior to commencing work.  
 3. Upon notice in writing, the Architect will provide written clarification or supplementary information regarding the intent of the Contract Documents.  
 4. The Architectural Drawings are to be read in conjunction with all other Contract Documents including Project Manuals and the Structural, Mechanical and Electrical Drawings.  
 5. Positions of proposed or finished Mechanical or Electrical devices, fittings and fixtures are indicated on the Architectural Drawings. Locations shown on the Architectural Drawings shall govern over Mechanical and Electrical Drawings.  
 6. Mechanical and Electrical items not clearly located will be located as directed by the Architect.  
 7. These documents are not to be used for construction unless specifically noted for such purpose.



1 LEVEL 01 FLOOR PLAN  
 A101 SCALE: 1 : 75

ISSUE RECORD



project1  
 studio

Project1 Studio Incorporated  
 (613.884.9339) | mail@project1studio.ca

3443 INNES

3443 Innes Road  
 Orleans, ON

| PROJ | SCALE  | DRAWN | REVIEWED |
|------|--------|-------|----------|
| 1704 | 1 : 75 | JRKII | RMK      |

LEVEL 01 FLOOR PLAN

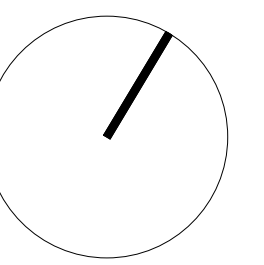
A101

GENERAL ARCHITECTURAL NOTES:  
 1. This drawing is the property of the Architect and may not be reproduced or used without the expressed consent of the Architect.  
 2. Drawings are not to be scaled. The Contractor is responsible for checking and verifying all levels and dimensions and shall report all discrepancies to the Architect and obtain clarification prior to commencing work.  
 3. Upon notice in writing, the Architect will provide written clarification or supplementary information regarding the intent of the Contract Documents.  
 4. The Architectural drawings are to be read in conjunction with all other Contract Documents including Project Manuals and the Structural, Mechanical and Electrical Drawings.  
 5. Positions of proposed or finished Mechanical or Electrical devices, fittings and fixtures are indicated on the Architectural Drawings. Locations shown on the Architectural Drawings shall govern over Mechanical and Electrical Drawings.  
 6. Mechanical and Electrical items not clearly located will be located as directed by the Architect.  
 7. These documents are not to be used for construction unless specifically noted for such purpose.



1 LEVEL 02 FLOOR PLAN  
 A102 SCALE: 1 : 75

ISSUE RECORD



project1  
 studio

Project1 Studio Incorporated  
 (613.884.9339 | mail@project1studio.ca)

3443 INNES

3443 Innes Road  
 Orleans, ON

| PROJ | SCALE  | DRAWN | REVIEWED |
|------|--------|-------|----------|
| 1704 | 1 : 75 | JRKII | RMK      |

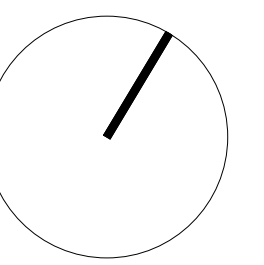
LEVEL 02 FLOOR PLAN

A102

GENERAL ARCHITECTURAL NOTES:  
 1. This drawing is the property of the Architect and may not be reproduced or used without the expressed consent of the Architect.  
 2. Drawings are not to be scaled. The Contractor is responsible for checking and verifying all levels and dimensions and shall report all discrepancies to the Architect and obtain clarification prior to commencing work.  
 3. Upon notice in writing, the Architect will provide written clarification or supplementary information regarding the intent of the Contract Documents.  
 4. The Architectural drawings are to be read in conjunction with all other Contract Documents including Project Manuals and the Structural, Mechanical and Electrical Drawings.  
 5. Positions of proposed or finished Mechanical or Electrical devices, fittings and fixtures are indicated on the Architectural Drawings. Locations shown on the Architectural Drawings shall govern over Mechanical and Electrical Drawings.  
 6. Mechanical and Electrical items not clearly located will be located as directed by the Architect.  
 7. These documents are not to be used for construction unless specifically noted for such purpose.



ISSUE RECORD



**project1  
studio**

Project1 Studio Incorporated  
 (613.884.9339 | mail@project1studio.ca)

**3443 INNES**

3443 Innes Road  
 Orleans, ON

| PROJ | SCALE  | DRAWN | REVIEWED |
|------|--------|-------|----------|
| 1704 | 1 : 75 | JRKII | RMK      |

**LEVEL 03 FLOOR PLAN**

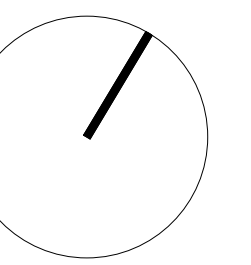
**A103**

GENERAL ARCHITECTURAL NOTES:  
 1. This drawing is the property of the Architect and may not be reproduced or used without the expressed consent of the Architect.  
 2. Drawings are not to be scaled. The Contractor is responsible for checking and verifying all levels and dimensions and shall report all discrepancies to the Architect and obtain clarification prior to commencing work.  
 3. Upon notice in writing, the Architect will provide written clarification or supplementary information regarding the intent of the Contract Documents.  
 4. The Architectural drawings are to be read in conjunction with all other Contract Documents including Project Manuals and the Structural, Mechanical and Electrical Drawings.  
 5. Positions of proposed or finished Mechanical or Electrical devices, fittings and fixtures are indicated on the Architectural Drawings. Locations shown on the Architectural Drawings shall govern over Mechanical and Electrical Drawings.  
 6. Mechanical and Electrical items not clearly located will be located as directed by the Architect.  
 7. These documents are not to be used for construction unless specifically noted for such purpose.



1 LEVEL 04 FLOOR PLAN  
 A104 SCALE: 1 : 75

ISSUE RECORD



project1  
 studio

Project1 Studio Incorporated  
 (613.884.9339 | mail@project1studio.ca)

3443 INNES

3443 Innes Road  
 Orleans, ON

| PROJ | SCALE  | DRAWN | REVIEWED |
|------|--------|-------|----------|
| 1704 | 1 : 75 | JRKII | RMK      |

LEVEL 04 FLOOR PLAN

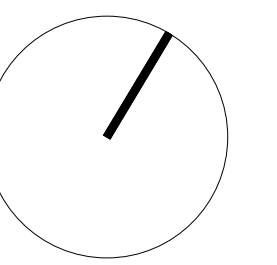
A104

GENERAL ARCHITECTURAL NOTES:  
 1. This drawing is the property of the Architect and may not be reproduced or used without the expressed consent of the Architect.  
 2. Drawings are not to be scaled. The Contractor is responsible for checking and verifying all levels and dimensions and shall report all discrepancies to the Architect and obtain clarification prior to commencing work.  
 3. Upon notice in writing, the Architect will provide written clarification or supplementary information regarding the intent of the Contract Documents.  
 4. The Architectural Drawings are to be read in conjunction with all other Contract Documents including Project Manuals and the Structural, Mechanical and Electrical Drawings.  
 5. Positions of proposed or finished Mechanical or Electrical devices, fittings and fixtures are indicated on the Architectural Drawings. Locations shown on the Architectural Drawings shall govern over Mechanical and Electrical Drawings.  
 6. Mechanical and Electrical items not clearly located will be located as directed by the Architect.  
 7. These documents are not to be used for construction unless specifically noted for such purpose.



1 LEVEL 05 FLOOR PLAN  
 A105 SCALE: 1 : 75

ISSUE RECORD



project1  
 studio

Project1 Studio Incorporated  
 (613.884.9339 | mail@project1studio.ca

3443 INNES

3443 Innes Road  
 Orleans, ON

| PROJ | SCALE  | DRAWN | REVIEWED |
|------|--------|-------|----------|
| 1704 | 1 : 75 | JRKII | RMK      |

LEVEL 05 FLOOR PLAN

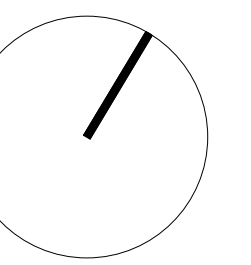
A105

GENERAL ARCHITECTURAL NOTES:  
 1. This drawing is the property of the Architect and may not be reproduced or used without the expressed consent of the Architect.  
 2. Drawings are not to be scaled. The Contractor is responsible for checking and verifying all levels and dimensions and shall report all discrepancies to the Architect and obtain clarification prior to commencing work.  
 3. Upon notice in writing, the Architect will provide written clarification or supplementary information regarding the intent of the Contract Documents.  
 4. The Architectural Drawings are to be read in conjunction with all other Contract Documents including Project Manuals and the Structural, Mechanical and Electrical Drawings.  
 5. Positions of proposed or finished Mechanical or Electrical devices, fittings and fixtures are indicated on the Architectural Drawings. Locations shown on the Architectural Drawings shall govern over Mechanical and Electrical Drawings.  
 6. Mechanical and Electrical items not clearly located will be located as directed by the Architect.  
 7. These documents are not to be used for construction unless specifically noted for such purpose.



1 LEVEL 06 FLOOR PLAN  
 A106 SCALE: 1 : 75

ISSUE RECORD



project1  
 studio

Project1 Studio Incorporated  
 (613.884.9339 | mail@project1studio.ca)

3443 INNES

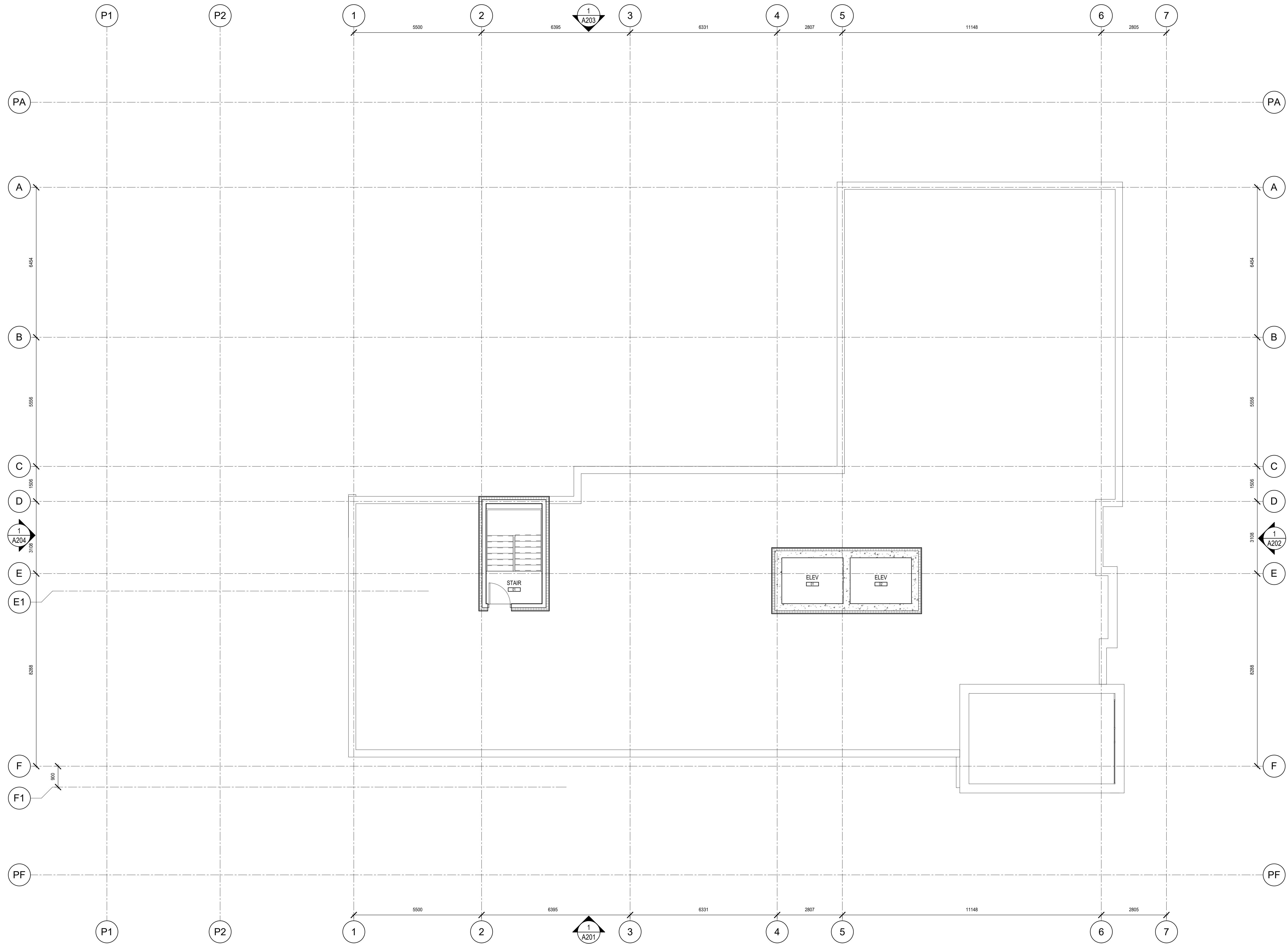
3443 Innes Road  
 Orleans, ON

| PROJ | SCALE  | DRAWN | REVIEWED |
|------|--------|-------|----------|
| 1704 | 1 : 75 | JRKII | RMK      |

LEVEL 06 FLOOR PLAN

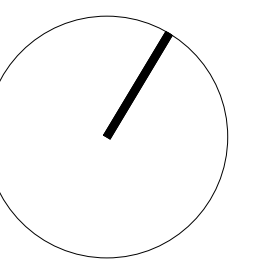
A106

GENERAL ARCHITECTURAL NOTES:  
 1. This drawing is the property of the Architect and may not be reproduced or used without the expressed consent of the Architect.  
 2. Drawings are not to be scaled. The Contractor is responsible for checking and verifying all levels and dimensions and shall report all discrepancies to the Architect and obtain clarification prior to commencing work.  
 3. Upon notice in writing, the Architect will provide written clarification or supplementary information regarding the intent of the Contract Documents.  
 4. The Architectural Drawings are to be read in conjunction with all other Contract Documents including Project Manuals and the Structural, Mechanical and Electrical Drawings.  
 5. Positions of proposed or finished Mechanical or Electrical devices, fittings and fixtures are indicated on the Architectural Drawings. Locations shown on the Architectural Drawings shall govern over Mechanical and Electrical Drawings.  
 6. Mechanical and Electrical items not clearly located will be located as directed by the Architect.  
 7. These documents are not to be used for construction unless specifically noted for such purpose.



1 ROOF PLAN  
 A107 SCALE: 1 : 75

ISSUE RECORD



**project1  
 studio**

Project1 Studio Incorporated  
 (613.884.9339) | mail@project1studio.ca

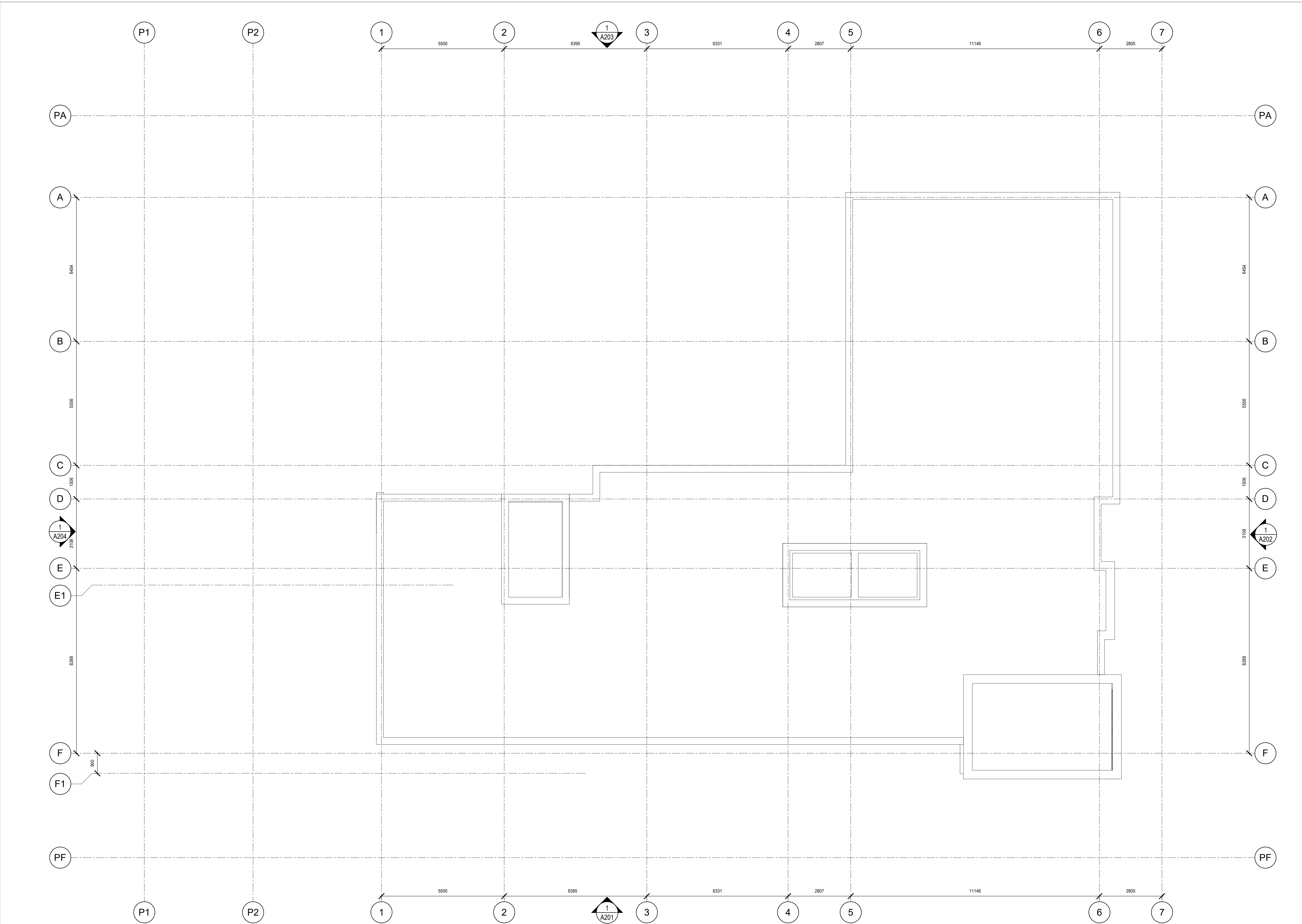
**3443 INNES**

3443 Innes Road  
 Orleans, ON

| PROJ | SCALE  | DRAWN | REVIEWED |
|------|--------|-------|----------|
| 1704 | 1 : 75 | JRKII | RMK      |

**ROOF PLAN**

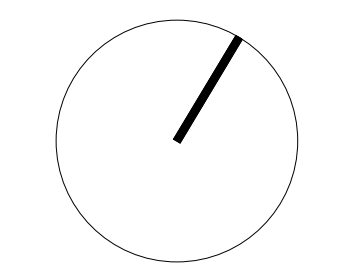
**A107**



GENERAL ARCHITECTURAL NOTES:

1. This drawing is the property of the Architect and may not be reproduced or used without the expressed consent of the Architect.
2. Drawings are not to be scaled. The Contractor is responsible for checking and verifying all levels and dimensions and shall report all discrepancies to the Architect and obtain clarification prior to commencing work.
3. Upon notice in writing, the Architect will provide written clarification or supplementary information regarding the intent of the Contract Documents.
4. The Architectural Drawings are to be read in conjunction with all other Contract Documents including Project Manuals and the Structural, Mechanical and Electrical Drawings.
5. Positions of proposed or finished Mechanical or Electrical devices, fittings and fixtures are indicated on the Architectural Drawings. Locations shown on the Architectural Drawings shall govern over Mechanical and Electrical Drawings.
6. Mechanical and Electrical items not clearly located will be located as directed by the Architect.
7. These documents are not to be used for construction unless specifically noted for such purpose.

ISSUE RECORD



**project1 studio**

Project1 Studio Incorporated  
 (613.884.3939 | email@project1studio.ca)

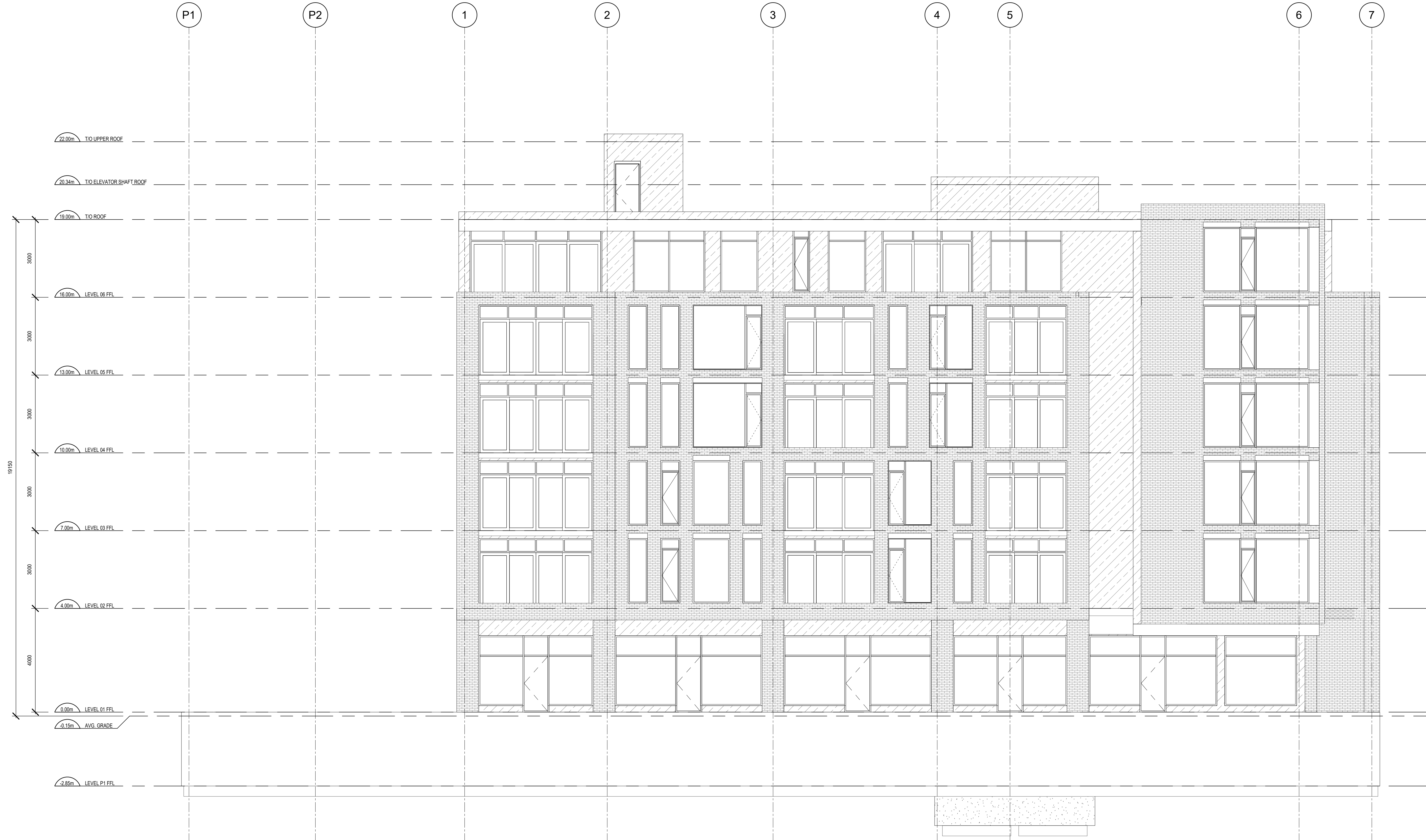
**3443 INNES**  
 3443 Innes Road  
 Orleans, ON

| PROJ | SCALE  | DRAWN | REVIEWED |
|------|--------|-------|----------|
| 1704 | 1 : 75 | JRKII | RMK      |

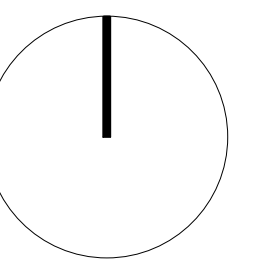
UPPER ROOF PLAN

**A108**

GENERAL ARCHITECTURAL NOTES:  
 1. This drawing is the property of the Architect and may not be reproduced or used without the expressed consent of the Architect.  
 2. Drawings are not to be scaled. The Contractor is responsible for checking and verifying all levels and dimensions and shall report all discrepancies to the Architect and obtain clarification prior to commencing work.  
 3. Upon notice in writing, the Architect will provide written clarification or supplementary information regarding the intent of the Contract Documents.  
 4. The Architectural Drawings are to be read in conjunction with all other Contract Documents including Project Manuals and the Structural, Mechanical and Electrical Drawings.  
 5. Positions of proposed or finished Mechanical or Electrical devices, fittings and fixtures are indicated on the Architectural Drawings. Locations shown on the Architectural Drawings shall govern over Mechanical and Electrical Drawings. Mechanical and Electrical items not clearly located will be located as directed by the Architect.  
 6. These documents are not to be used for construction unless specifically noted for such purpose.



ISSUE RECORD



**project1**  
 studio

Project1 Studio Incorporated  
 (613.884.9339) | mail@project1studio.ca

**3443 INNES**

3443 Innes Road  
 Orleans, ON

| PROJ | SCALE  | DRAWN | REVIEWED |
|------|--------|-------|----------|
| 1704 | 1 : 75 | JRKII | RMK      |

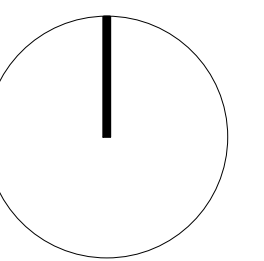
**SOUTH ELEVATION**

**A201**

GENERAL ARCHITECTURAL NOTES:  
 1. This drawing is the property of the Architect and may not be reproduced or used without the expressed consent of the Architect.  
 2. Drawings are not to be scaled. The Contractor is responsible for checking and verifying all levels and dimensions and shall report all discrepancies to the Architect and obtain clarification prior to commencing work.  
 3. Upon notice in writing, the Architect will provide written clarification or supplementary information regarding the intent of the Contract Documents.  
 4. The Architectural Drawings are to be read in conjunction with all other Contract Documents including Project Manuals and the Structural, Mechanical and Electrical Drawings.  
 5. Positions of proposed or finished Mechanical or Electrical devices, fittings and fixtures are indicated on the Architectural Drawings. Locations shown on the Architectural Drawings shall govern over Mechanical and Electrical Drawings. Mechanical and Electrical items not clearly located will be located as directed by the Architect.  
 6. These documents are not to be used for construction unless specifically noted for such purpose.



ISSUE RECORD



project1  
 studio

Project1 Studio Incorporated  
 (613.884.9339 | mail@project1studio.ca)

3443 INNES

3443 Innes Road  
 Orleans, ON

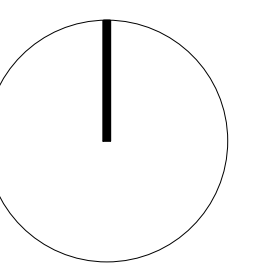
| PROJ | SCALE  | DRAWN | REVIEWED |
|------|--------|-------|----------|
| 1704 | 1 : 75 | JRKII | RMK      |

EAST ELEVATION

GENERAL ARCHITECTURAL NOTES:  
 1. This drawing is the property of the Architect and may not be reproduced or used without the expressed consent of the Architect.  
 2. Drawings are not to be scaled. The Contractor is responsible for checking and verifying all levels and dimensions and shall report all discrepancies to the Architect and obtain clarification prior to commencing work.  
 3. Upon notice in writing, the Architect will provide written clarification or supplementary information regarding the intent of the Contract Documents.  
 4. The Architectural Drawings are to be read in conjunction with all other Contract Documents including Project Manuals and the Structural, Mechanical and Electrical Drawings.  
 5. Positions of proposed or finished Mechanical or Electrical devices, fittings and fixtures are indicated on the Architectural Drawings. Locations shown on the Architectural Drawings shall govern over Mechanical and Electrical Drawings.  
 6. Mechanical and Electrical items not clearly located will be located as directed by the Architect.  
 7. These documents are not to be used for construction unless specifically noted for such purpose.



ISSUE RECORD



**project1**  
 studio

Project1 Studio Incorporated  
 (613.884.3939) | mail@project1studio.ca

**3443 INNES**

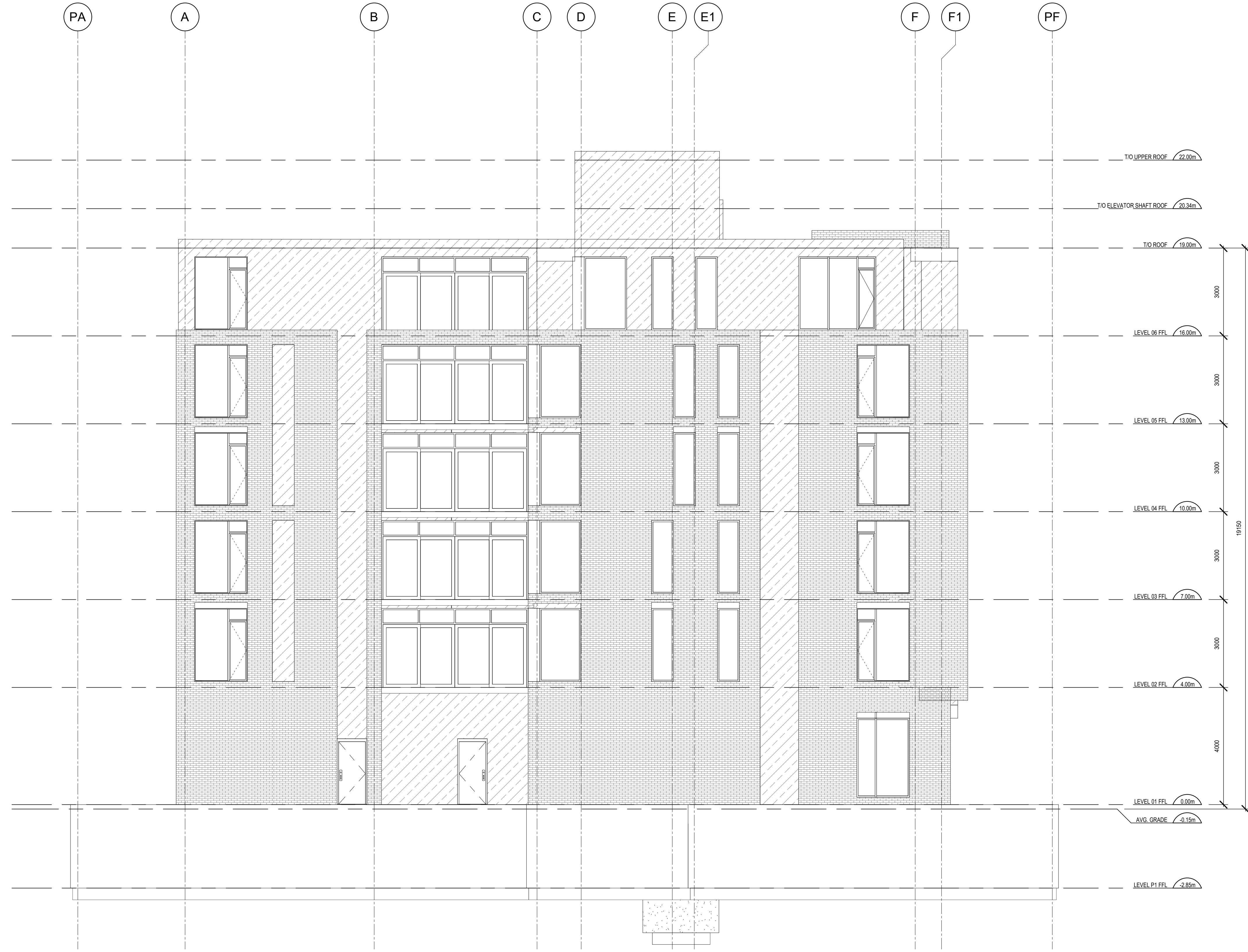
3443 Innes Road  
 Orleans, ON

| PROJ | SCALE  | DRAWN | REVIEWED |
|------|--------|-------|----------|
| 1704 | 1 : 75 | JRKII | RMK      |

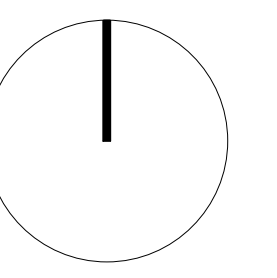
**NORTH ELEVATION**

**A203**

GENERAL ARCHITECTURAL NOTES:  
 1. This drawing is the property of the Architect and may not be reproduced or used without the expressed consent of the Architect.  
 2. Drawings are not to be scaled. The Contractor is responsible for checking and verifying all levels and dimensions and shall report all discrepancies to the Architect and obtain clarification prior to commencing work.  
 3. Upon notice in writing, the Architect will provide written clarification or supplementary information regarding the intent of the Contract Documents.  
 4. The Architectural Drawings are to be read in conjunction with all other Contract Documents including Project Manuals and the Structural, Mechanical and Electrical Drawings.  
 5. Positions of proposed or finished Mechanical or Electrical devices, fittings and fixtures are indicated on the Architectural Drawings. Locations shown on the Architectural Drawings shall govern over Mechanical and Electrical Drawings. Mechanical and Electrical items not clearly located will be located as directed by the Architect.  
 6. These documents are not to be used for construction unless specifically noted for such purpose.



ISSUE RECORD



**project1**  
 studio

Project1 Studio Incorporated  
 (613.884.9399) | mail@project1studio.ca

**3443 INNES**

3443 Innes Road  
 Orleans, ON

| PROJ | SCALE  | DRAWN | REVIEWED |
|------|--------|-------|----------|
| 1704 | 1 : 75 | JRKII | RMK      |

**WEST ELEVATION**

**A204**

**APPENDIX B**

---

Environmental Noise Control Guidelines Excerpts

# **ENVIRONMENTAL NOISE CONTROL GUIDELINES: Introduction and Glossary**

January 2016

**Table 2.2a: Sound Level Limit for Outdoor Living Areas - Road and Rail**  
(from NPC-300, 2013 Table C-1)

| Time Period            | Required Leq (16) (dBA) |
|------------------------|-------------------------|
| 16-hour, 07:00 – 23:00 | 55                      |

**Table 2.2b: Sound Level Limit for Indoor Living Areas Road and Rail**  
(from NPC-300, 2013 Table C-2)

| Type of Space  | Time Period   | Required Leq (dBA) |      |
|--|---------------|--------------------|------|
|  |               | Road               | Rail |
| Living/dining, den areas of residences, hospitals, nursing homes, schools, daycare centres, etc.           | 07:00 – 23:00 | 45                 | 40   |
| Living/dining, den areas of residences, hospitals, nursing homes, etc. (except schools or daycare centres) | 23:00 – 07:00 | 45                 | 40   |
| Sleeping quarters  | 07:00 – 23:00 | 45                 | 40   |
|  | 23:00 – 07:00 | 40                 | 35   |

The Province also provides for supplementary indoor sound level limits for land uses not generally considered noise sensitive (see Table 2.2c below). These good practice design objectives should be addressed in any noise study prepared for the City. These supplementary sound level limits are based on the windows and doors to an indoor space being closed.

**Table 2.2c: Supplementary Sound Level Limits for Indoor Spaces - Road and Rail (adapted from NPC-300 Table C-9)**

| Type of Space   | Time Period                    | Required Leq (dBA) |      |
|---|--------------------------------|--------------------|------|
|   |                                | Road               | Rail |
| General offices, reception areas, retail stores, etc.   | 16 hours between 07:00 – 23:00 | 50                 | 45   |
| Theatres, places of worship, libraries, individual or semi-private offices, conference rooms, reading rooms, etc. | 16 hours between 07:00 – 23:00 | 45                 | 40   |
| Sleeping quarters of hotels/motels  | 8 hours between 23:00 – 07:00  | 45                 | 40   |
| Sleeping quarters of residences, hospitals, nursing/retirement homes, etc.  | 8 hours between 23:00 – 07:00  | 40                 | 35   |

## Appendix B: Table of Traffic and Road Parameters To Be Used For Sound Level Predictions

**Table B1 Traffic And Road Parameters To Be Used For Sound Level Predictions**

| Row Width (m)   | Implied Roadway Class  | AADT Vehicles/Day | Posted Speed Km/Hr | Day/Night Split % | Medium Trucks % | Heavy Trucks % <sup>1</sup> |
|-----------------|--|-------------------|--------------------|-------------------|-----------------|-----------------------------|
| NA <sup>2</sup> | Freeway, Queensway, Highway  | 18,333 per lane   | 100                | 92/8              | 7               | 5                           |
| 37.5-44.5       | 6-Lane Urban Arterial-Divided (6 UAD)                                  | 50,000            | 50-80              | 92/8              | 7               | 5                           |
| 34-37.5         | 4-Lane Urban Arterial-Divided (4-UAD)                                  | 35,000            | 50-80              | 92/8              | 7               | 5                           |
| 23-34           | 4-Lane Urban Arterial-Undivided (4-UAU)                                | 30,000            | 50-80              | 92/8              | 7               | 5                           |
| 23-34           | 4-Lane Major Collector (4-UMCU)  | 24,000            | 40-60              | 92/8              | 7               | 5                           |
| 30-35.5         | 2-Lane Rural Arterial (2-RAU)  | 15,000            | 50-80              | 92/8              | 7               | 5                           |
| 20-30           | 2-Lane Urban Arterial (2-UAU)  | 15,000            | 50-80              | 92/8              | 7               | 5                           |
| 20-30           | 2-Lane Major Collector (2-UMCU)  | 12,000            | 40-60              | 92/8              | 7               | 5                           |
| 30-35.5         | 2-Lane Outer Rural Arterial (near the extremities of the City) (2-RAU) | 10,000            | 50-80              | 92/8              | 7               | 5                           |
| 20-30           | 2-Lane Urban Collector (2-UCU)   | 8,000             | 40-50              | 92/8              | 7               | 5                           |

<sup>1</sup> The MOE Vehicle Classification definitions should be used to estimate automobiles, medium trucks and heavy trucks.

<sup>2</sup> The number of lanes is determined by the future mature state of the roadway.

# Environmental Noise Guideline

Stationary and Transportation Sources –  
Approval and Planning

Publication NPC-300

**Table C-10**  
**Supplementary Indoor Aircraft Noise Limits**  
**(Applicable over 24-hour period)**

| Type of Space   | Indoor NEF/NEP* |
|---|-----------------|
| General offices, reception areas, retail stores, etc.   | 15              |
| Individual or semi-private offices, conference rooms, etc.  | 10              |
| Living/dining areas of residences, sleeping quarters of hotels/motels, theatres, libraries, schools, daycare centres, places of worship, etc. | 5               |
| Sleeping quarters of residences, hospitals, nursing/retirement homes, etc.  | 0               |

\* The indoor NEF/NEP values listed in Table C-10 are not obtained from NEF/NEP contour maps. The values are representative of the indoor sound levels and are used as assessment criteria for the evaluation of acoustical insulation requirements.

## C7 Noise Control Measures

The following sections provide MOE guidance for appropriate noise control measures. These sections constitute requirements that are applied to MOE approvals for stationary sources. This information is also provided as guidance which land use planning authorities may consider adopting.

The definition in Part A describes the various types and application of noise control measures. All the noise control measures described in the definition are appropriate to address the impact of noise of transportation sources (road, rail and aircraft) on planned sensitive land uses. Only some of the noise control measures described in the definition are appropriate to address the noise impact of stationary sources on planned sensitive land uses.

### C7.1 Road Noise Control Measures

#### C7.1.1 Outdoor Living Areas

If the 16-Hour Equivalent Sound Level,  $L_{eq}(16)$  in the OLA is greater than 55 dBA and less than or equal to 60 dBA, noise control measures may be applied to reduce the sound level to 55 dBA. If measures are not provided, prospective purchasers or tenants should be informed of potential noise problems by a warning clause Type A.

If the 16-Hour Equivalent Sound Level,  $L_{eq}(16)$  in the OLA is greater than 60 dBA, noise control measures should be implemented to reduce the level to 55 dBA. Only in cases where the required noise control measures are not feasible for technical, economic or administrative reasons would an excess above the limit (55 dBA) be acceptable with a warning clause Type B. In the above situations, any excess above the limit will not be acceptable if it exceeds 5 dBA.

## **C7.1.2 Plane of a Window – Ventilation Requirements**

### **C7.1.2.1 Daytime Period, 07:00 – 23:00 Hours**

Noise control measures may not be required if the  $L_{eq}$  (16) daytime sound level in the plane of a bedroom or living/dining room window is less than or equal to 55 dBA. If the sound level in the plane of a bedroom or living/dining room window is greater than 55 dBA and less than or equal to 65 dBA, the dwelling should be designed with a provision for the installation of central air conditioning in the future, at the occupant's discretion. Warning clause Type C is also recommended.

If the daytime sound level in the plane of a bedroom or living/dining room window is greater than 65 dBA, installation of central air conditioning should be implemented with a warning clause Type D. In addition, building components including windows, walls and doors, where applicable, should be designed so that the indoor sound levels comply with the sound level limits in Table C-2. The location and installation of the outdoor air conditioning device should comply with sound level limits of Publication NPC-216, Reference [32], and guidelines contained in Environmental Noise Guidelines for Installation of Residential Air Conditioning Devices, Reference [6], or should comply with other criteria specified by the municipality.

### **C7.1.2.2 Nighttime Period, 23:00 – 07:00 Hours**

Noise control measures may not be required if the  $L_{eq}$  (8) nighttime sound level in the plane of a bedroom or living/dining room window is less than or equal to 50 dBA. If the sound level in the plane of a bedroom or living/dining room window is greater than 50 dBA and less than or equal to 60 dBA, the dwelling should be designed with a provision for the installation of central air conditioning in the future, at the occupant's discretion. Warning clause Type C is also recommended.

If the nighttime sound level in the plane of a bedroom or living/dining room window is greater than 60 dBA, installation of central air conditioning should be implemented, with a warning clause Type D. In addition, building components including windows, walls and doors, where applicable, should be designed so that the indoor sound levels comply with the sound level limits in Table C-2. The location and installation of the outdoor air conditioning device should comply with sound level limits of Publication NPC-216, Reference [32], and guidelines contained in Environmental Noise Guidelines for Installation of Residential Air Conditioning Devices, Reference [6], or should comply with other criteria specified by the municipality.

## **C7.1.3 Indoor Living Areas – Building Components**

If the nighttime sound level outside the bedroom or living/dining room windows exceeds 60 dBA or the daytime sound level outside the bedroom or living/dining area windows exceeds 65 dBA, building components including windows, walls and doors, where applicable, should be designed so that the indoor sound levels comply with the

sound level limits in Table C-2. The acoustical performance of the building components (windows, doors and walls) should be specified.

## **C7.2 Rail Noise Control Measures**

### **C7.2.1 Outdoor Living Areas**

Whistle noise is not included in the determination of the outdoor daytime sound level due to railway trains. All the provisions of Section C7.1.1 apply also to noise control requirements for rail noise.

### **C7.2.2 Plane of a Window – Ventilation Requirements**

Whistle noise is not included in the determination of the sound level in the plane of a window. All the provisions of Section C7.1.2 apply also to noise control requirements for rail noise.

### **C7.2.3 Indoor Living Areas – Building Components**

The sound level,  $L_{eq}$ , during the daytime (16-hour) and nighttime (8-hour) periods is determined using the prediction method STEAM, Reference [34], immediately outside the dwelling envelope. Whistle noise is included in the determination of the sound level.

If the nighttime sound level outside the bedroom or living/dining room windows exceeds 55 dBA or the daytime sound level outside the bedroom or living/dining area windows exceeds 60 dBA, building components including windows, walls and doors, where applicable, need to be designed so that the indoor sound levels comply with the sound level limits in Table C-2. The acoustical performance of the building components (windows, doors and walls) needs to be specified.

In addition, the exterior walls of the first row of dwellings next to railway tracks are to be built to a minimum of brick veneer or masonry equivalent construction, from the foundation to the rafters when the rail traffic  $L_{eq}$  (24-hour), estimated at a location of a nighttime receptor, is greater than 60 dBA, and when the first row of dwellings is within 100 metres of the tracks.

## **C7.3 Combination of Road and Rail Noise**

The noise impact in the OLA and in the plane of a window, and the requirements for outdoor measures, ventilation measures and warning clauses, should be determined by combining road and rail traffic sound levels.

The assessment of the indoor sound levels and the resultant requirement for the acoustical descriptors of the building components should be done separately for road

In Class 4 areas, where windows for noise sensitive spaces are assumed to be closed, the use of central air conditioning may be acceptable if it forms an essential part of the overall building designs.

### **C7.9 Verification of Noise Control Measures**

It is recommended that the implementation of noise control measures be verified by qualified individuals with experience in environmental acoustics.

## **C8 Warning Clauses**

The use of warning clauses or easements in respect of noise are recommended when circumstances warrant. Noise warning clauses may be used to warn of potential annoyance due to an existing source of noise and/or to warn of excesses above the sound level limits. Direction on the use of warning clauses should be included in agreements that are registered on title to the lands in question. The warning clauses would be included in agreements of Offers of Purchase and Sale, lease/rental agreements and condominium declarations. Alternatively, the use of easements in respect of noise may be appropriate in some circumstances. Additional guidance on the use of noise warning clauses is provided in Section C7.1.1, Section C7.1.2.1, Section C7.1.2.2, Section C7.3 and Section C7.4.

### **C8.1 Transportation Sources**

The following warning clauses may be used individually or in combination:

TYPE A: (see Section C7.1.1)

“Purchasers/tenants are advised that sound levels due to increasing road traffic (rail traffic) (air traffic) may occasionally interfere with some activities of the dwelling occupants as the sound levels exceed the sound level limits of the Municipality and the Ministry of the Environment.”

TYPE B: (see Section C7.1.1 and Section C7.4)

“Purchasers/tenants are advised that despite the inclusion of noise control features in the development and within the building units, sound levels due to increasing road traffic (rail traffic) (air traffic) may on occasions interfere with some activities of the dwelling occupants as the sound levels exceed the sound level limits of the Municipality and the Ministry of the Environment.”

TYPE C: (see Section C7.1.2.1, Section C7.1.2.2 and Section C7.4)

“This dwelling unit has been designed with the provision for adding central air conditioning at the occupant’s discretion. Installation of

central air conditioning by the occupant in low and medium density developments will allow windows and exterior doors to remain closed, thereby ensuring that the indoor sound levels are within the sound level limits of the Municipality and the Ministry of the Environment.”

TYPE D: (see Section C7.1.2.1, Section C7.1.2.2 and Section C7.4)

“This dwelling unit has been supplied with a central air conditioning system which will allow windows and exterior doors to remain closed, thereby ensuring that the indoor sound levels are within the sound level limits of the Municipality and the Ministry of the Environment.”

## **C8.2 Stationary Sources**

It is not acceptable to use warning clauses in place of physical noise control measures to identify an excess over the MOE sound level limits. Warning clause (Type E) for stationary sources may identify a potential concern due to the proximity of the facility but it is not acceptable to justify exceeding the sound level limits.

TYPE E: (see Section C7.6)

“Purchasers/tenants are advised that due to the proximity of the adjacent industry (facility) (utility), noise from the industry (facility) (utility) may at times be audible.”

## **C8.3 Class 4 Area Notification**

TYPE F: (see Section B9.2 and Section C4.4.2)

“Purchasers/tenants are advised that sound levels due to the adjacent industry (facility) (utility) are required to comply with sound level limits that are protective of indoor areas and are based on the assumption that windows and exterior doors are closed. This dwelling unit has been supplied with a ventilation/air conditioning system which will allow windows and exterior doors to remain closed.”

## **APPENDIX C**

---

### STAMSON Noise Modelling Program Results

Filename: InnesOLA.te                    Time Period: Day/Night 16/8 hours  
**Description: OLA at Grade**

Road data, segment # 1: Innes (day/night)

-----  
Car traffic volume : 28336/2464 veh/TimePeriod \*  
Medium truck volume : 2254/196 veh/TimePeriod \*  
Heavy truck volume : 1610/140 veh/TimePeriod \*  
Posted speed limit : 60 km/h  
Road gradient : 1 %  
Road pavement : 1 (Typical asphalt or concrete)

\* Refers to calculated road volumes based on the following input:

24 hr Traffic Volume (AADT or SADT): 35000  
Percentage of Annual Growth : 0.00  
Number of Years of Growth : 0.00  
Medium Truck % of Total Volume : 7.00  
Heavy Truck % of Total Volume : 5.00  
Day (16 hrs) % of Total Volume : 92.00

Data for Segment # 1: Innes (day/night)

-----  
Angle1    Angle2                    : -90.00 deg    90.00 deg  
Wood depth                        : 0                    (No woods.)  
No of house rows                    : 1 / 1  
House density                        : 90 %  
Surface                              : 2                    (Reflective ground surface)  
Receiver source distance            : 52.00 / 52.00 m  
Receiver height                      : 1.50 / 4.50 m  
Topography                          : 2                    (Flat/gentle slope; with  
barrier)  
Barrier angle1                        : -47.00 deg    Angle2 : 90.00 deg  
Barrier height                        : 19.00 m  
Barrier receiver distance            : 3.00 / 3.00 m  
Source elevation                      : 91.25 m  
Receiver elevation                    : 92.00 m  
Barrier elevation                     : 92.00 m  
Reference angle                       : 0.00

Road data, segment # 2: Page (day/night)

```

-----
Car traffic volume : 6477/563   veh/TimePeriod *
Medium truck volume : 515/45    veh/TimePeriod *
Heavy truck volume  : 368/32    veh/TimePeriod *
Posted speed limit  : 40 km/h
Road gradient       : 1 %
Road pavement       : 1 (Typical asphalt or concrete)
  
```

\* Refers to calculated road volumes based on the following input:

```

24 hr Traffic Volume (AADT or SADT): 8000
Percentage of Annual Growth         : 0.00
Number of Years of Growth           : 0.00
Medium Truck % of Total Volume      : 7.00
Heavy Truck % of Total Volume       : 5.00
Day (16 hrs) % of Total Volume     : 92.00
  
```

Data for Segment # 2: Page (day/night)

```

-----
Angle1   Angle2           : -52.00 deg   -45.00 deg
Wood depth : 0 (No woods.)
No of house rows : 0 / 1
House density : 20 %
Surface : 2 (Reflective ground surface)
Receiver source distance : 60.00 / 60.00 m
Receiver height : 1.50 / 4.50 m
Topography : 2 (Flat/gentle slope; with barrier)
Barrier angle1 : -52.00 deg   Angle2 : -45.00 deg
Barrier height : 19.00 m
Barrier receiver distance : 3.00 / 3.00 m
Source elevation : 91.25 m
Receiver elevation : 92.00 m
Barrier elevation : 92.00 m
Reference angle : 0.00
  
```

Results segment # 1: Innes (day)

Source height = 1.50 m

Barrier height for grazing incidence

```

-----
Source      ! Receiver      ! Barrier      ! Elevation of
Height (m) ! Height (m) ! Height (m) ! Barrier Top (m)
-----+-----+-----+-----
          1.50 !          1.50 !          1.46 !          93.46
  
```

ROAD (54.03 + 47.56 + 0.00) = 54.91 dBA

```

Angle1 Angle2 Alpha RefLeq P.Adj D.Adj F.Adj W.Adj H.Adj B.Adj
SubLeq
  
```

```

-----
-90   -47   0.00  73.68   0.00  -5.40  -6.22   0.00  -8.03   0.00
54.03
-----
-47    90   0.00  73.68   0.00  -5.40  -1.19   0.00  -8.03   0.00
59.06
-47    90   0.00  73.68   0.00  -5.40  -1.19   0.00   0.00 -19.53
47.56
-----

```

Segment Leq : 54.91 dBA

Results segment # 2: Page (day)

Source height = 1.50 m

Barrier height for grazing incidence

```

-----
Source      ! Receiver      ! Barrier      ! Elevation of
Height (m) ! Height (m) ! Height (m) ! Barrier Top (m)
-----+-----+-----+-----
          1.50 !          1.50 !          1.46 !          93.46
-----

```

ROAD (0.00 + 23.83 + 0.00) = 23.83 dBA

Angle1 Angle2 Alpha RefLeq P.Adj D.Adj F.Adj W.Adj H.Adj B.Adj  
SubLeq

```

-----
-52   -45   0.00  63.96   0.00  -6.02 -14.10   0.00   0.00 -20.00
23.83
-----

```

Segment Leq : 23.83 dBA

Total Leq All Segments: 54.91 dBA

Results segment # 1: Innes (night)

Source height = 1.50 m

Barrier height for grazing incidence

```

-----
Source      ! Receiver      ! Barrier      ! Elevation of
Height (m) ! Height (m) ! Height (m) ! Barrier Top (m)
-----+-----+-----+-----
          1.50 !          4.50 !          4.28 !          96.28
-----

```

ROAD (46.43 + 40.06 + 0.00) = 47.33 dBA

Angle1 Angle2 Alpha RefLeq P.Adj D.Adj F.Adj W.Adj H.Adj B.Adj  
SubLeq

|       |     |      |       |      |       |       |      |       |        |
|-------|-----|------|-------|------|-------|-------|------|-------|--------|
| -90   | -47 | 0.00 | 66.08 | 0.00 | -5.40 | -6.22 | 0.00 | -8.03 | 0.00   |
| 46.43 |     |      |       |      |       |       |      |       |        |
| -47   | 90  | 0.00 | 66.08 | 0.00 | -5.40 | -1.19 | 0.00 | -8.03 | 0.00   |
| 51.46 |     |      |       |      |       |       |      |       |        |
| -47   | 90  | 0.00 | 66.08 | 0.00 | -5.40 | -1.19 | 0.00 | 0.00  | -19.44 |
| 40.06 |     |      |       |      |       |       |      |       |        |

Segment Leq : 47.33 dBA

Results segment # 2: Page (night)

Source height = 1.50 m

Barrier height for grazing incidence

| Source Height (m) | Receiver Height (m) | Barrier Height (m) | Elevation of Barrier Top (m) |
|-------------------|---------------------|--------------------|------------------------------|
| 1.50              | 4.50                | 4.31               | 96.31                        |

ROAD (0.00 + 16.24 + 0.00) = 16.24 dBA

| Angle1 | Angle2 | Alpha | RefLeq | P.Adj | D.Adj | F.Adj  | W.Adj | H.Adj | B.Adj  |
|--------|--------|-------|--------|-------|-------|--------|-------|-------|--------|
| -52    | -45    | 0.00  | 56.36  | 0.00  | -6.02 | -14.10 | 0.00  | -0.90 | 0.00   |
| 35.34  |        |       |        |       |       |        |       |       |        |
| -52    | -45    | 0.00  | 56.36  | 0.00  | -6.02 | -14.10 | 0.00  | 0.00  | -20.00 |
| 16.24  |        |       |        |       |       |        |       |       |        |

Segment Leq : 16.24 dBA

Total Leq All Segments: 47.33 dBA

**TOTAL Leq FROM ALL SOURCES (DAY) : 54.91**  
**(NIGHT) : 47.33**

Filename: POW1S.te                    Time Period: Day/Night 16/8 hours  
**Description: POW 1st floor south face**

Road data, segment # 1: Innes Road (day/night)

-----  
Car traffic volume : 28336/2464    veh/TimePeriod    \*  
Medium truck volume : 2254/196    veh/TimePeriod    \*  
Heavy truck volume : 1610/140    veh/TimePeriod    \*  
Posted speed limit : 60 km/h  
Road gradient : 1 %  
Road pavement : 1 (Typical asphalt or concrete)

\* Refers to calculated road volumes based on the following input:

24 hr Traffic Volume (AADT or SADT): 35000  
Percentage of Annual Growth : 0.00  
Number of Years of Growth : 0.00  
Medium Truck % of Total Volume : 7.00  
Heavy Truck % of Total Volume : 5.00  
Day (16 hrs) % of Total Volume : 92.00

Data for Segment # 1: Innes Road (day/night)

-----  
Angle1    Angle2                    : -90.00 deg    90.00 deg  
Wood depth : 0                    (No woods.)  
No of house rows : 0 / 0  
Surface : 2                    (Reflective ground surface)  
Receiver source distance : 36.90 / 36.90 m  
Receiver height : 1.50 / 1.50 m  
Topography : 3                    (Elevated; no barrier)  
Elevation : 0.75 m  
Reference angle : 0.00

Road data, segment # 2: Page Road (day/night)

-----  
Car traffic volume : 6477/563    veh/TimePeriod    \*  
Medium truck volume : 515/45    veh/TimePeriod    \*  
Heavy truck volume : 368/32    veh/TimePeriod    \*  
Posted speed limit : 40 km/h  
Road gradient : 1 %  
Road pavement : 1 (Typical asphalt or concrete)

\* Refers to calculated road volumes based on the following input:

24 hr Traffic Volume (AADT or SADT): 8000  
Percentage of Annual Growth : 0.00  
Number of Years of Growth : 0.00  
Medium Truck % of Total Volume : 7.00

Heavy Truck % of Total Volume : 5.00  
 Day (16 hrs) % of Total Volume : 92.00

Data for Segment # 2: Page Road (day/night)

```
-----
Angle1  Angle2      : -70.00 deg  -60.00 deg
Wood depth      :      0      (No woods.)
No of house rows :      0 / 0
Surface         :      2      (Reflective ground surface)
Receiver source distance : 30.00 / 30.00 m
Receiver height : 1.50 / 1.50 m
Topography      :      3      (Elevated; no barrier)
Elevation       : 0.75 m
Reference angle : 0.00
```

Results segment # 1: Innes Road (day)

Source height = 1.50 m

ROAD (0.00 + 69.77 + 0.00) = 69.77 dBA

| Angle1 | Angle2 | Alpha | RefLeq | P.Adj | D.Adj | F.Adj | W.Adj | H.Adj | B.Adj |
|--------|--------|-------|--------|-------|-------|-------|-------|-------|-------|
| -90    | 90     | 0.00  | 73.68  | 0.00  | -3.91 | 0.00  | 0.00  | 0.00  | 0.00  |

```
-----
SubLeq
---
69.77
-----
```

Segment Leq : 69.77 dBA

Results segment # 2: Page Road (day)

Source height = 1.50 m

ROAD (0.00 + 48.39 + 0.00) = 48.39 dBA

| Angle1 | Angle2 | Alpha | RefLeq | P.Adj | D.Adj | F.Adj  | W.Adj | H.Adj | B.Adj |
|--------|--------|-------|--------|-------|-------|--------|-------|-------|-------|
| -70    | -60    | 0.00  | 63.96  | 0.00  | -3.01 | -12.55 | 0.00  | 0.00  | 0.00  |

```
-----
SubLeq
---
48.39
-----
```

Segment Leq : 48.39 dBA

Total Leq All Segments: 69.80 dBA

Results segment # 1: Innes Road (night)

-----

Source height = 1.50 m

ROAD (0.00 + 62.17 + 0.00) = 62.17 dBA

| Angle1 | Angle2 | Alpha | RefLeq | P.Adj | D.Adj | F.Adj | W.Adj | H.Adj | B.Adj |
|--------|--------|-------|--------|-------|-------|-------|-------|-------|-------|
|--------|--------|-------|--------|-------|-------|-------|-------|-------|-------|

SubLeq

-----

|       |    |      |       |      |       |      |      |      |      |
|-------|----|------|-------|------|-------|------|------|------|------|
| ---   |    |      |       |      |       |      |      |      |      |
| -90   | 90 | 0.00 | 66.08 | 0.00 | -3.91 | 0.00 | 0.00 | 0.00 | 0.00 |
| 62.17 |    |      |       |      |       |      |      |      |      |

-----

---

Segment Leq : 62.17 dBA

Results segment # 2: Page Road (night)

-----

Source height = 1.50 m

ROAD (0.00 + 40.80 + 0.00) = 40.80 dBA

| Angle1 | Angle2 | Alpha | RefLeq | P.Adj | D.Adj | F.Adj | W.Adj | H.Adj | B.Adj |
|--------|--------|-------|--------|-------|-------|-------|-------|-------|-------|
|--------|--------|-------|--------|-------|-------|-------|-------|-------|-------|

SubLeq

-----

|       |     |      |       |      |       |        |      |      |      |
|-------|-----|------|-------|------|-------|--------|------|------|------|
| ---   |     |      |       |      |       |        |      |      |      |
| -70   | -60 | 0.00 | 56.36 | 0.00 | -3.01 | -12.55 | 0.00 | 0.00 | 0.00 |
| 40.80 |     |      |       |      |       |        |      |      |      |

-----

---

Segment Leq : 40.80 dBA

Total Leq All Segments: 62.20 dBA

**TOTAL Leq FROM ALL SOURCES (DAY) : 69.80**  
**(NIGHT) : 62.20**

Filename: RpowE1.te                    Time Period: Day/Night 16/8 hours  
**Description: Floor 1, East Face**

Road data, segment # 1: Innes Road (day/night)

-----  
Car traffic volume : 28336/2464    veh/TimePeriod  
Medium truck volume : 2254/196    veh/TimePeriod  
Heavy truck volume : 1610/140    veh/TimePeriod  
Posted speed limit : 60 km/h  
Road gradient : 1 %  
Road pavement : 1 (Typical asphalt or concrete)

Data for Segment # 1: Innes Road (day/night)

-----  
Angle1    Angle2                    : 2.00 deg    90.00 deg  
Wood depth : 0                    (No woods.)  
No of house rows : 0 / 0  
Surface : 2                    (Reflective ground surface)  
Receiver source distance : 59.00 / 59.00 m  
Receiver height : 1.50 / 1.50 m  
Topography : 1                    (Flat/gentle slope; no barrier)  
Reference angle : 0.00

Road data, segment # 2: Page Road (day/night)

-----  
Car traffic volume : 6477/563    veh/TimePeriod \*  
Medium truck volume : 515/45    veh/TimePeriod \*  
Heavy truck volume : 368/32    veh/TimePeriod \*  
Posted speed limit : 40 km/h  
Road gradient : 1 %  
Road pavement : 1 (Typical asphalt or concrete)

\* Refers to calculated road volumes based on the following input:

24 hr Traffic Volume (AADT or SADT): 8000  
Percentage of Annual Growth : 0.00  
Number of Years of Growth : 0.00  
Medium Truck % of Total Volume : 7.00  
Heavy Truck % of Total Volume : 5.00  
Day (16 hrs) % of Total Volume : 92.00

Data for Segment # 2: Page Road (day/night)

-----  
Angle1    Angle2                    : -76.00 deg    -66.00 deg  
Wood depth : 0                    (No woods.)  
No of house rows : 0 / 0  
Surface : 2                    (Reflective ground surface)  
Receiver source distance : 30.00 / 30.00 m

Receiver height : 1.50 / 1.50 m  
 Topography : 1 (Flat/gentle slope; no barrier)  
 Reference angle : 0.00

Results segment # 1: Innes Road (day)

-----  
 Source height = 1.50 m

ROAD (0.00 + 64.62 + 0.00) = 64.62 dBA

| Angle1 | Angle2 | Alpha | RefLeq | P.Adj | D.Adj | F.Adj | W.Adj | H.Adj | B.Adj |
|--------|--------|-------|--------|-------|-------|-------|-------|-------|-------|
| SubLeq |        |       |        |       |       |       |       |       |       |

-----  
 ---  
 2 90 0.00 73.68 0.00 -5.95 -3.11 0.00 0.00 0.00  
 64.62  
 -----  
 ---

Segment Leq : 64.62 dBA

Results segment # 2: Page Road (day)

-----  
 Source height = 1.50 m

ROAD (0.00 + 48.39 + 0.00) = 48.39 dBA

| Angle1 | Angle2 | Alpha | RefLeq | P.Adj | D.Adj | F.Adj | W.Adj | H.Adj | B.Adj |
|--------|--------|-------|--------|-------|-------|-------|-------|-------|-------|
| SubLeq |        |       |        |       |       |       |       |       |       |

-----  
 ---  
 -76 -66 0.00 63.96 0.00 -3.01 -12.55 0.00 0.00 0.00  
 48.39  
 -----  
 ---

Segment Leq : 48.39 dBA

Total Leq All Segments: 64.72 dBA

Results segment # 1: Innes Road (night)

-----  
 Source height = 1.50 m

ROAD (0.00 + 57.02 + 0.00) = 57.02 dBA

| Angle1 | Angle2 | Alpha | RefLeq | P.Adj | D.Adj | F.Adj | W.Adj | H.Adj | B.Adj |
|--------|--------|-------|--------|-------|-------|-------|-------|-------|-------|
| SubLeq |        |       |        |       |       |       |       |       |       |

-----  
 ---

2 90 0.00 66.08 0.00 -5.95 -3.11 0.00 0.00 0.00  
57.02

-----  
---  
Segment Leq : 57.02 dBA

Results segment # 2: Page Road (night)  
-----

Source height = 1.50 m

ROAD (0.00 + 40.80 + 0.00) = 40.80 dBA

| Angle1 | Angle2 | Alpha | RefLeq | P.Adj | D.Adj | F.Adj | W.Adj | H.Adj | B.Adj |
|--------|--------|-------|--------|-------|-------|-------|-------|-------|-------|
| SubLeq |        |       |        |       |       |       |       |       |       |

-----  
---  
-76 -66 0.00 56.36 0.00 -3.01 -12.55 0.00 0.00 0.00  
40.80

-----  
---  
Segment Leq : 40.80 dBA

Total Leq All Segments: 57.12 dBA

**TOTAL Leq FROM ALL SOURCES (DAY) : 64.72**  
**(NIGHT) : 57.12**

Filename: powN1.te                    Time Period: Day/Night 16/8 hours  
**Description: Floor 1, North Face**

Road data, segment # 1: Innes Road (day/night)

-----  
Car traffic volume : 28336/2464    veh/TimePeriod  
Medium truck volume : 2254/196    veh/TimePeriod  
Heavy truck volume : 1610/140    veh/TimePeriod  
Posted speed limit : 60 km/h  
Road gradient : 1 %  
Road pavement : 1 (Typical asphalt or concrete)

Data for Segment # 1: Innes Road (day/night)

-----  
Angle1    Angle2                    : -90.00 deg    90.00 deg  
Wood depth                        : 0            (No woods.)  
No of house rows                  : 0 / 0  
Surface                            : 2            (Reflective ground surface)  
Receiver source distance         : 47.00 / 47.00 m  
Receiver height                    : 1.50 / 1.50 m  
Topography                        : 2            (Flat/gentle slope; with  
barrier)  
Barrier angle1                    : -90.00 deg    Angle2 : 90.00 deg  
Barrier height                    : 19.00 m  
Barrier receiver distance         : 1.00 / 1.00 m  
Source elevation                  : 91.25 m  
Receiver elevation                 : 92.00 m  
Barrier elevation                 : 92.00 m  
Reference angle                    : 0.00

Road data, segment # 2: Page Road (day/night)

-----  
Car traffic volume : 6477/563    veh/TimePeriod \*  
Medium truck volume : 515/45    veh/TimePeriod \*  
Heavy truck volume : 368/32    veh/TimePeriod \*  
Posted speed limit : 40 km/h  
Road gradient : 1 %  
Road pavement : 1 (Typical asphalt or concrete)

\* Refers to calculated road volumes based on the following input:

24 hr Traffic Volume (AADT or SADT): 8000  
Percentage of Annual Growth : 0.00  
Number of Years of Growth : 0.00  
Medium Truck % of Total Volume : 7.00  
Heavy Truck % of Total Volume : 5.00  
Day (16 hrs) % of Total Volume : 92.00

Data for Segment # 2: Page Road (day/night)

```

-----
Angle1   Angle2           : -63.00 deg   -53.00 deg
Wood depth           :           0       (No woods.)
No of house rows    :           0 / 0
Surface              :           2       (Reflective ground surface)
Receiver source distance : 43.00 / 43.00 m
Receiver height      :    1.50 / 1.50 m
Topography           :           2       (Flat/gentle slope; with
barrier)
Barrier angle1      : -63.00 deg   Angle2 : -53.00 deg
Barrier height      :    19.00 m
Barrier receiver distance : 1.00 / 1.00 m
Source elevation     :    91.25 m
Receiver elevation   :    92.00 m
Barrier elevation    :    92.00 m
Reference angle      :     0.00
  
```

Results segment # 1: Innes Road (day)

-----

Source height = 1.50 m

Barrier height for grazing incidence

```

-----
Source      ! Receiver      ! Barrier      ! Elevation of
Height (m) ! Height (m) ! Height (m) ! Barrier Top (m)
-----+-----+-----+-----
          1.50 !          1.50 !          1.48 !          93.48
  
```

ROAD (0.00 + 49.35 + 0.00) = 49.35 dBA

```

Angle1 Angle2  Alpha RefLeq  P.Adj  D.Adj  F.Adj  W.Adj  H.Adj  B.Adj
SubLeq
  
```

```

-----
---
-90     90     0.00  73.68   0.00  -4.96   0.00   0.00   0.00  -19.36
49.35
-----
---
  
```

Segment Leq : 49.35 dBA

Results segment # 2: Page Road (day)

-----

Source height = 1.50 m

Barrier height for grazing incidence

```

-----
Source      ! Receiver      ! Barrier      ! Elevation of
Height (m) ! Height (m) ! Height (m) ! Barrier Top (m)
  
```

```

-----+-----+-----+-----
          1.50 !           1.50 !           1.48 !           93.48

```

ROAD (0.00 + 26.83 + 0.00) = 26.83 dBA

```

Angle1 Angle2  Alpha RefLeq  P.Adj  D.Adj  F.Adj  W.Adj  H.Adj  B.Adj
SubLeq

```

```

-----
-63    -53    0.00  63.96   0.00  -4.57 -12.55   0.00   0.00 -20.00
26.83
-----

```

Segment Leq : 26.83 dBA

Total Leq All Segments: 49.37 dBA

Results segment # 1: Innes Road (night)

Source height = 1.50 m

Barrier height for grazing incidence

```

-----
Source      ! Receiver      ! Barrier      ! Elevation of
Height (m) ! Height (m) ! Height (m) ! Barrier Top (m)
-----+-----+-----+-----
          1.50 !           1.50 !           1.48 !           93.48

```

ROAD (0.00 + 41.75 + 0.00) = 41.75 dBA

```

Angle1 Angle2  Alpha RefLeq  P.Adj  D.Adj  F.Adj  W.Adj  H.Adj  B.Adj
SubLeq

```

```

-----
-90     90     0.00  66.08   0.00  -4.96   0.00   0.00   0.00 -19.36
41.75
-----

```

Segment Leq : 41.75 dBA

Results segment # 2: Page Road (night)

Source height = 1.50 m

Barrier height for grazing incidence

```

-----
Source      ! Receiver      ! Barrier      ! Elevation of
Height (m) ! Height (m) ! Height (m) ! Barrier Top (m)
-----+-----+-----+-----

```

1.50 !            1.50 !            1.48 !            93.48

ROAD (0.00 + 19.24 + 0.00) = 19.24 dBA

| Angle1 | Angle2 | Alpha | RefLeq | P.Adj | D.Adj | F.Adj | W.Adj | H.Adj | B.Adj |
|--------|--------|-------|--------|-------|-------|-------|-------|-------|-------|
|--------|--------|-------|--------|-------|-------|-------|-------|-------|-------|

|        |     |      |       |      |       |        |      |      |        |
|--------|-----|------|-------|------|-------|--------|------|------|--------|
| SubLeq |     |      |       |      |       |        |      |      |        |
| -----  |     |      |       |      |       |        |      |      |        |
| ---    |     |      |       |      |       |        |      |      |        |
| -63    | -53 | 0.00 | 56.36 | 0.00 | -4.57 | -12.55 | 0.00 | 0.00 | -20.00 |
| 19.24  |     |      |       |      |       |        |      |      |        |
| -----  |     |      |       |      |       |        |      |      |        |
| ---    |     |      |       |      |       |        |      |      |        |

Segment Leq : 19.24 dBA

Total Leq All Segments: 41.77 dBA

**TOTAL Leq FROM ALL SOURCES (DAY): 49.37**  
**(NIGHT): 41.77**

Filename: powW1.te                    Time Period: Day/Night 16/8 hours  
**Description: Floor 1, West Face**

Road data, segment # 1: Innes Road (day/night)

-----  
Car traffic volume : 28336/2464    veh/TimePeriod  
Medium truck volume : 2254/196    veh/TimePeriod  
Heavy truck volume : 1610/140    veh/TimePeriod  
Posted speed limit : 60 km/h  
Road gradient : 1 %  
Road pavement : 1 (Typical asphalt or concrete)

Data for Segment # 1: Innes Road (day/night)

-----  
Angle1    Angle2                    : -90.00 deg    90.00 deg  
Wood depth                        : 0            (No woods.)  
No of house rows                  : 0 / 0  
Surface                            : 2            (Reflective ground surface)  
Receiver source distance          : 41.00 / 41.00 m  
Receiver height                    : 1.50 / 1.50 m  
Topography                        : 2            (Flat/gentle slope; with  
barrier)  
Barrier angle1                     : 3.00 deg    Angle2 : 90.00 deg  
Barrier height                     : 19.00 m  
Barrier receiver distance         : 1.00 / 1.00 m  
Source elevation                   : 91.25 m  
Receiver elevation                 : 92.00 m  
Barrier elevation                  : 92.00 m  
Reference angle                    : 0.00

Road data, segment # 2: Page Road (day/night)

-----  
Car traffic volume : 6477/563    veh/TimePeriod \*  
Medium truck volume : 515/45    veh/TimePeriod \*  
Heavy truck volume : 368/32    veh/TimePeriod \*  
Posted speed limit : 40 km/h  
Road gradient : 1 %  
Road pavement : 1 (Typical asphalt or concrete)

\* Refers to calculated road volumes based on the following input:

24 hr Traffic Volume (AADT or SADT): 8000  
Percentage of Annual Growth : 0.00  
Number of Years of Growth : 0.00  
Medium Truck % of Total Volume : 7.00  
Heavy Truck % of Total Volume : 5.00  
Day (16 hrs) % of Total Volume : 92.00

Data for Segment # 2: Page Road (day/night)

```

-----
Angle1   Angle2           : -47.00 deg   -41.00 deg
Wood depth      :           0       (No woods.)
No of house rows :           0 / 0
Surface         :           2       (Reflective ground surface)
Receiver source distance : 61.70 / 61.70 m
Receiver height  :           1.50 / 1.50 m
Topography      :           2       (Flat/gentle slope; with
barrier)
Barrier angle1   : -47.00 deg   Angle2 : -41.00 deg
Barrier height   :           19.00 m
Barrier receiver distance : 1.00 / 1.00 m
Source elevation :           91.25 m
Receiver elevation :           92.00 m
Barrier elevation :           92.00 m
Reference angle  :           0.00
  
```

Results segment # 1: Innes Road (day)

-----

Source height = 1.50 m

Barrier height for grazing incidence

```

-----
Source      ! Receiver      ! Barrier      ! Elevation of
Height (m) ! Height (m) ! Height (m) ! Barrier Top (m)
-----+-----+-----+-----
          1.50 !          1.50 !          1.48 !          93.48
  
```

ROAD (66.44 + 46.79 + 0.00) = 66.49 dBA

```

Angle1 Angle2  Alpha RefLeq  P.Adj  D.Adj  F.Adj  W.Adj  H.Adj  B.Adj
SubLeq
  
```

```

-----
---
-90      3    0.00  73.68   0.00  -4.37  -2.87   0.00   0.00   0.00
66.44
  
```

```

-----
---
  3      90    0.00  73.68   0.00  -4.37  -3.16   0.00   0.00 -19.36
46.79
  
```

---

Segment Leq : 66.49 dBA

Results segment # 2: Page Road (day)

-----

Source height = 1.50 m

Barrier height for grazing incidence

```

-----
Source      ! Receiver      ! Barrier      ! Elevation of
Height (m) ! Height (m) ! Height (m) ! Barrier Top (m)
-----+-----+-----+-----
          1.50 !          1.50 !          1.49 !          93.49
  
```

ROAD (0.00 + 23.04 + 0.00) = 23.04 dBA

```

Angle1 Angle2  Alpha RefLeq  P.Adj  D.Adj  F.Adj  W.Adj  H.Adj  B.Adj
SubLeq
  
```

```

-----
---
-47    -41    0.00  63.96    0.00  -6.14 -14.77    0.00    0.00 -20.00
23.04
-----
---
  
```

Segment Leq : 23.04 dBA

Total Leq All Segments: 66.49 dBA

Results segment # 1: Innes Road (night)

Source height = 1.50 m

Barrier height for grazing incidence

```

-----
Source      ! Receiver      ! Barrier      ! Elevation of
Height (m) ! Height (m) ! Height (m) ! Barrier Top (m)
-----+-----+-----+-----
          1.50 !          1.50 !          1.48 !          93.48
  
```

ROAD (58.84 + 39.20 + 0.00) = 58.89 dBA

```

Angle1 Angle2  Alpha RefLeq  P.Adj  D.Adj  F.Adj  W.Adj  H.Adj  B.Adj
SubLeq
  
```

```

-----
---
-90     3    0.00  66.08    0.00  -4.37  -2.87    0.00    0.00    0.00
58.84
-----
---
  
```

```

---
  3     90    0.00  66.08    0.00  -4.37  -3.16    0.00    0.00 -19.36
39.20
-----
---
  
```

Segment Leq : 58.89 dBA

Results segment # 2: Page Road (night)

-----  
 Source height = 1.50 m

Barrier height for grazing incidence

| Source<br>Height (m) | Receiver<br>Height (m) | Barrier<br>Height (m) | Elevation of<br>Barrier Top (m) |
|----------------------|------------------------|-----------------------|---------------------------------|
| 1.50                 | 1.50                   | 1.49                  | 93.49                           |

ROAD (0.00 + 15.45 + 0.00) = 15.45 dBA

| Angle1 | Angle2 | Alpha | RefLeq | P.Adj | D.Adj | F.Adj | W.Adj | H.Adj | B.Adj |
|--------|--------|-------|--------|-------|-------|-------|-------|-------|-------|
| SubLeq |        |       |        |       |       |       |       |       |       |

-----  
 ---  
 -47    -41    0.00   56.36   0.00   -6.14   -14.77   0.00   0.00   -20.00  
 15.45  
 -----  
 ---

Segment Leq : 15.45 dBA

Total Leq All Segments: 58.89 dBA

**TOTAL Leq FROM ALL SOURCES (DAY): 66.49**  
**(NIGHT): 58.89**

Filename: POW6S.te                    Time Period: Day/Night 16/8 hours  
**Description: POW 6th floor south face**

Road data, segment # 1: Innes Road (day/night)

-----  
Car traffic volume : 28336/2464 veh/TimePeriod \*  
Medium truck volume : 2254/196 veh/TimePeriod \*  
Heavy truck volume : 1610/140 veh/TimePeriod \*  
Posted speed limit : 60 km/h  
Road gradient : 1 %  
Road pavement : 1 (Typical asphalt or concrete)

\* Refers to calculated road volumes based on the following input:

24 hr Traffic Volume (AADT or SADT): 35000  
Percentage of Annual Growth : 0.00  
Number of Years of Growth : 0.00  
Medium Truck % of Total Volume : 7.00  
Heavy Truck % of Total Volume : 5.00  
Day (16 hrs) % of Total Volume : 92.00

Data for Segment # 1: Innes Road (day/night)

-----  
Angle1 Angle2 : -90.00 deg 90.00 deg  
Wood depth : 0 (No woods.)  
No of house rows : 0 / 0  
Surface : 2 (Reflective ground surface)  
Receiver source distance : 36.90 / 36.90 m  
Receiver height : 1.50 / 1.50 m  
Topography : 3 (Elevated; no barrier)  
Elevation : 18.25 m  
Reference angle : 0.00

Road data, segment # 2: Page Road (day/night)

-----  
Car traffic volume : 6477/563 veh/TimePeriod \*  
Medium truck volume : 515/45 veh/TimePeriod \*  
Heavy truck volume : 368/32 veh/TimePeriod \*  
Posted speed limit : 40 km/h  
Road gradient : 1 %  
Road pavement : 1 (Typical asphalt or concrete)

\* Refers to calculated road volumes based on the following input:

24 hr Traffic Volume (AADT or SADT): 8000  
Percentage of Annual Growth : 0.00  
Number of Years of Growth : 0.00  
Medium Truck % of Total Volume : 7.00

Heavy Truck % of Total Volume : 5.00  
 Day (16 hrs) % of Total Volume : 92.00

Data for Segment # 2: Page Road (day/night)

```
-----
Angle1  Angle2      : -70.00 deg  -60.00 deg
Wood depth      :      0      (No woods.)
No of house rows :      0 / 0
Surface         :      2      (Reflective ground surface)
Receiver source distance : 30.00 / 30.00 m
Receiver height  :   1.50 / 1.50 m
Topography      :      3      (Elevated; no barrier)
Elevation       :  18.25 m
Reference angle  :   0.00
-----
```

Results segment # 1: Innes Road (day)

Source height = 1.50 m

ROAD (0.00 + 69.77 + 0.00) = 69.77 dBA

| Angle1 | Angle2 | Alpha | RefLeq | P.Adj | D.Adj | F.Adj | W.Adj | H.Adj | B.Adj |
|--------|--------|-------|--------|-------|-------|-------|-------|-------|-------|
| -90    | 90     | 0.00  | 73.68  | 0.00  | -3.91 | 0.00  | 0.00  | 0.00  | 0.00  |

```
-----
SubLeq
-----
69.77
-----
```

Segment Leq : 69.77 dBA

Results segment # 2: Page Road (day)

Source height = 1.50 m

ROAD (0.00 + 48.39 + 0.00) = 48.39 dBA

| Angle1 | Angle2 | Alpha | RefLeq | P.Adj | D.Adj | F.Adj  | W.Adj | H.Adj | B.Adj |
|--------|--------|-------|--------|-------|-------|--------|-------|-------|-------|
| -70    | -60    | 0.00  | 63.96  | 0.00  | -3.01 | -12.55 | 0.00  | 0.00  | 0.00  |

```
-----
SubLeq
-----
48.39
-----
```

Segment Leq : 48.39 dBA

Total Leq All Segments: 69.80 dBA

Results segment # 1: Innes Road (night)

-----  
Source height = 1.50 m

ROAD (0.00 + 62.17 + 0.00) = 62.17 dBA

| Angle1 | Angle2 | Alpha | RefLeq | P.Adj | D.Adj | F.Adj | W.Adj | H.Adj | B.Adj |
|--------|--------|-------|--------|-------|-------|-------|-------|-------|-------|
|--------|--------|-------|--------|-------|-------|-------|-------|-------|-------|

SubLeq

-----  
---  
-90      90      0.00   66.08   0.00   -3.91   0.00   0.00   0.00   0.00  
62.17  
-----  
---

Segment Leq : 62.17 dBA

Results segment # 2: Page Road (night)

-----  
Source height = 1.50 m

ROAD (0.00 + 40.80 + 0.00) = 40.80 dBA

| Angle1 | Angle2 | Alpha | RefLeq | P.Adj | D.Adj | F.Adj | W.Adj | H.Adj | B.Adj |
|--------|--------|-------|--------|-------|-------|-------|-------|-------|-------|
|--------|--------|-------|--------|-------|-------|-------|-------|-------|-------|

SubLeq

-----  
---  
-70      -60      0.00   56.36   0.00   -3.01   -12.55   0.00   0.00   0.00  
40.80  
-----  
---

Segment Leq : 40.80 dBA

Total Leq All Segments: 62.20 dBA

**TOTAL Leq FROM ALL SOURCES (DAY) : 69.80**  
**(NIGHT) : 62.20**

Filename: RpowE6.te                    Time Period: Day/Night 16/8 hours  
**Description: Floor 6, East Face**

Road data, segment # 1: Innes Road (day/night)

-----  
Car traffic volume : 28336/2464    veh/TimePeriod  
Medium truck volume : 2254/196    veh/TimePeriod  
Heavy truck volume : 1610/140    veh/TimePeriod  
Posted speed limit : 60 km/h  
Road gradient : 1 %  
Road pavement : 1 (Typical asphalt or concrete)

Data for Segment # 1: Innes Road (day/night)

-----  
Angle1    Angle2                    : 2.00 deg    90.00 deg  
Wood depth : 0                    (No woods.)  
No of house rows : 0 / 0  
Surface : 2                    (Reflective ground surface)  
Receiver source distance : 59.00 / 59.00 m  
Receiver height : 17.50 / 17.50 m  
Topography : 1                    (Flat/gentle slope; no barrier)  
Reference angle : 0.00

Road data, segment # 2: Page Road (day/night)

-----  
Car traffic volume : 6477/563    veh/TimePeriod \*  
Medium truck volume : 515/45    veh/TimePeriod \*  
Heavy truck volume : 368/32    veh/TimePeriod \*  
Posted speed limit : 40 km/h  
Road gradient : 1 %  
Road pavement : 1 (Typical asphalt or concrete)

\* Refers to calculated road volumes based on the following input:

24 hr Traffic Volume (AADT or SADT): 8000  
Percentage of Annual Growth : 0.00  
Number of Years of Growth : 0.00  
Medium Truck % of Total Volume : 7.00  
Heavy Truck % of Total Volume : 5.00  
Day (16 hrs) % of Total Volume : 92.00

Data for Segment # 2: Page Road (day/night)

-----  
Angle1    Angle2                    : -76.00 deg    -66.00 deg  
Wood depth : 0                    (No woods.)  
No of house rows : 0 / 0  
Surface : 2                    (Reflective ground surface)  
Receiver source distance : 30.00 / 30.00 m

Receiver height : 17.50 / 17.50 m  
 Topography : 1 (Flat/gentle slope; no barrier)  
 Reference angle : 0.00

Results segment # 1: Innes Road (day)

-----  
 Source height = 1.50 m

ROAD (0.00 + 64.62 + 0.00) = 64.62 dBA

| Angle1 | Angle2 | Alpha | RefLeq | P.Adj | D.Adj | F.Adj | W.Adj | H.Adj | B.Adj |
|--------|--------|-------|--------|-------|-------|-------|-------|-------|-------|
| SubLeq |        |       |        |       |       |       |       |       |       |

-----  
 ---  
 2 90 0.00 73.68 0.00 -5.95 -3.11 0.00 0.00 0.00  
 64.62  
 -----  
 ---

Segment Leq : 64.62 dBA

Results segment # 2: Page Road (day)

-----  
 Source height = 1.50 m

ROAD (0.00 + 48.39 + 0.00) = 48.39 dBA

| Angle1 | Angle2 | Alpha | RefLeq | P.Adj | D.Adj | F.Adj | W.Adj | H.Adj | B.Adj |
|--------|--------|-------|--------|-------|-------|-------|-------|-------|-------|
| SubLeq |        |       |        |       |       |       |       |       |       |

-----  
 ---  
 -76 -66 0.00 63.96 0.00 -3.01 -12.55 0.00 0.00 0.00  
 48.39  
 -----  
 ---

Segment Leq : 48.39 dBA

Total Leq All Segments: 64.72 dBA

Results segment # 1: Innes Road (night)

-----  
 Source height = 1.50 m

ROAD (0.00 + 57.02 + 0.00) = 57.02 dBA

| Angle1 | Angle2 | Alpha | RefLeq | P.Adj | D.Adj | F.Adj | W.Adj | H.Adj | B.Adj |
|--------|--------|-------|--------|-------|-------|-------|-------|-------|-------|
| SubLeq |        |       |        |       |       |       |       |       |       |

-----  
 ---

2 90 0.00 66.08 0.00 -5.95 -3.11 0.00 0.00 0.00  
57.02

-----  
---  
Segment Leq : 57.02 dBA

Results segment # 2: Page Road (night)  
-----

Source height = 1.50 m

ROAD (0.00 + 40.80 + 0.00) = 40.80 dBA

| Angle1 | Angle2 | Alpha | RefLeq | P.Adj | D.Adj | F.Adj | W.Adj | H.Adj | B.Adj |
|--------|--------|-------|--------|-------|-------|-------|-------|-------|-------|
| SubLeq |        |       |        |       |       |       |       |       |       |

-----  
---  
-76 -66 0.00 56.36 0.00 -3.01 -12.55 0.00 0.00 0.00  
40.80

-----  
---  
Segment Leq : 40.80 dBA

Total Leq All Segments: 57.12 dBA

**TOTAL Leq FROM ALL SOURCES (DAY) : 64.72**  
**(NIGHT) : 57.12**

Filename: powN6.te                    Time Period: Day/Night 16/8 hours  
**Description: Floor 6, North Face**

Road data, segment # 1: Innes Road (day/night)

-----  
Car traffic volume : 28336/2464    veh/TimePeriod  
Medium truck volume : 2254/196    veh/TimePeriod  
Heavy truck volume : 1610/140    veh/TimePeriod  
Posted speed limit : 60 km/h  
Road gradient : 1 %  
Road pavement : 1 (Typical asphalt or concrete)

Data for Segment # 1: Innes Road (day/night)

-----  
Angle1    Angle2                    : -90.00 deg    90.00 deg  
Wood depth : 0                    (No woods.)  
No of house rows : 0 / 0  
Surface : 2                    (Reflective ground surface)  
Receiver source distance : 47.00 / 47.00 m  
Receiver height : 17.50 / 17.50 m  
Topography : 2                    (Flat/gentle slope; with barrier)  
Barrier angle1 : -90.00 deg    Angle2 : 90.00 deg  
Barrier height : 19.00 m  
Barrier receiver distance : 1.00 / 1.00 m  
Source elevation : 91.25 m  
Receiver elevation : 92.00 m  
Barrier elevation : 92.00 m  
Reference angle : 0.00

Road data, segment # 2: Page Road (day/night)

-----  
Car traffic volume : 6477/563    veh/TimePeriod \*  
Medium truck volume : 515/45    veh/TimePeriod \*  
Heavy truck volume : 368/32    veh/TimePeriod \*  
Posted speed limit : 40 km/h  
Road gradient : 1 %  
Road pavement : 1 (Typical asphalt or concrete)

\* Refers to calculated road volumes based on the following input:

24 hr Traffic Volume (AADT or SADT): 8000  
Percentage of Annual Growth : 0.00  
Number of Years of Growth : 0.00  
Medium Truck % of Total Volume : 7.00  
Heavy Truck % of Total Volume : 5.00  
Day (16 hrs) % of Total Volume : 92.00

Data for Segment # 2: Page Road (day/night)

```

-----
Angle1   Angle2           : -63.00 deg   -53.00 deg
Wood depth      :           0       (No woods.)
No of house rows :           0 / 0
Surface         :           2       (Reflective ground surface)
Receiver source distance : 43.00 / 43.00 m
Receiver height  : 17.50 / 17.50 m
Topography      :           2       (Flat/gentle slope; with
barrier)
Barrier angle1   : -63.00 deg   Angle2 : -53.00 deg
Barrier height    : 19.00 m
Barrier receiver distance : 1.00 / 1.00 m
Source elevation  : 91.25 m
Receiver elevation : 92.00 m
Barrier elevation  : 92.00 m
Reference angle   : 0.00
    
```

Results segment # 1: Innes Road (day)

-----

Source height = 1.50 m

Barrier height for grazing incidence

```

-----
Source      ! Receiver      ! Barrier      ! Elevation of
Height (m) ! Height (m) ! Height (m) ! Barrier Top (m)
-----+-----+-----+-----
          1.50 !      17.50 !      17.14 !      109.14
    
```

ROAD (0.00 + 53.98 + 0.00) = 53.98 dBA

```

Angle1 Angle2  Alpha RefLeq  P.Adj  D.Adj  F.Adj  W.Adj  H.Adj  B.Adj
SubLeq
    
```

```

-----
---
-90     90     0.00  73.68   0.00  -4.96   0.00   0.00   0.00  -14.73
53.98
-----
---
    
```

Segment Leq : 53.98 dBA

Results segment # 2: Page Road (day)

-----

Source height = 1.50 m

Barrier height for grazing incidence

```

-----
Source      ! Receiver      ! Barrier      ! Elevation of
Height (m) ! Height (m) ! Height (m) ! Barrier Top (m)
    
```

```

-----+-----+-----+-----
          1.50 !          17.50 !          17.11 !          109.11

```

ROAD (0.00 + 30.37 + 0.00) = 30.37 dBA

```

Angle1 Angle2  Alpha RefLeq  P.Adj  D.Adj  F.Adj  W.Adj  H.Adj  B.Adj
SubLeq

```

```

-----
---
-63    -53    0.00  63.96   0.00  -4.57 -12.55   0.00   0.00 -16.46
30.37
-----
---
```

Segment Leq : 30.37 dBA

Total Leq All Segments: 54.00 dBA

Results segment # 1: Innes Road (night)

```
-----
```

Source height = 1.50 m

Barrier height for grazing incidence

```
-----
```

```

Source      ! Receiver      ! Barrier      ! Elevation of
Height (m) ! Height (m) ! Height (m) ! Barrier Top (m)

```

```

-----+-----+-----+-----
          1.50 !          17.50 !          17.14 !          109.14

```

ROAD (0.00 + 46.38 + 0.00) = 46.38 dBA

```

Angle1 Angle2  Alpha RefLeq  P.Adj  D.Adj  F.Adj  W.Adj  H.Adj  B.Adj
SubLeq

```

```

-----
---
-90     90    0.00  66.08   0.00  -4.96   0.00   0.00   0.00 -14.73
46.38
-----
---
```

Segment Leq : 46.38 dBA

Results segment # 2: Page Road (night)

```
-----
```

Source height = 1.50 m

Barrier height for grazing incidence

```
-----
```

```

Source      ! Receiver      ! Barrier      ! Elevation of
Height (m) ! Height (m) ! Height (m) ! Barrier Top (m)

```

```

-----+-----+-----+-----
```

1.50 !            17.50 !            17.11 !            109.11

ROAD (0.00 + 22.78 + 0.00) = 22.78 dBA

| Angle1 | Angle2 | Alpha | RefLeq | P.Adj | D.Adj | F.Adj | W.Adj | H.Adj | B.Adj |
|--------|--------|-------|--------|-------|-------|-------|-------|-------|-------|
|--------|--------|-------|--------|-------|-------|-------|-------|-------|-------|

|        |     |      |       |      |       |        |      |      |        |
|--------|-----|------|-------|------|-------|--------|------|------|--------|
| SubLeq |     |      |       |      |       |        |      |      |        |
| -----  |     |      |       |      |       |        |      |      |        |
| ---    |     |      |       |      |       |        |      |      |        |
| -63    | -53 | 0.00 | 56.36 | 0.00 | -4.57 | -12.55 | 0.00 | 0.00 | -16.46 |
| 22.78  |     |      |       |      |       |        |      |      |        |
| -----  |     |      |       |      |       |        |      |      |        |
| ---    |     |      |       |      |       |        |      |      |        |

Segment Leq : 22.78 dBA

Total Leq All Segments: 46.40 dBA

**TOTAL Leq FROM ALL SOURCES (DAY): 54.00**  
**(NIGHT): 46.40**

Filename: powW6.te                    Time Period: Day/Night 16/8 hours  
**Description: Floor 6, West Face**

Road data, segment # 1: Innes Road (day/night)

-----  
Car traffic volume : 28336/2464    veh/TimePeriod  
Medium truck volume : 2254/196    veh/TimePeriod  
Heavy truck volume : 1610/140    veh/TimePeriod  
Posted speed limit : 60 km/h  
Road gradient : 1 %  
Road pavement : 1 (Typical asphalt or concrete)

Data for Segment # 1: Innes Road (day/night)

-----  
Angle1    Angle2                    : -90.00 deg    90.00 deg  
Wood depth                        : 0            (No woods.)  
No of house rows                  : 0 / 0  
Surface                            : 2            (Reflective ground surface)  
Receiver source distance          : 41.00 / 41.00 m  
Receiver height                    : 17.50 / 17.50 m  
Topography                        : 2            (Flat/gentle slope; with  
barrier)  
Barrier angle1                    : 3.00 deg    Angle2 : 90.00 deg  
Barrier height                     : 19.00 m  
Barrier receiver distance         : 1.00 / 1.00 m  
Source elevation                  : 91.25 m  
Receiver elevation                 : 92.00 m  
Barrier elevation                 : 92.00 m  
Reference angle                    : 0.00

Road data, segment # 2: Page Road (day/night)

-----  
Car traffic volume : 6477/563    veh/TimePeriod \*  
Medium truck volume : 515/45    veh/TimePeriod \*  
Heavy truck volume : 368/32    veh/TimePeriod \*  
Posted speed limit : 40 km/h  
Road gradient : 1 %  
Road pavement : 1 (Typical asphalt or concrete)

\* Refers to calculated road volumes based on the following input:

24 hr Traffic Volume (AADT or SADT): 8000  
Percentage of Annual Growth : 0.00  
Number of Years of Growth : 0.00  
Medium Truck % of Total Volume : 7.00  
Heavy Truck % of Total Volume : 5.00  
Day (16 hrs) % of Total Volume : 92.00

Data for Segment # 2: Page Road (day/night)

```

-----
Angle1   Angle2           : -47.00 deg   -41.00 deg
Wood depth      :           0       (No woods.)
No of house rows :           0 / 0
Surface         :           2       (Reflective ground surface)
Receiver source distance : 61.70 / 61.70 m
Receiver height  : 17.50 / 17.50 m
Topography      :           2       (Flat/gentle slope; with
barrier)
Barrier angle1   : -47.00 deg   Angle2 : -41.00 deg
Barrier height   : 19.00 m
Barrier receiver distance : 1.00 / 1.00 m
Source elevation : 91.25 m
Receiver elevation : 92.00 m
Barrier elevation : 92.00 m
Reference angle  : 0.00

```

Results segment # 1: Innes Road (day)

-----

Source height = 1.50 m

Barrier height for grazing incidence

```

-----
Source      ! Receiver      ! Barrier      ! Elevation of
Height (m) ! Height (m) ! Height (m) ! Barrier Top (m)
-----+-----+-----+-----
          1.50 !          17.50 !          17.09 !          109.09

```

ROAD (66.44 + 51.39 + 0.00) = 66.57 dBA

```

Angle1 Angle2  Alpha RefLeq  P.Adj  D.Adj  F.Adj  W.Adj  H.Adj  B.Adj
SubLeq

```

```

-----
---
-90     3     0.00  73.68   0.00  -4.37  -2.87   0.00   0.00   0.00
66.44

```

```

-----
---
 3     90     0.00  73.68   0.00  -4.37  -3.16   0.00   0.00 -14.76
51.39

```

-----

Segment Leq : 66.57 dBA

Results segment # 2: Page Road (day)

Source height = 1.50 m

Barrier height for grazing incidence

| Source Height (m) | Receiver Height (m) | Barrier Height (m) | Elevation of Barrier Top (m) |
|-------------------|---------------------|--------------------|------------------------------|
| 1.50              | 17.50               | 17.23              | 109.23                       |

ROAD (0.00 + 25.86 + 0.00) = 25.86 dBA

| Angle1 | Angle2 | Alpha | RefLeq | P.Adj | D.Adj | F.Adj  | W.Adj | H.Adj | B.Adj  |
|--------|--------|-------|--------|-------|-------|--------|-------|-------|--------|
| -47    | -41    | 0.00  | 63.96  | 0.00  | -6.14 | -14.77 | 0.00  | 0.00  | -17.18 |

SubLeq  
25.86

Segment Leq : 25.86 dBA

Total Leq All Segments: 66.57 dBA

Results segment # 1: Innes Road (night)

Source height = 1.50 m

Barrier height for grazing incidence

| Source Height (m) | Receiver Height (m) | Barrier Height (m) | Elevation of Barrier Top (m) |
|-------------------|---------------------|--------------------|------------------------------|
| 1.50              | 17.50               | 17.09              | 109.09                       |

ROAD (58.84 + 43.79 + 0.00) = 58.98 dBA

| Angle1 | Angle2 | Alpha | RefLeq | P.Adj | D.Adj | F.Adj | W.Adj | H.Adj | B.Adj |
|--------|--------|-------|--------|-------|-------|-------|-------|-------|-------|
| -90    | 3      | 0.00  | 66.08  | 0.00  | -4.37 | -2.87 | 0.00  | 0.00  | 0.00  |

SubLeq  
58.84

|   |    |      |       |      |       |       |      |      |        |
|---|----|------|-------|------|-------|-------|------|------|--------|
| 3 | 90 | 0.00 | 66.08 | 0.00 | -4.37 | -3.16 | 0.00 | 0.00 | -14.76 |
|---|----|------|-------|------|-------|-------|------|------|--------|

43.79

Segment Leq : 58.98 dBA

Results segment # 2: Page Road (night)

-----  
Source height = 1.50 m

Barrier height for grazing incidence

-----  
Source ! Receiver ! Barrier ! Elevation of  
Height (m) ! Height (m) ! Height (m) ! Barrier Top (m)  
-----+-----+-----+-----  
1.50 ! 17.50 ! 17.23 ! 109.23

ROAD (0.00 + 18.27 + 0.00) = 18.27 dBA

Angle1 Angle2 Alpha RefLeq P.Adj D.Adj F.Adj W.Adj H.Adj B.Adj  
SubLeq

-----  
---  
-47 -41 0.00 56.36 0.00 -6.14 -14.77 0.00 0.00 -17.18  
18.27  
-----  
---

Segment Leq : 18.27 dBA

Total Leq All Segments: 58.98 dBA

**TOTAL Leq FROM ALL SOURCES (DAY): 66.57**  
**(NIGHT): 58.98**

**APPENDIX D**

---

AIF Tables

20127

Ser  
THL  
B92  
no.148  
Csp. 2  
BLDG.

# BUILDING RESEARCH NOTE

ACOUSTIC INSULATION FACTOR: A RATING FOR THE  
INSULATION OF BUILDINGS AGAINST OUTDOOR NOISE

by

J.D. Quirt

ANALYZED

Division of Building Research, National Research Council of Canada

Ottawa, June 1979  
Revised June 1980

Innes Road

117077

NIA Sample Calculation

LB

Type of Exterior Wall

June 8/18.

① Unit 6J (southeast corner of building)

Daytime living area

Windows on two sides

$$\text{Floor Area} = 36.1 \text{ m}^2 \quad (\text{From A106})$$

$$\text{Window Area} = 10.2 + 8.6 + 3.3 \text{ m}^2 = 22.1 \text{ m}^2 \quad (\text{From A201/2})$$

$$\text{Exterior Wall Area} = 5.5 \text{ m} \times 3 \text{ m (high)} = 16.5 \text{ m}^2$$

$$\begin{array}{l} \text{Percentage of exterior wall area} \\ \text{to total floor area} \end{array} = \frac{16.5}{36.1} = 46\%$$

Table 6.3  $\Rightarrow$  Percentage = 50%  $\Rightarrow$  AIF = 34 > 31  
 $\therefore$  Type of Exterior Wall  $\Rightarrow$  EWI

② Unit 2A (southwest corner of building)

$$\text{Floor Area} = 17.9 \text{ m}^2 \quad (\text{From A102})$$

$$\text{Window Area} = 11 + 4.4 \text{ m}^2 = 15.4 \text{ m}^2 \quad (\text{from A201/4})$$

$$\text{Exterior Wall Area} = 1.5 \text{ m} \times 3 \text{ m (high)} = 4.5 \text{ m}^2$$

$$\begin{array}{l} \text{Percentage of exterior wall area} \\ \text{to total floor area} \end{array} = \frac{4.5}{17.9} = 25\%$$

Table 6.3  $\Rightarrow$  Percentage = 25%  $\Rightarrow$  AIF = 37 > 31  
 $\therefore$  Type of Exterior Wall  $\Rightarrow$  EWI

**Table 6.3** - Acoustic Insulation Factor for Various Types of Exterior Wall

|                            | Percentage of exterior wall area to total floor area of room |    |    |    |    |    |    |    |     |     | Type of Exterior Wall |             |
|----------------------------|--|----|----|----|----|----|----|----|-----|-----|-----------------------|-------------|
|                            | 16   | 20 | 25 | 32 | 40 | 50 | 63 | 80 | 100 | 125 |                       | 160         |
| Acoustic Insulation Factor | 39   | 38 | 37 | 36 | 35 | 34 | 33 | 32 | 31  | 30  | 29                    | EW1         |
|                            | 41   | 40 | 39 | 38 | 37 | 36 | 35 | 34 | 33  | 32  | 31                    | EW2         |
|                            | 44   | 43 | 42 | 41 | 40 | 39 | 38 | 37 | 36  | 35  | 34                    | EW3         |
|                            | 47   | 46 | 45 | 44 | 43 | 42 | 41 | 40 | 39  | 38  | 37                    | EW4         |
|                            | 48   | 47 | 46 | 45 | 44 | 43 | 42 | 41 | 40  | 39  | 38                    | EW1R        |
|                            | 49   | 48 | 47 | 46 | 45 | 44 | 43 | 42 | 41  | 40  | 39                    | EW2R        |
|                            | 50   | 49 | 48 | 47 | 46 | 45 | 44 | 43 | 42  | 41  | 40                    | EW3R        |
|                            | 55   | 54 | 53 | 52 | 51 | 50 | 49 | 48 | 47  | 46  | 45                    | EW5         |
|                            | 56   | 55 | 54 | 53 | 52 | 51 | 50 | 49 | 48  | 47  | 46                    | EW4R        |
|                            | 58   | 57 | 56 | 55 | 54 | 53 | 52 | 51 | 50  | 49  | 48                    | EW6         |
|                            | 59   | 58 | 57 | 56 | 55 | 54 | 53 | 52 | 51  | 50  | 49                    | EW7 or EW5R |
|                            | 63   | 62 | 61 | 60 | 59 | 58 | 57 | 56 | 55  | 54  | 53                    | EW8         |

Source : National Research Council, Division of Building Research, December 1980.

**Explanatory Notes :**

- 1) Where the calculated percentage wall area is not presented as a column heading, the nearest percentage column in the table should be used.
- 2) The common structure of walls EW1 to EW5 is composed of 12.7 mm gypsum board, vapour barrier, and 38 x 89 mm studs with 50 mm (or thicker) mineral wool or glass fibre batts in inter-stud cavities.
- 3) **EW1** denotes exterior wall as in Note 2), plus sheathing, plus wood siding or metal siding and fibre backer board.  
 EW2 denotes exterior wall as in Note 2), plus rigid insulation (25-30 mm), and wood siding or metal siding and fibre backer board.  
 EW3 denotes simulated mansard with structure as in Note 2), plus sheathing, 28 x 89 mm framing, sheathing, and asphalt roofing material.  
 EW4 denotes exterior wall as in Note 2), plus sheathing and 20 mm stucco.  
 EW5 denotes exterior wall as in Note 2), plus sheathing, 25 mm air space, 100 mm brick veneer.  
 EW6 denotes exterior wall composed of 12.7 mm gypsum board, rigid insulation (25-50 mm), 100 mm back-up block, 100 mm face brick.  
 EW7 denotes exterior wall composed of 12.7 mm gypsum board, rigid insulation (25-50 mm), 140 mm back-up block, 100 mm face brick.  
 EW8 denotes exterior wall composed of 12.7 mm gypsum board, rigid insulation (25-50 mm), 200 mm concrete.
- 4) R signifies the mounting of the interior gypsum board on resilient clips.
- 5) An exterior wall conforming to rainscreen design principles and composed of 12.7 mm gypsum board, 100 mm concrete block, rigid insulation (25-50 mm), 25 mm air space, and 100 mm brick veneer has the same AIF as EW6.
- 6) An exterior wall described in EW1 with the addition of rigid insulation (25-50 mm) between the sheathing and the external finish has the same AIF as EW2.

Innes Road

117077

NIA Sample Calculation

LB

Type of Windows

June 8/18

① Unit 6J

Window area as a percentage of total  
floor area of room

$$\frac{\text{Window}}{\text{Floor}} = \frac{22.1}{36.1} = 60\%$$

Table 5  $\Rightarrow$  Percentage = 63%  $\Rightarrow$  AIF = 32 > 31

$\therefore$  Type of window

4-40-40 (or equivalent)

② Unit 2A

$$\frac{\text{Window}}{\text{Floor}} = \frac{15.4}{17.9} = 86\%$$

Table 5  $\Rightarrow$  Percentage  $\Rightarrow$  80%  $\Rightarrow$  AIF = 31  $\checkmark$

$\therefore$  Type of window

4-40-4 (or equivalent.)

**TABLE 5: Acoustic Insulation Factor for Various Types of Windows**

| Window area as a percentage of total floor area of room <sup>(1)</sup> |    |    |    |    |    |    |    |    |    |    |    |    |    | Single<br>glazing   | Double glazing of indicated glass thickness |                      |                      |                      |                      | Triple Glazing                          |                           |
|--|----|----|----|----|----|----|----|----|----|----|----|----|----|---------------------|---|----------------------|----------------------|----------------------|----------------------|---|---------------------------|
| 4  | 5  | 6  | 8  | 10 | 13 | 16 | 20 | 25 | 32 | 40 | 50 | 63 | 80 |                     | 2mm and<br>2mm glass                        | 3mm and<br>3mm glass | 4mm and<br>4mm glass | 3mm and<br>6mm glass | 6mm and<br>6mm glass | 3mm, 3mm and<br>3mm glass               | 3mm, 3mm and<br>6mm glass |
| Acoustic Insulation Factor (AIF) <sup>(2)</sup>                        |    |    |    |    |    |    |    |    |    |    |    |    |    | Thickness           | Interpane spacing in mm <sup>(3)</sup>      |                      |                      |                      |                      | Interpane spacings in mm <sup>(5)</sup> |                           |
| 35   | 34 | 33 | 32 | 31 | 30 | 29 | 28 | 27 | 26 | 25 | 24 | 23 | 22 | 2mm                 | 6   |                      |                      |                      |                      |   |                           |
| 36   | 35 | 34 | 33 | 32 | 31 | 30 | 29 | 28 | 27 | 26 | 25 | 24 | 23 | 3mm                 | 13  |                      | 6                    |                      |                      |   |                           |
| 37   | 36 | 35 | 34 | 33 | 32 | 31 | 30 | 29 | 28 | 27 | 26 | 25 | 24 | 3mm, 6mm            | 15  |                      |                      | 6                    |                      |   |                           |
| 38   | 37 | 36 | 35 | 34 | 33 | 32 | 31 | 30 | 29 | 28 | 27 | 26 | 25 |                     | 18  |                      | 13                   |                      | 6                    |   | 6, 6                      |
| 39   | 38 | 37 | 36 | 35 | 34 | 33 | 32 | 31 | 30 | 29 | 28 | 27 | 26 | 9mm <sup>(4)</sup>  | 22  |                      | 16                   |                      | 6                    |   | 6, 6                      |
| 40   | 39 | 38 | 37 | 36 | 35 | 34 | 33 | 32 | 31 | 30 | 29 | 28 | 27 |                     | 28  |                      | 20                   |                      | 13                   |   | 6, 10                     |
| 41   | 40 | 39 | 38 | 37 | 36 | 35 | 34 | 33 | 32 | 31 | 30 | 29 | 28 | 12mm <sup>(4)</sup> | 35  |                      | 25                   |                      | 16                   |   | 6, 10                     |
| 42   | 41 | 40 | 39 | 38 | 37 | 36 | 35 | 34 | 33 | 32 | 31 | 30 | 29 |                     | 42  |                      | 32                   |                      | 20                   |   | 6, 15                     |
| 43   | 42 | 41 | 40 | 39 | 38 | 37 | 36 | 35 | 34 | 33 | 32 | 31 | 30 |                     | 50  |                      | 40                   |                      | 25                   |   | 6, 20                     |
| 44   | 43 | 42 | 41 | 40 | 39 | 38 | 37 | 36 | 35 | 34 | 33 | 32 | 31 |                     | 63  |                      | 50                   |                      | 30                   |   | 6, 30                     |
| 45   | 44 | 43 | 42 | 41 | 40 | 39 | 38 | 37 | 36 | 35 | 34 | 33 | 32 |                     | 80  |                      | 63                   |                      | 40                   |   | 6, 40                     |
| 46   | 45 | 44 | 43 | 42 | 41 | 40 | 39 | 38 | 37 | 36 | 35 | 34 | 33 |                     | 100   |                      | 80                   |                      | 55                   |   | 6, 40                     |
| 47   | 46 | 45 | 44 | 43 | 42 | 41 | 40 | 39 | 38 | 37 | 36 | 35 | 34 |                     | 125   |                      | 100                  |                      | 75                   |   | 6, 50                     |
| 48   | 47 | 46 | 45 | 44 | 43 | 42 | 41 | 40 | 39 | 38 | 37 | 36 | 35 |                     | 150   |                      | 125                  |                      | 95                   |   | 6, 65                     |
| 49   | 48 | 47 | 46 | 45 | 44 | 43 | 42 | 41 | 40 | 39 | 38 | 37 | 36 |                     |   |                      | 150                  |                      | 110                  |   | 6, 80                     |
| 50   | 49 | 48 | 47 | 46 | 45 | 44 | 43 | 42 | 41 | 40 | 39 | 38 | 37 |                     |   |                      |                      |                      | 100                  |   | 6, 80                     |
|  |    |    |    |    |    |    |    |    |    |    |    |    |    |                     |   |                      |                      |                      | 125                  |   | 6, 100                    |

Source: National Research Council, Division of Building Research, June 1980.

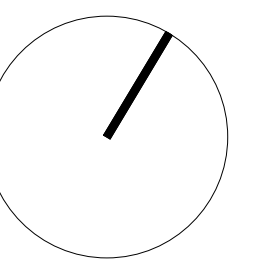
**Explanatory Notes:**

- 1) Where the calculated percentage window area is not presented as a column heading, the nearest percentage column in the table values should be used.
- 2) AIF data listed in the table are for well-fitted weatherstripped units that can be opened. The AIF values apply only when the windows are closed. For windows fixed and sealed to the frame, add three (3) to the AIF given in the table.
- 3) If the interpane spacing or glass thickness for a specific double-glazed window is not listed in the table, the nearest listed values should be used.
- 4) The AIF ratings for 9mm and 12mm glass are for laminated glass only; for solid glass subtract two (2) from the AIF values listed in the table.
- 5) If the interpane spacings for a specific triple-glazed window are not listed in the table, use the listed case whose combined spacings are nearest the actual combined spacing.
- 6) The AIF data listed in the table are for typical windows, but details of glass mounting, window seals, etc. may result in slightly different performance for some manufacturers' products. If laboratory sound transmission loss data (conforming to ASTM test method E-90) are available, these should be used to calculate the AIF.

GENERAL ARCHITECTURAL NOTES:  
 1. This drawing is the property of the Architect and may not be reproduced or used without the expressed consent of the Architect.  
 2. Drawings are not to be scaled. The Contractor is responsible for checking and verifying all levels and dimensions and shall report all discrepancies to the Architect and obtain clarification prior to commencing work.  
 3. Upon notice in writing, the Architect will provide written clarification or supplementary information regarding the intent of the Contract Documents.  
 4. The Architectural drawings are to be read in conjunction with all other Contract Documents including Project Manuals and the Structural, Mechanical and Electrical Drawings.  
 5. Positions of proposed or finished Mechanical or Electrical devices, fittings and fixtures are indicated on the Architectural Drawings. Locations shown on the Architectural Drawings shall govern over Mechanical and Electrical Drawings.  
 6. Mechanical and Electrical items not clearly located will be located as directed by the Architect.  
 7. These documents are not to be used for construction unless specifically noted for such purpose.



ISSUE RECORD



**project1  
studio**

Project1 Studio Incorporated  
 (613.884.9339) | mail@project1studio.ca

**3443 INNES**

3443 Innes Road  
 Orleans, ON

| PROJ | SCALE  | DRAWN | REVIEWED |
|------|--------|-------|----------|
| 1704 | 1 : 75 | JRKII | RMK      |

**LEVEL 02 FLOOR PLAN**

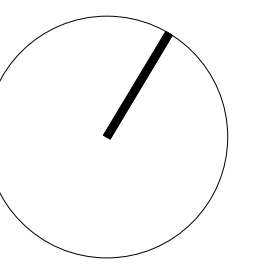
**A102**

GENERAL ARCHITECTURAL NOTES:  
 1. This drawing is the property of the Architect and may not be reproduced or used without the expressed consent of the Architect.  
 2. Drawings are not to be scaled. The Contractor is responsible for checking and verifying all levels and dimensions and shall report all discrepancies to the Architect and obtain clarification prior to commencing work.  
 3. Upon notice in writing, the Architect will provide written clarification or supplementary information regarding the intent of the Contract Documents.  
 4. The Architectural Drawings are to be read in conjunction with all other Contract Documents including Project Manuals and the Structural, Mechanical and Electrical Drawings.  
 5. Positions of proposed or finished Mechanical or Electrical devices, fittings and fixtures are indicated on the Architectural Drawings. Locations shown on the Architectural Drawings shall govern over Mechanical and Electrical Drawings.  
 6. Mechanical and Electrical items not clearly located will be located as directed by the Architect.  
 7. These documents are not to be used for construction unless specifically noted for such purpose.



1 LEVEL 06 FLOOR PLAN  
 A106 SCALE: 1 : 75

ISSUE RECORD



project1  
 studio

Project1 Studio Incorporated  
 (613.884.9339) | mail@project1studio.ca

3443 INNES

3443 Innes Road  
 Orleans, ON

| PROJ | SCALE  | DRAWN | REVIEWED |
|------|--------|-------|----------|
| 1704 | 1 : 75 | JRKII | RMK      |

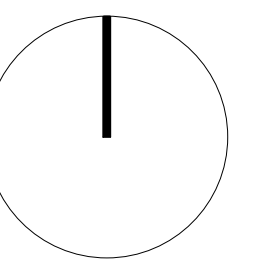
LEVEL 06 FLOOR PLAN

A106

GENERAL ARCHITECTURAL NOTES:  
 1. This drawing is the property of the Architect and may not be reproduced or used without the expressed consent of the Architect.  
 2. Drawings are not to be scaled. The Contractor is responsible for checking and verifying all levels and dimensions and shall report all discrepancies to the Architect and obtain clarification prior to commencing work.  
 3. Upon notice in writing, the Architect will provide written clarification or supplementary information regarding the intent of the Contract Documents.  
 4. The Architectural Drawings are to be read in conjunction with all other Contract Documents including Project Manuals and the Structural, Mechanical and Electrical Drawings.  
 5. Positions of proposed or finished Mechanical or Electrical devices, fittings and fixtures are indicated on the Architectural Drawings. Locations shown on the Architectural Drawings shall govern over Mechanical and Electrical Drawings.  
 6. Mechanical and Electrical items not clearly located will be located as directed by the Architect.  
 7. These documents are not to be used for construction unless specifically noted for such purpose.



ISSUE RECORD



project1  
studio

Project1 Studio Incorporated  
 (613.884.9339) | mail@project1studio.ca

3443 INNES

3443 Innes Road  
 Orleans, ON

| PROJ | SCALE  | DRAWN | REVIEWED |
|------|--------|-------|----------|
| 1704 | 1 : 75 | JRKII | RMK      |

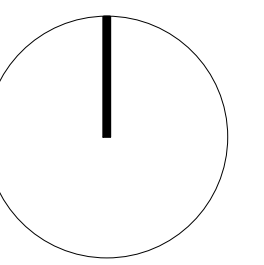
SOUTH ELEVATION

**A201**

GENERAL ARCHITECTURAL NOTES:  
 1. This drawing is the property of the Architect and may not be reproduced or used without the expressed consent of the Architect.  
 2. Drawings are not to be scaled. The Contractor is responsible for checking and verifying all levels and dimensions and shall report all discrepancies to the Architect and obtain clarification prior to commencing work.  
 3. Upon notice in writing, the Architect will provide written clarification or supplementary information regarding the intent of the Contract Documents.  
 4. The Architectural Drawings are to be read in conjunction with all other Contract Documents including Project Manuals and the Structural, Mechanical and Electrical Drawings.  
 5. Positions of proposed or finished Mechanical or Electrical devices, fittings and fixtures are indicated on the Architectural Drawings. Locations shown on the Architectural Drawings shall govern over Mechanical and Electrical Drawings. Mechanical and Electrical items not clearly located will be located as directed by the Architect.  
 6. These documents are not to be used for construction unless specifically noted for such purpose.



ISSUE RECORD



**project1  
studio**

Project1 Studio Incorporated  
 (613.884.9339 | mail@project1studio.ca)

**3443 INNES**

3443 Innes Road  
 Orleans, ON

| PROJ | SCALE  | DRAWN | REVIEWED |
|------|--------|-------|----------|
| 1704 | 1 : 75 | JRKII | RMK      |

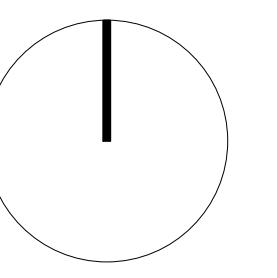
**EAST ELEVATION**

**A202**

GENERAL ARCHITECTURAL NOTES:  
 1. This drawing is the property of the Architect and may not be reproduced or used without the expressed consent of the Architect.  
 2. Drawings are not to be scaled. The Contractor is responsible for checking and verifying all levels and dimensions and shall report all discrepancies to the Architect and obtain clarification prior to commencing work.  
 3. Upon notice in writing, the Architect will provide written clarification or supplementary information regarding the intent of the Contract Documents.  
 4. The Architectural Drawings are to be read in conjunction with all other Contract Documents including Project Manuals and the Structural, Mechanical and Electrical Drawings.  
 5. Positions of proposed or finished Mechanical or Electrical devices, fittings and fixtures are indicated on the Architectural Drawings. Locations shown on the Architectural Drawings shall govern over Mechanical and Electrical Drawings. Mechanical and Electrical items not clearly located will be located as directed by the Architect.  
 6. These documents are not to be used for construction unless specifically noted for such purpose.



ISSUE RECORD



**project1**  
 studio

Project1 Studio Incorporated  
 (613.884.9399) | email@project1studio.ca

**3443 INNES**

3443 Innes Road  
 Orleans, ON

| PROJ | SCALE  | DRAWN | REVIEWED |
|------|--------|-------|----------|
| 1704 | 1 : 75 | JRKII | RMK      |

**WEST ELEVATION**

**A204**