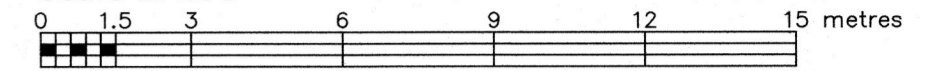


PART OF LOT 3
CONCESSION 4 (OTTAWA FRONT)
GEOGRAPHIC TOWNSHIP OF GLOUCESTER
CITY OF OTTAWA

FARLEY, SMITH & DENIS SURVEYING LTD. 2024

Scale 1: 150



Metric Note
Distances and/or coordinates on this plan are in metres and can be converted to feet by dividing by 0.3048.

Distance Note
Distances shown on this plan are ground distances and can be converted to grid distances by multiplying by the combined scale factor of 0.99996.

Bearing Note
Bearings hereon are grid bearings derived from the Can-Net Real Time Network and are referred to the Central Meridian of 114° 20' 00" West Longitude (Nad-83 Original).

For bearing comparisons, a rotation of 0°16'20" clockwise was applied to bearings on P2 & P5.

Elevation Notes
1. Elevations shown are geodetic and are referred to Geodetic Datum CGVD-1928 :1978.
2. It is the responsibility of the user of this information to verify that the job benchmark has not been altered or disturbed and that its relative elevation and description agrees with the information shown on this drawing.

Utility Notes
1. This drawing cannot be accepted as acknowledging all of the utilities and it will be the responsibility of the user to contact the respective utility authorities for confirmation.
2. Only visible surface utilities were located.
3. Underground utility data derived from City of Ottawa utility sheet reference: J-31-15, 6525p&p3, 6525p&p4, 16688p&p102, 17807Rdp&p07 & 17808Rdp&p08.
4. Sanitary and storm sewer inverts were compiled from: City of Ottawa Utility Sheets.
5. A field location of underground plant by the pertinent utility authority is mandatory before any work involving breaking ground, probing, excavating etc.
6. Not all overhead wires/transformers adjacent to the property have been located, the nearest overhead wire locations are shown on the plan.

- Notes & Legend**
- Survey Monument Planted
 - Survey Monument Found
 - SIB Standard Iron Bar
 - SSIB Short Standard Iron Bar
 - IB Iron Bar
 - (Wt) Witness
 - Meas Measured
 - (P1) Registered Plan 4M-1639
 - (P2) Plan by (990) dated May 17, 1989 (Ref. No. 81-89)
 - (P3) Plan by (990) dated May 20, 2004 (Ref. No. 04-070)
 - (P4) Plan by (AOC) dated March 16, 2020 (Job No. 18061-18)
 - (P5) Plan SR-6856
 - MH-ST Maintenance Hole (Storm)
 - MH-S Maintenance Hole (Sanitary)
 - ST Undergound Storm Sewer
 - S Undergound Sanitary Sewer
 - W Undergound Water
 - G Undergound Gas
 - B Undergound Bell
 - OW Overhead Wires
 - UP Utility Pole
 - CB Catch Basin
 - SBI Catch Basin Inlet
 - FH Fire Hydrant
 - WV Water Valve
 - GM Gas Meter
 - AC Air Conditioner
 - Diameter
 - Inv. Invert
 - T/G Top of Grate
 - U/Eave Underside of Eave
 - TpFdn Top of Foundation
 - C/L Centreline
 - + 65.00 Location of Elevations
 - + 65.00 Top of Concrete Curb Elevation
 - Property Line
 - Deciduous Tree - The Symbol shown denotes location and trunk diameter only. Size of its root system/overhead canopy may be smaller/larger than the symbol size depicted on this plan.
 - ★ Coniferous Tree - The Symbol shown denotes location and trunk diameter only. Size of its root system/overhead canopy may be smaller/larger than the symbol size depicted on this plan.

Site Area=1376.4 sq.m.

Overhead Wire Information			
Overhead Wire Elevations at Utility Pole A	Overhead Wire Elevations at SAG 'A'	Overhead Wire Elevations at Utility Pole B	Overhead Wire Elevations at Location 'B'
Top Wire = 103.23	Top Wire = 102.20	Top Wire = 102.27	Top Wire = 102.18
Bottom Wire = 100.19	Bottom Wire = 99.22	Bottom Wire = 99.21	Bottom Wire = 99.13

Surveyor's Certificate
I certify that:
1. This survey and plan are correct and in accordance with the Surveys Act, the Surveyors Act and the Regulations made under them.
2. The survey was completed on the 9th day of September, 2024.
Date Sep 25/2024
Emad Alrefaai
Ontario Land Surveyor

This plan of survey relates to AOLS Plan Submission Form Number V-80525
FARLEY, SMITH & DENIS SURVEYING LTD.

ONTARIO LAND SURVEYORS
CANADA LAND SURVEYORS
Unit 275, 30 COLONNADE ROAD, OTTAWA, ONTARIO K2E 7J6
TEL. (613) 727-8226 E-mail: info@fdsurveys.ca

