

LIST OF DRAWINGS

- L0.0 VALIDATING INFORMATION PLAN
- L1.0 LANDSCAPE PLAN
- L2.0 LANDSCAPE DETAILS

CONSULTANTS



MODULINK
25 GRANT ST, SUITE 102
OTTAWA, ON, K1Y 2W8



ARCADIS
Suite 500, 333 Preston
Street, K1S 5N4



PATERSON GROUP
9 AURIGA DRIVE,
OTTAWA, ON, K2E 7T9



D.B. GRAY ENGINEERING INC.
700 LONG POINT CIRCLE
OTTAWA, ON, K1T 4E9

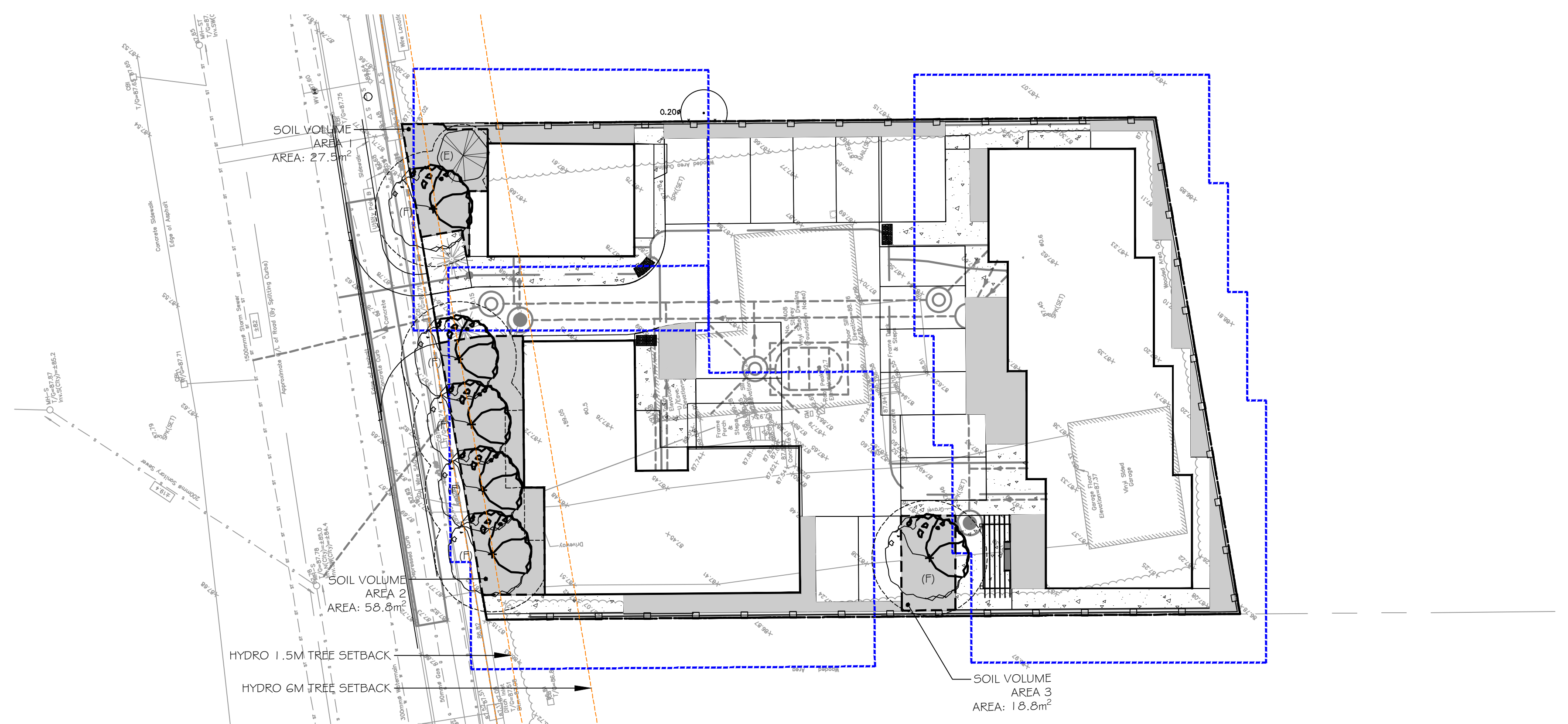


6408 RENAUD RD.

Urbantypology

UNIT 10-163 STERLING ROAD
TORONTO, ON, CANADA, M6R 2B2
PH: 437.700.5446

UNIT 101-45 SPENCER STREET
OTTAWA, ON, CANADA, K1Y 2P5
C: 613.867.3042 / P: 343.882.4918



Scale: 1:200

PROPERTY INFORMATION:

PLAN OF SURVEY	PART OF LOT 3 CONCESSION 4 (OTTAWA FRONT)
GEOGRAPHIC TOWNSHIP OF GLOUCESTER	CITY OF OTTAWA
SURVEYOR	FARLEY, SMITH & DENIS SURVEYING LTD.

PROPOSED SITE PERMEABLE SURFACES:

SITE AREA (m ²)	1376.4
PERMEABLE AREA (m ²)	230.0
PERCENTAGE PERMEABLE AREA (%)	16.7%

ESTIMATED 40 YEAR CANOPY PROJECTION:

SITE AREA (m ²)	1376.0
CANOPY AREA WITHOUT OVERLAPS (m ²)	185.0
CANOPY AREA PERCENTAGE (%)	13.4%

MINIMUM TREE PLANTING SETBACKS

CITY OF OTTAWA STANDARD ROW CROSS SECTIONS SHALL TAKE PRECEDENCE, WHERE NOT OTHERWISE DEFINED BY CODES OR BYLAWS, MINIMUM SETBACKS ARE AS FOLLOWS:	
STREET LIGHTS (LARGE TREES) - N/A	4.5m
STREET LIGHTS (SMALL TREES)	2.5m
HYDRO TRANSFORMERS	3.0m
PUBLIC STREETS	2.5m
SIDEWALKS, DRIVEWAYS, FENCES, NOISE BARRIERS	1.5m
FOR CONIFERS FROM PAVED SURFACES	4.5m
FIRE HYDRANTS	2.5m
UNDERGROUND SERVICES & UTILITIES	1.5m
TELECOM / CABLE PEDESTALS	1.0m

GENERAL NOTES:

- LANDSCAPE ARCHITECT AND/OR LANDSCAPE CONSULTANT HEREIN REFERS TO URBANTYPOLOGY INC.
- ALL PLANS IN METRIC UNLESS OTHERWISE NOTED.
- CONTRACTOR TO PROTECT ALL EXISTING ROADS, RIGHT OF WAYS, SIDEWALKS, CURBS, AND OTHER SITE ELEMENTS DURING CONSTRUCTION. AREAS DAMAGED DURING CONSTRUCTION TO BE REINSTATED AT CONTRACTORS OWN EXPENSE.
- CONTRACTOR IS RESPONSIBLE FOR VERIFYING LOCATION OF ALL SERVICES PRIOR TO ANY EXCAVATION. SHOULD CONFLICTS WITH SERVICES BE FOUND, CONTRACTOR TO NOTIFY LANDSCAPE CONSULTANT IMMEDIATELY. DAMAGE TO ANY SERVICES, BOTH ON AND OFF PROJECT SITE, TO BE REPAIRED AT CONTRACTORS OWN COST.
- ALL PLANT MATERIAL TO HAVE A 2 YEAR WARRANTY, FROM THE DATE OF SUBSTANTIAL COMPLETION.
- ALL PLANT MATERIAL SHALL BE NURSERY STOCK GROWN IN SAME HARDINESS ZONE AS PROJECT SITE.
- DECIDUOUS TREES TO HAVE MIN. 1800mm CLEAR STEM ABOVE GRADE.
- PROPOSED PLANT SUBSTITUTION REQUESTS ARE REQUIRED TO BE SUBMITTED TO THE LANDSCAPE CONSULTANT FOR REVIEW PRIOR TO SOURCING. PROPOSED SUBSTITUTIONS TO DEMONSTRATE EQUIVALENT CHARACTERISTICS.

REMOVALS AND PROTECTION NOTES:

- CONTRACTOR TO USE HYDROVAC AND HAND PRUNING TO ENSURE SUITABLE CONDITIONS FOR ROOT PRUNING.
- ROOTS OR BRANCHES THAT EXTEND BEYOND PRESCRIBED TREE PROTECTION ZONE SHOULD BE PRUNED BY A QUALIFIED ARBORIST (ISA CERTIFIED OR EQUIVALENT) OR OTHER TREE PROFESSIONAL AS APPROVED BY THE CITY OF OTTAWA. ALL PRUNING OF TREE ROOTS AND BRANCHES MUST BE IN ACCORDANCE WITH GOOD ARBORICULTURAL STANDARDS.
- TREES SHALL BE INSPECTED BY THE LANDSCAPE CONSULTANT OR CITY FORESTER REGULARLY FOR DAMAGE INCURRED DURING CONSTRUCTION TO ENSURE APPROPRIATE PRUNING OR OTHER MEASURES ARE IMPLEMENTED.
- TREES THAT HAVE DIED OR HAVE BEEN DAMAGED BEYOND REPAIR WILL BE REMOVED AND REPLACED WITH TREES OF AN EQUIVALENT SIZE AND SPECIES AS APPROVED BY THE LANDSCAPE ARCHITECT OR CITY OF OTTAWA.
- ALL DISTURBED AREAS TO BE RESTORED TO FINISHED CONDITION WITH 150MM TOPSOIL AND SOD OR SEED AS INDICATED.
- ALL NECESSARY CLEARING AND GRUBBING SHALL BE COMPLETED BY THE CONTRACTOR. REVIEW REMOVAL WITH LANDSCAPE ARCHITECT AND THE CITY OF OTTAWA PRIOR TO ANY TREE CUTTING.
- IF CUTTING OF ROOTS OR CHANGING OF GRADES AROUND EXISTING TREES IS SPECIFIED, FOLLOW APPROPRIATE DETAILS AS DIRECTED BY LANDSCAPE ARCHITECT.
- INSTALL TREE PROTECTION FENCE TO SATISFACTION OF THE LANDSCAPE CONSULTANT. TREE PROTECTION SHALL REMAIN UNTIL SUBSTANTIAL PERFORMANCE OF THE PROJECT OR UPON WRITTEN AUTHORIZATION FROM THE LANDSCAPE CONSULTANT.
- REFER TO TREE INFORMATION REPORT BY DENDRON FORESTRY SERVICES DATED DECEMBER 6TH, 2024

SOIL VOLUME TARGETS:

TREE SIZE	SOIL VOLUMES TARGETS	GRAPHIC
SMALL	(A) 20m ³ SINGLE TREE (B) 9m ³ MULTIPLE GROUPED TREES (C) 25m ³ IN SENSITIVE MARINE CLAY	
MEDIUM	(D) 25m ³ SINGLE TREE (E) 15m ³ MULTIPLE GROUPED TREES (F) 30m ³ IN SENSITIVE MARINE CLAY	
LARGE	(G) 30m ³ SINGLE TREE (H) 18m ³ MULTIPLE GROUPED TREES	
CONIFER	(D) 25m ³ SINGLE TREE (E) 15m ³ MULTIPLE GROUPED TREES	

SOIL VOLUMES TARGETS ARE PROJECTED AT: 1.0m DEPTH IN NON-MARINE CLAY SOILS, AND 1.5m DEPTH IN SENSITIVE MARINE CLAY SOILS

ESTIMATED 40 YR. CANOPY PROJECTIONS:

TREE SIZE	AVERAGED TREE CANOPY AREA (m ²) -USED FOR VALIDATION INFO-	GRAPHIC
SMALL	20.0m ² CANOPY / TREE	
MEDIUM	38.0m ² CANOPY / TREE	
LARGE	64.0m ² CANOPY / TREE	
CONIFER	20.0m ² CANOPY / TREE	

TREE CANOPY AREA USED FOR VALIDATION PURPOSES ARE PER: "CITY OF OAKVILLE, DEVELOPMENT APPLICATION GUIDELINES, 2057 CANOPY COVER PLAN AND CANOPY CALCULATION CHART, (FEB 2025)

SUMMARY OF PRESENT SOILS:

NON-MARINE CLAY	NO
LOW TO MEDIUM SENSITIVITY SILTY CLAY	YES
HIGH SENSITIVITY SILTY CLAY	NO

TREE PLANTING IN MARINE CLAY SOILS:

THE LANDSCAPE ARCHITECT INTENDS, BELIEVES AND HAS MADE REASONABLE EFFORT TO CONFORM WITH THE TREE-TO-FOUNDATION SETBACKS, SOIL VOLUMES, AND SURFACE-GRADING REQUIREMENTS OUTLINED IN:

- THE CITY OF OTTAWA'S GUIDELINES FOR TREE PLANTING IN SENSITIVE MARINE CLAY SOILS (2017), AND
- GEOTECHNICAL REPORT BY:
 - SECTION 6.8, PATERSON GROUP (REPORT PG7326-1, DATED DECEMBER 23, 2024).

TREE OWNERSHIP SUMMARY:

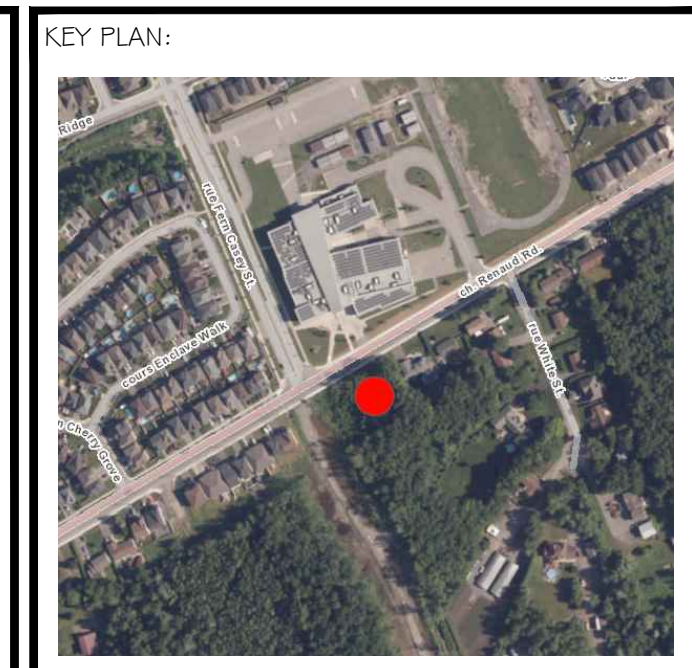
7 = PRIVATE OWNERSHIP
0 = CITY TREES

PLANT LIST

SYM	BOTANICAL NAME	COMMON NAME	QTY.	SIZE	REMARKS
MEDIUM DECIDUOUS TREES					
CO	CELTIS OCCIDENTALIS	COMMON HACKBERRY	2	70mm CAL	NATIVE
OV	OSTRYA VIRGINIANA	HOP HORNBEAM	2	70mm CAL	NATIVE
GD	GYMNOCLADUS DIOICUS 'ESPRESSO'	ESPRESSO KENTUCKY COFFEE TREE	1	70mm CAL	NATIVE- CULTIVAR
COLUMNAR DECIDUOUS TREES					
LT	LIRIODENDRON TULIPIFERA 'FASTIGIATA'	COLUMNAR TULIP TREE	1	70mm CAL	NATIVE- CULTIVAR
CONIFEROUS TREES					
PS	PINUS STROBUS	EASTERN WHITE PINE	1	1800mm HT	NATIVE
SHRUBS					
PO	PHYSCARPUS OPULIFOLIUS 'NANUS'	DWARF NINEBARK	TBD	2 GAL	SPACE AS SHOWN
PM	PINUS MUGO	MUGO PINE	TBD	2 GAL	SPACE AS SHOWN
GRASSES AND PERENNIALS					
PV	PANICUM VIRGATUM 'NORTHWIND'	NORTHWIND SWITCH GRASS	TBD	1 GAL	SPACE AS SHOWN
AT	AMSONIA HUBRICHTII	ARKANSAS BLUE START	TBD	1 GAL	SPACE AS SHOWN
NF	NEPETA FAASSENII	CAT MINT	TBD	1 GAL	SPACE AS SHOWN
RF	RUDBEKIA FULGIDA 'GOLDSTRUM'	GOLDSTRUM RUDBECKIA	TBD	1 GAL	SPACE AS SHOWN

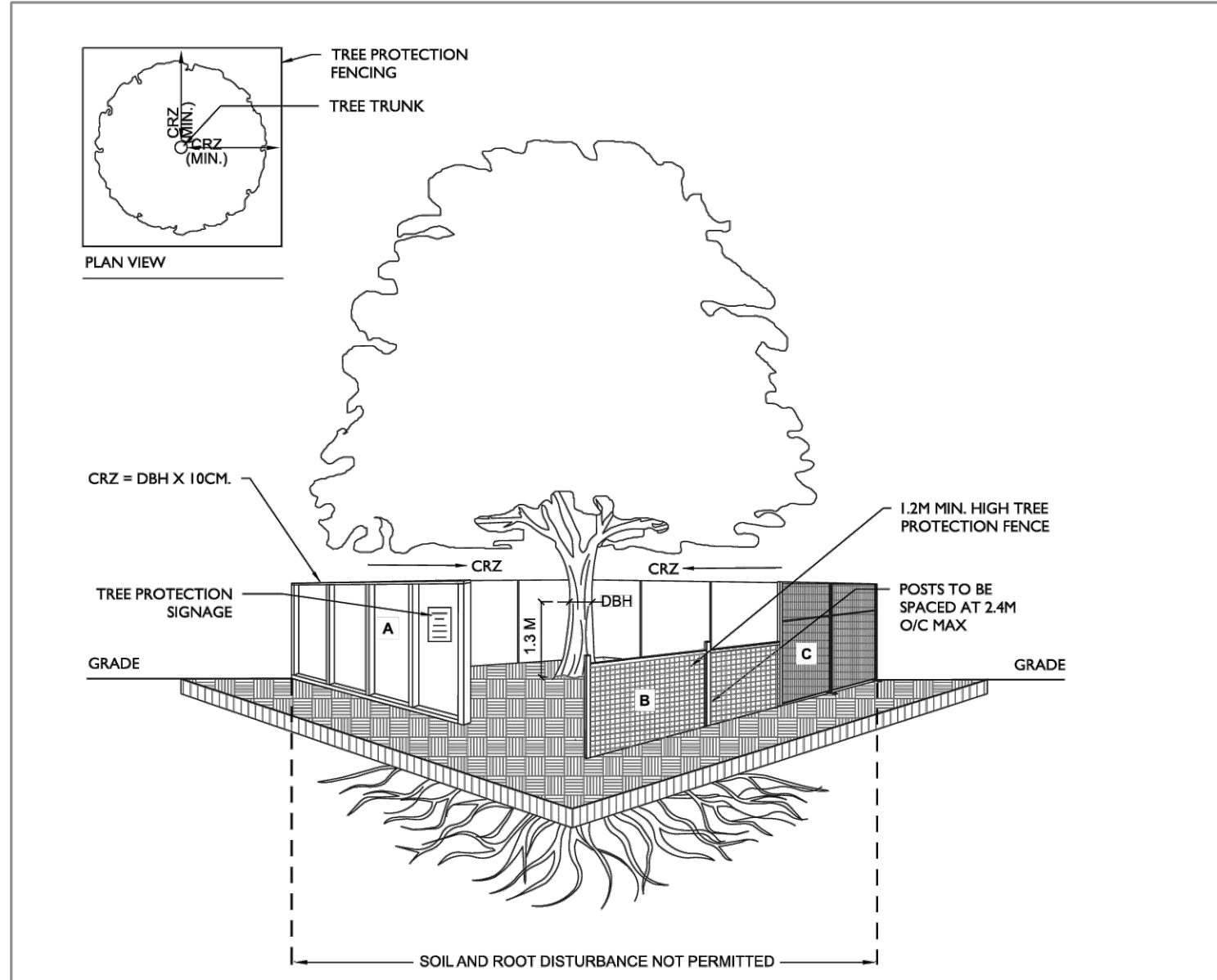
SOIL VOLUME AND CANOPY COVER BY PLAN REGION:

AREA NO.	TREE QUANTITIES	PROVIDED SOIL AREA (m ²)	PROVIDED SOIL VOLUME (m ³)	OTTAWA TARGET SOIL VOLUME FOR LISTED TREES (m ³)	PERCENTAGE SOIL VOLUME PROVIDED VS TARGET
EX.	SUM OF TREES SIZES	VALUE A	VALUE B = VALUE A X SOIL DEPTH	VALUE C	VALUE B / VALUE C X 100%
1	1 MEDIUM 1 CONIFER	27.5	41.3	45	91.7%
2	4 MEDIUM	58.8	88.2	120	73.5%
3	1 MEDIUM	18.8	28.2	30	94.0%
TOTAL	7 TREES	105.1	157.7	195.0	80.8%



Urbantypology
 UNIT 101: 163 STERLING ROAD, TORONTO, ON CANADA, M4R 2B2
 PH: 437.700.3446
 UNIT 101: 45 SPENCER STREET, OTTAWA, ON CANADA, K1Y 2P5
 C: 613.867.3042 / P: 343.882.4978

- LEGEND:
- PROPERTY LIMIT
 - SOIL VOLUME LIMIT
 - 4.5M MARINE CLAY SOIL SETBACK
 - TREE PROTECTION FENCING
 - HARD LANDSCAPING
 - SOFT LANDSCAPING
 - EXISTING TREE (TO REMAIN)
 - 40 YEAR CANOPY PROJECTION



- NOTES:
- TREE PROTECTION FENCING TO BE INSTALLED PER F-8011 AND PER THE TREE CONSERVATION REPORT (TCR), THE TREE INFORMATION REPORT (TIR) OR AS INDICATED IN THE CONTRACT DRAWINGS.
 - TREE PROTECTION FENCING MUST BE AT LEAST 1.2M IN HEIGHT AND BE CONSTRUCTED OF RIGID OR FRAMED MATERIALS SUCH AS:
 - A. PLYWOOD HOARDING
 - B. SNOW FENCE
 - C. MODULAR STEEL PANELS
 - INSTALLATION OF ALL FENCING TYPES, A, B OR C, MUST MINIMIZE DAMAGE TO EXISTING ROOTS.
 - CRITICAL ROOT ZONE (CRZ) TO BE MEASURED FROM OUTSIDE OF THE TREE BASE
 - DIAMETER AT BREAST HEIGHT (DBH) TO BE MEASURED AT HEIGHT OF 1.3M FROM GROUND

Ottawa TITLE: TREE PROTECTION FENCING DATE: FEB 2013
 REV: JAN 2026
 DWG No: F7

01 ISSUED FOR SPC 25 MAY, 2026
 NO.: REVISION: DATE:

ALL MEASUREMENTS ARE IN MILLIMETERS UNLESS SPECIFIED OTHERWISE. DO NOT SCALE THE DRAWINGS. ALL DRAWINGS TO BE READ IN CONJUNCTION WITH CONTRACT SPECIFICATIONS.
 COPYRIGHT RESERVED. THIS DRAWING IS THE EXCLUSIVE PROPERTY OF URBANTYPOLOGY INC. AND SHALL NOT BE REPRODUCED OR USED FOR PURPOSES OTHER THAN INTENDED BY THE OWNER, WITHOUT PERMISSION.
 THIS DRAWING SHALL ONLY BE USED FOR CONSTRUCTION WHEN FIRED WITH A PROFESSIONAL SEAL AND SIGNATURE BY THE LANDSCAPE ARCHITECT. IT IS THE RESPONSIBILITY OF THE CONTRACTOR TO:
 • REPORT ALL DIMENSIONS AND CONDITIONS ON SITE.
 • REPORT ALL ERRORS AND/OR OMISSIONS TO THE CONTRACT ADMINISTRATOR.
 • COMPLY WITH ALL PERTINENT CODES, BYLAWS AND LAWS.
 • VERIFY LOCATION OF ALL UNDERGROUND SERVICES AND UTILITIES WITH RESPECTIVE AUTHORITIES PRIOR TO COMMENCEMENT OF WORK.

PROJECT: 6408 RENAUD RD.

LOCATION: 6408 RENAUD RD. OTTAWA, ON

DRAWN: SM START DATE: 16 MAR, 2026
 CHECKED: SM

DRAWING: LANDSCAPE VALIDATING INFO

SCALE: PAGE SIZE:

PROJECT NUMBER: SHEET NO.:

L0.0

