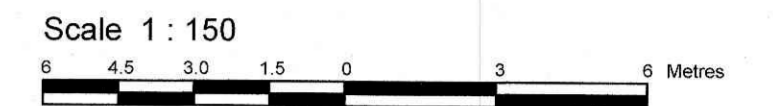


LOTS 11 AND 12 AND PART OF LOTS 3 AND 4 BLOCK 'K' REGISTERED PLAN 102 CITY OF OTTAWA

Surveyed by Annis, O'Sullivan, Vollebek Ltd.



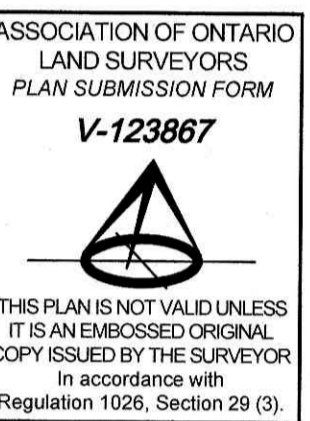
Metric DISTANCES SHOWN ON THIS PLAN ARE IN METRES AND CAN BE CONVERTED TO FEET BY DIVIDING BY 0.3048

Surveyor's Certificate

I CERTIFY THAT: 1. This survey and plan are correct and in accordance with the Surveys Act, the Surveyors Act and the regulations made under them. 2. The survey was completed on the 10th day of December, 2025.

DEC. 10, 2025 Date

Mirel Aradau Ontario Land Surveyor



Notes & Legend

- Legend symbols for various features: Survey Monument Planted, Survey Monument Found, Standard Iron Bar, Short Standard Iron Bar, Iron Bar, Cut Cross, Concrete Pin, Witness, Measured, Annis, O'Sullivan, Vollebek Ltd., Registered Plan 102, Plan 4R-28427, (AOG) Plan dated October 28, 2024, (JD5) Plan dated November 4, 2014, (1952) Plan dated July 6, 2018, Plan 4R-2172, (1287) Plan dated August 25, 1998, (647) Plan dated March 30, 1961, Plan 4R-14876, Chain Link Fence, Board Fence, Stone Retaining Wall, Timber Retaining Wall, Centreline, Cedar Hedge, West Face Noted, North Face Noted, Top of Grade, Catch Basin, Maintenance Hole (Storm Sewer), Maintenance Hole (Sanitary), Valve Chamber (Watermain), Fire Hydrant, Water Valve, Overhead Wires, Utility Pole, Hydro Meter, Gas Meter, Air Conditioner, Gate, Wood Pole, Metal Pole, Monitoring Well, Solland, Sign, Shrub, Deciduous Tree, Coniferous Tree, Location of Elevations, Location of Top of Curb Elevations, Location of Top of Wall Elevations.

Bearings are grid, derived from Can-Net 2016 Real Time Network GPS observations and are referenced to Specified Control Points: 01/Fan: 03880005 and 01919580105, MTM Zone 9 (78°30' West Longitude) NAD-83 (original).

ELEVATION NOTES

1. Elevations shown are geodetic and are referred to the CGVD28 geodetic datum. 2. It is the responsibility of the user of this information to verify that the job benchmark has not been altered or disturbed and that its relative elevation and description agrees with the information shown on this drawing.

UTILITY NOTES

1. This drawing cannot be accepted as acknowledging all of the utilities and it will be the responsibility of the user to contact the respective utility authorities for confirmation. 2. Only visible surface utilities were located. 3. A field location of underground plant by the pertinent utility authority is mandatory before any work involving breaking ground, probing, excavating, etc.

Topographic data was collected under Winter Conditions. Snow cover and ice preclude determining location and elevation of some topographical data that is otherwise visible.

