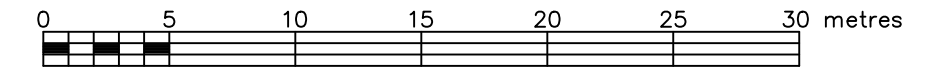


SKETCH SHOWING AS-BUILT MANHOLES AND CULVERTS

## 2940 MER BLEUE ROAD CITY OF OTTAWA

FARLEY, SMITH & DENIS SURVEYING LTD. 2025

Scale 1: 300



### Metric Note

Distances and coordinates on this plan are in metres and can be converted to feet by dividing by 0.3048.

### Boundary Note

Boundary information derived from a Topographic Plan of Survey by Farley, Smith & Denis Surveying Ltd. dated September 10, 2021 (File No. 410-21).

### Elevation Notes

- Elevations shown are geodetic and are referred to Geodetic Datum CGVD-1928 :1978.
- Elevations derived from Vertical Benchmark 001196530229 having a published elevation of 86.120m.
- It is the responsibility of the user of this information to verify that the job benchmark has not been altered or disturbed and that its relative elevation and description agrees with the information shown on this drawing.

### Utility Notes

- This drawing cannot be accepted as acknowledging all of the utilities and it will be the responsibility of the user to contact the respective utility authorities for confirmation.
- Only new surface utilities were located.
- A field location of underground plant by the pertinent utility authority is mandatory before any work involving breaking ground, probing, excavating etc.

### Geographic Location

PART OF LOT 1  
CONCESSION 4 (OTTAWA FRONT)  
GEOGRAPHIC TOWNSHIP OF GLOUCESTER  
CITY OF OTTAWA

### Notes & Legend

○ MH-ST	Denotes	Maintenance Hole (Storm)
— ST —	"	Underground Storm Sewer
— CPP —	"	Corrugated Plastic Pipe
∅	"	Diameter
Inv.	"	Invert
T/G	"	Top of Grate
T/P	"	Top of Pipe
C/L	"	Centreline
+ 65.00	"	Location of Elevations
—	"	Property Line

Fieldwork completed on the 8th of December 2025.

### Caution

- This is not a plan of survey and shall not be used except for the purpose indicated in the title block.
- This sketch is protected by copyright.

**WARNING** NO PERSON MAY COPY, REPRODUCE, DISTRIBUTE OR ALTER THIS PLAN IN WHOLE OR IN PART WITHOUT THE WRITTEN PERMISSION OF FARLEY, SMITH & DENIS SURVEYING LTD.  
© FARLEY, SMITH & DENIS SURVEYING LTD., 2025.

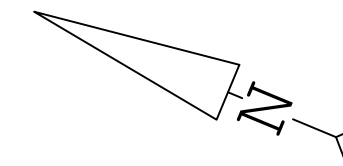
**FARLEY, SMITH & DENIS SURVEYING LTD.**

ONTARIO LAND SURVEYORS  
CANADA LAND SURVEYORS

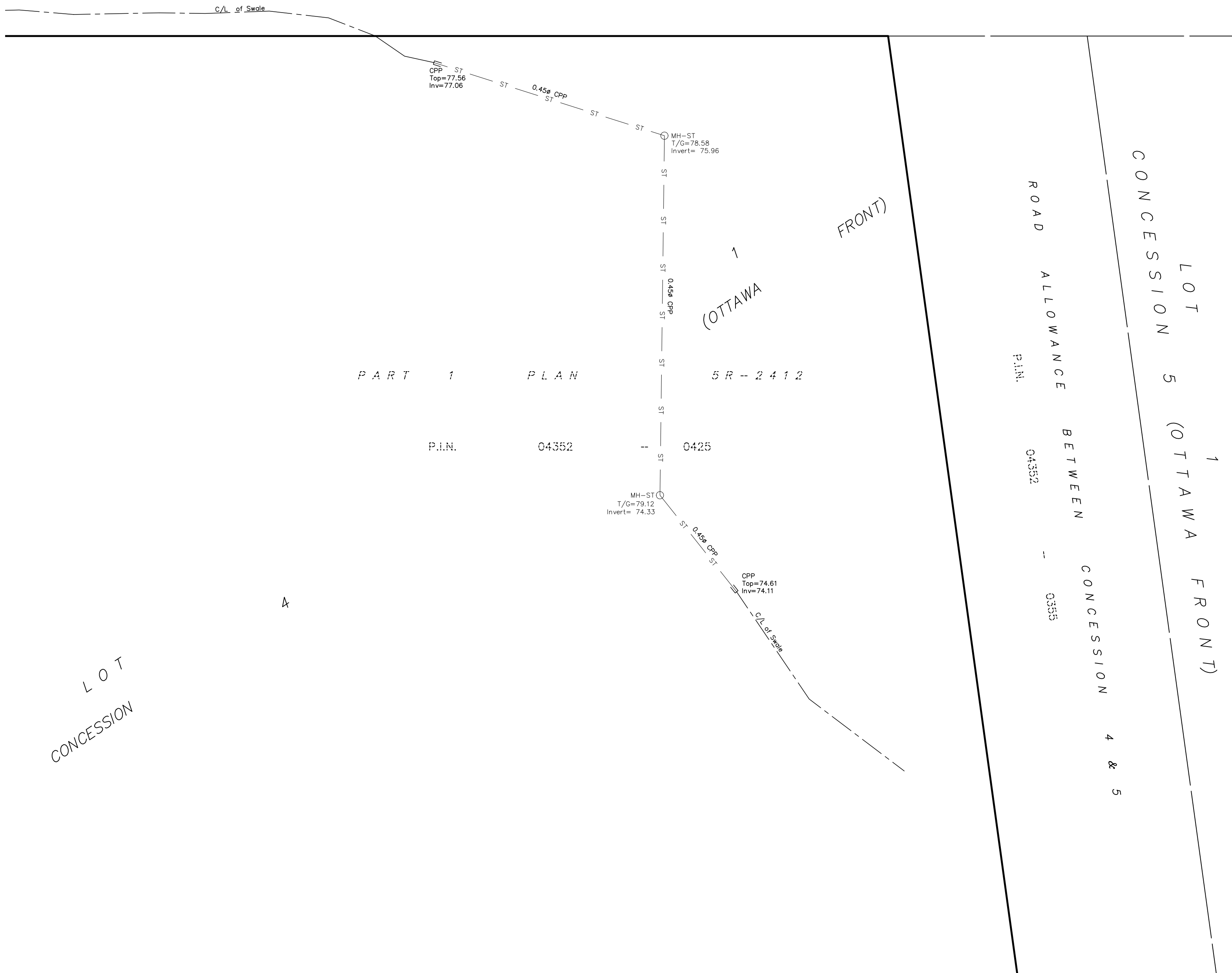
Unit 275, 30 COLONNADE ROAD, OTTAWA, ONTARIO K2E 7J6  
TEL. (613) 727-8226 E-mail: info@fstdsurveys.ca

FILE No.: 357-25

Site Benchmark  
Fire Hydrant  
Top of Spindle  
At 2727 Mer  
Bleue Road  
Elevation=82.39



MER BLEUE ROAD  
ROAD ALLOWANCE BETWEEN TOWNSHIPS OF GLOUCESTER AND CUMBERLAND  
P.I.N. 04352 -- 0444



PART 1 PLAN 5R-14020  
P.I.N. 04352 -- 0340