

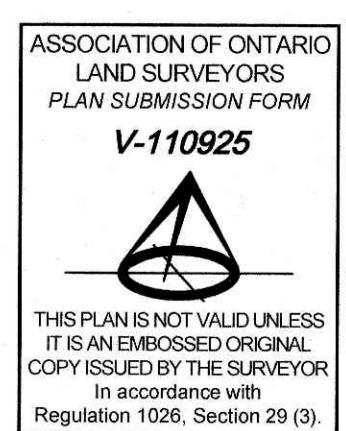
PART OF BLOCK 8 AND PART OF LOT 27 AND LOTS 26 AND 23 REGISTERED PLAN 221 CITY OF OTTAWA

Surveyed by Annis, O'Sullivan, Vollebakk Ltd.

Scale 1 : 200

Metric DISTANCES SHOWN ON THIS PLAN ARE IN METRES AND CAN BE CONVERTED TO FEET BY DIVIDING BY 0.3048

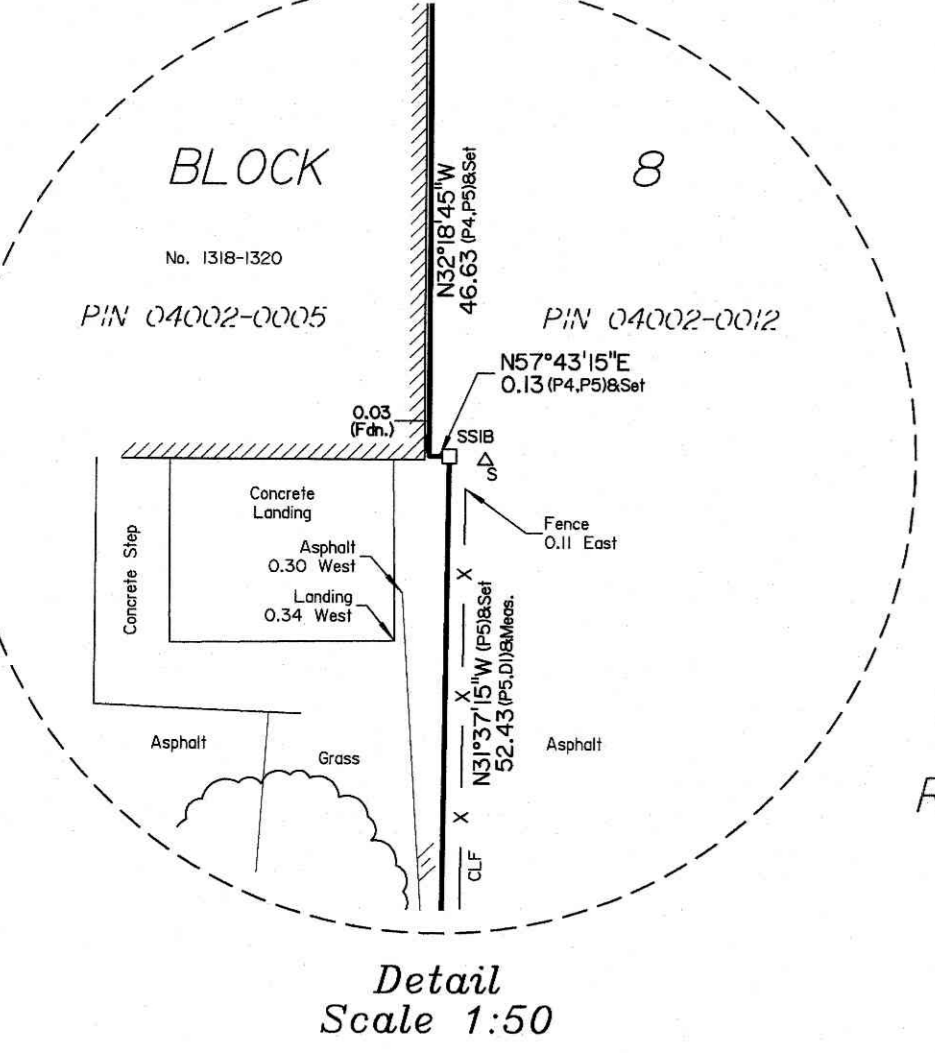
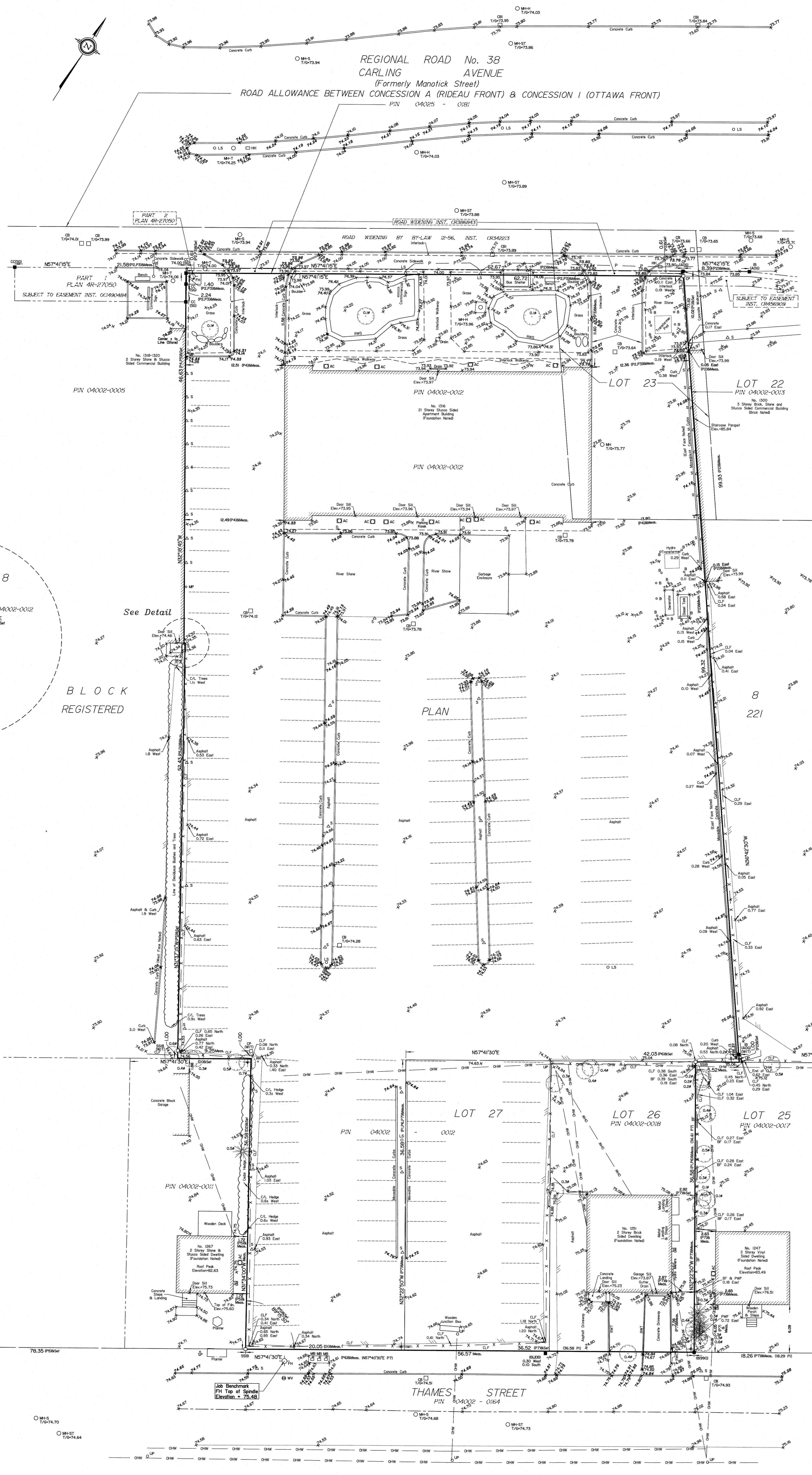
Surveyor's Certificate I CERTIFY THAT: 1. This survey and plan are correct and in accordance with the Survey Act, the Surveyors Act and the regulations made under them. 2. The survey was completed on the 4th day of August, 2025. Date: August 15, 2025



- Notes & Legend: Denotes Survey Monument Planted, SIB Standard Iron Bar, SSB Short Standard Iron Bar, IB Iron Bar, CP Concrete Pin, CC Cut Cross, (WIT) Witness, Meas. Measured, (AOG) Annis, O'Sullivan, Vollebakk Ltd., (P1) Registered Plan 221, (P2) (AOC) Plan dated May 16, 2025, (P3) Plan 4R-27050, (P4) (AOG) Plan dated September 7, 2012, (P5) (725) Plan dated January 30, 1991, (P6) (857) Plan dated February 25, 1985, (P7) (JDB) plan dated November 11, 2022, (DI) Inst. CR877427, (D2) Inst. N555503, CLF Chain Link Fence, BF Board Fence, PWF Post and Wire Fence, RWS Stone Retaining Wall, RWT Timber Retaining Wall, CAL Centreline, T/C Top of Curb, CB Catch Basin, MB Catch Basin Inlet, MH-MST Maintenance Hole (Storm Sewer), MH-S Maintenance Hole (Sanitary), MH-T Maintenance Hole (Traffic), MH-H Maintenance Hole (Hydro), MH-U Maintenance Hole (Unidentified), HH Handhole, FH Fire Hydrant, W Water Valve, WP Water Stand Post, TL Traffic Light, UP Utility Pole, AN Anchor, LS Light Standard, OWP Overhead Wires, U Underground Power, GM Gas Meter, HM Hydro Meter, AC Air Conditioner, MB Mail Box, G Gate, D Drain, B Boltard, S Sign, SP Metal Post, DT Deciduous Tree, C Coniferous Tree, D Diameter, L Location of Elevations, C Location of Top of Curb Elevations, W Location of Top of Wall Elevations

ELEVATION NOTES 1. Elevations shown are geoidic, derived from City of Ottawa Vertical Control Monument No. N-29 (index No. 86), having a published elevation of 77.347 metres, and are referred to the CGVD25 geoidic datum. 2. It is the responsibility of the user of this information to verify that the job benchmark has not been altered or disturbed and that its relative elevation and description agrees with the information shown on this drawing.

UTILITY NOTES 1. This drawing cannot be accepted as acknowledging all of the utilities and it will be the responsibility of the user to contact the respective utility authorities for confirmation. 2. Only visible surface utilities were located. 3. A field location of underground plant by the pertinent utility authority is mandatory before any work involving breaking ground, probing, excavating, etc.



ARCHIBALD STREET