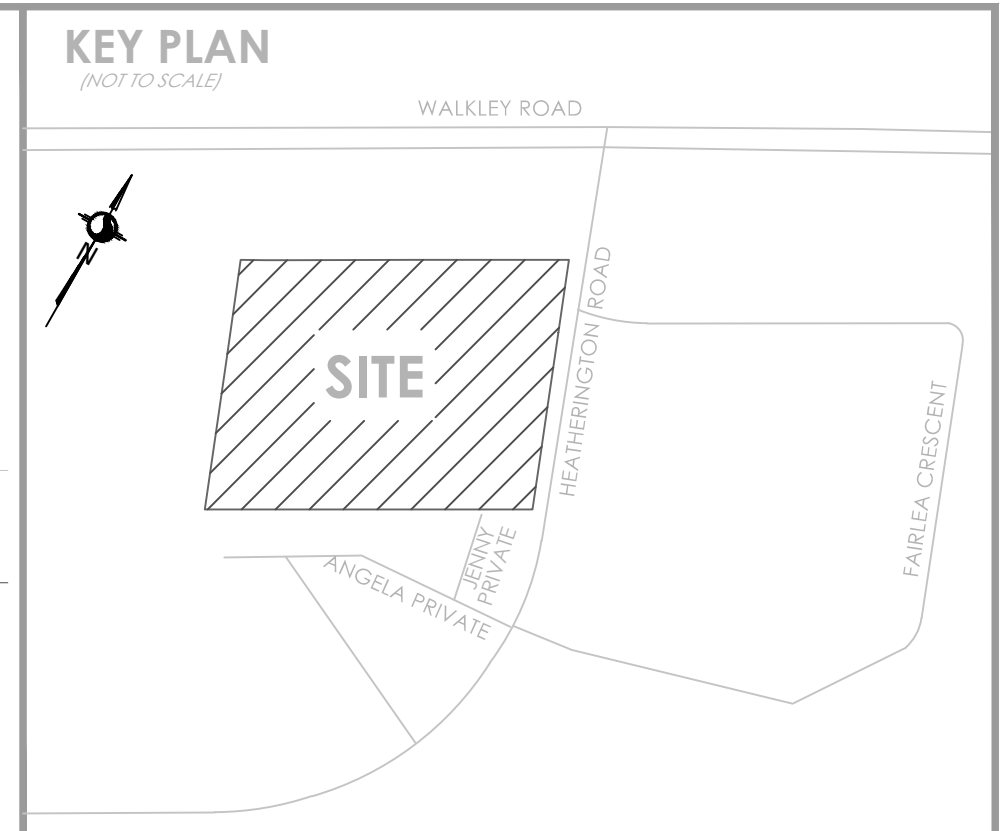


SUBJECT TO THE CONDITIONS, IF ANY, SET FORTH IN OUR LETTER DATED _____, THIS DRAFT PLAN IS APPROVED BY THE CITY OF OTTAWA UNDER SECTION 51 OF THE PLANNING ACT THIS _____ DAY OF _____, 20____.

ALLISON HAMLIN, MCIP, RPP, ACTING MANAGER
DEVELOPMENT REVIEW-ALL WARDS
PLANNING, DEVELOPMENT AND BUILDING SERVICES DEPARTMENT, CITY OF OTTAWA



DRAFT PLAN OF SUBDIVISION OF
**PART OF LOT A
CONCESSION 4 (RIDEAU FRONT)**
(GEOGRAPHIC TOWNSHIP OF GLOUCESTER)

CITY OF OTTAWA
Scale 1:500
Stantec Geomatics Ltd.

METRIC CONVERSION
DISTANCES AND COORDINATES SHOWN ON THIS PLAN ARE IN METRES AND CAN BE CONVERTED TO FEET BY DIVIDING BY 0.3048

**INFORMATION REQUIRED:
UNDER SECTION 51 (17) OF THE PLANNING ACT R.S.O 1990**

- (A)-AS SHOWN ON DRAFT PLAN
- (B)-AS SHOWN ON DRAFT PLAN
- (C)-AS SHOWN ON DRAFT AND KEY PLANS
- (D)-SEE PROPOSED LAND USE SCHEDULE (BELOW)
- (E)-AS SHOWN ON DRAFT PLAN
- (F)-AS SHOWN ON DRAFT PLAN
- (G)-SEE PLANNING RATIONALE
- (H)-AS SHOWN ON DRAFT PLAN
- (I)-CITY WATER AVAILABLE
- (J)-SEE SOIL REPORT
- (K)-SEE TOPOGRAPHIC INFORMATION
- (L)-ALL CITY SERVICES AVAILABLE
- (M)-NO EASEMENT REGISTERED ON TITLE

SCHEDULE OF LAND USE			
BLOCK	USE	UNITS	AREA (Ha/ac)
1 & 12	APARTMENTS	90	0.435/1.07
5 & 6	SEMI-DETACHED	4	0.125/0.31
2, 3, 4, 7, 9, 10, 11 & 13	TOWNHOMES	64	1.044/2.59
8	ACCESS		0.058/0.14
14	PARK		0.324/0.80
15	EXISTING CLUBHOUSE		0.473/1.17
ROAD			0.757/1.87
TOTAL		158	3.218/7.95

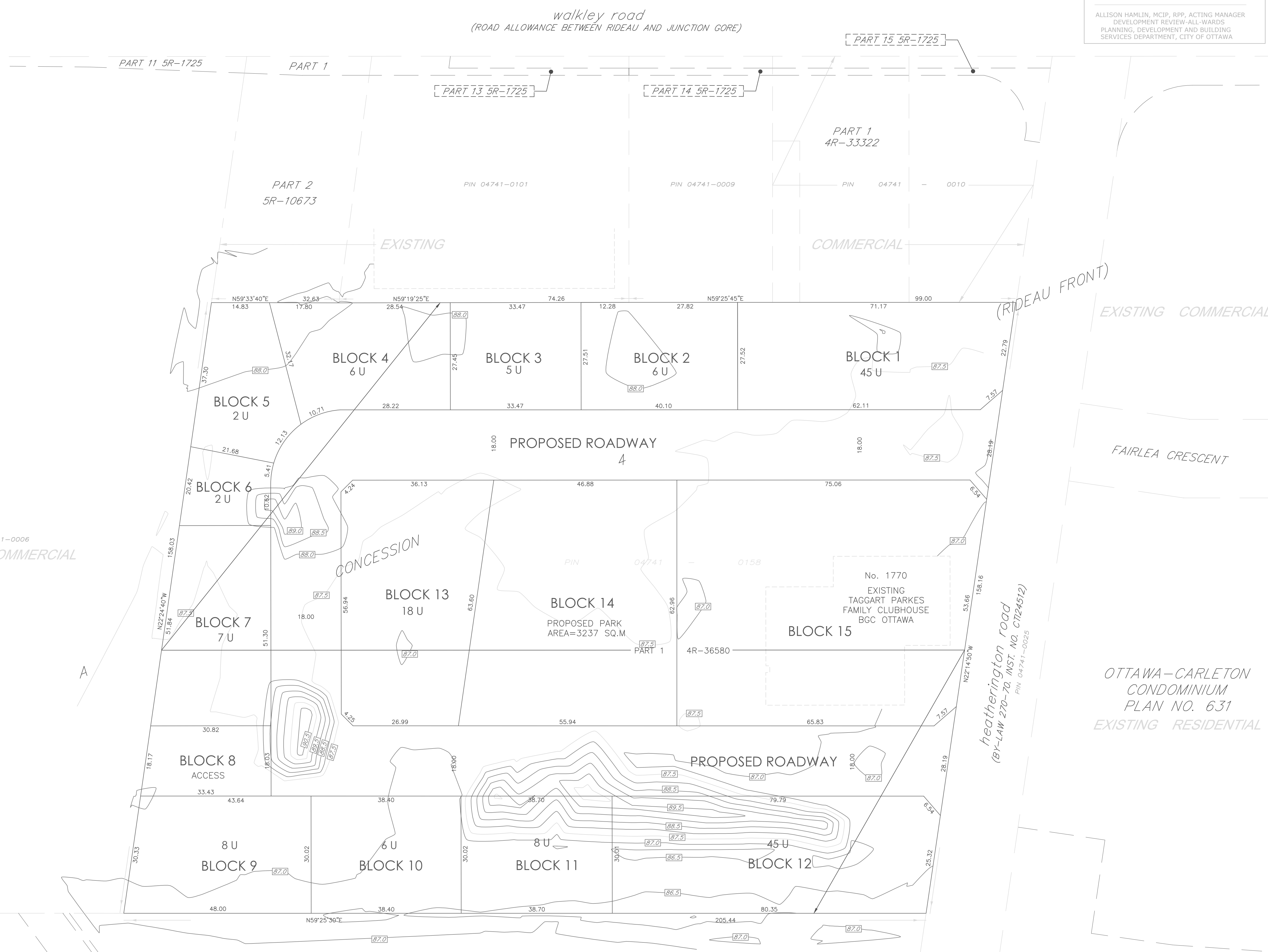
OWNER'S CERTIFICATE
I HEREBY AUTHORIZE STANTEC GEOMATICS LTD. TO SUBMIT THIS DRAFT PLAN OF SUBDIVISION ON MY BEHALF

DATE _____ DAVID WHITE
CITY CLERK
CITY OF OTTAWA
I HAVE THE AUTHORITY TO BIND THE CORPORATION

SURVEYOR'S CERTIFICATE
I HEREBY CERTIFY THAT THE BOUNDARIES OF THE SUBJECT LANDS AND THEIR RELATIONSHIP TO ADJOINING LANDS HAVE BEEN ACCURATELY AND CORRECTLY SHOWN.

DATE _____ FRANCIS LAU
ONTARIO LAND SURVEYOR

Stantec Geomatics Ltd.
CANADA LANDS SURVEYORS
ONTARIO LAND SURVEYORS
1331 CLYDE AVENUE, SUITE 300
OTTAWA, ONTARIO, K1C 3G4
TEL: 416-722-4420
stantec.com



PIN 04741-0006
EXISTING COMMERCIAL

EXISTING COMMERCIAL

FAIRLEA CRESCENT

OTTAWA-CARLETON
CONDOMINIUM
PLAN NO. 631
EXISTING RESIDENTIAL

heatherington road
(BY-LAW 270-70, INST. NO. C7124512)
PIN 04741-0025

walkley road
(ROAD ALLOWANCE BETWEEN RIDEAU AND JUNCTION GORE)

CARLETON
CONDOMINIUM
PLAN NO. 211
PIN 15211-001 TO PIN 15211-0088
EXISTING RESIDENTIAL

OTTAWA-CARLETON
CONDOMINIUM
PLAN NO. 628
EXISTING RESIDENTIAL

PART 4
5R-11612

PART 8
5R-2056

PART 9
5R-2056

lot 1
CONCESSION 4
(RIDEAU FRONT)