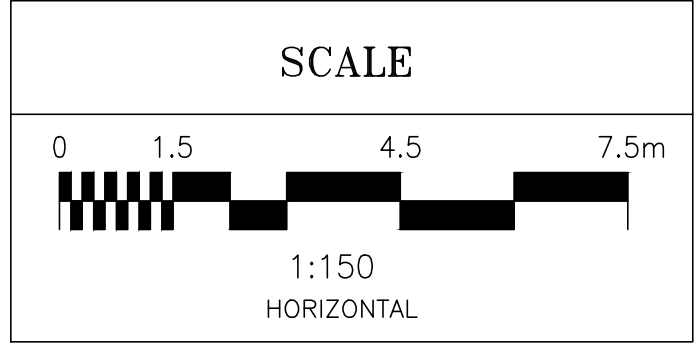
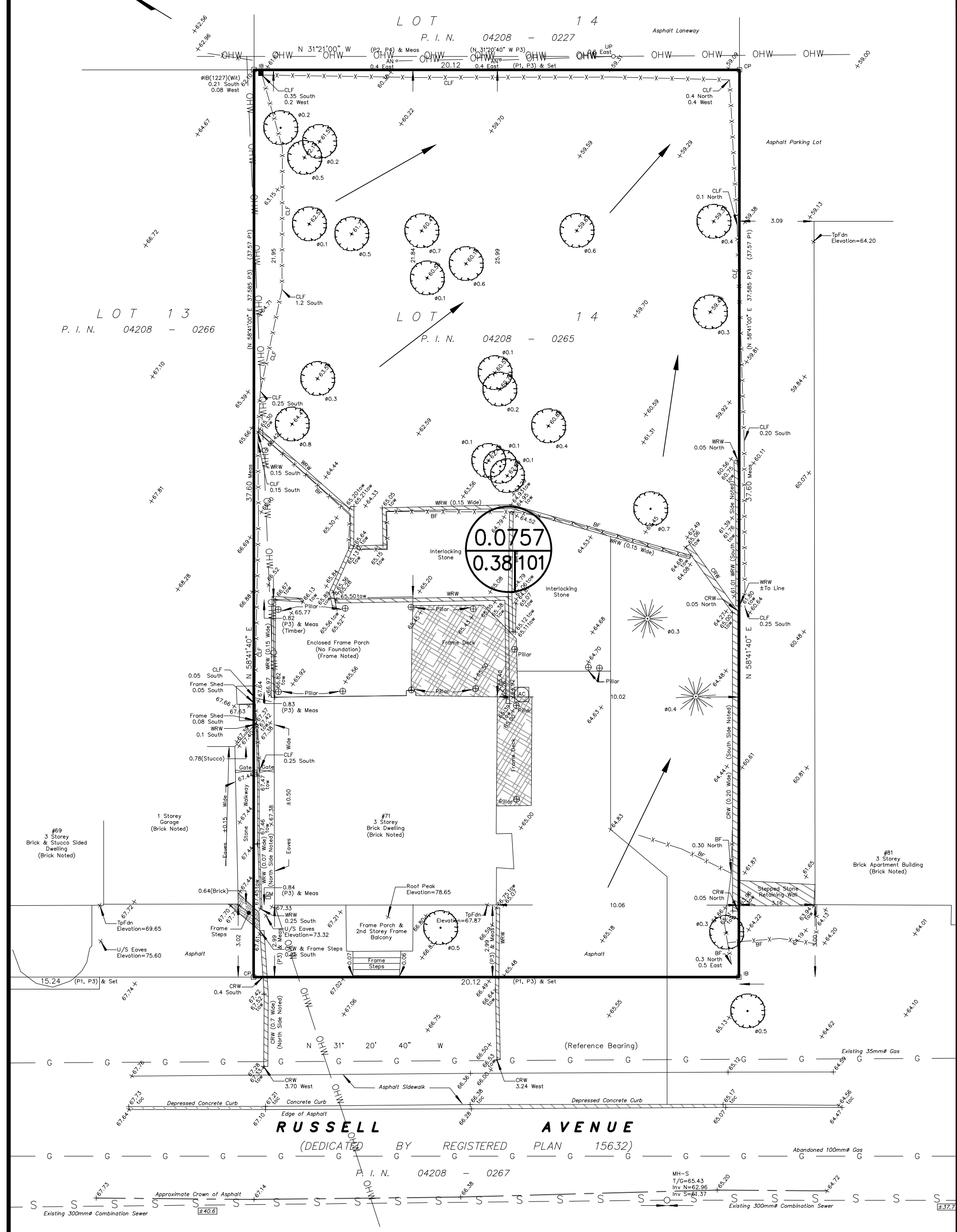




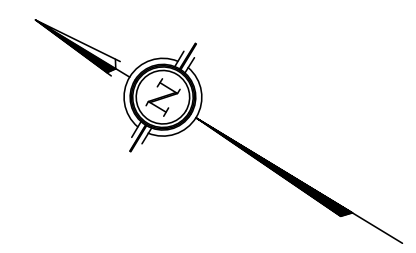
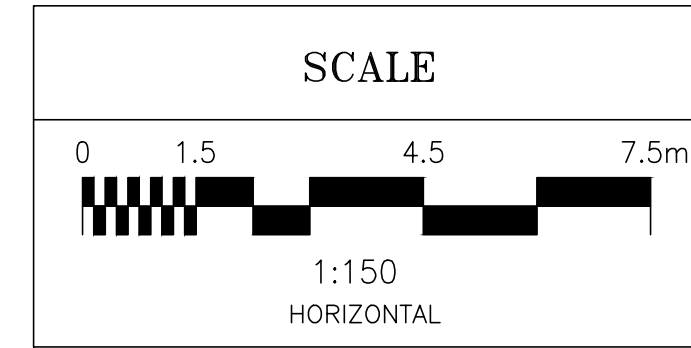
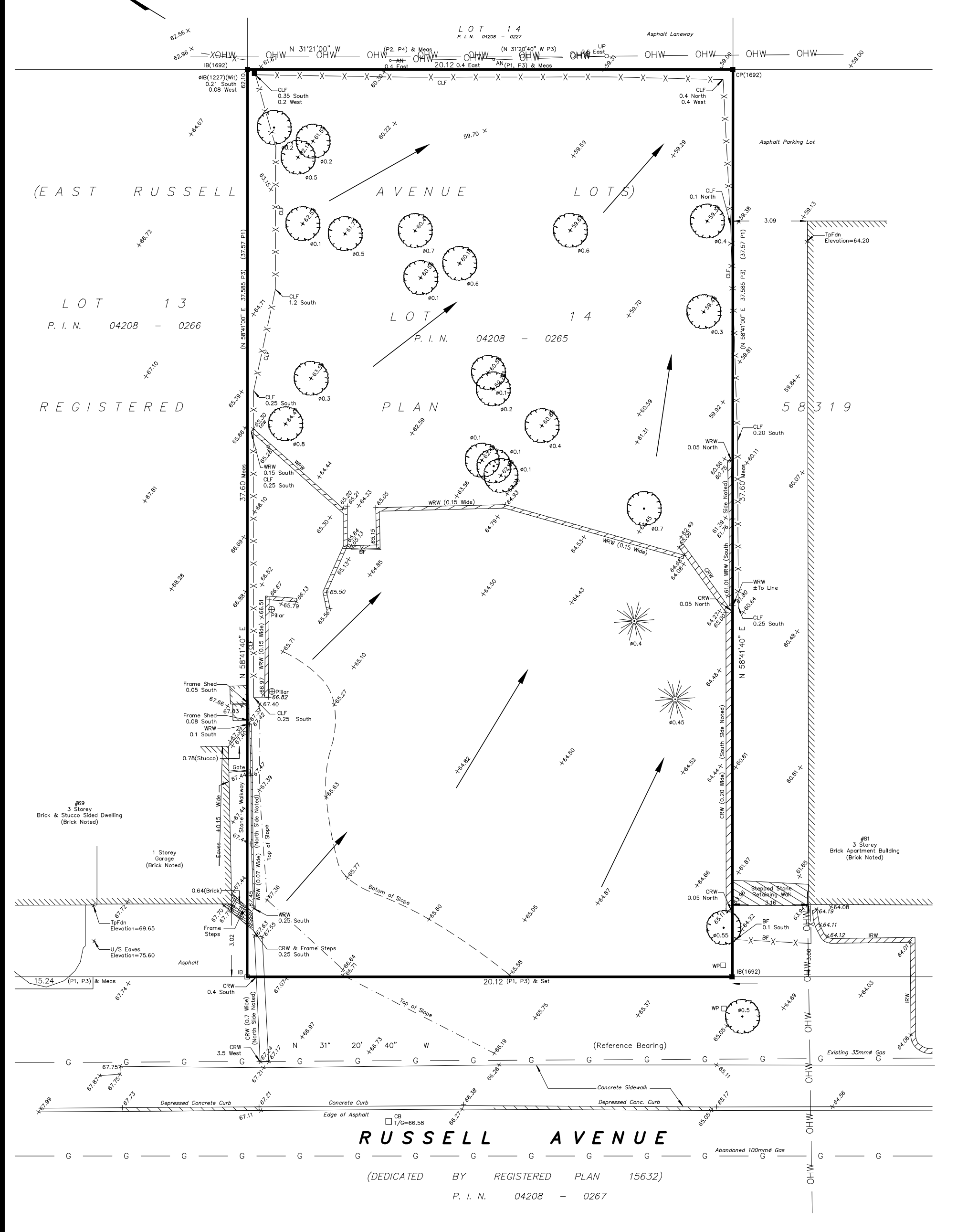
- LEGEND**
- RD#1 PROPOSED ROOF DRAIN NUMBER AND LOCATION
 - SC PROPOSED ROOF SCUPPER LOCATION
 - PROPOSED GENERAL DIRECTION OF LOT GRADING AND SURFACE FLOW
 - · · · · · PROPOSED HIGH RIDGE LINE
 - PROPOSED MAJOR OVERLAND FLOW ROUTE
 - ☒ PROPOSED CONCRETE SPLASH PAD LOCATION FOR ROOF DRAIN WATER OUTLET AND DISCHARGE
 - 0.03 / 0.9 | 1 DRAINAGE AREA IN HECTARES
DRAINAGE NODE NUMBER
 - COEFFICIENT OF RUNOFF
 - UN-CONTROLLED DRAINAGE AREA
 - CONTROLLED DRAINAGE AREA

- NOTES**
- NODE #1, NODE #2, NODE #3, AND NODE #4 REPRESENTS. BUILDING ROOF AREA (SWM CONTROLLED AREA).
 - NODE #5 REPRESENTS UNCONTROLLED DRAINAGE AREA DRAINING TO THE FRONT OF THE LOT.
 - NODE #6 REPRESENTS UNCONTROLLED DRAINAGE AREA DRAINING TO THE REAR OF THE LOT.
 - NODE #101 REPRESENTS PRE-DEVELOPMENT DATA FROM 2025.
 - NODE #102 REPRESENTS PRE-DEVELOPMENT DATA FROM 2017.

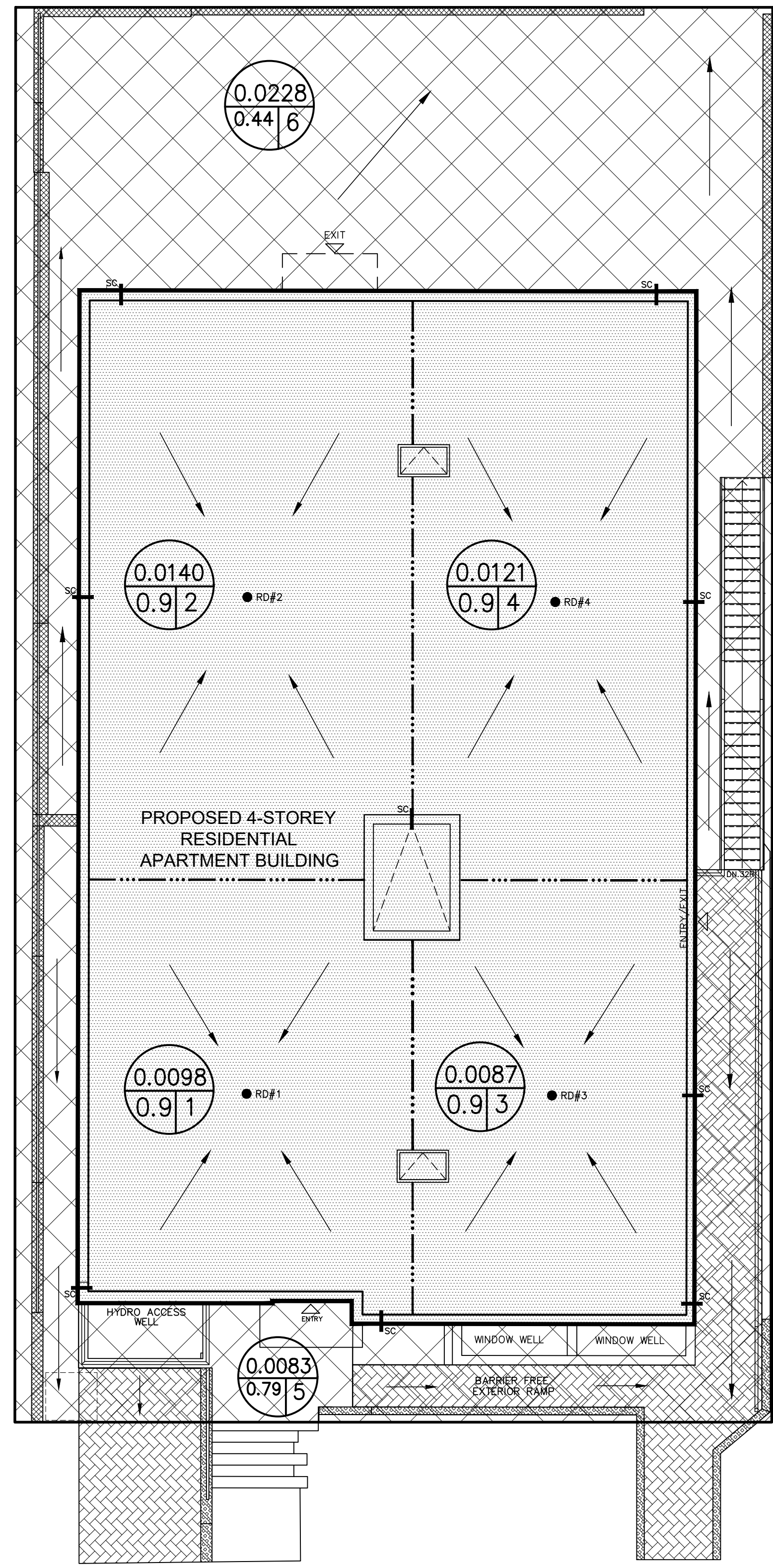
PRE - DEVELOPMENT STORM DRAINAGE AREA FROM 2017 TOPOGRAPHICAL SURVEY



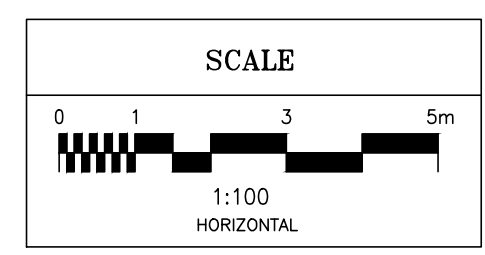
PRE - DEVELOPMENT STORM DRAINAGE AREA FROM 2025 TOPOGRAPHICAL SURVEY



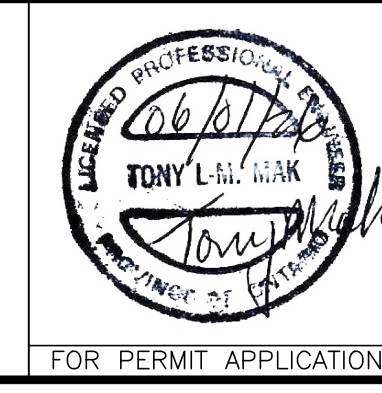
POST DEVELOPMENT STORM DRAINAGE AREA



RUSSELL AVENUE



No.	REVISION	DATE	BY
3	REVISIONS AS PER ARCHITECT'S LATEST REVISED SITE PLAN OF MAY 26, 2026	05/27/26	T.L.M.
2	ISSUED FOR BUILDING PERMIT	05/15/26	T.L.M.
1	REVISIONS AS PER ARCHITECT'S REVIEW COMMENTS AND REVISED SITE PLAN OF APRIL 10, 2026	04/14/26	T.L.M.



DESIGN	T.L.M.
CHECKED	T.L.M.
DRAWN BY	P.M.
CHECKED	T.L.M.
APPROVED	T.L.M.

PROJECT
71 RUSSELL AVENUE
LOT 14
EAST SIDE OF RUSSELL AVENUE
REGISTERED PLAN 58319
CITY OF OTTAWA

DRAWING TITLE
STORM DRAINAGE AREA PLAN

T.L. MAK ENGINEERING CONSULTANTS LTD. CONSULTING ENGINEERS	
PROJECT No.	825-96
DATE	DECEMBER 2025
DRAWING No.	D-1