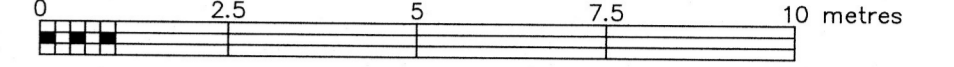


LOT 14 EAST SIDE OF RUSSELL AVENUE REGISTERED PLAN 58319 CITY OF OTTAWA

FARLEY, SMITH & DENIS SURVEYING LTD. 2025

Scale 1: 100



Metric Note

Distances and coordinates on this plan are in metres and can be converted to feet by dividing by 0.3048.

Distance Note

Distances shown on this plan are ground distances and can be converted to grid distances by multiplying by the combined scale factor of 0.99995.

Bearing Note

Bearings are grid and are referred to the Easterly limit of Russell Avenue having a bearing of N 31° 20' 40" W as shown on Plan SR-10824 by (AOG) dated July 14, 2025, and are referred to the Central Meridian (76° 30' West Longitude) MTM Nad-83 (Original) Zone 9.

Elevation Notes

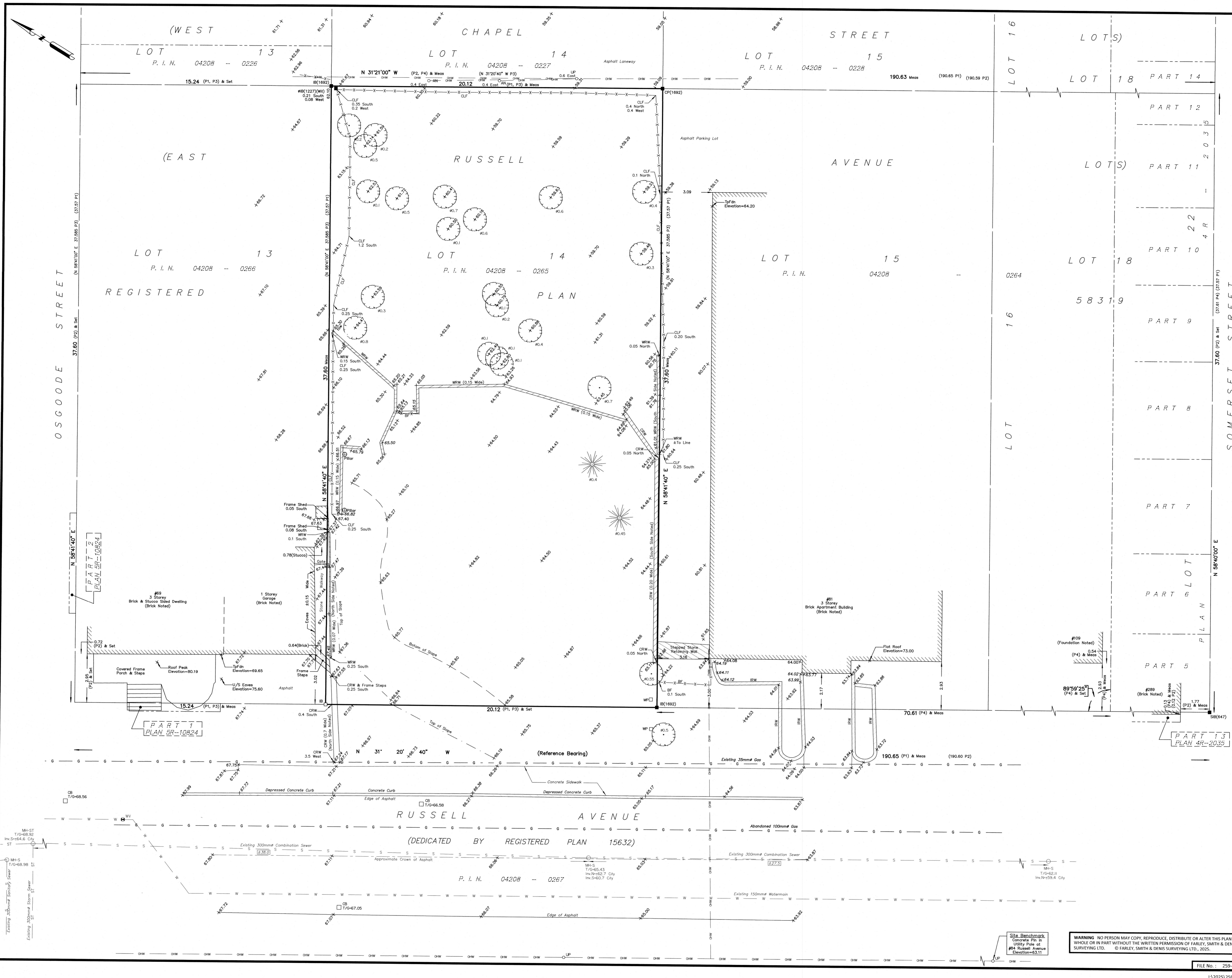
- 1. Elevations shown are geodetic and are referred to Geodetic Datum CGVD-1928 :1978.
2. Elevations derived from a Site Benchmark shown on a Plan by (AOG) dated October 11th, 2016 having an elevation of 60.24 metres (Job No. 19233-16).
3. It is the responsibility of the user of this information to verify that the job description has not been altered or disturbed and that its relative elevation and description agrees with the information shown on this drawing.

Utility Notes

- 1. This drawing cannot be accepted as acknowledging all of the utilities and it will be the responsibility of the user to contact the respective utility authorities for confirmation.
2. Only visible surface utilities were located.
3. Underground utility data derived from City of Ottawa utility sheet reference: 1999 (Sheet 1 of 2), E-14-10, E-14-15 and 7563 (Sheet 1).
4. Sanitary and storm sewer grades and inverts were compiled from: Field measurement and City of Ottawa's Geographic Information Database.
5. A field location of underground plant by the pertinent utility authority is mandatory before any work involving breaking ground, probing, excavating etc.

Notes & Legend

Table with 2 columns: Symbol and Denotes. Includes symbols for Survey Monument Planted, Survey Monument Found, Standard Iron Bar, Short Standard Iron Bar, Iron Bar, Round Iron Bar, Concrete Pin, Witness, Meas, Registered Plan 58319, Plan By (AOG) Dated July 14, 2015, Plan By (1319) Dated March 11, 1987, Plan By (1319) Dated May 2, 1989, Maintenance Hole (Storm), Maintenance Hole (Sanitary), Underground Storm Sewer, Underground Sanitary Sewer, Underground Water, Overhead Wires, Underground Gas, Utility Pole, Anchor, Invert, Top of Grate, Top of Foundation, Underside of Eaves, Gas Meter, Air Conditioner, Diameter, Chain Link Fence, Board Fence, Centreline, Wood Post, Wood Retaining Wall, Concrete Retaining Wall, Stone Retaining Wall, Interlock Retaining Wall, Location of Elevations, Top of Concrete Curb/Retaining Wall Elevation, Property Line, Deciduous Tree, Coniferous Tree.



Surveyor's Certificate

- 1. I certify that:
1. This survey and plan are correct and in accordance with the Surveys Act, the Surveyors Act and the Regulations made under them.
2. The survey was completed on the 8th day of September, 2025.

Date: Sep 11/25 Daniel Robinson Ontario Land Surveyor

This plan of survey relates to AOLS Plan Submission Form Number V-109491 FARLEY, SMITH & DENIS SURVEYING LTD.

ONTARIO LAND SURVEYORS CANADA LAND SURVEYORS Unit 275, 30 COLONNADE ROAD, OTTAWA, ONTARIO K2E 7J6 TEL. (613) 727-8226 E-mail: info@fstdsurveying.ca