

Copyright Reserved

The Contractor shall verify and be responsible for all dimensions. DO NOT scale the drawing - any errors or omissions shall be reported to Stantec without delay.
The Copyrights to all designs and drawings are the property of Stantec. Reproduction or use for any purpose other than that authorized by Stantec is forbidden.

Legend

- 99.99 ORIGINAL GROUND ELEVATION
- 99.99 PROPOSED ELEVATION
- 99.99 PROPOSED LOT CORNER ELEVATION
- EXISTING LOT CORNER ELEVATION
- 2.0% FLOW DIRECTION AND GRADE
- FFE=100.00 FINISHED FIRST FLOOR ELEVATION
- USF=97.00 UNDERSIDE OF FOOTING ELEVATION
- ENGINEERED FILL REQUIRED
- TERRACING 3:1 SLOPE MAXIMUM (UNLESS OTHERWISE SHOWN)
- DIRECTION OF EMERGENCY OVERLAND FLOW
- PROPOSED VALVE BOX
- PROPOSED VALVE CHAMBER
- PROPOSED FIRE HYDRANT
- PROPOSED SANITARY SEWER MANHOLE
- PROPOSED STORM SEWER MANHOLE
- PROPOSED CATCHBASIN MANHOLE
- PROPOSED CATCHBASIN
- PROPOSED CB 1
- PROPOSED AREA DRAIN TO CONNECT TO INTERNAL PLUMBING
- PROPOSED DEPRESSED CURB LOCATION
- PROPOSED BARRIER CURB
- PROPOSED HEAVY DUTY ASPHALT
- OVERLAND SPILL LOCATION
- TWSI LOCATION AS PER CITY STD
- ASPHALT RE-INSTATEMENT AREA

Notes

- RIGID PAVEMENT STRUCTURE - LOWER LEVEL
125mm RIGID CONCRETE PAVEMENT - 32MPa CONCRETE WITH AIR ENTRAINMENT
300mm OPSS GRANULAR 'A' BASE
- PAVEMENT STRUCTURE - CAR PARKING ONLY
50mm HL-3 OR SUPERPAVE 12.5 ASPHALTIC CONCRETE
150mm OPSS GRANULAR 'A' BASE
300mm OPSS GRANULAR 'B' TYPE II
- PAVEMENT STRUCTURE - ACCESS LANES AND HEAVY TRUCKS
40mm HL-3 OR SUPERPAVE 12.5 ASPHALTIC CONCRETE
50mm HL-8 OR SUPERPAVE 19.0 ASPHALTIC CONCRETE
150mm OPSS GRANULAR 'A' BASE
450mm OPSS GRANULAR 'B' TYPE II

Revision	By	Appd.	YY.MM.DD
0 ISSUED FOR SPA	MJS	DT	25.10.17

Permit-Seal

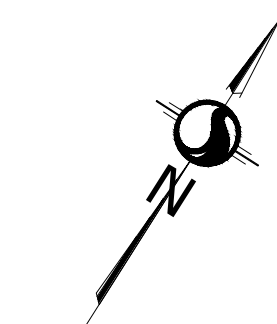
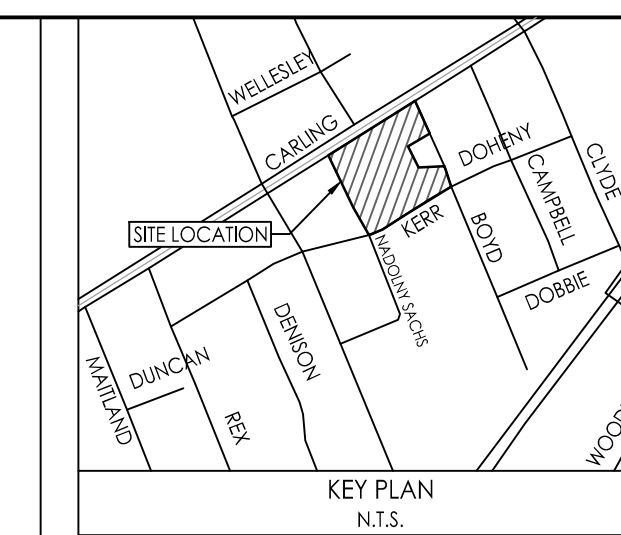
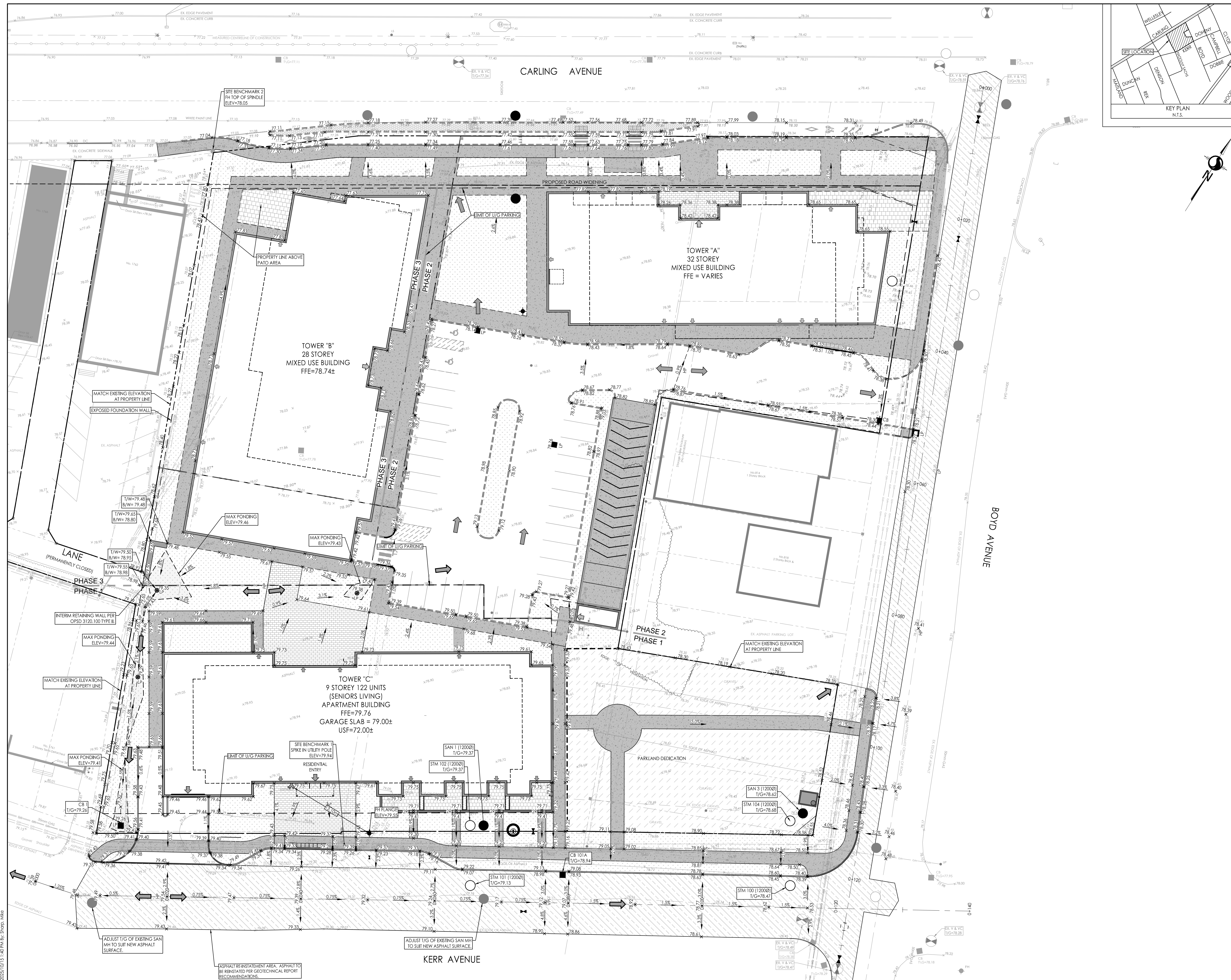
Client/Project
THE PROPERTIES GROUP

1746 CARLING AVENUE
9 STOREY APARTMENT BUILDING
OTTAWA, ON, CANADA

Title
GRADING PLAN
ULTIMATE CONDITION

Project No. 160401895	Scale 1:250	0 2.5 7.5 12.5m
Drawing No.	Sheet	Revision

GP-2 6 of 11 0



2025.10.13 160401895 Design Drawing Detailed Design Drawings\160401895 D8.dwg
 2025.10.13 160401895 Design Drawing