

LOTS 47 AND 48
SOUTH MACLAREN STREET
REGISTERED PLAN 15558
CITY OF OTTAWA

Surveyed by Annis, O'Sullivan, Vollebek Ltd.



Metric
DISTANCES SHOWN ON THIS PLAN ARE IN METRES AND CAN BE CONVERTED TO FEET BY DIVIDING BY 0.3048

Surveyor's Certificate

- I CERTIFY THAT:
- This survey and plan are correct and in accordance with the Survey Act and the Surveyors Act and the regulations made under them.
 - The survey was completed on the 10th day of March, 2025.

Date: March 10, 2025
Signature: Andrew Shelep
Ontario Land Surveyor

Notes & Legend

Denotes	
—○—	Survey Monument Planted
—■—	Survey Monument Found
SIB	Standard Iron Bar
SSIB	Short Standard Iron Bar
IB	Iron Bar
CC	Cut Cross
CP	Concrete Pin
(WIT)	Witness
Meas.	Measured
Acc.	Accepted
Prop.	Proposed
(AOG)	Annis, O'Sullivan, Vollebek Ltd.
(P1)	Registered Plan 15558
(P2)	(AOG) Plan Dated March 2, 1987
(P3)	Carleton Condominium Plan 273
(P4)	Plan SR-7408
(P5)	Plan 4R-19482
(P7)	(AOG) Plan Dated February 1, 1994
(P9)	(857) Plan Dated November 24, 1972
(P10)	(JDB) Plan Dated April 6, 2016
(P11)	(647) Plan Dated August 19, 1971
(P12)	(1692) Plan Dated September 19, 2013
(P13)	(647) Field Notes Dated May 31, 1971
(P14)	(671) Plan November 6, 1987
—OHV—	Overhead Wires
○MH-S	Maintenance Hole (Sanitary)
○UP	Utility Pole
□CB	Catch Basin
○B	Bollard
△S	Sign
BF	Board Fence
+ 65.00	Location of Elevations
+ 65.00	Top of Concrete Curb Elevation
C/L	Centreline
○	Deciduous Tree
○FH	Fire Hydrant
CRW	Concrete Retaining Wall
○PO-M	Metal Pole
○TB-B	Bell Terminal Box
T/G	Top of Grate
GM	Gas Meter

Topographic data was collected under Winter Conditions. Snow cover and ice preclude determining location and elevation of some topographical data that is otherwise visible.

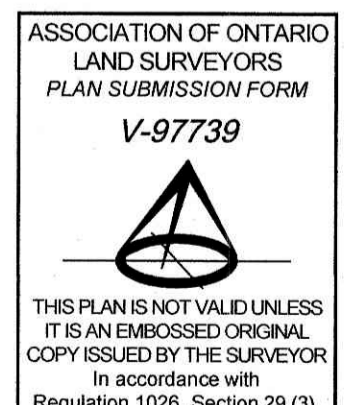
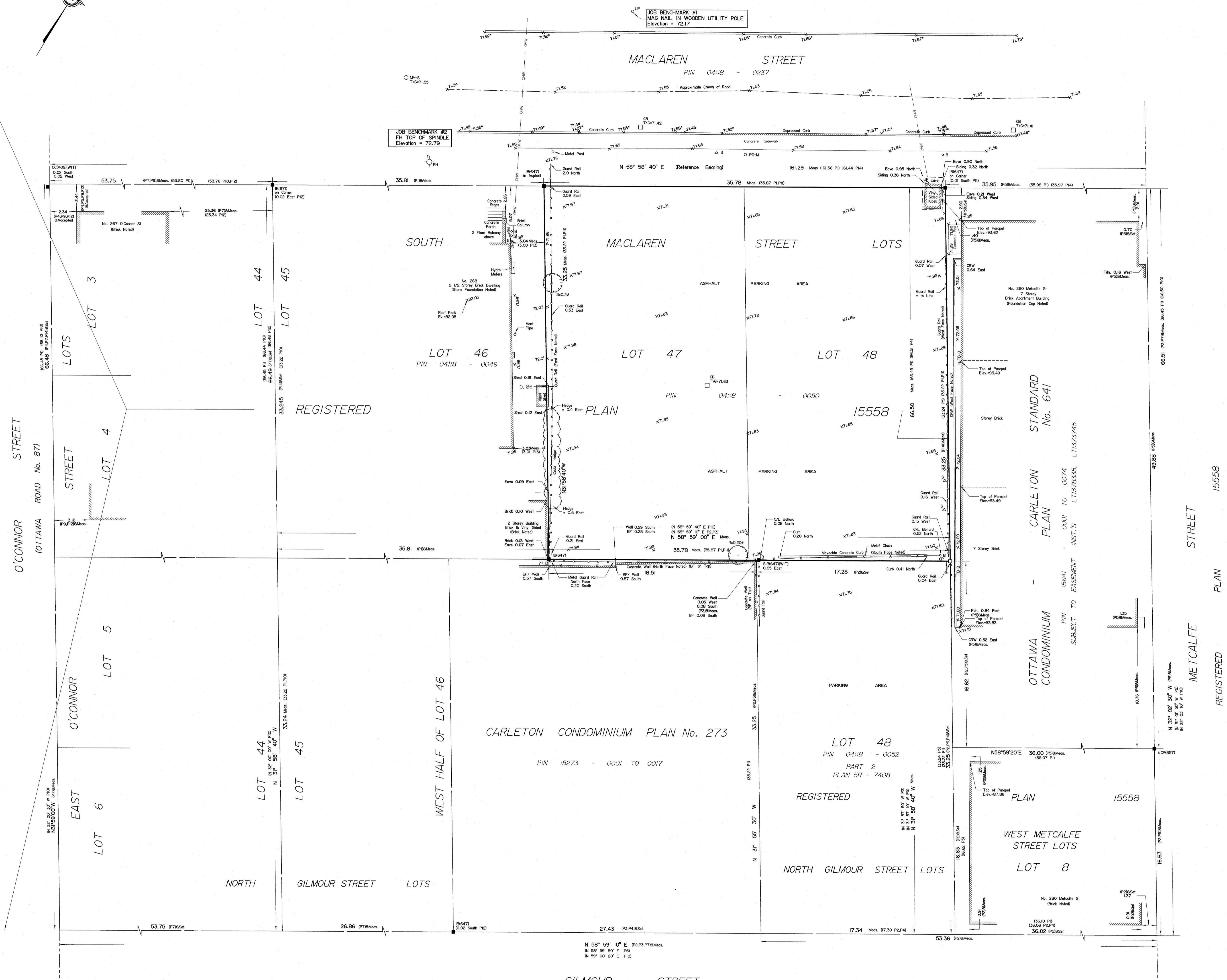
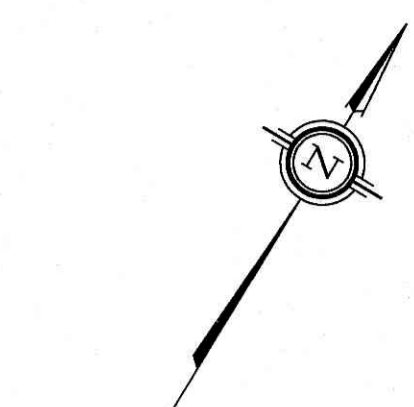
ELEVATION NOTES

- Elevations shown are geodetic and are referred to the CGVD28 geodetic datum, derived from Geodetic Survey of Canada Benchmark No. 3818 having an elevation of 70.385 metres.
- It is the responsibility of the user of this information to verify that the job benchmark has not been altered or disturbed and that its relative elevation and description agrees with the information shown on this drawing.

Bearings are grid, derived from Can-Nel 2016 Real Time Network GPS observations, MTM Zone 9 (78°30' West Longitude) NAD-83 (CSRS) (2010).

For bearing comparisons, a rotation of 1°39'20" counter-clockwise was applied to bearings on plans P2, P3, P7, 1°38'10" counter-clockwise was applied to bearings on plan P10, 1°38'40" counter-clockwise was applied to bearings on plans P5.

SITE AREA = 1189 m²



THIS PLAN IS NOT VALID UNLESS IT IS AN EMBOSSED ORIGINAL COPY ISSUED BY THE SURVEYOR IN accordance with Regulation 1028, Section 29 (3).