



1994 SCOTT STREET



LIST OF DRAWINGS

- L1.1 LANDSCAPE MASTER PLAN
- L1.2 LANDSCAPE ENLARGEMENT 1
- L1.3 LANDSCAPE ENLARGEMENT 2
- L1.4 LANDSCAPE ENLARGEMENT 3
- L1.5 LANDSCAPE ENLARGEMENT 4
- L2.0 LANDSCAPE SECTIONS
- L3.0 LANDSCAPE DETAILS 1
- L3.1 LANDSCAPE DETAILS 2

CONSULTANTS

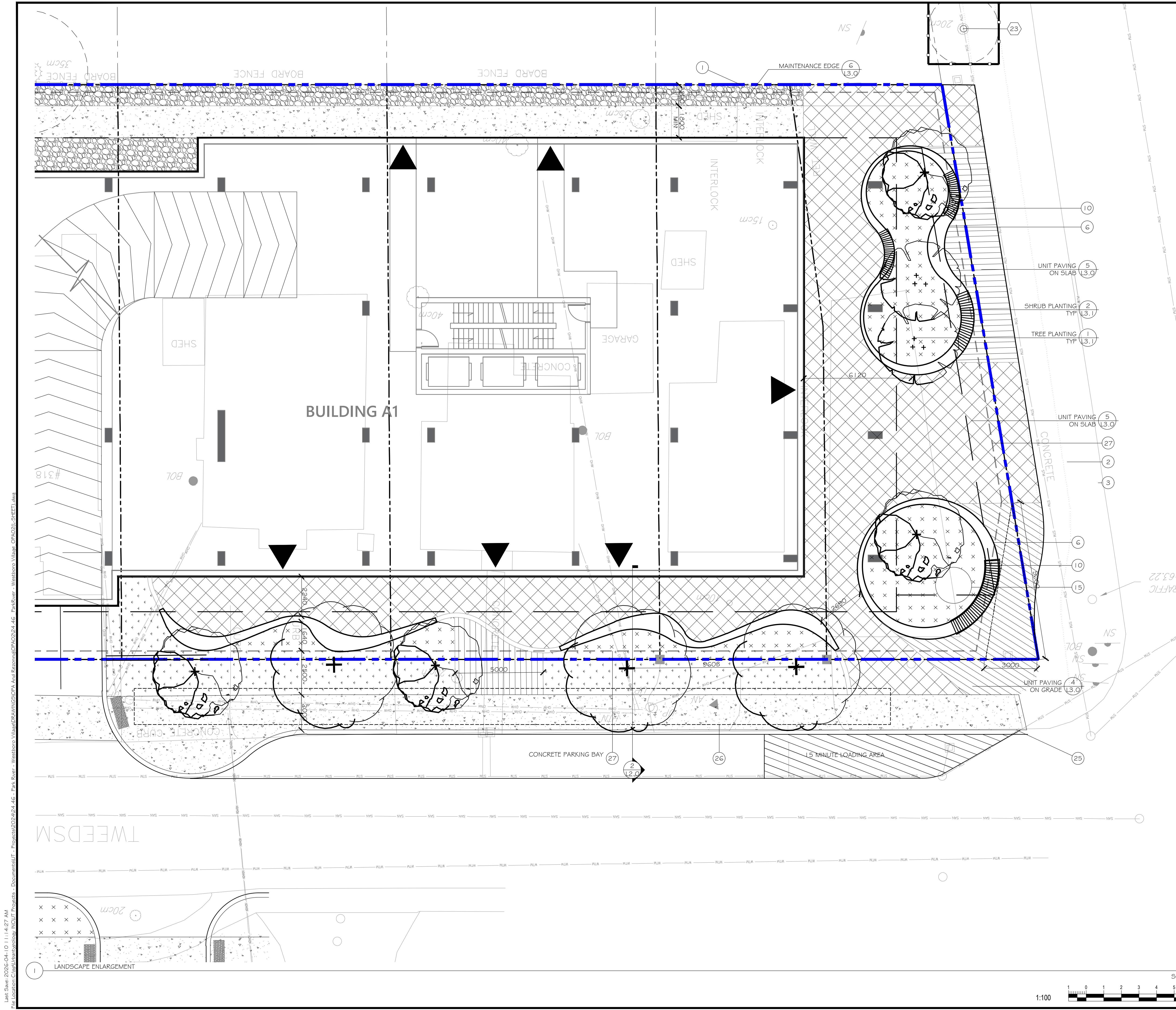
rla/architecture
 ARCHITECT:
 RLA ARCHITECTURE
 56 BEECH STREET
 OTTAWA, ON, K1S 3J6

Urbantypology
 LANDSCAPE ARCHITECT:
 URBANTYPOLOGY INC.
 UNIT 101 - 45 SPENCER STREET
 OTTAWA, ON, CANADA, K1Y 2P5

Stantec
 PLANNER, SURVEYOR & CIVIL:
 STANTEC
 300-1331 CLYDE AVENUE,
 OTTAWA, ON, K2C 3G4
 613.722.4420

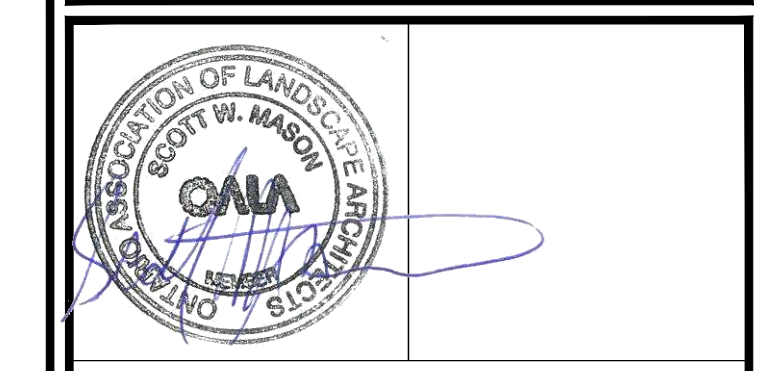
PROPERTY INFORMATION:

PLAN OF SURVEY	PART OF LOT 26 REGISTERED PLAN 236
ADDRESSES:	322, 326, 327, 330 ATHLONE; 1994 SCOTT; 306, 314, 316, 317, 318, 320, 321, 323, 324, 327, 328, 333, 335 TWEEDSMUIR
CITY OF OTTAWA	CITY OF OTTAWA
SURVEYOR	STANTEC GEOMATICS LTD.



- LEGEND:**
- SITE BOUNDARY
 - BUILDING OVERHANG
 - EXTENT OF UNDERGROUND PARKING
 - APPROX. EXTENT OF SOIL CELL SYSTEM (7/3.0)(8/3.0)
 - WOOD BOARD PRIVACY FENCE
 - PATIO FENCE (4/3.1)
 - 1.5m HT BLACK VINYL CHAIN LINK FENCE
 - TREE PROTECTION (3/3.1)
 - DOOR LOCATION (TBD)
 - BIKE RACKS
 - MOUNTED ON SEAT WALL
 - SEATING TABLES
 - TWSI
 - TOPSOIL AND SOD
 - CONCRETE WALKWAY
 - UNIT PAVING
 - UNIT PAVING
 - PERMEABLE UNIT PAVERS
 - PEAGRAVEL MAINTENANCE EDGE
 - CRITICAL ROOT ZONE
 - TREE CONSERVATION REPORT NO.
 - LARGE DECIDUOUS TREE
 - MEDIUM DECIDUOUS TREE
 - COLUMNAR/SMALL TREE
 - CONIFEROUS TREE
 - SHRUBS
 - EXISTING OHW
 - EXISTING STM / SAN
 - EXISTING TREES
 - EXISTING FIRE HYDRANT
 - EXISTING MANHOLE
 - EXISTING CATCH BASIN
 - EXISTING POLE / SIGN

- KEYNOTES**
1. EXISTING FENCE TO REMAIN AND BE PROTECTED
 2. CONCRETE SIDEWALK (BY OTHERS)
 3. BIKE LANE (BY OTHERS)
 4. TOPSOIL AND SOD
 5. RAISED PLANTER - WITH SHRUBS
 6. RAISED PLANTER WITH PRECAST CONCRETE SEATING WALL (TYP)
 7. POLLINATOR GARDEN WITH SHRUBS AND PERENNIALS
 8. PLANTER WALL WITH GATE (TYP)
 9. CONCRETE SEAT WALL
 10. WALL MOUNTED BENCHES
 11. RAISED PEDESTRIAN CROSSING
 12. FLUSH CONCRETE PAVING BAND (TYP)
 13. CONCRETE PAVING BAND (TYP)
 14. UNIT PAVING WITH BISTRO TABLES (PATIO AREA)
 15. POTENTIAL FUTURE PUBLIC ART
 16. COVERED AND FENCED BIKE SHELTER
 17. PEDESTRIAN LIGHT
 18. TRELLIS STRUCTURE WITH LIGHTING
 19. GAME TABLE
 20. SHADE CANOPY
 21. DOG PARK WITH CRUSHED GRANITE PAVING
 22. HYDRO 1.5m SETBACK FOR SMALL TREES (BOTH SIDES)
 23. HYDRO 6.0m SETBACK FOR MEDIUM TREES
 24. POTENTIAL LOCATION OF OVERHEAD UTILITIES
 25. CONCRETE SIDEWALK AS PER CITY OF OTTAWA STANDARD DETAIL SC. 1.4
 26. EXTENT OF STRUCTURAL SOIL CELLS
 27. EXTENT OF UNDERGROUND PARKING STRUCTURE



rla/architecture
 56 Beech Street, Ottawa, Ontario K1S 3J6
 1.613.724.9932 / 1.613.724.1209 www.rodenciklahe.ca

Urbantypology
 UNIT 10-163 STERLING ROAD TORONTO, ON CANADA M4R 2B2 PH: 437.700.5446
 UNIT 101-45 SPENCER STREET OTTAWA, ON CANADA K1Y 0Y5 PH: 613.867.3042 / 613.897.1237

NO.:	REVISION:	DATE:
2	REISSUED FOR ZONING AND OPA	10 APR 2026
1	ISSUED FOR ZONING AND OPA	2 JULY 2025

ALL MEASUREMENTS ARE IN MILLIMETERS UNLESS SPECIFIED OTHERWISE. DO NOT SCALE THE DRAWINGS. ALL DRAWINGS TO BE READ IN CONJUNCTION WITH CONTRACT SPECIFICATIONS.
 COPYRIGHT RESERVED. THIS DRAWING IS THE EXCLUSIVE PROPERTY OF URBANTYPOLOGY INC. AND SHALL NOT BE REPRODUCED OR USED FOR PURPOSES OTHER THAN INTENDED BY THE OWNER, WITHOUT PERMISSION.
 THIS DRAWING SHALL ONLY BE USED FOR CONSTRUCTION WHEN FIRED WITH A PROFESSIONAL SEAL AND SIGNATURE BY THE LANDSCAPE ARCHITECT. IT IS THE RESPONSIBILITY OF THE CONTRACTOR TO:
 • VERIFY ALL DIMENSIONS AND CONDITIONS ON SITE.
 • VERIFY ALL EXISTING RECORDS CORRESPOND TO THE CONTRACT ADMINISTRATOR.
 • COMPLY WITH ALL PERTINENT CODES, BY-LAWS AND LAWS.
 • VERIFY LOCATION OF ALL UNDERGROUND SERVICES AND UTILITIES WITH RESPECTIVE AUTHORITIES PRIOR TO COMMENCEMENT OF WORK.

PROJECT:
1994 SCOTT STREET
PARK RIVER PROPERTIES
 LOCATION:
 1994 SCOTT STREET
 OTTAWA, ON

DRAWN: **SS, SG** START DATE:
 CHECKED: **SM** 24 MAR, 2025

DRAWING:
LANDSCAPE ENLARGEMENT

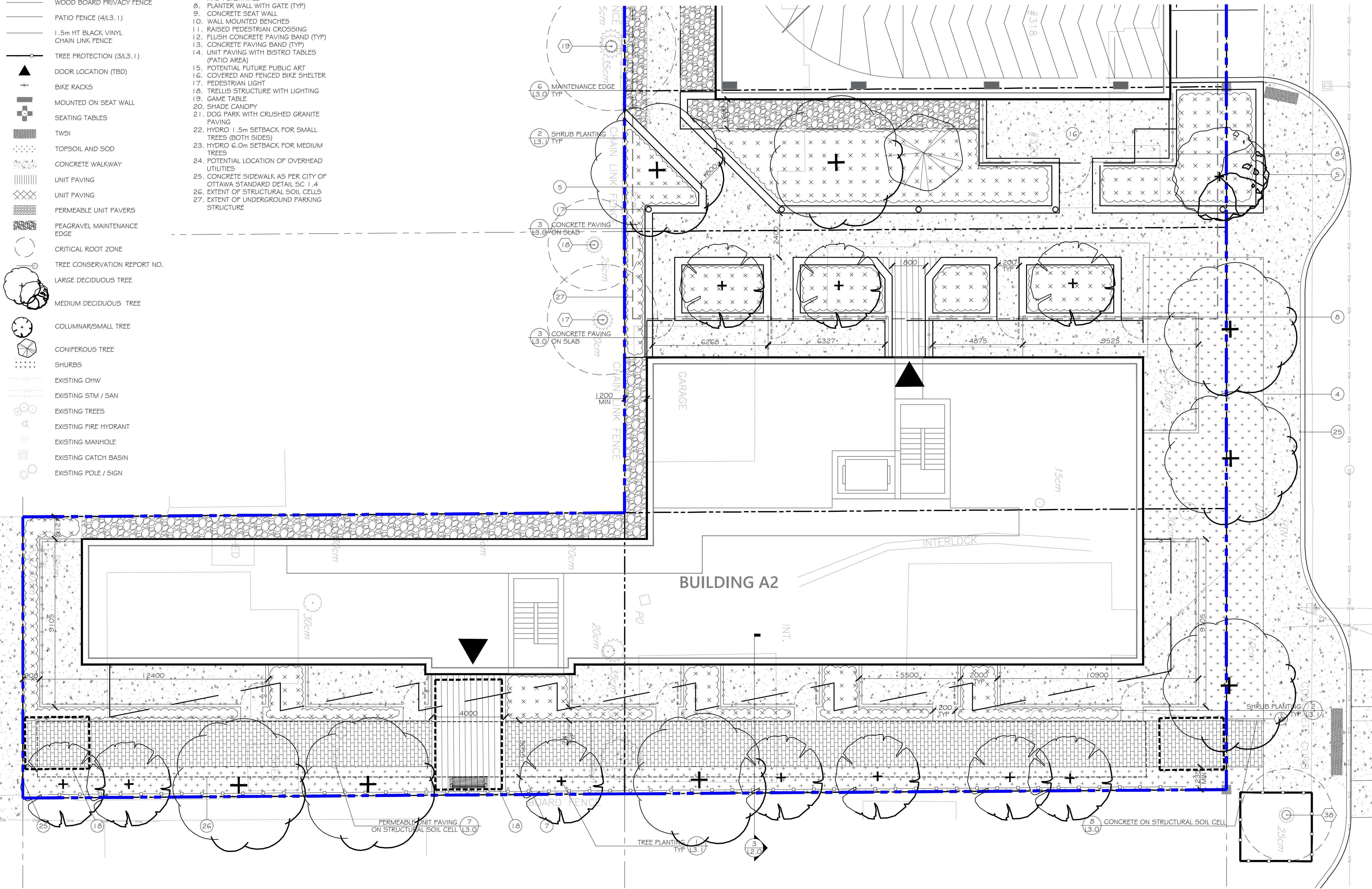
SCALE: **1:100** PAGE SIZE: **24X36**
 PROJECT NUMBER: **24.46**

NORTH: SHEET NO.:
L1.2

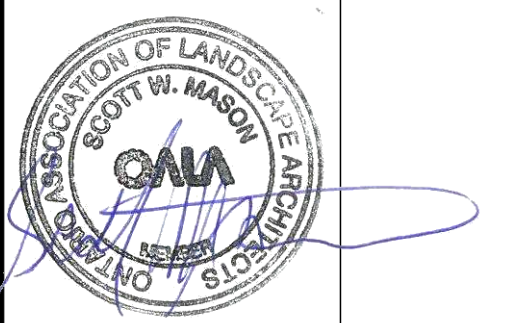
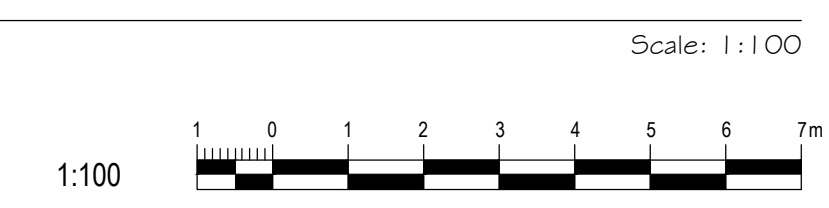
Lark-Swe: 6026-04-10 11:14:27 AM
 File Location: C:\Users\lark\Documents\1994 Scott Street - Landscape Enlargement - 1994 Scott Street - Landscape Enlargement - 1994 Scott Street - Landscape Enlargement.dwg
 Project: 2024-04-10 11:14:27 AM
 File Name: 1994 Scott Street - Landscape Enlargement - 1994 Scott Street - Landscape Enlargement - 1994 Scott Street - Landscape Enlargement.dwg
 User: lark
 Title: 1994 Scott Street - Landscape Enlargement - 1994 Scott Street - Landscape Enlargement - 1994 Scott Street - Landscape Enlargement.dwg

- LEGEND:**
- SITE BOUNDARY
 - BUILDING OVERHANG
 - EXTENT OF UNDERGROUND PARKING
 - APPROX. EXTENT OF SOIL CELL SYSTEM (7/1.3.0)(8/1.3.0)
 - WOOD BOARD PRIVACY FENCE
 - PATIO FENCE (4/L3.1)
 - 1.5m HT BLACK VINYL CHAIN LINK FENCE
 - TREE PROTECTION (3/L3.1)
 - DOOR LOCATION (TBD)
 - BIKE RACKS
 - MOUNTED ON SEAT WALL
 - SEATING TABLES
 - TWISI
 - TOPSOIL AND SOD
 - CONCRETE WALKWAY
 - UNIT PAVING
 - UNIT PAVING
 - PERMEABLE UNIT PAVERS
 - PEAGRAVEL MAINTENANCE EDGE
 - CRITICAL ROOT ZONE
 - TREE CONSERVATION REPORT NO.
 - LARGE DECIDUOUS TREE
 - MEDIUM DECIDUOUS TREE
 - COLUMNAR/SMALL TREE
 - CONIFEROUS TREE
 - SHRUBS
 - EXISTING OHW
 - EXISTING STM / SAN
 - EXISTING TREES
 - EXISTING FIRE HYDRANT
 - EXISTING MANHOLE
 - EXISTING CATCH BASIN
 - EXISTING POLE / SIGN

- # KEYNOTES**
1. EXISTING FENCE TO REMAIN AND BE PROTECTED
 2. CONCRETE SIDEWALK (BY OTHERS)
 3. BIKE LANE (BY OTHERS)
 4. TOPSOIL AND SOD
 5. RAISED PLANTER - WITH SHRUBS (TYP)
 6. RAISED PLANTER WITH PRECAST CONCRETE SEATING WALL
 7. POLLINATOR GARDEN WITH SHRUBS AND PERENNIALS
 8. PLANTER WALL WITH GATE (TYP)
 9. CONCRETE SEAT WALL
 10. WALL MOUNTED BENCHES
 11. RAISED PEDESTRIAN CROSSING
 12. FLUSH CONCRETE PAVING BAND (TYP)
 13. CONCRETE PAVING BAND (TYP)
 14. UNIT PAVING WITH BISTRO TABLES (PATIO AREA)
 15. POTENTIAL FUTURE PUBLIC ART
 16. COVERED AND FENCED BIKE SHELTER
 17. PEDESTRIAN LIGHT
 18. TRELLIS STRUCTURE WITH LIGHTING
 19. GAME TABLE
 20. SHADE CANOPY
 21. DOG PARK WITH CRUSHED GRANITE PAVING
 22. HYDRO 1.5m SETBACK FOR SMALL TREES (BOTH SIDES)
 23. HYDRO 6.0m SETBACK FOR MEDIUM TREES
 24. POTENTIAL LOCATION OF OVERHEAD UTILITIES
 25. CONCRETE SIDEWALK AS PER CITY OF OTTAWA STANDARD DETAIL SC 1.4
 26. EXTENT OF STRUCTURAL SOIL CELLS
 27. EXTENT OF UNDERGROUND PARKING STRUCTURE



1 LANDSCAPE ENLARGEMENT



rla/architecture
 56 Beech Street, Ottawa, Ontario K1S 3J6
 1.613.724.9932 1.613.724.1209 www.rodericklahey.ca

Urbantypology
 UNIT 10-161 STERLING ROAD TORONTO, ON CANADA, M4R 2B2 PH: 437.700.5446
 UNIT 101-45 SPENCER STREET OTTAWA, ON CANADA, K1Y 2P5 PH: 613.867.3042 / 613.897.1237

2 REISSUED FOR ZONING AND OPA 10 APR 2026
 1 ISSUED FOR ZONING AND OPA 2 JULY 2025
 NO.: REVISION: DATE:

ALL MEASUREMENTS ARE IN MILLIMETERS UNLESS SPECIFIED OTHERWISE. DO NOT SCALE THE DRAWINGS. ALL DRAWINGS TO BE READ IN CONJUNCTION WITH CONTRACT SPECIFICATIONS.
 COPYRIGHT RESERVED. THIS DRAWING IS THE EXCLUSIVE PROPERTY OF URBANTYPOLOGY INC. AND SHALL NOT BE REPRODUCED OR USED FOR PURPOSES OTHER THAN INTENDED BY THE OWNER, WITHOUT PERMISSION.
 THIS DRAWING SHALL ONLY BE USED FOR CONSTRUCTION WHEN FIRED WITH A PROFESSIONAL SEAL AND SIGNATURE BY THE LANDSCAPE ARCHITECT. IT IS THE RESPONSIBILITY OF THE CONTRACTOR TO:
 • VERIFY ALL DIMENSIONS AND CONDITIONS ON SITE.
 • REPORT ALL ERRORS AND/OR OMISSIONS TO THE CONTRACT ADMINISTRATOR.
 • COMPLY WITH ALL PERTINENT CODES, BY-LAWS AND LAWS.
 • VERIFY LOCATION OF ALL UNDERGROUND SERVICES AND UTILITIES WITH RESPECTIVE AUTHORITIES PRIOR TO COMMENCEMENT OF WORK.

PROJECT:
**1994 SCOTT STREET
 PARK RIVER PROPERTIES**
 LOCATION:
 1994 SCOTT STREET
 OTTAWA, ON

DRAWN: SS, SG START DATE:
 CHECKED: SM 24 MAR, 2025

DRAWING:
**LANDSCAPE
 ENLARGEMENT**

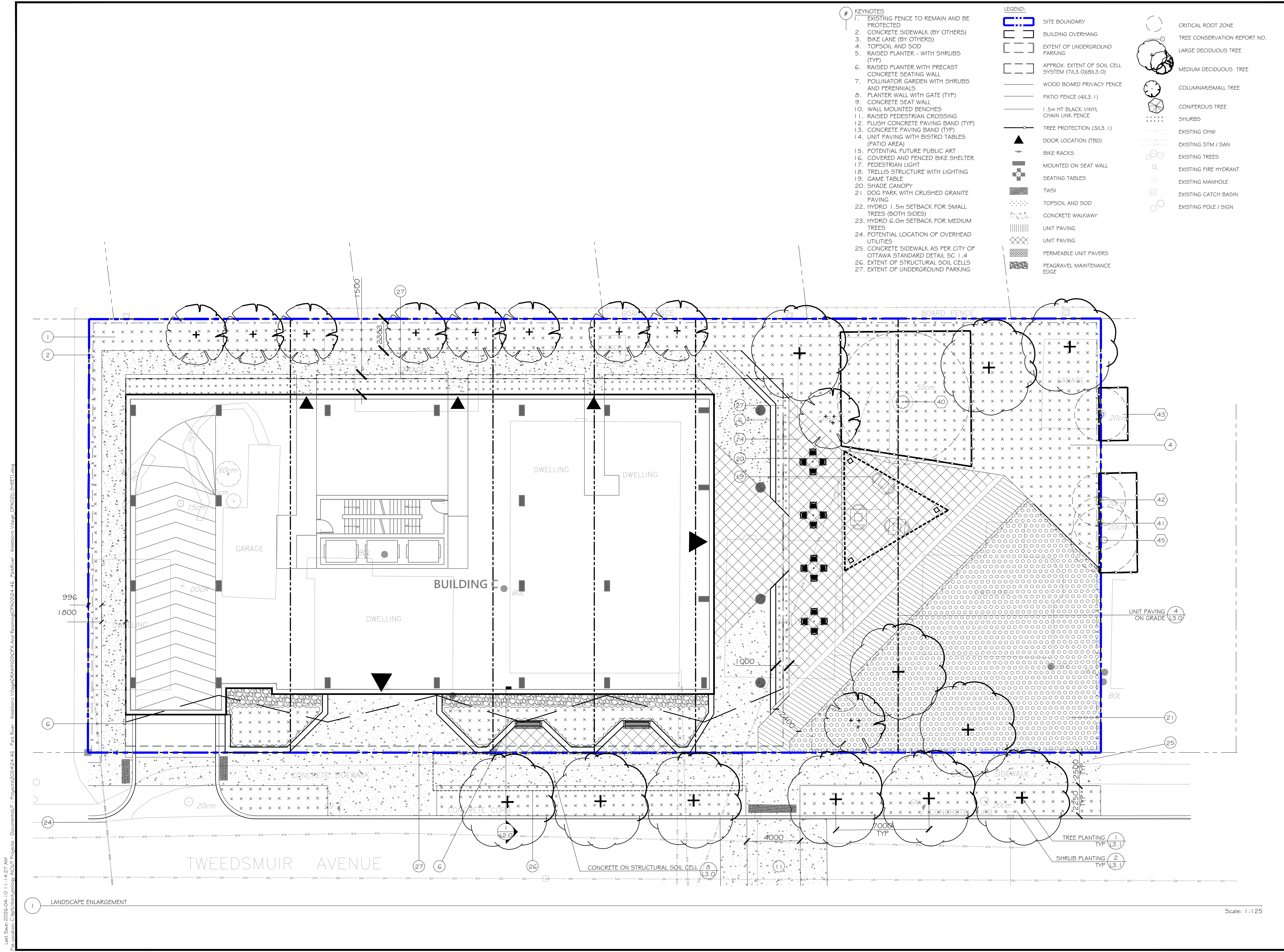
SCALE: 1:100 PAGE SIZE: 24X36
 PROJECT NUMBER: 24.46

NORTH: SHEET NO.:

L1.3

L1.3.dwg: 2024-04-10 11:14:27 AM
 File Location: C:\projects\1994 Scott Street\1994 Scott Street - Landscape.dwg
 Project: 1994 Scott Street - Landscape.dwg
 User: ParkRiver - Westshore\CPA2024.dwg
 Plotter: Westshore\CPA2024.dwg
 Plot Style: Westshore\CPA2024.dwg
 Plot Date: 2024-04-10 11:14:27 AM

XXXX-XX-XX-XXX



rla/architecture
 56 Beech Street, Ottawa, Ontario K1S 3J6
 t.613.724.9932 f.613.724.1209 www.rodericklahey.ca

Urbantypology
 UNIT 101 - 161 STERLING ROAD TORONTO, ON CANADA, M4R 2B2 PH: 437.700.5446
 UNIT 101 - 45 SPENCER STREET OTTAWA, ON CANADA, K1P 2P5 PH: 613.867.3042 / 613.897.1237

NO.	REVISION:	DATE:
2	REISSUED FOR ZONING AND OPA	10 APR 2026
1	ISSUED FOR ZONING AND OPA	2 JULY 2025

ALL MEASUREMENTS ARE IN MILLIMETERS UNLESS SPECIFIED OTHERWISE. DO NOT SCALE THE DRAWINGS. ALL DRAWINGS TO BE READ IN CONJUNCTION WITH CONTRACT SPECIFICATIONS.
 COPYRIGHT RESERVED. THIS DRAWING IS THE EXCLUSIVE PROPERTY OF URBANTYPOLOGY INC. AND SHALL NOT BE REPRODUCED OR USED FOR PURPOSES OTHER THAN INTENDED BY THE OWNER, WITHOUT PERMISSION.
 THIS DRAWING SHALL ONLY BE USED FOR CONSTRUCTION WHEN FIRED WITH A PROFESSIONAL SEAL AND SIGNATURE BY THE LANDSCAPE ARCHITECT. IT IS THE RESPONSIBILITY OF THE CONTRACTOR TO:
 • VERIFY ALL DIMENSIONS AND CONDITIONS ON SITE.
 • REPORT ALL ERRORS AND/OR OMISSIONS TO THE CONTRACT ADMINISTRATOR.
 • COMPLY WITH ALL PERTINENT CODES, BY-LAWS AND LAWS.
 • VERIFY LOCATION OF ALL UNDERGROUND SERVICES AND UTILITIES WITH RESPECTIVE AUTHORITIES PRIOR TO COMMENCEMENT OF WORK.

PROJECT:
 1994 SCOTT STREET
 PARK RIVER PROPERTIES

LOCATION:
 1994 SCOTT STREET
 OTTAWA, ON

DRAWN: SS, SG **START DATE:**
CHECKED: SM **24 MAR, 2025**

DRAWING:
LANDSCAPE ENLARGEMENT

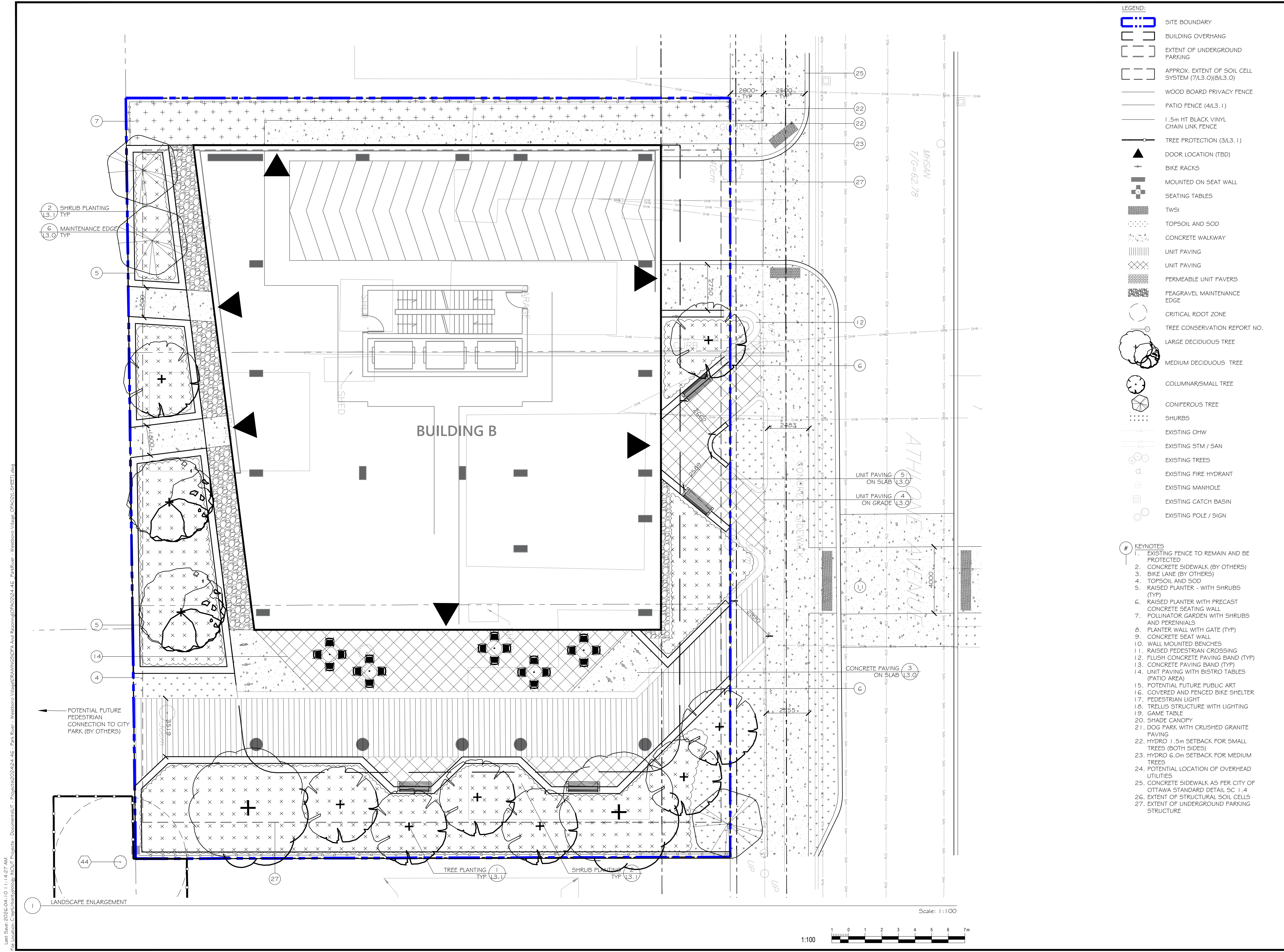
SCALE: 1:125 **PAGE SIZE:** 24X36

PROJECT NUMBER: 24.46

NORTH: **SHEET NO.:**
L1.4

Lnk: Save: 02:26:04 - IO 11:14:27 AM
 File Location: C:\projects\1994 Scott Street\1994 Scott Street - Landscape - Westshore Village - OPA\2025\1994 Scott Street.dwg

XXXX-XX-XX-XX



- LEGEND:
- [Symbol] SITE BOUNDARY
 - [Symbol] BUILDING OVERHANG
 - [Symbol] EXTENT OF UNDERGROUND PARKING
 - [Symbol] APPROX. EXTENT OF SOIL CELL SYSTEM (7/L3.0)/(8/L3.0)
 - [Symbol] WOOD BOARD PRIVACY FENCE
 - [Symbol] PATIO FENCE (4/L3.1)
 - [Symbol] 1.5m HT BLACK VINYL CHAIN LINK FENCE
 - [Symbol] TREE PROTECTION (3/L3.1)
 - [Symbol] DOOR LOCATION (TBD)
 - [Symbol] BIKE RACKS
 - [Symbol] MOUNTED ON SEAT WALL
 - [Symbol] SEATING TABLES
 - [Symbol] TWSI
 - [Symbol] TOPSOIL AND SOD
 - [Symbol] CONCRETE WALKWAY
 - [Symbol] UNIT PAVING
 - [Symbol] UNIT PAVING
 - [Symbol] PERMEABLE UNIT PAVERS
 - [Symbol] PEAGRAVEL MAINTENANCE EDGE
 - [Symbol] CRITICAL ROOT ZONE
 - [Symbol] TREE CONSERVATION REPORT NO.
 - [Symbol] LARGE DECIDUOUS TREE
 - [Symbol] MEDIUM DECIDUOUS TREE
 - [Symbol] COLUMNAR/SMALL TREE
 - [Symbol] CONIFEROUS TREE
 - [Symbol] SHRUBS
 - [Symbol] EXISTING OHW
 - [Symbol] EXISTING STM / SAN
 - [Symbol] EXISTING TREES
 - [Symbol] EXISTING FIRE HYDRANT
 - [Symbol] EXISTING MANHOLE
 - [Symbol] EXISTING CATCH BASIN
 - [Symbol] EXISTING POLE / SIGN

- # KEYNOTES
1. EXISTING FENCE TO REMAIN AND BE PROTECTED
 2. CONCRETE SIDEWALK (BY OTHERS)
 3. BIKE LANE (BY OTHERS)
 4. TOPSOIL AND SOD
 5. RAISED PLANTER - WITH SHRUBS (TYP)
 6. RAISED PLANTER WITH PRECAST CONCRETE SEATING WALL
 7. POLLINATOR GARDEN WITH SHRUBS AND PERENNIALS
 8. PLANTER WALL WITH GATE (TYP)
 9. CONCRETE SEAT WALL
 10. WALL MOUNTED BENCHES
 11. RAISED PEDESTRIAN CROSSING
 12. FLUSH CONCRETE PAVING BAND (TYP)
 13. CONCRETE PAVING BAND (TYP)
 14. UNIT PAVING WITH BISTRO TABLES (PATIO AREA)
 15. POTENTIAL FUTURE PUBLIC ART
 16. COVERED AND FENCED BIKE SHELTER
 17. PEDESTRIAN LIGHT
 18. TRELLIS STRUCTURE WITH LIGHTING
 19. GAME TABLE
 20. SHADE CANOPY
 21. DOG PARK WITH CRUSHED GRANITE PAVING
 22. HYDRO 1.5m SETBACK FOR SMALL TREES (BOTH SIDES)
 23. HYDRO 6.0m SETBACK FOR MEDIUM TREES
 24. POTENTIAL LOCATION OF OVERHEAD UTILITIES
 25. CONCRETE SIDEWALK AS PER CITY OF OTTAWA STANDARD DETAIL SC. 1.4
 26. EXTENT OF STRUCTURAL SOIL CELLS
 27. EXTENT OF UNDERGROUND PARKING STRUCTURE



rla/architecture
56 Beech Street, Ottawa, Ontario K1S 3J6
t.613.724.9932 f.613.724.1209 www.rodericklahey.ca

Urbantypology
UNIT 10-161 STERLING ROAD TORONTO, ON CANADA, M6R 2B2 PH: 437.700.5446
UNIT 101-45 SPENCER STREET OTTAWA, ON CANADA, K1V 2P5 PH: 613.867.3042 / 613.897.1237

NO.:	REVISION:	DATE:
2	REISSUED FOR ZONING AND OPA	10 APR 2026
1	ISSUED FOR ZONING AND OPA	2 JULY 2025

ALL MEASUREMENTS ARE IN MILLIMETERS UNLESS SPECIFIED OTHERWISE. DO NOT SCALE THE DRAWINGS. ALL DRAWINGS TO BE READ IN CONJUNCTION WITH CONTRACT SPECIFICATIONS.
COPYRIGHT RESERVED. THIS DRAWING IS THE EXCLUSIVE PROPERTY OF URBANTYPOLOGY INC. AND SHALL NOT BE REPRODUCED OR USED FOR PURPOSES OTHER THAN INTENDED BY THE OWNER, WITHOUT PERMISSION.
THIS DRAWING SHALL ONLY BE USED FOR CONSTRUCTION WHEN FIXED WITH A PROFESSIONAL SEAL AND SIGNATURE BY THE LANDSCAPE ARCHITECT. IT IS THE RESPONSIBILITY OF THE CONTRACTOR TO:
• REPORT ALL DIMENSIONS AND CONDITIONS ON SITE.
• REPORT ALL ERRORS AND/OR OMISSIONS TO THE CONTRACT ADMINISTRATOR.
• COMPLY WITH ALL PERTINENT CODES, BY-LAWS AND LAWS.
• VERIFY LOCATION OF ALL UNDERGROUND SERVICES AND UTILITIES WITH RESPECTIVE AUTHORITIES PRIOR TO COMMENCEMENT OF WORK.

PROJECT:
1994 SCOTT STREET PARK RIVER PROPERTIES
LOCATION:
1994 SCOTT STREET
OTTAWA, ON

DRAWN: SS, SG START DATE:
CHECKED: SM 24 MAR, 2025

DRAWING:
LANDSCAPE ENLARGEMENT

SCALE: 1:100 PAGE SIZE: 24X36

PROJECT NUMBER: 24.46

NORTH: SHEET NO.:
L1.5

L1:1 Save: 2026-04-10 11:14:27 AM
 File Location: C:\ep\urbantypology\ICDUT Projects - Documents\19 - Park River - Westboro Village\DR\1994\SS\24.46 - Park River - Westboro Village - OPA\21-L1-SHEET1.dwg

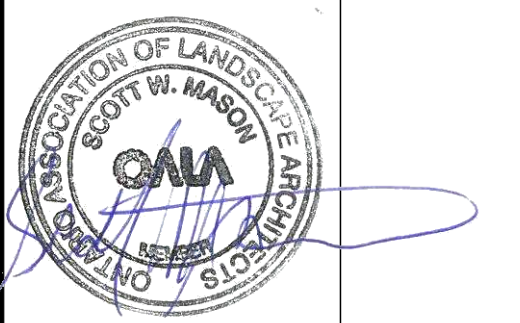
XXXX-XX-XX-XXX

Tree #	Scientific Name	Common Name	Ownership	DBH (cm)	Overall Tree Cond.	Critical Root Zone, Radius (m)	Survey Observation Notes	Arborist Recommendation	Removal Reason
1	Gleditsia sp.	Honey Locust	Priv. Owner	30	Good	3.0	Fence bracing on rear, Single stem with co-dominant leaders 2@1.5m above grade, included bark at leader split	REMOVE	WITHIN LIMITS OF CONSTRUCTION
2	Quercus macrocarpa	Burr Oak	Priv. Owner	30	Moderate	3.0	2 Leaders Pruned, Single Stem with co-dominant leaders 2@2m above grade, minor decay at trunk	REMOVE	WITHIN LIMITS OF CONSTRUCTION
3	Malus sp.	Crabapple sp.	Priv. Owner	30	Good	3.0	Symmetrical single stem, minor pruning, minor bark decay	REMOVE	WITHIN LIMITS OF CONSTRUCTION
4	Picea glauca	White Spruce	Muni. Road	40	Moderate	4.0	2 Co-dominant leaders @1m above grade, Minor pruning incl. lower limbs and @O.H. Hydro, nest present, <5% canopy dieback	REMOVE	WITHIN LIMITS OF CONSTRUCTION
5	Picea glauca	White Spruce	Priv. Owner	30	Good	3.0	Pruned Lower Limbs, Broken Limbs, Asymmetrical Canopy	REMOVE	WITHIN LIMITS OF CONSTRUCTION
6	Thuja occidentalis	Eastern White Cedar	Priv. Owner	30	Good	3.0	2@ 30cm Multistem, nest present, Minor pruning incl. lower limbs	REMOVE	WITHIN LIMITS OF CONSTRUCTION
7	Thuja occidentalis	Eastern White Cedar	Priv. Owner	30	Good	3.0	2@ 30cm Multistem, Minor pruning incl. lower limbs	REMOVE	WITHIN LIMITS OF CONSTRUCTION
8	Thuja occidentalis	Eastern White Cedar	Priv. Owner	30	Good	3.0	Asymmetrical canopy, minor pruning incl. lower limbs	REMOVE	WITHIN LIMITS OF CONSTRUCTION
9	Sorbus aucuparia	European Mountain Ash	Priv. Owner	30	Good	3.0	Minor pruning, ornaments within branches, bark decay present,	REMOVE	WITHIN LIMITS OF CONSTRUCTION
10	Malus sp.	Crabapple sp.	Priv. Owner	20	Moderate	2.0	Minor pruning, significant decay along trunk and limbs, included bark present	REMOVE	WITHIN LIMITS OF CONSTRUCTION
11	Acer saccharum	Sugar Maple	Priv. Owner	70	Good	7.0	Canopy dieback ~5%, clothesline present, included bark	REMOVE	WITHIN LIMITS OF CONSTRUCTION
12	-	-	-	-	Missing	-	-	-	-
13	Picea glauca	White Spruce	Priv. Owner	35	Good	3.5	Asymmetrical canopy, <5% canopy dieback	REMOVE	WITHIN LIMITS OF CONSTRUCTION
14	Thuja occidentalis	Eastern White Cedar	Priv. Owner	20	Good	2.0	Single stem with symmetrical canopy.	REMOVE	WITHIN LIMITS OF CONSTRUCTION
15	Thuja occidentalis	Eastern White Cedar	Priv. Owner	20	Good	2.0	Single stem with symmetrical canopy. Corrected lean.	REMOVE	WITHIN LIMITS OF CONSTRUCTION
16	Sorbus aucuparia	European Mountain Ash	Priv. Owner	15	Good	1.5	Symmetrical single stem, minor included bark	REMOVE	WITHIN LIMITS OF CONSTRUCTION
17	Picea glauca	White Spruce	Priv. Non-Owner	30	Good	3.0	Symmetrical single stem, pruned lower limbs	RETAIN	-
18	Picea glauca	White Spruce	Priv. Non-Owner	25	Moderate	2.5	Asymmetrical single stem, pruned lower limbs	RETAIN	-
19	-	-	-	-	Missing	-	-	-	-
20	Picea pungens	Colorado spruce	Priv. Non-Owner	35	Good	3.5	Symmetrical single stem, pruned lower limbs	RETAIN	-
21	Malus sp.	Crabapple sp.	Priv. Owner	35	Good	3.5	Asymmetrical single stem, minor limb breakage, minor pruning, minor bark decay on limbs, corrected lean	REMOVE	-
22	-	-	-	-	Missing	-	-	-	-
23	Tilia americana	American linden	Muni. Road	20	Moderate	2.0	Asymmetrical, minor pruning, ~10% canopy dieback, trunk suckering, moderate mechanical damage	RETAIN	-
24	-	-	-	-	Missing	-	-	-	-
25	Malus sp.	Crabapple sp.	Priv. Owner	15	Good	1.5	Symmetrical single stem. Bird feeder in branches	REMOVE	WITHIN LIMITS OF CONSTRUCTION
26	Ginkgo biloba	Maidenhair	Muni. Road	20	Good	2.0	Asymmetrical canopy, minor pruning,	REMOVE	WITHIN LIMITS OF CONSTRUCTION
27	Malus sp.	Crabapple sp.	Priv. Owner	40	Moderate	4.0	Asymmetrical canopy, ~20% canopy dieback, broken limbs, minor pruning, corrected lean, bark decay present along trunk and limbs	REMOVE	WITHIN LIMITS OF CONSTRUCTION
28	Malus sp.	Crabapple sp.	Priv. Owner	40	Poor	4.0	~20% canopy dieback, substantial decay all over, broken missing co-dominant leader, corrected lean	REMOVE	WITHIN LIMITS OF CONSTRUCTION
29	Frangula alnus	Glossy buckthorn	Priv. Owner	35	Poor	3.5	3@ 14cm Asymmetrical multistem, ~15% canopy dieback, broken limbs, poor branch unions/ angles, substantial decay along limbs	REMOVE	WITHIN LIMITS OF CONSTRUCTION
30	Acer ginnala	Amur Maple	Muni. Road	20	Good	2.0	Symmetrical single stem, <5% canopy dieback, minor pruning, contains remnants of tissue paper streamers or similar	REMOVE	WITHIN LIMITS OF CONSTRUCTION
31	Abies balsamea	Balsam Fir	Priv. Owner	15	Good	1.5	Symmetrical single stem with lower limb pruning	REMOVE	WITHIN LIMITS OF CONSTRUCTION
32	-	-	-	-	Missing	-	-	-	-
33	Acer saccharum	Sugar Maple	Priv. Owner	35	Moderate	3.5	Asymmetrical single stem, minor pruning, ~10% canopy dieback, contains rope, nest, growing over and around edge of shed roof, and string around trunk at breast height, minor limb breakage. Several branches at poor angles on side adjacent to neighbour	REMOVE	WITHIN LIMITS OF CONSTRUCTION
34	Thuja occidentalis	Eastern White Cedar	Priv. Owner	30	Good	3.0	Asymmetrical single stem, central leader pruned, lower limbs pruned, contains lights and nest, <5% canopy dieback.	REMOVE	WITHIN LIMITS OF CONSTRUCTION
35	Malus sp.	Crabapple sp.	Priv. Owner	15	Good	1.5	Symmetrical single stem. Minor pruning.	REMOVE	WITHIN LIMITS OF CONSTRUCTION
36	Acer ginnala	Amur Maple	Muni. Road	10	Good	1.0	Symmetrical single stem. <5% canopy dieback.	REMOVE	WITHIN LIMITS OF CONSTRUCTION
37	Acer saccharum	Sugar Maple	Priv. Owner	30	Good	3.0	Single stem with co-dominant leaders 2 @ 4m. Nest present.	REMOVE	WITHIN LIMITS OF CONSTRUCTION
38	Acer saccharum	Sugar Maple	Muni. Road	25	Poor	2.5	Heavy pruning, incl. at o.h. hydro, ~30% canopy dieback.	RETAIN	-
39	Acer ginnala	Amur Maple	Muni. Road	20	Moderate	2.0	Asymmetrical single stem. ~10% canopy dieback. Decay cavities present.	REMOVE	WITHIN LIMITS OF CONSTRUCTION
40	Acer saccharum	Sugar Maple	Priv. Owner	50	Moderate	5.0	Asymmetrical single stem. <5% canopy die back. Moderate pruning. Large decay cavity	RETAIN	-
41	Acer negundo	Manitoba Maple	Priv. Shared Owner Non-Owner	20	Moderate	2.0	Asymmetrical formerly multistem with substantial corrected lean. Minor pruning.	RETAIN	-
42	Acer negundo	Manitoba Maple	Priv. Shared Owner Non-Owner	20	Moderate	2.0	3 @ 20cm multistem. Fence post grown within largest stem. Asymmetrical structure, minor bark decay along limbs.	RETAIN	-
43	Acer saccharum	Sugar Maple	Priv. Shared Owner Non-Owner	20	Good	2.0	Single stem with co-dominant leaders 2 @ 2m. Included bark at trunk.	RETAIN	-
44	Ulmus sp.	Elm sp.	Muni. Park	40	Moderate	4.0	Asymmetrical canopy, 3 @ 40cm multistem, 1 leaning	RETAIN	-
45	Acer negundo	Manitoba Maple	Priv. Shared Owner Non-Owner	25	Moderate	2.5	3 @ 25 asymmetrical multistem, <5% canopy die back, corrected lean	RETAIN	-
46	Acer negundo	Manitoba Maple	Priv. Owner	25	Good	2.5	Single stem with 2 co-dominant leaders @ 0.5m	REMOVE	WITHIN LIMITS OF CONSTRUCTION
47	Acer saccharum	Sugar Maple	Muni. Road	35	Good	3.5	Minor pruning, <5% canopy dieback	REMOVE	WITHIN LIMITS OF CONSTRUCTION

OWNERSHIP KEY
 PRIV. OWNER: PROJECT OWNED LANDS
 PRIV. NON-OWNER: PRIVATE PROPERTY OF LAND OWNER NOT ASSOCIATED WITH PROJECT
 MUNI. ROAD: CITY OF OTTAWA LANDS WITHIN PUBLIC ROAD RIGHT-OF-WAY
 MUNI. PARK: CITY OF OTTAWA LANDS WITHIN PARK PROPERTY

PLANT LIST

SYM.	BOTANICAL NAME	COMMON NAME	QTY.	SIZE	REMARKS
LARGE DECIDUOUS TREES					
AF	ACER FREEMANII 'JEFFERSRED'	AUTUMN BLAZE MAPLE	--	70mm CAL.	B#B / W.B.
AF	ACER FREEMANII 'CELZAM'	CELEBRATION MAPLE	--	70mm CAL.	B#B / W.B.
AR	ACER RUBRUM	RED MAPLE	--	70mm CAL.	B#B / W.B.
AS	ACER SACCHARUM	SUGAR MAPLE	--	70mm CAL.	B#B / W.B.
GT	GLEDITSIA TRIACANTHOS VAR. NERM. SHADMASTER	SHADEMASTER HONEY LOCUST	--	70mm CAL.	B#B / W.B.
QR	QUERCUS RUBRA	RED OAK	--	70mm CAL.	B#B / W.B. PLANT IN SPRING
UM	ULMUS 'MORTON'	ACCOLADE ELM	--	70mm CAL.	B#B / W.B. PLANT IN SPRING
SMALL DECIDUOUS TREES					
AC	AMELANCHIER CANADENSIS	SHADBLow SERVICEBERRY	--	1800mm HT.	B#B / W.B. MULTI-STEM
AG	ACER GINNALA	AMUR MAPLE	--	1800mm HT.	B#B / W.B. MULTI-STEM
MR	MALUS ROYALTY	ROYALTY CRABAPPLE	--	50mm CAL.	B#B / W.B.
SR	SYRINGA RETICULATA	JAPANESE LILAC	--	1800mm HT.	B#B / W.B. MULTI-STEM
CONIFEROUS TREES					
PP	PICEA PUNGENS	COLORADO SPRUCE	--	1800mm HT.	B#B / W.B.
PS	PINUS STROBUS	WHITE PINE	--	1800mm HT.	B#B / W.B.
SHRUBS					
EA	EUONYMUS ALATUS 'COMPACTUS'	DWARF-WINGED BURNING BUSH	--	800mm HT.	POT. 1000mm O.C.
JH	JUNIPERUS HORIZONTALIS 'PLUMOSA COMPACTA'	COMPACT ANDORA JUNIPER	--	600mm SPR.	POT. 750mm O.C.
RR	ROSA RUGOSA	RUGOSA ROSE	--	500mm HT.	POT. 600mm O.C.
PO	PHYSOCARPUS OPUULIFOLIUS 'DIABOLO'	DIABOLO NINEBARK	--	800mm HT.	POT. 1200mm O.C.
PM	PINUS MUGO	MUGO PINE	--	600mm SPR.	POT. 900mm O.C.
SB	SPIREA X BUMALDA 'GOLDFLAME'	GOLDFLAME SPIREA	--	500mm HT.	POT. 600mm O.C.
SS	SORBARIA SORBIFOLIA	FALSE SPIREA	--	500mm HT.	POT. 900mm O.C.
SV	SYRINGA VULGARIS 'SENSATION'	SENSATION FRENCH HYBRID LILAC	--	800mm HT.	POT. 1200mm O.C.
ORNAMENTAL GRASS					
CA	CAJUNAGROSTIS V. ACUTIFLORA 'KARL FOERSTER'	FOREST REED GRASS	--	600mm HT.	POT. 600mm O.C.
M5	MISCANTHUS SINENSIS 'SILVER FEATHER'	SILVER FEATHER MISCANTHUS	--	600mm HT.	POT. 1000mm O.C.
PERENNIALS					
HS	HEMEROCALLIS 'STELLA D'ORO'	STELL D'ORO DAYLILY	--	1 GAL. POT	POT. 400mm O.C.
RF	RUDBEKIA FULDGIDA 'GOLDSTRUM'	BLACK EYED SUSAN	--	1 GAL. POT	POT. 450mm O.C.



rla/architecture
 56 Beech Street, Ottawa, Ontario K1S 3J6
 t.613.724.9932 f.613.724.1209 www.roderricklahey.ca

Urbantypology
 UNIT 10 - 163 STERLING ROAD TORONTO ON CANADA M8R 2B2 PH: 437.700.5446
 UNIT 101 - 45 SPENCER STREET OTTAWA ON CANADA K1V 2P5 PH: 613.867.3042 / 613.897.1237

2 REISSUED FOR ZONING AND OPA 10 APR 2026
 1 ISSUED FOR ZONING AND OPA 2 JULY 2025

NO.: REVISION: DATE:
 ALL MEASUREMENTS ARE IN MILLIMETERS UNLESS SPECIFIED OTHERWISE. DO NOT SCALE THE DRAWINGS. ALL DRAWINGS TO BE READ IN CONJUNCTION WITH CONTRACT SPECIFICATIONS.
 COPYRIGHT RESERVED. THIS DRAWING IS THE EXCLUSIVE PROPERTY OF URBANTYPOLOGY INC. AND SHALL NOT BE REPRODUCED OR USED FOR PURPOSES OTHER THAN INTENDED BY THE OWNER, WITHOUT PERMISSION.
 THIS DRAWING SHALL ONLY BE USED FOR CONSTRUCTION WHEN FIRED WITH A PROFESSIONAL SEAL AND SIGNATURE BY THE LANDSCAPE ARCHITECT. IT IS THE RESPONSIBILITY OF THE CONTRACTOR TO:
 • REPORT ALL OBSTRUCTIONS AND CONDITIONS ON SITE.
 • REPORT ALL OBSTRUCTIONS AND CONDITIONS TO THE CONTRACT ADMINISTRATOR.
 • COMPLY WITH ALL PERTINENT CODES, BY-LAWS AND LAWS.
 • VERIFY LOCATION OF ALL UNDERGROUND SERVICES AND UTILITIES WITH RESPECTIVE AUTHORITIES PRIOR TO COMMENCEMENT OF WORK.

PROJECT:
**1994 SCOTT STREET
 PARK RIVER PROPERTIES**
 LOCATION:
**1994 SCOTT STREET
 OTTAWA, ON**

DRAWN: SS, SG START DATE:
 CHECKED: SM 24 MAR, 2025

DRAWING:
**LANDSCAPE
 TREE INFORMATION**

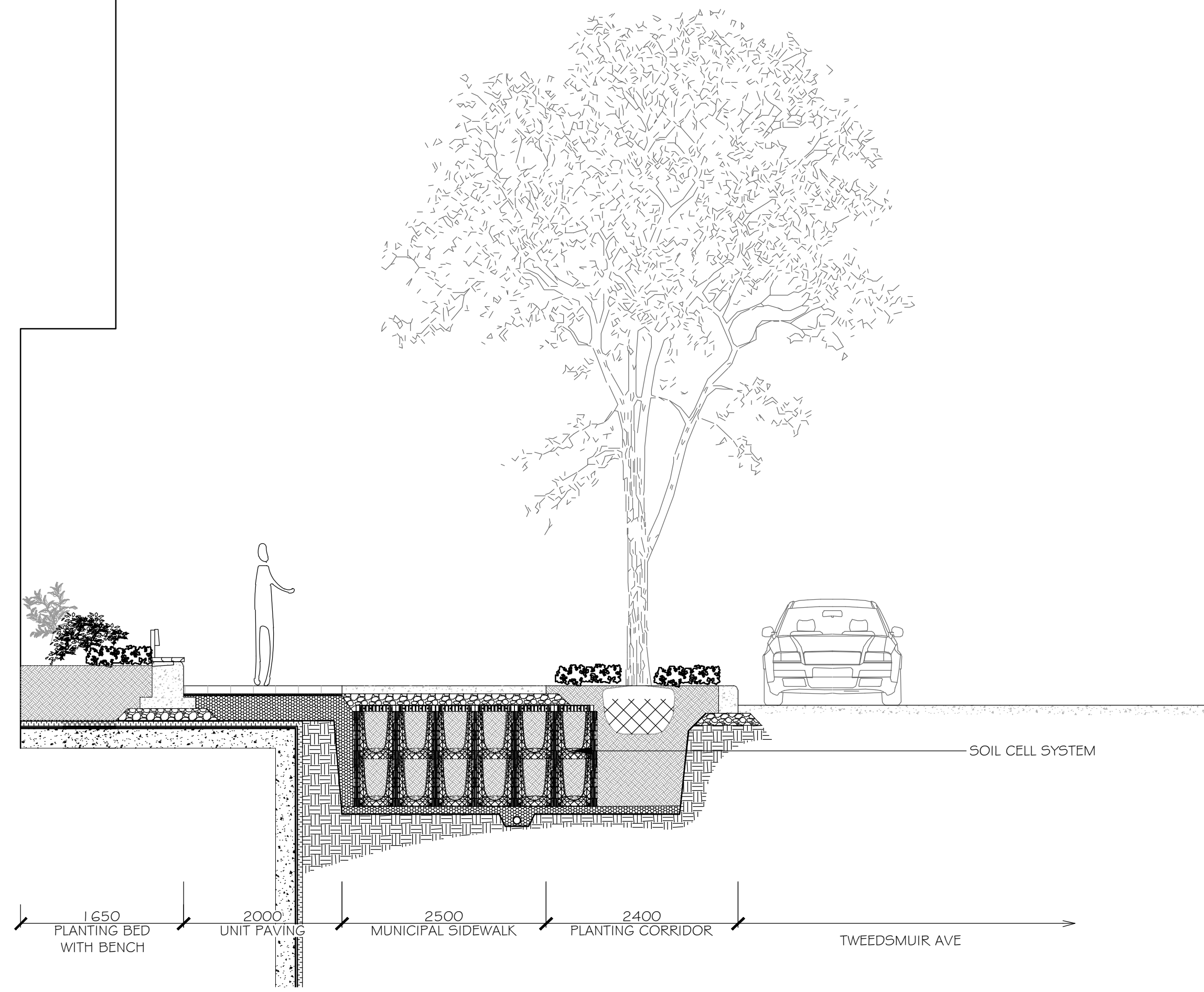
SCALE: 1:100 PAGE SIZE: 24X36
 PROJECT NUMBER: 24.46

NORTH: SHEET NO.:

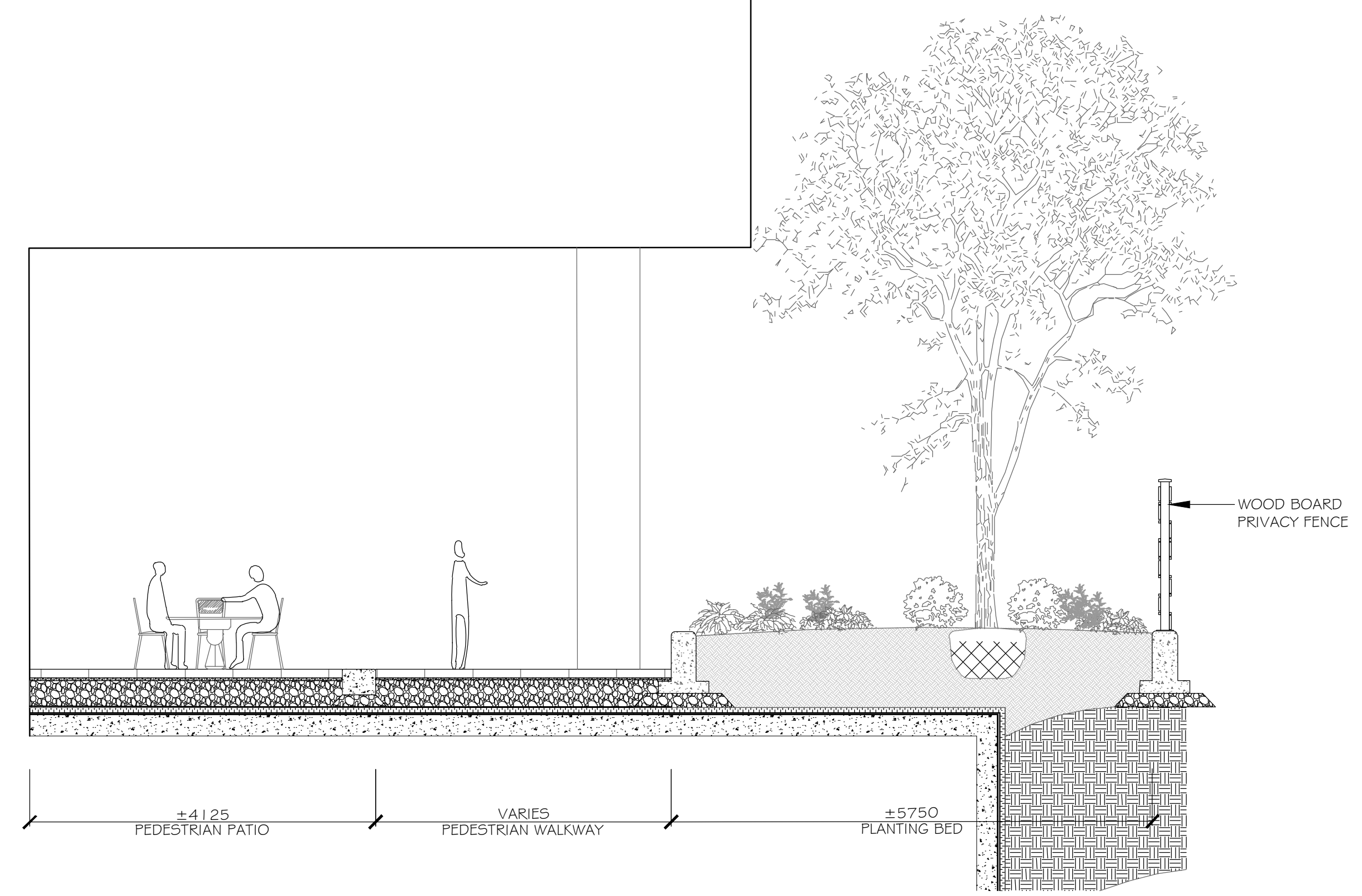
L1.5

Lnk: Save: 0026-04 - IO 1:14:27 AM
 File Location: C:\ep\urbantypology\Projects\2024\24.46 - Park River - Westboro Village\DR\MAIN\GSDPA_Aud_Report\09-2024_46_ParkRiver - Westboro Village_OPA2024_SHEET1.dwg

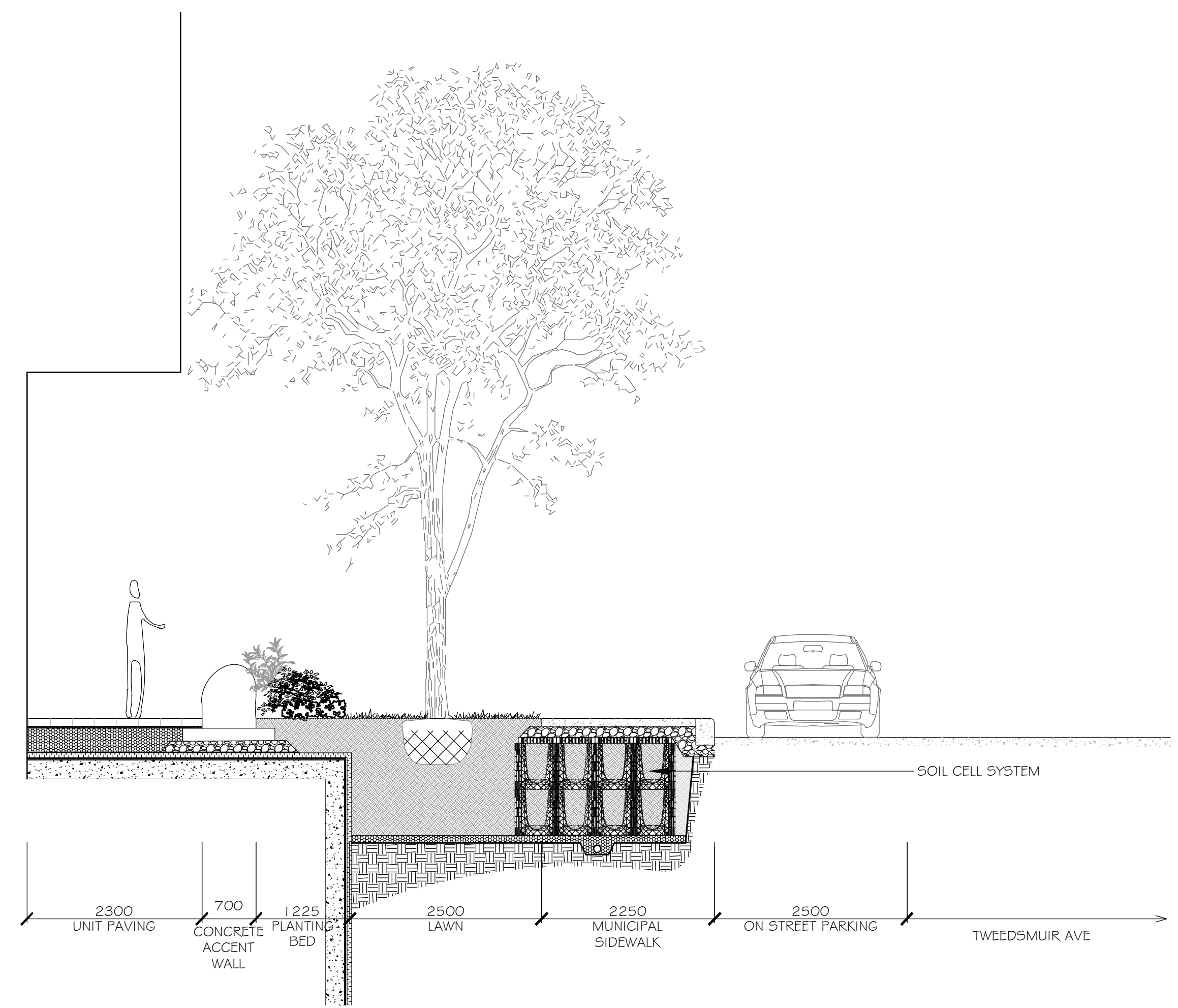
XXXX-XX-XX-XX



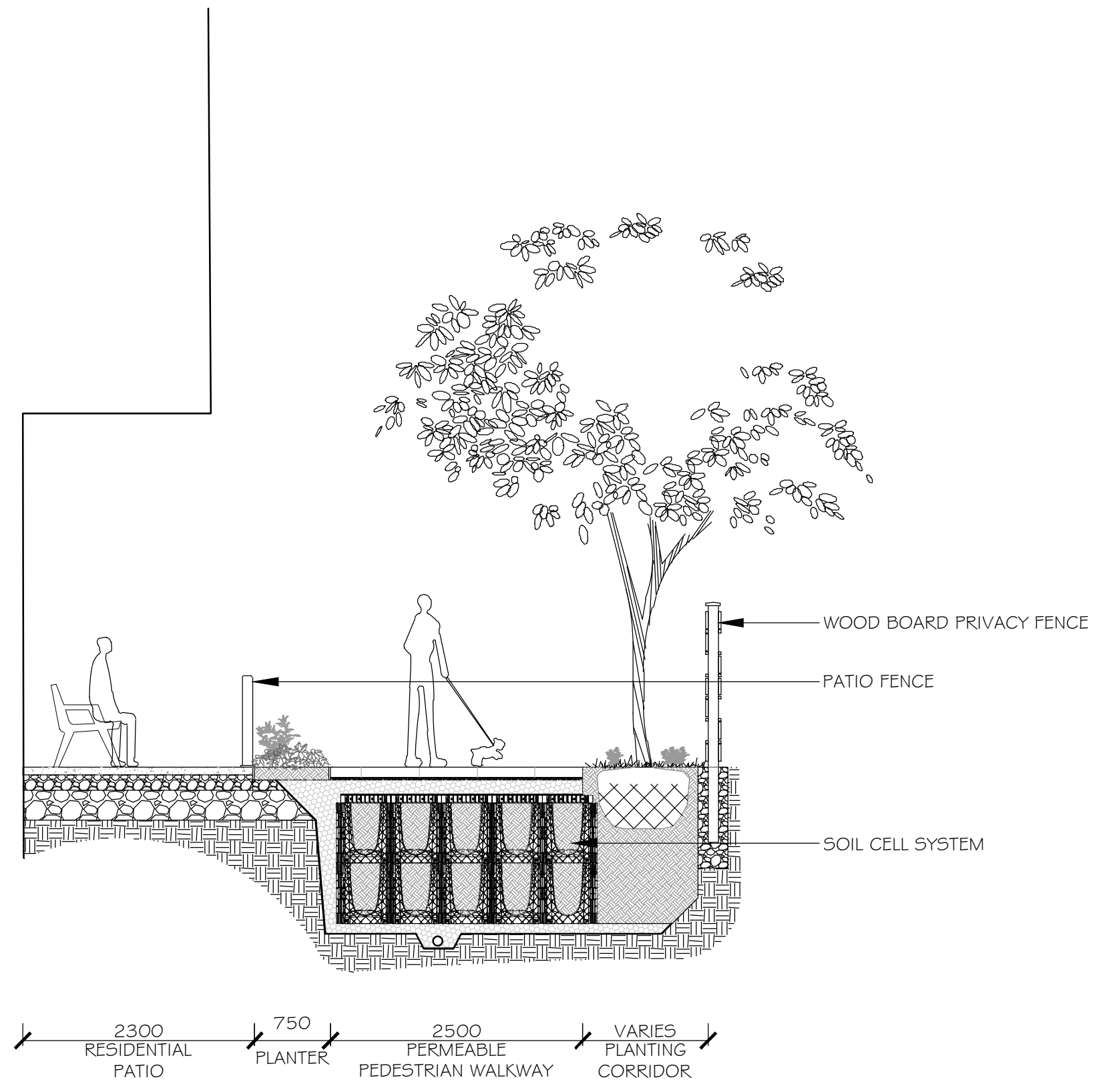
1 TWEEDSMUIR STREETScape - C BLOCK Scale: 1:50



3 PEDESTRIAN THROUGH ROUTE - B BLOCK Scale: 1:50



2 TWEEDSMUIR STREETScape - A BLOCK Scale: 1:50



3 PEDESTRIAN THROUGH ROUTE - A2 BLOCK Scale: 1:50

2	REISSUED FOR ZONING AND OPA	10 APR 2026
1	ISSUED FOR ZONING AND OPA	2 JULY 2025

NO.: REVISION: DATE:

ALL MEASUREMENTS ARE IN MILLIMETERS UNLESS SPECIFIED OTHERWISE. DO NOT SCALE THE DRAWINGS. ALL DRAWINGS TO BE READ IN CONJUNCTION WITH CONTRACT SPECIFICATIONS.

COPYRIGHT RESERVED. THIS DRAWING IS THE EXCLUSIVE PROPERTY OF URBANTYPOLOGY INC. AND SHALL NOT BE REPRODUCED OR USED FOR PURPOSES OTHER THAN INTENDED BY THE OWNER, WITHOUT PERMISSION.
THIS DRAWING SHALL ONLY BE USED FOR CONSTRUCTION WHEN FIXED WITH A PROFESSIONAL SEAL AND SIGNATURE BY THE LANDSCAPE ARCHITECT. IT IS THE RESPONSIBILITY OF THE CONTRACTOR TO:
• VERIFY ALL DIMENSIONS AND CONDITIONS ON SITE.
• REPORT ALL ERRORS AND/OR OMISSIONS TO THE CONTRACT ADMINISTRATOR.
• COMPLY WITH ALL PERTINENT CODES, BY-LAWS AND LAWS.
• VERIFY LOCATION OF ALL UNDERGROUND SERVICES AND UTILITIES WITH RESPECTIVE AUTHORITIES PRIOR TO COMMENCEMENT OF WORK.

PROJECT:
**1994 SCOTT STREET
PARK RIVER PROPERTIES**
LOCATION:
1994 SCOTT STREET
OTTAWA, ON

DRAWN: SG START DATE:
CHECKED: SM 24 MAR, 2025

DRAWING:
**LANDSCAPE
SECTION**

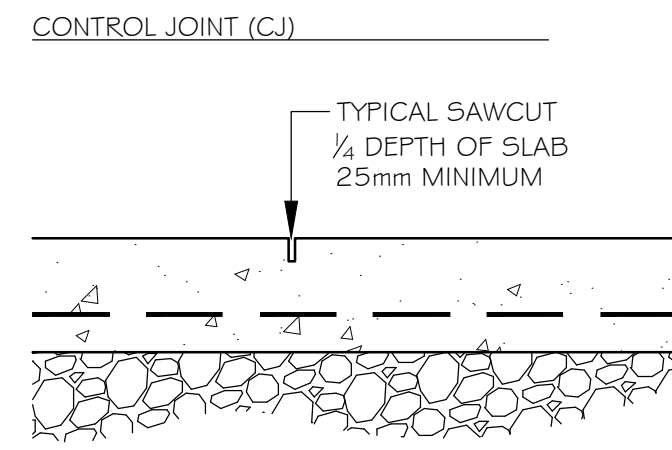
SCALE: 1:50 PAGE SIZE: 24X36

PROJECT NUMBER: 24.46

NORTH: SHEET NO.:
L2.0

Lnk: Save: 02/26/24 10:11:14:27 AM
 File Location: C:\projects\1994 Scott Street\1994 Scott Street - Landscape\1994 Scott Street - Landscape - 02/26/24 - 10:11:14:27 AM - 1994 Scott Street - Landscape - 02/26/24 - 10:11:14:27 AM.dwg

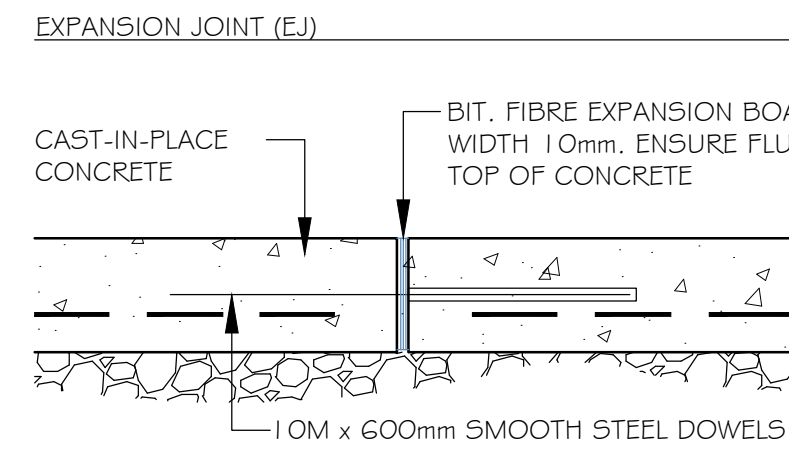
XXXX-XX-XX-XX



NOTES:
 1. REFER TO DRAWINGS FOR JOINT LAYOUT
 2. SAWCUT WITHIN 48 HOURS OF POUR
 3. NO TOOLED EDGES

1 CONCRETE PAVING JOINTS

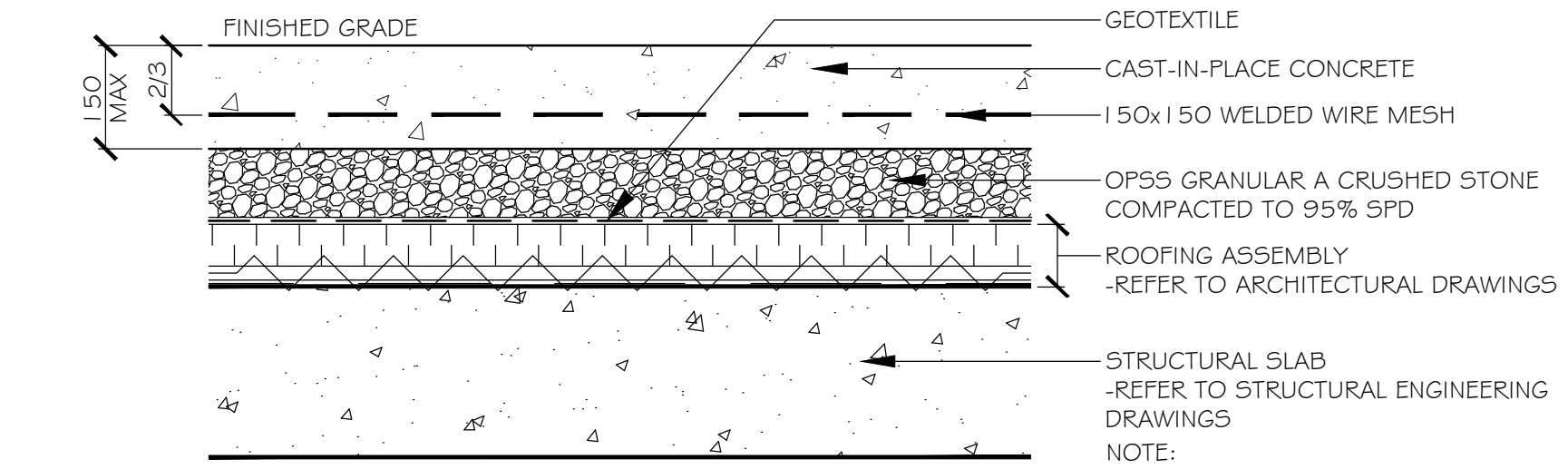
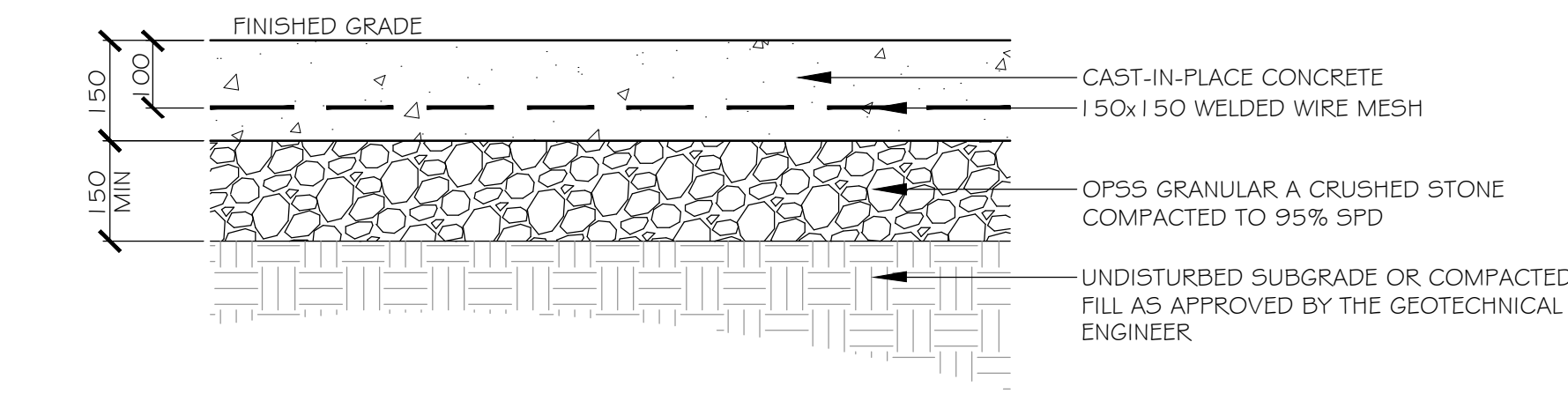
Scale: 1:10



NOTES:
 1. REFER TO DRAWINGS FOR JOINT LAYOUT
 2. ALL STEEL DOWELS TO BE EPOXY-COATED
 3. NO TOOLED EDGES

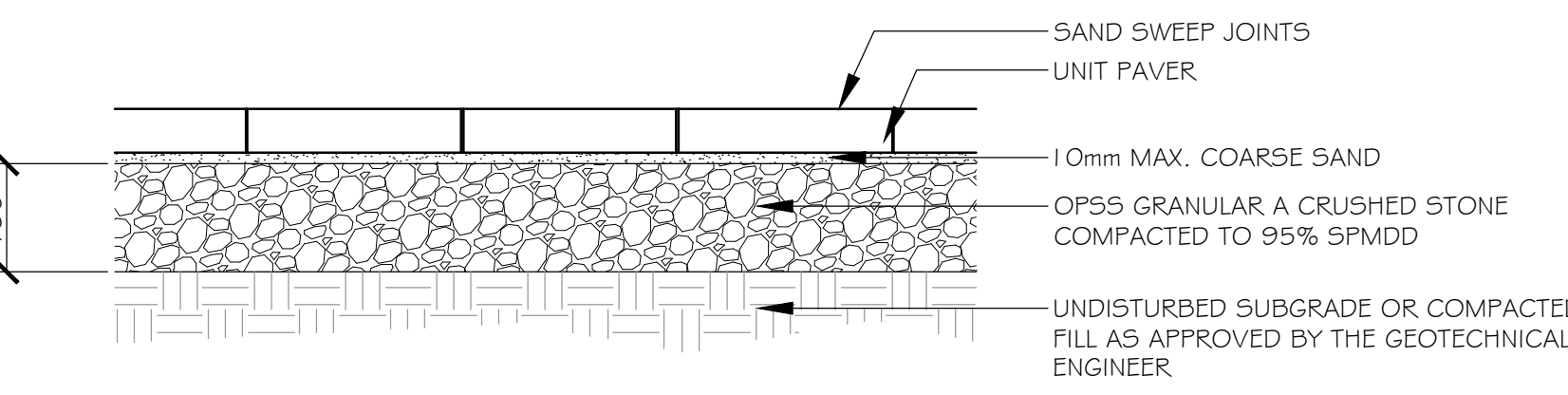
2 CONCRETE PAVING - ON GRADE

Scale: 1:10



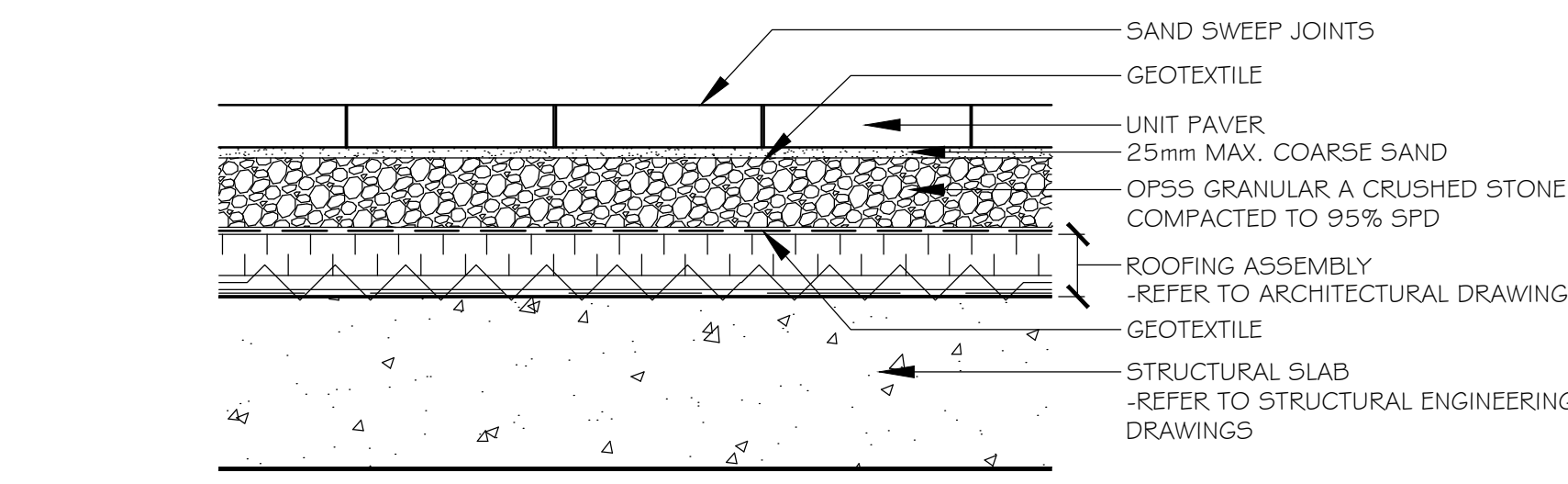
3 CONCRETE PAVING - ON SLAB

Scale: 1:10



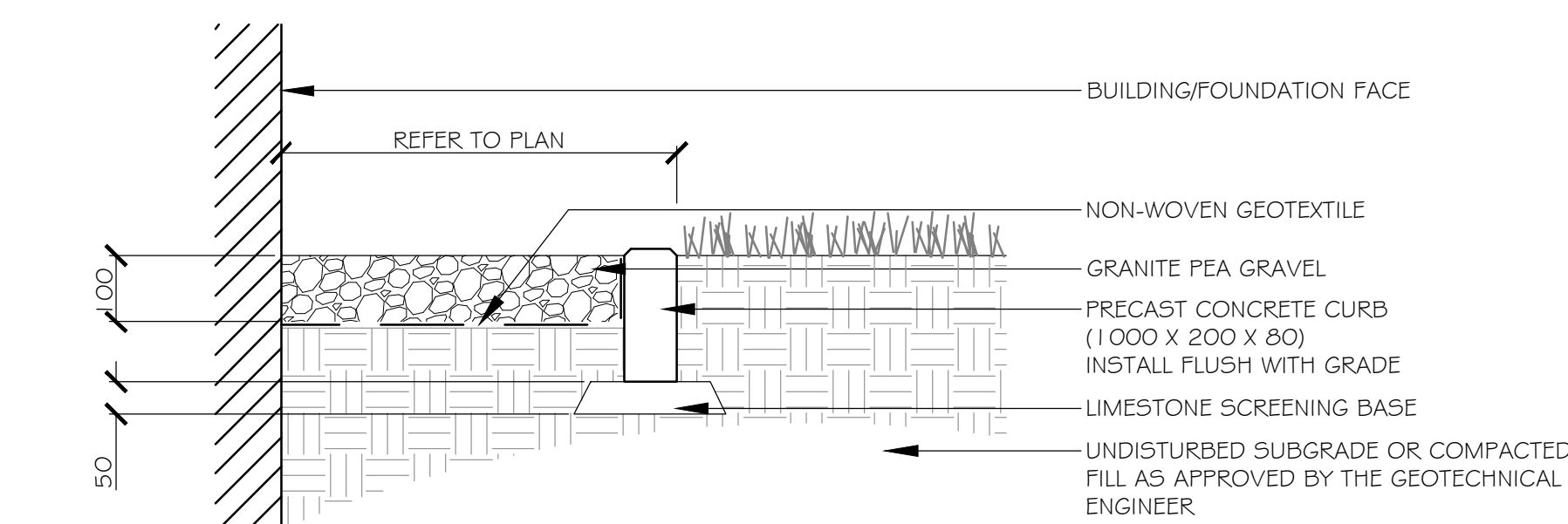
4 UNIT PAVING - ON GRADE

Scale: 1:10



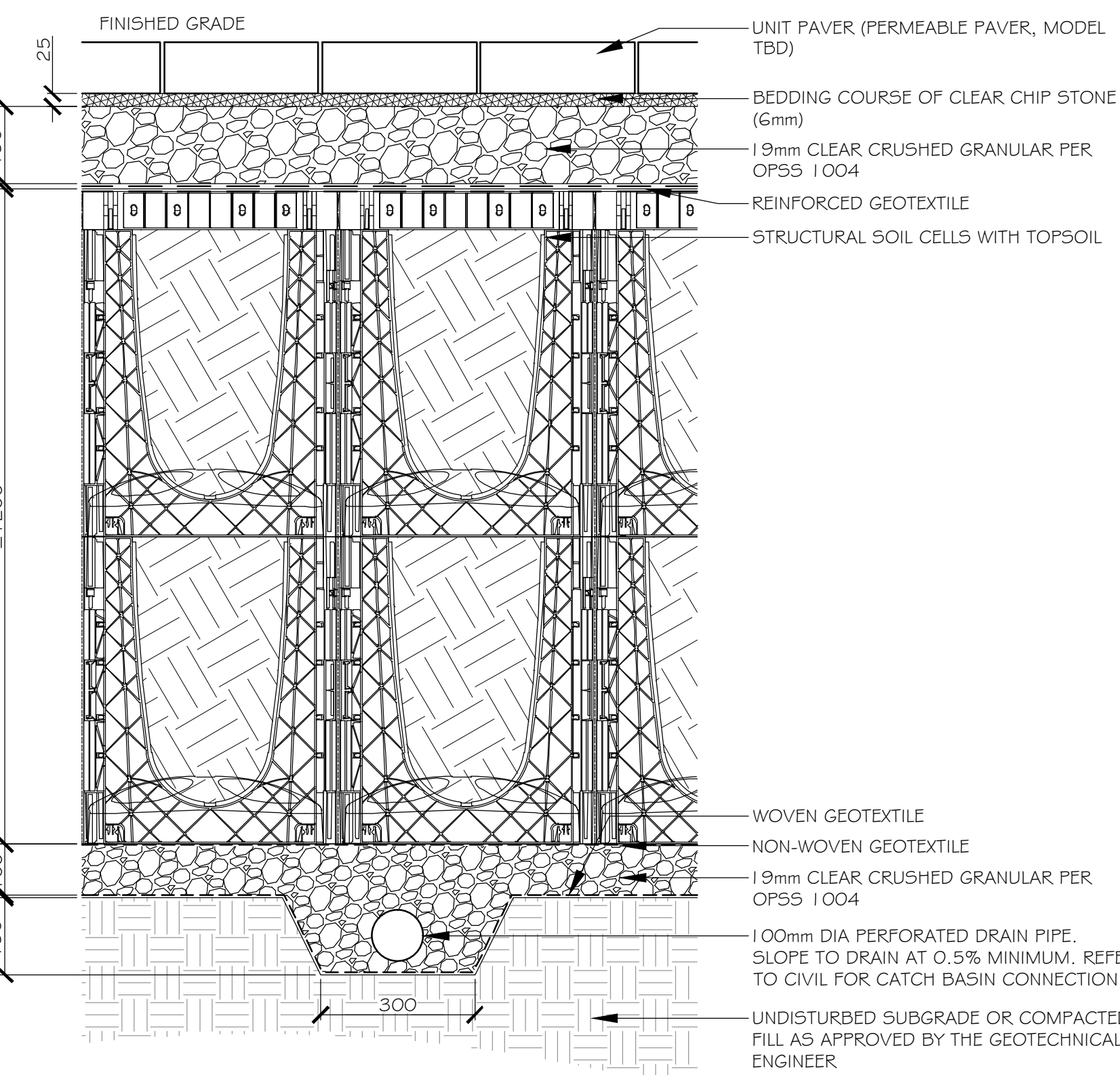
5 UNIT PAVING - OVER ROOF DECK

Scale: 1:10



6 MAINTENANCE EDGE

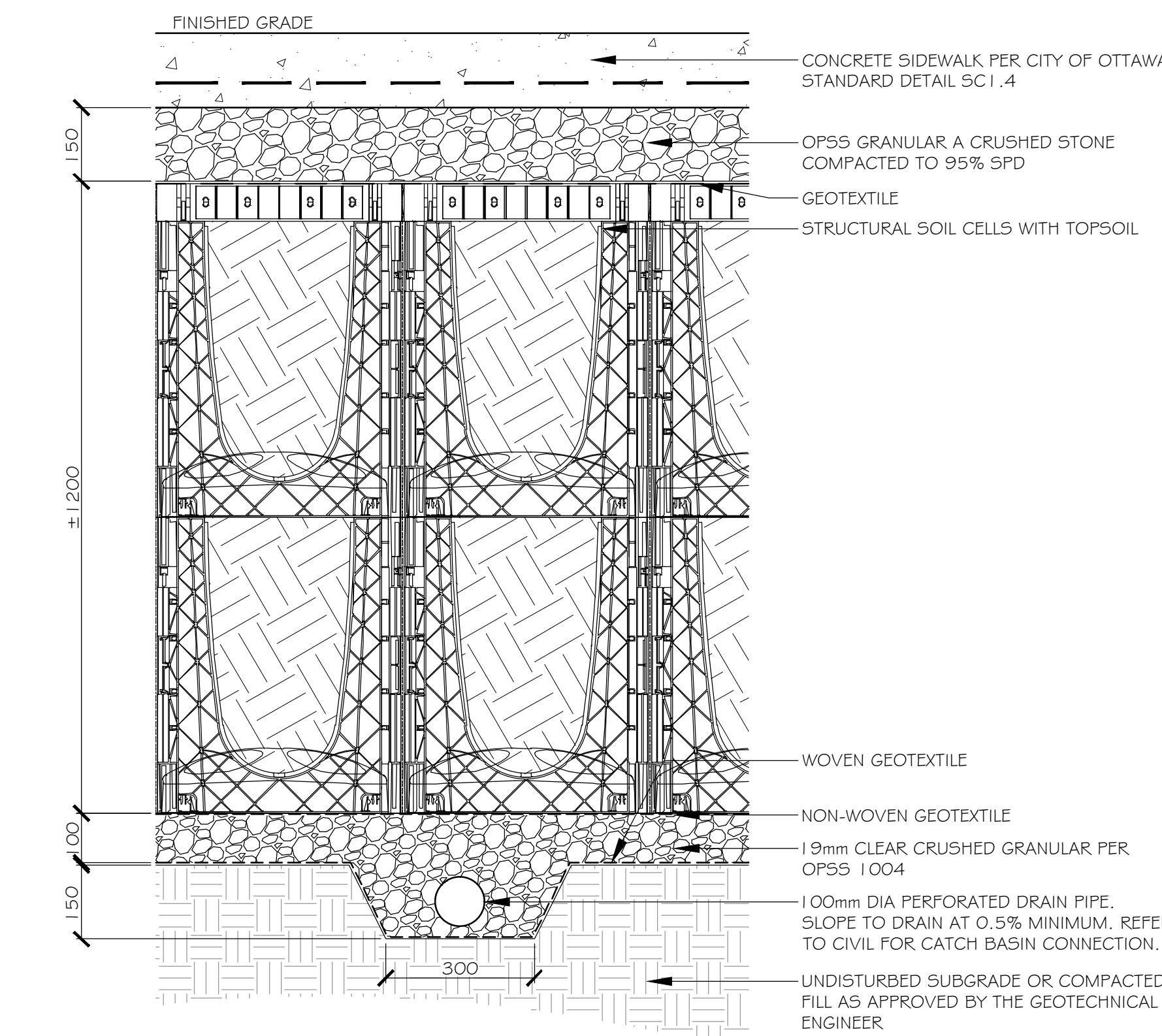
Scale: 1:10



NOTE:
 1. PERMEABLE UNIT PAVING TO BE INSTALLED OVER STRUCTURAL SOIL CELLS ONLY
 2. JOINTING AGGREGATE TO MATCH ASTM #8 OR 3mm (1/8") GRANITE CHIP PER UNIT PAVER MANUFACTURER'S DIRECTION FOR PERMEABLE PAVER MODEL
 3. INSTALL NON-WOVEN CLASS 1 GEOTEXTILE AS PER MS-22.15

7 PERMEABLE UNIT PAVING ON STRUCTURAL SOIL CELL

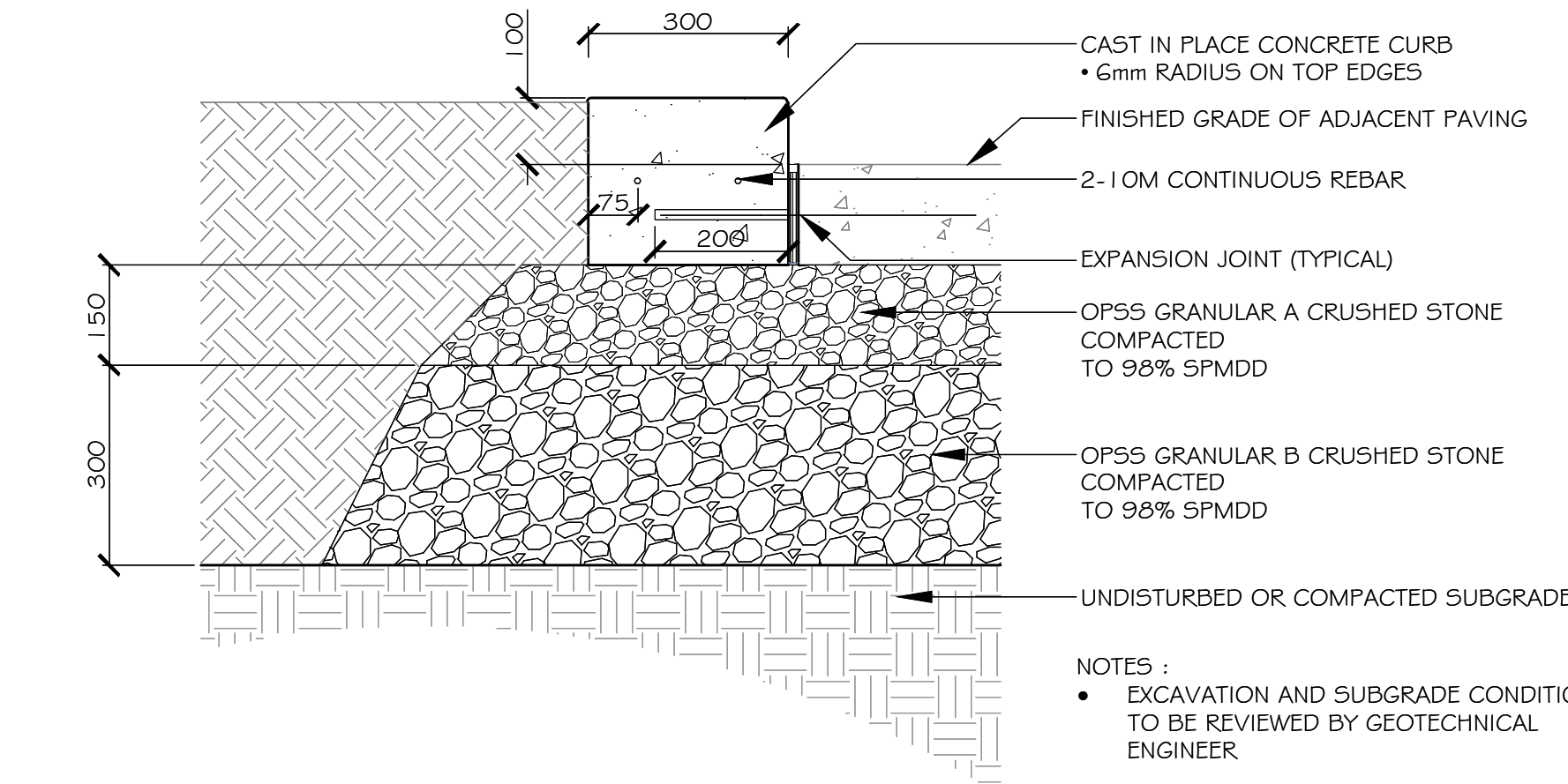
Scale: 1:10



NOTES:
 1. INSTALL NON-WOVEN CLASS 1 GEOTEXTILE AS PER MS-22.15

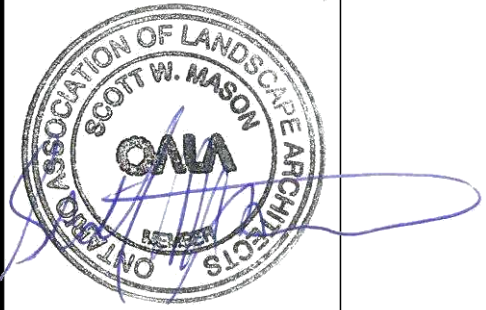
8 CONCRETE ON STRUCTURAL SOIL CELL

Scale: 1:10



9 LANDSCAPE CURB

Scale: 1:10



2	REISSUED FOR ZONING AND OPA	10 APR 2026
1	ISSUED FOR ZONING AND OPA	2 JULY 2025

NO.: REVISION: DATE:
 ALL MEASUREMENTS ARE IN MILLIMETERS UNLESS SPECIFIED OTHERWISE. DO NOT SCALE THE DRAWINGS. ALL DRAWINGS TO BE READ IN CONJUNCTION WITH CONTRACT SPECIFICATIONS.

COPYRIGHT RESERVED. THIS DRAWING IS THE EXCLUSIVE PROPERTY OF URBANTYPOLOGY INC. AND SHALL NOT BE REPRODUCED OR USED FOR PURPOSES OTHER THAN INTENDED BY THE OWNER, WITHOUT PERMISSION.

THIS DRAWING SHALL ONLY BE USED FOR CONSTRUCTION WHEN FIRED WITH A PROFESSIONAL SEAL AND SIGNATURE BY THE LANDSCAPE ARCHITECT. IT IS THE RESPONSIBILITY OF THE CONTRACTOR TO:
 • VERIFY ALL DIMENSIONS AND CONDITIONS ON SITE.
 • REPORT ALL ERRORS AND/OR OMISSIONS TO THE CONTRACT ADMINISTRATOR.
 • COMPLY WITH ALL PERTINENT CODES, BY-LAWS AND LAWS.
 • VERIFY LOCATION OF ALL UNDERGROUND SERVICES AND UTILITIES WITH RESPECTIVE AUTHORITIES PRIOR TO COMMENCEMENT OF WORK.

PROJECT:
**1994 SCOTT STREET
 PARK RIVER PROPERTIES**
 LOCATION:
**1994 SCOTT STREET
 OTTAWA, ON**

DRAWN: SS, SG START DATE:
 CHECKED: SM 25 MAR, 2025

DRAWING:
LANDSCAPE DETAILS

SCALE: AS NOTED PAGE SIZE: 24X36
 PROJECT NUMBER: 24.46

NORTH: SHEET NO.:

L3.0

