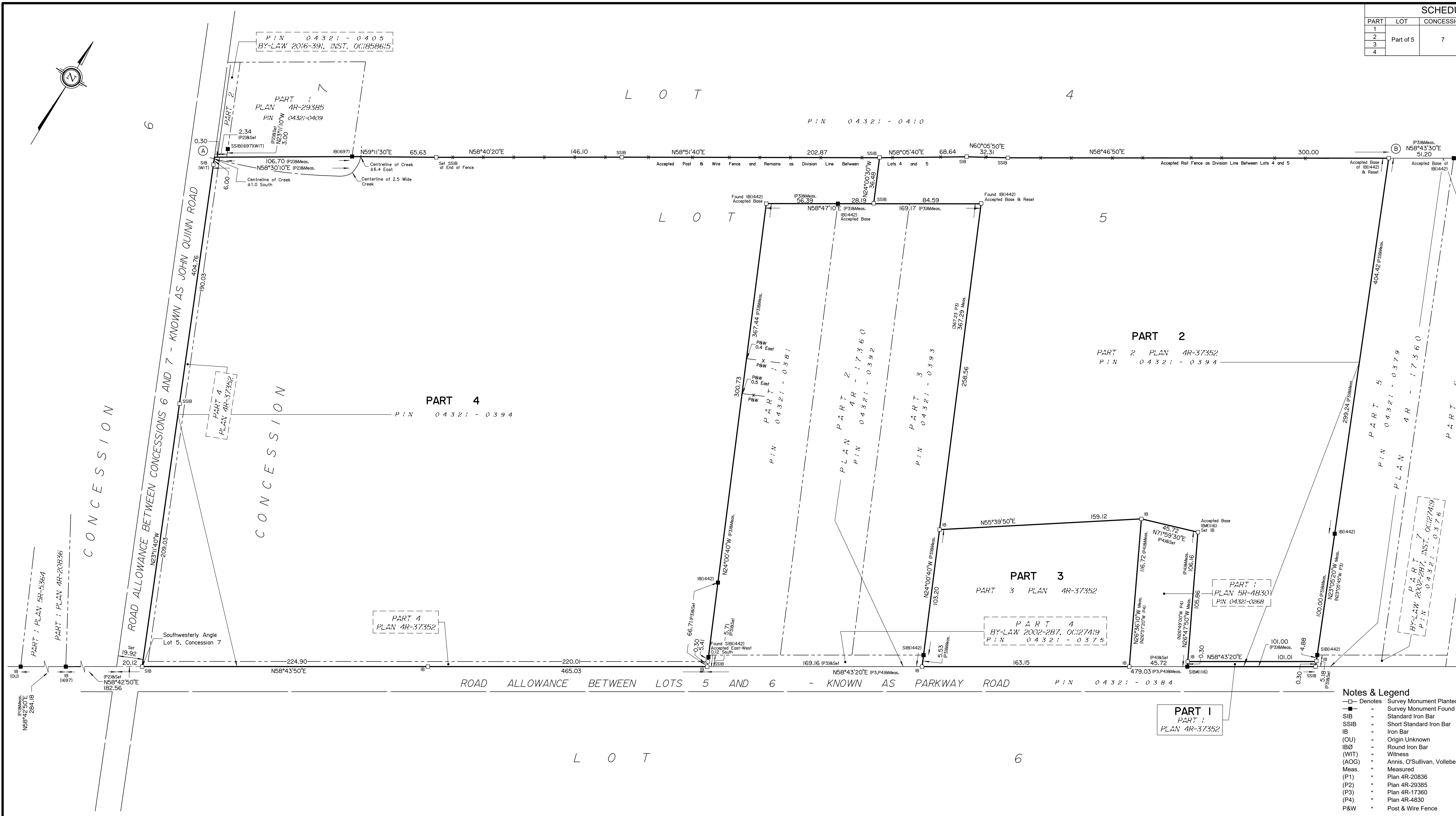


| SCHEDULE |           |            |                   |
|----------|-----------|------------|-------------------|
| PART     | LOT       | CONCESSION | PIN               |
| 1        |           |            |                   |
| 2        | Part of 5 | 7          | All of 04321-0394 |
| 3        |           |            |                   |
| 4        |           |            |                   |



**PLAN OF SURVEY OF  
PART OF LOT 5  
CONCESSION 7  
(Geographic Township of Osgoode)  
CITY OF OTTAWA**

Surveyed by Annis, O'Sullivan, Vollebakk Ltd.  
Scale 1 : 1500

The intended plot size of this plan is 914 mm in width by 457 mm in height when plotted at a scale of 1:1500.

**Metric**  
DISTANCES AND COORDINATES SHOWN ON THIS PLAN ARE IN METRES AND CAN BE CONVERTED TO FEET BY DIVIDING BY 0.3048.

**Surveyor's Certificate**  
I CERTIFY THAT:  
1. This survey and plan are correct and in accordance with the Surveys Act, the Surveyors Act, and the regulations made under them.  
2. The survey was completed on February 19, 2026.

Date \_\_\_\_\_  
Tyler J. Allison  
Ontario Land Surveyor

This plan of survey relates to AOLS Plan Submission form number: V-129328.

Distances shown on this plan are ground distances and can be converted to grid distances by multiplying by the combined scale factor of 0.99996.

Bearings & Coordinates are grid, derived from Can-Net Real Time Network GPS observations on reference points A and B, shown hereon, having a are referenced to Specified Control Points 01919760735 and 01919871649, MTM Zone 9 (76°30' West Longitude ) NAD-83 (original).

For bearing comparisons, a rotation of 0°50'30" counter-clockwise was applied to bearings on Plan (P1). A rotation of 0°42'20" counter-clockwise was applied to bearings on Plan (P2). A rotation of 0°10'00" counter-clockwise was applied to bearings on Plans (P3) & (P3).

Coordinates are derived from Can-Net Real Time Network GPS observations referenced to Specified Control Points 01919760735 and 01919871649, MTM Zone 9 (76°30' West Longitude) NAD-83 (original).

Coordinate values are to urban accuracy in accordance with O. Reg. 216/10.

|               |          |            |        |           |
|---------------|----------|------------|--------|-----------|
| . 01919760735 | Northing | 5026903.34 | Eastng | 376968.72 |
| . 01919871649 | Northing | 5007189.87 | Eastng | 372435.05 |
| . Point A     | Northing | 5016205.13 | Eastng | 381241.50 |
| . Point B     | Northing | 5016684.45 | Eastng | 382032.10 |

Caution: Coordinates cannot, in themselves, be used to re-establish corners or boundaries shown on this plan.

- Notes & Legend**
- Denotes Survey Monument Planted
  - Survey Monument Found
  - SIB Standard Iron Bar
  - SSIB Short Standard Iron Bar
  - IB Iron Bar
  - (OU) Origin Unknown
  - IBØ Round Iron Bar
  - (WIT) Witness
  - (AOG) Annis, O'Sullivan, Vollebakk Ltd.
  - Meas. Measured
  - (P1) Plan 4R-20836
  - (P2) Plan 4R-29385
  - (P3) Plan 4R-17360
  - (P4) Plan 4R-4830
  - P&W Post & Wire Fence

**ANNIS, O'SULLIVAN, VOLLEBEKK LTD.**  
165 Bay Street  
Embrun, Ont. K0A 1W1  
Phone: (613) 443-3364  
Email: Embrun@osvlltd.com

Ontario Land Surveyors Job No. E-5417-25