

- GENERAL NOTES:**
- IT IS THE RESPONSIBILITY OF THE APPROPRIATE CONTRACTOR OR OFFICIAL TO REPORT ANY ERRORS, OMISSIONS OR DISCREPANCIES ON THIS PLAN WITH ACTUAL SITE CONDITIONS TO THE LANDSCAPE ARCHITECT BEFORE PROCEEDING WITH CONSTRUCTION.
  - THE CONTRACTOR IS TO NOTIFY ALL UTILITY COMPANIES AND AUTHORITIES PRIOR TO ANY EXCAVATION AND ASCERTAIN LOCATIONS OF UNDERGROUND SERVICES.
  - THE CONTRACTOR IS TO REINSTATE ALL AREAS AND ITEMS DAMAGED AS A RESULT OF CONSTRUCTION ACTIVITY.
  - THE CONTRACTOR IS TO COMPLY WITH ALL PERTINENT CODES AND BY-LAWS.
  - THE CONTRACTOR IS TO MAINTAIN A POSITIVE SURFACE RUN-OFF THROUGHOUT THE ENTIRE CONSTRUCTION PERIOD.
  - THE LANDSCAPE ARCHITECT IS NOT RESPONSIBLE FOR SUBSURFACE CONDITIONS.
  - THE CONTRACTOR IS TO IDENTIFY ALL EXISTING TREES TO REMAIN ON SITE WITH THE LANDSCAPE ARCHITECT PRIOR TO CONSTRUCTION.
  - THE CONTRACTOR IS TO STAKE THE PROPOSED LOCATION OF ALL PLANT MATERIAL IN CONJUNCTION WITH THE LANDSCAPE ARCHITECT PRIOR TO EXCAVATION.
  - MINIMUM DISTANCES FOR SELECTED DECIDUOUS TREES ARE AS FOLLOWS:
    - BUILDING FOUNDATIONS - 7.5M
    - SIDEWALKS - 1.5M
    - PUBLIC STREETS - 2.5M
    - UNDERGROUND INFRASTRUCTURE - 2.0M
  - ALL TREES WITHIN 1M OF UNDERGROUND UTILITY TRENCHES ARE TO BE EXCAVATED BY HAND.
  - REMOVE ALL PROTECTIVE WRAPPING FROM TREE TRUNKS AFTER INSTALLATION.
  - STAKING OF TREES SHALL ONLY BE PERFORMED IF NECESSARY.
  - ENSURE THAT MULCH IS PULLED BACK A MINIMUM DISTANCE OF 75MM FROM BASE OF TREE TRUNK.

**40 YEAR CANOPY CALCULATION:**

- 6,245.4m<sup>2</sup> Site Limit of Work
- (5) Large Deciduous Trees Proposed (177m<sup>2</sup> ea.)
- (4) Medium Deciduous Trees Proposed (79m<sup>2</sup> ea.)
- (10) Small Deciduous Trees Proposed (16m<sup>2</sup> ea.)

= 1,361m<sup>2</sup> canopy cover = 21.8% canopy cover

\*Large deciduous tree calculated at 15m spread, Medium deciduous tree calculated at 10m spread, small deciduous tree calculated at 4.5m spread; Conifer tree calculated at 5m spread.

This Landscape Plan has been developed in accordance with the Geotechnical Report (Paterson Group dated May 23, 2025, PG7518-1).

CLIENT

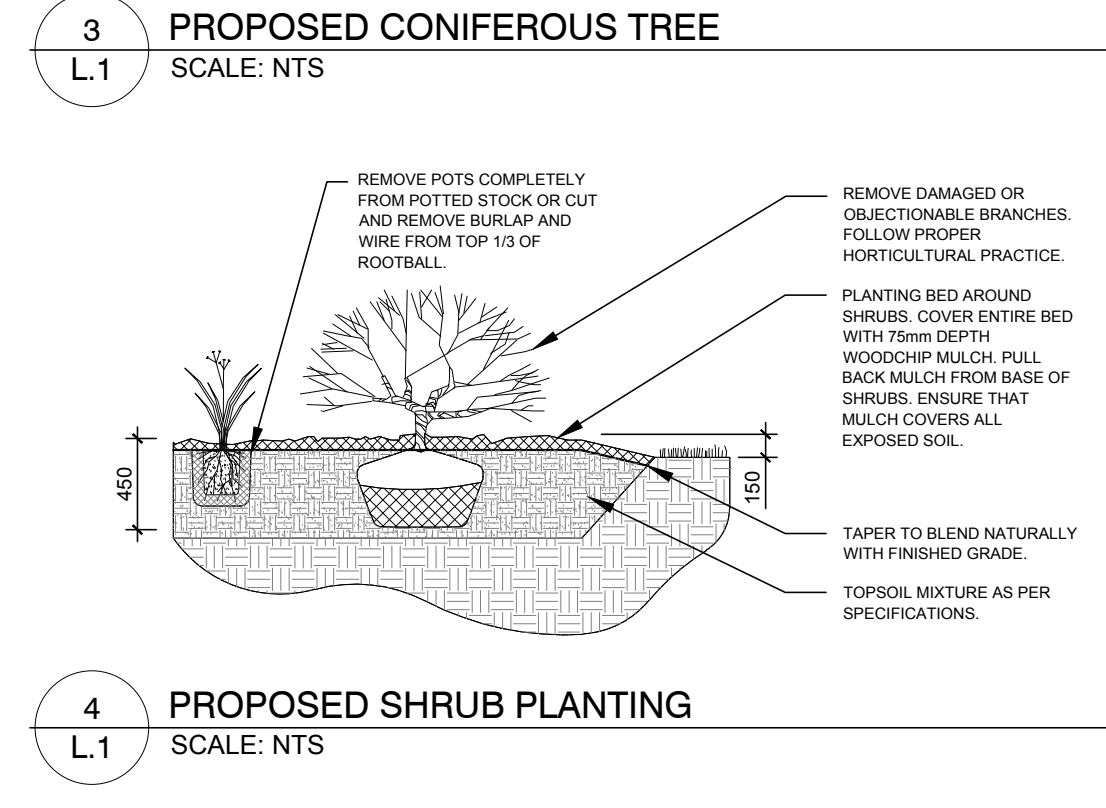
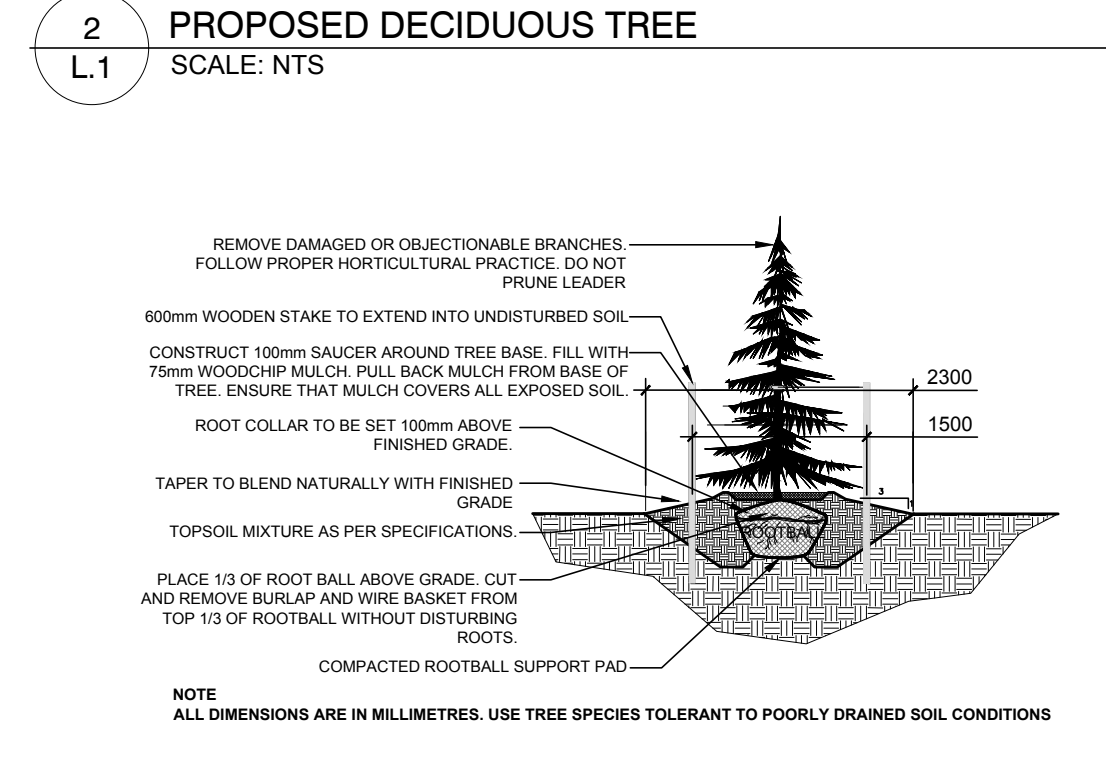
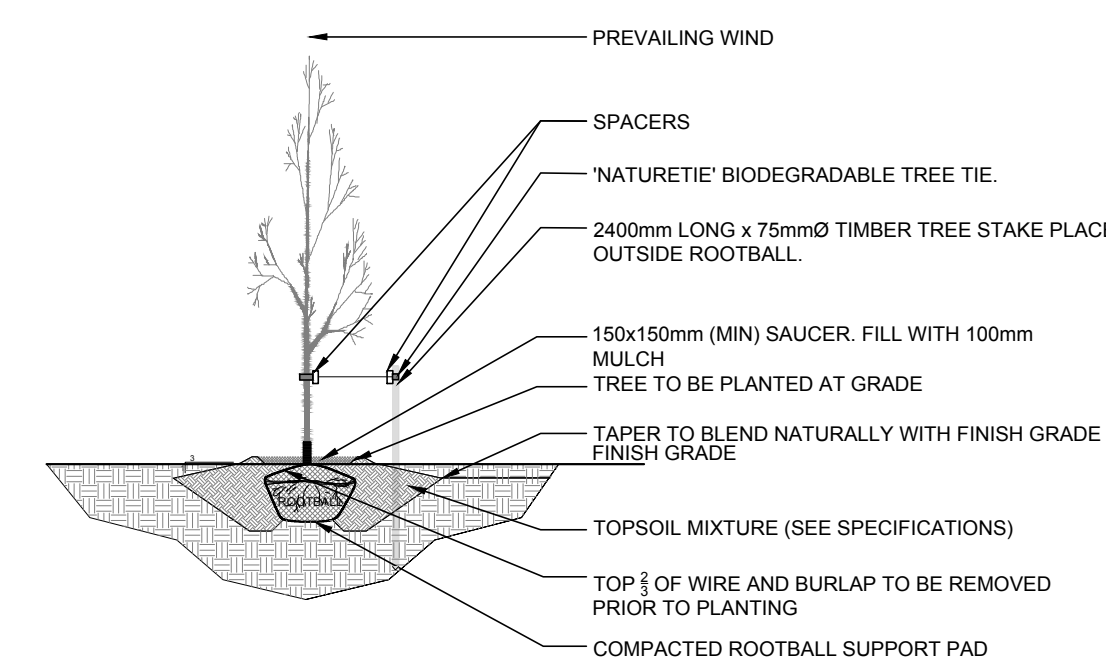
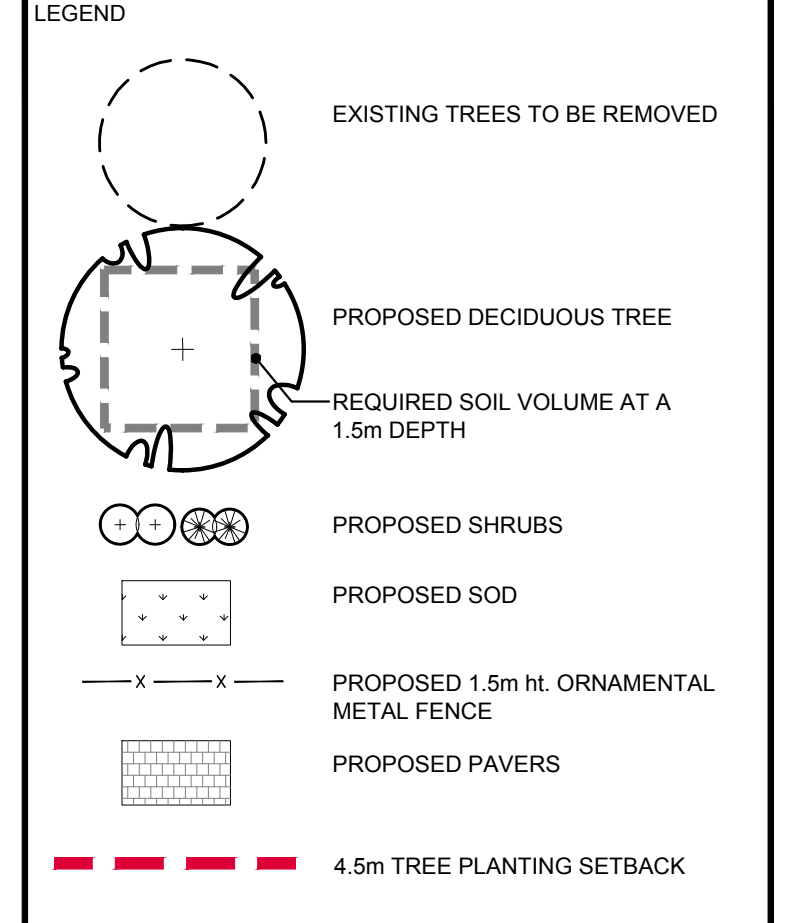
**CLARIDGE HOMES**

**RIVERSTONE**  
RETIREMENT COMMUNITIES

CONSULTANTS

ARCHITECTS:  
NEUF ARCHITECTS  
2000 ave McGill College, suite 600  
Montreal, Quebec H3A 3H4

CIVIL ENGINEERS:  
NOVATECH ENGINEERING CONSULTANTS LTD.  
Suite 200, 240 Michael Cowland Drive,  
Ottawa, ON K2M 1P6



**1 TREE CONSERVATION REPORT & LANDSCAPE PLAN**  
SCALE: 1:200

**EXISTING TREE LIST**

KEY	QTY	BOTANICAL NAME	COMMON NAME	SIZE	CONDITION	CRITICAL ROOT ZONE	ACTION	OWNERSHIP
WI	1	Salix	Willow	4x180-250 mm ea	GOOD		Within the proposed construction area. To be removed	Private

**PROPOSED PLANT LIST**

KEY	QTY	BOTANICAL NAME	COMMON NAME	SIZE	CONDITION	OWNERSHIP	REMARKS
*FM	3	Acer x 'Freemanii'	Freeman's Maple	50mm cal.	B&B	Private	Large tree
*HB	3	Celtis occidentalis	Hackberry	50mm cal.	B&B	Private	Medium tree
JTL	3	Syringa rebotata	Japanese Tree Lilac	50mm cal.	B&B	Private	Small tree, Multi-stem
*SB	7	Amelanchier canadensis	Shadblow Serviceberry	50mm cal.	B&B	Private	Small tree, Multi-stem
SM	2	Acer saccharum	Sugar Maple	50mm cal.	B&B	Private	Large tree
WB	1	Betula pendula	Weeping Birch	50mm cal.	B&B	Private	Medium tree

\*INDICATES NATIVE SPECIES.

**PROPOSED PLANT LIST**

KEY	QTY	BOTANICAL NAME	COMMON NAME	SIZE	CONDITION	SPACING
<b>SHRUBS &amp; GRASSES</b>						
AH	5	Hydrangea arborescens 'Annabelle'	Annabelle Hydrangea	3 gal. pot	Potted	800 mm o.c.
ARW	5	Salix purpurea 'Nana'	Dwarf Arctic Willow	1 gal. pot	Potted	900 mm o.c.
AW	17	Spiraea x bumalda 'Anthony Waterer'	Anthony Waterer Spiraea	600mm ht.	Potted	1000 mm o.c.
BW	13	Buxus microphylla var. 'koreana'	Korean Boxwood	800mm ht.	Potted	500 mm o.c.
BS	26	Spiraea x vanhouttei	Bridal Wreath Spiraea	600mm ht.	Potted	1500 mm o.c.
CE	174	Thuja occidentalis 'Hedge'	Cedar Hedge	1200 mm ht.	Bare Root	400 mm o.c.
CPL	7	Syringa vulgaris	Common Purple Lilac	1200mm ht.	Potted	1500 mm o.c.
DW	15	Cornus sericea	Red Osier Dogwood	800mm ht.	Potted	1200 mm o.c.
GS	21	Spiraea x arguta	Garland Spiraea	800mm spr.	Potted	1000 mm o.c.
FO	4	Forsythia ovata 'Ottawa'	Ottawa Forsythia	800mm spr.	Potted	1000 mm o.c.
KF	30	Calamagrostis 'Karl Foerster'	Karl Foerster Grass	250mm pot	Potted	800 mm o.c.
MP	22	Pinus mugo 'Pumilio'	Dwarf Mugo Pine	600mm spr.	Potted	800 mm o.c.
SJ	35	Juniperus sabina	Savin Juniper	600mm spr.	Potted	1000 mm o.c.

**JAMES B. LENNOX & ASSOCIATES INC.**  
LANDSCAPE ARCHITECTS  
3332 CARLING AVE. OTTAWA, ONTARIO K2H 5A5  
Tel. (613) 722-5168 Fax. (613) 722-5168

PROJECT  
DÉCOEUR RETIREMENT HOME  
2380 Tenth Line Road, Ottawa

DRAWING  
TREE CONSERVATION REPORT AND LANDSCAPE PLAN

STAMP

SCALE: AS SHOWN

START DATE: JULY, 2025

PROJECT NO.: 25CLG2539

DRAWING NO.: L.1

PLOT SIZE ARCH-D