

ADDITIONAL INFORMATION  
As required under section 51(17) of the  
Planning Act R.S.O. 2001

- (a)(b)(e)(f)(g)(j) and (i) - As shown on this Plan.
- (c) - As shown on this Draft and Key Plan
- (d) - Land to be used in accordance with the Schedule of Land Use.
- (h)(k) - Full Municipal Services
- (l) - Offshore Marine Deposits of clay, silt, clay and silt, Bedrock Ottawa Formation, limestone

DRAFT PLAN OF SUBDIVISION OF  
**PART OF LOT 5  
 CONCESSION 3 (OTTAWA FRONT)**  
 GEOGRAPHIC TOWNSHIP OF GLOUCESTER  
 NOW IN THE  
**CITY OF OTTAWA**  
 AND  
**PART OF BLOCK 58  
 AND  
 LOTS 28 AND 29  
 REGISTERED PLAN 4M-948  
 CITY OF OTTAWA**

SCALE 1 : 1000

METRIC DISTANCES AND/OR COORDINATES SHOWN ON THIS PLAN ARE IN METRES AND CAN BE CONVERTED TO FEET BY DIVIDING BY 0.3048.

Schedule of Land Use			
Land Use	Blocks	Units	
Singles Detached	8 to 20, 22 to 23, 48, 63 to 65		9,882 ha.
Regular Townhome	3 to 7, 44 to 47, 66 and 67		2,321 ha.
Open Space	62		0,346 ha.
Walkways	51 to 57		0,195 ha.
Park	21, 26, 58 and 59		1,555 ha.
Future Mixed Use	1, 2, 49 and 50		9,736 ha.
Reserves	60 and 61		0,001 ha.
Streets			7,187 ha.
<b>Total</b>			<b>31,223 ha.</b>

**OWNER'S CERTIFICATE**

BRAM POTCHEN, BEING THE REGISTERED OWNER OF THE SUBJECT LANDS HEREBY AUTHORIZES J. D. BARNES LIMITED TO PREPARE AND SUBMIT THIS DRAFT PLAN OF SUBDIVISION FOR APPROVAL.

DATE: \_\_\_\_\_ BY: BRAM POTCHEN, PRESIDENT (I HAVE THE AUTHORITY TO END THE CORPORATION)

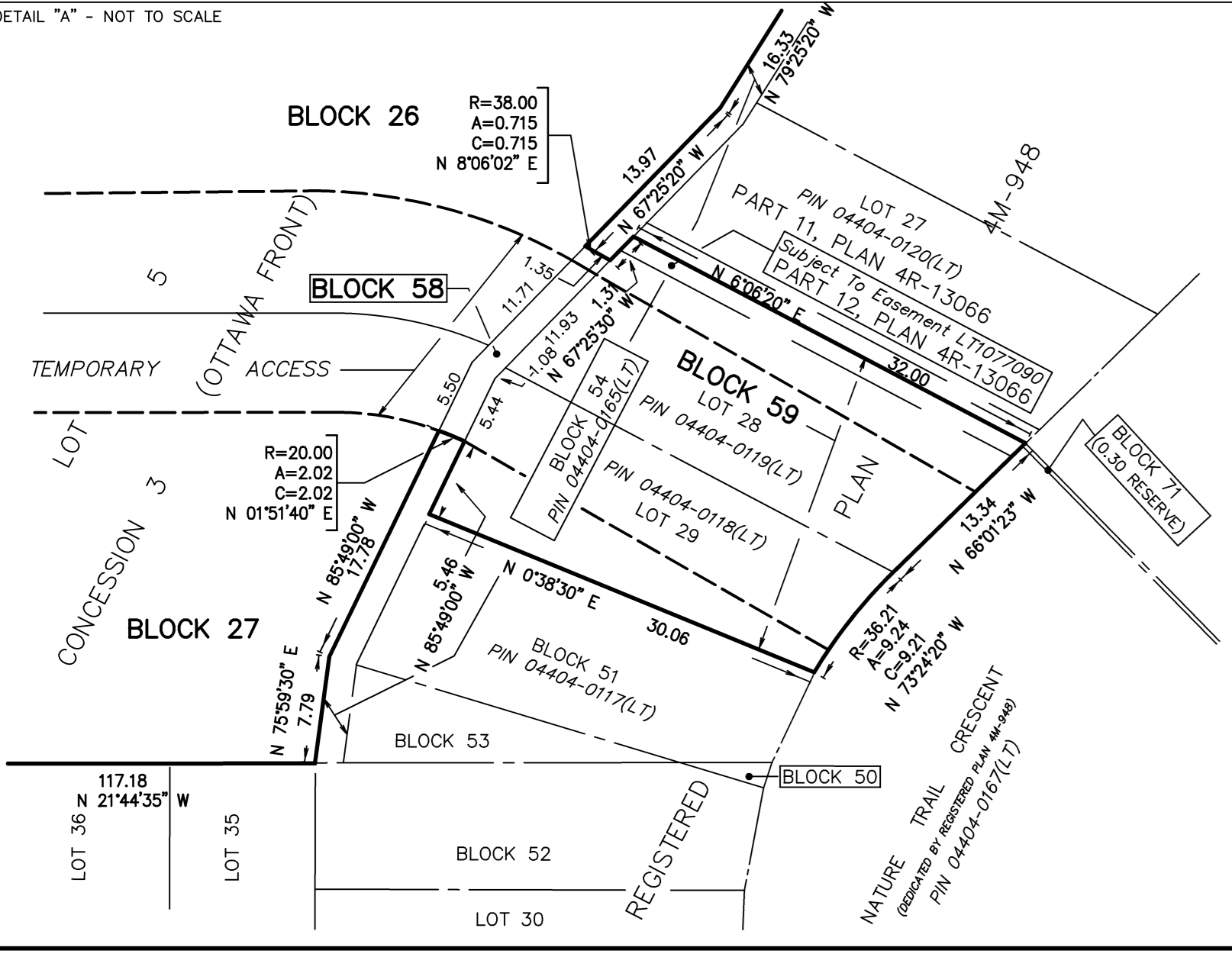
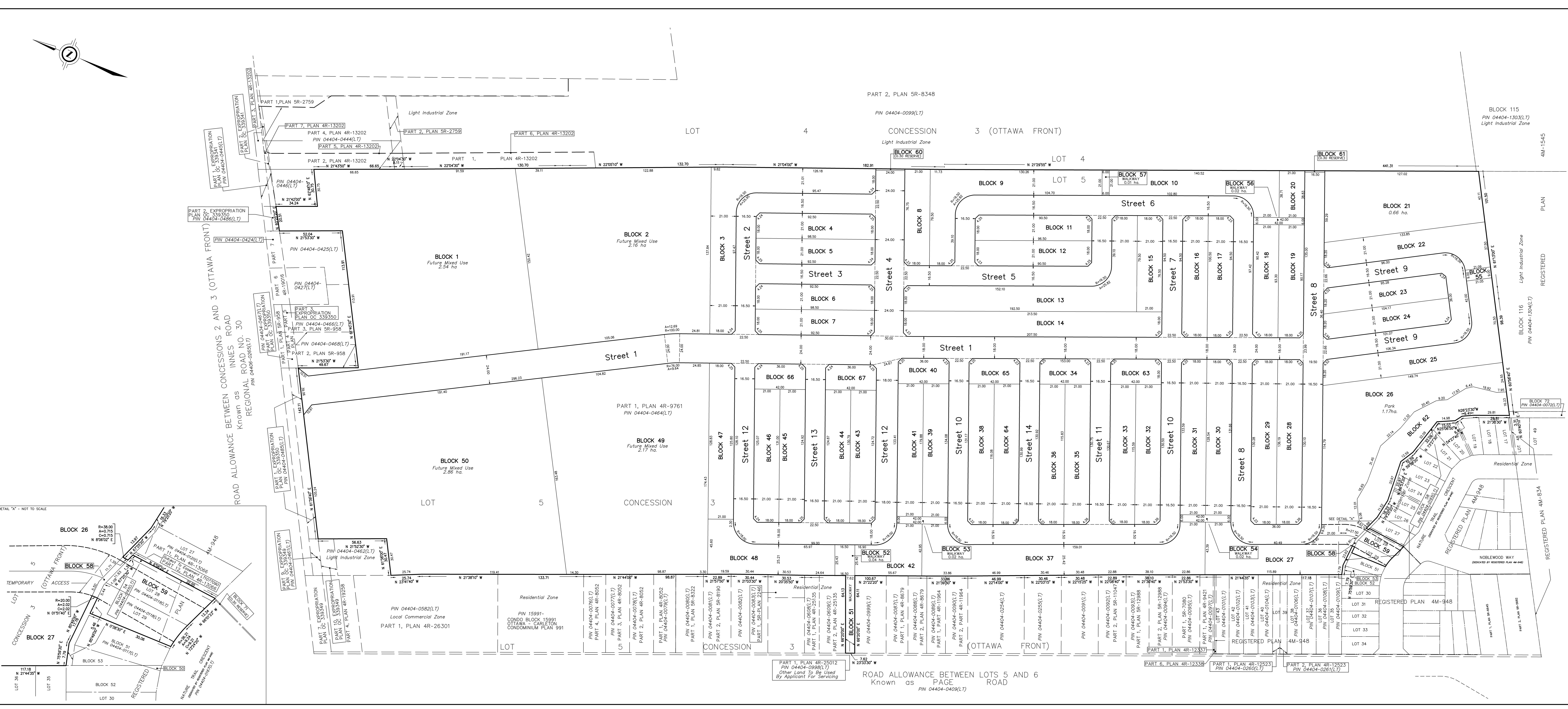
**SURVEYOR'S CERTIFICATE**  
I HEREBY CERTIFY THAT THE BOUNDARIES OF THE LAND TO BE SUBDIVIDED ARE CORRECTLY SHOWN.

DATE: December 16, 2016 BY: GEORGE ZERVOS, PRESIDENT ONTARIO LAND SURVEYOR

NOTE: BOUNDARY INFORMATION IS COMPILED FROM REGISTERED PLANS WHICH HAS NOT BEEN VERIFIED BY FIELD SURVEY.



DRAWN BY: YJ CHECKED BY: XXXX REFERENCE NO: 16-10-116-01  
FILE: 2-116-10-116(01)116-draftplan.dwg DATE: 19/09/2017



ROAD ALLOWANCE BETWEEN LOTS 5 AND 6  
Known as PAGE ROAD  
PIN 04404-0409(LT)

ROAD ALLOWANCE BETWEEN CONCESSIONS 2 AND 3 (OTTAWA FRONT)  
Known as INNES ROAD  
REGIONAL ROAD NO. 30  
PIN 04404-0268(LT)

DETAIL "A" - NOT TO SCALE