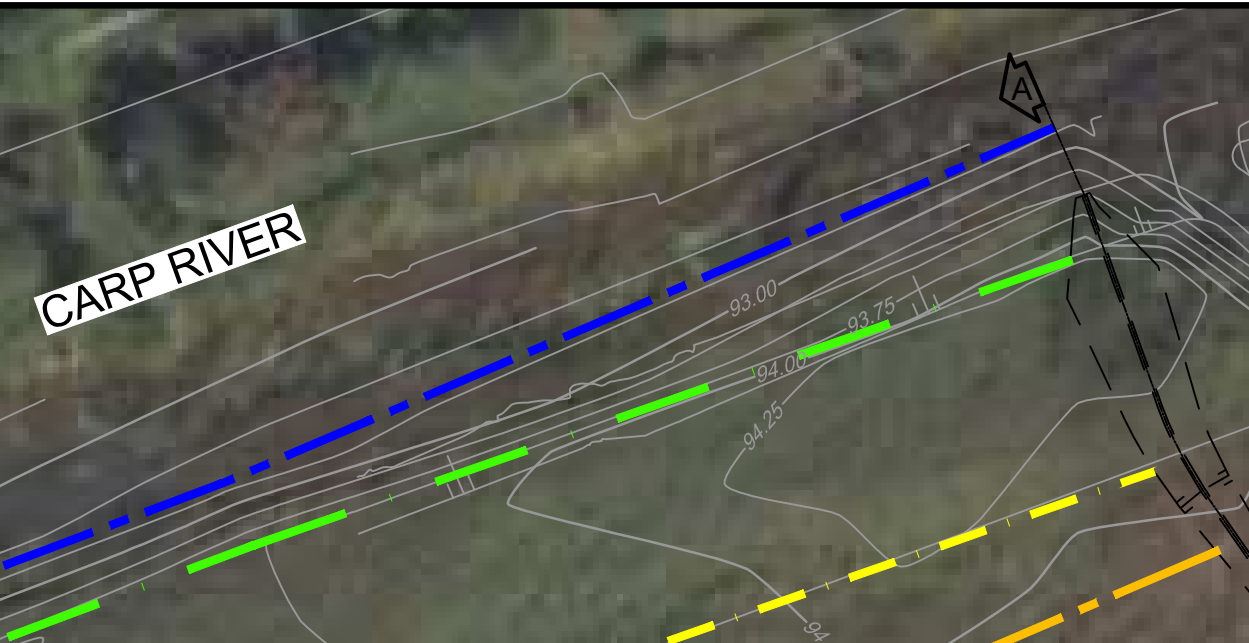
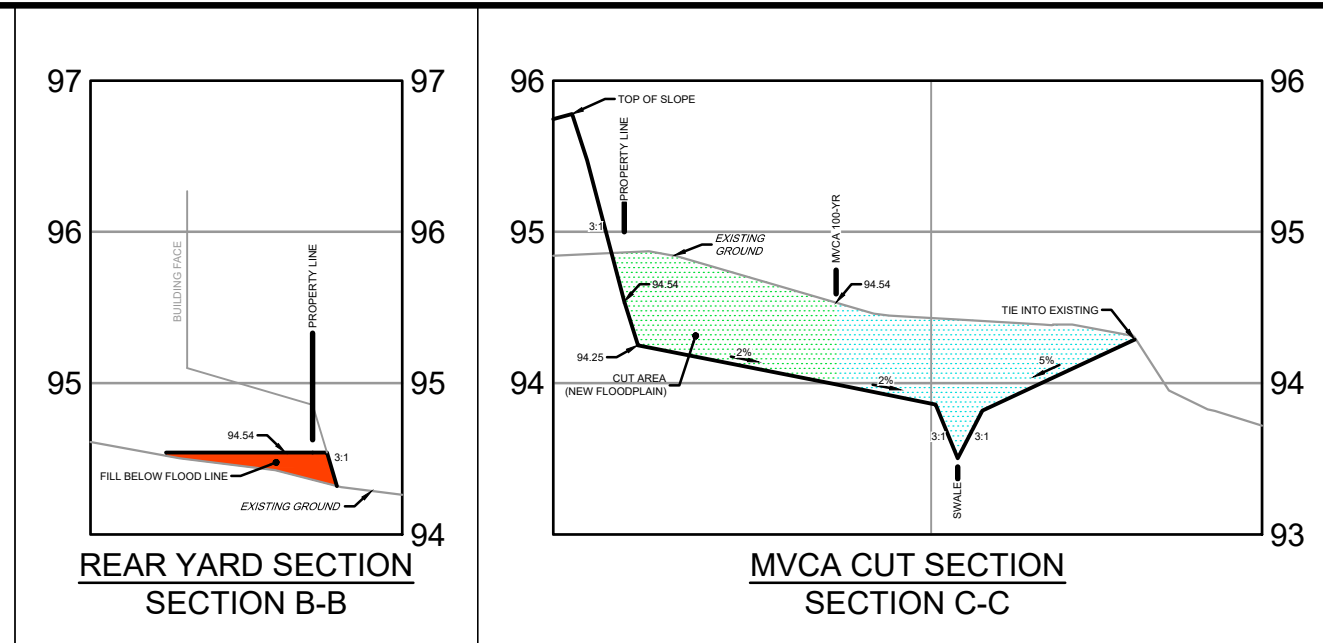
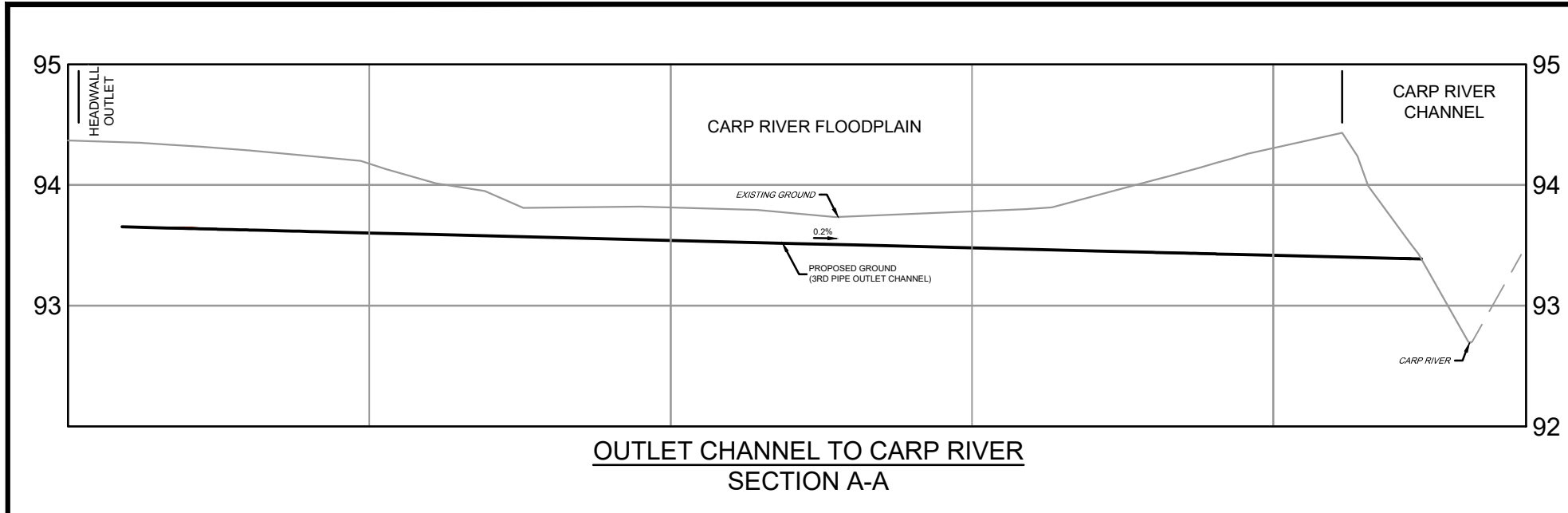


**LEGEND**

- FILL 94.54 - 94.29
- FILL 94.29 - 94.04
- CUT 94.54 - 94.04
- CUT WITHIN 100-YR



**Fill Volumes**

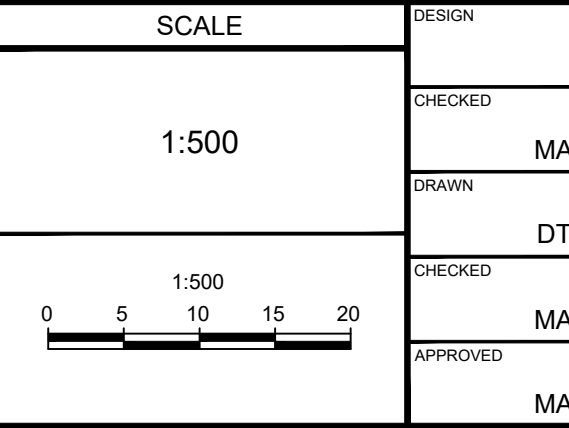
Elevation Range	Depth Below 100-YR Floodline (94.54)	Fill Volume (m³)
94.54 - 94.29	0.00 - 0.25	160.0
94.29 - 94.04	-0.25 - 0.50	16.7
<b>Total Fill</b>		<b>176.7</b>

**Cut Volumes**

Elevation Range	Depth Below 100-YR Floodline (94.54)	Cut Volume (m³)
94.54 - 94.29	0.00 - 0.25	311.2
94.29 - 94.04	-0.25 - 0.50	335.6
<b>Total Cut</b>		<b>646.8</b>

**NOTE:**  
THE POSITION OF ALL POLE LINES, CONDUITS, WATERMANS, SEWERS AND OTHER UNDERGROUND AND OVERGROUND UTILITIES AND STRUCTURES IS NOT NECESSARILY SHOWN ON THE CONTRACT DRAWINGS, AND WHERE SHOWN, THE ACCURACY OF THE POSITION OF SUCH UTILITIES AND STRUCTURES IS NOT GUARANTEED. BEFORE STARTING WORK, DETERMINE THE EXACT LOCATION OF ALL SUCH UTILITIES AND STRUCTURES AND ASSUME ALL LIABILITY FOR DAMAGE TO THEM.

No.	REVISION	DATE	BY
1.	DP COMMENT RESOLUTION	JAN 2026	MAB
2.	MVCA CUT FILL APPLICATION	JAN 2026	MAB
3.	REVISED MVCA CUT FILL APPLICATION	APR 13/26	MAB
4.	DP COMMENT RESOLUTION	MAY 22/26	MAB
	UNDER DESIGN	JUN 2/26	



**FOR REVIEW ONLY**

DESIGN: MAB  
CHECKED: DTD  
DRAWN: MAB  
APPROVED: MAB

**L.R. WILSON**  
10180055  
PROVINCE OF ONTARIO

**M.A. BISSETT**  
PROVINCE OF ONTARIO

**NOVATECH**  
Engineers, Planners & Landscape Architects  
Suite 200, 240 Michael Cowpland Drive  
Ottawa, Ontario, Canada K2M 1P6  
Telephone: (613) 254-9643  
Facsimile: (613) 254-5867  
Website: www.novatech-eng.com

CITY OF OTTAWA  
560 HAZELDEAN ROAD - DOUBLE DECK SUBDIVISION

**CUT / FILL AREA PLAN**

PROJECT No: 100057-05  
REV: 4  
DRAWING No: 100057-CFA

C:\Users\10007\OneDrive\Documents\CAD\100057-CFA.dwg, P:\ANS-B1 - Jun 02, 2026 - 2:20pm, employee