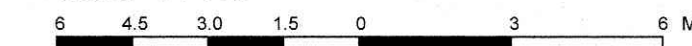


PART OF LOT 4
CONCESSION 3 (OTTAWA FRONT)
Geographic Township of Gloucester
CITY OF OTTAWA

Surveyed by Annis, O'Sullivan, Vollebek Ltd.

Scale 1 : 150



Metric

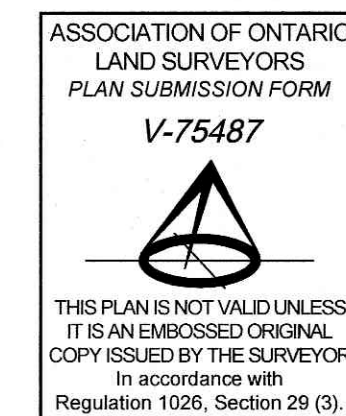
DISTANCES SHOWN ON THIS PLAN ARE IN METRES AND
CAN BE CONVERTED TO FEET BY DIVIDING BY 0.3048

Surveyor's Certificate

I CERTIFY THAT:
1. This survey and plan are correct and in accordance with the Surveys Act, the Surveyors Act and the regulations made under them.
2. The survey was completed on the 31st day of May, 2024.

June 12, 2024
Date

Wen Jiang
Wen Jiang
Ontario Land Surveyor



Notes & Legend

- Denotes Survey Monument Planted
- SIB Standard Iron Bar
- SSIB Short Standard Iron Bar
- IB Iron Bar
- CP Concrete Pin
- (WIT) Witness
- Meas. Measured
- (AOC) Annis, O'Sullivan, Vollebek Ltd.
- (P1) Plan 4R-27208
- (P2) Plan 4R-24060
- (P4) Plan 4R-28602
- RWT Timber Retaining Wall
- CLF Chain Link Fence
- BF Board Fence
- CL Centreline
- T/G Top of Grate
- CB Catch Basin
- CB-I Catch Basin - Inlet
- MI-ST Maintenance Hole (Storm Sewer)
- MH-S Maintenance Hole (Sanitary)
- VC Valve Chamber (Waterman)
- W Water Valve
- OW Overhead Wires
- UP Utility Pole
- AN Anchor
- AC Air Conditioner
- GM Gas Meter
- HM Hydro Meter
- B Bollard
- S Sign
- G Gate
- MB Mail Box
- Deciduous Tree
- Coniferous Tree
- Diameter
- Location of Elevations
- Location of Top of Curb Elevations
- Location of Top of Retaining Wall Elevations

Bearings are grid, derived from Can-Net 2018 Real Time Network GPS observations and are referenced to Specified Control Points 01919680184 and 019198434761, MTM Zone 9 (76°30' West Longitude) NAD-83 (original).

ELEVATION NOTES

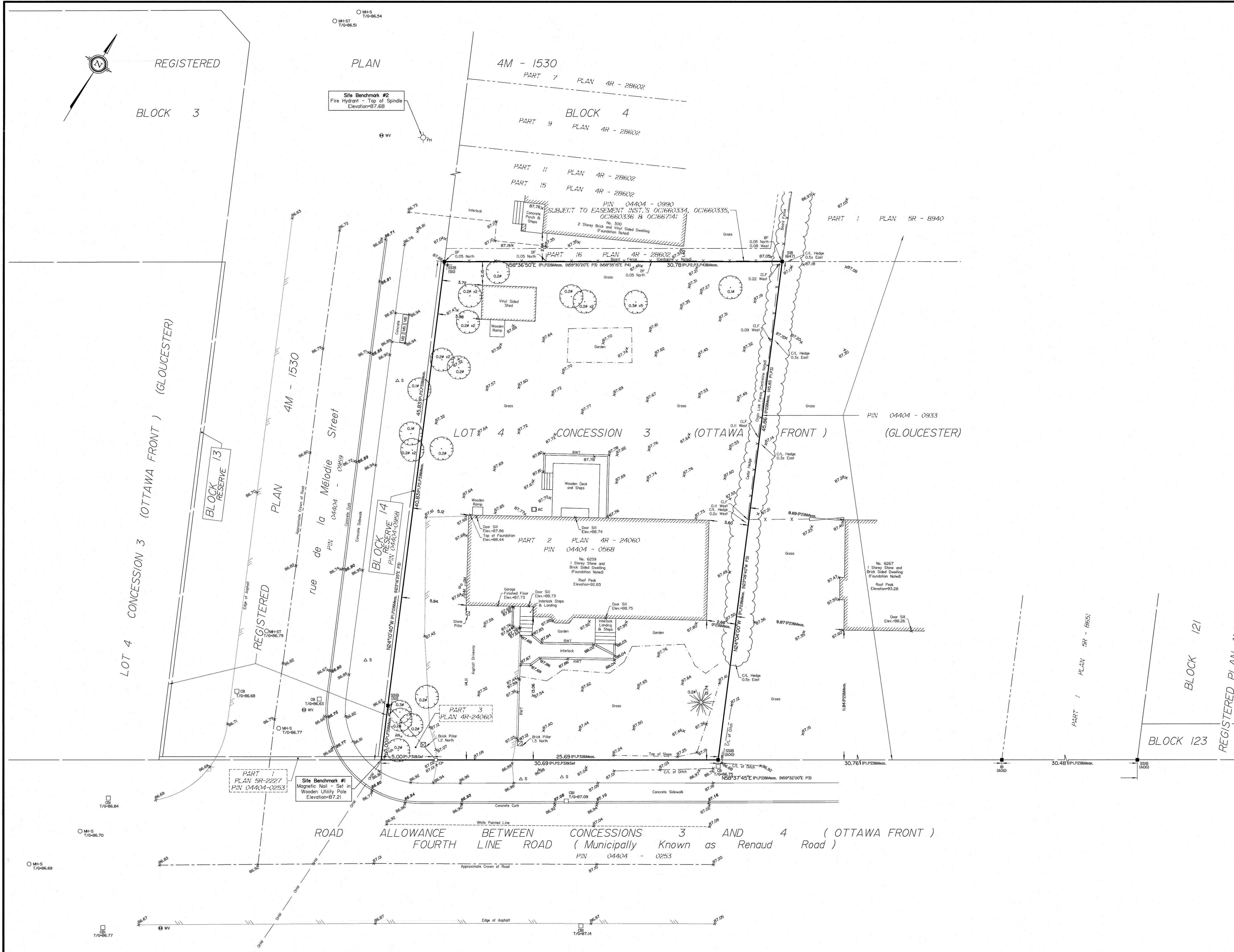
1. Elevations shown are geodetic and are referred to the CGVD28 geodetic datum.
2. It is the responsibility of the user of this information to verify that the job benchmark has not been altered or disturbed and that its relative elevation and description agrees with the information shown on this drawing.

UTILITY NOTES

1. This drawing cannot be accepted as acknowledging all of the utilities and it will be the responsibility of the user to contact the respective utility authorities for confirmation.
2. Only visible surface utilities were located.
3. A field location of underground plant by the pertinent utility authority is mandatory before any work involving breaking ground, probing, excavating, etc.

© Annis, O'Sullivan, Vollebek Ltd. 2024. THIS PLAN IS PROTECTED BY COPYRIGHT.

ANNIS, O'SULLIVAN, VOLLEBEK LTD.
 14 Concourse Gate, Suite 500
 Nepean, Ont. K2E 7S6
 Phone: (613) 727-0850 / Fax: (613) 727-1079
 Email: nepean@avll.com



01919680184_Richcraft_P14_C3_of_GL_O_F.dwg