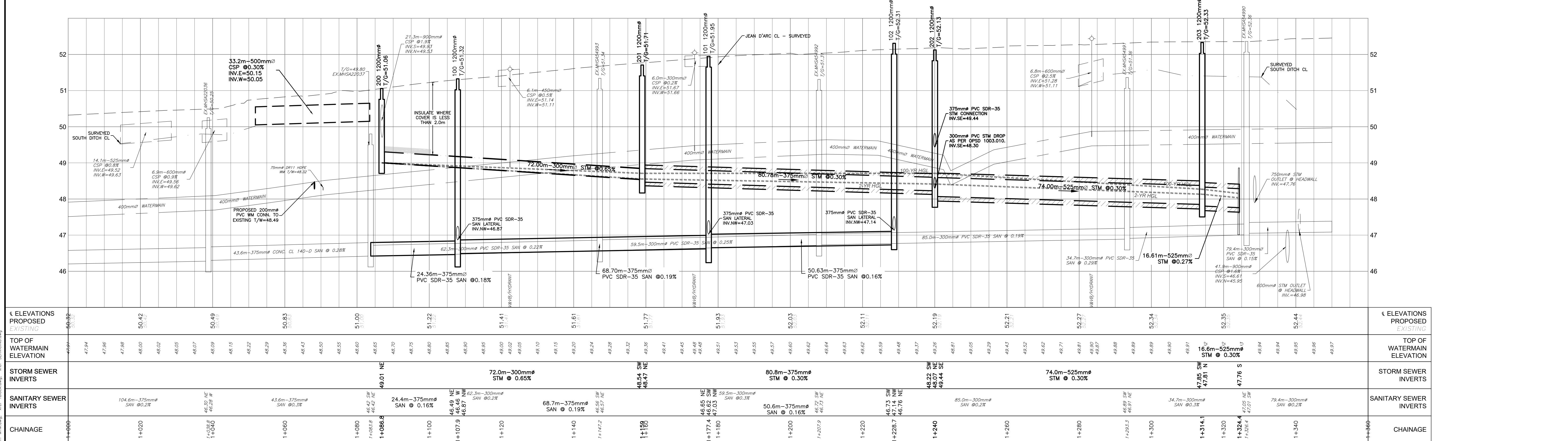


PLAN VIEW - STA.1+000 TO STA.1+360
SCALE 1:500



CAUTION
THE POSITION OF ALL POLE LINES, CONDUITS, WATERMANS, SEWERS AND OTHER UNDERGROUND AND OVERGROUND UTILITIES AND STRUCTURES IS NOT NECESSARILY SHOWN ON THE CONTRACT DRAWINGS, AND WHERE SHOWN, THE ACCURACY OF THE POSITION OF SUCH UTILITIES AND STRUCTURES IS NOT GUARANTEED. BEFORE STARTING WORK, DETERMINE THE EXACT LOCATION OF ALL SUCH UTILITIES AND STRUCTURES AND ASSUME ALL LIABILITY FOR DAMAGE TO THEM.

JOB BENCH MARK
CITY OF OTTAWA CONTROL MONUMENT 20160007 WITH AN OF ELEVATION=52.51
NORTHING=5040095.91 EASTING=384293.97

TOPOGRAPHIC INFORMATION
PART OF LOT 30, CONCESSION 1 (OLD SURVEY), GEOGRAPHIC TOWNSHIP OF CUMBERLAND, CITY OF OTTAWA. TOPOGRAPHIC INFORMATION PROVIDED BY ANNIS, O'SULLIVAN, VOLLEBEK LTD. O.L.S. (TP3882) SURVEY DATED APRIL 30, 2025. (FINAL AMENDMENT)
SITE GRID SYSTEM MTM NAD 83, ZONE 9.

REV	REVISION DESCRIPTION	DATE	BY	APPD
4	REVISED PER CITY COMMENTS	16/03/26	SAB	BMT
3	ISSUED FOR APPROVAL	18/11/25	AAS	BMT
2	ISSUED FOR APPROVAL	25/09/25	AAS	BMT
1	ISSUED FOR APPROVAL	30/05/25	SAB	BMT

SCALE
0 5m 10m 20m
HORIZONTAL 1:500
VERTICAL 1:50

DESIGNED BY
B. M. THOMAS
PROVINCE OF ONTARIO
2026-03-16

REVIEWED BY
B. M. THOMAS
PROVINCE OF ONTARIO
2026-03-16

CLIENT
TRIM 1 GP INC.
115 CHAMPAGNE AVE SOUTH
OTTAWA, ON. K1S 5V5
819.664.4195

exp. Services Inc.
1-877-888-1889 | 1-613-225-7330
1155 Wellington Street, Unit 100
Ottawa, ON K2B 8K6
Canada
www.exp.com

• BUILDINGS • EARTH & ENVIRONMENT • ENERGY •
• INDUSTRIAL • INFRASTRUCTURE • SUSTAINABILITY •

ROLE	NAME
BASE PLAN	SAB
DESIGN	JLF
CHECKED	JLF
CAD	SAB
PROJECT MANAGER	BMT
APPROVED	BMT

PROJECT
1015 TWEDDLE ROAD DEVELOPMENT
1015 TWEDDLE ROAD
OTTAWA, ONTARIO.

TITLE
JEANNE D'ARC BOULEVARD PLAN AND PROFILE STA.1+000 TO STA.1+360

PROJECT No. OTT-00259629-AD
SURVEY ACV
DATE OCT 2024
DRAWING No. C101

File name: \\s1\at\00259629-AD\00259629\1015-103-000.dwg
 User: s1\at\00259629-AD\1225-015 PM - User: s1\at\00259629-AD\1225-015 PM
 Revision: s1\at\00259629-AD\1015-103-000.dwg - s1\at\00259629-AD\1015-103-000.dwg

DD02-02-25-0038 & D07-12-25-0073