

BIRD SAFE TREATMENTS (APPLICABLE TO ALL ELEVATIONS):

a) Reduced Reflectivity at Grade
Highly reflective glass is avoided within the first 16 metres above grade, where the majority of bird collisions occur.
Spandrel panels, fritted glazing, and opaque materials are prioritized at podium levels.

b) Landscape Placement Coordination
Trees and dense plantings are coordinated with façade treatments to avoid creating the illusion of reflected habitat.
Where vegetation is located directly adjacent to glazing, bird-safe glass treatment is specified.
No clear glass corners are located directly adjacent to major tree clusters.

c) Avoidance of Through-Building Views
Ground-floor amenity areas and lobbies are designed to prevent direct "see-through" conditions.
Where transparency is required, glazing includes bird-safe markers.

Podium-Level Bird-Safe Glazing
Since collisions are most frequent within the lower 16 m:
Glazing incorporates visible markers using frit, ceramic patterns, acid-etched, or UV-patterned glass.
Pattern density follows the 2x4 rule (maximum 50mm x 100mm spacing).
Spandrel and solid panels are increased along heavily landscaped frontages.
Glass at corners is treated to eliminate transparent edge conditions.
Guardrails use fritted or opaque laminated glass rather than clear glazing.

MATERIAL LEGEND			
(A) BRICK Manufacturer: TBT Color: TBD	(E) SPANDREL PANEL Manufacturer: TBT Color: TBD	(W4) WINDOW Manufacturer: TBD	(D4) LOBBY / COMM. ENTRANCE DOOR Color: Clear Glass
(B) CURTAIN WALL Manufacturer: TBD Color: Clear Glass	(W1) WINDOW Manufacturer: TBT	(D1) PATIO DOOR Manufacturer: TBD	(D5) EXIT DOOR Manufacturer: TBD Color: TBD
(C) CONCRETE Manufacturer: TBD Color: TBD	(W2) WINDOW Manufacturer: TBD	(D2) GARAGE DOOR Manufacturer: TBD 4.6m H x 6.3m W	
(D) BRICK Manufacturer: TBD Color: TBD	(W3) WINDOW Manufacturer: TBD	(D3) GARAGE DOOR Manufacturer: TBD 4.6m H x 3m W	

NOTE: Bird-safe glazing treatment provided on all exterior glazing within the first 16m above grade and adjacent to significant landscape features, in accordance with CSA A460:19 and City of Ottawa High-Rise Design Guidelines.

NOTES GÉNÉRALES / General Notes

- Ces documents d'architecture sont la propriété exclusive de NEUF architect(e)s et ne peuvent être utilisés, reproduits ou copiés sans autorisation écrite préalable. / These architectural documents are the exclusive property of NEUF architect(e)s and cannot be used, copied or reproduced without written pre-authorization.
- Les dimensions apparaissant aux documents doivent être vérifiées par l'entrepreneur avant le début des travaux. / All dimensions which appear on the documents must be verified by the contractor before to start the work.
- Veuillez aviser l'architecte de toute dimension erreur et/ou divergences entre ces documents et ceux des autres professionnels. / The architect must be notified of all errors, omissions and discrepancies between these documents and those of the others professionals.
- Les dimensions sur ces documents doivent être lues et non mesurées. / The dimensions on these documents must be read and not measured.

ARPEUTEUR / Surveyor
Annis, O'Sullivan, Vollebek Ltd.
14 Concourse Gate, Ottawa ON K2E 7S6
T 613 727 0850 Aovltd.com

PROMOTEUR / Developer
Vuze Construction
Laperrière Ave 1600, Ottawa ON K1Z 6P5
T 619 664 4195 Vuzeconstruction.com

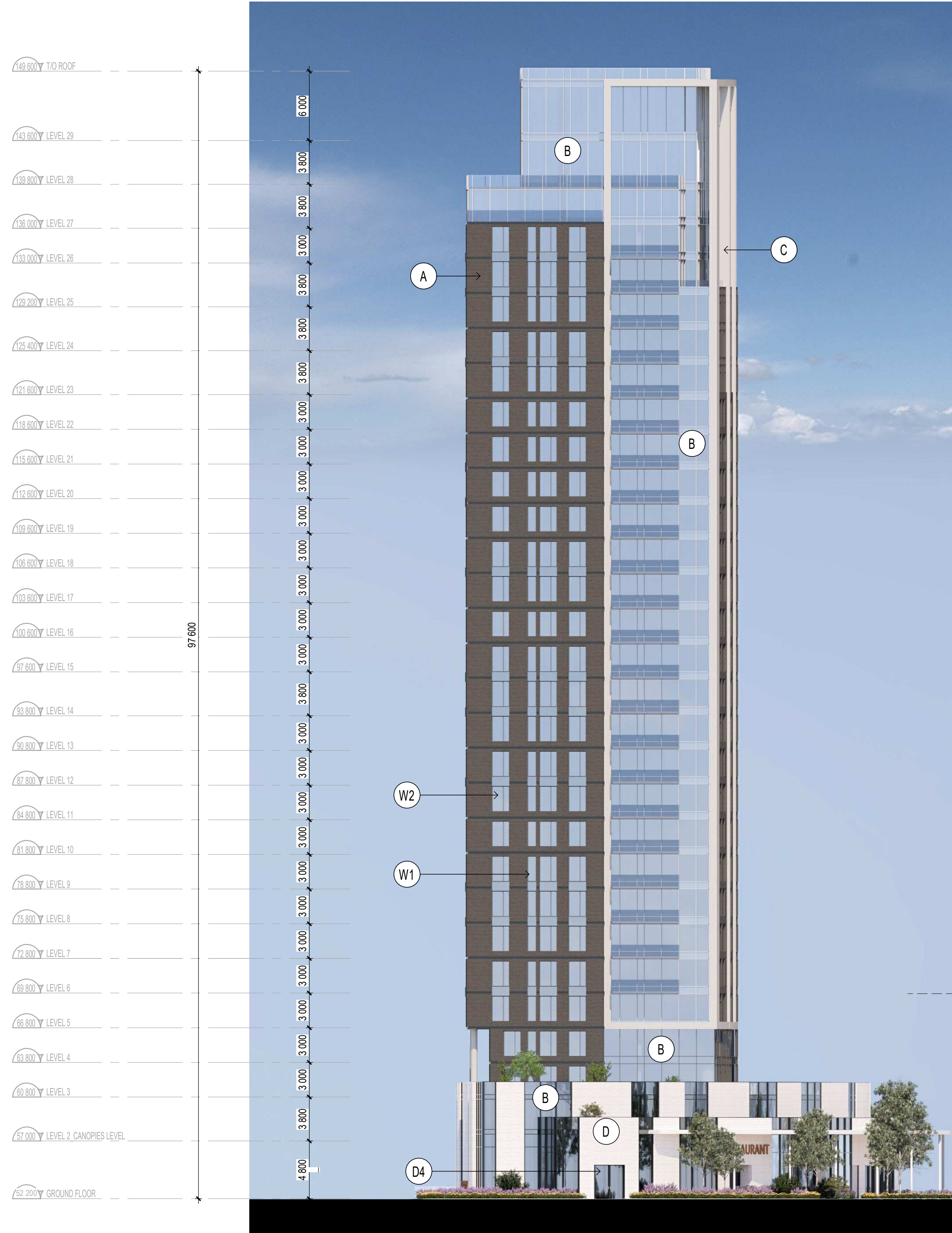
PLANIFICATEUR / Planner
Fotenn Planning and Design
420 O'Connor Street, Ottawa ON K2P 0P4
T 613 730 5709 Fotenn.com

ARCHITECTURE DE PAYSAGE / Landscape Architect
Projet Paysage
24 Montroyal West Side Sq., Montreal QC H2T 2S2
T 514 849 7700 Projetpaysage.com

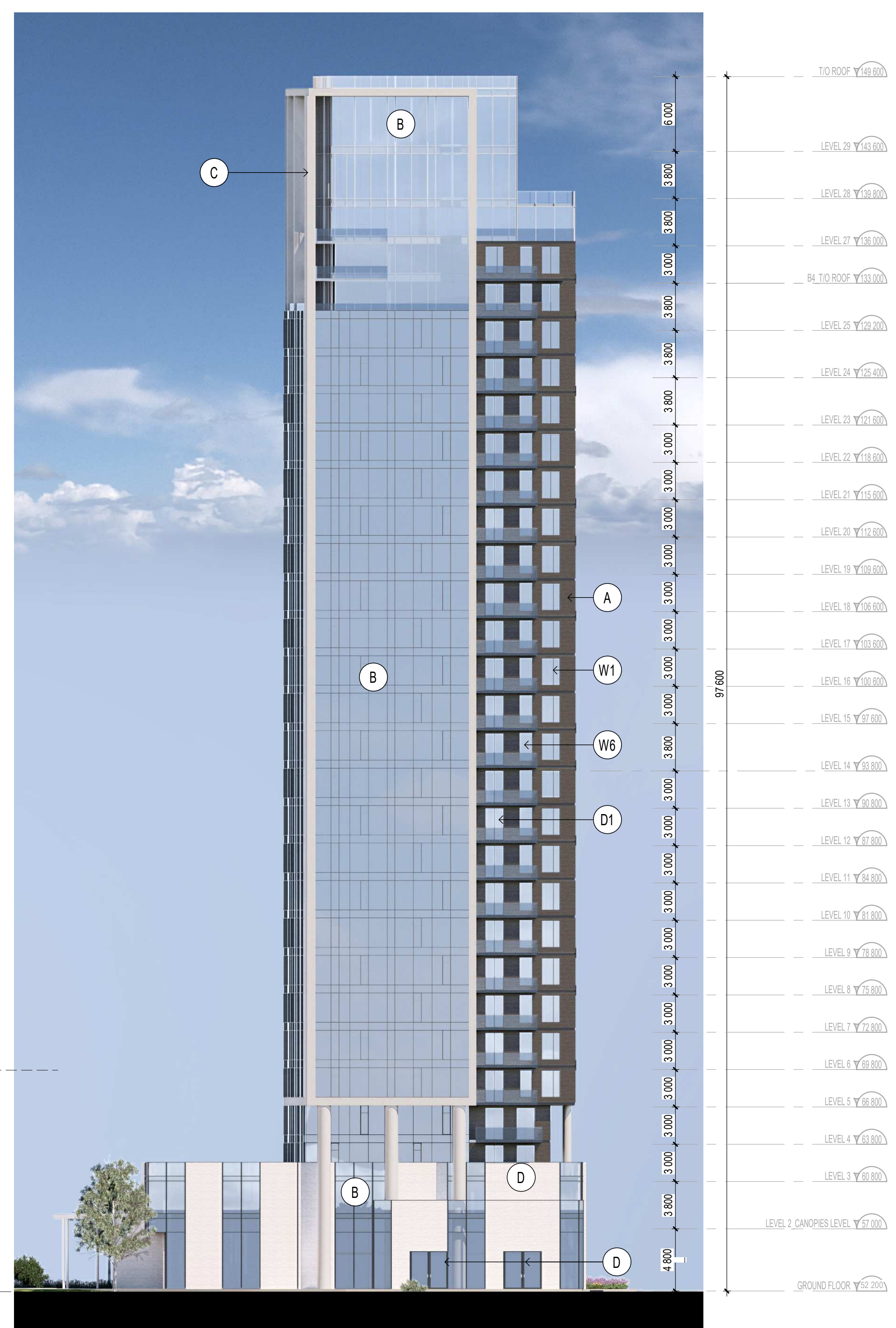
CIVIL / Civil
EXP
1001 Boulevard De Maisonneuve Ouest, Bureau 800, Montreal QC H3A 3C2
T 514 931 1080 Exp.com

ARCHITECTES / Architect
NEUF architect(e)s SENCRL
630, St-Jacques, Montréal, Québec H3B 1S6
T 514 847 1117 NEUFarchitectes.com

SCEAU / Seal



SOUTH ELEVATION_B1
1:250



NORTH ELEVATION_B1
1:250

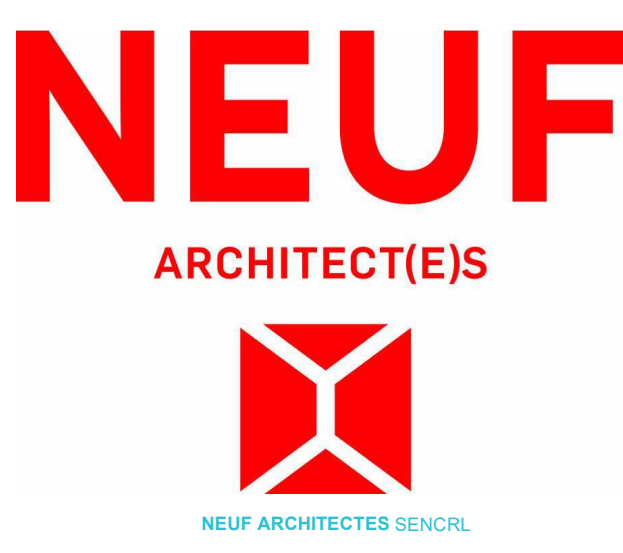
NOTES
FILE NUMBER D02-02-25-0038 & D07-12-25-0073
PLAN NUMBER # 19417

ARCHITECTES / Architect
NEUF architect(e)s SENCRL
630, St-Jacques, Montréal, Québec H3B 1S6
T 514 847 1117 NEUFarchitectes.com

SCEAU / Seal

CIVIL / Civil
EXP
1001 Boulevard De Maisonneuve Ouest, Bureau 800, Montreal QC H3A 3C2
T 514 931 1080 Exp.com

ARCHITECTES / Architect
NEUF architect(e)s SENCRL
630, St-Jacques, Montréal, Québec H3B 1S6
T 514 847 1117 NEUFarchitectes.com



CLIENT / Client

OUVRAGE / Project
**1015 TWEDDLE ROAD,
ORLÉANS, ON, K4A 3P4**

EMPLACEMENT / Location
OTTAWA, ON

NO PROJET / No.
13383

NO	RÉVISION	DATE (aa-mm-jj)
0	SPA SUBMISSION	2025.05.30
1	SPA RESUBMISSION	2025.09.26
2	SPA RESUBMISSION	2025.11.22

DESSINÉ PAR / Drawn by
AT

VERIFIÉ PAR / Checked by
AC

DATE (aa.mm.jj)
30/05/25

ECHELLE / Scale
As indicated

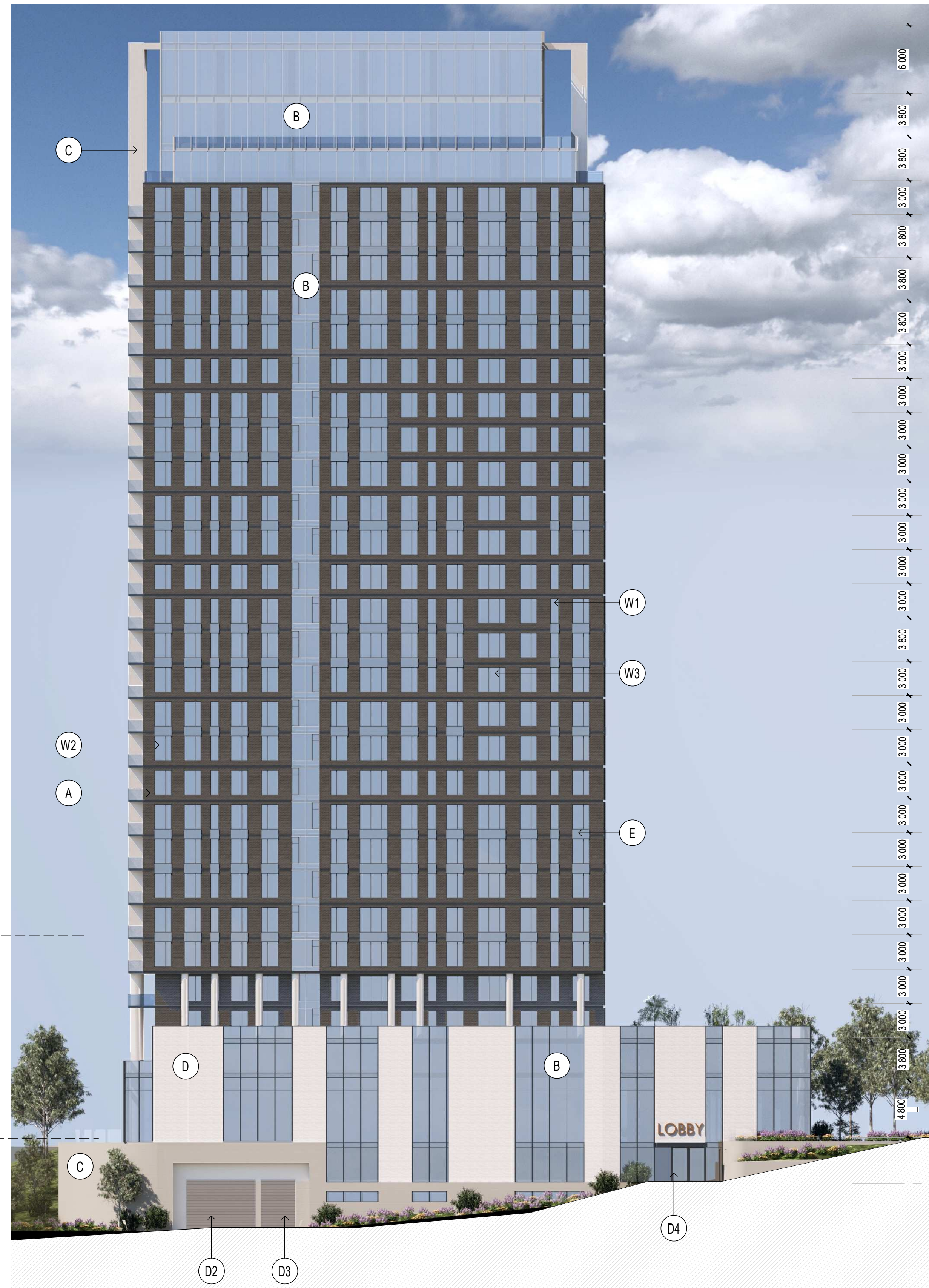
ELEVATIONS - B1

Autodesk Docs://13383_1015 TWEDDLE RD_R24/TRIM_13383_ARC_PRE_A23_IMPLANTATION_R24.rvt



EAST ELEVATION_B1
1: 250

2
002



WEST ELEVATION_B1
1: 250

1
002

MATERIAL LEGEND			
(A) BRICK Manufacturer: TBT Color: TBD	(E) SPANDREL PANEL Manufacturer: TBT Color: TBD	(W4) WINDOW Manufacturer: TBD	(D4) LOBBY / COMM. ENTRANCE DOOR Manufacturer: TBD Color: Clear Glass
(B) CURTAIN WALL Manufacturer: TBD Color: Clear Glass	(W1) WINDOW Manufacturer: TBT	(D1) PATIO DOOR Manufacturer: TBD	(D5) EXIT DOOR Manufacturer: TBD Color: TBD
(C) CONCRETE Manufacturer: TBD Color: TBD	(W2) WINDOW Manufacturer: TBD	(D2) GARAGE DOOR Manufacturer: TBD 4.6m H x 6.3m W	
(D) BRICK Manufacturer: TBD Color: TBD	(W3) WINDOW Manufacturer: TBD	(D3) GARAGE DOOR Manufacturer: TBD 4.6m H x 3m W	

NOTE: Bird-safe glazing treatment provided on all exterior glazing within the first 16m above grade and adjacent to significant landscape features, in accordance with CSA A460:19 and City of Ottawa High-Rise Design Guidelines.

NOTES GÉNÉRALES General Notes

- Ces documents d'architecture sont la propriété exclusive de NEUF architect(e)s et ne peuvent être utilisés, reproduits ou copiés sans autorisation écrite préalable. / These architectural documents are the exclusive property of NEUF architect(e)s and cannot be used, copied or reproduced without written pre-authorization.
- Les dimensions apparaissant aux documents doivent être vérifiées par l'entrepreneur avant le début des travaux. / All dimensions which appear on the documents must be verified by the contractor before to start the work.
- Veuillez aviser l'architecte de toute dimension erreur et/ou divergences entre ces documents et ceux des autres professionnels. / The architect must be notified of all errors, omissions and discrepancies between these documents and those of the others professionals.
- Les dimensions sur ces documents doivent être lues et non mesurées. / The dimensions on these documents must be read and not measured.

ARPEUTEUR Surveyor
Annis, O'Sullivan, Vollebek Ltd.
14 Concourse Gate, Ottawa ON K2E 7S6
T 613 727 0850 Aovltd.com

PROMOTEUR Developer
Vuze Construction
Laperrière Ave 1600, Ottawa ON K1Z 6P5
T 619 664 4195 Vuzeconstruction.com

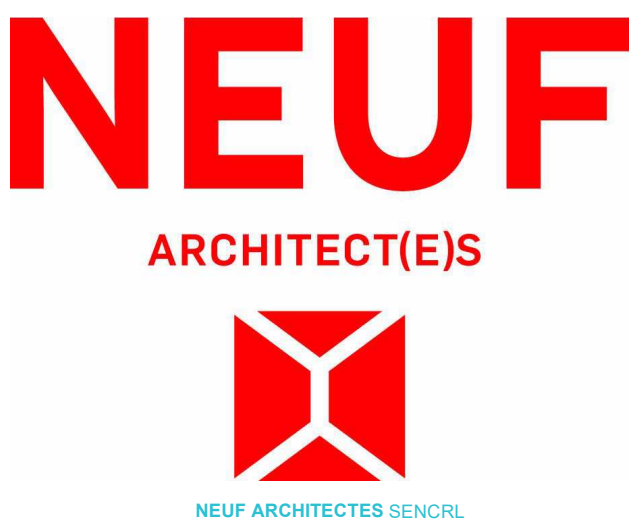
PLANIFICATEUR Planner
Fotenn Planning and Design
420 O'Connor Street, Ottawa ON K2P 0P4
T 613 730 5709 Fotenn.com

ARCHITECTURE DE PAYSAGE Landscape Architect
Projet Paysage
24 Montroyal West Suite 204, Montreal QC H2T 2S2
T 514 849 7700 Projetpaysage.com

CIVIL Civil
EXP
1001 Boulevard De Maisonneuve Ouest, Bureau 800, Montreal QC H3A 3C2
T 514 931 1080 Exp.com

ARCHITECTES Architect
NEUF architect(e)s SENCRL
630, St-J. René-Lévesque O. 32e étage, Montreal QC H3B 1S6
T 514 847 1117 NEUFarchitectes.com

SCEAU / Seal



CLIENT Client

OUVRAGE Project
**1015 TWEDDLE ROAD,
ORLÉANS, ON, K4A 3P4**

EMPLACEMENT Location NO PROJET No.
OTTAWA, ON 13383

NO	RÉVISION	DATE (aa-mm-jj)
0	SPA SUBMISSION	2025.05.30
1	SPA RESUBMISSION	2025.09.26
2	SPA RESUBMISSION	2025.11.22

DESSINÉ PAR Drawn by
AT

VERIFIÉ PAR Checked by
AC

DATE (aa.mm.jj)
30/05/25

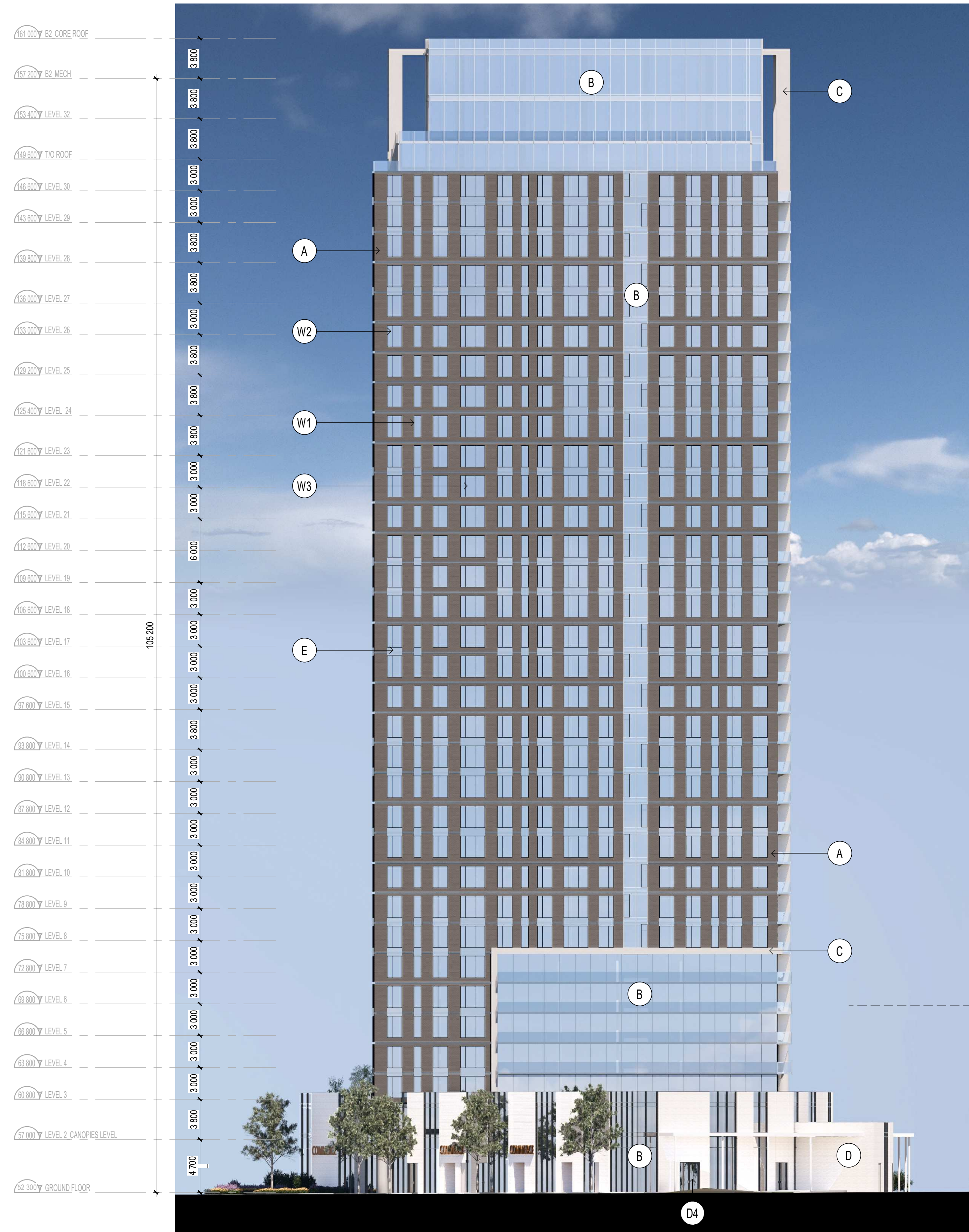
ECHELLE Scale
As indicated

TITRE DU DESSIN Drawing Title

ELEVATIONS - B1

RÉVISION Revision NO. DESSIN Dwg Number
2 **002**

NOTES
FILE NUMBER D02-02-25-0038 & D07-12-25-0073
PLAN NUMBER # 19417



EAST ELEVATION_B2

1:250

2
003



WEST ELEVATION_B2

1:250

1
003

MATERIAL LEGEND			
A BRICK Manufacturer: TBT Color: TBD	E SPANDREL PANEL Manufacturer: TBT Color: TBD	W4 WINDOW Manufacturer: TBD	D4 LOBBY / COMM ENTRANCE DOOR Manufacturer: TBD Color: Clear Glass
B CURTAIN WALL Manufacturer: TBD Color: Clear Glass	W1 WINDOW Manufacturer: TBT	D1 PATIO DOOR Manufacturer: TBD	D5 EXIT DOOR Manufacturer: TBD Color: TBD
C CONCRETE Manufacturer: TBD Color: TBD	W2 WINDOW Manufacturer: TBD	D2 GARAGE DOOR Manufacturer: TBD 4.6m H x 6.3m W	
D BRICK Manufacturer: TBD Color: TBD	W3 WINDOW Manufacturer: TBD	D3 GARAGE DOOR Manufacturer: TBD 4.6m H x 3m W	

NOTE: Bird-safe glazing treatment provided on all exterior glazing within the first 16m above grade and adjacent to significant landscape features, in accordance with CSA A460.19 and City of Ottawa High-Rise Design Guidelines.

NOTES

FILE NUMBER D02-02-25-0038 & D07-12-25-0073
PLAN NUMBER # 19417

NOTES GÉNÉRALES General Notes

- Ces documents d'architecture sont la propriété exclusive de NEUF architect(e)s et ne peuvent être utilisés, reproduits ou copiés sans autorisation écrite préalable. / These architectural documents are the exclusive property of NEUF architect(e)s and cannot be used, copied or reproduced without written pre-authorization.
- Les dimensions apparaissant aux documents doivent être vérifiées par l'entrepreneur avant le début des travaux. / All dimensions which appear on the documents must be verified by the contractor before to start the work.
- Veuillez aviser l'architecte de toute dimension erreur et/ou divergences entre ces documents et ceux des autres professionnels. / The architect must be notified of all errors, omissions and discrepancies between these documents and those of the others professionals.
- Les dimensions sur ces documents doivent être lues et non mesurées. / The dimensions on these documents must be read and not measured.

ARPENTEUR Surveyor
Annis, O'Sullivan, Vollebek Ltd.
14 Concourse Gate, Ottawa ON K2E 7S6
T 613 727 0850 Avovld.com

PROMOTEUR Developer
Vuze Construction
Laperrière Ave 1600, Ottawa ON K1Z 6P5
T 619 664 4195 Vuzeconstruction.com

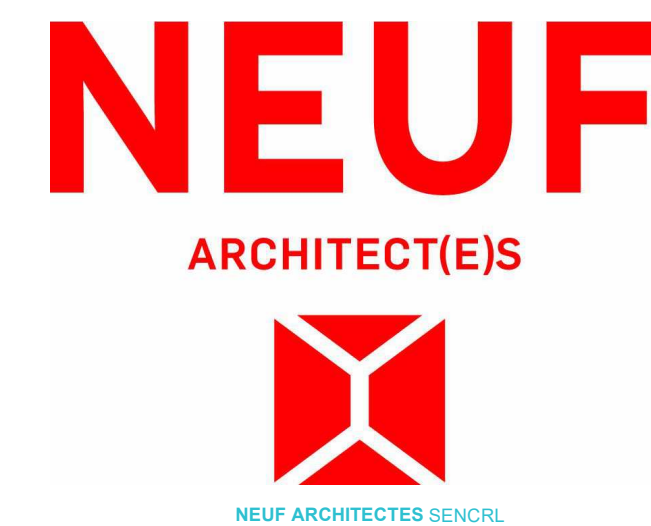
PLANIFICATEUR Planner
Fotenn Planning and Design
420 O'Connor Street, Ottawa ON K2P 0P4
T 613 730 5709 Fotenn.com

ARCHITECTURE DE PAYSAGE Landscape Architect
Projet Paysage
24 Montroyal West Suite 201, Montreal QC H2T 2S2
T 514 849 7700 Projetpaysage.com

CIVIL Civil
EXP
1001 Boulevard De Maisonneuve Ouest, Bureau 800, Montreal QC H3A 3C2
T 514 931 1080 Exp.com

ARCHITECTES Architect
NEUF architect(e)s SENCRIL
630, boul. René-Lévesque O. 30e étage, Montreal QC H3B 1S6
T 514 847 1117 NEUFArchitectes.com

SCEAU / Seal



CLIENT Client

OUVRAGE Project
**1015 TWEDDLE ROAD,
ORLÉANS, ON, K4A 3P4**

EMPLACEMENT Location NO PROJET No.
OTTAWA, ON 13383

NO	RÉVISION	DATE (aa-mm-jj)
0	SPA SUBMISSION	2025.05.30
1	SPA RESUBMISSION	2025.09.26
2	SPA RESUBMISSION	2025.11.22

DESSINÉ PAR Drawn by
AT

VERIFIÉ PAR Checked by
AC

DATE (aa.mm.jj)
30/05/25

ECHELLE Scale
As indicated

TITRE DU DESSIN Drawing Title

ELEVATIONS - B2

REVISION Revision NO. DESSIN Dwg Number
2 **003**

Autodesk Docs://13383_1015 TWEDDLE RD_R24/TRIM_13383_ARC_PRE_A23_IMPLANTATION_R24.rvt



NORTH ELEVATION_B2
1:250



SOUTH ELEVATION_B2
1:250

MATERIAL LEGEND			
A	BRICK Manufacturer: TBT Color: TBD	E	SPANDREL PANEL Manufacturer: TBT Color: TBD
B	CURTAIN WALL Manufacturer: TBD Color: Clear Glass	W1	WINDOW Manufacturer: TBT
C	CONCRETE Manufacturer: TBD Color: TBD	W2	WINDOW Manufacturer: TBD
D	BRICK Manufacturer: TBD Color: TBD	W3	WINDOW Manufacturer: TBD
		W4	WINDOW Manufacturer: TBD
		D1	PATIO DOOR Manufacturer: TBD
		D2	GARAGE DOOR Manufacturer: TBD 4.6m H x 6.3m W
		D3	GARAGE DOOR Manufacturer: TBD 4.6m H x 3m W
		D4	LOBBY / COMM ENTRANCE DOOR Manufacturer: TBD Color: Clear Glass
		D5	EXIT DOOR Manufacturer: TBD Color: TBD

NOTE: Bird-safe glazing treatment provided on all exterior glazing within the first 16m above grade and adjacent to significant landscape features, in accordance with CSA A460:19 and City of Ottawa High-Rise Design Guidelines.

NOTES GÉNÉRALES / General Notes

- Ces documents d'architecture sont la propriété exclusive de NEUF architect(e)s et ne peuvent être utilisés, reproduits ou copiés sans autorisation écrite préalable. / These architectural documents are the exclusive property of NEUF architect(e)s and cannot be used, copied or reproduced without written pre-authorization.
- Les dimensions apparaissant aux documents doivent être vérifiées par l'entrepreneur avant le début des travaux. / All dimensions which appear on the documents must be verified by the contractor before to start the work.
- Veuillez aviser l'architecte de toute dimension erreur et/ou divergences entre ces documents et ceux des autres professionnels. / The architect must be notified of all errors, omissions and discrepancies between these documents and those of the others professionals.
- Les dimensions sur ces documents doivent être lues et non mesurées. / The dimensions on these documents must be read and not measured.

ARPENITEUR / Surveyor
Annis, O'Sullivan, Vollebek Ltd.
14 Concourse Gate, Ottawa ON K2E 7S6
T 613 727 0850 Aovltd.com

PROMOTEUR / Developer
Vuze Construction
Laperrière Ave 1600, Ottawa ON K1Z 6P5
T 619 664 4195 Vuzeconstruction.com

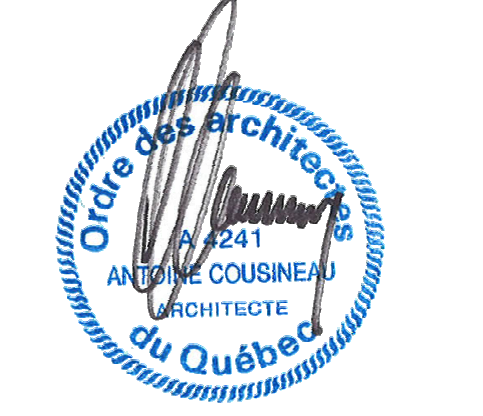
PLANIFICATEUR / Planner
Fotenn Planning and Design
420 O'Connor Street, Ottawa ON K2P 0P4
T 613 730 5709 Fotenn.com

ARCHITECTURE DE PAYSAGE / Landscape Architect
Projet Paysage
24 Montroyal West Side St., Montreal QC H2T 2S2
T 514 849 7700 Projetspaysage.com

CIVIL / Civil
EXP
1001 Boulevard De Maisonneuve Ouest, Bureau 800, Montreal QC H3A 3G2
T 514 931 1080 Exp.com

ARCHITECTES / Architect
NEUF architect(e)s SENCRL
630, boul. René-Lévesque O. 32e étage, Montréal QC H3B 1S6
T 514 847 1117 NEUFarchitectes.com

SCEAU / Seal



CLIENT / Client

OUVRAGE / Project
**1015 TWEDDLE ROAD,
ORLÉANS, ON, K4A 3P4**

EMPLACEMENT / Location
OTTAWA, ON

NO PROJET / No.
13383

NO	RÉVISION	DATE (aa-mm-jj)
0	SPA SUBMISSION	2025.05.30
1	SPA RESUBMISSION	2025.09.26
2	SPA RESUBMISSION	2025.11.22

DESSINÉ PAR / Drawn by
AT

VERIFIÉ PAR / Checked by
AC

DATE (aa.mm.jj)
30/05/25

ECHELLE / Scale
As indicated

TITRE DU DESSIN / Drawing Title

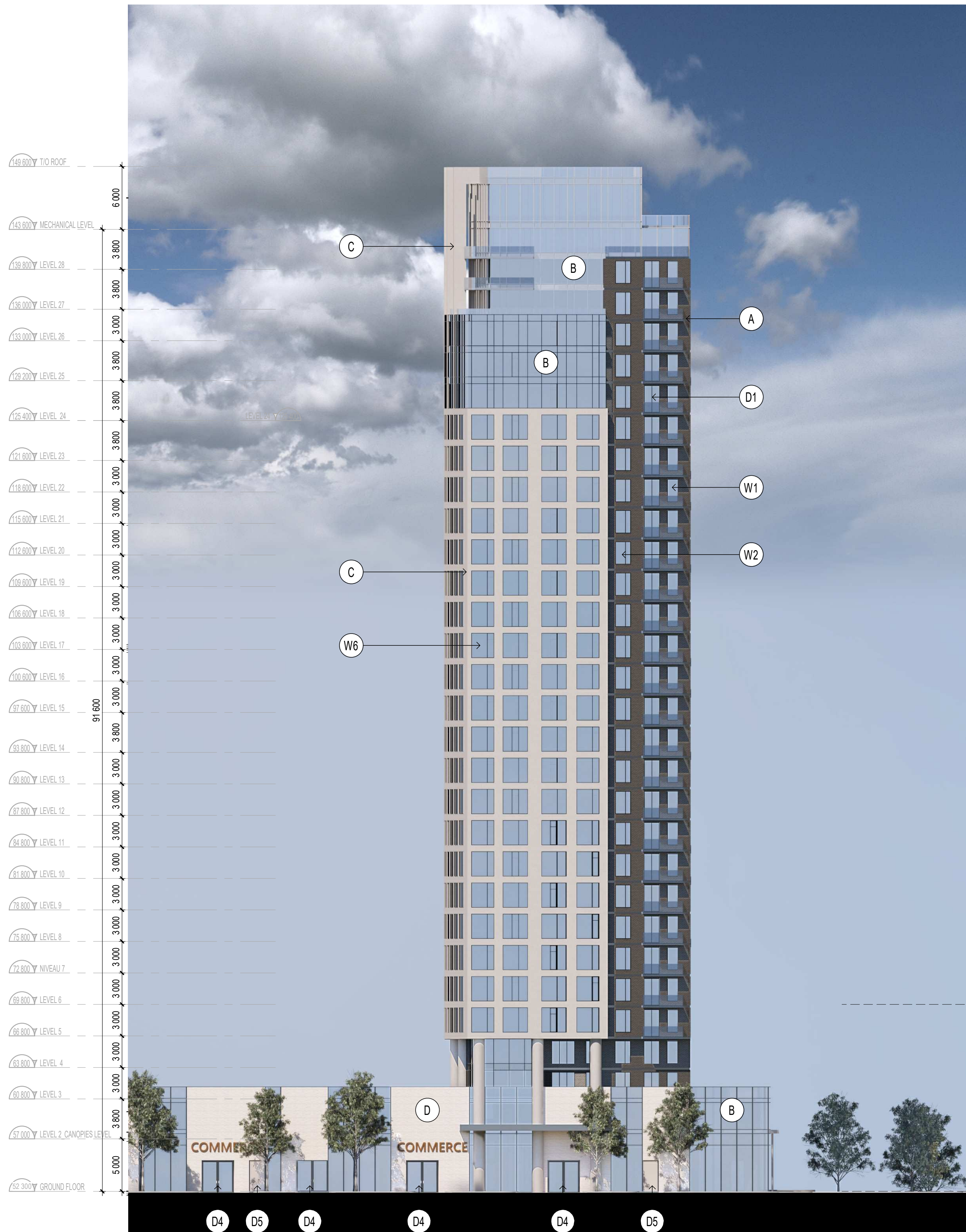
ELEVATIONS - B2

RÉVISION / Revision
2

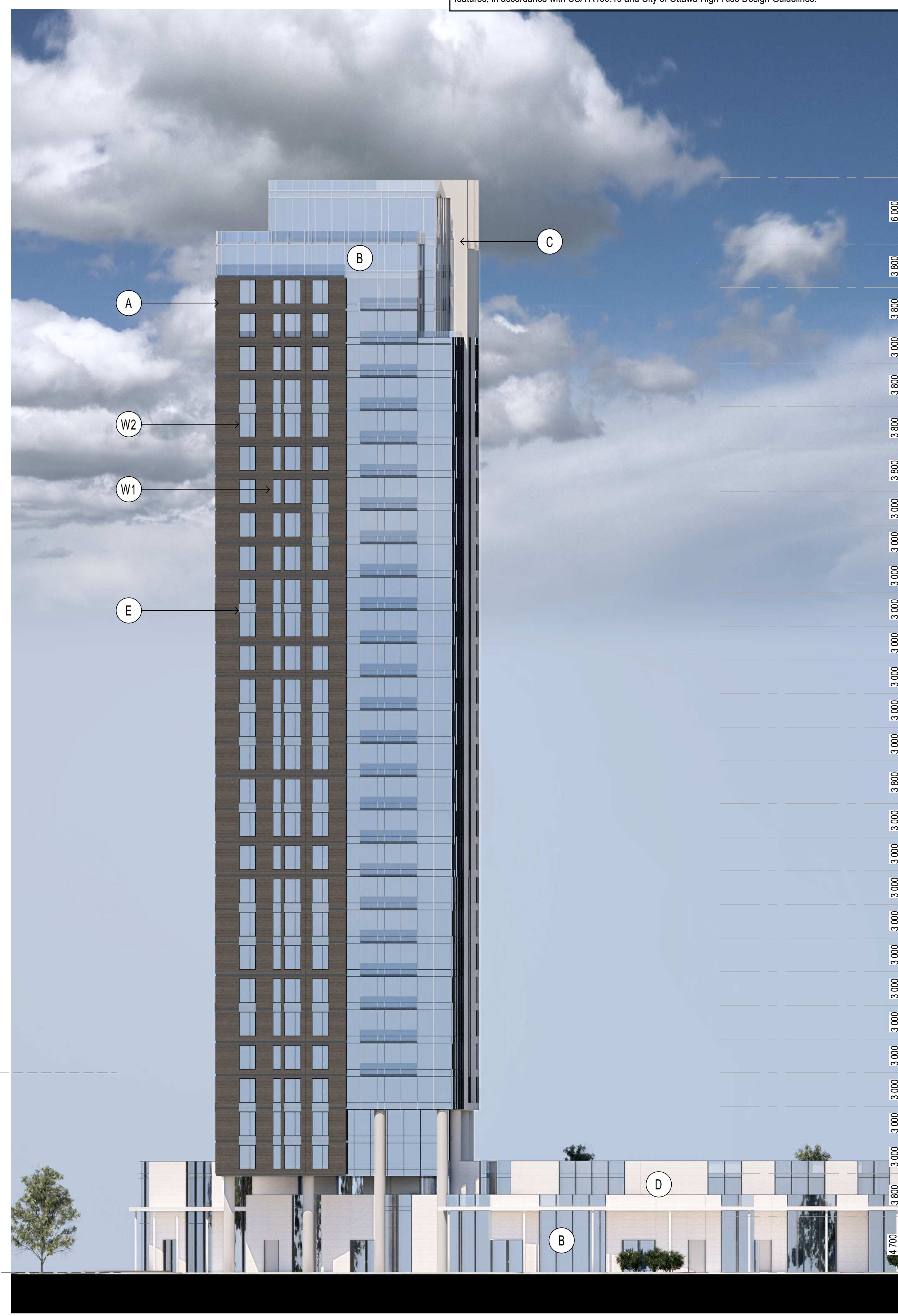
NO. DESSIN / Dwg Number
004

NOTES
FILE NUMBER D02-02-25-0038 & D07-12-25-0073
PLAN NUMBER # 19417

Autodesk Docs://13383_1015 TWEDDLE RD_R24/TRIM_13383_ARC_PRE_A23_IMPLANTATION_R24.rvt



NORTH ELEVATION_B3
1:250



SOUTH ELEVATION_B3
1:250

MATERIAL LEGEND			
A BRICK Manufacturer: TBT Color: TBD	E SPANDREL PANEL Manufacturer: TBT Color: TBD	W4 WINDOW Manufacturer: TBD	D4 LOBBY / COMM ENTRANCE DOOR Manufacturer: TBD Color: Clear Glass
B CURTAIN WALL Manufacturer: TBD Color: Clear Glass	W1 WINDOW Manufacturer: TBT	D1 PATIO DOOR Manufacturer: TBD	D5 EXIT DOOR Manufacturer: TBD Color: TBD
C CONCRETE Manufacturer: TBD Color: TBD	W2 WINDOW Manufacturer: TBD	D2 GARAGE DOOR Manufacturer: TBD 4.6m H x 6.3m W	
D BRICK Manufacturer: TBD Color: TBD	W3 WINDOW Manufacturer: TBD	D3 GARAGE DOOR Manufacturer: TBD 4.6m H x 3m W	

NOTE: Bird-safe glazing treatment provided on all exterior glazing within the first 16m above grade and adjacent to significant landscape features, in accordance with CSA A460:19 and City of Ottawa High-Rise Design Guidelines.

NOTES GÉNÉRALES / General Notes

- Ces documents d'architecture sont la propriété exclusive de NEUF architecte et ne peuvent être utilisés, reproduits ou copiés sans autorisation écrite préalable. / These architectural documents are the exclusive property of NEUF architecte and cannot be used, copied or reproduced without written pre-authorization.
- Les dimensions apparaissant aux documents doivent être vérifiées par l'entrepreneur avant le début des travaux. / All dimensions which appear on the documents must be verified by the contractor before to start the work.
- Veuillez aviser l'architecte de toute dimension erreur et/ou divergences entre ces documents et ceux des autres professionnels. / The architect must be notified of all errors, omissions and discrepancies between these documents and those of the others professionals.
- Les dimensions sur ces documents doivent être lues et non mesurées. / The dimensions on these documents must be read and not measured.

ARPENITEUR / Surveyor
Annis, O'Sullivan, Vollebakk Ltd.
14 Concourse Gate, Ottawa ON K2E 7S6
T 613 727 0850 Aovltd.com

PROMOTEUR / Developer
Vuze Construction
Laperrière Ave 1600, Ottawa ON K1Z 6P5
T 619 664 4195 Vuzeconstruction.com

PLANIFICATEUR / Planner
Fotenn Planning and Design
420 O'Connor Street, Ottawa ON K2P 0P4
T 613 730 5709 Fotenn.com

ARCHITECTURE DE PAYSAGE / Landscape Architect
Projet Paysage
25 Montroyal West Side St., Montreal QC H2T 2S2
T 514 849 7700 Projeppaysage.com

CIVIL / Civil
EXP
1001 Boulevard De Maisonneuve Ouest, Bureau 800, Montreal QC H3A 3C2
T 514 931 1080 Exp.com

ARCHITECTES / Architect
NEUF architect(e)s SENCR
630, boul. René-Lévesque O, 32e étage, Montréal QC H3B 1S6
T 514 847 1117 NEUFarchitectes.com



CLIENT / Client

OUVRAGE / Project
**1015 TWEDDLE ROAD,
ORLÉANS, ON, K4A 3P4**

EMPLACEMENT / Location
OTTAWA, ON **NO PROJET No. 13383**

NO	RÉVISION	DATE (aa-mm-jj)
0	SPA SUBMISSION	2025.05.30
1	SPA RESUBMISSION	2025.09.26
2	SPA RESUBMISSION	2025.11.22

DESSINÉ PAR / Drawn by
AT

VERIFIÉ PAR / Checked by
AC

DATE (aa.mm.jj)
30/05/25

ECHELLE / Scale
As indicated

ELEVATIONS - B3

RÉVISION / Revision **NO. DESSIN / Dwg Number**
2 **005**

Autodesk Docs://13383_1015 TWEDDLE RD_R24/TRIM_13383_ARC_PRE_A23_IMPLANTATION_R24.rvt



EAST ELEVATION_B3
1:250

2
006



WEST ELEVATION_B3
1:250

1
006

MATERIAL LEGEND			
A BRICK Manufacturer: TBT Color: TBD	E SPANDREL PANEL Manufacturer: TBT Color: TBD	W4 WINDOW Manufacturer: TBD	D4 LOBBY / COMM ENTRANCE DOOR Manufacturer: TBD Color: Clear Glass
B CURTAIN WALL Manufacturer: TBD Color: Clear Glass	W1 WINDOW Manufacturer: TBT	D1 PATIO DOOR Manufacturer: TBD	D5 EXIT DOOR Manufacturer: TBD Color: TBD
C CONCRETE Manufacturer: TBD Color: TBD	W2 WINDOW Manufacturer: TBD	D2 GARAGE DOOR Manufacturer: TBD 4.6m H x 6.3m W	
D BRICK Manufacturer: TBD Color: TBD	W3 WINDOW Manufacturer: TBD	D3 GARAGE DOOR Manufacturer: TBD 4.6m H x 3m W	

NOTE: Bird-safe glazing treatment provided on all exterior glazing within the first 16m above grade and adjacent to significant landscape features, in accordance with CSA A460:19 and City of Ottawa High-Rise Design Guidelines.

NOTES
FILE NUMBER D02-02-25-0038 & D07-12-25-0073
PLAN NUMBER # 19417

NOTES GÉNÉRALES General Notes

- Ces documents d'architecture sont la propriété exclusive de NEUF architecte et ne peuvent être utilisés, reproduits ou copiés sans autorisation écrite préalable. / These architectural documents are the exclusive property of NEUF architecte and cannot be used, copied or reproduced without written pre-authorization.
- Les dimensions apparaissant aux documents doivent être vérifiées par l'entrepreneur avant le début des travaux. / All dimensions which appear on the documents must be verified by the contractor before to start the work.
- Veuillez aviser l'architecte de toute dimension erreur et/ou divergences entre ces documents et ceux des autres professionnels. / The architect must be notified of all errors, omissions and discrepancies between these documents and those of the others professionals.
- Les dimensions sur ces documents doivent être lues et non mesurées. / The dimensions on these documents must be read and not measured.

ARPEUTEUR Surveyor
Annis, O'Sullivan, Vollebek Ltd.
14 Concourse Gate, Ottawa ON K2E 7S6
T 613 727 0850 Aovltd.com

PROMOTEUR Developer
Vuze Construction
Laperrière Ave 1600, Ottawa ON K1Z 6P5
T 619 664 4195 Vuzeconstruction.com

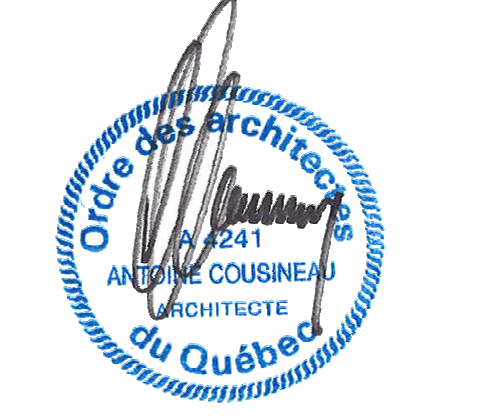
PLANIFICATEUR Planner
Fotenn Planning and Design
420 O'Connor Street, Ottawa ON K2P 0P4
T 613 730 5709 Fotenn.com

ARCHITECTURE DE PAYSAGE Landscape Architect
Projet Paysage
24 Metcalf West Side St., Montreal QC H2T 2S2
T 514 849 7700 Projetspaysage.com

CIVIL Civil
EXP
1001 Boulevard De Maisonneuve Ouest, Bureau 800, Montreal QC H3A 3C2
T 514 931 1080 Exp.com

ARCHITECTES Architect
NEUF architect(e)s SENCRL
630, St-Jacques, Rensselaire C. 32e étage, Montreal QC H3B 1S6
T 514 847 1117 NEUFarchitectes.com

SCEAU / Seal



CLIENT Client

OUVRAGE Project
**1015 TWEDDLE ROAD,
ORLÉANS, ON, K4A 3P4**

EMPLACEMENT Location NO PROJET No.
OTTAWA, ON 13383

NO	RÉVISION	DATE (aa-mm-jj)
0	SPA SUBMISSION	2025.05.30
1	SPA SUBMISSION	2025.09.26
2	SPA SUBMISSION	2025.11.22

DESSINÉ PAR Drawn by
AT

VERIFIÉ PAR Checked by
AC

DATE (aa-mm-jj)
30/05/25

ECHELLE Scale
As indicated

TITRE DU DESSIN Drawing Title

ELEVATIONS - B3

RÉVISION Revision NO. DESSIN Dwg Number
2 006

MATERIAL LEGEND			
A BRICK Manufacturer: TBT Color: TBD	E SPANDREL PANEL Manufacturer: TBT Color: TBD	W4 WINDOW Manufacturer: TBD	D4 LOBBY / COMM ENTRANCE DOOR Manufacturer: TBD Color: Clear Glass
B CURTAIN WALL Manufacturer: TBD Color: Clear Glass	W1 WINDOW Manufacturer: TBT	D1 PATIO DOOR Manufacturer: TBD	D5 EXIT DOOR Manufacturer: TBD Color: TBD
C CONCRETE Manufacturer: TBD Color: TBD	W2 WINDOW Manufacturer: TBD	D2 GARAGE DOOR Manufacturer: TBD 4.6 m H x 6.3 m W	
D BRICK Manufacturer: TBD Color: TBD	W3 WINDOW Manufacturer: TBD	D3 GARAGE DOOR Manufacturer: TBD 4.6 m H x 3 m W	

NOTE: Bird-safe glazing treatment provided on all exterior glazing within the first 16m above grade and adjacent to significant landscape features, in accordance with CSA A460.19 and City of Ottawa High-Rise Design Guidelines.

NOTES GÉNÉRALES / General Notes

- Ces documents d'architecture sont la propriété exclusive de NEUF architect(e)s et ne peuvent être utilisés, reproduits ou copiés sans autorisation écrite préalable. / These architectural documents are the exclusive property of NEUF architect(e)s and cannot be used, copied or reproduced without written pre-authorization.
- Les dimensions apparaissant aux documents doivent être vérifiées par l'entrepreneur avant le début des travaux. / All dimensions which appear on the documents must be verified by the contractor before to start the work.
- Veuillez aviser l'architecte de toute dimension erreur et/ou divergences entre ces documents et ceux des autres professionnels. / The architect must be notified of all errors, omissions and discrepancies between these documents and those of the others professionals.
- Les dimensions sur ces documents doivent être lues et non mesurées. / The dimensions on these documents must be read and not measured.

ARPENTEUR / Surveyor
Annis, O'Sullivan, Vollebek Ltd.
 14 Concourse Gate, Ottawa ON K2E 7S6
 T 613 727 0850 Aovild.com

PROMOTEUR / Developer
Vuze Construction
 Laperrière Ave 1600, Ottawa ON K1Z 8P5
 T 619 664 4195 Vuzeconstruction.com

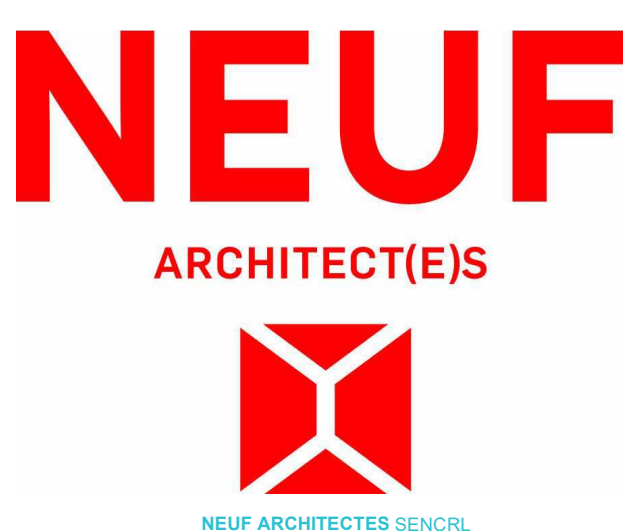
PLANIFICATEUR / Planner
Fotenn Planning and Design
 420 O'Connor Street, Ottawa ON K2P 0P4
 T 613 730 5709 Fotenn.com

ARCHITECTURE DE PAYSAGE / Landscape Architect
Projet Paysage
 24 Montroyal West Suite 204, Montreal QC H2T 2S2
 T 514 849 7700 Projetspaysage.com

CIVIL / Civil
EXP
 1001 Boulevard De Maisonneuve Ouest, Bureau 800, Montreal QC H3A 3C9
 T 514 931 1080 Exp.com

ARCHITECTES / Architect
NEUF architect(e)s SENCRL
 630, boul. René-Lévesque O, 32e étage, Montreal QC H3B 1S6
 T 514 847 1117 NEUFArchitectes.com

SCEAU / Seal



CLIENT / Client

OUVRAGE / Project
1015 TWEDDLE ROAD, ORLÉANS, ON, K4A 3P4
 EMPLACEMENT Location NO PROJET No.
 OTTAWA, ON 13383

NO	RÉVISION	DATE (aa-mm-jj)
0	SPA SUBMISSION	2025.05.30
1	SPA SUBMISSION	2025.09.26
2	SPA SUBMISSION	2025.11.22

DESSINÉ PAR / Drawn by
 AT

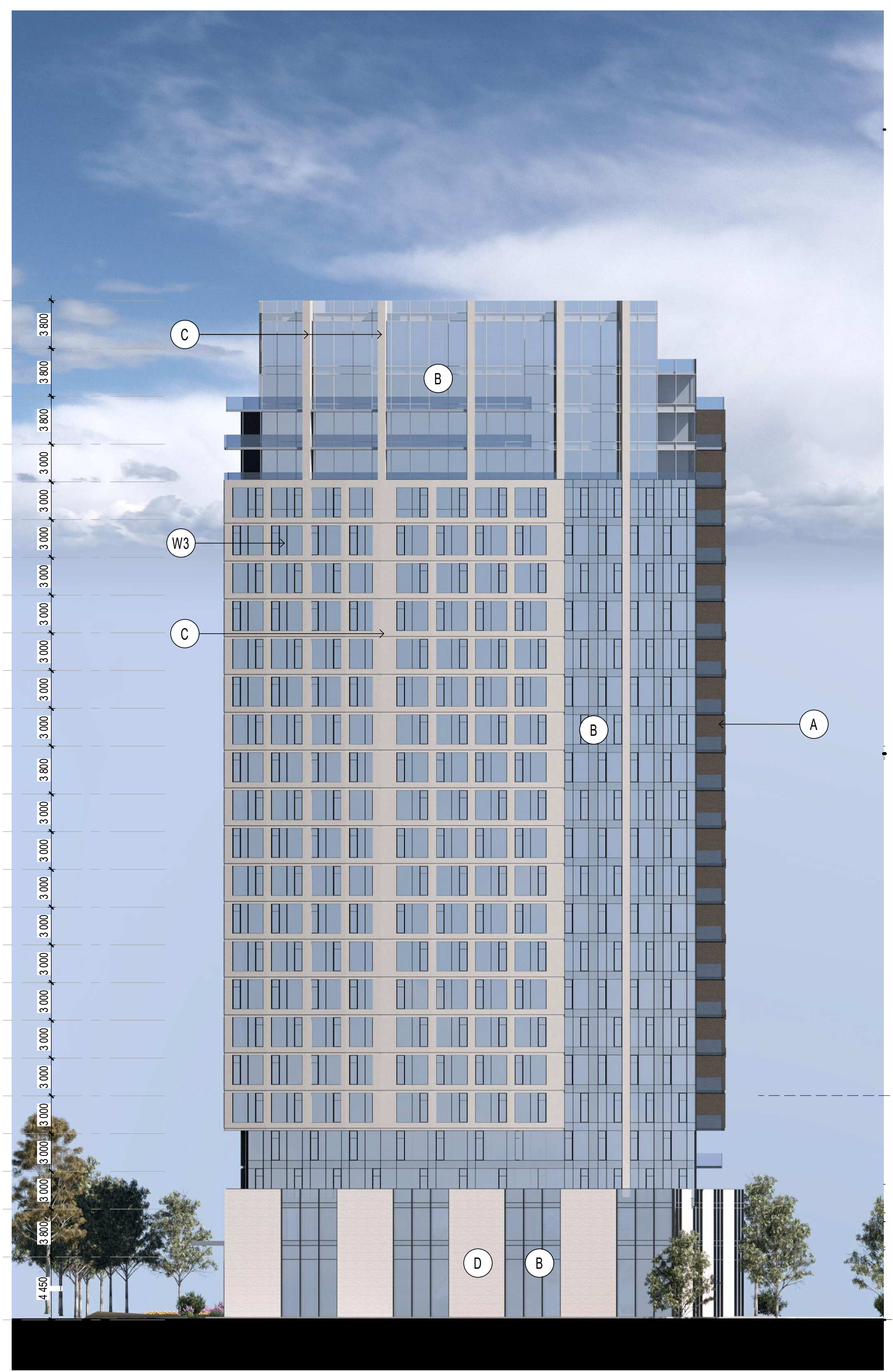
VERIFIÉ PAR / Checked by
 AC

DATE (aa.mm.jj)
 30/05/25

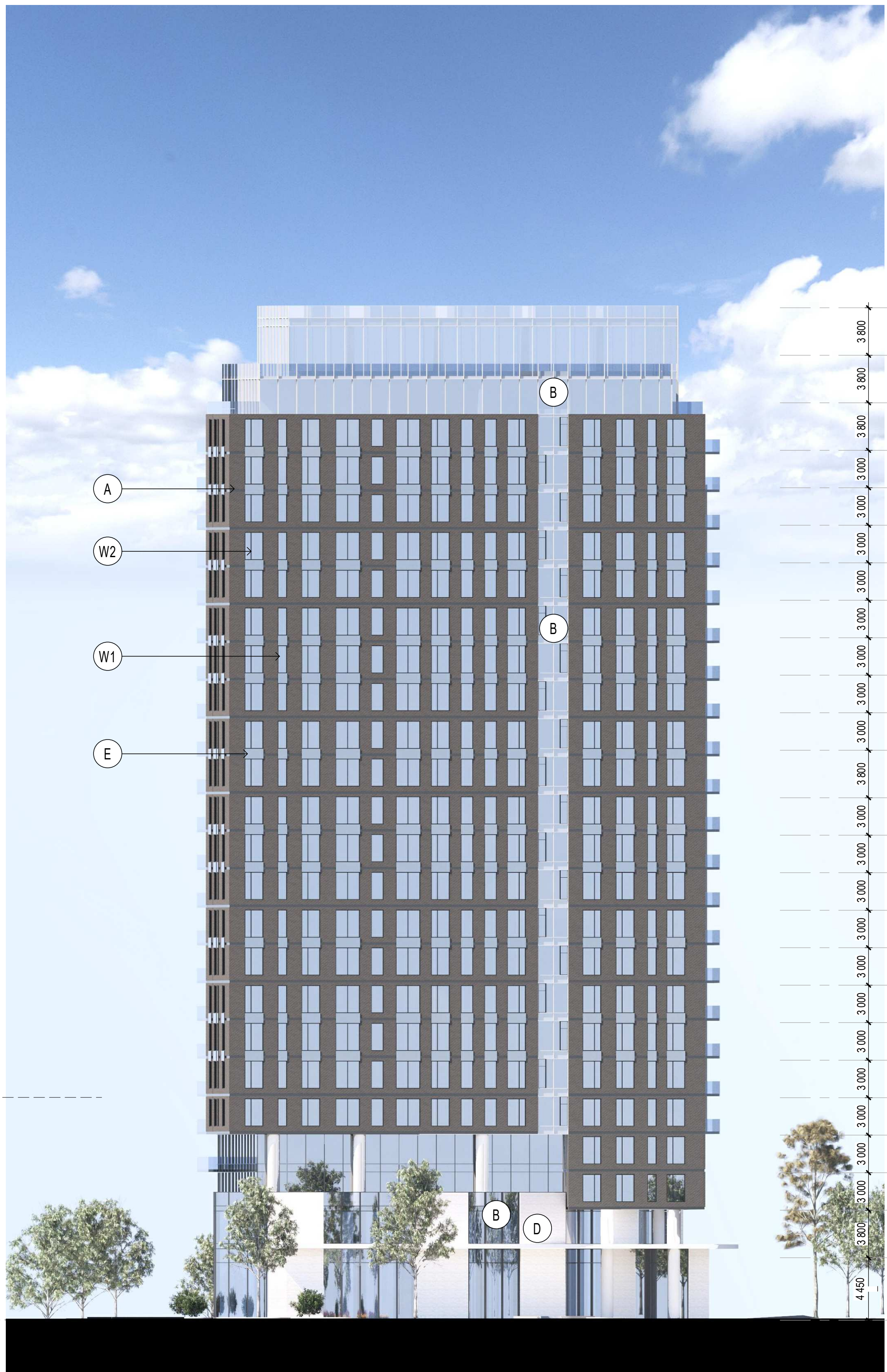
ECHELLE / Scale
 As indicated

ELEVATIONS - B4

REVISION / Revision **NO. DESSIN / Dwg Number**
2 **007**



EAST ELEVATION_B4 2 / 007
 1:250



WEST ELEVATION_B4 1 / 007
 1:250

NOTES
 FILE NUMBER D02-02-25-0038 & D07-12-25-0073
 PLAN NUMBER # 19417

BIRD SAFE TREATMENTS (APPLICABLE TO ALL ELEVATIONS):

a) Reduced Reflectivity at Grade

Highly reflective glass is avoided within the first 16 metres above grade, where the majority of bird collisions occur.

Spandrel panels, fritted glazing, and opaque materials are prioritized at podium levels.

b) Landscape Placement Coordination

Trees and dense plantings are coordinated with façade treatments to avoid creating the illusion of reflected habitat.

Where vegetation is located directly adjacent to glazing, bird-safe glass treatment is specified.

No clear glass corners are located directly adjacent to major tree clusters.

c) Avoidance of Through-Building Views

Ground-floor amenity areas and lobbies are designed to prevent direct "see-through" conditions.

Where transparency is required, glazing includes bird-safe markers.

Podium-Level Bird-Safe Glazing

Since collisions are most frequent within the lower 16 m:

Glazing incorporates visible markers using frit, ceramic patterns, acid-etched, or UV-patterned glass.

Pattern density follows the 2x4 rule (maximum 50mm x 100mm spacing).

Spandrel and solid panels are increased along heavily landscaped frontages.

Glass at corners is treated to eliminate transparent edge conditions.

Guardrails use fritted or opaque laminated glass rather than clear glazing.

MATERIAL LEGEND

A BRICK Manufacturer: TBT Color: TBD	E SPANDREL PANEL Manufacturer: TBT Color: TBD	W4 WINDOW Manufacturer: TBD	D4 LOBBY / COMM ENTRANCE DOOR Manufacturer: TBD Color: Clear Glass
B CURTAIN WALL Manufacturer: TBD Color: Clear Glass	W1 WINDOW Manufacturer: TBT	D1 PATIO DOOR Manufacturer: TBD	D5 EXIT DOOR Manufacturer: TBD Color: TBD
C CONCRETE Manufacturer: TBD Color: TBD	W2 WINDOW Manufacturer: TBD	D2 GARAGE DOOR Manufacturer: TBD 4.6m H x 6.3m W	
D BRICK Manufacturer: TBD Color: TBD	W3 WINDOW Manufacturer: TBD	D3 GARAGE DOOR Manufacturer: TBD 4.6m H x 3m W	

NOTE: Bird-safe glazing treatment provided on all exterior glazing within the first 16m above grade and adjacent to significant landscape features, in accordance with CSA A460.19 and City of Ottawa High-Rise Design Guidelines.



NORTH ELEVATION_B4

1: 250

2 / 008



SOUTH ELEVATION_B4

1: 250

1 / 008

NOTES

FILE NUMBER D02-02-25-0038 & D07-12-25-0073
PLAN NUMBER # 19417

NOTES GÉNÉRALES / General Notes

- Ces documents d'architecture sont la propriété exclusive de NEUF architecte et ne peuvent être utilisés, reproduits ou copiés sans autorisation écrite préalable. / These architectural documents are the exclusive property of NEUF architecte and cannot be used, copied or reproduced without written pre-authorization.
- Les dimensions apparaissant aux documents doivent être vérifiées par l'entrepreneur avant le début des travaux. / All dimensions which appear on the documents must be verified by the contractor before to start the work.
- Veuillez aviser l'architecte de toute dimension eneur et/ou divergences entre ces documents et ceux des autres professionnels. / The architect must be notified of all errors, omissions and discrepancies between these documents and those of the others professionals.
- Les dimensions sur ces documents doivent être lues et non mesurées. / The dimensions on these documents must be read and not measured.

ARPEUTEUR / Surveyor
Annis, O'Sullivan, Vollebakk Ltd.
14 Concourse Gate, Ottawa ON K2E 7S6
T 613 727 0850 Aovltd.com

PROMOTEUR / Developer
Vuze Construction
Laperrière Ave 1600, Ottawa ON K1Z 6P5
T 619 664 4195 Vuzeconstruction.com

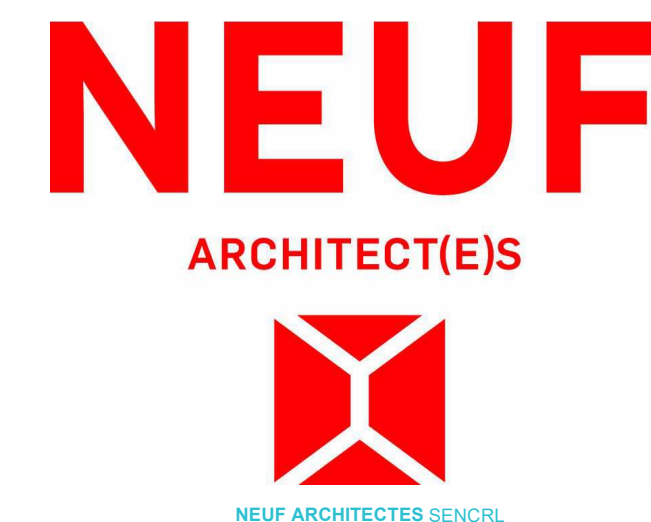
PLANIFICATEUR / Planner
Fotenn Planning and Design
420 O'Connor Street, Ottawa ON K2P 0P4
T 613 730 5709 Fotenn.com

ARCHITECTURE DE PAYSAGE / Landscape Architect
Projet Paysage
24 Montroyal West Suite 201, Montreal QC H2T 2S2
T 514 849 7700 Projetspaysage.com

CIVIL / Civil
EXP
1001 Boulevard De Maisonneuve Ouest, Bureau 800, Montreal QC H3A 3C8
T 514 931 1080 Exp.com

ARCHITECTES / Architect
NEUF architect(e)s SENCLR
630, boul. René-Lévesque O, 30e étage, Montréal QC H3B 1S6
T 514 847 1117 NEUFarchitectes.com

SCEAU / Seal



CLIENT / Client

OUVRAGE / Project
**1015 TWEDDLE ROAD,
ORLÉANS, ON, K4A 3P4**

EMPLACEMENT / Location
OTTAWA, ON
NO PROJET / No.
13383

NO	RÉVISION	DATE (aa-mm-jj)
0	SPA SUBMISSION	2025.05.30
1	SPA RESUBMISSION	2025.09.26
2	SPA RESUBMISSION	2025.11.22

DESSIN PAR / Drawn by
AT
DATE (aa.mm.jj)
30/05/25
TITRE DU DESSIN / Drawing Title
ELEVATIONS - B4

VERIFIÉ PAR / Checked by
AC
ECHELLE / Scale
As indicated

REVISION / Revision
2
NO. DESSIN / Dwg Number
008