

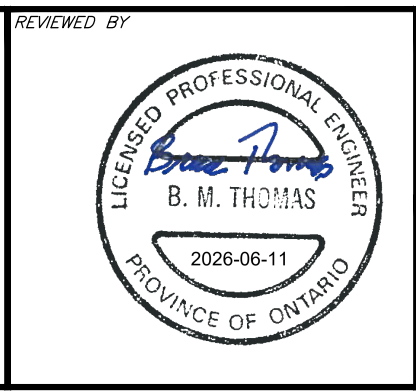
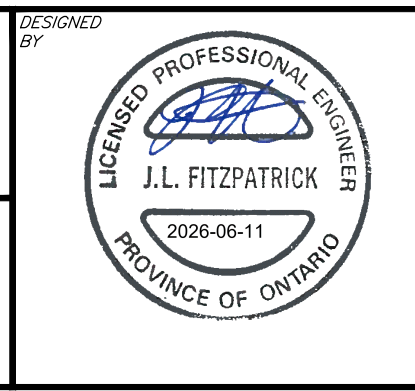
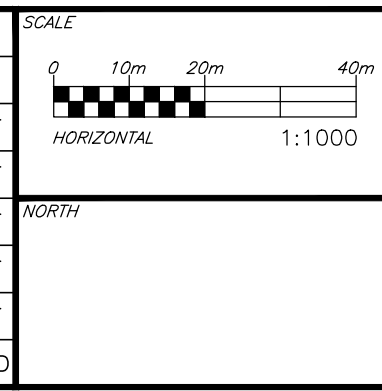
File: \\exp\proj\10259629-AG\10259629-AG.dwg, exp\proj\10259629-AG\10259629-AG.dwg  
 User: jsteele/10/20/2024 5:00:40 PM, Last Plot: 6/11/2024 8:17:54 AM  
 References: \\exp\proj\10259629-AG\ref\10259629-AG.dwg, \\exp\proj\10259629-AG\ref\10259629-AG.dwg

**CAUTION**  
 THE POSITION OF ALL POLE LINES, CONDUITS, WATERMANS, SEWERS AND OTHER UNDERGROUND AND OVERGROUND UTILITIES AND STRUCTURES IS NOT NECESSARILY SHOWN ON THE CONTRACT DRAWINGS, AND WHERE SHOWN, THE ACCURACY OF THE POSITION OF SUCH UTILITIES AND STRUCTURES IS NOT GUARANTEED. BEFORE STARTING WORK, DETERMINE THE EXACT LOCATION OF ALL SUCH UTILITIES AND STRUCTURES AND ASSUME ALL LIABILITY FOR DAMAGE TO THEM.

**JOB BENCH MARK** JBM ▲  
 CITY OF OTTAWA CONTROL MONUMENT 20160007 WITH AN OF ELEVATION=52.51  
 NORTHING=5040095.91 EASTING=384293.97

**TOPOGRAPHIC INFORMATION**  
 PART OF LOT 30, CONCESSION 1 (OLD SURVEY),  
 GEOGRAPHIC TOWNSHIP OF CUMBERLAND, CITY OF OTTAWA,  
 TOPOGRAPHIC INFORMATION PROVIDED BY ANNIS, O'SULLIVAN, VOLLEBEKK LTD. O.L.S  
 (TP3882) SURVEY DATED APRIL 30, 2025. (FINAL AMENDMENT)  
 SITE GRID SYSTEM MTM NAD 83, ZONE 9.

REV	REVISION DESCRIPTION	DATE	BY	APPD
5	REVISED PER CITY COMMENTS	10/06/26	SAB	BMT
4	REVISED PER CITY COMMENTS	16/03/26	SAB	BMT
3	ISSUED FOR APPROVAL	18/11/25	AAS	BMT
2	ISSUED FOR APPROVAL	25/09/25	AAS	BMT
1	ISSUED FOR APPROVAL	30/05/25	SAB	BMT



**TRIM 1 GP INC.**  
 115 CHAMPAGNE AVE SOUTH  
 OTTAWA, ON. K1S 5V5  
 819.664.4195

exp Services Inc.  
 1-813-688-1899 | 1-613-225-7330  
 3025 Queenwood Drive, Unit 100  
 Ottawa, ON K2B 8K6  
 Canada  
 www.exp.com

• BUILDINGS • EARTH & ENVIRONMENT • ENERGY •  
 • INDUSTRIAL • INFRASTRUCTURE • SUSTAINABILITY •

BASE PLAN	SAB
DESIGN	JLF
CHECKED	JLF
CAD	SAB
PROJECT MANAGER	BMT
APPROVED	BMT

**PROJECT**  
 1015 TWEDDLE ROAD  
 DEVELOPMENT  
 1015 TWEDDLE ROAD  
 OTTAWA, ONTARIO.

**TITLE**  
 SANITARY DRAINAGE AREA PLAN

**PROJECT No.**  
 OTT-00259629-AG

**SURVEY**  
 ACV

**DATE**  
 OCT 2024

**DRAWING No.**  
 C500

#19417