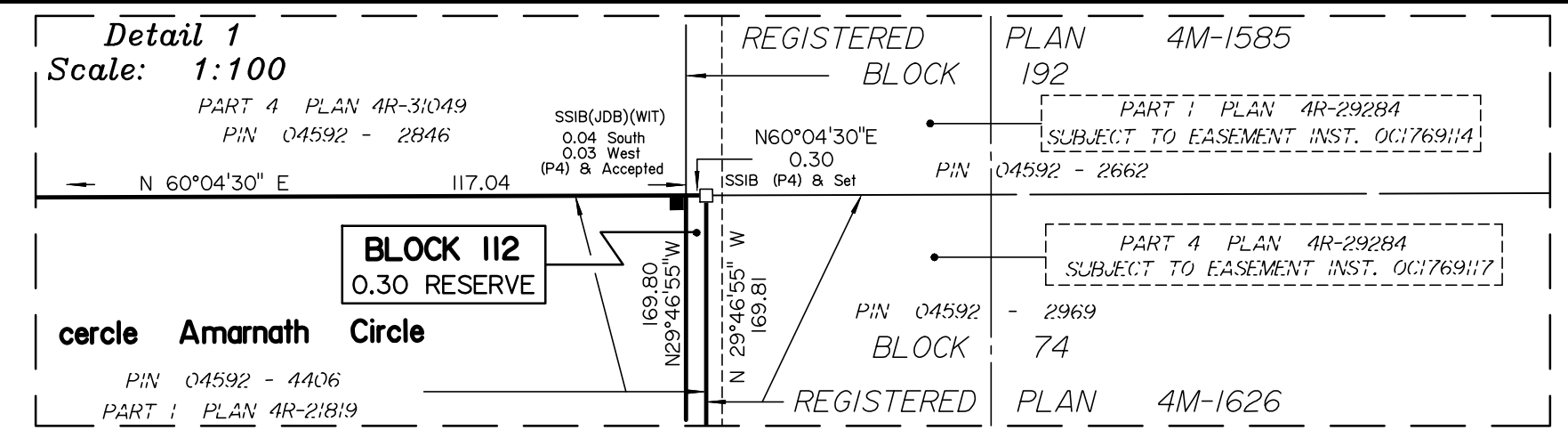
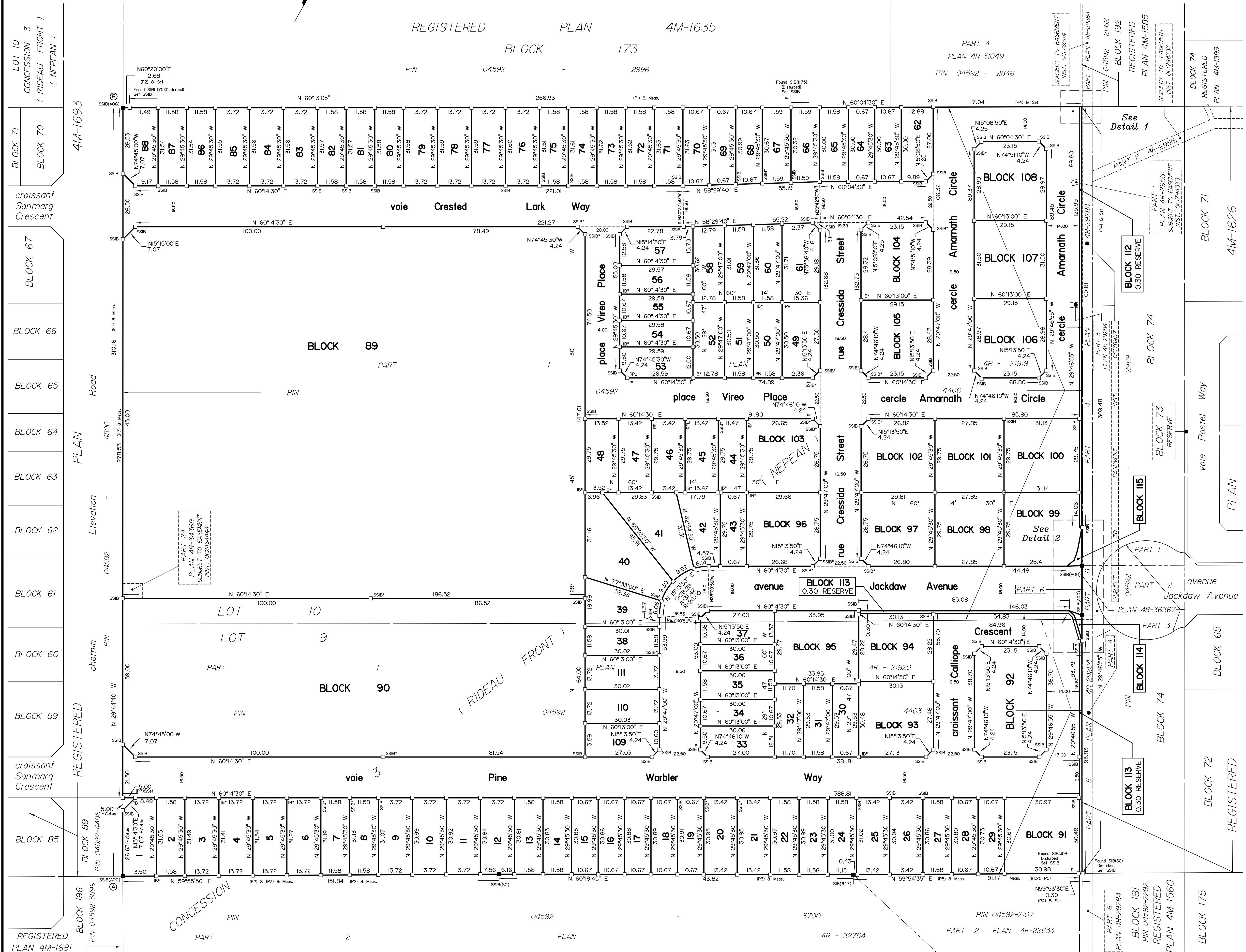
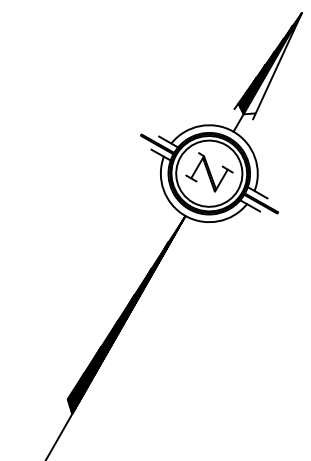


LOT	RADIUS	ARC	CHORD	BEARING
39	20.00	6.06	6.04	N 21°06'20" W
40	20.00	9.30	9.22	N 0°54'00" E
41	20.00	9.92	9.82	N 28°26'00" E
42	20.00	6.14	6.12	N 51°28'30" E



APPROVED UNDER SECTION 51 OF THE PLANNING ACT BY THE CITY OF OTTAWA.

THIS _____ DAY OF _____, 20____.

VIVI CHL INTERIM GENERAL MANAGER
PLANNING, DEVELOPMENT AND BUILDING SERVICES
DEPARTMENT
CITY OF OTTAWA

PLAN 4M-

I CERTIFY THAT THIS PLAN IS REGISTERED IN THE LAND REGISTRY OFFICE FOR THE LAND TITLES DIVISION OF OTTAWA-CARLETON NO. 4 AT _____ O'CLOCK ON THE _____ DAY OF _____ AND ENTERED IN THE PARCEL REGISTER FOR PROPERTY IDENTIFIERS 04592-4403 AND 04592-4406 AND THE REQUIRED CONSENTS ARE REGISTERED AS PLAN DOCUMENT NO. _____

REPRESENTATIVE FOR LAND REGISTRAR

This plan comprises all of PIN's 04592-4403 and 04592-4406.

Block 112 and cercle Amarnath Circle are subject to easement per Inst. OC1794333.
Block 89 is subject to easement per Inst. OC2464444.
Cercle Amarnath Circle is subject to easement per Inst. OC1769117.

PLAN OF SUBDIVISION OF PART OF LOTS 9 and 10 CONCESSION 3 (RIDEAU FRONT)
Geographic Township of Nepean
CITY OF OTTAWA
Surveyed by Annis, O'Sullivan, Vollebek Ltd.
Scale 1 : 750

Metric
DISTANCES AND COORDINATES SHOWN ON THIS PLAN ARE IN METRES AND CAN BE CONVERTED TO FEET BY DIVIDING BY 0.3048.

Surveyor's Certificate
I CERTIFY THAT:
1. This survey and plan are correct and in accordance with the Surveys Act, the Surveyors Act and the Land Titles Act and the regulations made under them.
2. The survey was completed on the 27th day of August, 2024.

Date _____
Mirel Aradu
Ontario Land Surveyor

OWNER'S CERTIFICATE
THIS IS TO CERTIFY THAT:
1. Lots 1 to 88, both inclusive, Lots 109, 110 and 111, Blocks 89 to 108, both inclusive, Blocks 114 and 115, the Streets, namely, cercle Amarnath Circle, croissant Callopie Crescent, rue Cressida Street, voie Crested Lark Way, avenue Jackdaw Avenue, place Vireo Place and voie Pine Warbler Way and the Surveys, namely, Blocks 112 and 113 have been laid out in accordance with our instructions.
2. The Streets are dedicated to City of Ottawa as public highways.

Dated the _____ day of _____, 2024
Christopher Taggart
Tamarack (Nepean) Corporation
I have authority to bind the corporation.

- NOTES AND LEGEND**
- denotes Survey Monument Planted
 - Survey Monument Found
 - SIB Standard Iron Bar
 - SSIB Short Standard Iron Bar
 - SSIB* Short Standard Iron Bar (0.3 Long)
 - IB Iron Bar
 - IB* Iron Bar (0.3 Long)
 - PB Plastic Bar
 - RPL Rock Plug
 - (AOG) Annis, O'Sullivan, Vollebek Ltd.
 - CLF Chain Link Fence
 - BF Board Fence
 - (P1) Registered Plan 4M-1635
 - (P2) Registered Plan 4M-1681
 - (P3) Plan 4R-32754
 - (P4) Registered Plan 4M-1626
 - (P5) Plan 4R-22633
 - (P6) Registered Plan 4M-1560
 - (P7) Registered Plan 4M-1693

All planned survey monuments are IB's unless otherwise noted.
Distances shown on curved limits are Arc distances unless otherwise noted.
Distances shown on this plan are ground distances and can be converted to grid distances by multiplying by the combined scale factor of 0.999932.
Bearings are grid, derived from Can-Net 2016 Real Time Network GPS observations on reference points A and B, shown hereon, having a bearing of N 29°44'40" W and are referenced to Specified Control Points 01919791338 and 01919871649, MTM Zone 9 (76°30' West Longitude) NAD-83 (original).
Coordinates are derived from Can-Net 2016 Real Time Network GPS observations referenced to Specified Control Points 01919791338 and 01919871649, MTM Zone 9 (76°30' West Longitude) NAD-83 (original).
Coordinate values are to urban accuracy in accordance with O. Reg. 216/10.
01919791338 Northing 5006055.96 Easting 346140.91
01919871649 Northing 5007189.87 Easting 372435.05
Point A Northing 5011663.36 Easting 363759.69
Point B Northing 5011932.66 Easting 363605.80

Caution: Coordinates cannot, in themselves, be used to re-establish corners or boundaries shown on this plan.

ANNIS, O'SULLIVAN, VOLLEBEK LTD.
14 Concourse Gate, Suite 500
Nepean, Ont. K2E 7S5
Phone: (613) 727-0850 / Fax: (613) 727-1079
Email: nepean@annisovl.com

Ontario Land Surveyors (Reg. No. 22079-2) Tamarack Pl. 9, 10, C3 RFP# REG SUB DIS 1

