

**LEGEND:**

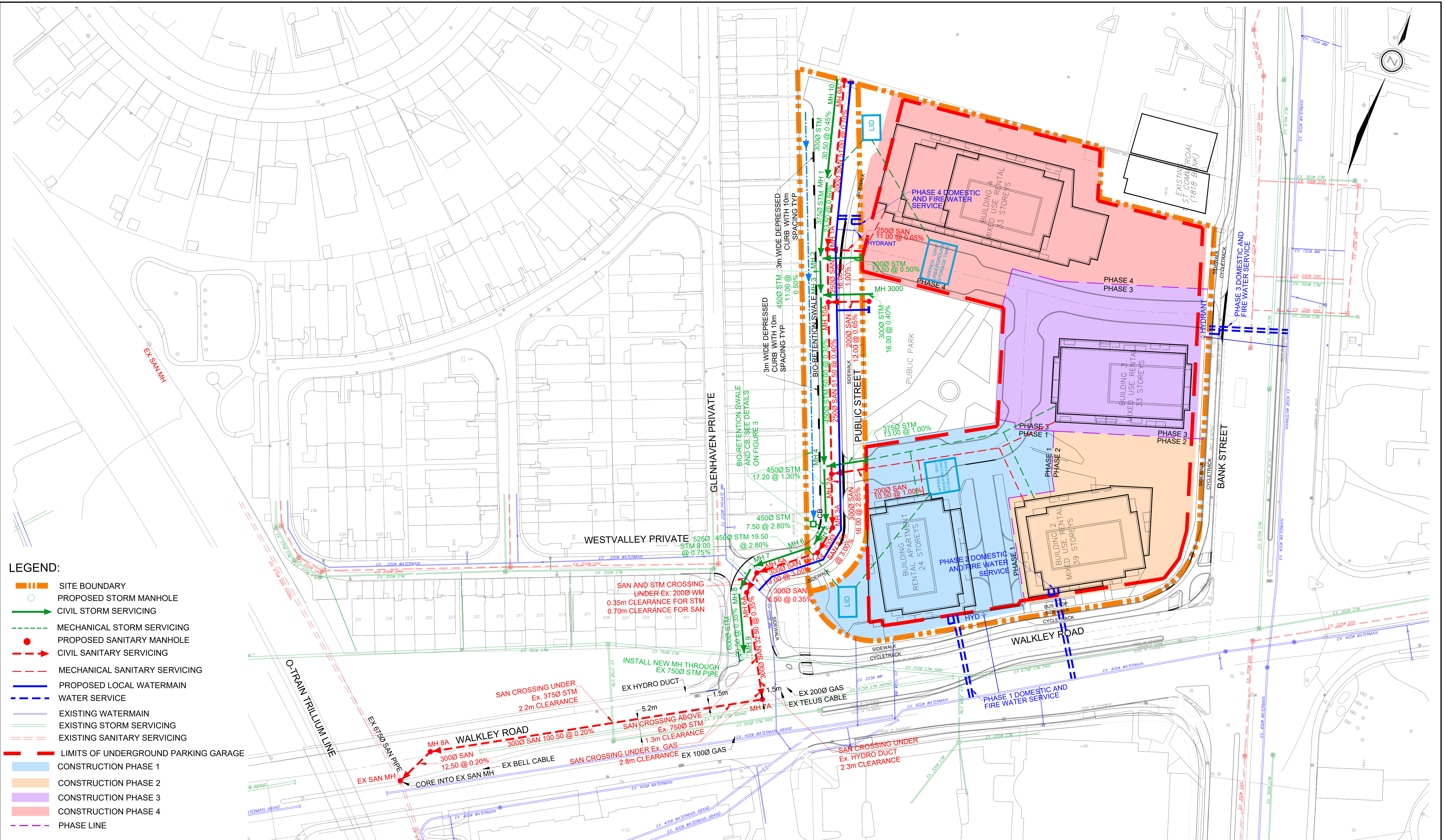
- - - SITE BOUNDARY
- STORM OVERLAND FLOW ARROW
- 89.905 PROPOSED CENTERLINE ELEVATION
- 0.15% ROAD SLOPE ARROW
- - - LIMITS OF UNDERGROUND PARKING GARAGE



120 Iber Road, Unit 203  
 Stittsville, ON K2S 1E9  
 TEL: (613) 836-0856  
 FAX: (613) 836-7183  
 www.DSEL.ca

**BGO - 1822 BANK ST**  
**CONCEPTUAL GRADING PLAN**  
 CITY OF OTTAWA

PROJECT No. :	23-1369
SCALE	1:500
DATE:	FEBRUARY 2026
DRAWING No.	3



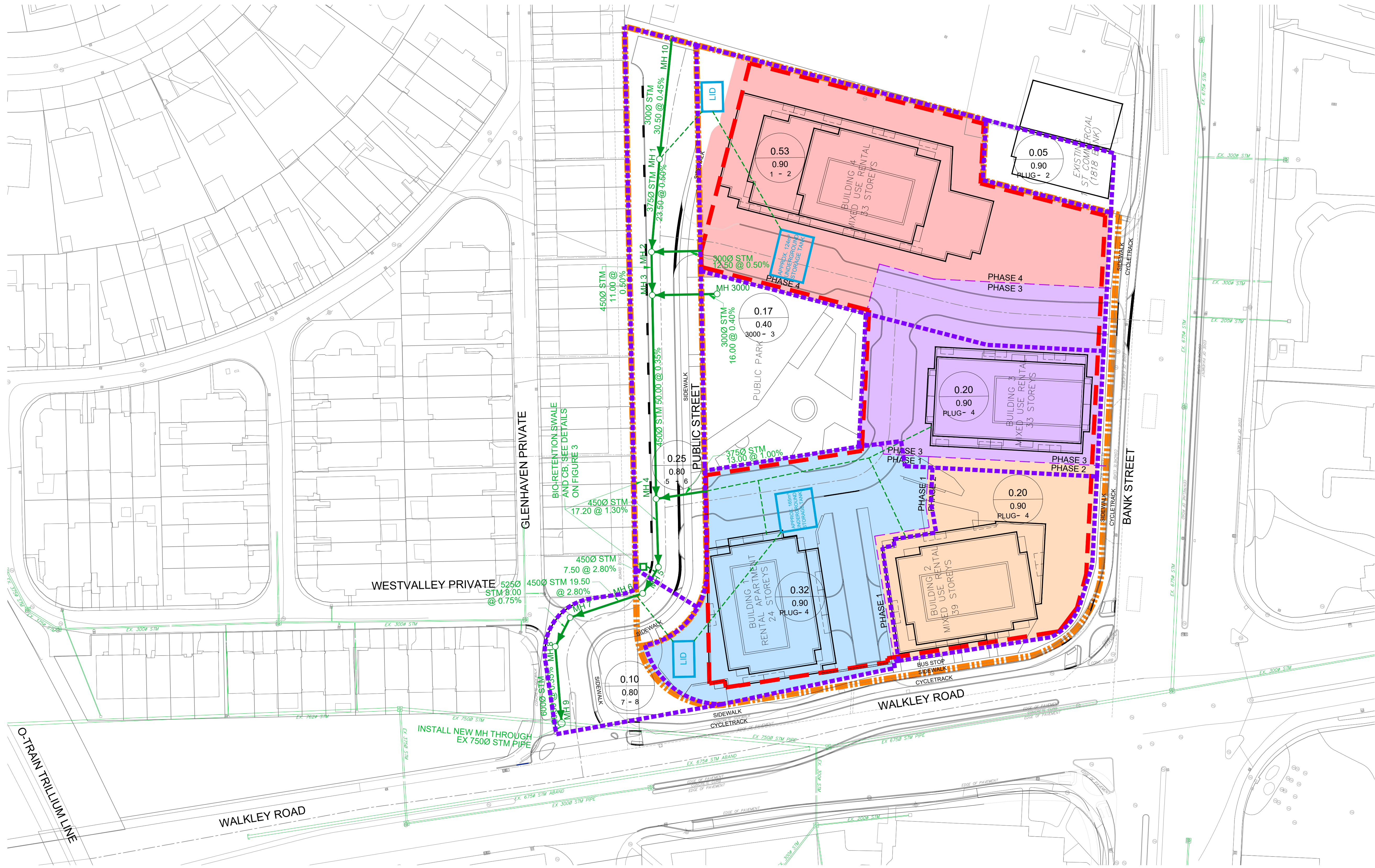
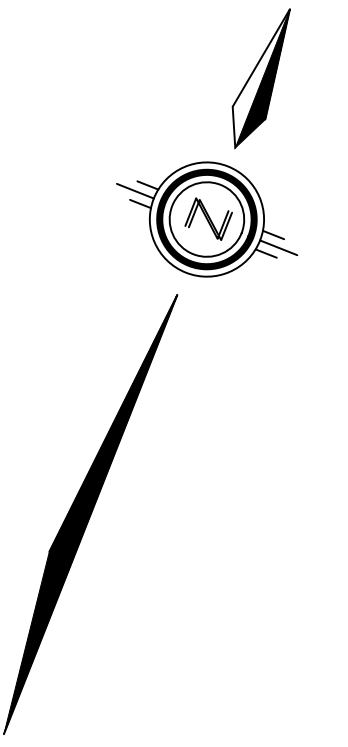
- LEGEND:**
- SITE BOUNDARY
  - PROPOSED STORM MANHOLE
  - CIVIL STORM SERVICING
  - - - MECHANICAL STORM SERVICING
  - PROPOSED SANITARY MANHOLE
  - - - CIVIL SANITARY SERVICING
  - - - MECHANICAL SANITARY SERVICING
  - PROPOSED LOCAL WATERMAIN
  - WATER SERVICE
  - EXISTING WATERMAIN
  - EXISTING STORM SERVICING
  - EXISTING SANITARY SERVICING
  - - - LIMITS OF UNDERGROUND PARKING GARAGE
  - CONSTRUCTION PHASE 1
  - CONSTRUCTION PHASE 2
  - CONSTRUCTION PHASE 3
  - CONSTRUCTION PHASE 4
  - - - PHASE LINE



120 Iber Road, Unit 203  
 Stittsville, ON K2S 1E9  
 TEL: (613) 836-0856  
 FAX: (613) 836-7183  
 www.DSEL.ca

**BGO - 1822 BANK ST**  
**CONCEPTUAL SERVICING PLAN**  
 CITY OF OTTAWA

PROJECT No. :	23-1369
SCALE	1:500
DATE:	FEBRUARY 2026
DRAWING No.	4



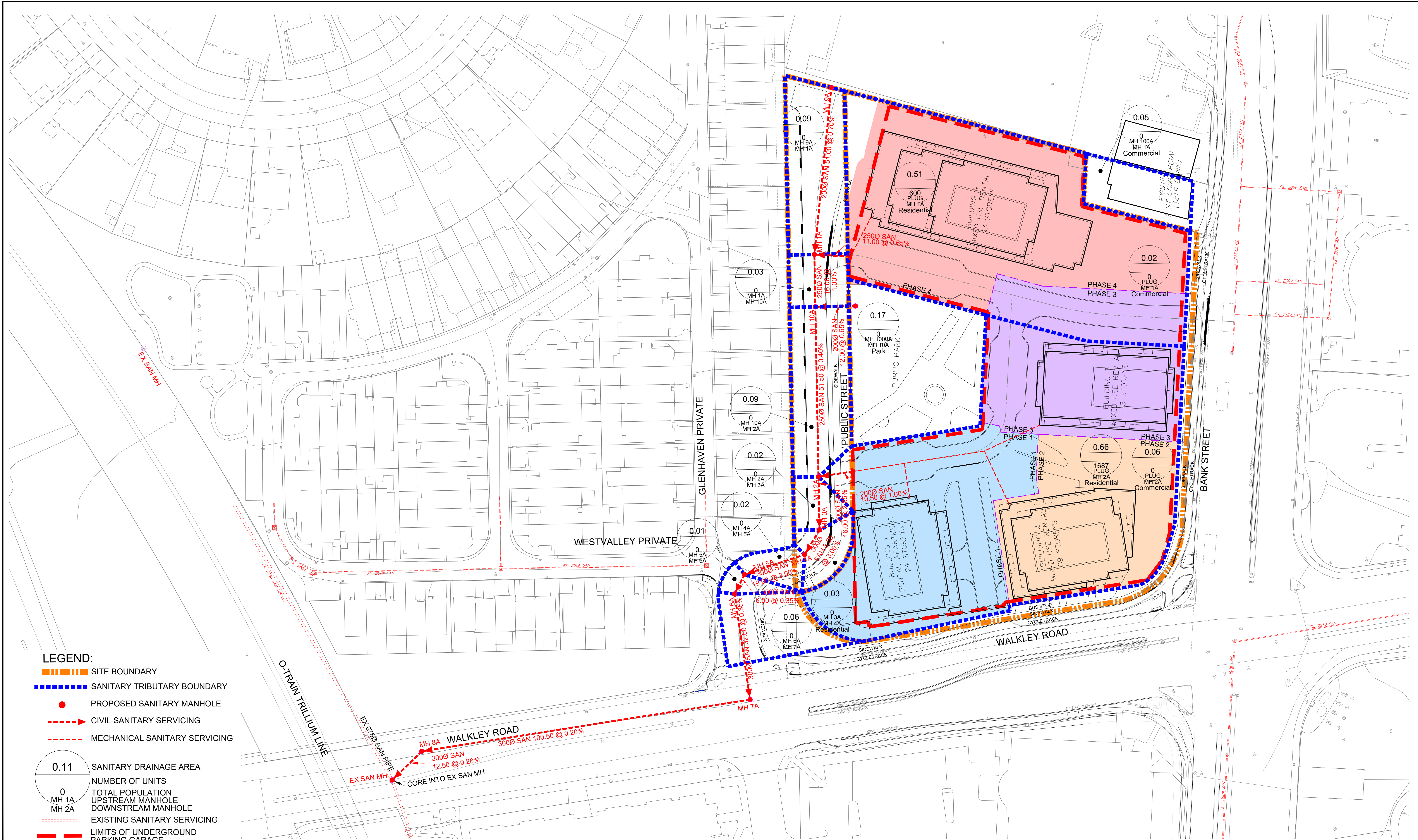
- LEGEND:**
- SITE BOUNDARY
  - STORM TRIBUTARY BOUNDARY
  - PROPOSED STORM MANHOLE
  - CIVIL STORM SERVICING
  - MECHANICAL STORM SERVICING
- 
- 0.53 STORM DRAINAGE AREA
  - 0.9 RUNOFF COEFFICIENT
  - 1 - 2 UPSTREAM TO DOWNSTREAM MANHOLE
  - EXISTING STORM SERVICING
  - LIMITS OF UNDERGROUND PARKING GARAGE



120 Iber Road, Unit 203  
 Stittsville, ON K2S 1E9  
 TEL: (613) 836-0856  
 FAX: (613) 836-7183  
 www.DSEL.ca

**BGO - 1822 BANK ST**  
**STORM SERVICING PLAN**  
 CITY OF OTTAWA

PROJECT No. :	23-1369
SCALE	1:500
DATE:	FEBRUARY 2026
DRAWING No.	5



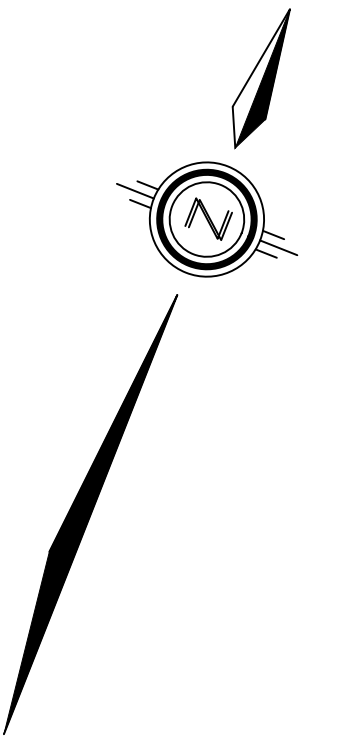
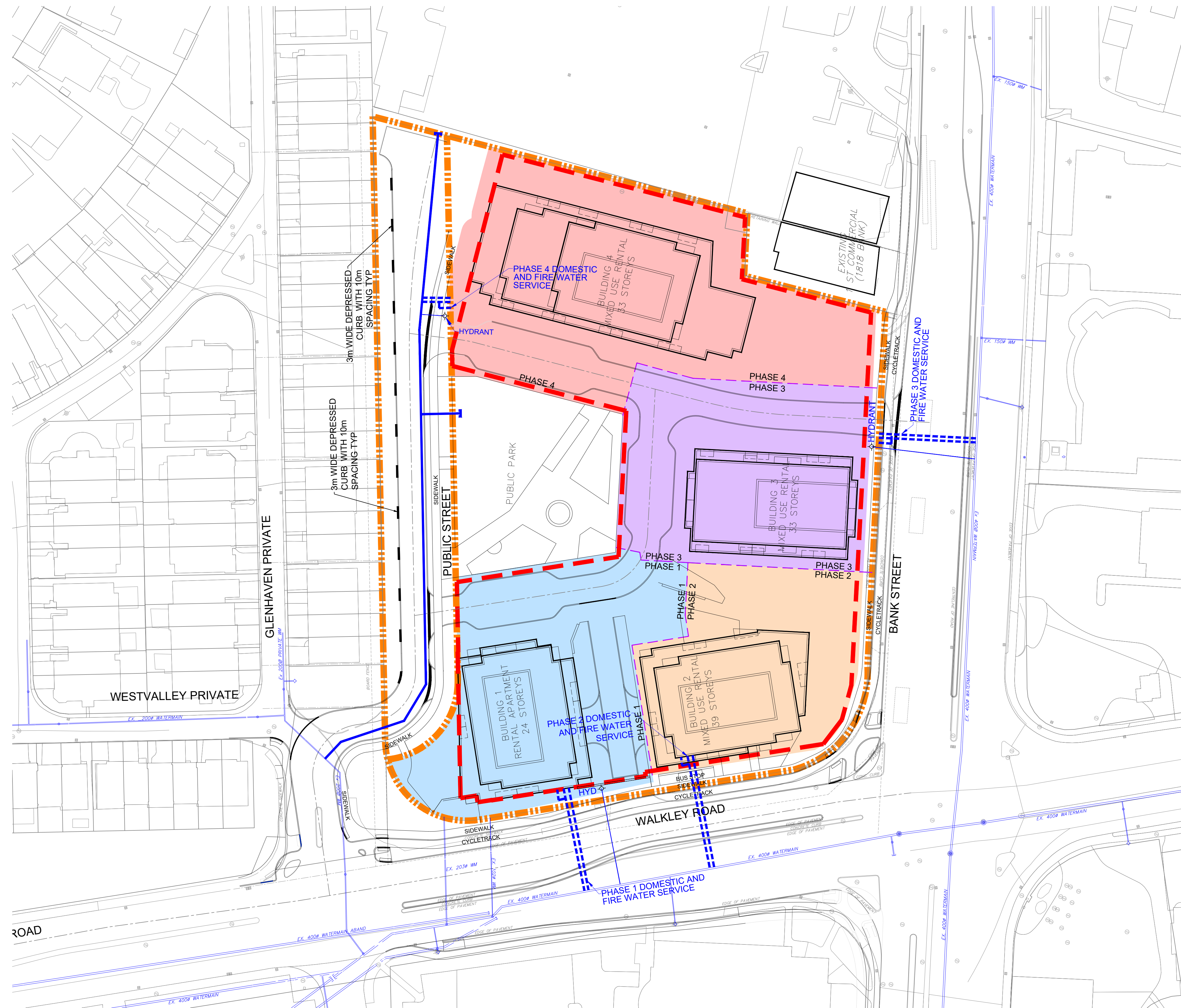
- LEGEND:**
- - - - - SITE BOUNDARY
  - - - - - SANITARY TRIBUTARY BOUNDARY
  - PROPOSED SANITARY MANHOLE
  - - - - - CIVIL SANITARY SERVICING
  - - - - - MECHANICAL SANITARY SERVICING
  - 0.11 SANITARY DRAINAGE AREA
  - 0 TOTAL POPULATION
  - MH 1A UPSTREAM MANHOLE
  - MH 2A DOWNSTREAM MANHOLE
  - - - - - EXISTING SANITARY SERVICING
  - - - - - LIMITS OF UNDERGROUND PARKING GARAGE



120 Iber Road, Unit 203  
 Stittsville, ON K2S 1E9  
 TEL: (613) 836-0856  
 FAX: (613) 836-7183  
 www.DSEL.ca

**BGO - 1822 BANK ST  
 SANITARY SERVICING PLAN  
 CITY OF OTTAWA**

PROJECT No. :	23-1369
SCALE	1:500
DATE:	FEBRUARY 2026
DRAWING No.	6



**NOTE:**  
 HYDRANTS SHALL BE INSTALLED  
 ALONG WEST SIDE OF BANK  
 STREET AND NORTH SIDE OF  
 WALKLEY ROAD

- LEGEND:**
- - - - - SITE BOUNDARY
  - PROPOSED LOCAL WATERMAIN
  - - - - - EXISTING WATERMAIN
  - - - - - LIMITS OF UNDERGROUND PARKING GARAGE



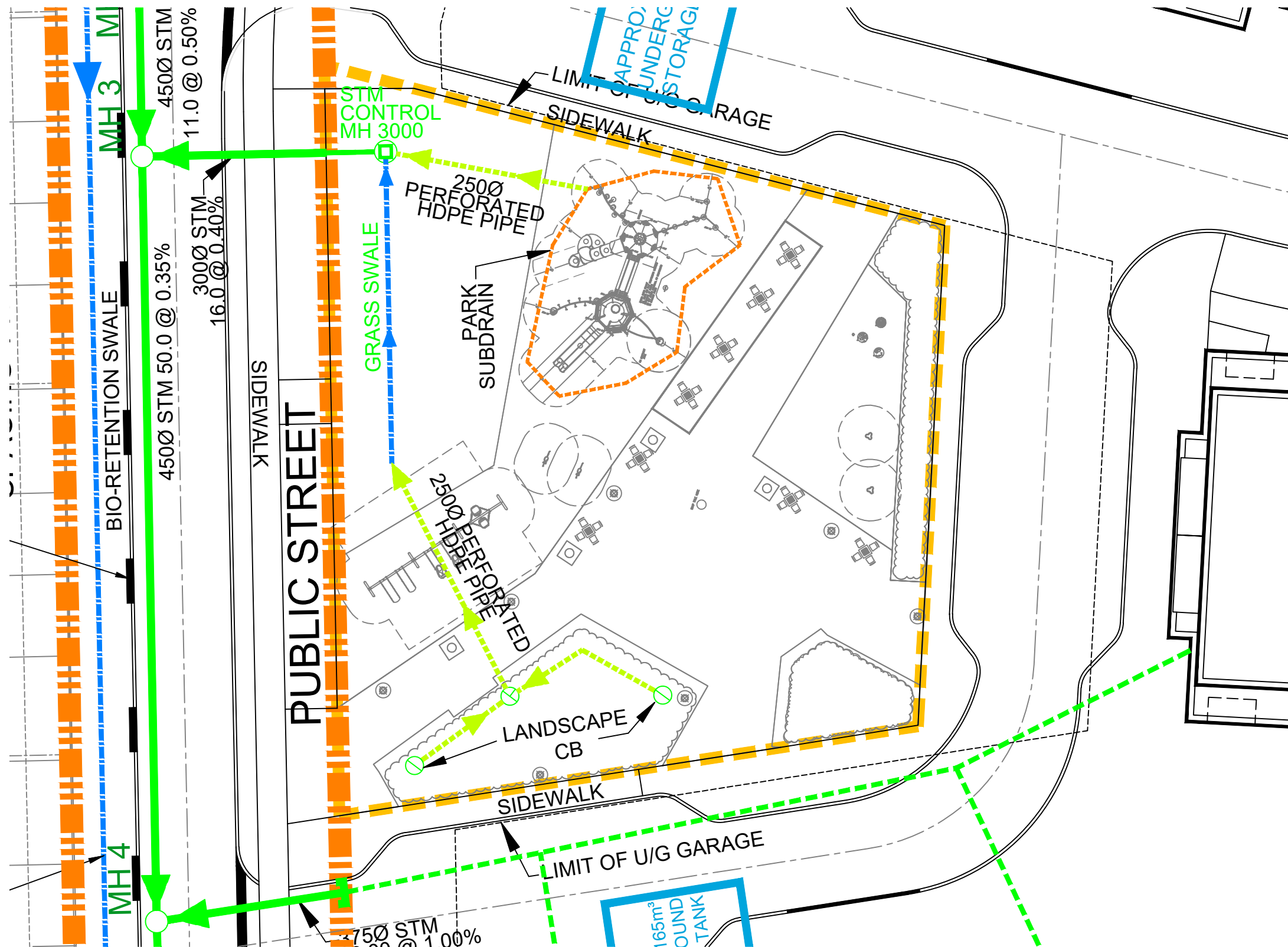
120 Iber Road, Unit 203  
 Stittsville, ON K2S 1E9  
 TEL: (613) 836-0856  
 FAX: (613) 836-7183  
 www.DSEL.ca

**BGO - 1822 BANK ST**  
**WATERMAIN SERVICING PLAN**  
 CITY OF OTTAWA

PROJECT No. :	23-1369
SCALE	1:500
DATE:	FEBRUARY 2026
DRAWING No.	7







- LEGEND:**
- ▬▬▬ PARK BOUNDARY
  - PROPOSED STORM MANHOLE
  - ⊕ LANDSCAPE CB
  - ➔ CIVIL STORM SERVICING
  - - - ➔ MECHANICAL STORM SERVICING
  - · - · ➔ 2500 PERFORATED HDPE PIPE

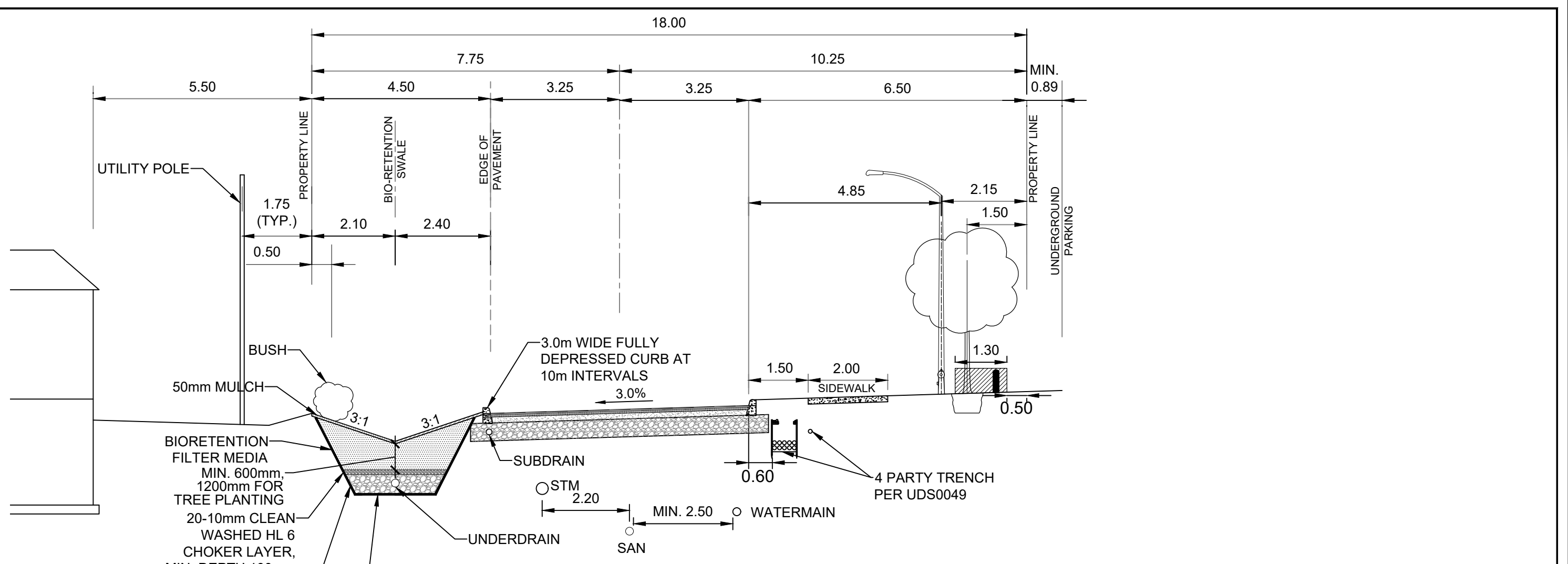


120 Iber Road, Unit 103  
 Stittsville, ON K2S 1E9  
 TEL: (613) 836-0856  
 FAX: (613) 836-7183  
 www.DSEL.ca

**BGO - 1822 BANK ST  
 PARK STORM MANAGEMENT PLAN  
 CITY OF OTTAWA**

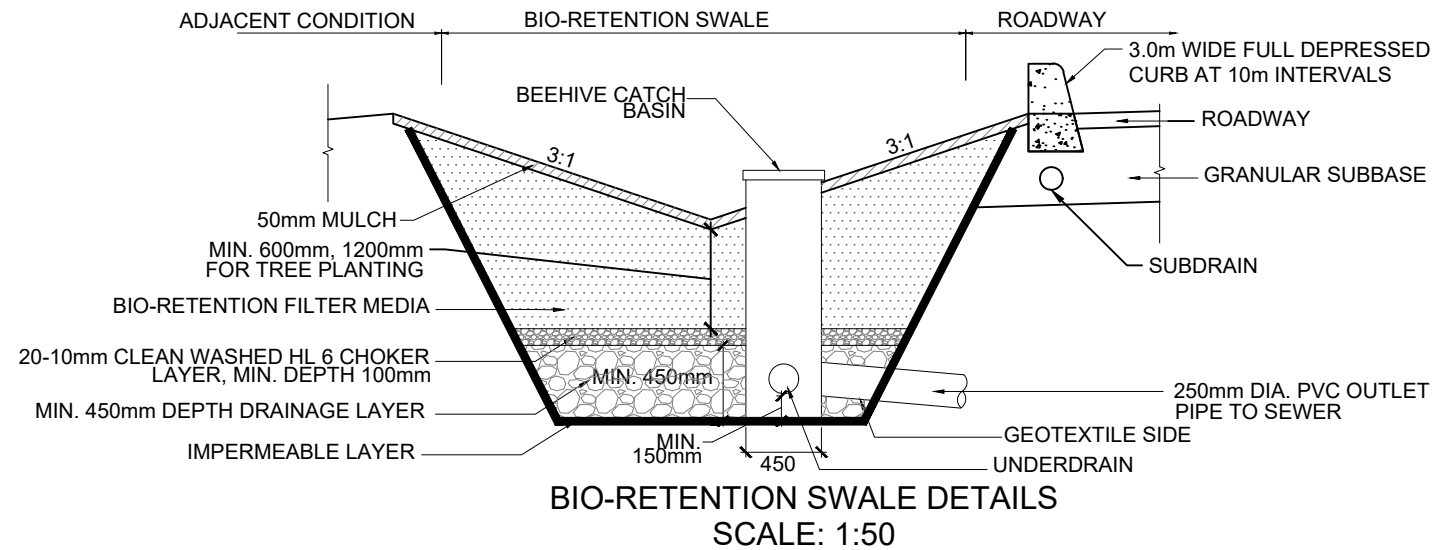
PROJECT No.:	23-1369
SCALE:	1:300
DATE:	FEBRUARY 2026
FIGURE:	10





**PUBLIC STREET TYPICAL SECTION**  
SCALE: 1:100

**ROAD PAVEMENT STRUCTURE:**  
 40mm SUPERPAVE 12.5 ASPHALTIC CONCRETE  
 50mm SUPERPAVE 19.0 ASPHALTIC CONCRETE  
 150mm OPSS GRANULAR A CRUSHED STONE  
 450mm OPSS GRANULAR B TYPE II



**BIO-RETENTION SWALE DETAILS**  
SCALE: 1:50



120 Iber Road, Unit 103  
 Stittsville, ON K2S 1E9  
 TEL: (613) 836-0856  
 FAX: (613) 836-7183  
 www.DSEL.ca

**BGO - 1822 BANK ST**  
**TYP ROAD SECTION AND BIO-RETENTION SWALE DETAILS**  
**CITY OF OTTAWA**

PROJECT No.:	23-1369
SCALE:	AS SHOWN
DATE:	FEBRUARY 2026
FIGURE:	12