



GOLDBERG GROUP LAND USE PLANNING AND DEVELOPMENT
2098 AVENUE ROAD, TORONTO, ONTARIO M5M 4A8

PLANNING REPORT

Draft Plan and Zoning by-Law Amendment Application

6070 Fernbank Road, 5993, 6115, 6141 and 6159 Flewellyn Road, in the City of Ottawa

Prepared for: Caivan (Stittsville) Inc.

December 20, 2024

1st Revision: April 28, 2025

2nd Revision: November 10, 2025

3rd Revision: February 3, 2026

TABLE OF CONTENTS

1.0	Introduction	1
2.0	Background	2
3.0	Location and Description of the Subject Site	7
3.2	City Policy and Zoning Context of the Subject Site	8
3.3	Transportation	11
3.4	Site Servicing and Stormwater Management	13
3.5	Natural Heritage	13
3.6	Parks and Open Spaces	15
3.7	Geotechnical and Hydrogeology	15
4.0	Description of Surrounding Area Context	16
5.0	Description of Proposal	17
5.2	Built Form	20
5.3	Streets	20
5.4	Parks and Open Space	20
5.5	Applications Required to Implement the Proposal	21
6.0	Policy Context	22
6.2	Planning Act	22
6.2.1	Section 2	22
6.2.2	Parkland Dedication	24
6.2.3	Plan of Subdivision	24
6.3	Provincial Planning Statement, 2024 (“PPS”)	25
6.4	City of Ottawa Official Plan (“City OP”)	27
6.4.1	Future Neighbourhood Overlay	Error!
	Bookmark not defined.	
6.4.2	City-wide Policies	28
6.4.3	Transects	39
6.4.4	Urban Designations	39
6.4.5	Rural Countryside Designation	Error!
	Bookmark not defined.	
7.0	Proposed Zoning By-law Amendment	41
8.0	Relevant Guidelines and Other Considerations	46

9.0 Overall Conclusions

47

LIST OF FIGURES

Figure 1: Aerial Context Map

Figure 2: City of Ottawa Official Plan – Schedule A – Transect Policy Areas

Figure 3: City of Ottawa Official Plan – Schedule B9 – Rural Transect Policy

Figure 4: City of Ottawa Official Plan – Schedule C17 – Urban Expansion Areas

Figure 5: City of Ottawa By-law 2008-250

Figure 6: City of Ottawa Official Plan – Schedule C2 – Transit Network

Figure 7: City of Ottawa Official Plan – Schedule C11a – Natural Heritage System

Figure 8: City of Ottawa Official Plan – Schedule C9 – Rural Road Network

Figure 9: Concept Plan

Figure 10: Draft Plan of Subdivision

Figure 11: Draft Proposed Zoning By-law

1.0 Introduction

Caivan (Stittsville) Inc. (the “owner”), has retained Goldberg Group as land use planners in relation to the Zoning By-law Amendment (“ZBA”) and Draft Plan of Subdivision (DPS) applications seeking to permit the development of approximately 1,566 residential dwellings in the form of single detached and townhouse (two-storey regular and stacked) units on the lands known municipally as 6070 Fernbank Road, and 5993, 6115, 6141 and 6159 Flewellyn Road, in the City of Ottawa (the “subject site”).

This Planning Report reviews the existing and evolving land use and area context, the development capability of the subject site within this context, and the current Provincial and municipal policies and guidelines. The conclusion of this report is that from a land use planning perspective, the proposed development is a good and appropriate fit within the existing and planned context. It is also consistent with, conforms with, and is in keeping with, applicable policies and guidelines of the Province of Ontario and the City of Ottawa.

The following plans and reports have been prepared in support of the subject ZBA and DPS applications and have been updated based on City of Ottawa comments received on July 28, 2025. This documentation will be included under separate cover with this submission:

- J.D. Barnes Ltd, Draft Plan of Subdivision, dated January 21, 2026;
- J.D. Barnes Ltd, Plan of Survey (PLAN 4R-34545), dated April 8, 2022;
- J.D. Barnes Ltd, Plan of Survey (PLAN 4R-34873), dated August 31, 2022;
- Matrix Heritage, Stage 1 Archaeological Assessment, dated February 1, 2022;
- Matrix Heritage, Stage 2 Archaeological Assessment, dated September 6, 2022;
- Matrix Heritage, Stage 3 Archaeological Assessment, dated October 2022;
- Paterson Group, Hydrogeological Existing Conditions Report, dated August 7, 2024;
- Paterson Group, Geotechnical Report, dated August 7, 2024;

- Paterson Group, Hydrogeological Study and Water Budget Assessment, dated August 7, 2024;
- Paterson Group, Phase 1 Environmental Site Assessment, dated April 10, 2025;
- David Schaeffer Engineering Ltd., Functional Servicing Report, dated January 2026;
- Kilgour & Associates Ltd., Environmental Impact Study, dated November 7, 2025;
- CGH Transportation, Traffic Impact Assessment, dated January 2026;
- Gradient Wind Engineering Inc., Noise Report, dated January 9, 2026;
- NAK Design Strategies, Park Fit Plan, dated October 31, 2025;
- NAK Design Strategies, Parking Plan, dated January 15, 2026;
- NAK Design Strategies, Preliminary Streetscape Plans and Canopy Calculation Plan, dated January 23, 2026; and
- NAK Design Strategies, Urban Design Brief, dated January 2026.

To the extent applicable, these plans and reports have been utilized as input into the facts and opinions expressed in this Planning Report.

2.0 Background

The subject site is located within the W-4 Stittsville South Urban Expansion Area (“W-4 urban expansion area”) and was designated as Urban Expansion Area – Category 1, Future Neighbourhood Overlay, on Schedule C17 of the City of Ottawa Official Plan.

After the City of Ottawa adopted the new Official Plan in November 2021, a meeting was held with City staff on December 17th, 2021, to discuss the approval approach for the lands that are the subject of this application. An integrated OPA and Draft Plan process was discussed. Subsequently, the applicant provided a letter, authored by Fotenn and dated January 28th, 2022, describing how the process can be facilitated as transportation, servicing, planning and environmental scope similar to a Draft Plan process.

On February 7th, 2022, a meeting was held with City staff, including both Policy and Development Review, to discuss the January 28th, 2022, letter and study requirements for a submission. The outcome of the meeting was to prepare scoped Terms of Reference documents for Planning, Servicing, Environmental, and Transportation to facilitate the concept plan process. During the meeting, City staff indicated they were preparing a report on the future neighbourhood urban expansion area process.

On March 24th, 2022, the applicant submitted the draft Terms of Reference documents as discussed in the February 2022 meeting, for City staff review. This included Terms of Reference documents for a scoped Master Servicing Study, Traffic Impact Assessment, Environmental Impact Assessment, Geotechnical and Hydrogeology reports. On March 25th, 2022, City staff confirmed receipt and stated the documents would be circulated for review and comment.

On May 6th, 2022, City staff provided comments on the Terms of Reference documents, with the disclaimer that the comments could be used to finalize drafts of the Terms of Reference documents that would guide the preparation of the reports. It was noted that the Terms of Reference documents would be finalized once adopted by City of Ottawa Council.

In a letter dated May 6, 2022, Planning Staff confirmed that given the scale and scope of the W-4 urban expansion area, a full Community Design Plan process is not required.

The process outlined in the letter generally consisted of the submission of a Concept Plan and associated reports to be endorsed by the City, followed by the submission of the Draft Plan of Subdivision and Zoning By-law amendment applications and subsequently an OPA to lift the Future Neighbourhood Overlay.

From May 2022 to July 2024, City staff comments were incorporated into draft Terms of Reference documents. On July 21st, 2022, the applicant provided a letter and revised Terms of Reference documents to City staff, acknowledging the concept plan process and initiating the fieldwork to prepare the reports, understanding the work would be completed at the applicant's risk given the Official Plan was still pending ministerial approval.

From May 2022 to September 2022, field work was completed on the lands that are the subject of this application. Provincial adoption of the Official Plan followed shortly after on November 1st,

2022. In a letter dated November 4th, 2022, the applicant responded to Bill 23, encouraging support for a simplified process. On December 19th, 2022, City staff provided a letter in response, reiterating the concept plan process detailed in the May 6th, 2022 letter, stating the proposed approach will form part of a report that will go to Planning Committee and Council for approval in Q1 2023. The letter included a statement that any changes in the process due to Bill 23 would be reviewed and implemented in the aforementioned report. As such, the process to lift the Future Neighbourhood Overlay for the lands that are the subject of this application was paused from November 2022 to September 2023 while the aforementioned report was prepared and approved by City Council on August 23rd, 2023.

In a staff report submitted to the Planning and Housing Committee on August 16, 2023, and subsequently endorsed by Council on August 23, 2023, outlined in more detail the process for Future Neighbourhoods in Urban Expansion Areas. It provided that through a Concept Plan process, either the City or proponent can initiate the OPA to remove the Future Neighbourhood Overlay. A proponent-led OPA through an application provides timing flexibility by utilizing resources from Development Review. As such, the owners opted to initiate the OPA application process.

The first phase of the Concept Plan process for Future Neighbourhoods Overlays included the preparation of the Terms of Reference and Existing Conditions Reports relating to environmental, ecological, and engineering information. These reports detail the site's natural features, infrastructure capacity, and opportunities and constraints that lead to a recommended developable area. These reports set the foundation for the supporting studies and plans to be undertaken in the second phase. The first phase has been completed by the proponent through submission of reports and meetings with City staff.

On September 27th, 2023, an initial meeting was attended by City of Ottawa Policy department staff. The applicant submitted completed existing condition reports at the meeting, including the scoped Master Servicing Study, Transportation Impact Assessment, and Environmental Impact Assessment.

On October 5th, 2023, Project Management Meeting #1 was attended by City of Ottawa Policy department staff and next steps for the process were established. The existing condition reports were to be circulated for review and comment, working group meetings were to be scheduled for

ecological, servicing, and transportation review, consultation with the local councillor was to occur, adjacent landowners were to be notified of the process, and an open house was to be scheduled for January 2024. Shortly following, infrastructure resources were confirmed with the Infrastructure Policy department, confirming project leads.

On October 29th, 2023, Project Management Meeting #2 was attended by City of Ottawa Policy department staff and the Concept Plan approach was reconfirmed. City of Ottawa Policy department staff would initiate the process and be responsible for approving the terms of reference, existing condition reports and facilitate public consultation. Once the terms of reference and existing condition reports were approved and a public consultation meeting was completed, the process would proceed to Development Review for review and approval, including an OPA with the identified required studies: Scoped Master Servicing Study, Scoped Environmental Management Plan, Scoped Community Transportation Study, and a Concept Plan report.

On November 2nd, 2023, a meeting with City staff was held to discuss the necessary process for municipal drains in the lands that are the subject of this application. It was indicated that the scope of work would fall under Section 65 of the Drainage Act with updates to the change in land use and incorporation of new connections to the Faulkner Municipal Drain. It was clarified there may be involvement of a Drainage Engineer for confirmation of adequate outlet. The Drainage Engineer was appointed by Council on October 16th, 2024.

From November 2023 to February 2024, Project Management Meetings #3 through #5 were held to review the status of the working group sessions and ensure the terms of reference were approved, existing condition reports were being reviewed, discuss the upcoming public consultation meeting in early 2024, and collaborate with the local councillor regarding public consultation. Public Open House #1 was held on February 29th, 2024, to introduce the public to the process. Presentation boards indicated a second public meeting would occur in Spring 2024 with Draft Plan submission in 2024, including an OPA and Zoning by-law application, with approval scheduled for Fall 2024 – Winter 2025. Concurrent with the Project Management Meetings, separate monthly working group session meetings were held with Infrastructure Policy, Transportation Policy, and Natural Systems.

Two Public Open Houses have been held for the W-4 Urban Expansion Area. A Public Open House #1 (POH #1”) was held on February 29th 2024 to kick-off the project. A Public Open House

#2 (POH #2") was held on July 18th, 2024, where existing conditions and constraints layer were presented and two preliminary concept plans were presented as further detailed later in this Planning Report.

Following the first public open house, additional project management meetings occurred from March 2024 to July 2024. Bi-weekly meetings included the discussion of action items to meet process timelines and deliverables, with the focus on the development of the Concept Plan. Meeting with City staff occurred to approve the existing conditions for the next public consultation meeting and additional analysis was conducted to develop the Concept Plan and proceed with draft technical studies that involved Infrastructure Policy, Transportation, Natural Systems, and Parks. Additional meetings were held with Natural Systems to arrive at a constraint layer to guide the concept plan (see attached chronology). Working group session meetings continued to ensure deliverables for the second open house had concurrence.

Public Open House #2 was held on July 18th, 2024, showcasing the existing conditions, servicing options, Concept Plan options, and high-level mobility network for transportation. At that point, Infrastructure Policy, Natural Systems and Transportation Policy staff directed the applicant to proceed with preparing the Scoped Master Servicing Study, Transportation Impact Assessment and Environmental Impact Study for submission and review.

On July 24th, 2024, a meeting took place with City staff from the Development Review department regarding the submission of a private OPA with required technical studies as per the August 23rd, 2023 report to Council stating that an OPA can be processed by the Development review department.

Based on the work completed between February 2022 and July 2024, the submission of an OPA, DPS, and ZBA applications, including applicable studies, occurred on August 14th, 2024. On September 11th, 2024, the City of Ottawa provided a letter stating the applications are deemed incomplete. The applicant and City staff attended a meeting on September 26th, 2024, to review the applicant's response to the supposed deficiencies.

On October 8th, 2024, a meeting with Policy and Development Review departments was held to reconfirm the OPA and finalization of the Concept Plan process could be led by Development

Review, with the City's Policy staff to support the review of the OPA application as part of the technical review process.

Additional meetings with the Policy and Development Review departments occurred in October and November of 2024 to resolve the alleged deficiencies to have the OPA application deemed complete.

A resubmission of the OPA application was filed on December 20, 2024 and was deemed complete by the City on January 16, 2025. The City of Ottawa provided consolidated comments from the formal review of the OPA application on March 6th, 2025 and the OPA application was updated and resubmitted, addressing the aforementioned comments, on April 24th, 2025.

On September 17, 2025 the OPA application to remove the Future Neighbourhood Overlay was approved by the Planning and Housing Committee and the decision was adopted by Council on September 25, 2025. As such, the subject site is now included within the urban boundary and is designated Neighbourhoods.

This Planning Report has been revised based on changes made since the previous submission addressing comments from the City received in a letter dated July 28, 2025.

3.0 Location and Description of the Subject Site

The subject site is a large irregularly-shaped parcel of greenfield lands, approximately 133 acres (54 ha) in size, located west of Shea Road and north of Flewellyn Road in the west end of the City of Ottawa. The subject site has a frontage of approximately 460 m (1,509 ft) on Flewellyn Road and 103 m (337 ft) on Shea Road.

Most of the subject site is currently vacant and undeveloped, with a mix of farmland and forested areas. A large hydro corridor easement traverses the lands diagonally. The Davidson Stormwater Management Pond is located towards the center of the subject site, on the north side of the hydro corridor. It includes a sanitary pump station at its north end which serves the existing developed area immediately to the north and is intended to provide service to the Stittsville South lands.

There are four private properties located along the southern boundary of the lands, fronting onto Flewellyn Road which do not form part of the subject site. These parcels are identified as Holdout Parcels 1 and 2 in **Figure 1**.

As mentioned earlier, the East Parcel as identified in **Figure 1** is subject to a separate application submitted on August 14, 2024 and resubmitted on October 8, 2024.

Figure 1 shows the aerial map of the site and surrounding area context.

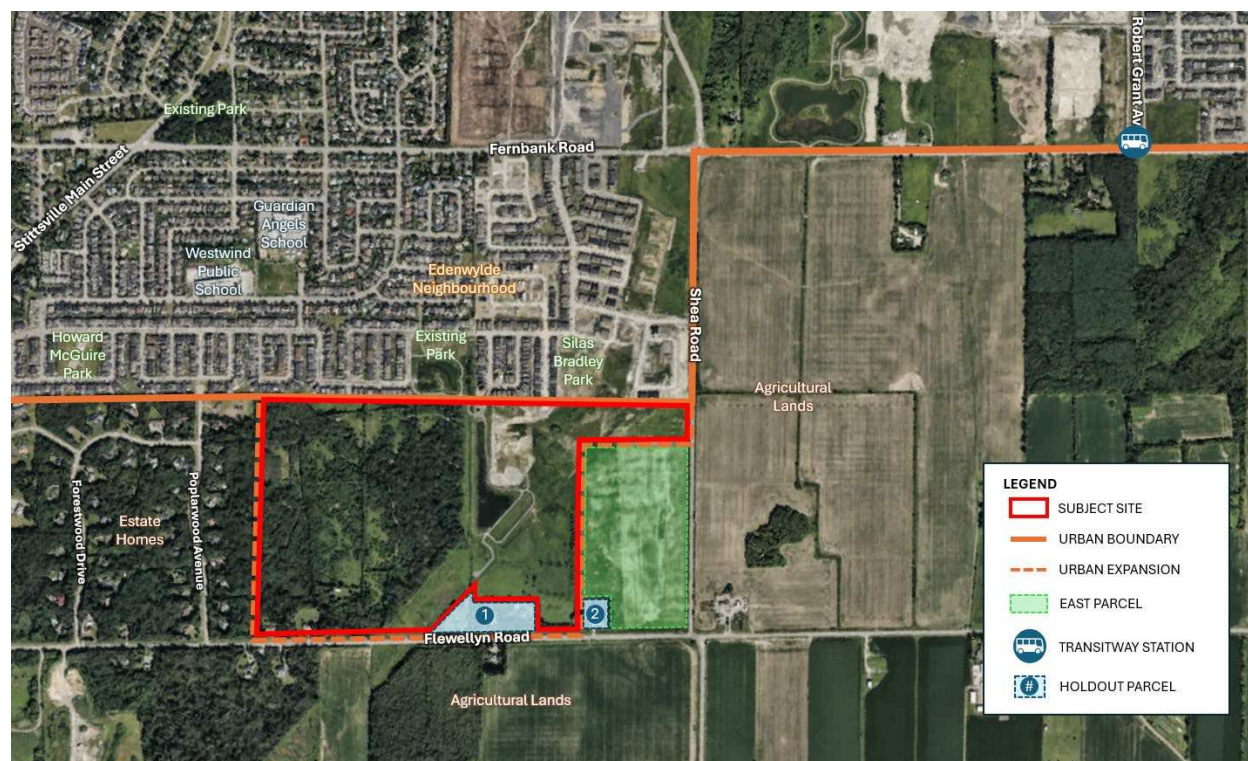


Figure 1 – Aerial Context

3.2 City Policy and Zoning Context of the Subject Site

The subject site was previously located within the Rural Transect on Schedule A of the City of Ottawa Official Plan (“City OP”), see **Figure 2**, and designated Rural Countryside on Schedule B9 – Rural Transect, see **Figure 3**. It was also located within a New Urban Expansion Area – Category 1, Future Neighbourhood Overlay, on Schedule C17, see **Figure 4**. However, as mentioned earlier, the approval of the OPA application for the removal of the Future

Neighbourhoods Overlay was adopted by Council on September 25, 2025 for the subject site and Holdout Parcel #1 (Figure 1) to Neighbourhoods.

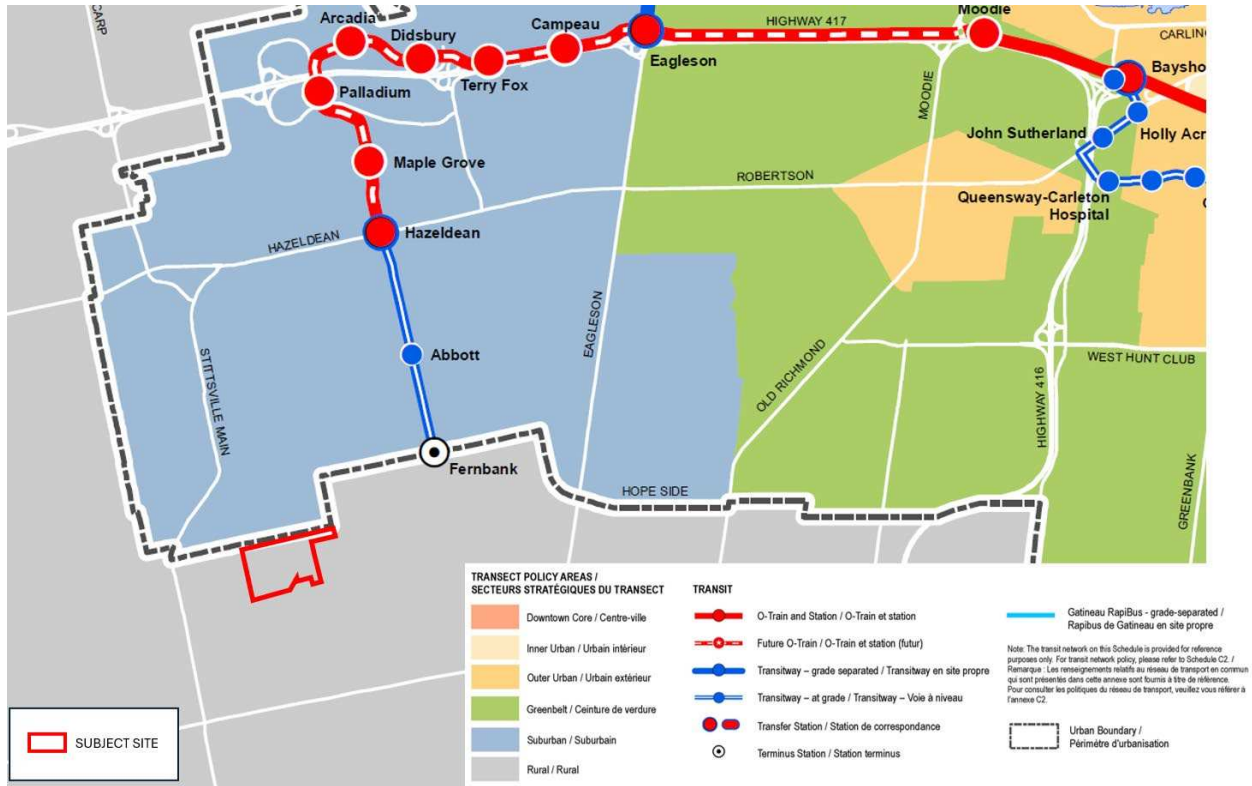


Figure 2 – Schedule A – Transect Policy Areas

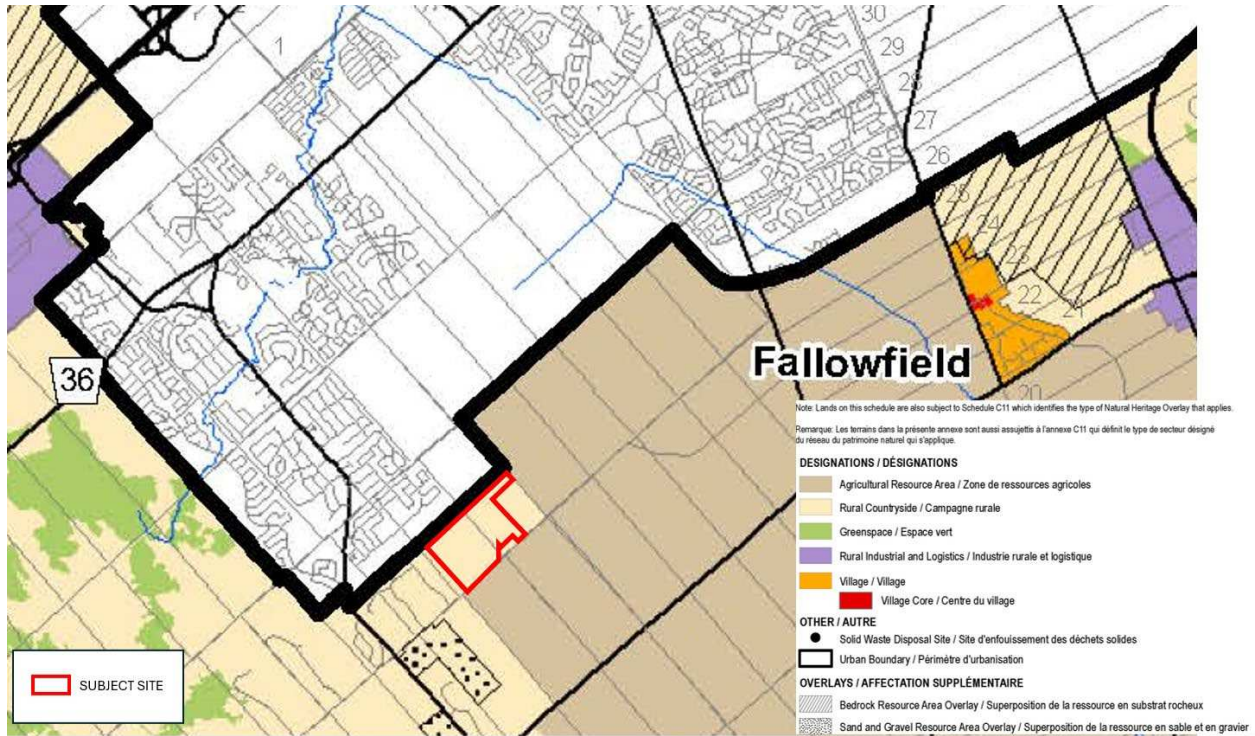


Figure 3 – Schedule B9 – Rural Transect

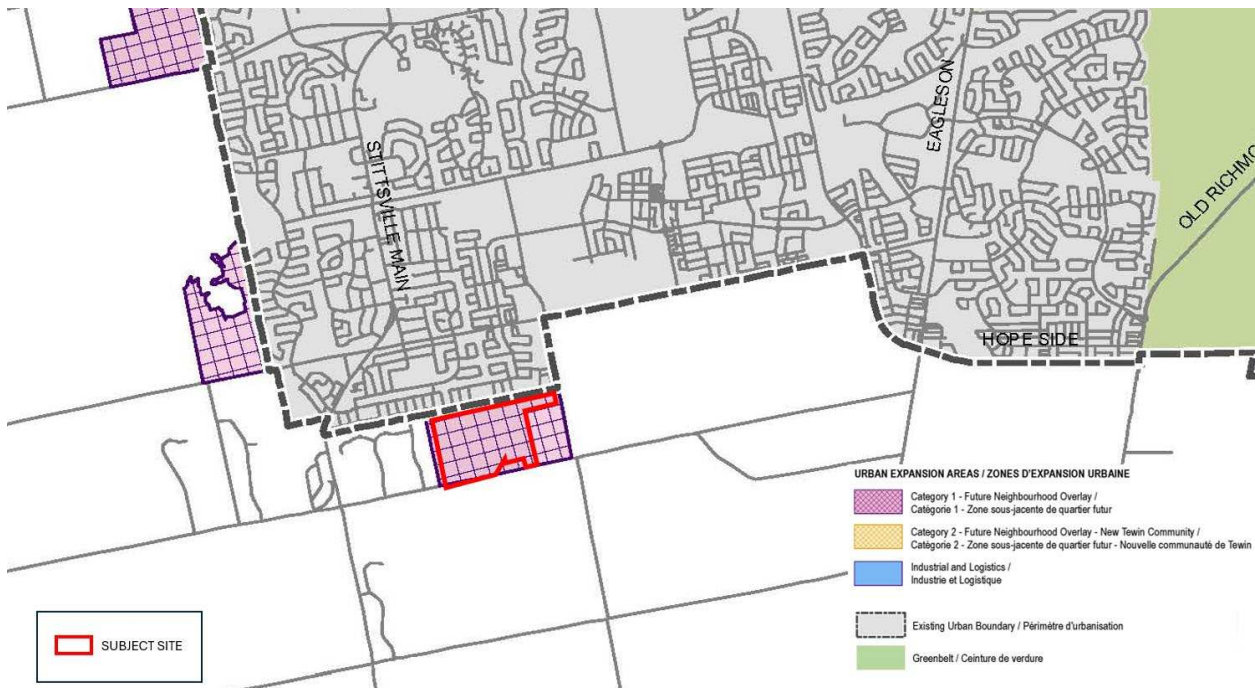


Figure 4 – Schedule C17 – Urban Expansion Areas

By way of background, it is important to note that in January 2021, the City’s Growth Management Strategy scored the subject site and the East Parcel highly. Due to a proposed by-law infraction by previous owners, the East Parcel and Holdout Parcel #3 (**Figure 1**) were not carried forward for the urban expansion and are accordingly not within the W-4 expansion area.

The East Parcel is 35.2 gross acres and is physically bounded by two roads and as such, future road connections to service a portion of the subject site traverse this parcel.

The zoning on the subject site is RU – Rural Countryside Zone, pursuant to the City of Ottawa Zoning By-law 2008-250, see **Figure 5** which zone permits residential uses, including a detached dwelling subject to zoning standards.

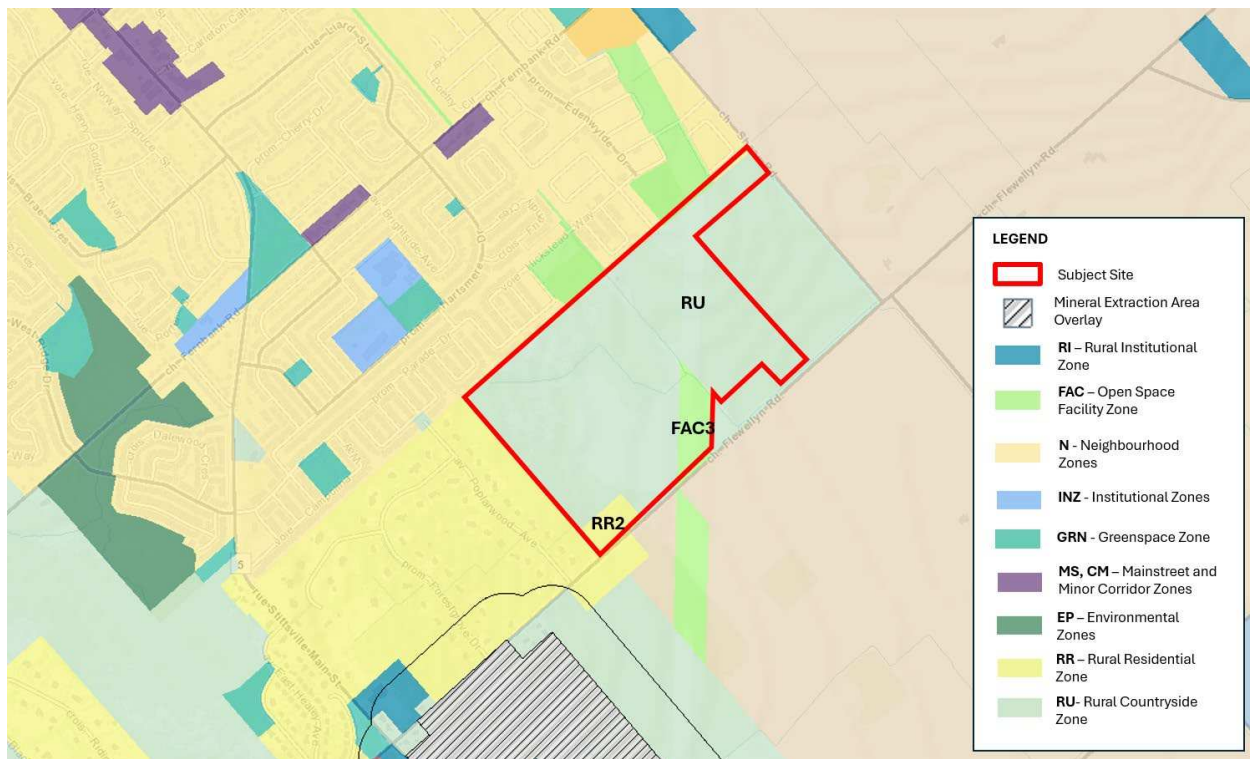
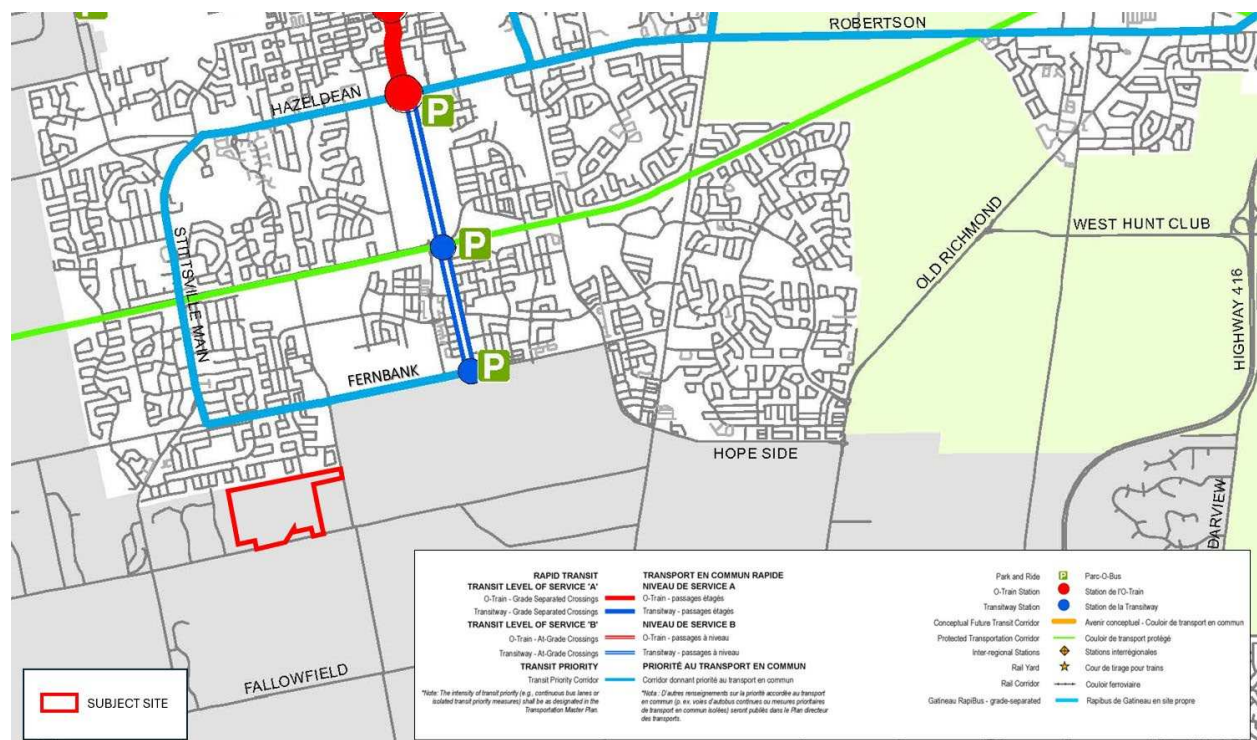


Figure 5 – Zoning By-law 2008-250

3.3 Transportation

Vehicular access to the subject site will be provided from Shea Road and Flewellyn Road and from the local road network of the existing adjacent neighbourhood to the north.

With respect to transit, there are no transit stops within 400 m of the subject site. There are multiple transit stops along Fernbank Road and Stittsville Main Street. Fernbank Road, located less than 700 m north of the subject site is identified as a Transit Priority Corridor on Schedule C2 of the City Official Plan (**Figure 6**). A transitway station with a future Park and Ride is located at the intersection of Fernbank Road and Robert Grant Avenue, approximately 1.5 km away from the subject site. Robert Grant Avenue is identified as a Transitway on Schedule C2 of the City Official Plan.



As detailed in the Traffic Impact Assessment (TIA) prepared by CGH Transportation, dated January 2026, the following transit routes are within proximity to the subject site, connecting to the northern Stittsville area:

- Route #61 – Currently travels along Shea Road, Fernbank Road and Stittsville Main Street, and operates a 30-minute service all day.
- Route #162 – Currently travels along Stittsville Main Street, Fernbank Road, and West Ridge Drive. It operates three afternoon buses and four evening buses per day.

- Route #262 – Currently travels along Fernbank Road and West Ridge Drive and operates a 30-minute service in the peak direction/period.
- Route #263 – Currently travel along Stittsville Main Street. It operates three morning buses and four afternoon buses per day in the peak direction.
- Route #301 – Currently travel along Stittsville Main Street. It operates one morning bus and one afternoon bus on Monday in the peak direction.

There are also existing pedestrian sidewalks and multi-use pathways connecting the subject site to the neighbourhood to the north and broader context as further detailed in the Transportation Report.

3.4 Site Servicing and Stormwater Management

The scoped Master Servicing Study (“MSS”) and Functional Servicing Report (“FSR”), prepared in April 2025 by David Schaeffer Engineering Ltd. (“DSEL”), was prepared for the W-4 urban expansion area and the wider study area including the East Parcel and holdout parcels. It concludes that the study area is serviceable with existing or planned infrastructure and Council upgrades to local infrastructure. An updated FSR dated January 2026 prepared by DSEL was prepared and included as part of this submission.

3.5 Natural Heritage

The Environmental Impact Study (“EIS”) prepared by Kilgour & Associates Ltd. for the subdivision, dated November 7, 2025 builds upon the previously approved Existing Conditions Report, dated January 19, 2024 and the agreed-upon constraints presented at the Public Open House #2 (“POH #2”) held on July 18, 2024.

The EIS provides that the subject site does not include any:

- Significant wetlands;
- Significant valleylands;
- Areas of Natural and Scientific Interest (ANSI);
- Urban Natural Features (UNF)

- Natural Environment Areas;
- Natural linkages;
- Groundwater features; and
- Landform features.

It however includes some:

- Habitat for Species At Risk (SAR);
- Significant Woodlands, most of which are indicated as Natural Heritage Features on Schedule C11a of the City OP (**Figure 7**);
- Significant Wildlife Habitat; and
- One small wetland feature and three headwater channels which are to be removed.

The EIS concludes that the proposed development could be sufficiently mitigated to limit net negative impacts to significant natural features or ecological functions of the subject site.

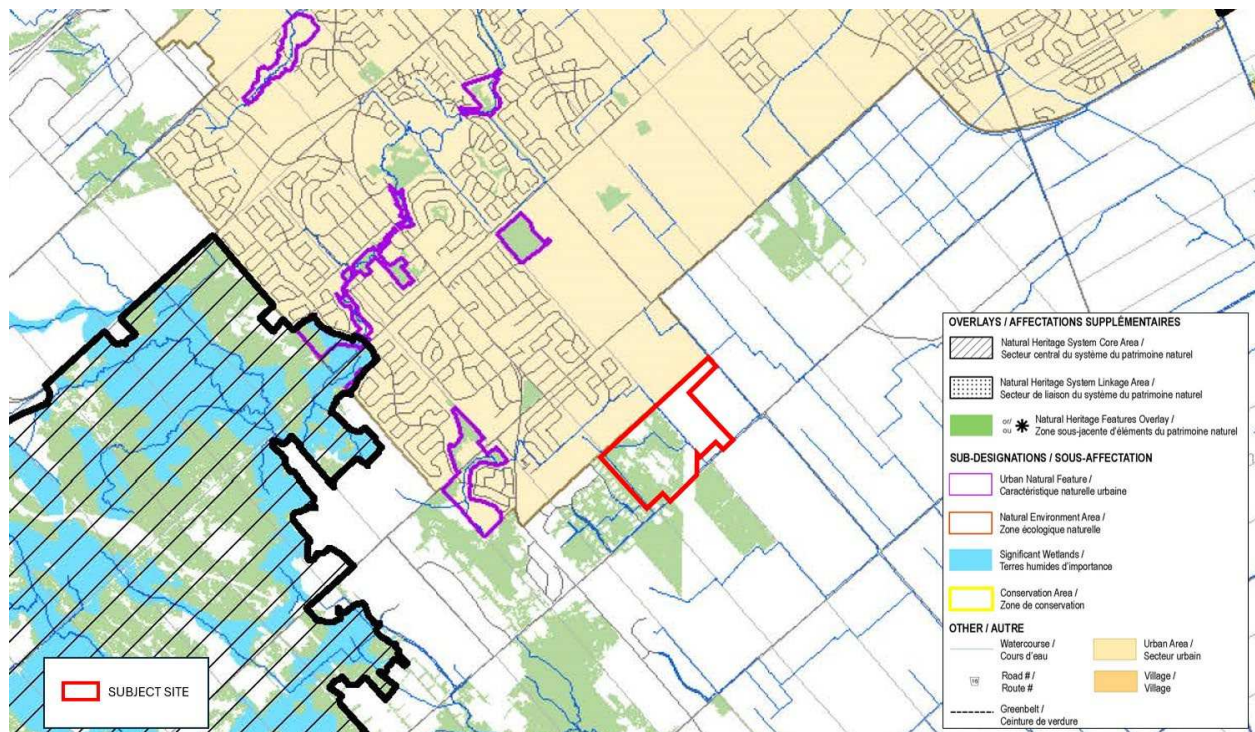


Figure 7 – Schedule C11a – Natural Heritage System

Furthermore, according to the EIS, the subject site is located within the Rideau River watershed and the Jock River subwatershed. It also contains a portion of the Faulkner Drain which is identified as not a significant hydrological contributor to the overall subwatershed and catchment area. An existing 18 m easement is registered in favour of the City over the length of the Caivan lands extending northward into the existing neighbourhood immediately north of the subject site. With respect to required setbacks, the existing neighbourhood immediately north of the subject site provides a minimal setback of <10 m from the channel bank to yard fencing, for the portion within the subject site north of the hydro corridor, a 30 m setback is proposed from the top of the bank (per City Official Plan Policy 4.9.3.2 c). Where the Faulkner Drain traverses the hydro corridor, a setback is not directly specified as the hydro corridor will continue to function. Where the Faulkner Drain approaches and abuts Flewellyn Road, the setback can be reduced from the existing stable top of slope in locations where the feature continues to exist as roadside ditch and provided certain conditions are met, as further detailed in the EIS.

3.6 Parks and Open Spaces

There are currently no existing parks on the subject site, however as mentioned earlier, there is a large hydro corridor under easement, which traverses diagonally through the subject site. The Davidson Stormwater Management pond is located towards the center of the subject site on the north side of the hydro corridor.

3.7 Geotechnical and Hydrogeology

The Geotechnical Investigation prepared by Paterson Group provides that the site gradually slopes from the northwest to the southeast. The site also gradually slopes downward from the northeast and southwest to the central portion of the site, thereby having a shallow valley bearing northwest to southeast. The subject site can support the proposed development from a geotechnical perspective. There will be areas in the northwestern portion of the development area where bedrock removal will be required. This will be further refined at a later implementation stage of development.

The Geotechnical Investigation also provides that the groundwater table will fluctuate seasonally ranging from 0.40 to 3.65 m below existing ground.

The Hydrogeological Existing Conditions Report prepared by Paterson Group provides that overburden soils at the subject site consist primarily of glaciomarine deposits with fine grained material to the east and coarse-grained material to the west. To the north, a small portion of the subject site consists of glacial till. The direction of hydraulic gradients shows that groundwater flow travels predominantly from west to east towards the eastern corner of the subject site. The overburden and bedrock groundwater flow in the vicinity of the subject site is considered to partially reflect local topography and subwatershed regional boundaries. The horizontal hydraulic gradient in the bedrock was observed to be in a general eastward direction with increased values within the western portion of the subject site. In general, the overburden soils at the subject site are relatively shallow and consist of moderate hydraulic conductivities with lower value materials on the east side of the development area. With the limited thickness and available quantity of groundwater within the overburden aquifer, it is not considered an adequate source for water supply wells. Surrounding water wells in the vicinity of the site are accessing the bedrock aquifers.

4.0 Description of Surrounding Area Context

The subject site is planned to complement the surrounding residential fabric. The following summary sets out notable details of the surrounding area context. A corresponding map of the surrounding area is shown in **Figure 1**.

North

- Immediately north of the subject site is the edge of the existing urban boundary and an existing neighbourhood known as Stittsville South – Area 6 Edenwylde. The neighbourhood includes a mix of residential dwelling types, parks, trails, open spaces, and community facilities, including schools.

West

- To the west of the subject site are the rear of large single-detached estates lots, fronting onto Poplarwood Avenue, within an existing subdivision, known as Woodside Acres. These lots have large and heavily treed rear yards.

South

- Immediately south of the subject site is Flewellyn Road, a two-lane rural collector road, as identified on Schedule C9 – Rural Road Network in the City OP, see **Figure 8**.
- On the south side of Flewellyn Road are existing agricultural lands.

East

- Immediately east of the subject site is Shea Road, a two-lane collector road, as identified on Schedule C9 – Rural Road Network in the City OP.
- On the east side of Shea Road are existing agricultural lands.

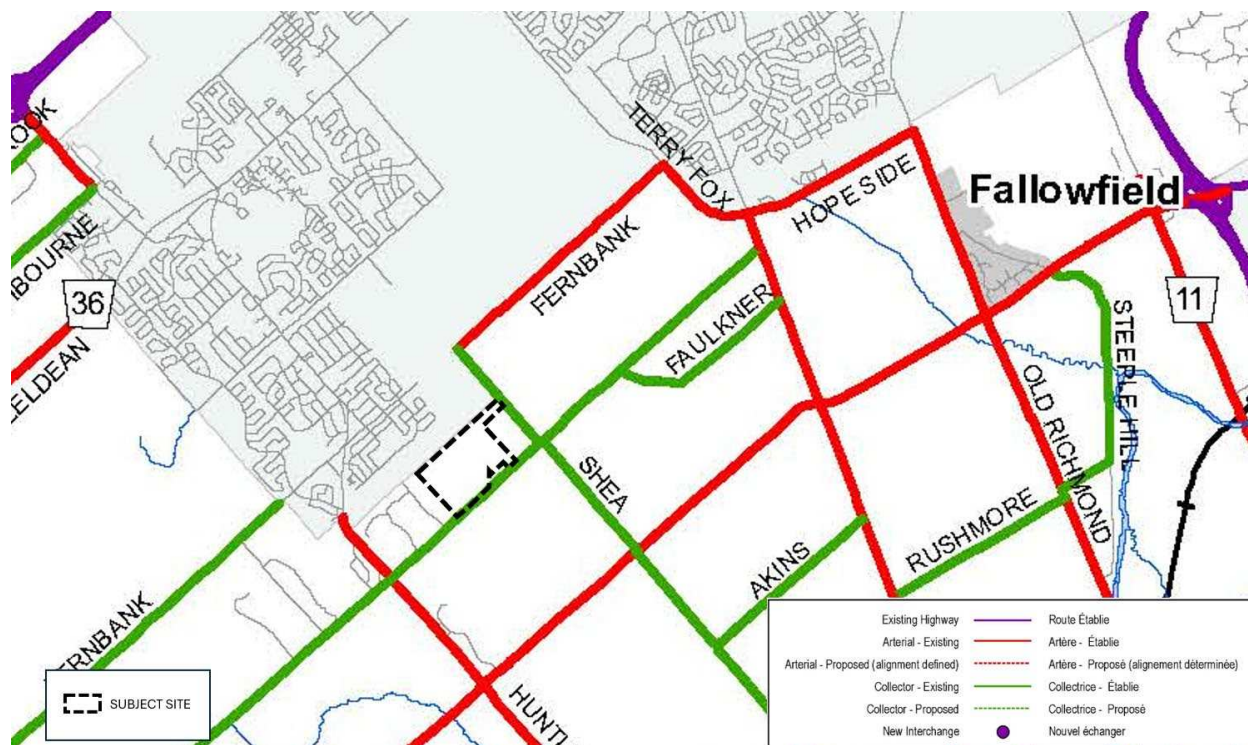


Figure 8 – Schedule C9 – Rural Road Network

5.0 Description of Proposal

The proposal has been conceived following a detailed consideration of the area context, the policy guidance contained by the Provincial Planning Statement (PPS), the City OP, City guideline documents, background studies from a variety of disciplines, and design principles used for similar development forms. The outcome of this evaluation is, in our opinion, a well-designed organization of the subject site which contains an appropriate mix of dwelling types and other uses.

Based on comments received from the City on the ZBA and DPS applications, a new Concept Plan was prepared and included as **Figure 9** addressing comments.

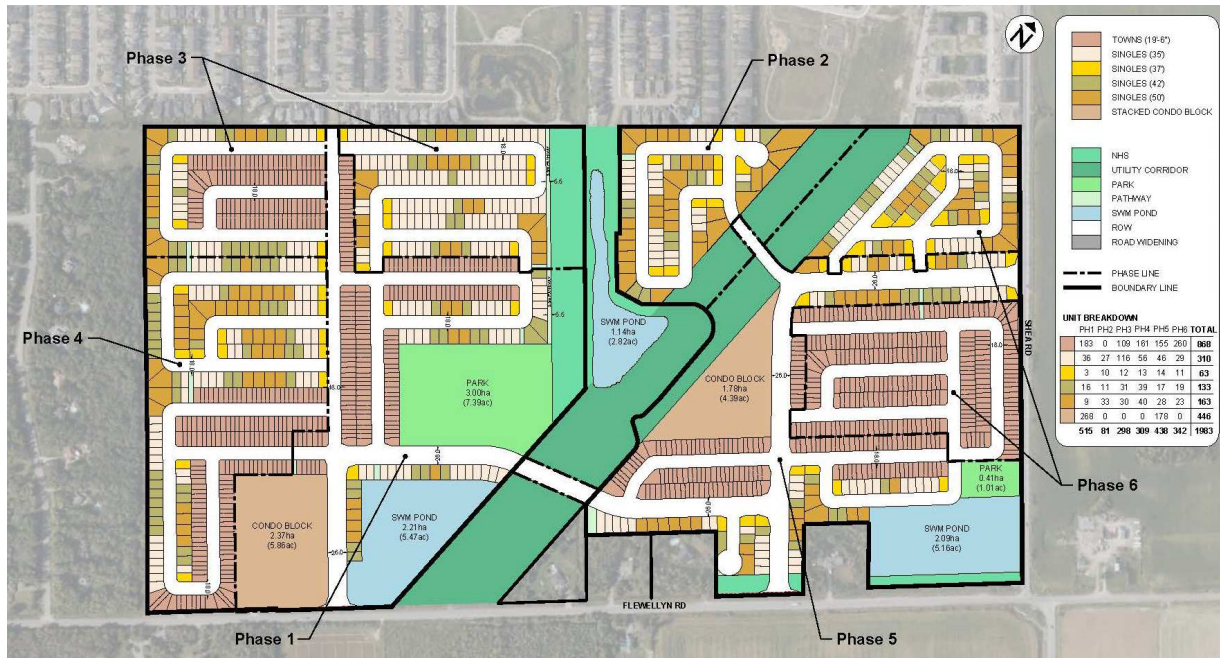


Figure 9 – Concept Plan

A revised Draft Plan is included as **Figure 10** of this Planning Report. The Draft Plan currently excludes the East Parcel given it is subject to a separate OPA application process to include it into the W-4 urban expansion area. All supporting studies have however included the East Parcel and the holdout parcels as part of their analysis.

Some of the notable statistics of the new proposal, excluding and including the East Parcel, are as follows:

Land Use	Proposal (excl. East Parcel)	Proposal and East Parcel
Single-Detached	563 units	669 units
Standard Townhomes	537 units	868 units
Stacked Townhomes	446 units	446 units
Total Dwellings	Approx. 1,546 units	Approx. 1,983 units
Parks	1 park block (3 ha or 7.39 ac)	2 park blocks (3.41 ha or 8.4 ac)
SWMF	2 new SWMF (3.89 ha or 9.63 ac)	3 new SWMF (5.98 ha or 14.79 ac)
Streets	20 streets <ul style="list-style-type: none"> • Collector Roads (24m) • Local Roads (18m) 	26 streets <ul style="list-style-type: none"> • Collector Roads (24m) • Local Roads (18m)
Walkways	7 pedestrian linkages	8 pedestrian linkages

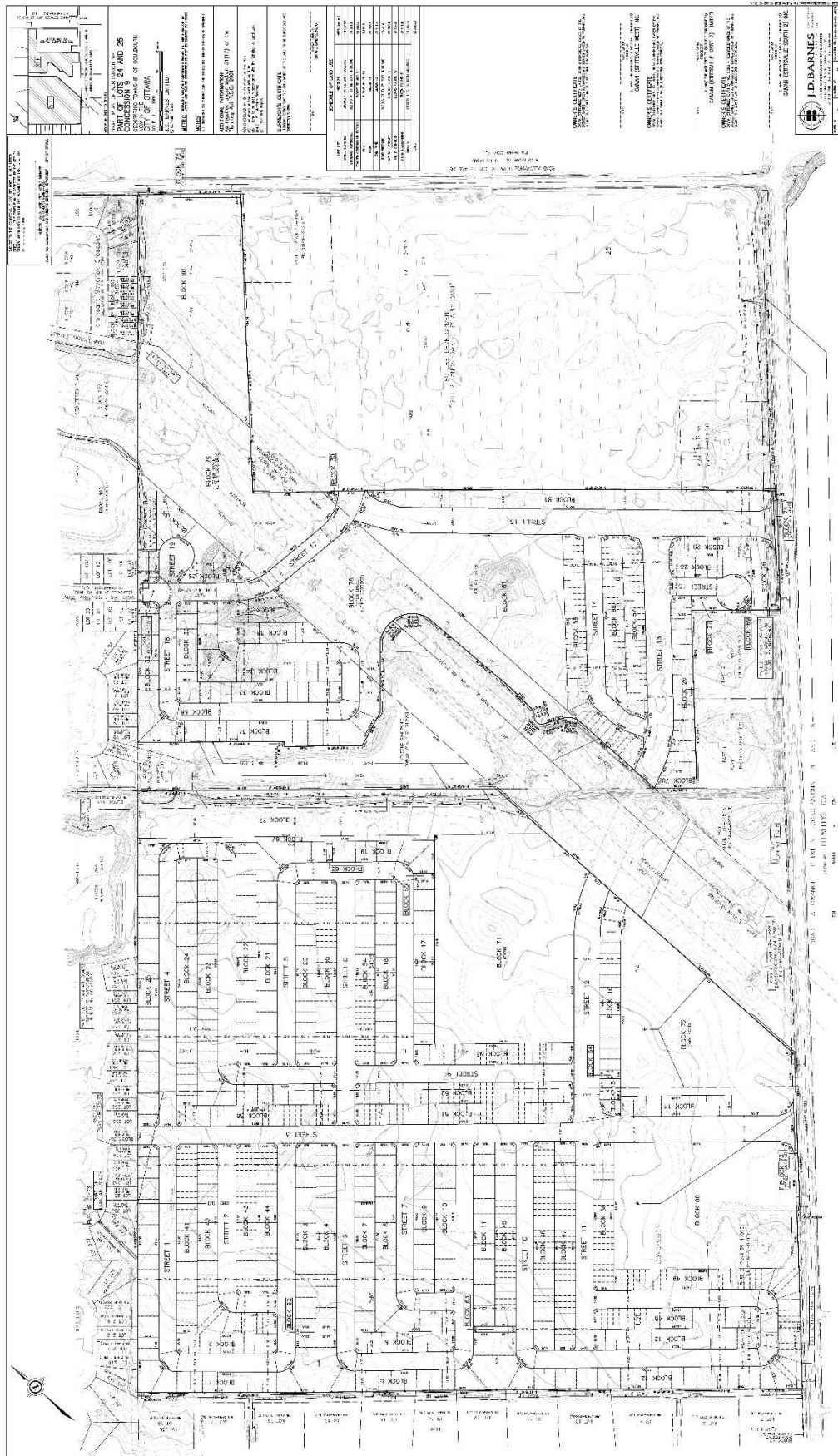


Figure 10 – Draft Plan of Subdivision

5.2 Built Form

The proposal will include primarily low to medium density forms through single detached homes and townhomes.

Corner lots and gateway entrances will have the highest visibility from the street and as such, will be designed with rear yard bump outs, additional windows and architectural articulation.

Select units within the proposal will feature Caivan's OpenPlan™ Design, which reduces the appearance of a garage and car-dominated streetscape, maximize windows and natural light on front and rear facades, and include finished basements.

5.3 Streets

Collector streets are designed at a Right-of-Way ("ROW") width of 24.0 m and local roads will be designed with a ROW of 18.0 m as shown on **Figure 10**. The proposed local roads will connect to the existing road network to the north. All housing typologies will front or flank onto the ROW adding dynamic interest along the streetscape.

On-street parking will be provided on all roads wherever possible to allow short-term parking for residents and visitors. Traffic-calming measures will be implemented to reduce speeds and will be appropriately dispersed throughout the proposed development to enhance safety. This is conceptually shown in the TIA prepared by CGH dated January 2026 and will be further refined at detailed design.

5.4 Parks and Open Space

The proposal will include one new public park, sited at the corner of two streets to enhance visibility. The park is located fronting onto the hydro corridor, acting as gateways into the open space network expanding on the use of the hydro corridor for recreational purposes. The park is centrally located to provide more convenient access to the surrounding neighbourhood. Multi-use paths are also proposed to connect through the parks and the broader community.

Key pathway blocks have been strategically located within the proposal to achieve permeability of long blocks and crescents, where needed, and provide sufficient connectivity to parks and stormwater management ponds.

As detailed in the Park Fit Plan prepared by NAK Design Strategies dated October 31, 2025, the proposed park will include a wide range of programming including a softball diamond, basketball and pickleball courts, a skate park and playground. These details will be further refined as the application progresses.

5.5 Commercial Use

The proposal contemplates including commercial uses at the northeast corner of the subject site within Block 80 of the Draft Plan. The owner is committing to provide a minimum of 1,000 sq.m. of commercial gross floor area to be located towards the Shea Road frontage. This will be implemented through the zoning instrument.

5.6 Applications Required to Implement the Proposal

As mentioned earlier, the approval of the OPA application for the removal of the Future Neighbourhoods Overlay was adopted by Council on September 25, 2025, redesignating the subject site and Holdout Parcel #1 (**Figure 1**) to Neighbourhoods. A separate application for the East Parcel was submitted on August 14, 2024 and resubmitted on October 8, 2024 to include the East Parcel into the W-4 urban expansion boundary. The collector roads through this parcel naturally support housing to allow for efficient development patterns and infrastructure. In accordance with the City's Growth Management Strategy, settlement area boundaries should be defined and based on logical boundary conditions such as existing roads or such other natural geographic features. Excluding the East Parcel from the urban area would create an undesirable rural enclave at the corner of a prominent intersection within the Stittsville South area and contiguous with, or lot line to lot line with, the urban growth area. As such, the East Parcel is proposed to be included as part of the W-4 urban expansion area.

The subject site is currently zoned Rural Countryside Zone (RU) and Open Space (O1) in the City of Ottawa Zoning By-law 2008-250. The by-law permits the following uses in the RU Zone:

- Agricultural use;
- Agricultural-related use;
- Animal care establishment;
- Animal hospital;
- Artist studio;
- Bed and breakfast;
- Cannabis Production Facility, limited to outdoor and greenhouse cultivation;
- Cemetery;
- Detached dwelling;
- Equestrian establishment;
- Environmental preserve and educational area;
- Forestry operation;
- Group home;
- Home-based business;
- Home-based day care;
- Kennel;
- On-farm diversified use;
- Retirement home, converted; and
- Additional dwelling unit.

The subject site is proposed to be developed with single detached units, townhomes and stacked townhomes at densities in keeping with the evolving character of the area. A ZBA amending By-law 2008-250 is required to support the proposal and is further detailed later in this report.

A DPS is also required to divide the lands into lots and blocks in accordance with the proposal which can then be conveyed or sold separately in the future.

6.0 Policy Context

The policy context that applies to the subject application is the Provincial Policy Statement, 2020 (the “PPS”), the Planning Act, and the City of Ottawa Official Plan. In addition, regard has been given to the Urban Design Guidelines for Greenfield Neighbourhoods (2007) and the Building Better and Smarter Suburbs (2015). These documents are reviewed in the sections below.

6.2 Planning Act

6.2.1 Section 2

Section 2 of the *Planning Act* indicates that municipalities shall have regard to the following matters of provincial interest, among other matters:

- “a) The protection of ecological systems, including natural areas, features and functions;
- b) The protection of the agricultural resources of the Province;
- f) The adequate provision and efficient use of communication, transportation, sewage and water services and waste management systems;
- h) The orderly development of safe and healthy communities;
- k) The adequate provision of a full range of housing, including affordable housing;
- p) The protection of public health and safety;
- q) The appropriate location of growth and development;
- r) The promotion of development that is designed to be sustainable, to support public transit and to be oriented to pedestrians;
- s) The promotion of built form that is
 - i) Well designed,
 - ii) Encourages a sense of place, and
 - iii) Provides for public spaces that are of high quality, safe, accessible, attractive and vibrant.”

The proposed development has had regard for those Provincial interests, germane to the subject proposal, as follows:

- The development will add a range of residential units to an area that is currently vacant and underutilized;
- The subject site is an appropriate location for growth and development, as it is a logical and sequential urban area expansion, adjacent to existing urban development; and
- The built form includes well-designed streetscapes that are accessible and attractive, and there is a generous quantity of high quality open space, contributing to a vibrant sense of place.

Further, the site-specific conditions of Draft Plan approval can be used to ensure that matters of provincial interest are addressed and secured (as appropriate) before development is permitted

to proceed. Therefore, through the application of the mechanisms provided for in the *Planning Act*, in my opinion, the implementation of development approvals for the lands can proceed in a manner provided for under the *Planning Act*.

In view of the forgoing, we conclude that the proposed development has appropriate regard for Section 2 of the *Planning Act*.

6.2.2 Parkland Dedication

The proposal includes one park with a total area of 7.39 ac (3.00 ha). Based on the estimated number of approximately 1,546 units for this proposed subdivision, excluding the East Parcel (separate application), the estimated parkland dedication requirement of 1 hectare per 600 units is approximately 2.58 ha. As such, the parkland dedication requirement has been met and will be commensurate to the final unit count.

6.2.3 Plan of Subdivision

Section 51(24) of the *Planning Act* provides that, in considering a draft plan of subdivision, regard shall be had, to the health, safety, convenience, accessibility for persons with disabilities and welfare of the present and future inhabitants of the municipality and to, the following (among other matters):

- “(a) the effect of development of the proposed subdivision on matters of provincial interest as referred to in section 2;
- (b) whether the proposed subdivision is premature or in the public interest;
- (c) whether the plan conforms to the official plan and adjacent plans of subdivision, if any;
- (d) the suitability of the land for the purposes for which it is to be subdivided;
- (f) the dimensions and shapes of the proposed lots;
- (g) the restrictions or proposed restrictions, if any, on the land proposed to be subdivided or the buildings and structures proposed to be erected on it and the restrictions, if any, on adjoining land;

- (h) conservation of natural resources and flood control;
- (i) the adequacy of utilities and municipal services;
- (j) the adequacy of school sites; and
- (k) the area of land, if any, within the proposed subdivision that, exclusive of highways, is to be conveyed or dedicated for public purposes.”

The proposal has appropriate regard to Section 51(24) of the *Planning Act*, as follows:

- The proposal has regard to Section 2 of the *Planning Act*, as detailed earlier in this report;
- The proposal is of public interest as it received high servicing and transit scores from the City in January 2021 and is within an approved urban expansion area meeting the City’s Growth Management Strategy. It is also located immediately south of an existing neighbourhood, Edenwyld that includes schools and parks;
- The proposal conforms with the City of Ottawa Official Plan as further detailed later in this report;
- Where necessary, mitigative measures will be included to minimize impacts onto natural resources as further detailed in the Environmental Impact Study prepared by Kilgour and Associates Ltd. This will be further refined at detailed design;
- Utilities and municipal services are adequately available as further detailed in the MSS prepared by DSEL.; and
- One park is proposed at an area of 35,142 sq.m. to be conveyed to the City.
- The mix of lots appropriately provide for a variety of housing options.

In view of the foregoing, it is my opinion that the proposed development has regard for the applicable matters set out in Section 51(24) of the *Planning Act*.

6.3 Provincial Planning Statement, 2024 (“PPS”)

The Provincial Planning Statement (the “PPS”) came into effect on October 20, 2024. The PPS is intended as a single, province-wide land use planning document. The stated intent of the Province is to speed up government approval processes and support the achievement of housing objectives across Ontario.

The PPS provides policy direction on matters of provincial interest related to land use planning and development. If approved, all planning matters would be required “to be consistent” with the New PPS pursuant to subsections 3(5) and 3(6) of the *Planning Act*.

In addition to policies applicable across the province, the PPS includes policies only applicable to *Large and fast-growing municipalities* which have the greatest need for housing, which includes the City of Ottawa, as identified in Schedule 1.

Subsection 2.1 of the PPS relates to Planning for People and Homes with the following relevant policies:

- “4. To provide for an appropriate range and mix of housing options and densities required to meet projected requirements of current and future residents of the regional market area, planning authorities shall:
 - a) maintain at all times the ability to accommodate residential growth for a minimum of 15 years through lands which are designated and available for residential development; and
 - b) maintain at all times where new development is to occur, land with servicing capacity sufficient to provide at least a three-year supply of residential units available through lands suitably zoned, including units in draft approved or registered plans.”

The following policies under section 2.2 are considered in the PPS with respect to Housing:

- “1. Planning authorities shall provide for an appropriate range and mix of housing options and densities to meet projected needs of current and future residents of the regional market area by:
 - a) establishing and implementing minimum targets for the provision of housing that is affordable to low and moderate income households, and coordinating land use planning and planning for housing with Service Managers to address the full range of housing options including affordable housing needs;

b) permitting and facilitating:

1. all housing options required to meet the social, health, economic and well-being requirements of current and future residents, including additional needs housing and needs arising from demographic changes and employment opportunities; and

c) promoting densities for new housing which efficiently use land, resources, infrastructure and public service facilities, and support the use of active transportation.”

As mentioned earlier, the proposal will provide an appropriate range and mix of housing options in the form of single-detached, standard townhouses and stacked townhouses. The proposal will also contribute to meeting minimum housing targets within designated growth areas. It will use land and infrastructure efficiently and support active transportation where possible.

In view of the forgoing analysis, it is my opinion that the proposed development is consistent with the PPS.

6.4 City of Ottawa Official Plan (“City OP”)

The City OP, as approved with modifications by the Minister, came into effect on November 4, 2022. The City OP outlines a comprehensive land use policy framework to guide growth and development within the City to the year 2046, including policies and schedules that address housing and growth management; long-term planning for employment and infrastructure; protect water resources, natural heritage, and agricultural areas; manage non-renewable resources; plan for climate change; and safeguard public health and safety.

Section 3 of the City OP provides the Growth Management Framework. The majority of residential growth is targeted within the built-up area with a high demand of housing expected for ground-oriented units, such as single-detached, semi-detached, rowhouse dwellings and new forms not yet developed.

As mentioned earlier, the subject site is now within the urban boundary and designated Neighbourhoods.

6.4.1 City-wide Policies

The City-wide policies are analyzed in relation to the proposal.

Mobility

Subsection 4.1 of the City OP contains city-wide policies as it relates to mobility. The following policies under subsection 4.1.1 are applicable to the subject site:

- “1) In the Urban area and Villages, people who walk, cycle and use transit shall, by default, be given priority for safety and movement. The resolution of overlapping priorities in the Urban area and Villages, as well as the establishment of priorities in the Rural area, will be informed by Multi-Modal Level of Service targets outlined in the Transportation Master Plan (TMP) and Multi-Modal Level of Service Guidelines.
- 5) New subdivision development shall connect to existing pedestrian, cycling, transit and street networks and provide for the potential future extension of these networks up to abutting property boundaries, including those lands beyond an existing Urban boundary or Village boundary.
- 3) The improvement of pedestrian and cycling networks shall be based on the TMP and associated plans, Multi-Modal Level of Service Guidelines (MMLoS), the Safe Systems Approach and all the following:
 - a) All new and reconstructed streets in the Urban area and Villages shall include pedestrian and cycling facilities appropriate for their context, as specified in the TMP and associated plans; and
 - b) Safe, direct and convenient pedestrian and cycling networks and crossings; including along desire lines where needed and appropriate.”

The proposal will include sidewalks along new collector and local roadways within the subdivision. Pathways are proposed along the Hydro corridor and stormwater management ponds to improve connectivity to the area parks and other parts of the neighbourhood. Cycletracks are expected to be along new collector roadways and cyclist crossings are proposed at major active mode crossing locations.

Housing

Section 4.2 of the City OP contains policies related to housing. The intent of these policies is to make Ottawa a good place to live. A place that is safe, affordable and meets the needs of all age

groups, incomes and backgrounds. A variety of housing types are encouraged including housing units of different sizes and forms, some of which may not yet be common in Ottawa today.

Subsection 4.2.1 include the following relevant policies:

- “1) A diverse range of flexible and context-sensitive housing options in all areas of the city shall be provided through the Zoning By-law, by:
 - b) Promoting diversity in unit sizes, densities and tenure options within neighbourhoods including diversity in bedroom count availability;
 - c) Permitting a range of housing options across all neighbourhoods to provide the widest possible range of price, occupancy arrangements and tenure;
 - d) Establishing development standards for residential uses, appropriately balancing the value to the public interest of new policies or development application requirements against the impacts to housing affordability; and
 - e) The City shall maintain, at all times, land with servicing capacity sufficient to provide at least a three year supply of residential units available through lands suitably zoned to facilitate intensification and land in draft approved and registered plans.
- 2) The City shall support the production of a missing middle housing range of mid-density, low-rise multi-unit housing, in order to support the evolution of healthy walkable 15-minute neighbourhoods by:
 - a) Allowing housing forms which are denser, small-scale, of generally three or more units per lot in appropriate locations, with lot configurations that depart from the traditional lot division and put the emphasis on the built form and the public realm, as-of-right within the Zoning By-law;
 - b) Allowing housing forms of eight or more units in appropriate locations as-of-right within the Zoning By-law; and
 - c) In appropriate locations allowing missing middle housing forms while prohibiting lower-density typologies near rapid-transit stations within the Zoning By-law.”

The proposal includes a full range of low-rise housing options in the form of single-detached, standard townhouses and stacked townhouses. The proposed development of stacked townhouse dwelling units supports missing middle housing options.

Parks and Recreation

Section 4.4 of the City OP relates to parks and recreation facilities. Parks are encouraged to be distributed throughout a neighbourhood, and across the City. The shape and size of a park should be designed to provide appropriate access and visibility within the context of the neighbourhood.

Subsection 4.4.1 provides the following relevant policies:

“2) All development, regardless of use, shall meet all of the following criteria to the satisfaction of the City:

- a) Consider land acquisition for parks as directed by the Parkland Dedication By-law to meet community needs for both residential and non-residential development, with an emphasis on active recreation amenities and potential cultural development with new parks acquired to address gaps or community needs; and
- b) Prioritize land for parks on-site over cash-in-lieu of parkland. Cash-in-lieu of parkland shall only be accepted when land or location is not suitable. The land to be conveyed shall, wherever feasible:
 - i) Be a minimum of 400 square metres or as described in the upcoming Land First Policy and updated Park Development Manual as directed by the Parks and Recreation Facilities Master Plan;
 - ii) Be free of encumbrances above and below ground when land for parks is obtained by parkland dedication; or in the case of land purchases for the creation of new parks in established areas, unless the encumbrances have been approved by the City where reasonable;
 - iii) Be of a usable shape, topography and size that reflects its intended use
 - iv) Meet applicable provincial soil regulations; and
 - v) Meet the minimum standards for drainage, grading and general condition.”

The proposal includes one new park of 7.39 ac (3.00 ha), exceeding the City’s minimum area requirement, to be conveyed to the City of Ottawa. The proposed park is free of any encumbrances above and below ground. The park will be of usable shape and topography for a wide range of uses. These uses are conceptually shown on the Park Fit Plan, dated January 6, 2025, as prepared by NAK Design Strategies, included as part of the submission.

The proposed park will be designed to meet minimum drainage, grading and general condition standards in accordance with Ministry of the Environment, Conservation and Parks (“MECP”) and City of Ottawa guidelines as part of detailed design.

Section 4.4.1 continues with the following policies with respect to the rate of parkland dedication.

- “4) The Parkland Dedication By-law, or any successor by-law, shall include provisions for the rate of parkland dedication. As per the *Planning Act* the following rates apply at the time of adoption of this Plan:
- b) The City shall require the dedication of land for parks in an amount not exceeding 5 per cent of the area of land that is developed or redeveloped for all other purposes except that the City will calculate the park dedication for residential development or redevelopment at densities that exceed 18 units per net hectare using the ‘alternative requirement’ of 1 hectare for every 300 dwelling units as provided in the *Planning Act* or some lesser amount based upon this requirement. The Parkland Dedication By-law will identify circumstances when a lesser amount will be considered;
 - c) In the case of land that is developed or redeveloped for more than one purpose, the owner shall be required to convey land at the rate applicable to the predominant proposed use of the land for the entire site.”

As mentioned earlier in this report, recent Provincial legislation have revised the requirements for parkland dedication in Ontario. The proposal includes one larger park meeting and exceeding the parkland dedication requirement.

Section 4.4.4 provides the following relevant policies with respect to larger parks within Outer Urban and Suburban transects:

- “1 For areas with a Future Neighbourhood Overlay and in the Outer Urban and Suburban transects, the City has the following preferences:
- a) Larger park properties that offer the widest range of activity spaces, such as sports fields are preferred; ...
 - c) For greater land efficiency, the co-location of parks with housing components, schools and other institutions or stormwater management facilities, may be considered in the planning of such parks; ...”

The proposal includes a large park that is sized to accommodate a wide range of activity and programming including a softball diamond, basketball and pickleball courts, a skateboard park

and playground with splash pad. The proposed park is co-located with the hydro corridor and stormwater management facility, where possible meeting the above policies.

Section 4.4.6 includes the following relevant policies with respect to how the design of parks contribute to quality of life and respond to climate change:

- “1. The design of parks should generally meet each of the following criteria:
 - a) The emphasis on parks will be to provide space for recreational activities;...
 - e) A preferred minimum of 50 per cent of the park perimeter shall be continuous frontage on abutting streets; Sidewalks shall be provided along the entirety of a park’s street frontages in all cases in all transects, and required on local roads that lead directly to parks;
 - f) Where possible, landscape, servicing study and concept plans shall preserve existing mature trees and incorporate additional tree cover in a manner that is consistent with the use of the park and prioritizes shade for users. The tree canopy cover target for parks is 40 per cent, as detailed in Subsection 4.8.2, Policy 2), to be implemented, as appropriate;
 - g) New park space should be co-located with an existing or proposed park or another element of urban or rural greenspace, where possible; and
 - h) To adapt to climate change, provide cooling amenities in park design such as splash pads, wading pools, shade trees and shade structures, where possible.”

As mentioned earlier, the proposed park is to be co-located adjacent to existing open spaces. It also includes a frontage along a street with a sidewalk generally addressing policy 1. e) above. The proposed park will include a wide range of programming which will be further refined as the application progresses. The park will also include shade trees and shade structures meeting required canopy targets.

Urban Design

Section 4.6 of the Official Plan contains policies related to Urban Design. The policies in this section seek to achieve the following:

1. Promote design excellence in Design Priority Areas;
2. Protect views and enhance Scenic Routes including those associated with national symbols;

3. Ensure capital investments enhance the City's streets, sidewalks and other public spaces supporting a healthy lifestyle;
4. Encourage innovative design practices and technologies in site planning and building design;
5. Ensure effective site planning that supports the objectives of Corridors, Hubs, Neighbourhoods and the character of our villages and rural landscapes; and
6. Enable the sensitive integration of new development of Low-rise, Mid-rise and High-rise buildings to ensure Ottawa meets its intensification targets while considering liveability for all.

Subsection 4.6.6 relates to enabling the sensitive integration of new development of Low-rise, Mid-rise and High-rise buildings to ensure Ottawa meets its intensification targets while considering liveability for all.

The relevant policy of this section is as follows:

- “6) Low-rise buildings shall be designed to respond to context, and transect area policies, and shall include areas for soft landscaping, main entrances at-grade, front porches or balconies, where appropriate. Buildings shall integrate architecturally to complement the surrounding context.”

The proposal will demonstrate Caivan’s unique architectural character but will also reflect similar arrangements found within the surrounding communities. The proposed development will incorporate high-quality building materials that will harmoniously fit with the surrounding community. A variety of residential typologies and styles will be provided to create visual interest with homes located close to the property line, addressing the street, while making room for trees and utilities, where necessary. This is further detailed in the Urban Design Brief prepared by NAK Design Strategies, submitted under separate cover.

Drinking Water, Wastewater and Stormwater

Section 4.7 of the Official Plan contains policies related to Drinking Water, Wastewater and Stormwater Infrastructure which seek to achieve the following:

1. Provide adequate, cost-effective drinking water, wastewater and stormwater infrastructure, and assist in meeting growth targets in the urban area; an

2. Pursue an affordable and sustainable pattern of infrastructure development.

Subsection 4.7.1 provides the following relevant policies:

- “1) To protect, improve or restore the quality and quantity of water in any receiving watercourse, development shall:
 - a) Conform to approved servicing plans including the Infrastructure Master Plan, the Strategic Asset Management Plan, the Wet Weather Infrastructure Master Plan, subwatershed studies or environmental management plans, approved master servicing studies and applicable local servicing studies; and
 - b) Not exceed the capacity of the existing infrastructure system.
- 2) The City will require that infrastructure is durable, adaptive and resilient to the current climate and future climate, including extreme weather events.
- 5) Stormwater management to support development shall be appropriate to the urban or rural context as defined by transect areas and each of the following:
 - a) The requirements of approved subwatershed studies, environmental management plans and master servicing study;
 - b) Other relevant Council-approved studies, such as stormwater retrofit studies; and
 - c) The Ottawa Sewer Design Guidelines and associated climate change considerations.
- 6) As part of a complete application, all redevelopment applications will be required to:
 - a) Identify and mitigate the impacts of additional runoff resulting from increased imperviousness through measures such as site-specific stormwater management; and
 - b) Implement site, grading, building and servicing design measures to protect new development from urban flooding.
- 7) As part of a complete application, new applications for a plan of subdivision or condominium must demonstrate, to the satisfaction of the City and based on requirements identified in the Infrastructure Master Plan, that a legal and sufficient outlet can be established to support the proposed development.
- 8) As a condition of Site Plan Control approval or draft plan of subdivision approval, proof of legal and sufficient outlet for proposed stormwater management and drainage systems will be required and satisfied prior to the early servicing or registration, whichever comes first.

- 12) As part of a complete application, new development in a future neighbourhood shall be supported by an approved master servicing study, an approved environmental management plan, and subwatershed study. The scope of these studies shall include all contiguous future development lands unless otherwise approved by the City.
- 14) Unless identified in the Infrastructure Master Plan, stormwater and wastewater infrastructure to support new development (such as stormwater management systems and sewer pumping stations) will be within the settlement area.
 - a) Where necessary, and subject to an amendment to this plan, adjustments to the settlement boundary may be permitted to accommodate necessary infrastructure provided there would be no net increase in land within the settlement area; and
 - b) Under extraordinary circumstances and where settlement boundary adjustments are not possible, exceptions may be granted outside of agricultural resource areas or natural environment areas subject to Council approval of a local plan and supporting studies.
- 20) Master servicing studies shall address phasing of new infrastructure to support new development proceeding contiguous to existing urban development.
- 23) Applications for new development will demonstrate, to the City's satisfaction, that adequate services are available and can be allocated to support the proposal:
 - a) Where adequate services do not exist or cannot yet be provided to support a development, the City may use holding provisions in accordance with Zoning By-law to regulate the timing of development; and
 - b) Where adequate services or servicing capacity do not exist to support a proposed plan of subdivision, the City will not issue draft plan approval."

The MSS dated April 2025 prepared by DSEL concludes that downstream receiving watercourses has been assessed for responses to planned stormwater management outflows, and stabilization mitigation measures will be planned as required.

With respect to Section 4.7.1 Policy 2), the MSS includes the City of Ottawa's climate change stress test (100-year 3-hour Chicago storm plus 20%) to confirm that no basement flooding and no unacceptable flooding is expected from the proposal.

The MSS has drawn from the requirements of relevant subwatershed studies and the Ottawa Sewer Design Guidelines with respect to stormwater management in accordance with Section 4.7.1 Policy 5).

With respect to runoff, the MSS provides that stormwater runoff is designed to be captured by an internal gravity sewer system that will convey flows to multiple outlet locations. The report concludes that the gravity storm connections are feasible.

City staff confirmed at a meeting on September 12, 2024 that a legal and sufficient outlet can be established by stating in the Drainage Act amendment process that the Faulkner Drain can proceed in parallel with the development review process and can be addressed in Draft Plan conditions, as required. The appointment of a Drainage Engineer to prepare a report that addresses the change in land use within the Faulkner Drain and determine the drain's existing downstream capacity to accommodate additional volume was approved at the Agriculture and Rural Affairs Committee on October 3, 2024. The decision was subsequently adopted by Council on October 16, 2024. As such, addressing Section 4.7.1 Policy 7).

With respect to the required stormwater management (SWM) ponds for the subject development, two (2) new SWM ponds are proposed. One is located towards the south side of the subject site immediately west of the Hydro Corridor and the second is located at the southeast corner of the East Parcel which will serve the eastern portion of the subject site. This facility is currently located outside of the settlement boundary within the East Parcel. As mentioned earlier, the East Parcel is undergoing a separate application. To address Policy 14) above, the MSS includes an analysis of all potential options for the SWM pond design for the subject site and East Parcel. The MSS concludes that given the existing site topography and constraints including the Faulkner Municipal Drain and tributary drain the current proposed SWM pond design is the preferred alternative. It is consistent with the existing site topography and would minimize new stormwater facility and channel construction, and utilizes capacity in the existing Davidson Pond. In a meeting with City staff on February 8, 2024, staff agreed that this was the most logical servicing strategy pending the above analysis.

The MSS includes consideration of the proposed phasing of new infrastructure for further discussion and coordination with City staff.

With respect to serviceability as mentioned earlier, the subject site is deemed serviceable, as concluded in the MSS prepared by DSEL.

The FSR dated January 2026 prepared by DSEL further concludes that sufficient potable water is available to support the development to the north and that there are available water supply connection locations to support the development. A schedule of upgrades will be provided for the Shea Road Sanitary Pump Station to address the wastewater contribution contemplated to the downstream sewers. The proposed stormwater management system is contemplated to utilize existing outlets central and southeast of the development. Runoff within the development is proposed to be controlled to pre-development levels and adhere to City of Ottawa requirements.

The City's Linear Infrastructure group raised a concern regarding the sanitary servicing capacity of the Shea Road Sanitary Pump Station. It was confirmed that the pump station has adequate capacity to support the buildout of several phases of the proposal, namely Phases 1-5. Phase 5, the last phase, is located on the east side of the hydro corridor and may require sanitary pump station upgrades. The City's Linear Infrastructure group has \$7M in funding in the 2026 budget for the identified sanitary upgrades. There is low risk associated with the timing of these upgrades however to provide further certainty and alignment with Policy 4.7.1(23)(a) of the City Official Plan, a holding provision within the Zoning By-law is used to regulate timing of the development of Phase 5.

Natural Heritage

Section 4.8 of the Official Plan contains policies related to Natural Heritage, Greenspace and the Urban Forest which seek to achieve the following:

1. Protect the City's natural environment through identification of a Natural Heritage System, Natural Heritage Features and related policies.
2. Provide residents with equitable access to an urban forest canopy.
3. Provide residents with equitable access to an inclusive Urban Greenspace network.

Subsection 4.8.2 provides the following relevant policies with respect to equitable access to urban forest canopy:

- “3) Growth, development and intensification shall maintain the urban forest canopy and its ecosystem services, in accordance with Subsection 4.8.2, Policy 6) and the following:
- a) Preserve and provide space for mature, healthy trees on private and public property, including the provision of adequate volumes of high-quality soil as recommended by a Landscape Architect;
 - b) On urban properties subject to site plan control or community planning permits, development shall create tree planting areas within the site and in the adjacent boulevard, as applicable, that meet the soil volume requirements in any applicable City standards or best management practices or in accordance with the recommendation of a Landscape Architect;
 - c) Planning and development decisions, including Committee of Adjustment decisions, shall have regard for short-term, long-term and cumulative impacts on the urban forest at the neighbourhood and urban-wide scale;
 - d) When considering impacts on individual trees, planning and development decisions, including Committee of Adjustment decisions, shall give priority to the retention and protection of large, healthy trees over replacement plantings and compensation; and
 - e) Planning and development review processes shall support the goals and effective implementation of the Tree Protection By-law, including early consideration of trees in application and business processes.
- 6) When considering impacts on the urban forest and trees, approvals and Tree Permits shall not be denied for development that conforms to the Zoning By-law or for Zoning By-law amendments, variances and consents that conform to the Official Plan. Council or the Committee of Adjustment may refuse a planning application if it fails to provide space and adequate volume of soil for existing and/or new tree(s). Approvals granted by Council or Committee of Adjustment may include conditions to support tree protection, removal and replanting. The City and the Committee of Adjustment may refuse a development application where it deems the loss of a tree(s) avoidable. This policy shall also apply to a community planning permit approved through delegated authority or Council.”

The subject site will require removal of site trees to accommodate site grading and development. A Tree Conservation Report prepared on October 23, 2025 by Kilgour & Associates Ltd., provides that the overall canopy cover on the subject site would likely be reduced from 40% to 32% (not considering park blocks). The existing trees within the forested areas on the western half of the subject site will be retained to the highest extent possible. The proposal will result in the replacement of forested areas (>95% canopy) and will result in a significantly more evenly distributed canopy cover across the subject site.

6.4.2 Transects

Section 5.4.4 provides direction for new development in the Suburban Transect.

Section 5.4.4, Policy 2) provides:

“Net residential densities shall strive to approach the densities of the Inner Urban Transect over time, but residential development within the Urban Greenfield Area as shown on Figure 6 and urban expansion areas subject to any of the Future Neighbourhood Overlays as shown on Schedule C17 - Urban Expansion Areas, shall plan for a minimum density of 36 units per net hectare and permit density increases through intensification and accessory dwelling units.”

The subject site excluding undevelopable lands such as roads, vistas, parks and open spaces will have a net area of approximately 29.1 hectares. The proposal of 1,566 units will provide a net density of approximately 53.8 units per hectare. This calculation excludes the future condo block and the East Parcel which will further increase the density further meeting and exceeding the minimum density of 36 units per net hectare.

6.4.3 Urban Designations

As mentioned earlier, the subject site is now designated Neighbourhoods. Section 6.3 provides that:

“Neighbourhoods are contiguous urban areas that constitute the heart of communities. It is the intent of this Plan that they, along with hubs and corridors, permit a mix of building forms and densities.

Neighbourhoods are not all at the same stage of development, maturity and evolution. It is the intent of this Plan to reinforce those that have all elements of, and presently function as, 15-minute neighbourhoods; to guide those that have a few missing elements into gaining them; and to seed the conditions for future 15-minute neighbourhoods into those that currently are not. Neighbourhoods are planned for ongoing gradual, integrated, sustainable and context-sensitive development, or where an Overlay directs evolution, for gradual well-planned transformation.”

Neighbourhood policies seek to achieve the following:

1. Define neighbourhoods and set the stage for their function and change over the life of this Plan;

2. Guide the evolution of neighbourhoods based on their context, location, age, maturity and needs, generally towards the model of 15-minute neighbourhoods; and
3. Ensure that neighbourhoods form the cornerstone of liveability in Ottawa.

Section 6.3.1 provides that:

- “2. Permitted building heights in Neighbourhoods shall be Low-rise, except:
 - a. Where existing zoning or secondary plans allow for greater building heights; or
 - b. In areas already characterized by taller buildings.
3. Development in the Neighbourhood designation which seeks additional height beyond 4 storeys:
 - a. May be evaluated through a Zoning By-law amendment, without the need to amend this Plan, in cases that fall under the provisions of Subsection 6.3.1 Policy 2) but where the zoning does not provide corresponding permissions; and;
 - b. In all other cases, require an area-specific policy through an amendment to this Plan.”

As mentioned earlier in this report, the proposal consists of low-rise housing development and does not exceed 4 storeys.

Section 6.3.1 further provides the following policies:

- “4. The Zoning By-law and approvals under the *Planning Act* shall allow a range of residential and non-residential built forms within the Neighbourhood designation, including:
 - a. Generally, a full range of Low-rise housing options sufficient to meet or exceed the goals of Table 2 and Table 3b;
 - b. Housing options with the predominant new building form being missing middle housing, which meet the intent of Subsection 6.3.2, Policy 1);
 - e. Limited large-scale non-residential uses and include office-based employment, greenspace, large-scale institutions and facilities and other smaller institutional functions; and
 - f. Parks, open spaces and linkage areas meant to serve as public space.
5. The Zoning By-law will distribute permitted densities in the Neighbourhood by:

- a. Allowing higher densities and permitted heights, including predominantly apartment and shared accommodation forms, in areas closer to, but not limited to, rapid-transit stations, Corridors and major neighbourhood amenities;
- b. Allowing lower densities and predominantly ground-oriented dwelling forms further away from rapid-transit stations, Corridors and major neighbourhood amenities; and
- c. Provide for a gradation and transition in permitted densities and mix of housing types between the areas described in a) and b).”

Table 2 of the City OP sets a residential intensification target for ground-oriented/large-household dwellings to 49,000 dwellings. As mentioned earlier, the subject proposal is also required to meet a minimum density of 36 units per net hectare. The proposal contributes to meeting and exceeding these intensification targets while providing a full range of low-rise housing options in the form of single-detached, standard townhouses, and stacked townhouses. The proposed development supports missing middle housing options.

Subsection 6.3.1 further provides:

- “9) Where lots within residential neighbourhoods have through-lot access fronting onto two public rights of way, the Zoning By-law and approvals under the *Planning Act* shall allow development that establishes separate residential use buildings so as, on separate lots to allow for independent services, to front on both public rights of way while leaving a portion of the internal lot without buildings or structures. The intent of this policy is to frame the public right of way with buildings and structures and to prohibit development that turns its back to a public right of way.”

The proposal provides a layout in which all residential use buildings front onto a public right of way. There are no residential lots that back onto a public right of way.

In view of the analysis set out above, it is our opinion that the proposed redevelopment is in conformity with the City OP.

7.0 Proposed Zoning By-law Amendment

The proposed zoning shall reflect the proposed mixed use, residential and open space uses per **Figure 11**.

Proposed single detached and townhome dwellings will be zoned R3YY[XXXX]. The stacked townhouse development blocks will be zoned R4Z[XXXX] and the mixed-use block will be zoned GM(H).

The proposed parks and open spaces will be zoned Open Space (O1), consistent with other local parks, community parks and natural areas.

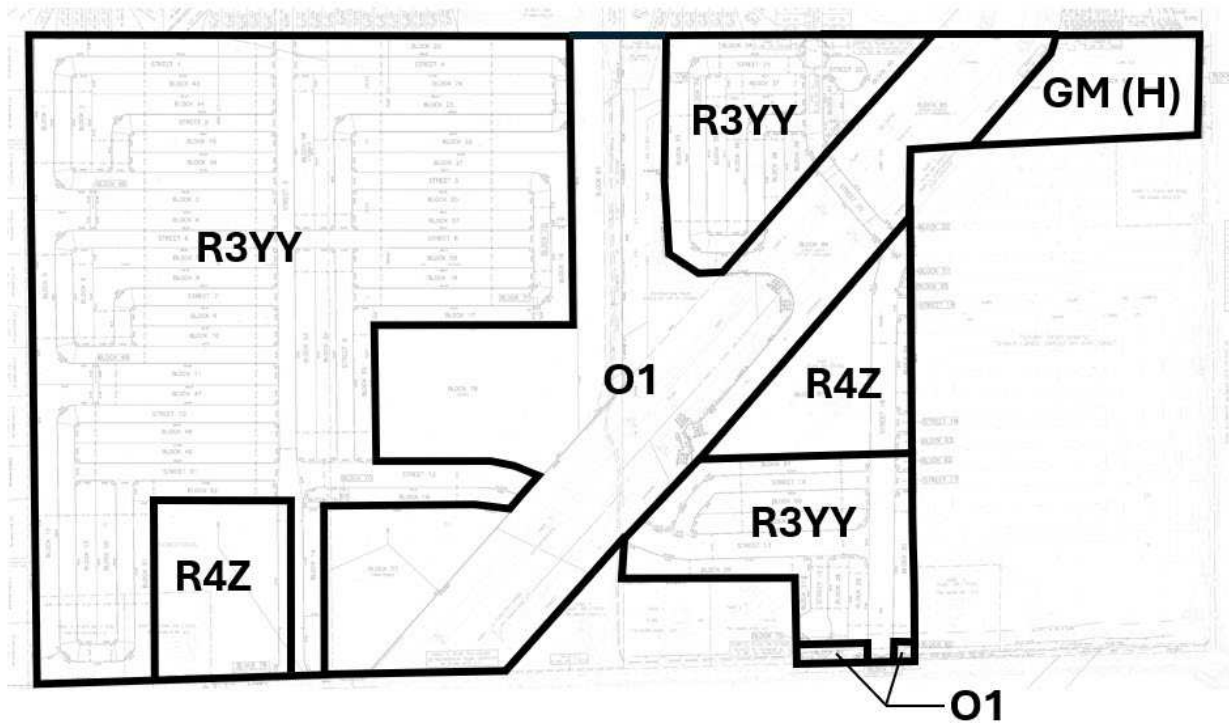


Figure 11 – Draft Proposed Zoning

The proposed draft zoning provisions for the residential zones are as follows:

Add a new exception xxx to Section 239 – Urban Exceptions with provisions similar in effect to the following:

- a) In Column I, Exception Number, add the text “[xxxx]”

b) In Column II, Applicable Zones add the text "R3YY[xxxx]":

- A maximum of 65 per cent of the area of the front yard, or the required minimum width of one parking space, whichever is the greater, may be used for a driveway, and the remainder of the yard, except for areas occupied by projections permitted under Section 65 and a walkway with a maximum width of 1.8 metres, must be landscaped with soft landscaping.
- Where an attached garage accesses a public street by means of a driveway that crosses a sidewalk, the attached garage must be setback at least 5.2 m from the nearest edge of the sidewalk.
- Despite Table 65, rows 1-3, chimney, chimney box, fireplace box, eaves, eaves-troughs, gutters, and ornamental elements such as sills, belts, cornices, parapets and pilasters may project 1 metre into required interior side yard but no closer than 0.2 metres to the lot line.
- Despite Table 65, row 6b, balconies and porches may project to within 0 metres of a corner lot line and sight triangle.
- Despite Table 65, row 6b, the steps of a porch may project 2.5 metres into a required yard but may be no closer than 0.5 metres from a lot line other than a corner side lot line and sight triangle, from which they can be as close as 0 metres.
- Despite Table 65, row 6a, any portion of a deck with a walking surface higher than 0.3 metres but no higher than 0.6 metres above adjacent grade may project to within 0.6 metres of a lot line, and any portion of a deck with a walking surface equal to or less than 0.3 metres may project to within 0.3 metres of a lot line.
- Despite Table 65, row 8, an air-conditioning condenser unit may project 1 metre, but no closer than 0.2 metres to a lot line. And the air conditioning condenser may not be located in a front yard (including front yard balcony).
- In the case of a home-based business operating within a townhouse or semi-detached dwelling, a parking space is only required if a non-resident employee works on-site.
- Section 136 does not apply.

The following applies to detached dwellings:

- Minimum lot area: 220 square metres

- Minimum front yard setback: 3 m
- Minimum total interior side yard setback is 1.8 metres with a minimum of 0.6 metres on at least one side. Where there is a corner lot on which is located only one interior side yard, the minimum required interior side yard setback equals the minimum required for at least one yard.
- Minimum corner side yard setback: 2.5 metres, despite the foregoing, no more than two portions of the building, not exceeding a total floor area of 3 square metres, may be located no closer than 2 metres from the side lot line abutting a street.
- Maximum lot coverage: 55%
- Minimum rear yard setback may be reduced to 4.5 metres for a maximum of 50 per cent of the lot width, the total area of the contiguous rear and interior yards must not be less than 54 square metres.
- For a detached dwelling on a corner lot:
 - a. Minimum rear yard setback may be reduced to 2.5 metres for part of the building that is no higher than 4.5 metres and any part of the building, excluding projections, located less than 6 metres from the rear lot line must be located at least 4 metres from any interior side lot line.

The following applies to semi-detached and townhouse dwellings:

- Minimum lot area: 120 square metres
- Minimum rear yard setback: May be reduced to a minimum of 4.5 metres for a maximum of 55% of the lot width, the total area of the contiguous rear and interior yards not be less than 30 square metres.
- Minimum lot width: 5.5 metres
- Minimum front yard setback: 3.0 metres
- Minimum interior side yard setback: 1.5 metres
- Minimum corner side yard setback: 2.5 meters

- Maximum building height: 14 metres
- Maximum lot coverage: 66%

Add a new exception XXXX to Section 239 – Urban Exceptions with provisions similar in effect to the following:

c) In Column I, Exception Number, add the text “[yyyy]”

d) In Column II, Applicable Zones add the text “R4Z[yyyy]”:

- Minimum front yard setback: 3 metres
- Minimum corner side yard setback: 3 metres
- Minimum rear yard setback: 3 metres
- Minimum interior side yard setback: 3 metres
- Minimum parking for residents: 0.98 per unit
- Minimum parking for visitors: 0.1 per unit
- Minimum landscape buffer: 2.1 m
- Section 136 does not apply.

Add a new exception XXXX to Section 239 – Urban Exceptions with provisions similar in effect to the following:

c) In Column I, Exception Number, add the text “[zzzz]”

d) In Column II, Applicable Zones add the text “GM(H)[zzzz]”:

- A minimum of 1,000 square metres of non-residential gross floor area is required within the GM zone;

- The same provisions of the R3YY[xxxx] zone apply to the detached, semi-detached and townhouse dwellings within the GM zone.

Holding Symbol Provision:

- A. The lands zoned with the holding symbol “(H)” on Figure 11 must not be used for any purpose other than those uses existing as of the date of the passing of this by-law, until the holding symbol “(H)” has been removed.
- B. An amending by-law to remove the holding symbol “(H)” above may be enacted when the following condition has been fulfilled:
 - i. the Owner has demonstrated to the satisfaction of the General Manager, Planning, Real Estate and Economic Development, that the proposed gross floor area and development concept are acceptable and that adequate servicing and supporting studies have been provided.

8.0 Relevant Guidelines and Other Considerations

Urban Design Guidelines for Greenfield Neighbourhoods (2007)

Design Guidelines for Greenfield Neighbourhoods illustrate the City’s expectations for greenfield neighbourhoods and are to be considered through the processing of plans of subdivision. The following principles have been incorporated into the proposal:

- Establishing a connected network of parks and greenspaces;
- Providing appropriate collector and local road connections to adjacent developments to complete the road network;
- Providing appropriately scaled block sizes that enhance pedestrian access;
- Centrally locating the park so that it is conveniently located to be accessible to the majority of residents;
- Locating the park along a street frontage or other open space, where possible; and,
- Incorporating a high standard of urban design and architectural design in the built-form.

Building Better and Smarter Suburbs (2015)

While the recommendations of Building Better and Smarter Suburbs are related to Community Plans and not individual subdivision plans, the following principles have been incorporated into the proposal:

- Inclusion of a grid-like street network that aligns with existing street networks and supports active transportation through inclusion of pedestrian and cycling paths that connects with existing and proposed open space and park facilities;
- Implementation of traffic calming measures, where appropriate;
- Advancement of appropriate-scaled local and collector roads;
- Avoidance of reverse frontage lots, where possible;
- Provision of a park that address the City's park size and design criteria; and
- Appropriate on-site and street parking opportunities.

9.0 Overall Conclusions

As detailed throughout this Planning Report, we are satisfied that the proposal is supportable and appropriate for approval, for the following reasons:

- The proposal has regard to matters of Provincial interest and has had appropriate regard to the items in Section 51(24) of the *Planning Act*;
- The proposal is consistent with the PPS;
- The proposal conforms to, and implements, the policies of the City OP;
- The proposal will realize urban residential development within an area where growth can be accommodated and contributes to the completion of the Stittsville South community;
- The proposal promotes efficient, cost-effective development and land use pattern;
- The proposal is supportive of, and accessible to, the City's multi-modal network for the Stittsville South community;
- The development resulting from the proposal can be adequately serviced by extensions of the existing municipal infrastructure;

- A variety of low-rise residential dwellings in the form of single detached and various forms of townhouse vernacular will be provided; and
- A balanced distribution of open space and parkland will be provided.

Therefore, it is our opinion that the proposal is premised on sound and reasonable planning analysis, represents good planning, and is in the public interest. For these reasons, I recommend that the DPS and ZBLA applications be supported by City staff and approved by City Council.

Respectfully,



Michael S. Goldberg, RPP, MCIP
Principal, Goldberg Group