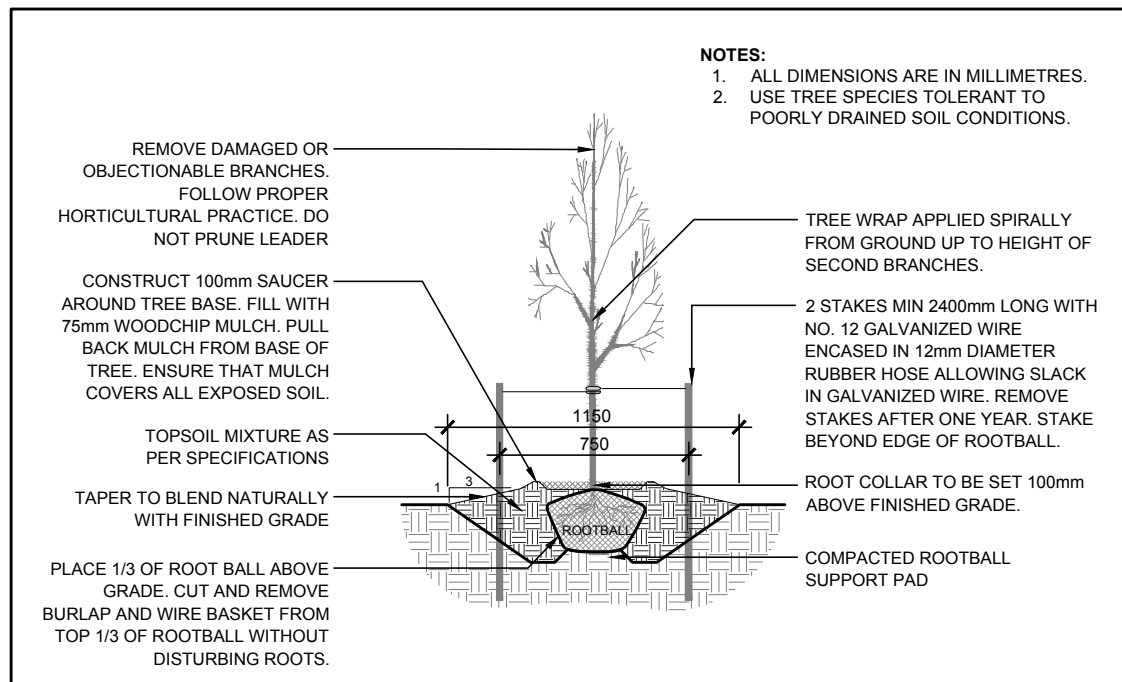
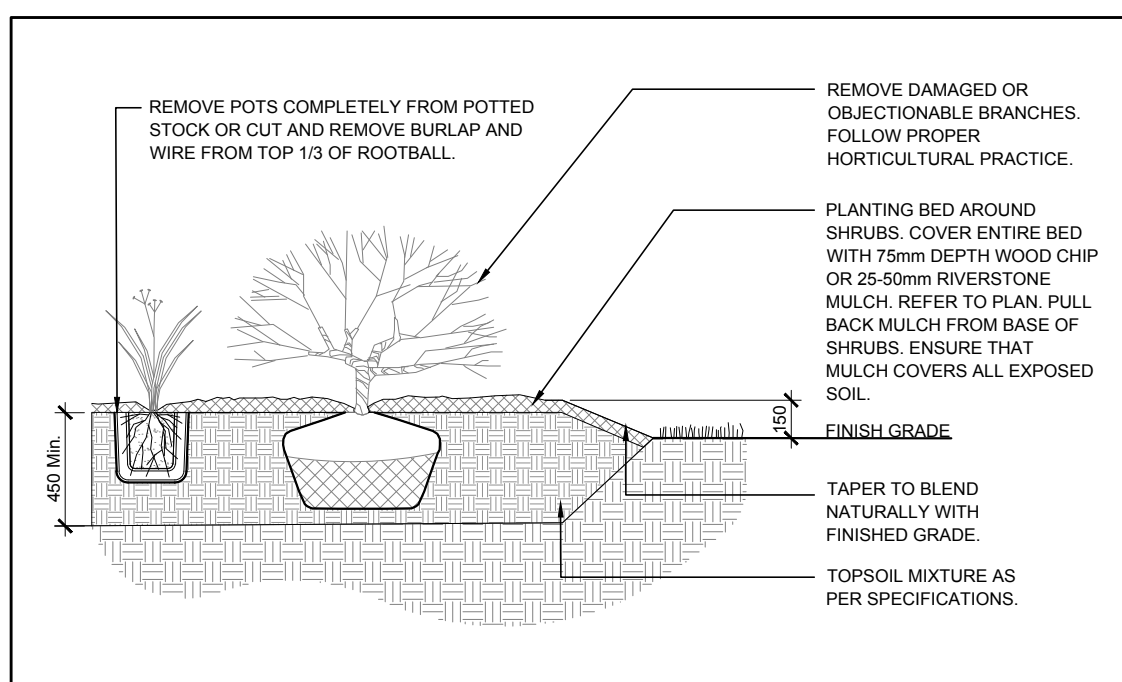


1 TREE CONSERVATION REPORT & LANDSCAPE PLAN
L.1 SCALE 1:200



2 DECIDUOUS TREE PLANTING
L.1 SCALE NTS



3 SHRUB/PERENNIAL PLANTING
L.1 SCALE NTS

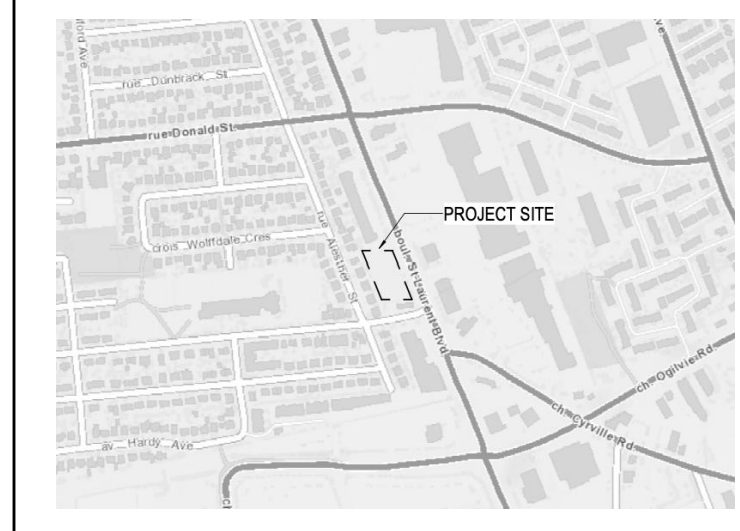
GENERAL NOTES

- IT IS THE RESPONSIBILITY OF THE APPROPRIATE CONTRACTOR OR OFFICIAL TO REPORT ANY ERRORS, OMISSIONS OR DISCREPANCIES ON THIS PLAN WITH ACTUAL SITE CONDITIONS TO THE LANDSCAPE ARCHITECT BEFORE PROCEEDING WITH CONSTRUCTION.
- THE CONTRACTOR IS TO NOTIFY ALL UTILITY COMPANIES AND AUTHORITIES PRIOR TO ANY EXCAVATION AND ASCERTAIN LOCATIONS OF UNDERGROUND SERVICES.
- THE CONTRACTOR IS TO REINSTATE ALL AREAS AND ITEMS DAMAGED AS A RESULT OF CONSTRUCTION ACTIVITY.
- THE CONTRACTOR IS TO COMPLY WITH ALL PERTINENT CODES AND BY-LAWS.
- THE CONTRACTOR IS TO MAINTAIN A POSITIVE SURFACE RUN-OFF THROUGHOUT THE ENTIRE CONSTRUCTION PERIOD.
- THE LANDSCAPE ARCHITECT IS NOT RESPONSIBLE FOR SUBSURFACE CONDITIONS.
- THE CONTRACTOR IS TO IDENTIFY ALL EXISTING TREES TO REMAIN ON SITE WITH THE LANDSCAPE ARCHITECT PRIOR TO CONSTRUCTION.
- THE CONTRACTOR IS TO STAKE THE PROPOSED LOCATION OF ALL PLANT MATERIAL IN CONJUNCTION WITH THE LANDSCAPE ARCHITECT PRIOR TO EXCAVATION.
- MINIMUM DISTANCES FOR SELECTED DECIDUOUS TREES ARE AS FOLLOWS:
 - BUILDING FOUNDATIONS - 7.5M
 - SIDEWALKS - 1.5M
 - PUBLIC STREETS - 2.5M
 - UNDERGROUND INFRASTRUCTURE - 2.0M
- ALL TREES WITHIN 1M OF UNDERGROUND UTILITY TRENCHES ARE TO BE EXCAVATED BY HAND.
- REMOVE ALL PROTECTIVE WRAPPING FROM TREE TRUNKS AFTER INSTALLATION.
- STAKING OF TREES SHALL ONLY BE PERFORMED IF NECESSARY.
- ENSURE THAT MULCH IS PULLED BACK A MINIMUM DISTANCE OF 75MM FROM BASE OF TREE TRUNK.

PROPOSED PLANT LIST

KEY	QTY.	BOTANICAL NAME	COMMON NAME	SIZE	CONDITION	REMARKS
DECIDUOUS TREES						
AC	4	<i>Amelanchier canadensis</i>	Shadblow Serviceberry	50mm cal	B&B	
SR	5	<i>Syringa reticulata</i>	Japanese Tree Lilac	50mm cal	B&B	
SHRUBS						
Cal	1	<i>Cornus alternifolia</i>	Pagoda Dogwood	2000mm ht.	Stringball	Space 3000mm o.c.
Ha	16	<i>Hydrangea arborescens</i> 'Annabelle'	Annabelle Hydrangea	3 gal. pot	Potted	Space 800mm o.c.
Ra	20	<i>Rhus aromatica</i> 'Gro-Low'	Grow-Low Fragrant Sumac	500mm ht.	Potted	Space 800mm o.c.
Rr	56	<i>Rosa rugosa</i>	Rugosa Rose	800mm ht.	Potted	Space 800mm o.c.
PERENNIALS/ ORNAMENTAL GRASSES						
ca	14	<i>Calamagrostis x acutiflora</i> 'Karl Foerster'	Karl Foerster Grass	250mm pot	Potted	Space 800mm o.c.

KEY PLAN
NTS



40-YEAR CANOPY COVER CALCULATION

3,218 m² site area
 (10) Proposed Small Deciduous Trees (7m² ea.)
 Existing canopy cover: 115m²
 =185m² canopy cover = 5.5% canopy cover
 * Small Deciduous Trees calculated at 3m spread.

EXISTING TREES: #
 FOR FURTHER INFORMATION REGARDING THE EXISTING TREES, PLEASE REFER TO THE TREE INFORMATION PLAN PREPARED BY THE IFS GROUP, SEPTEMBER 20th, 2025.

PART OF LOTS 1, 2, 3 & 4
 REGISTERED PLAN 79
 CITY OF OTTAWA

CLIENT
 100182489 Ontario Inc.

CONSULTANTS
 ARCHITECTS: **project1 studio**
 Project 1 Studio Incorporated
 (613) 884-3939 | info@project1studio.ca

CIVIL ENGINEERS: **NOVATECH**
 Suite 200, 240 Michael Cowpland Drive
 Ottawa, Ontario, Canada K2M 1P6

- LEGEND**
- EXISTING TREE TO REMAIN
 - PROPOSED DECIDUOUS TREE
 - PROPOSED CONIFEROUS TREE
 - PROPOSED SHRUBS/ PERENNIALS
 - PROPOSED TREE PROTECTION FENCE
 - PROPOSED SOD
 - PROPOSED RIVERSTONE MULCH
 - PROPOSED PRECAST PAVERS (SEE ARCH)
 - PROPOSED CONCRETE PAVING (SEE ARCH)
 - PROPOSED ASPHALT BIKE LANE (SEE ARCH)

JAMES B. LENNOX & ASSOCIATES INC.
 LANDSCAPE ARCHITECTS
 3332 CARLING AVE. OTTAWA, ONTARIO K2H 5A8
 Tel. (613) 722-5168 Fax. (866) 343-3942

PROJECT
 PROPOSED MIXED USE HIGH RISE BUILDING
 1052 ST. LAURENT BOULEVARD, OTTAWA ON

DRAWING
 LANDSCAPE PLAN

STAMP

 SCALE
 AS SHOWN
 START DATE
 JULY 2025
 PROJECT NO.
 25MIS2535

PROJECT NORTH

 DRAWING NO.
L.1
 PLOT SIZE ARCH-D