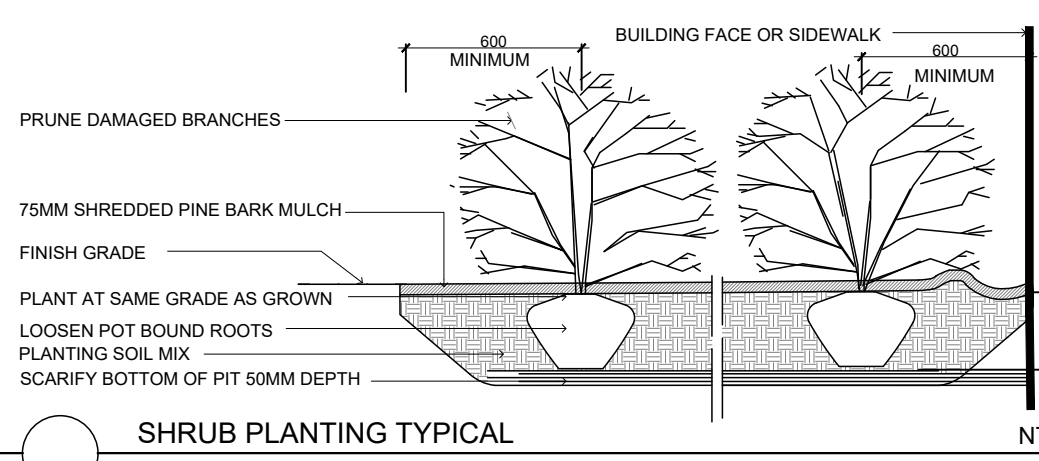
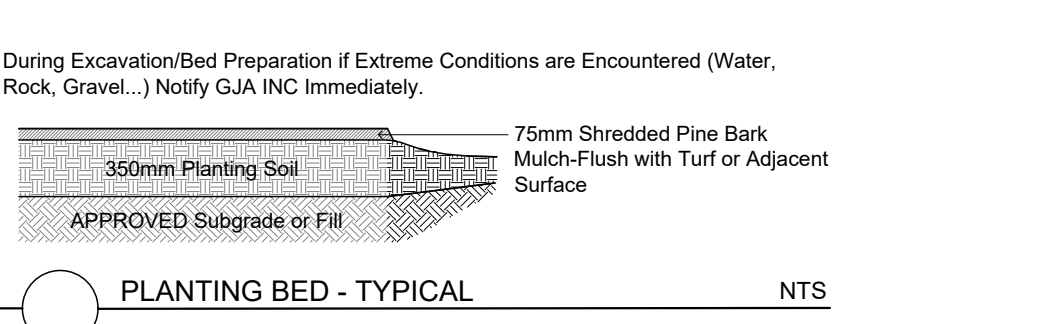


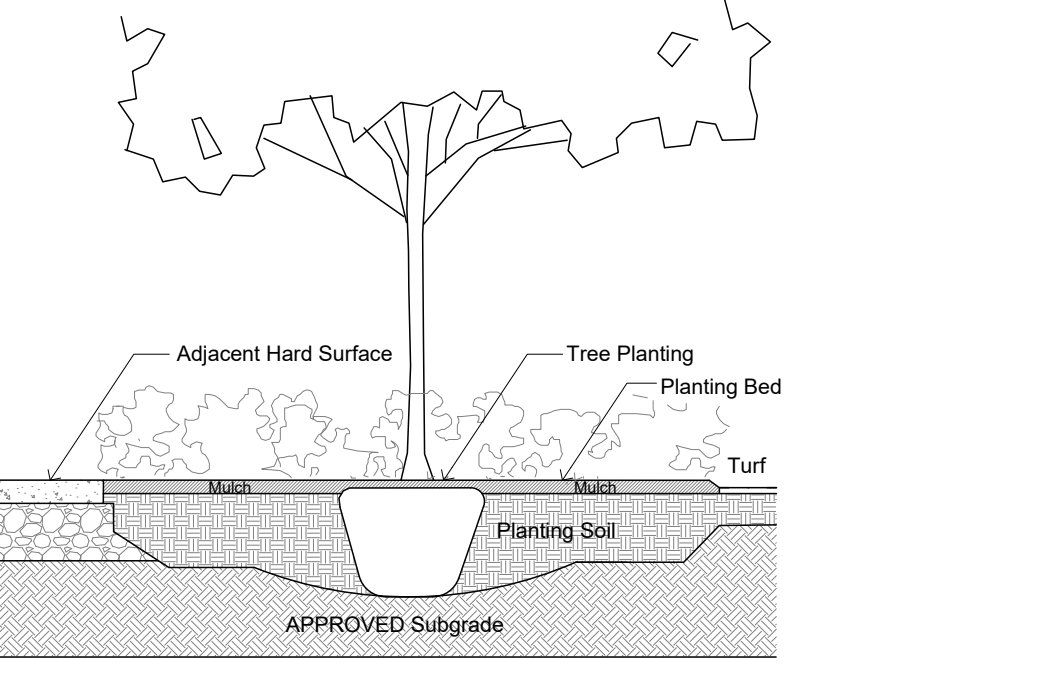
TREE PLANTING TYPICAL Section NTS



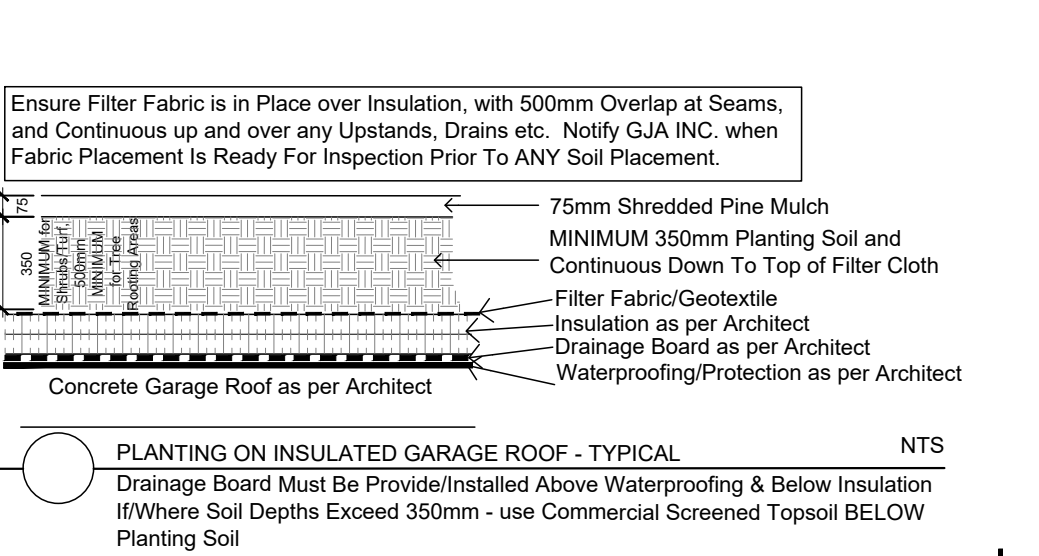
SHRUB PLANTING TYPICAL Section NTS



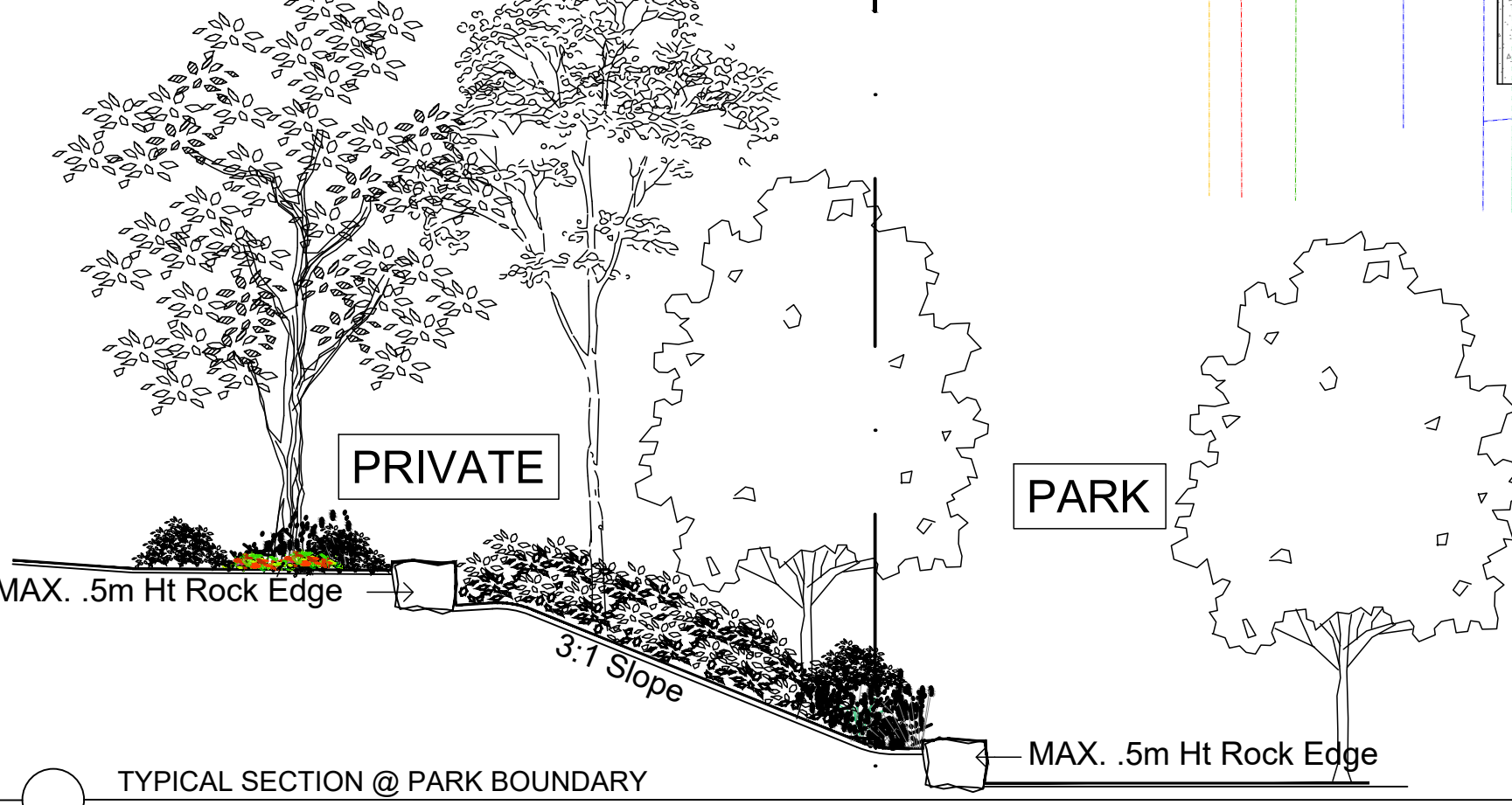
PLANTING BED - TYPICAL Section NTS



TREE PLANTING IN PLANTING BED Section NTS



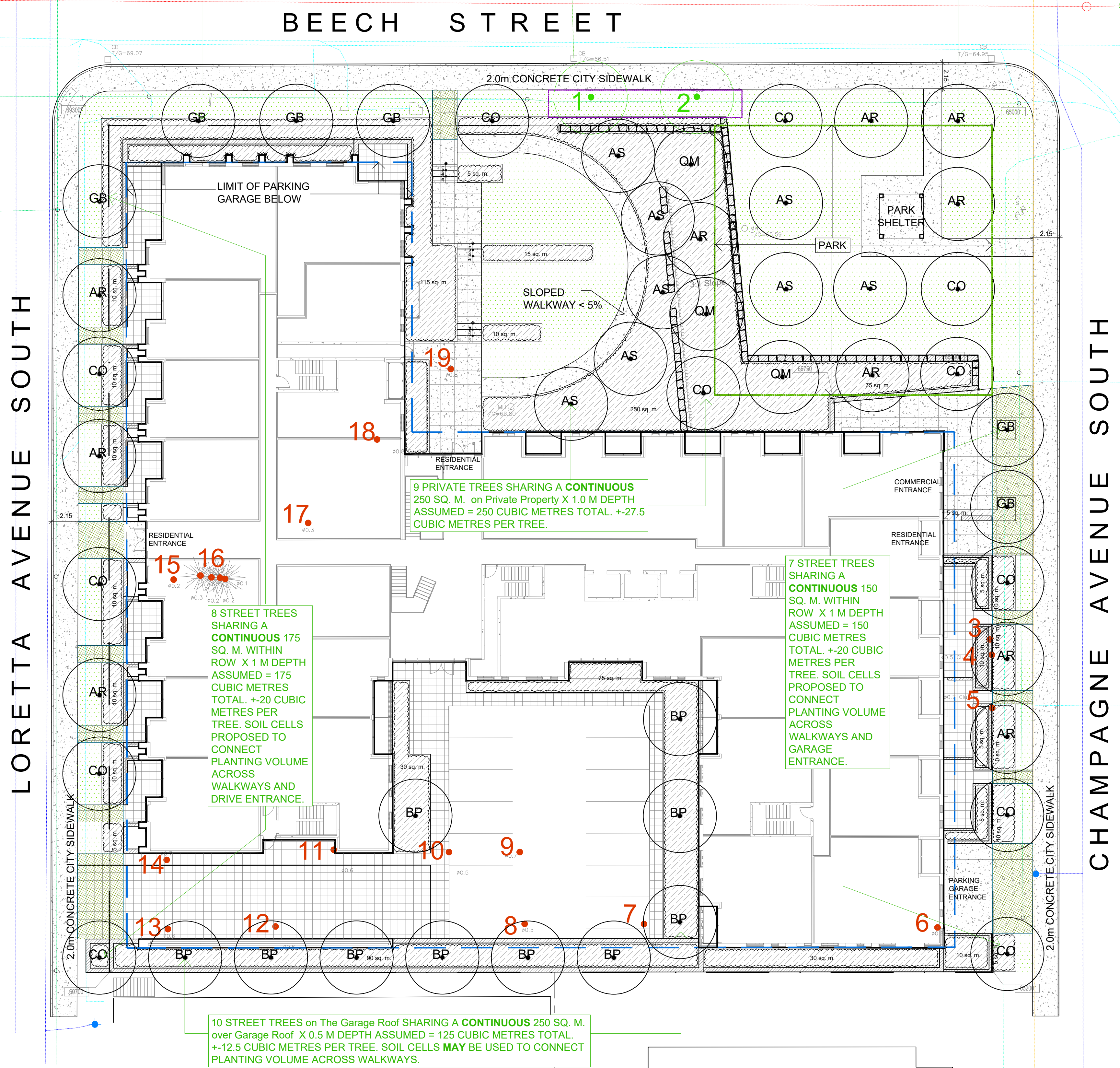
PLANTING ON INSULATED GARAGE ROOF - TYPICAL Section NTS



TYPICAL SECTION @ PARK BOUNDARY Section NTS

8 STREET TREES SHARING A CONTINUOUS 200 SQ. M. WITHIN ROW X 1 M DEPTH ASSUMED = 200 CUBIC METRES TOTAL. +25 CUBIC METRES PER TREE. SOIL CELLS PROPOSED TO CONNECT PLANTING VOLUME ACROSS WALKWAYS.

PRELIMINARY ASSUMPTION IS THAT ALL OVERHEAD POWER/COMMUNICATION WILL BE BURIED (within the ROW/Layout TBD) ON ALL 3 STREETS.



9 PRIVATE TREES SHARING A CONTINUOUS 250 SQ. M. on Private Property X 1.0 M DEPTH ASSUMED = 250 CUBIC METRES TOTAL. +27.5 CUBIC METRES PER TREE.

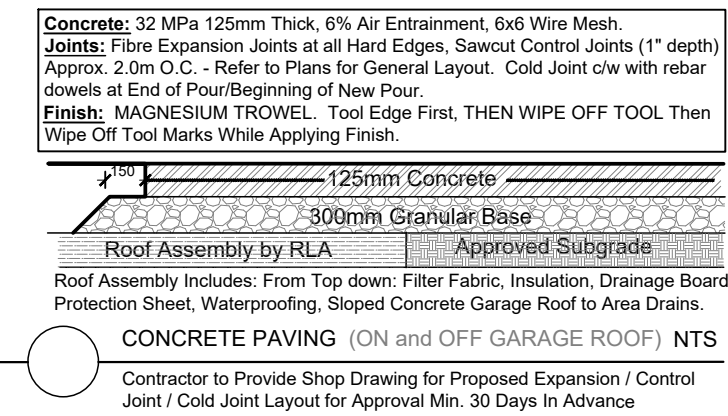
8 STREET TREES SHARING A CONTINUOUS 175 SQ. M. WITHIN ROW X 1 M DEPTH ASSUMED = 175 CUBIC METRES TOTAL. +20 CUBIC METRES PER TREE. SOIL CELLS PROPOSED TO CONNECT PLANTING VOLUME ACROSS WALKWAYS AND DRIVE ENTRANCE.

7 STREET TREES SHARING A CONTINUOUS 150 SQ. M. WITHIN ROW X 1 M DEPTH ASSUMED = 150 CUBIC METRES TOTAL. +20 CUBIC METRES PER TREE. SOIL CELLS PROPOSED TO CONNECT PLANTING VOLUME ACROSS WALKWAYS AND GARAGE ENTRANCE.

10 STREET TREES on The Garage Roof SHARING A CONTINUOUS 250 SQ. M. over Garage Roof X 0.5 M DEPTH ASSUMED = 125 CUBIC METRES TOTAL. +12.5 CUBIC METRES PER TREE. SOIL CELLS MAY BE USED TO CONNECT PLANTING VOLUME ACROSS WALKWAYS.

TREE SCHEDULE - 116 BEECH MIXED USE KTS PROPERTIES										
CODE	QTY	BOTANICAL NAME	COMMON NAME	B&B SPECIMEN	NATIVE to CANADA	FORECASTED SPREAD as per City of Ottawa Forestry	Canopy Cover Contribution/Tree in Square Metres	Total Canopy Cover		
						DIAMETER	RADIUS			
AR	10	Acer rubrum	Red Maple	50mm cal	YES	10.0M	5.0M	78.5	785	
AS	8	Acer saccharum	Sugar Maple	50mm cal	YES	14.0M	7.0M	154	1232	
CO	12	Celtis occidentalis	Common Hackberry	50mm cal	YES	14.0M	7.0M	154	1848	
GB	9	Ginkgo biloba	Maidenhair Tree	50mm cal	YES	10.0M	5.0M	78.5	706.5	
QM	3	Quercus macrocarpa	Bur Oak	50mm cal	YES	14.0M	7.0M	154	462	
<b>TOTAL</b>	<b>42</b>	<b>TOTAL FORECASTED CANOPY COVER IN SQUARE METRES (based on Calculations per Tree as shown above)</b>							<b>5033.5</b>	
		<b>TOTAL FORECASTED CANOPY COVER IN SQUARE METRES ADJUSTED for OVERLAP WITH OTHER TREES, BUILDINGS ETC</b>							<b>3750</b>	
		<b>SITE AREA in Square Metres</b>							<b>5000</b>	
		<b>TOTAL FORECASTED CANOPY COVER as Percentage of Site Area</b>							<b>75.00%</b>	

SHRUB PLANTING 815 Square Metres						
Code	Qty.	Botanical Name	Common Name	Size	Condition	NATIVE
AC		Amelanchier canadensis	Tree Serviceberry	1.0m Ht.	Pot	YES
CR		Cornus racemosa	Grey Dogwood	1.0m Ht.	Pot	YES
VL		Viburnum lentago	Nannyberry	1.0m Ht.	Pot	YES
RP		Rosa palustris	Swamp Rose	50cm	Pot	YES
SA'		Symphoricarpos albus	Snowberry	50cm	Pot	YES
SA		Spiraea alba	Meadowsweet	50cm	Pot	YES
HK		Hypericum kalmianum	Kalm St. John's Wort	30cm	Pot	YES
HP		Hypericum prolificum	Shrubby St. John's Wort	40cm	Pot	YES
AU		Arctostaphylos uva ursi	Bearberry	30cm spr	Pot	YES
PV		Panicum virgatum	Switch Grass	9 cm Pot		YES



GJA Inc. GND@GJAINC.COM (613) 286 5130

**CONSULTANTS**

**SURVEY**

FARLEY, SMITH & DENIS SURVEYING LTD.  
275-30 Colborne Road K2E 7J8  
613 277 8208  
fsd@gjainc.com

**ARCHITECT**

Project Studio Incorporated  
300-260 St. Patrick Street Ottawa K1N 5K5  
613 844 3000  
mail@projectstudio.ca  
projectstudio.ca

**CIVIL**

NOVATECH Engineers, Planners & Landscape Architects  
205-240 Mutual Compound Drive, K2M 1P6  
613 552 2475  
novatech@novatech.ca  
novatech.com

**CONSTRUCT**

IFS ASSOCIATES  
P.O. BOX 13593 OTTAWA K1K 1X6  
613 552 2475  
ifs@ifsassociates.ca  
ifsassociates.ca

REFER TO TCR BY IFS

Existing Tree to Remain

Protection for Existing Trees

Existing Tree to Remove

**LANDSCAPE PROPOSED**

Deciduous Tree

Planting Bed

Shrub Planting

Soil Cell

Turf

Retaining / Landscape / Planter Wall

Concrete

Concrete Monolithic Curb

Precast Pavers

**SITE / ARCHITECTURE**

Parking Garage Below

Fire Hydrant

FD Siamese Connection

Light Standard

Hydro/Utility Pole

**BELOW GRADE SERVICES REFER TO CIVIL/CUP**

WTR U/G Water Service

STM U/G Storm Service

SAN U/G Sanitary Service

GAS U/G Gas Service

BC U/G TelCo Service

H U/G Hydro Service

OHW O/H Hydro Service

Swale

3:1 / 33% Slope

TWSI

1 ZBLA SUBMISSION 1 2025 12 19

0 REVIEW COORDINATION 2025 11 00

# Revision Date

PROPERTY OWNER

**BEECH STREET LP**

401-265 Carling Avenue Ottawa K1S 2E1

**GJA INC.**

GINO J. AIELLO | LANDSCAPE ARCHITECT

GJAINC.COM | 613 286 5130 | GINO@GJAINC.COM

**MIXED USE DEVELOPMENT**

116 BEECH STREET OTTAWA

**Landscape Plan**

**L1**

Scale: 1:200

DRAWING REMAINS THE PROPERTY OF COPYRIGHT RESERVED BY GJA INC. DO NOT USE OR REPRODUCE WITHOUT APPROVAL OF GINO J. AIELLO. | PLANTING MIX TO BE APPROVED BY LANDSCAPE ARCHITECT | PLANT MATERIAL TO MEET CNLA STANDARDS/BE APPROVED BY LANDSCAPE ARCHITECT PRIOR TO PLANTING ALL MATERIALS & WORK TO BE MAINTAINED UNTIL FINAL ACCEPTANCE. INCLUDE 1 YEAR WARRANTY FROM DATE OF FINAL ACCEPTANCE | REFER TO CIVIL ENGINEER'S DRAWING FOR ELEVATIONS / GRADING | The Landscape Plan is to be read in conjunction with the grading, servicing, site and survey plan. All trees to be preserved on or directly adjacent to the site will be protected | Plant material are to be installed a minimum of 3.0m away from any part of any hydro transformer, 3.0m corridor between a fire hydrant and the curb, a 2.5m radius beside or behind a fire hydrant, 2.0m from any servicing/utility line or structure |

CONTRACTOR TO PROVIDE SHOP DRAWING FOR PROPOSED EXPANSION / CONTROL JOINT / COLD JOINT LAYOUT FOR APPROVAL MIN. 30 DAYS IN ADVANCE

# PLAN NO