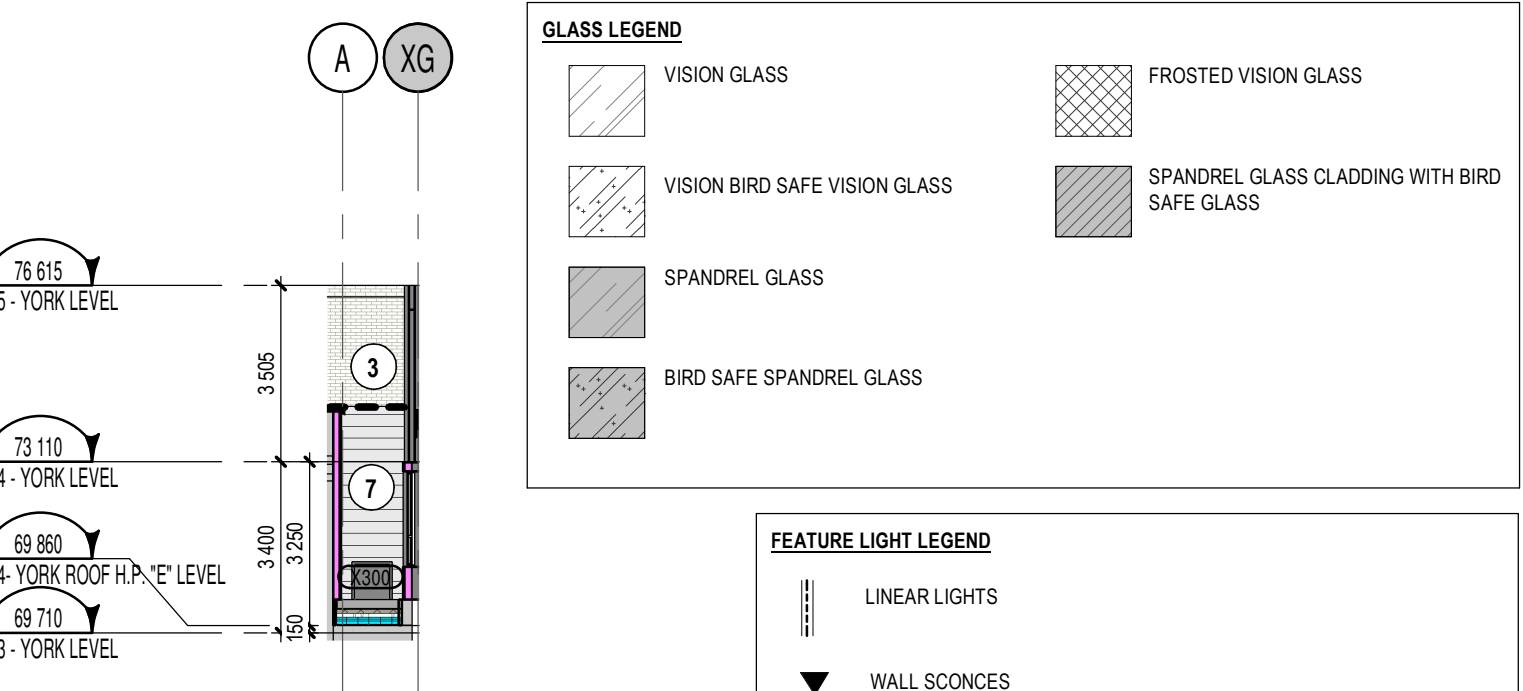


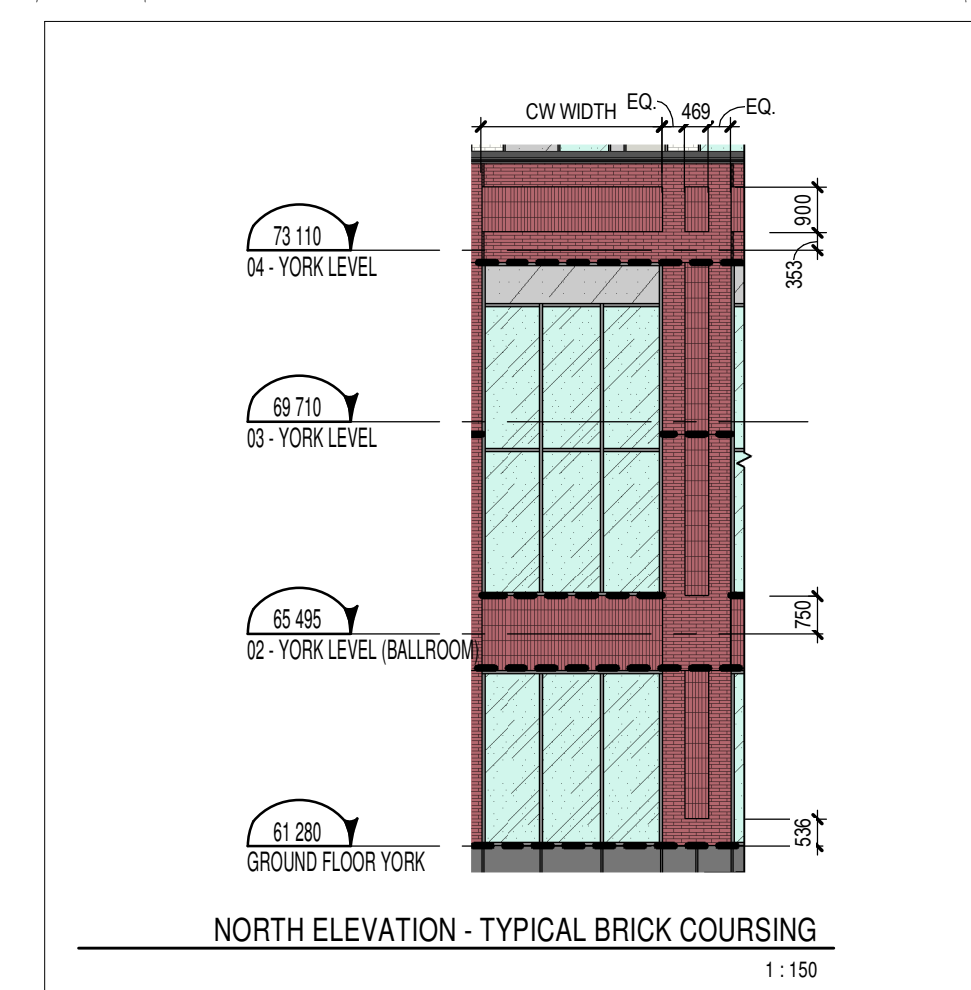
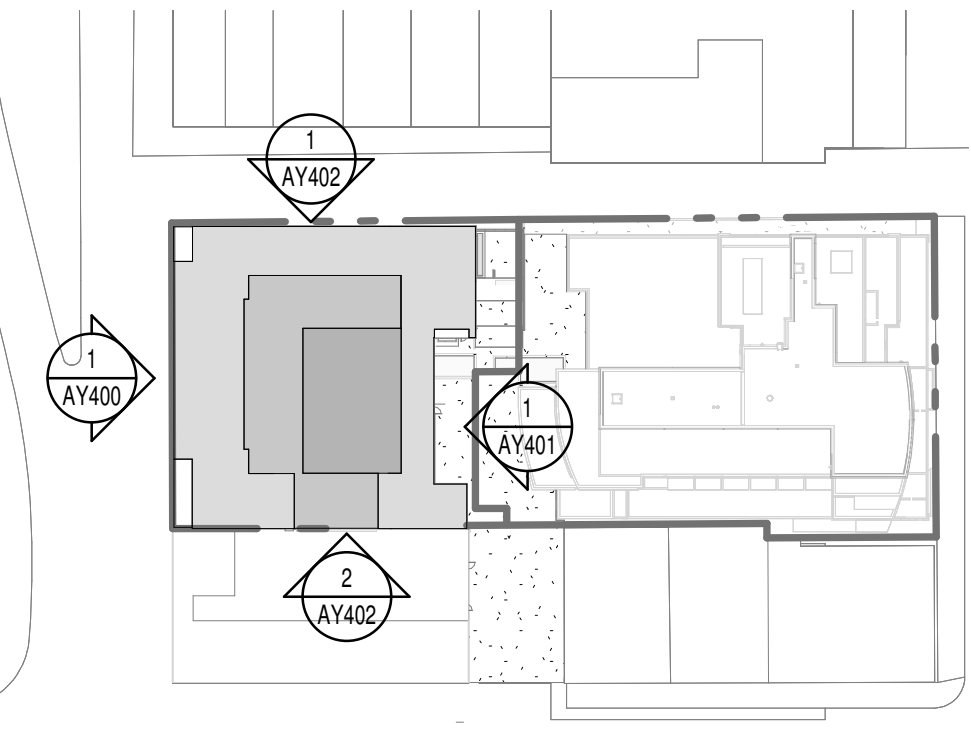
NOTE	DESCRIPTION
1	GRANITE PANEL WALL BASE, JET MIST COLOUR, FLAMED FINISH. REFER TO ELEVATIONS FOR SIZE
2	MASONRY BRICK VENEER, RED COLOUR CLOSELY MATCHING ORIGINAL BUILDING FINISHES. COLOUR WILLIAMSBURG MK2 BY CANADA BRICK. UNIT METRIC NORMAN FORMAT 57x290x90mm. ALL GROUT AND SEALANTS TO BE CONFIRMED BY THE ARCHITECT.
2P	PRECAST CONCRETE PANELS, RED COLOUR CLOSELY MATCHING BRICK VENEER. FORMAT 57x290x90mm. ALL GROUT AND SEALANTS TO BE CONFIRMED BY ARCHITECT.
3	MASONRY BRICK VENEER, SILVER CITY WIRECUT MODULAR UNITS FROM GLEN-GERY, 57x194x92D. ALL GROUT AND SEALANTS TO MATCH BRICK COLOUR.
4D	PRE-FINISHED ALUMINUM MODULAR PANELS, COLOUR TO MATCH MULLIONS ACRYNAR CHARCOAL GRAY (UCFX10080)
4L	LIGHT GREY PRE-FINISHED ALUMINUM MODULAR PANELS, CLEAR ANOZOD COLOUR TO MATCH EXISTING ANDAZ COLOUR
5	CURTAIN WALL, SEALED GLASS UNIT / PREPAINTED ALUMINUM FRAME, ACRYNAR CHARCOAL GRAY (UCFX10080) COLOUR EXTERIOR AND CLEAR ANOZOD (200A/300A) INTERIOR SEE CURTAIN WALL ELEVATION PAGE.
6	WINDOW WALL, SEALED GLASS UNIT / PREPAINTED ALUMINUM FRAME, ACRYNAR CHARCOAL GRAY (UCFX10080) COLOUR EXTERIOR AND CLEAR ANOZOD (200A/300A) INTERIOR SEE WINDOW WALL ELEVATION PAGE.
7	PREPAINTED HORIZONTAL STEEL CLADDING, COLOUR TO MATCH ADJACENT WALL FINISH.
8	PERFORATED METAL SCREEN HANGING IN FRONT OF MECHANICAL LOUVER WITHIN WINDOW SYSTEM. COLOUR TO BE CONFIRMED BY ARCHITECT/INTERIOR DESIGNER.
9	PREPAINTED ALUMINUM VENTILATION GRILLE, COLOUR TO MATCH ADJACENT WALL FINISH. COORDINATION WITH MECHANICAL DRAWINGS FOR LOCATION.
9W	PREPAINTED ALUMINUM VENTILATION GRILLE, COLOUR TO MATCH ACRYNAR CHARCOAL GRAY (UCFX10080) WITHIN WINDOW SYSTEM. COORDINATION WITH MECHANICAL DRAWINGS FOR LOCATION.
10	PARAPET, COLOUR TO MATCH BRICK (ITEM 3 ON LEGEND).
10C	ARCHITECTURAL CORNICE OF BENT METAL FLASHING, COLOUR TO MATCH ACRYNAR CHARCOAL GRAY (UCFX10080)
11	PUNCHED WINDOW MULLIONS TO MATCH ITEM 6.
12	STEEL DOOR, COLOUR TO MATCH ADJACENT WALL FINISH.
13	GLAZED ENTRY DOOR, SEALED CLEAR GLASS UNIT / PREPAINTED ALUMINUM FRAME. SEE DOOR SCHEDULE PAGE. COLOUR TO MATCH CURTAIN WALL (ITEM 5 ON LEGEND).
13A	AUTOMATIC SLIDING GLAZED ENTRY DOOR, SEALED CLEAR GLASS UNIT / PREPAINTED ALUMINUM FRAME. SEE DOOR SCHEDULE PAGE. COLOUR TO MATCH CURTAIN WALL (ITEM 5 ON LEGEND).
14	FIRE DEPARTMENT CONNECTION, REFER TO CIVIL.
15	HEAVY DUTY RUBBER ROLL-UP DOOR, COLOUR AS PER MANUFACTURER STANDARD BLACK OR DARK GREY.
16	TYPICAL PAINTED STEEL BOLLARD, FILLED WITH CONCRETE.
17	WALL MOUNTED WALL PROTECTION, EXTRUDED RUBBER FENDER, REFER TO SPEC.
18	OVERFLOW SCUPPER, COLOUR TO MATCH ADJACENT EXTERIOR FINISH.
19	SIGNAGE, EXACT SIZE, COMPOSITION AND LOCATION TO BE DETERMINED BY THE RETAILER IN COORDINATION WITH CITY REQUIREMENTS.
21	SPANDREL GLASS CLADDING (OPAQUE) WITH PREPAINTED ALUMINUM FRAMING, COLOUR TO MATCH ITEMS
22	GLAZED SOUND BARRIER, MINIMUM 6mm THICK GLASS WITH FROSTED BIRD SAFE FINISH TO EXTERIOR FACE. POSTS TO BE GALVANISED STEEL
23	VERTICAL MASONRY CONTROL JOINT, 25mm SEALANT ON BACKER ROD. USED AS TYPICAL CONTROL MOVEMENT JOINTS AND VERTICAL TRANSITIONS BETWEEN DIFFERING COLOURED BRICK VENEERS.



GLASS LEGEND	
	VISION GLASS
	VISION BIRD SAFE VISION GLASS
	SPANDREL GLASS
	BIRD SAFE SPANDREL GLASS
	FROSTED VISION GLASS
	SPANDREL GLASS CLADDING WITH BIRD SAFE GLASS

FEATURE LIGHT LEGEND	
	LINEAR LIGHTS
	WALL SCANCES

ELEVATION LEGEND	
	EXTERIOR FINISH REFER TO ELEVATION KEYNOTE LEGEND
	WINDOW TYPE REFER TO WINDOW SCHEDULE
	PRE-PAINTED ALUMINUM WALL BOX VENTILATION GRILLE. COLOUR TO MATCH ADJACENT FINISH. COORDINATE WITH MECHANICAL ENGINEER DRAWINGS FOR LOCATIONS.
	GALVANIZED STEEL STRUCTURAL SHELF ANGLE. LEVELS AND LOCATIONS TO BE COORDINATED WITH THE ARCHITECTURAL METALS SECTIONS, MASONRY COURSINGS, STEEL SHOP DRAWINGS AND STRUCTURAL ENGINEER DRAWINGS.



NORTH ELEVATION (YORK)  
1:150

**GENERAL NOTES**

- These architectural documents are the exclusive property of NEUF architect(e)s inc. and cannot be used, copied, or reproduced without written pre-authorization.
- The contractor is responsible for checking and verifying all dimensions with respect to the project. Any discrepancy shall be reported to the architect.
- The architect must be notified of all errors, omissions, and discrepancies between these documents and those of the other professionals.
- Do not scale drawings. The dimensions on these documents must be read and not measured.
- These drawings are to be read in conjunction with all material relevant to the project.

Mechanical - Electrical Engineer  
**JAIN**  
7405 East Danbro Crescent, 2nd Floor Mississauga, Ontario, L5N 6P8  
T 905 285 9900 | jainconsultants.com

Structural Engineer  
**ADJELIAN ALLEN RUBELI LIMITED**  
75 Albert Street, Suite 1005, Ottawa, Ontario K1P 5E7  
T 613 232 5766 | aar.ca

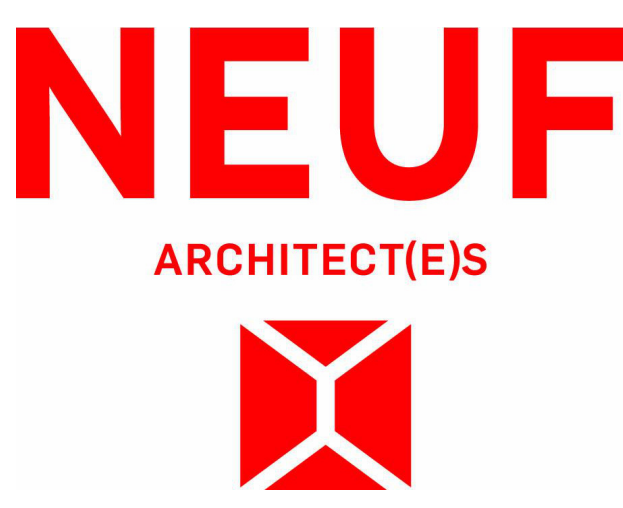
Landscaping Architect  
**James B. Lennox & Associates**  
5535 Carling Avenue, Ottawa ON K2H 5A6  
T 613 722 5168 | jbla.ca

Civil  
**Novatech Eng. Consultants Ltd.**  
240, Michael Cowland Drive, Suite 200, Ottawa ON K2M 1P6  
T 613 234 9653 | novatech-eng.com

Architect  
**NEUF Architectes INC.**  
10 Rideau Street, 4th floor, Ottawa ON K1N 9J1  
T 514 947 1117 | neuf.ca

Interior Design  
**Mason Studio**  
51 Palham Avenue, Toronto ON M6N 1A5  
T 416 781 9736 | masonstudio.com

SURVEYOR  
**ANNIS O'SULLIVAN VOLLEBEKK Ltd.**  
14 Concourse Gate, Suite 500, Nepean ON K2E 7S6  
T 613 727 0650 | aovl.com



Client  
**CLARIDGE HOMES**  
505 Preston St, 2nd Floor, Ottawa ON, K1S 4N7  
T 613 219 8503 | claridgehomes.com

Project  
**110-116 YORK STREET**

Location  
**OTTAWA**

No.  
**13098.00**

NO	REVISION	DATE (yyyy.mm.dd)
NNN	FOR SITE PLAN APPROVAL	2025.06.30
PPP	FOR HH SD REVIEW #7	2025.07.03
OOO	FOR SITE PLAN APPROVAL	2025.07.15
UUU	ISSUED FOR PERMIT	2025.08.12
VVV	FOR SITE PLAN APPROVAL	2025.08.15
YYY	FOR COORDINATION	2025.10.03
ZZZ	FOR COORDINATION	2025.11.05
BBBB	FOR COORDINATION	2025.11.10
CCCC	FOR SITE PLAN APPROVAL	2025.11.11
FFFF	FOR TENDER	2025.12.10
HHHH	ADDENDUM #1	2025.12.19
KKKK	ADDENDUM #2	2026.01.15
MMMM	ADDENDUM #3	2026.02.09
NNNN	FOR REVISED SUPERSTRUCTURE PERMIT	2026.02.10
TTTT	FOR REVISED SITE PLAN APPROVAL	2026.03.27
UUUU	ADDENDUM #4	2026.03.30
VVVV	FOR REVISED SITE PLAN APPROVAL	2026.04.06

Drawn by  
**SJ/OM/AA**

Checked by  
**LH**

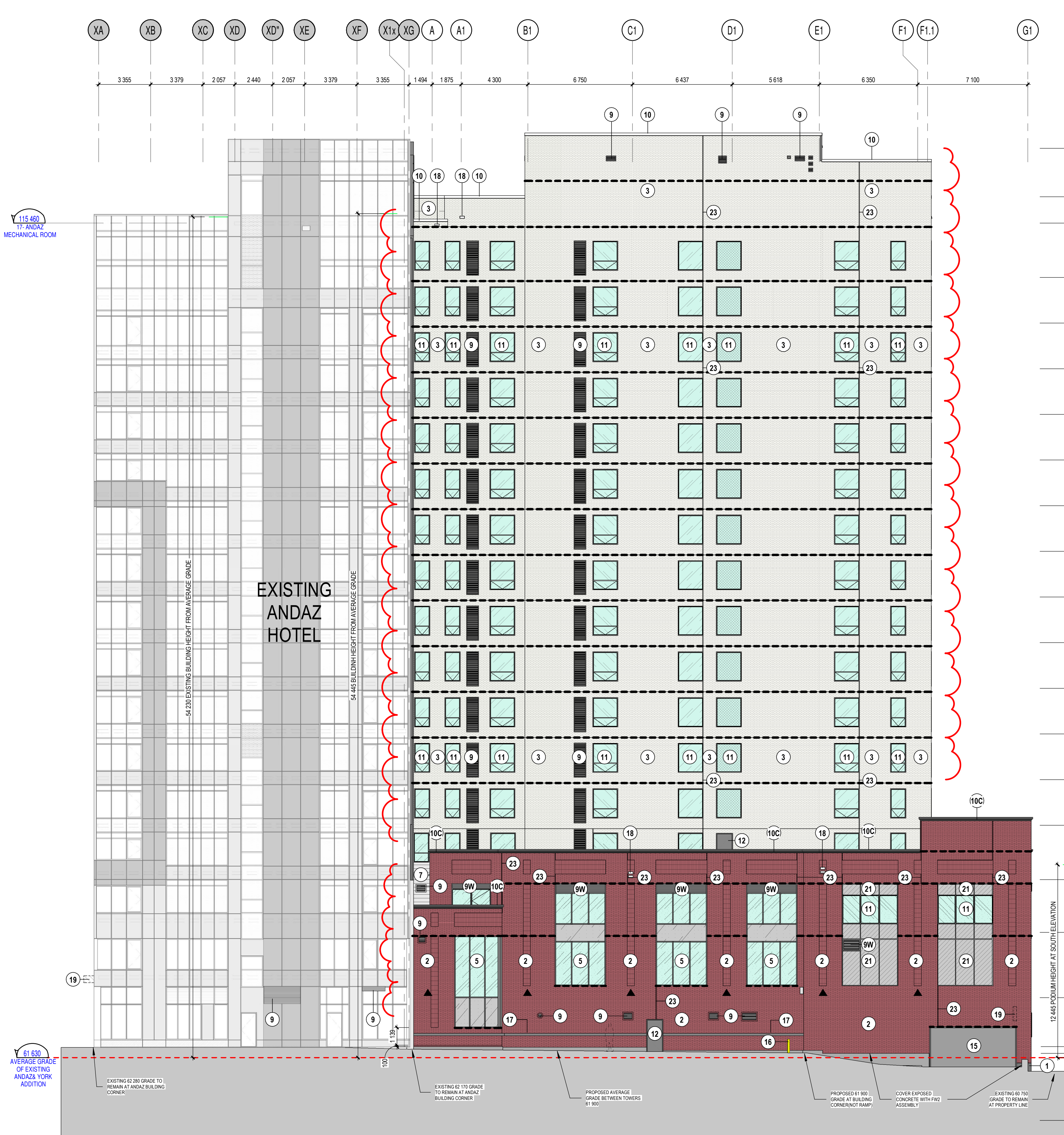
DATE (aa.mm.jj)  
**JUN 2023**

Scale  
**As indicated**

Drawing Title  
**ELEVATION (NORTH)**

Revision  
**VVVV**

Dwg Number  
**AY400**

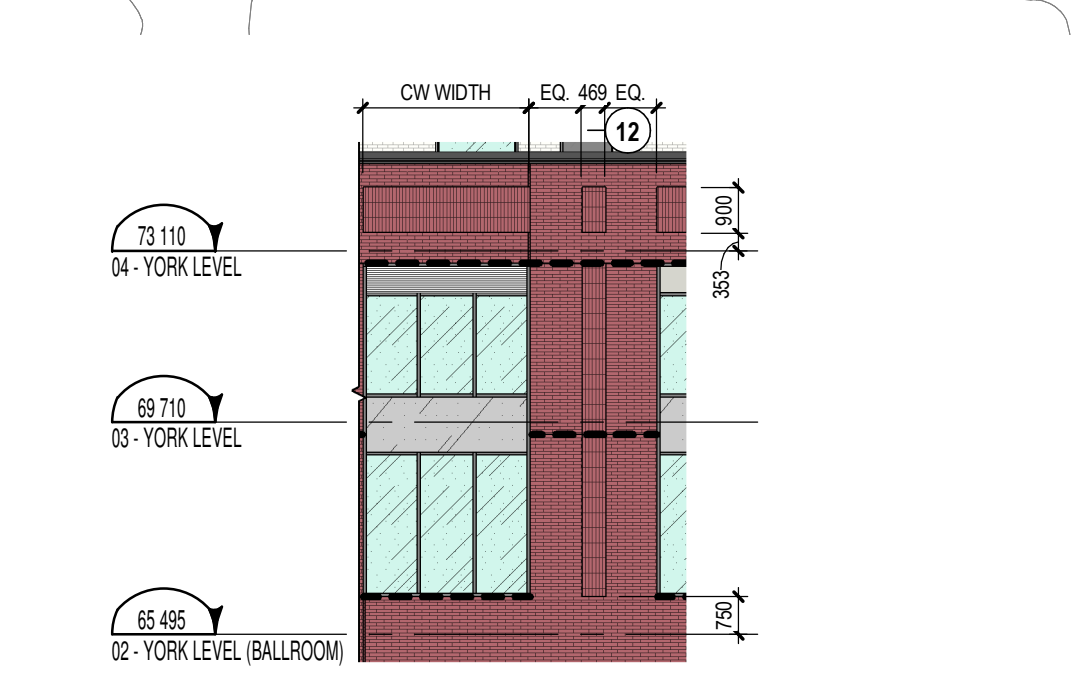
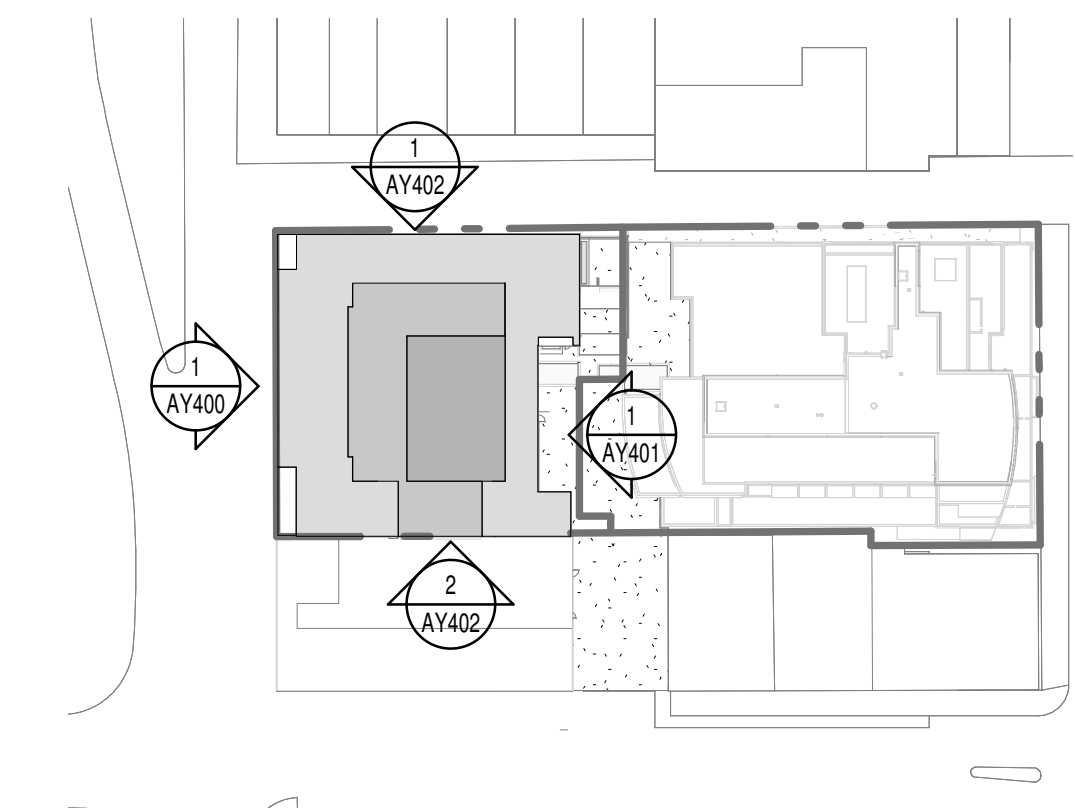


NOTE	DESCRIPTION
1	GRANITE PANEL WALL BASE, JET MIST COLOUR, FLAMED FINISH. REFER TO ELEVATIONS FOR SIZE.
2	MASONRY BRICK VENEER, RED COLOUR, CLOSELY MATCHING ORIGINAL BUILDING FINISHES. COLOUR WILLIAMSBURG MK2 BY CANADA BRICK UNIT METRIC NORMAN FORMAT 57X260X90mm. ALL GROUT AND SEALANTS TO BE CONFIRMED BY THE ARCHITECT.
2P	PRECAST CONCRETE PANELS, RED COLOUR, CLOSELY MATCHING BRICK VENEER. FORMAT 57X260X90mm. ALL GROUT AND SEALANTS TO BE CONFIRMED BY ARCHITECT.
3	MASONRY BRICK VENEER, SILVER CITY WIRECUT MODULAR UNITS FROM GLEN-GERY, 57x194x92D, ALL GROUT AND SEALANTS TO MATCH BRICK COLOUR.
4D	PRE-FINISHED ALUMINUM MODULAR PANELS, COLOUR TO MATCH MULLIONS ACRYNAR CHARCOAL GRAY (UCFX10080).
4L	LIGHT GREY PRE-FINISHED ALUMINUM MODULAR PANELS, CLEAR ANODIZED COLOUR TO MATCH EXISTING ANDAZ COLOUR.
5	CURTAIN WALL, SEALED GLASS UNIT / PREPAINTED ALUMINUM FRAME, ACRYNAR CHARCOAL GRAY (UCFX10080) COLOUR EXTERIOR AND CLEAR ANODIZED (200A/300A) INTERIOR SEE CURTAIN WALL ELEVATION PAGE.
6	WINDOW WALL, SEALED GLASS UNIT / PREPAINTED ALUMINUM FRAME, ACRYNAR CHARCOAL GRAY (UCFX10080) COLOUR EXTERIOR AND CLEAR ANODIZED (200A/300A) INTERIOR SEE WINDOW WALL ELEVATION PAGE.
7	PREPAINTED HORIZONTAL STEEL CLADDING, COLOUR TO MATCH ADJACENT WALL FINISH.
8	PERFORATED METAL SCREEN HANGING IN FRONT OF MECHANICAL LOUVER WITHIN WINDOW SYSTEM. COLOUR TO BE CONFIRMED BY ARCHITECT/INTERIOR DESIGNER.
9	PREPAINTED ALUMINUM VENTILATION GRILLE, COLOUR TO MATCH ADJACENT WALL FINISH. COORDINATION WITH MECHANICAL DRAWINGS FOR LOCATION.
9W	PREPAINTED ALUMINUM VENTILATION GRILLE, COLOUR TO MATCH ACRYNAR CHARCOAL GRAY (UCFX10080) WITHIN WINDOW SYSTEM. COORDINATION WITH MECHANICAL DRAWINGS FOR LOCATION.
10	PARAPET, COLOUR TO MATCH BRICK (ITEM 3 ON LEGEND).
10C	ARCHITECTURAL CORNICE OF BENT METAL FLASHING, COLOUR TO MATCH ACRYNAR CHARCOAL GRAY (UCFX10080).
11	PUNCHED WINDOW MULLIONS TO MATCH ITEM 6.
12	STEEL DOOR, COLOUR TO MATCH ADJACENT WALL FINISH.
13	GLAZED ENTRY DOOR, SEALED CLEAR GLASS UNIT / PREPAINTED ALUMINUM FRAME. SEE DOOR SCHEDULE PAGE. COLOUR TO MATCH CURTAIN WALL (ITEM 5 ON LEGEND).
13A	AUTOMATIC SLIDING GLAZED ENTRY DOOR, SEALED CLEAR GLASS UNIT / PREPAINTED ALUMINUM FRAME. SEE DOOR SCHEDULE PAGE. COLOUR TO MATCH CURTAIN WALL (ITEM 5 ON LEGEND).
14	FIRE DEPARTMENT CONNECTION, REFER TO CIVIL.
15	HEAVY DUTY RUBBER ROLL-UP DOOR, COLOUR AS PER MANUFACTURER STANDARD BLACK OR DARK GREY.
16	TYPICAL PAINTED STEEL BOLLARD, FILLED WITH CONCRETE.
17	WALL MOUNTED WALL PROTECTION, EXTRUDED RUBBER FENDER, REFER TO SPEC.
18	OVERFLOW SCUPPER, COLOUR TO MATCH ADJACENT EXTERIOR FINISH.
19	SIGNAGE, EXACT SIZE, COMPOSITION AND LOCATION TO BE DETERMINED BY THE RETAILER IN COORDINATION WITH CITY REQUIREMENTS.
21	SPANDREL GLASS CLADDING (OPAQUE) WITH PREPAINTED ALUMINUM FRAMING, COLOUR TO MATCH ITEMS.
22	GLAZED SOUND BARRIER, MINIMUM 6mm THICK GLASS WITH FROSTED BIRD SAFE FINISH TO EXTERIOR FACE. POSTS TO BE GALVANIZED STEEL.
23	VERTICAL MASONRY CONTROL JOINT, 25mm SEALANT ON BACKER ROD. USED AS TYPICAL CONTROL MOVEMENT JOINTS AND VERTICAL TRANSITIONS BETWEEN DIFFERING COLOURED BRICK VENEERS.

GLASS LEGEND	
	VISION GLASS
	VISION BIRD SAFE VISION GLASS
	SPANDREL GLASS
	BIRD SAFE SPANDREL GLASS
	FROSTED VISION GLASS
	SPANDREL GLASS CLADDING WITH BIRD SAFE GLASS

FEATURE LIGHT LEGEND	
	LINEAR LIGHTS
	WALL SCUNCES

ELEVATION LEGEND	
	EXTERIOR FINISH REFER TO ELEVATION KEYNOTE LEGEND
	WINDOW TYPE REFER TO WINDOW SCHEDULE
	PRE-PAINTED ALUMINUM WALL BOX VENTILATION GRILLE, COLOUR TO MATCH ADJACENT FINISH. COORDINATE WITH MECHANICAL ENGINEER DRAWINGS FOR LOCATIONS.
	GALVANIZED STEEL STRUCTURAL SHELF ANGLE, LEVELS AND LOCATIONS TO BE COORDINATED WITH THE ARCHITECTURAL DETAILS SECTIONS, MASONRY COURSING, STEEL SHOP DRAWINGS AND STRUCTURAL ENGINEER DRAWINGS.



**SOUTH ELEVATION**  
1 : 150

1  
AY401

**GENERAL NOTES**

- These architectural documents are the exclusive property of NEUF architect(e)s inc. and cannot be used, copied, or reproduced without written pre-authorization.
- The contractor is responsible for checking and verifying all dimensions with respect to the project. Any discrepancy shall be reported to the architect.
- The architect must be notified of all errors, omissions, and discrepancies between these documents and those of the other professionals.
- Do not scale drawings. The dimensions on these documents must be read and not measured.
- These drawings are to be read in conjunction with all material relevant to the project.

Mechanical - Electrical Engineer  
**JAIN**  
7405 East Danbro Crescent, 2nd Floor Mississauga, Ontario, L5N 6P8  
T 905 285 9900 jainconsultants.com

Structural Engineer  
**ADJELIAN ALLEN RUBELI LIMITED**  
75 Allen Street, Suite 1005, Ottawa, Ontario K1P 5E7  
T 613 232 5786 aar.ca

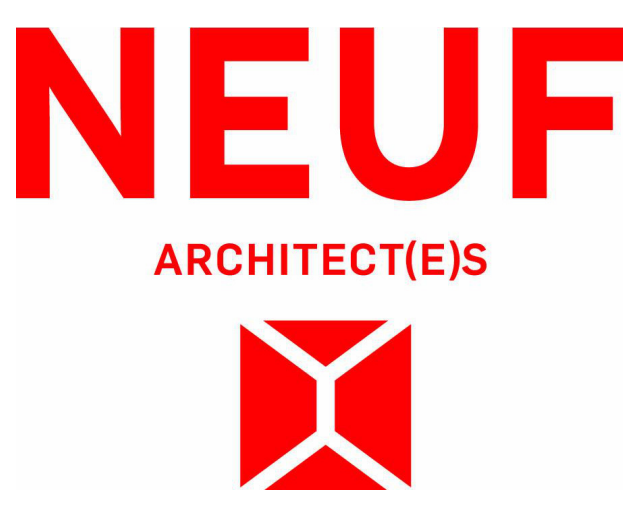
Landscape Architect  
**James B. Lennox & Associates**  
5555 Carling Avenue, Ottawa ON K2H 5A6  
T 613 722 5168 jbla.ca

Civil  
**Novatech Eng. Consultants Ltd.**  
240, Michael Cowland Drive, Suite 200, Ottawa ON K2M 1P6  
T 613 234 9653 novatech-eng.com

Architect  
**NEUF Architectes INC.**  
10 Rideau Street, 4th floor, Ottawa ON K1N 9J1  
T 514 947 1117 neuf.ca

Interior Design  
**Mason Studio**  
51 Palmham Avenue, Toronto ON M6N 1A5  
T 416 781 9736 masonstudio.com

SURVEYOR  
**ANNIS O'SULLIVAN VOLLEBEKK Ltd.**  
14 Concourse Gate, Suite 500, Nepean ON K2E 756  
T 613 277 0505 aovl.com



Client  
**CLARIDGE HOMES**  
505 Preston St, 2nd Floor, Ottawa ON, K1S 4N7  
T 613 219 8503 claridgehomes.com

Project  
**110-116 YORK STREET**

Location  
**OTTAWA**

No.  
**13098.00**

NO	REVISION	DATE (yyyy.mm.dd)
MMM	FOR COORDINATION	2025.06.18
NNN	FOR SITE PLAN APPROVAL	2025.06.30
PPP	FOR HH SD REVIEW #7	2025.07.03
QQQ	FOR SITE PLAN APPROVAL	2025.07.15
UUUU	ISSUED FOR PERMIT	2025.08.12
VVV	FOR SITE PLAN APPROVAL	2025.09.15
YYY	FOR COORDINATION	2025.10.03
ZZZ	FOR COORDINATION	2025.11.05
BBBB	FOR COORDINATION	2025.11.10
CCCC	FOR SITE PLAN APPROVAL	2025.11.11
FFFF	FOR TENDER	2025.12.10
KKKK	ADDENDUM #2	2026.01.15
MMMM	ADDENDUM #3	2026.02.09
NNNN	FOR REVISED SUPERSTRUCTURE PERMIT	2026.02.10
TTTT	FOR REVISED SITE PLAN APPROVAL	2026.03.27
UUUU	ADDENDUM #4	2026.03.30
VVVV	FOR REVISED SITE PLAN APPROVAL	2026.04.06

Drawn by  
**SJ/OM**

Checked by  
**LH**

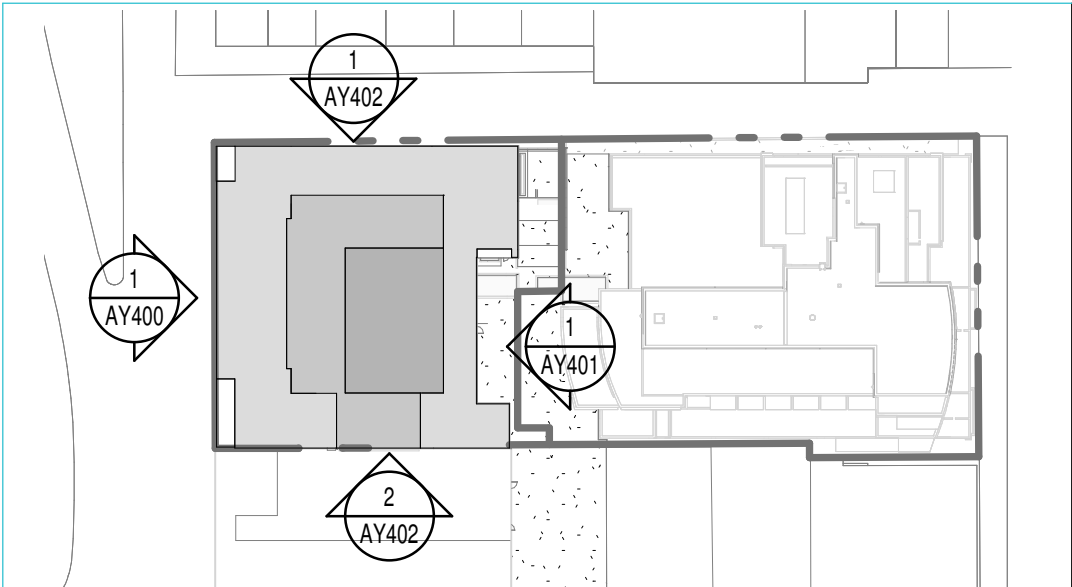
DATE (aa.mm.jj)  
**JUN 2023**

Scale  
**As indicated**

Drawing Title  
**ELEVATIONS (SOUTH)**

Revision  
**VVVV**

Dwg Number  
**AY401**



**EXTERIOR FINISH**  
REFER TO ELEVATION KEYNOTE LEGEND

WINDOW TYPE REFER TO WINDOW SCHEDULE

PRE-PAINTED ALUMINUM WALL BOX VENTILATION GRILL. COLOUR TO MATCH ADJACENT FINISH. COORDINATE WITH MECHANICAL ENGINEER DRAWINGS FOR LOCATIONS.

**GALVANIZED STEEL STRUCTURAL SHELF ANGLE**  
LEVELS AND LOCATIONS TO BE COORDINATED WITH THE ARCHITECTURAL DETAILS / SECTIONS. MASONRY COURSING, STEEL SHOP DRAWINGS AND STRUCTURAL ENGINEER DRAWINGS.

**GLASS LEGEND**

VISION GLASS

VISION BIRD SAFE VISION GLASS

SPANDREL GLASS

BIRD SAFE SPANDREL GLASS

FROSTED VISION GLASS

SPANDREL GLASS CLADDING WITH BIRD SAFE GLASS

**ELEVATION KEYNOTE LEGEND**

NOTE	DESCRIPTION
1	GRANITE PANEL WALL BASE, JET MIST COLOUR, FLAMED FINISH. REFER TO ELEVATIONS FOR SIZE.
2	MASONRY BRICK VENEER, RED COLOUR CLOSELY MATCHING ORIGINAL BUILDING FINISHES. COLOUR WILLIAMSBURG MK2 BY CANADA BRICK UNIT METRIC NORMAN FORMAT 57x200x90mm. ALL GROUT AND SEALANTS TO BE CONFIRMED BY THE ARCHITECT.
2P	PRECAST CONCRETE PANELS, RED COLOUR CLOSELY MATCHING BRICK VENEER, FORMAT 57X200X90MM. ALL GROUT AND SEALANTS TO BE CONFIRMED BY ARCHITECT.
3	MASONRY BRICK VENEER, SILVER CITY WIRECUT MODULAR UNITS FROM GLEN-GERY, 57Hx194Lx92D. ALL GROUT AND SEALANTS TO MATCH BRICK COLOUR.
4	PREFINISHED ALUMINUM MODULAR PANELS. COLOUR TO MATCH MULLIONS ACRYNAR CHARCOAL GRAY (UCFX10080).
4L	LIGHT GREY PREFINISHED ALUMINUM MODULAR PANELS. CLEAR ANODIZED COLOUR TO MATCH EXISTING ANDAZ COLOUR.
5	CURTAIN WALL SEALED GLASS UNIT / PREPARED ALUMINUM FRAME, ACRYNAR CHARCOAL GRAY (UCFX10080) COLOUR EXTERIOR AND CLEAR ANODIZED (200A200A) INTERIOR. SEE CURTAIN WALL ELEVATION PAGE.
6	WINDOW WALL SEALED GLASS UNIT / PREPARED ALUMINUM FRAME, ACRYNAR CHARCOAL GRAY (UCFX10080) COLOUR EXTERIOR AND CLEAR ANODIZED (200A200A) INTERIOR. SEE WINDOW WALL ELEVATION PAGE.
7	PREPARED HORIZONTAL STEEL CLADDING, COLOUR TO MATCH ADJACENT WALL FINISH.
8	PERFORATED METAL SCREEN HANGING IN FRONT OF MECHANICAL LOUVER WITHIN WINDOW SYSTEM. COLOUR TO BE CONFIRMED BY ARCHITECT/INTERIOR DESIGNER.
9	PREPARED ALUMINUM VENTILATION GRILLE. COLOUR TO MATCH ADJACENT WALL FINISH. COORDINATION WITH MECHANICAL DRAWINGS FOR LOCATION.
9W	PREPARED ALUMINUM VENTILATION GRILLE. COLOUR TO MATCH ACRYNAR CHARCOAL GRAY (UCFX10080) WITHIN WINDOW SYSTEM. COORDINATION WITH MECHANICAL DRAWINGS FOR LOCATION.

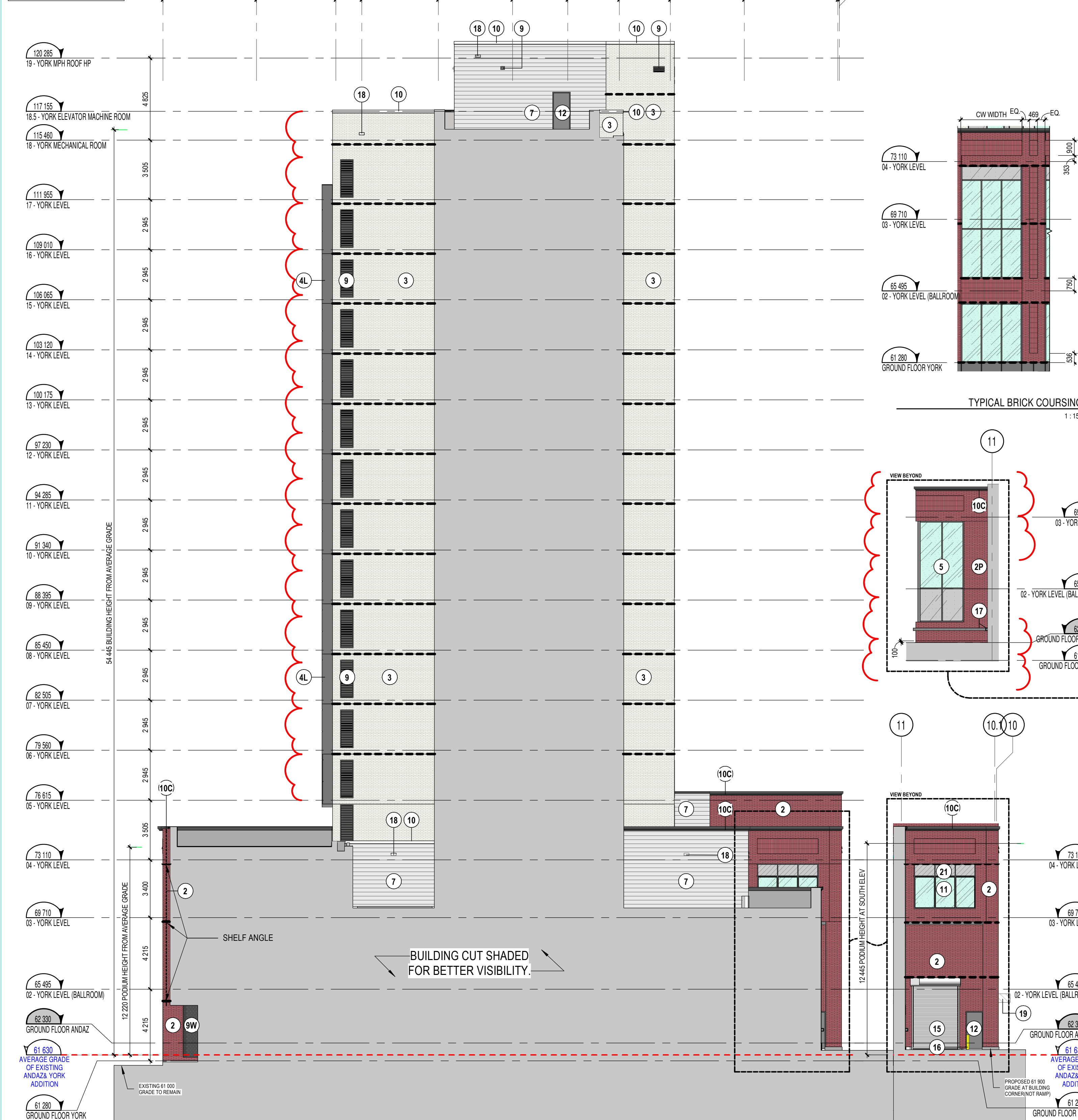
**ELEVATION KEYNOTE LEGEND**

NOTE	DESCRIPTION
10	PARAPET, COLOUR TO MATCH BRICK (ITEM 3 ON LEGEND).
10C	ARCHITECTURAL CORNICE OF BENT METAL FLASHING, COLOUR TO MATCH ACRYNAR CHARCOAL GRAY (UCFX10080).
11	PUNCHED WINDOW MULLIONS TO MATCH ITEM 6.
12	STEEL DOOR, COLOUR TO MATCH ADJACENT WALL FINISH.
13	GLAZED ENTRY DOOR, SEALED CLEAR GLASS UNIT / PREPARED ALUMINUM FRAME. SEE DOOR SCHEDULE PAGE. COLOUR TO MATCH CURTAIN WALL (ITEM 5 ON LEGEND).
13A	AUTOMATIC SLIDING GLAZED ENTRY DOOR, SEALED CLEAR GLASS UNIT / PREPARED ALUMINUM FRAME. SEE DOOR SCHEDULE PAGE. COLOUR TO MATCH CURTAIN WALL (ITEM 5 ON LEGEND).
14	FIRE DEPARTMENT CONNECTION, REFER TO CIVIL.
15	HEAVY DUTY RUBBER ROLL-UP DOOR, COLOUR AS PER MANUFACTURER STANDARD BLACK OR DARK GREY.
16	TYPICAL PAINTED STEEL BOLLARD, FILLED WITH CONCRETE.
17	WALL MOUNTED WALL PROTECTION, EXTRUDED RUBBER FENDER, REFER TO SPEC.
18	OVERFLOW SCUPPER, COLOUR TO MATCH ADJACENT EXTERIOR FINISH.
19	SIGNAGE, EXACT SIZE, COMPOSITION AND LOCATION TO BE DETERMINED BY THE RETAILER IN COORDINATION WITH CITY REQUIREMENTS.
21	SPANDREL GLASS CLADDING (CPAQUE) WITH PREPARED ALUMINUM FRAMING. COLOUR TO MATCH ITEM 5.
22	GLAZED SOUND BARRIER, MINIMUM 8mm THICK GLASS WITH FROSTED BIRD SAFE FINISH TO EXTERIOR FACE. POSTS TO BE GALVANIZED STEEL.
23	VERTICAL MASONRY CONTROL JOINT, 25mm SEALANT ON BACKER ROD, USED AS TYPICAL CONTROL MOVEMENT JOINTS AND VERTICAL TRANSITIONS BETWEEN DIFFERING COLOURED BRICK VENEERS.

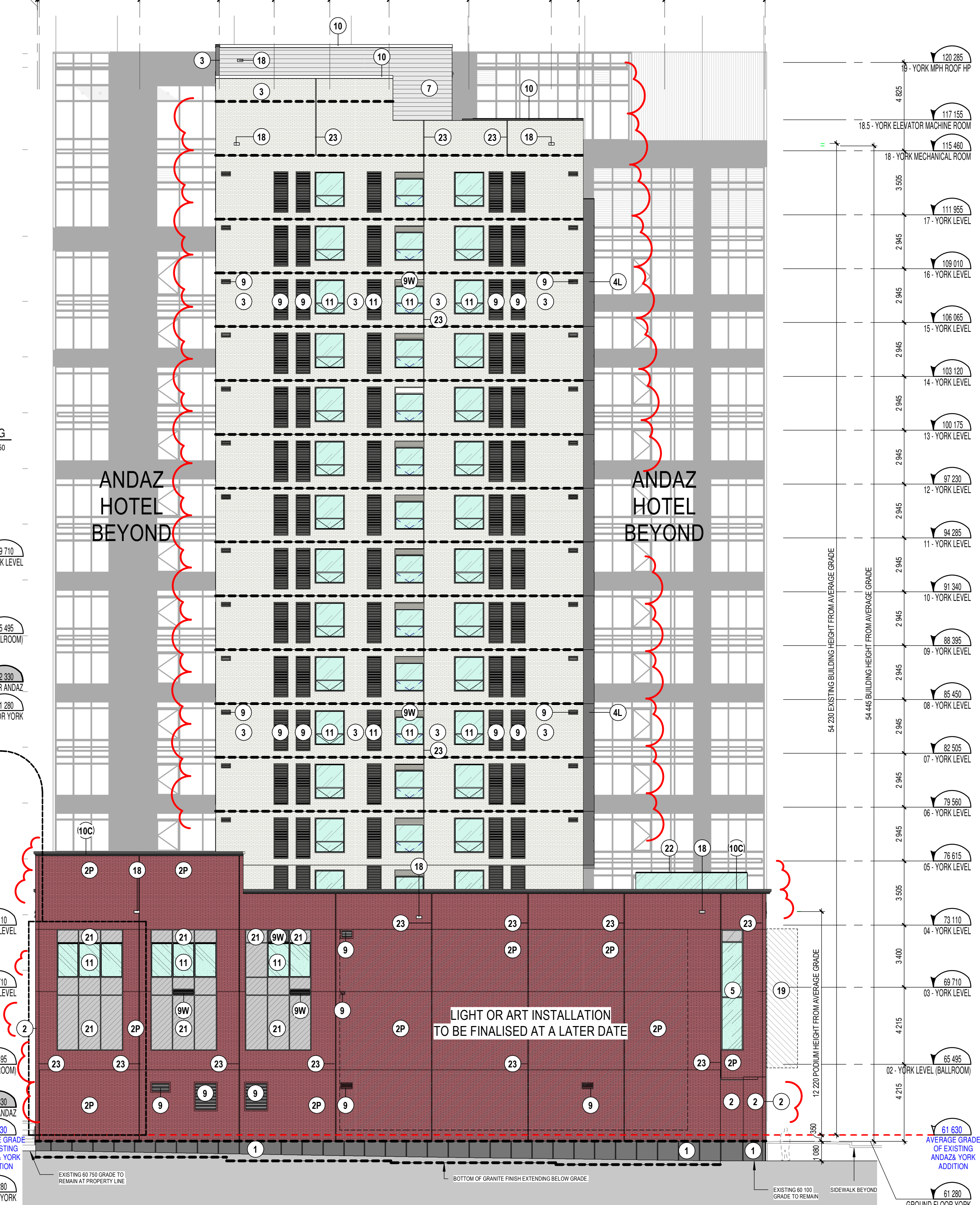
**FEATURE LIGHT LEGEND**

LINEAR LIGHTS

WALL SCONCES



**WEST ELEVATION**  
1:150



**EAST ELEVATION**  
1:150

**GENERAL NOTES**

- These architectural documents are the exclusive property of NEUF architect(e)s inc. and cannot be used, copied, or reproduced without written pre-authorization.
- The contractor is responsible for checking and verifying all dimensions with respect to the project. Any discrepancy shall be reported to the architect.
- The architect must be notified of all errors, omissions, and discrepancies between these documents and those of the other professionals.
- Do not scale drawings. The dimensions on these documents must be read and not measured.
- These drawings are to be read in conjunction with all material relevant to the project.

Mechanical - Electrical Engineer  
**JAIN**  
7405 East Danbro Crescent, 2nd Floor Mississauga, Ontario, L5N 6P8  
T 905 285 9900 | jainconsultants.com

Structural Engineer  
**ADJELEIAN ALLEN RUBELI LIMITED**  
75 Albert Street, Suite 1005, Ottawa, Ontario K1P 5E7  
T 613 232 5786 | aar.ca

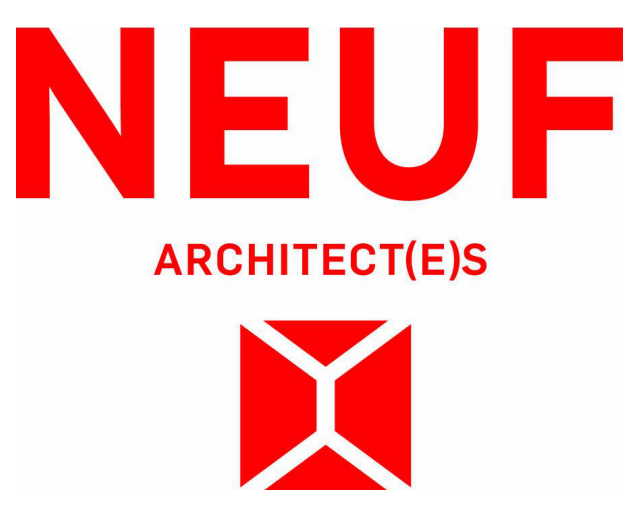
Landscape Architect  
**James B. Lennox & Associates**  
5335, Coring Avenue, Ottawa ON K2M 5A8  
T 613 722 5168 | jbla.ca

Civil  
**Novatech Eng. Consultants Ltd.**  
240, Michal Cowland Drive, Suite 200, Ottawa ON K2M 1P6  
T 613 234 9653 | novatech-eng.com

Architect  
**NEUF Architectes INC.**  
10 Rideau Street, 4th floor, Ottawa ON K1N 9J1  
T 514 947 1117 | neuf.ca

Interior Design  
**Mason Studio**  
51 Palham Avenue, Toronto ON M6N 1A5  
T 416 781 9798 | masonstudio.com

SURVEYOR  
**ANNIS O'SULLIVAN VOLLEBEKK Ltd.**  
14 Concourse Gate, Suite 500, Nepean ON K2E 756  
T 613 727 0650 | aovl.com



505 Preston St, 2nd Floor, Ottawa, ON, K1S 4N7  
T 613 219 8503 | claridgehomes.com

Project  
**110-116 YORK STREET**

Location  
**OTTAWA**

No.  
**13098.00**

NO	REVISION	DATE (yyyy.mm.dd)
MMM	FOR COORDINATION	2025.06.18
NNN	FOR SITE PLAN APPROVAL	2025.06.30
PPP	FOR HH SD REVIEW #7	2025.07.03
QQQ	FOR SITE PLAN APPROVAL	2025.07.15
UUU	ISSUED FOR PERMIT	2025.08.12
VVV	FOR SITE PLAN APPROVAL	2025.09.15
YYY	FOR COORDINATION	2025.10.03
ZZZ	FOR COORDINATION	2025.11.05
BBB	FOR COORDINATION	2025.11.10
CCC	FOR SITE PLAN APPROVAL	2025.11.11
FFF	FOR TENDER	2025.12.10
KKK	ADDENDUM #2	2026.01.15
MMM	ADDENDUM #3	2026.02.09
NNN	FOR REVISED SUPERSTRUCTURE PERMIT	2026.02.10
TTT	FOR REVISED SITE PLAN APPROVAL	2026.03.27
UUU	ADDENDUM #4	2026.03.30
VVV	FOR REVISED SITE PLAN APPROVAL	2026.04.06

Drawn by  
**SJ/OM**

Checked by  
**LH**

DATE (aa.mm.jj)  
**APRIL 2024**

Scale  
**As indicated**

Drawing Title  
**ELEVATIONS (EAST AND WEST)**

Revision  
**VVVV**

Dwg Number  
**AY402**

C:\Fichiers Revit\Locaux\YORKST\_13098\_ARC\_F22\_aaliyaR7RUH.rvt

DOT-12-25-0038