

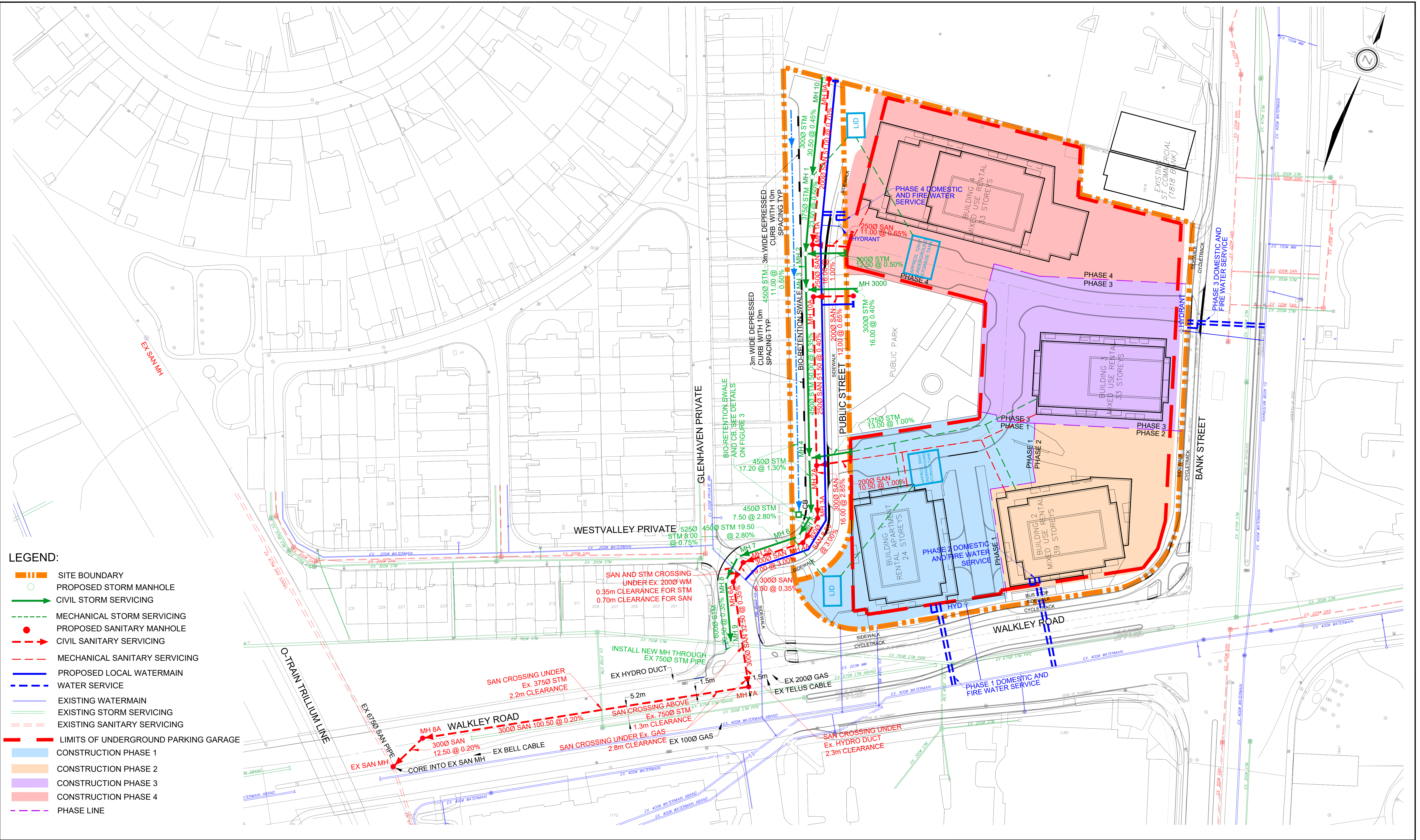
- LEGEND:**
- - - SITE BOUNDARY
 - STORM OVERLAND FLOW ARROW
 - 89.905 PROPOSED CENTERLINE ELEVATION
 - 0.15% ROAD SLOPE ARROW
 - - - LIMITS OF UNDERGROUND PARKING GARAGE



120 Iber Road, Unit 203
 Stittsville, ON K2S 1E9
 TEL: (613) 836-0856
 FAX: (613) 836-7183
 www.DSEL.ca

BGO - 1822 BANK ST
CONCEPTUAL GRADING PLAN
 CITY OF OTTAWA

PROJECT No. :	23-1369
SCALE	1:500
DATE:	FEBRUARY 2026
DRAWING No.	3



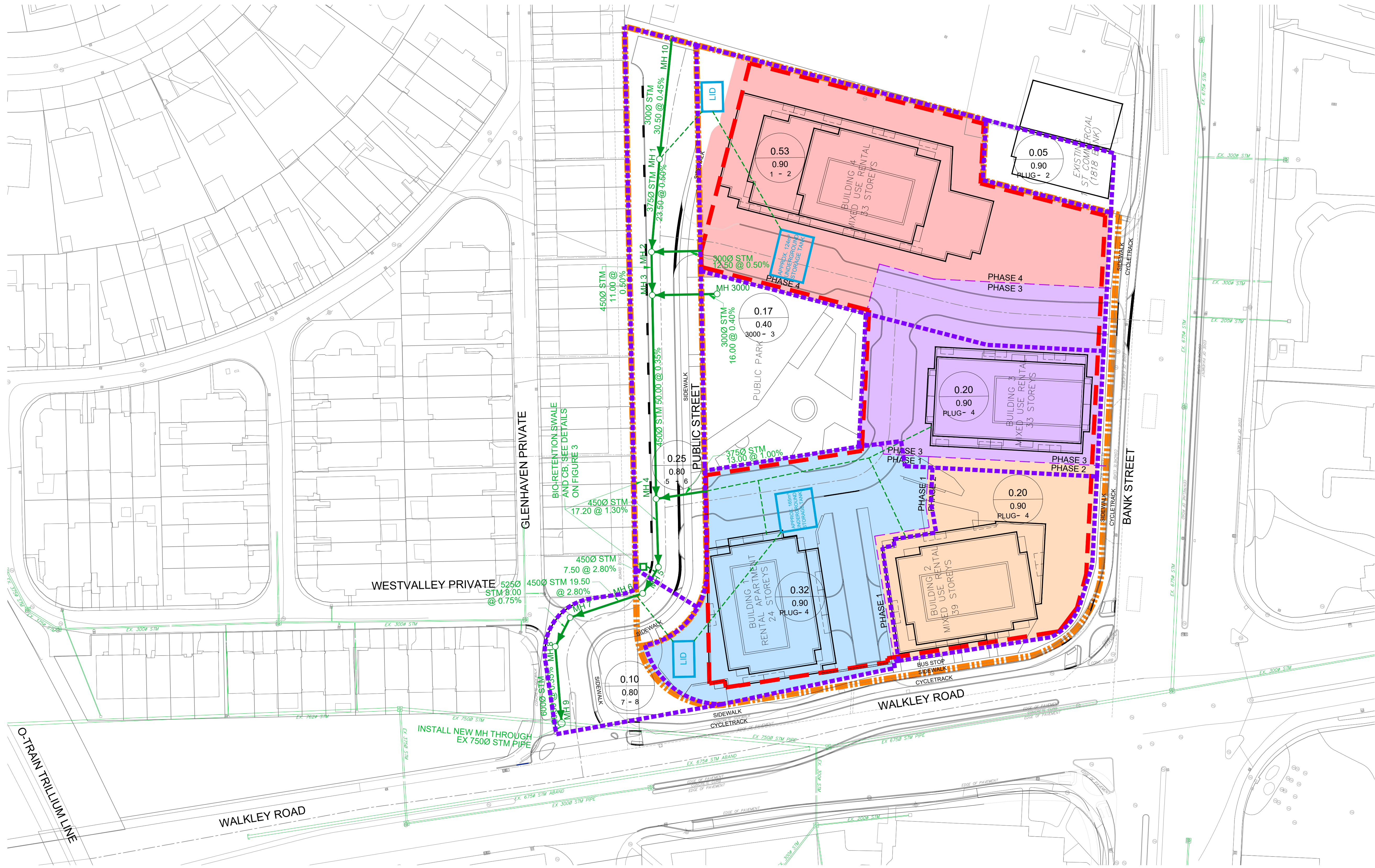
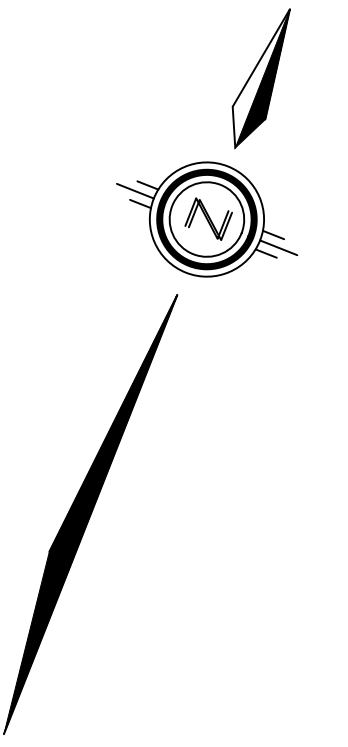
- LEGEND:**
- SITE BOUNDARY
 - PROPOSED STORM MANHOLE
 - CIVIL STORM SERVICING
 - - - MECHANICAL STORM SERVICING
 - PROPOSED SANITARY MANHOLE
 - - - CIVIL SANITARY SERVICING
 - - - MECHANICAL SANITARY SERVICING
 - PROPOSED LOCAL WATERMAIN
 - - - WATER SERVICE
 - EXISTING WATERMAIN
 - - - EXISTING STORM SERVICING
 - - - EXISTING SANITARY SERVICING
 - - - LIMITS OF UNDERGROUND PARKING GARAGE
 - CONSTRUCTION PHASE 1
 - CONSTRUCTION PHASE 2
 - CONSTRUCTION PHASE 3
 - CONSTRUCTION PHASE 4
 - - - PHASE LINE



120 Iber Road, Unit 203
 Stittsville, ON K2S 1E9
 TEL: (613) 836-0856
 FAX: (613) 836-7183
 www.DSEL.ca

BGO - 1822 BANK ST
CONCEPTUAL SERVICING PLAN
 CITY OF OTTAWA

PROJECT No. :	23-1369
SCALE	1:500
DATE:	FEBRUARY 2026
DRAWING No.	4



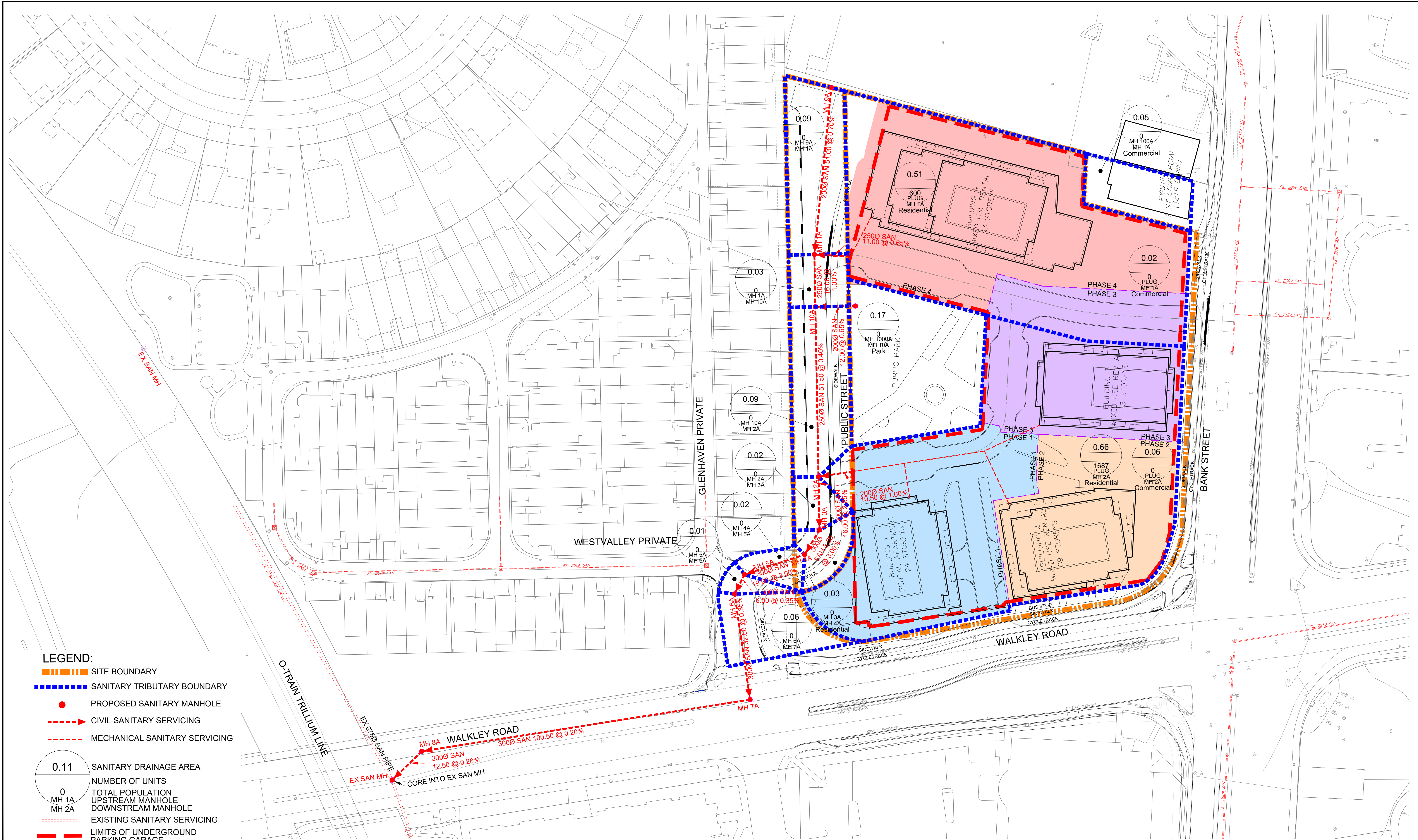
- LEGEND:**
- SITE BOUNDARY
 - STORM TRIBUTARY BOUNDARY
 - PROPOSED STORM MANHOLE
 - CIVIL STORM SERVICING
 - MECHANICAL STORM SERVICING
-
- 0.53
0.9
1 - 2 STORM DRAINAGE AREA
 - 0.9 RUNOFF COEFFICIENT UPSTREAM TO DOWNSTREAM MANHOLE
 - EXISTING STORM SERVICING
 - LIMITS OF UNDERGROUND PARKING GARAGE



120 Iber Road, Unit 203
 Stittsville, ON K2S 1E9
 TEL: (613) 836-0856
 FAX: (613) 836-7183
 www.DSEL.ca

BGO - 1822 BANK ST
STORM SERVICING PLAN
 CITY OF OTTAWA

PROJECT No. :	23-1369
SCALE	1:500
DATE:	FEBRUARY 2026
DRAWING No.	5



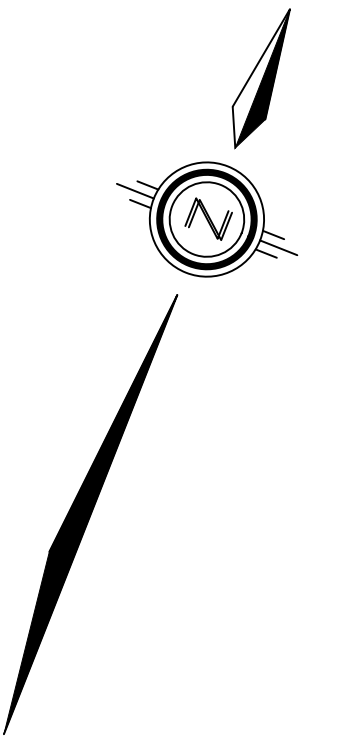
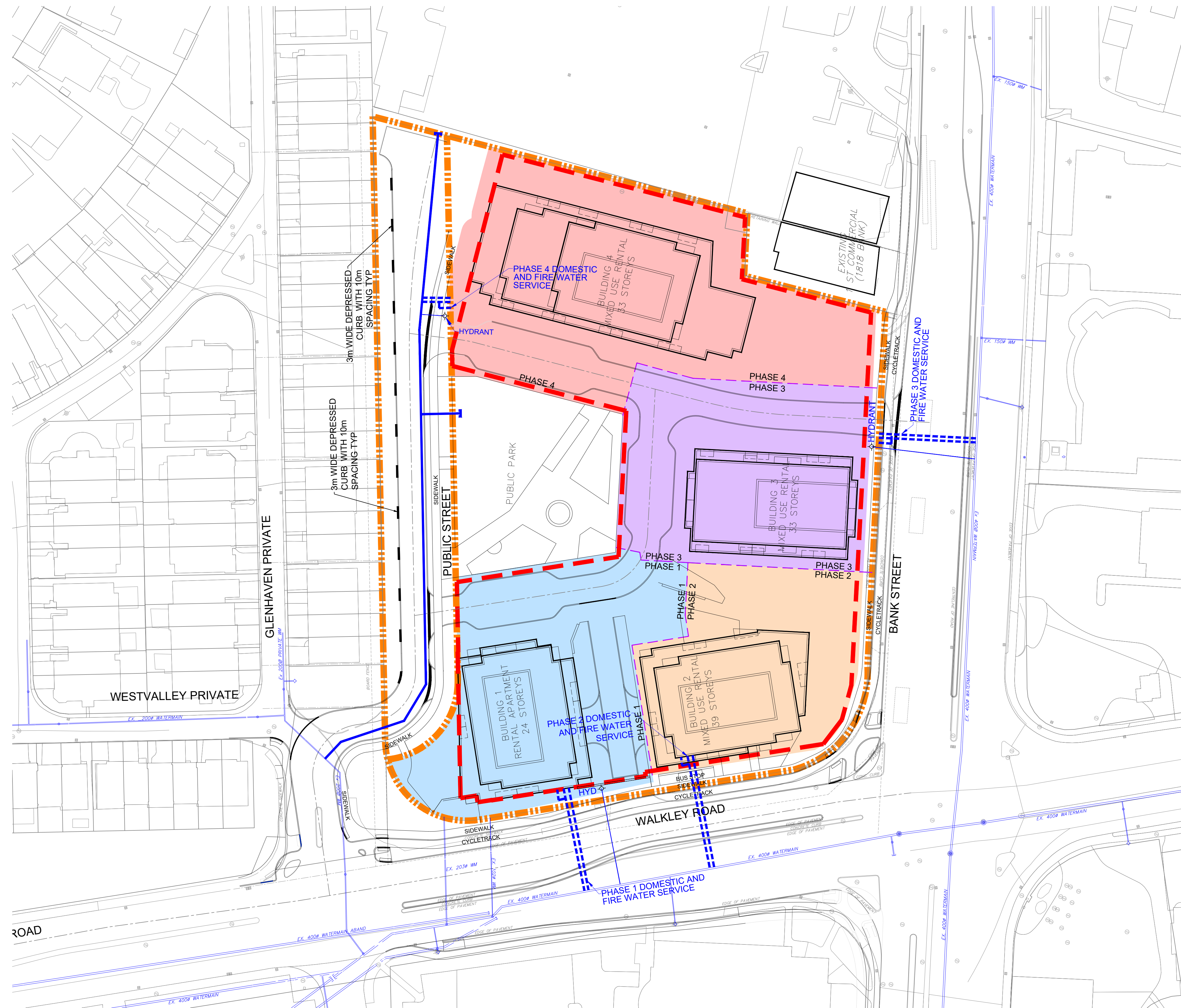
- LEGEND:**
- - - - - SITE BOUNDARY
 - - - - - SANITARY TRIBUTARY BOUNDARY
 - PROPOSED SANITARY MANHOLE
 - - - - - CIVIL SANITARY SERVICING
 - - - - - MECHANICAL SANITARY SERVICING
 - 0.11 SANITARY DRAINAGE AREA
 - 0 NUMBER OF UNITS
 - MH 1A TOTAL POPULATION
 - MH 2A UPSTREAM MANHOLE
 - MH 3A DOWNSTREAM MANHOLE
 - - - - - EXISTING SANITARY SERVICING
 - - - - - LIMITS OF UNDERGROUND PARKING GARAGE



120 Iber Road, Unit 203
 Stittsville, ON K2S 1E9
 TEL: (613) 836-0856
 FAX: (613) 836-7183
 www.DSEL.ca

BGO - 1822 BANK ST
SANITARY SERVICING PLAN
 CITY OF OTTAWA

PROJECT No. :	23-1369
SCALE	1:500
DATE:	FEBRUARY 2026
DRAWING No.	6



NOTE:
 HYDRANTS SHALL BE INSTALLED
 ALONG WEST SIDE OF BANK
 STREET AND NORTH SIDE OF
 WALKLEY ROAD

- LEGEND:**
- - - - - SITE BOUNDARY
 - PROPOSED LOCAL WATERMAIN
 - - - - - EXISTING WATERMAIN
 - - - - - LIMITS OF UNDERGROUND PARKING GARAGE

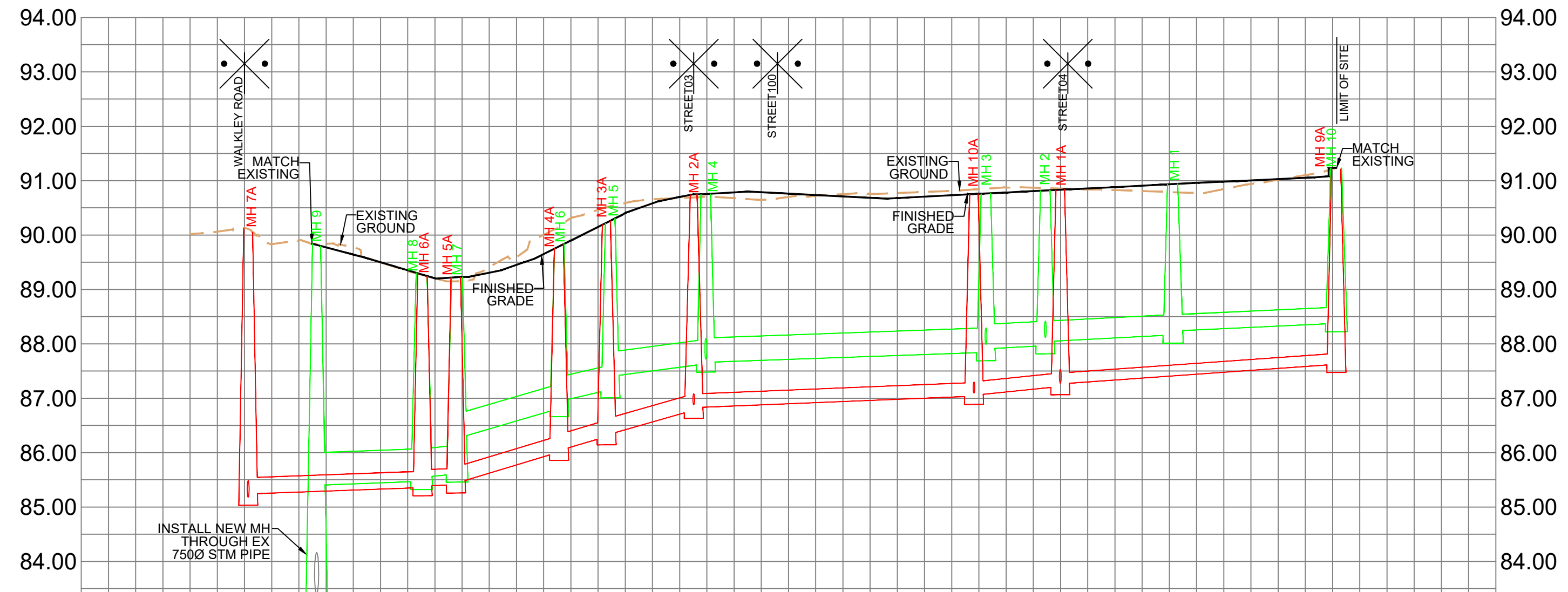


120 Iber Road, Unit 203
 Stittsville, ON K2S 1E9
 TEL: (613) 836-0856
 FAX: (613) 836-7183
 www.DSEL.ca

BGO - 1822 BANK ST
WATERMAIN SERVICING PLAN
 CITY OF OTTAWA

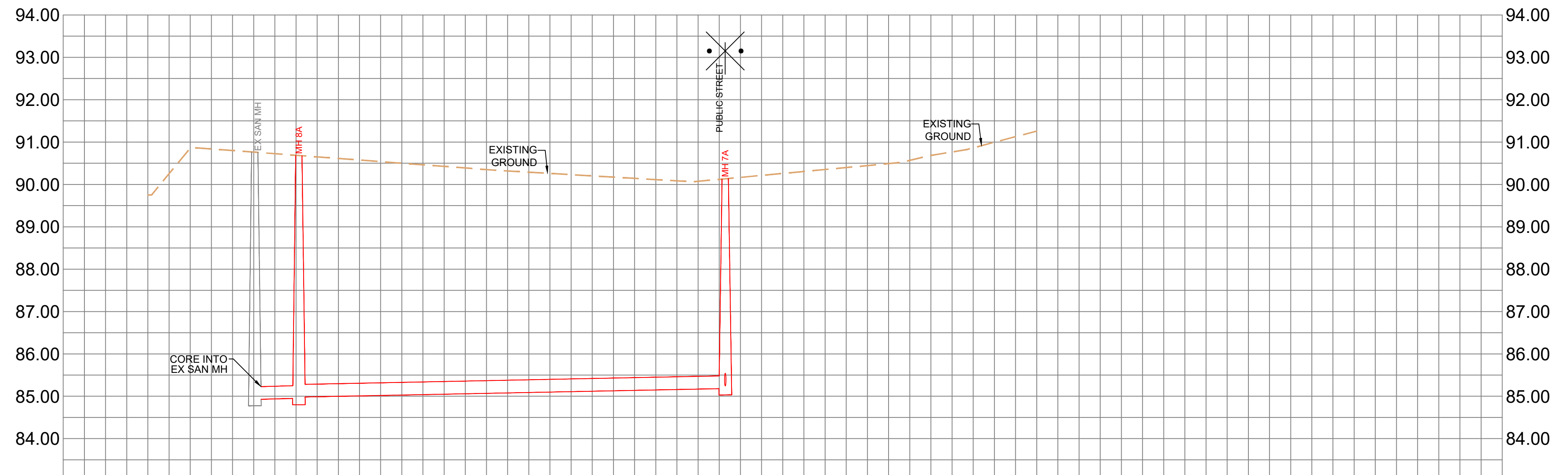
PROJECT No. :	23-1369
SCALE	1:500
DATE:	FEBRUARY 2026
DRAWING No.	7

PUBLIC STREET



SANITARY INVERT	SW 85.182 NW 85.242	3000 SAN 32.5 @ 0.35%	SE 85.356 N 85.396 NE 84.49	3000 SAN 19.0 @ 3.00%	SW 86.009 N 86.039	3000 SAN 294	SE 87.036 NW 87.096 N 87.156	2500 SAN 51.5 @ 0.40%	SE 87.036 NW 87.096 N 87.156	2000 SAN 51.0 @ 0.70%	N 87.623	SANITARY INVERT	
STORM INVERT	SE 87.41 NW 85.400	6000 STM 20.5 @ 0.35%	SE 85.472 N 85.547 S 85.607 NE 86.263	4500 STM 19.5 @ 2.80%	SW 86.949 N 86.979	4500 STM 324	SE 87.641 NW 87.691 N 87.741	4500 STM 51.5 @ 0.35%	SE 87.641 NW 87.691 N 87.741	3750 STM 23.5 @ 0.50%	S 88.162 S 88.237	3000 STM 30.5 @ 0.45%	STORM INVERT
PROPOSED GRADES	90.134	89.818	89.272 88.272 88.224	89.570	89.683	89.671	89.836 90.750	90.413	90.413	90.781	91.080	91.080	PROPOSED GRADES
CENTERLINE CHAINAGE	0+000.680	0+013.261	0+032.563 0+032.759 0+033.076	0+057.803	0+065.546 0+067.234	0+084.809	0+134.051 0+136.232	0+143.206 0+143.959	0+170.551	0+200.685	0+200.685	0+200.685	CENTERLINE CHAINAGE

WALKLEY ROAD



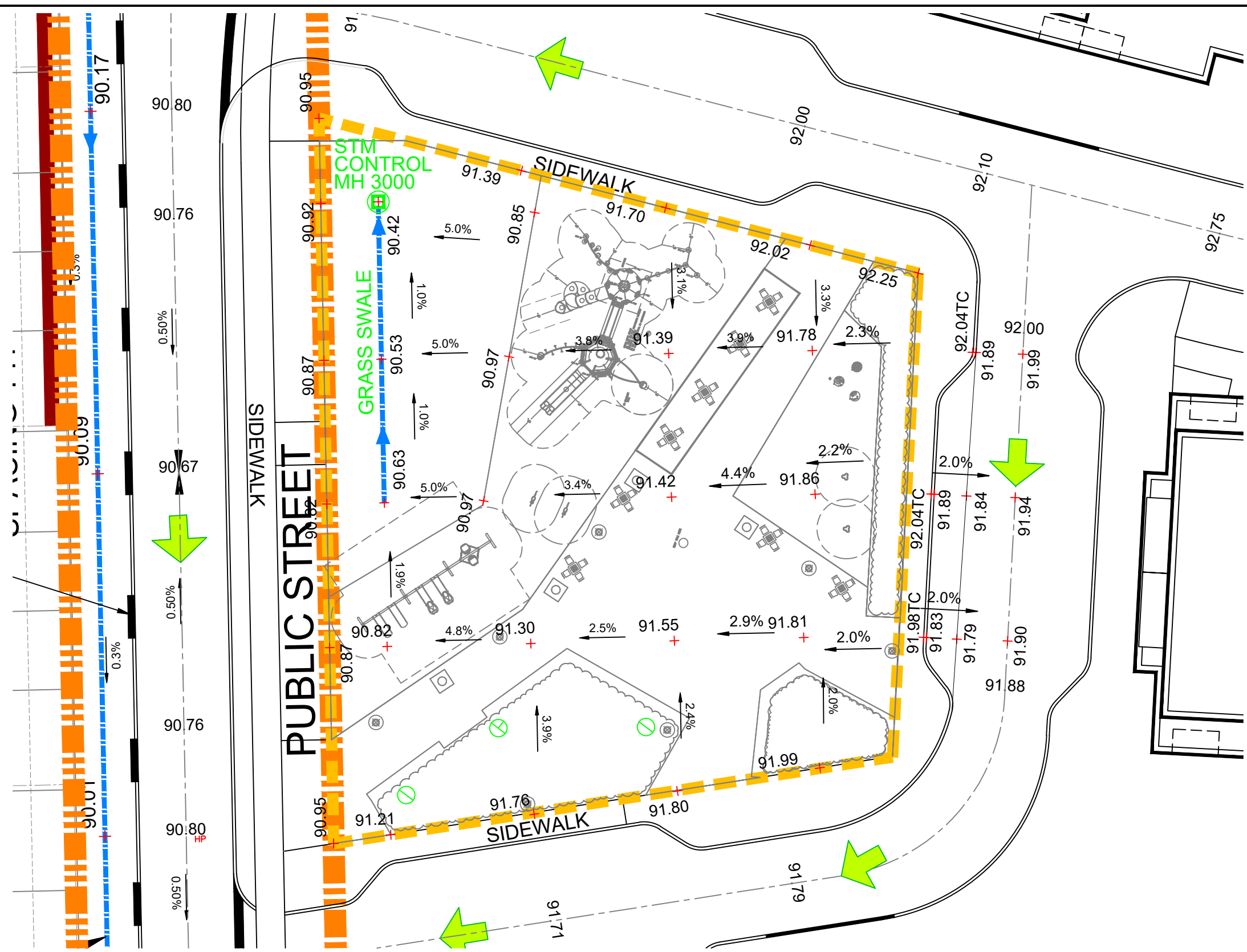
SANITARY INVERT	NE 84.926 SW 84.951 NE 84.991	3000 SAN 100.5 @ 0.20%	SW 85.182 NW 85.242	SANITARY INVERT
STORM INVERT	3000 SAN 12.5 @ 0.20%	STORM INVERT		STORM INVERT
PROPOSED GRADES	90.761 90.683	90.683	90.134	PROPOSED GRADES
CENTERLINE CHAINAGE	0+015.266 0+026.675	0+026.675	0+128.415	CENTERLINE CHAINAGE



120 Iber Road, Unit 203
Stittsville, ON K2S 1E9
TEL: (613) 836-0856
FAX: (613) 836-7183
www.DSEL.ca

BGO - 1822 BANK ST
PROFILES
CITY OF OTTAWA

PROJECT No. : 23-1369
SCALE H=1:750 / V=1:75
DATE: FEBRUARY 2026
DRAWING No. 8



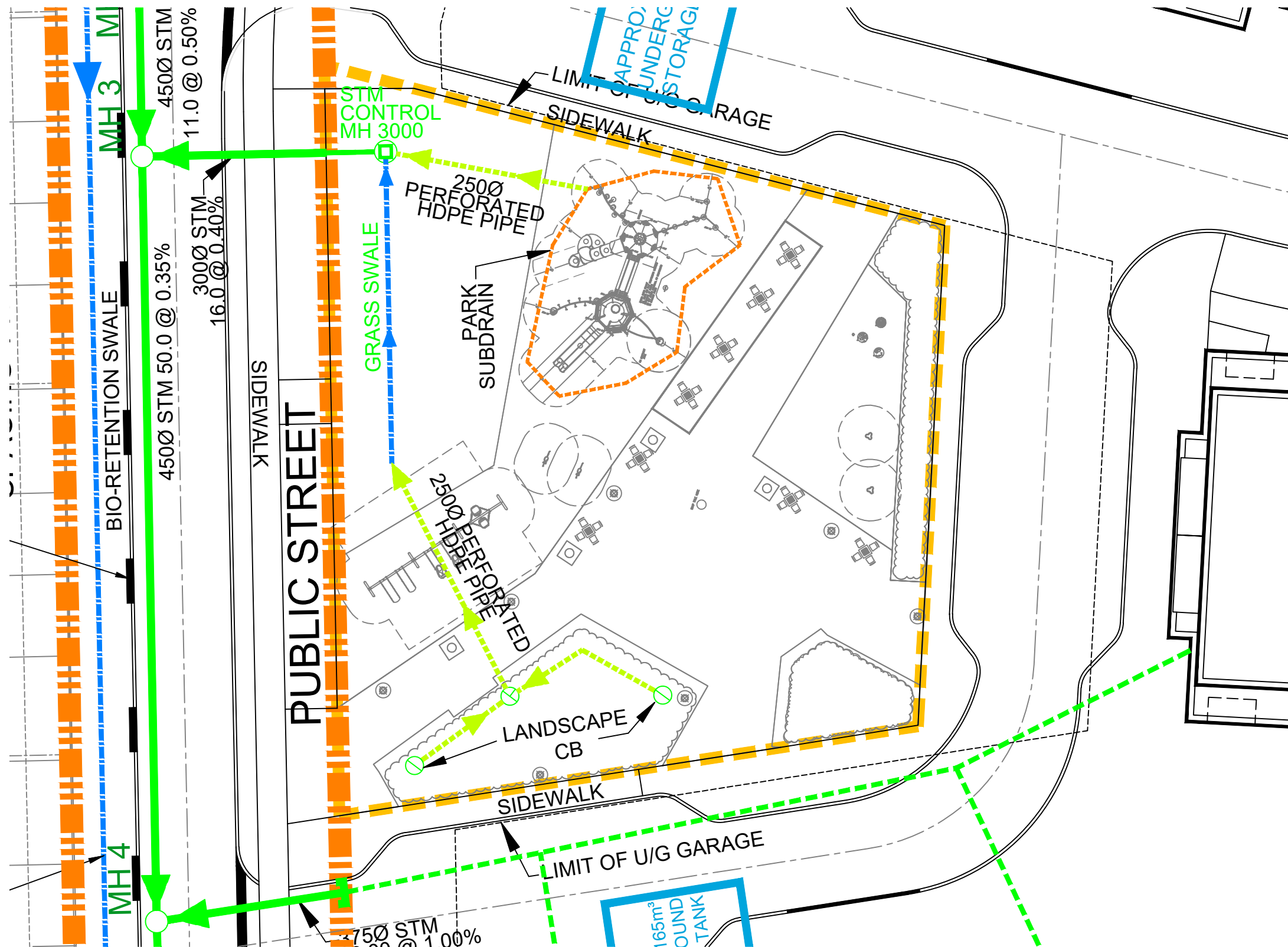
- LEGEND:**
- PARK BOUNDARY
 - STORM OVERLAND FLOW ARROW
 - 89.90** PROPOSED ELEVATION
 - SLOPE ARROW
 - PROPOSED STORM MANHOLE
 - LANDSCAPE CB



120 Iber Road, Unit 103
 Stittsville, ON K2S 1E9
 TEL: (613) 836-0856
 FAX: (613) 836-7183
 www.DSEL.ca

**BGO - 1822 BANK ST
 PARK CONCEPTUAL GRADING PLAN
 CITY OF OTTAWA**

PROJECT No.:	23-1369
SCALE:	1:300
DATE:	FEBRUARY 2026
FIGURE:	9



- LEGEND:**
- PARK BOUNDARY
 - PROPOSED STORM MANHOLE
 - ⊕ LANDSCAPE CB
 - CIVIL STORM SERVICING
 - - - MECHANICAL STORM SERVICING
 - · - · - 2500 PERFORATED HDPE PIPE



120 Iber Road, Unit 103
 Stittsville, ON K2S 1E9
 TEL: (613) 836-0856
 FAX: (613) 836-7183
 www.DSEL.ca

**BGO - 1822 BANK ST
 PARK STORM MANAGEMENT PLAN
 CITY OF OTTAWA**

PROJECT No.:	23-1369
SCALE:	1:300
DATE:	FEBRUARY 2026
FIGURE:	10



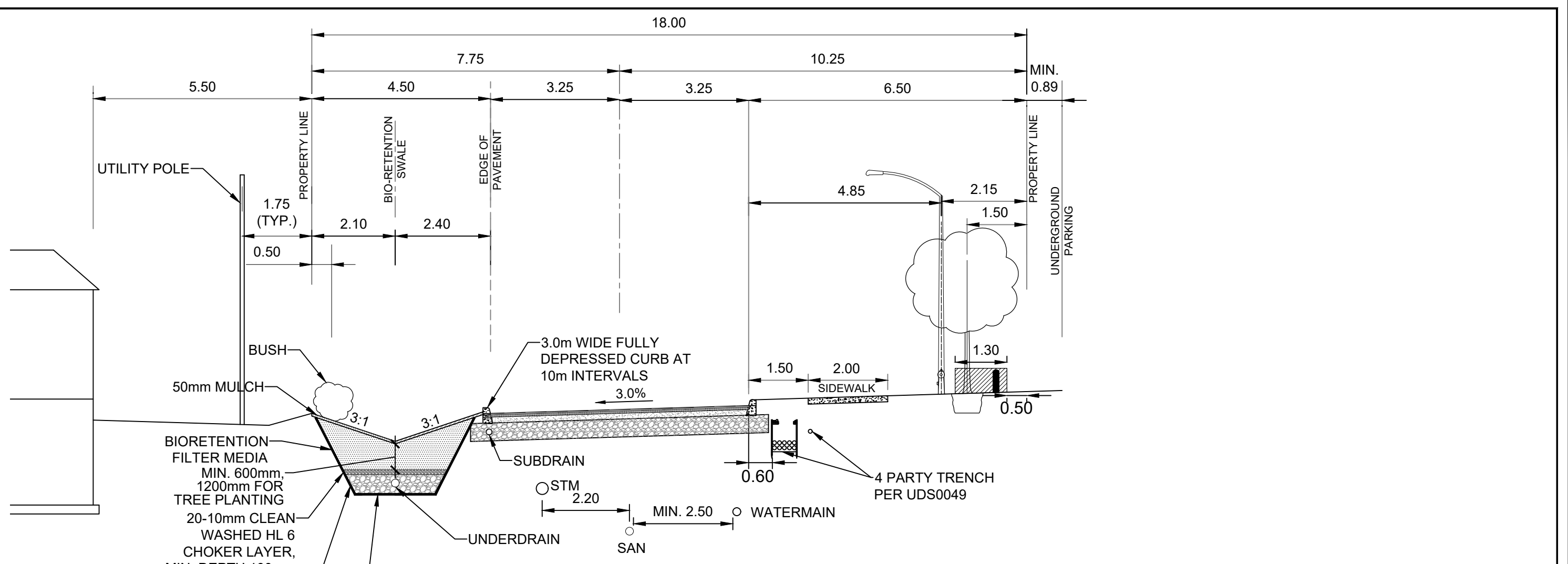
- LEGEND:**
- - - SITE BOUNDARY
 - - - PRE-DEVELOPMENT STORM TRIBUTARY BOUNDARY
 - 0.79
0.90 STORM DRAINAGE AREA
RUNOFF COEFFICIENT
 - EXISTING STORM OVERLAND FLOW ARROW
 - EXISTING STORM SERVICING



120 Iber Road, Unit 203
 Stittsville, ON K2S 1E9
 TEL: (613) 836-0856
 FAX: (613) 836-7183
 www.DSEL.ca

BGO - 1822 BANK ST
PRE-DEVELOPMENT STORM DRAINAGE AREA PLAN
 CITY OF OTTAWA

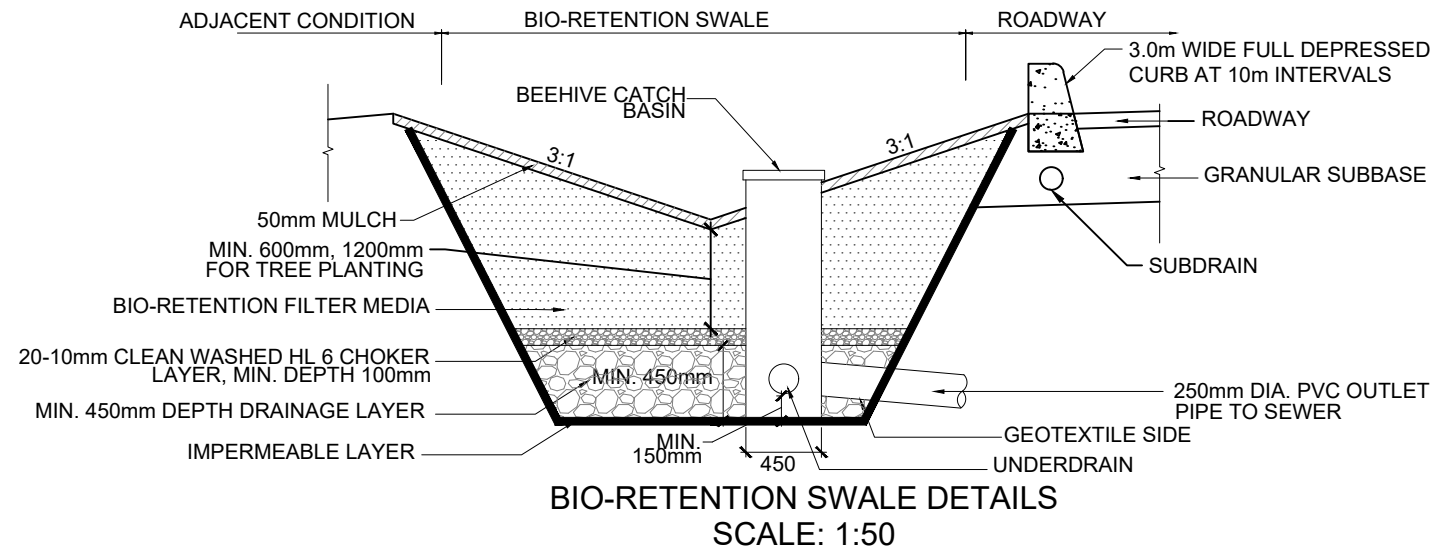
PROJECT No. :	23-1369
SCALE	1:500
DATE:	FEBRUARY 2026
DRAWING No.	11



BIORETENTION
 FILTER MEDIA
 MIN. 600mm,
 1200mm FOR
 TREE PLANTING
 20-10mm CLEAN
 WASHED HL 6
 CHOKER LAYER,
 MIN. DEPTH 100mm
 MIN. 450mm DEPTH
 DRAINAGE LAYER
 IMPERMEABLE LAYER

PUBLIC STREET TYPICAL SECTION
SCALE: 1:100

ROAD PAVEMENT STRUCTURE:
 40mm SUPERPAVE 12.5 ASPHALTIC CONCRETE
 50mm SUPERPAVE 19.0 ASPHALTIC CONCRETE
 150mm OPSS GRANULAR A CRUSHED STONE
 450mm OPSS GRANULAR B TYPE II



BIO-RETENTION SWALE DETAILS
SCALE: 1:50



120 Iber Road, Unit 103
 Stittsville, ON K2S 1E9
 TEL: (613) 836-0856
 FAX: (613) 836-7183
 www.DSEL.ca

BGO - 1822 BANK ST
TYP ROAD SECTION AND BIO-RETENTION SWALE DETAILS
CITY OF OTTAWA

PROJECT No.:	23-1369
SCALE:	AS SHOWN
DATE:	FEBRUARY 2026
FIGURE:	12