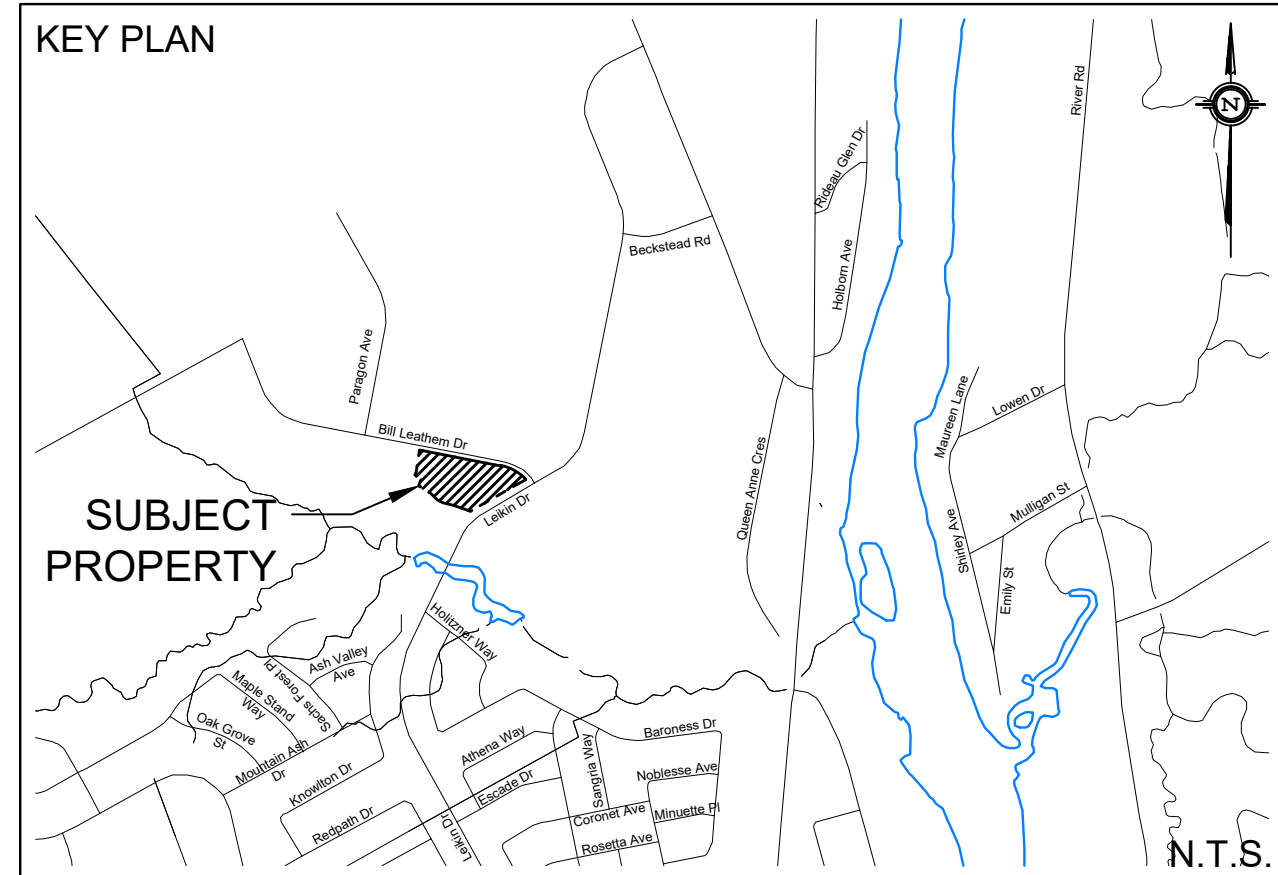


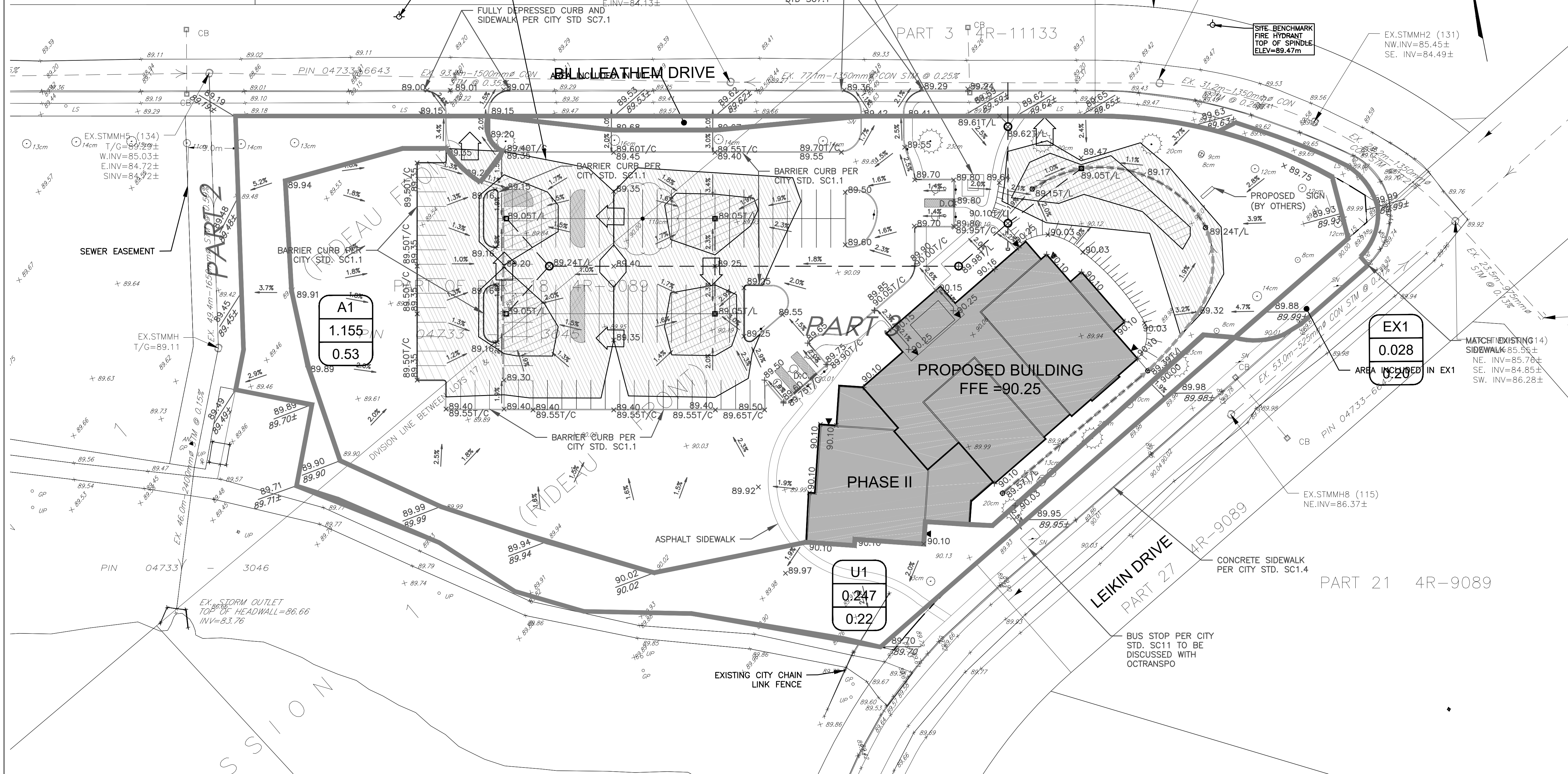
STORAGE AVAILABLE 'A1+EX1':

DESCRIPTION	Elev.(m)	Del.d(m)	Area(m ²)	V.acc(m ³)
ICD INV.	85.97	0.00	N/A	0.0
STORAGE PIPE SL	86.23	0.26	N/A	0.0
STORAGE PIPE OBV	86.50	0.26	N/A	0.0
T/L	89.05	2.55	0.4	0.30
0.15m PONDING	89.20	0.15	738.7	38.20
0.30m PONDING	89.35	0.15	3134.5	307.90
V 5-YEAR REQUIRED=	99.80m ³			
V 100-YEAR REQUIRED=	296.00m ³			
V AVAILABLE=	307.90m ³			



LEGEND

	PROPERTY LINE		PROPOSED STORM MANHOLE
	PROPOSED STORM SEWER		PROPOSED CATCH BASIN
	DRAINAGE DIVIDE		PROPOSED CB 'T'
	PROPOSED SWALE		
	PROPOSED PERFORATED SUBDRAIN		
	MAJOR SYSTEM FLOW ROUTE		
	DRAINAGE AREA ID		
	AREA IN Ha		
	RATIONAL METHOD RUNOFF COEFFICIENT		
	SURFACE PONDING AREA		
	MAX PONDING		
	INTERMEDIATE PONDING		



NOT FOR CONSTRUCTION

TOPOGRAPHIC INFORMATION
 TOPOGRAPHIC INFORMATION PROVIDED BY STANTEC GEOMATICS INC.
 PROJ. NO. 161613463-111
 DATED FEBRUARY 29, 2016

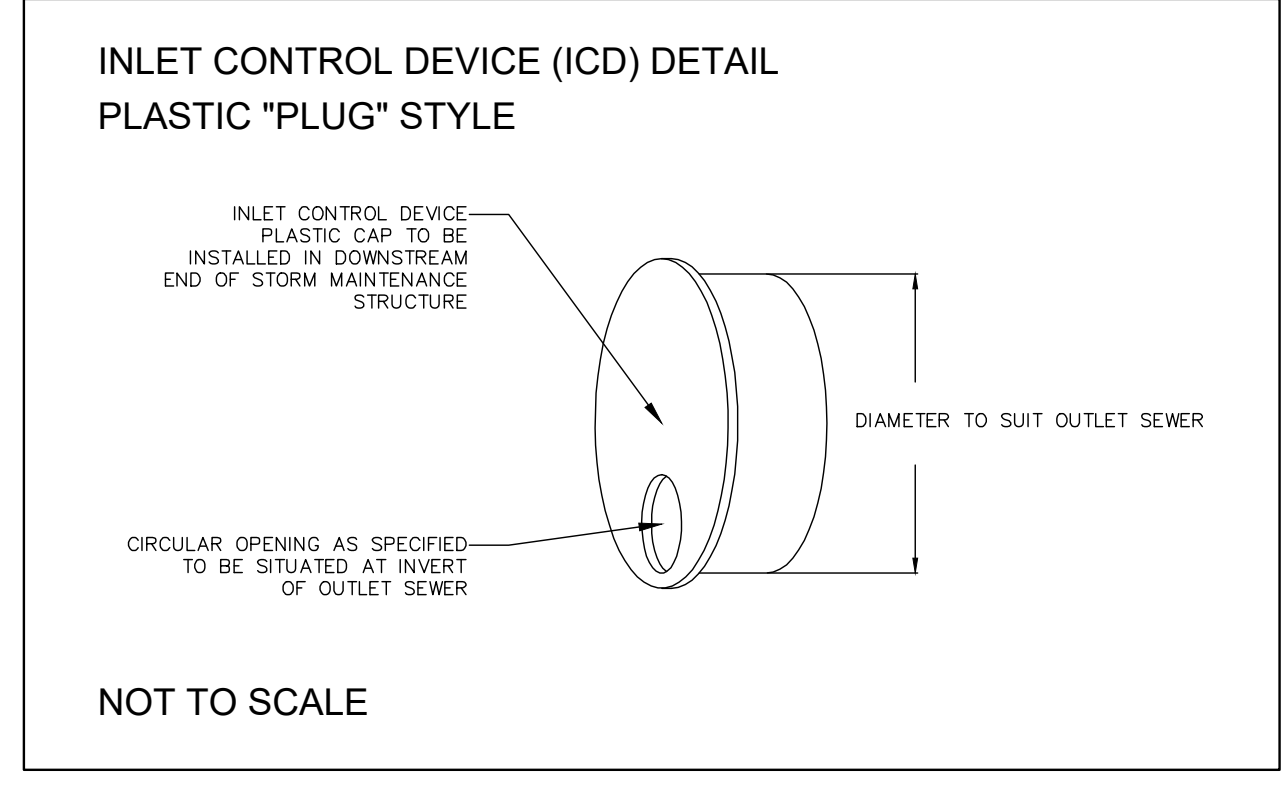
SITE PLAN INFORMATION
 SITE PLAN PROVIDED BY VANDENBERG & WILDEBOER ARCHITECTS
 PROJ. NO. 1502
 DATED APRIL 12, 2016

GEOTECHNICAL STUDY
 GEOTECHNICAL RECOMMENDATIONS PROVIDED BY PATERSON GROUP INC.
 PROJ. NO. PG3792-1
 DATED APRIL 8, 2016

SITE SERVICING AND STORMWATER MANAGEMENT STUDY
 SERVICING AND STORMWATER MANAGEMENT RECOMMENDATIONS PROVIDED BY DSEL
 PROJ. NO. 16-855
 DATED APRIL 12, 2016

BENCHMARK
 TOP OF SPINDLE OF FIRE HYDRANT LOCATED NORTH EAST OF SITE
 ELEV=89.47
 TOP OF SPINDLE OF FIRE HYDRANT LOCATED NORTH WEST OF SITE
 ELEV=89.15

No.	BY	YY.MM.DD	DESCRIPTION
2	A.J.G.	16.10.21	ISSUED FOR MUNICIPAL REVIEW
1	A.J.G.	16.04.19	ISSUED FOR MUNICIPAL REVIEW



PROJECT No. 16-855

STORMWATER MANAGEMENT PLAN
 102 BILL LEATHAM DRIVE © DSEL

THE SALVATION ARMY BARRHAVEN CHURCH
 2 Overlea Boulevard
 Toronto, Ontario, M4H 1P4

DSEL
 david schaeffer engineering ltd
 SMART SUBDIVISIONS™

120 Iser Road Unit 103
 Stittsville, Ontario, K2S 1E9
 Tel. (613) 836-0856
 Fax. (613) 836-7183
 www.DSEL.ca

DRAWN BY:	A.J.G.	CHECKED BY:	R.D.F.	DRAWING NO.	SHEET NO.
DESIGNED BY:	R.D.F.	CHECKED BY:	A.D.F.		
SCALE:	1:400	DATE:	OCTOBER 2016	SWM-2	2 of 2