

ISSUED FOR

2022-10-24	CONSTRUCTION DOCUMENTATION REVIEW
2023-01-26	50% PROGRESS
2023-02-17	PARTIAL PERMIT (PRECAST STRUCTURE)
2023-02-10	PROGRESS SET
2023-02-24	75% PROGRESS
2023-03-13	PARTIAL PERMIT (PRECAST STRUCTURE) REV 2
2023-04-10	BUILDING PERMIT
2023-03-17	CONSULTANT COORDINATION
2023-04-10	BID
E 2023-06-05	ADDENDUM #2
F 2023-06-30	ADDENDUM #4

KEYNOTE LEGEND - PER SHEET

NUMBER	KEYNOTE
101	BUILDING PRINCIPAL ENTRANCE
102	PLAZA AREA - REFER TO LANDSCAPE
105	SIDEWALK - REFER TO LANDSCAPE FOR TYPE
106	ASPHALT PAVING - HEAVY DUTY, REFER TO CIVIL
107	ASPHALT PAVING, REFER TO CIVIL
108	MECHANICAL VENTILATION STRUCTURE
109	FIRE DEPARTMENT CONNECTION
110	PAINTED LINE - CROSS WALK
111	PAINTED LINE - PARKING EXTENT
112	PAINTED LINE - BARRIER FREE SYMBOL
114	SIDEWALK - BARRIER FREE RAMP WITH TACTILE STRIPS
117	WASTE, RECYCLE, ORGANICS ROOM ENTRANCE
119	PROPERTY LINE
120	BUILDING SETBACK LINE
122	SITE ENTRANCE - PEDESTRIAN
128	ELECTRIC VEHICLE CHARGING STATION
131	EXISTING SIDEWALK
132	EXISTING ROADWAY
136	ELECTRICAL - LIGHTING SYSTEM
137	FIRE HYDRANT
139	LOW PROFILE CONCRETE WHEEL STOP
142	SOFT LANDSCAPE AREA - REFER TO LANDSCAPE
143	CONCRETE CURB
144	LOADING STALL
146	PAVEMENT PATTERN TO INDICATE CROSSWALK
147	TRENCH DRAIN
148	CONCRETE FILLED STEEL BOLLARD, PAINT YELLOW
152	ASPHALT ROAD AREA OVER PARKADE
156	PARKING SIGNAGE ON POST - BARRIER FREE - REFER TO DP108
157	PARKING SIGNAGE ON POST - EXTENT OF VISITOR - SIMILAR TO DP108
158	TREE GRATE - REFER TO LANDSCAPING
159	OUTDOOR FURNITURE - REFER TO LANDSCAPE
160	BIKE RACK - REFER TO LANDSCAPE

SITE PLAN LEGEND

PROPERTY LINE	— — — — —
SETBACK LINE	- - - - -
MATCHLINE	- · - · -
SCOPE AREA	— — — — —

SUITE TYPE - BUILDING C

NAME	COUNT	PERCENTAGE
C1-A (1 BED)	10	8%
C1-B (1 BED)	5	4%
C1-C (1 BED-DEN)	8	6%
C1-E (1 BED-DEN)	8	6%
C1-F (1 BED-DEN)	2	2%
C1-G (1 BED-DEN)	1	1%
C1-H (1 BED-DEN)	4	3%
C2-A (2 BED)	10	12%
C2-B (2 BED)	1	1%
C2-C (2 BED-DEN)	12	17%
C2-D (2 BED-DEN)	8	11%
C2-E (2 BED-DEN)	3	4%
C2-F (2 BED-DEN)	2	3%
C3-A (3 BED)	9	15%

TOTAL NUMBER OF SUITES: 85

AREA GROSS - PHASE 1 BUILDINGS

Description	Area SF	Area SCM
Building A	146,743 SF	13,033 m ²
Building C	50,203 SF	4,664 m ²
TOTAL	196,946 SF	18,297 m ²

AREA GROSS - CRU

Description	Area SF	Area SCM
Building A	8,681 SF	806.48 m ²
Building C	11,743 SF	1,090.95 m ²
Building C - Restaurant	2,518 SF	233.96 m ²
TOTAL AREA	22,942 SF	2,131.39 m ²

AREA GROSS - UNDERGROUND PARKING - PHASE 1

Level	Area SF	Area SCM
LEVEL P1A (1124.707)	39,150 SF	3,637.14 m ²
LEVEL P2A (1121.354)	36,690 SF	3,408.62 m ²
LEVEL P1C (1124.707)	18,174 SF	1,688.46 m ²
TOTAL	94,014 SF	8,734.22 m ²

IMPERIAL
THIS DRAWING IS COPYRIGHTED AND MUST NOT BE REPRODUCED, OR REVISED WITHOUT WRITTEN PERMISSION. ALL DIMENSIONS ARE IN FEET AND INCHES UNLESS OTHERWISE NOTED. VERIFY DIMENSIONS. DO NOT SCALE THIS DRAWING. REPORT INCONSISTENCIES AND OMISSIONS TO THE CONSULTANT FOR CLARIFICATION BEFORE COMMENCING WITH THE WORK. DEVIATIONS FROM THE CONTRACT DOCUMENTS WITHOUT WRITTEN APPROVAL FROM THE CONSULTANT ARE SUBJECT TO CORRECTION AT THE CONTRACTOR'S EXPENSE.

ARCHITECT & PRIME CONSULTANT
DIALOG
100, 10237 - 104 STREET, EDMONTON
T5J 1S1
Tel: 780.429.1580

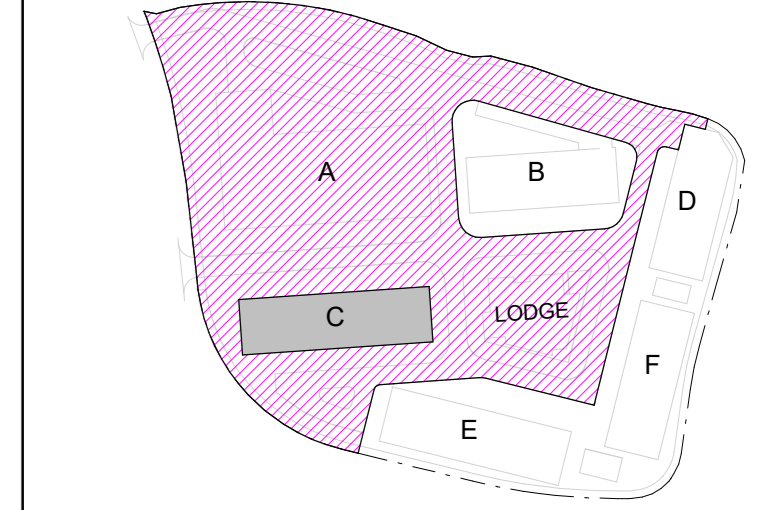
CIVIL ENGINEER
URBAN SYSTEMS
101 134 11TH AVENUE SE, CALGARY
T2G 0X5
Tel: 403.291.1193

LANDSCAPE ARCHITECT
DIALOG
134 11 AVENUE SE, SUITE 300, CALGARY
T2G 0X5
Tel: 403.254.5501

STRUCTURAL ENGINEER
PROSTOSTIK
500, 10410 102 AVENUE NW, EDMONTON
T5J 0E9
Tel: 780.423.5865

MECHANICAL ENGINEER
PMW ENGINEERING
1515199 AVENUE, EDMONTON
T5K 0E7
Tel: 780.424.5506

ELECTRICAL ENGINEER
ARROYO ENGINEERING
13167 146 ST NW UNIT 202, EDMONTON
T5L 4S8
Tel: 780.531.6100



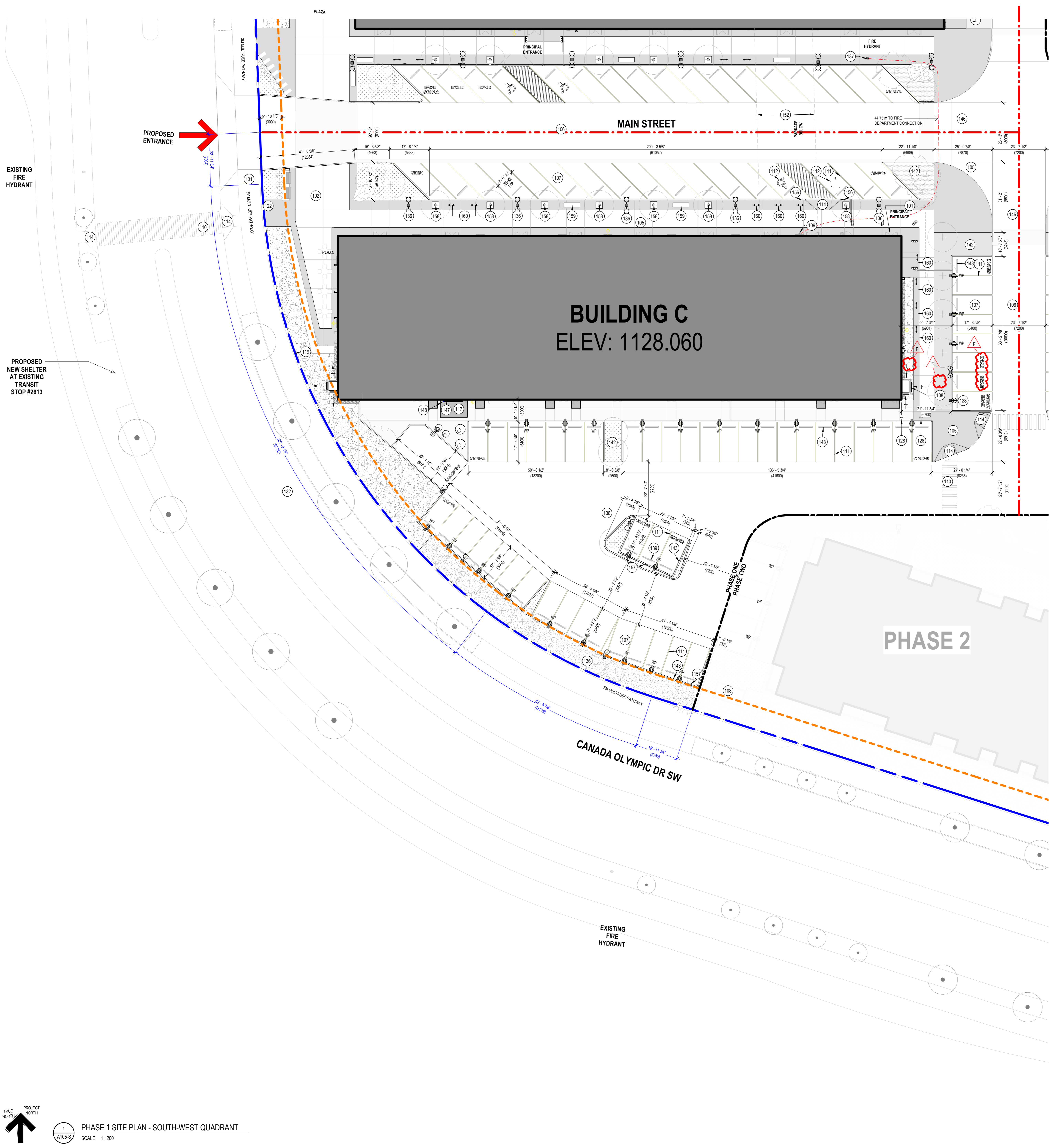
PODIUM AT
AISS'KA'POOMA

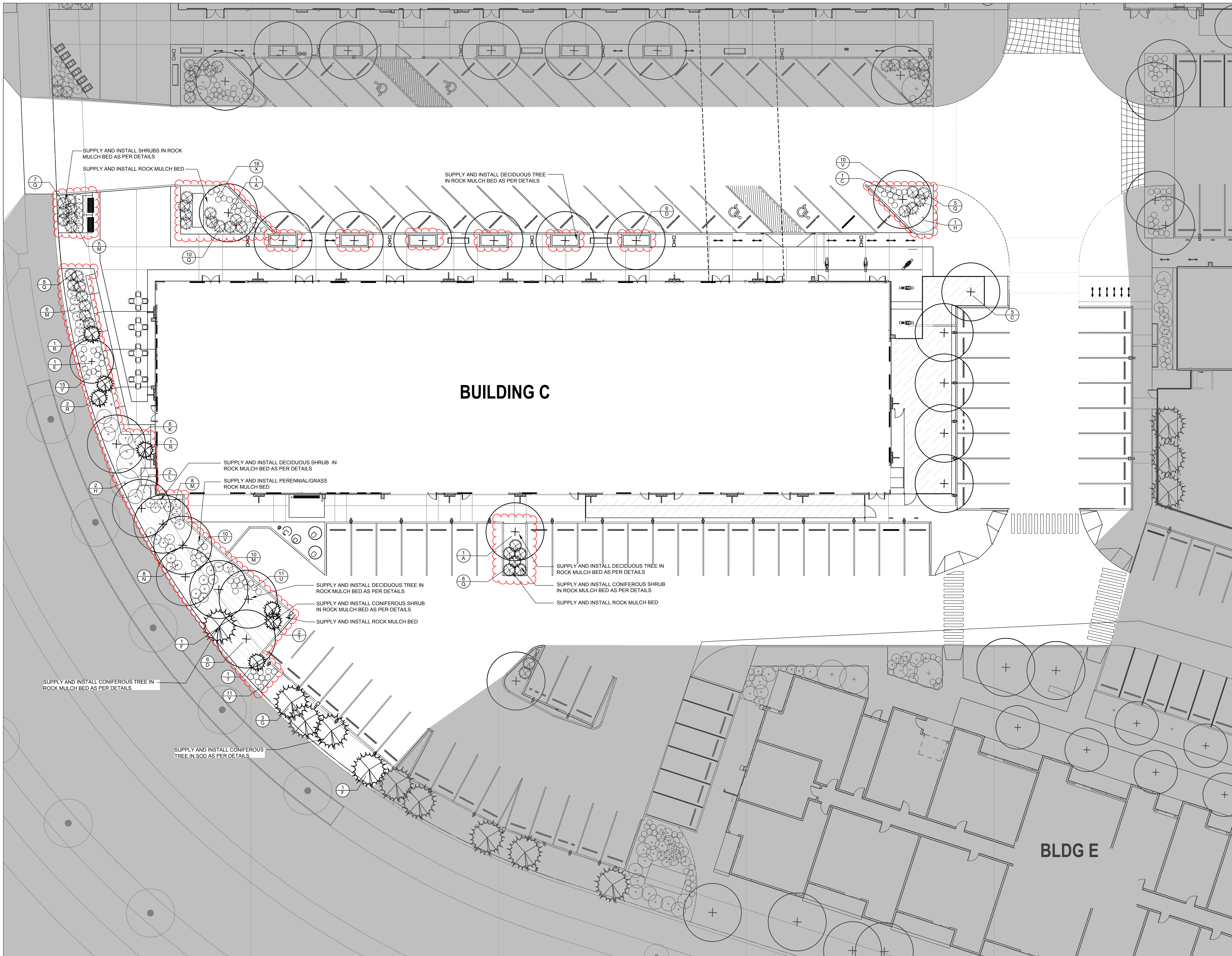
8620 CANADA OLYMPIC DRIVE SW, BLOCK 1, LOT 1,
PLAN 1910730

PHASE 1 SITE PLAN -
SOUTH-WEST
QUADRANT

DRAWN: Author CHECKED: Checker
PLOT DATE: 7/5/2023 4:09:45 PM

A105-S





LEGEND

PROPERTY LINE

EXISTING TREES TO REMAIN

PROPOSED DECIDUOUS TREES

PROPOSED CONIFEROUS TREES

PROPOSED DECIDUOUS SHRUBS

PROPOSED CONIFEROUS SHRUBS

PROPOSED PERENNIAL/GRASS

TOPSOIL AND SOD

FESCUE SOD

ROCK MULCH BED - COURSE

ROCK MULCH BED - FINE

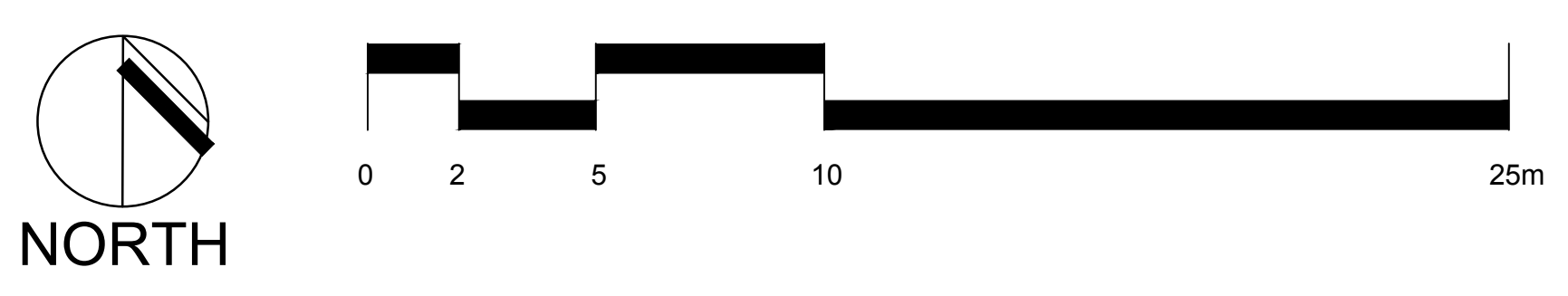
ARTIFICIAL TURF

PLANT LIST - THIS PAGE

KEY	QTY	COMMON NAME/SCIENTIFIC NAME	SIZE	REMARKS
DECIDUOUS TREES				
A	2	WHITE BIRCH / BETULA PAPPYRIFERA	65 mm cal.	SPECIMEN, W.B. MACHINE DUG WITH MIN. 10 BRANCHES IN WELL BRANCHED HEAD, STRAIGHT TRUNK, MIN. HT. 4.5m, BRANCHING HT. 1.5m.
B	0	PATMORE ASH / FRAXINUS PENNSYLVANICA "PATMORE"	75 mm cal.	SPECIMEN, W.B. MACHINE DUG WITH MIN. 10 BRANCHES IN WELL BRANCHED HEAD, STRAIGHT TRUNK, MIN. HT. 4.5m, BRANCHING HT. 1.5m.
C	6	PRAIRIE SPIRE GREEN ASH / FRAXINUS PENNSYLVANICA "PRIDE"	75 mm cal.	SPECIMEN, W.B. MACHINE DUG WITH MIN. 10 BRANCHES IN WELL BRANCHED HEAD, STRAIGHT TRUNK, MIN. HT. 4.5m, BRANCHING HT. 1.5m.
D	12	TREMBLING ASPEN / POPULUS TREMULOIDES	65 mm cal.	SPECIMEN, W.B. MACHINE DUG WITH MIN. 10 BRANCHES IN WELL BRANCHED HEAD, STRAIGHT TRUNK, MIN. HT. 6.0m, BRANCHING HT. 1.5m.
E	1	MAYDAY / PRUNUS PADUS	65 mm cal.	SPECIMEN, W.B. MACHINE DUG WITH MIN. 10 BRANCHES IN WELL BRANCHED HEAD, STRAIGHT TRUNK, MIN. HT. 6.0m, BRANCHING HT. 1.5m.
CONIFEROUS TREES				
F	2	MOUNTAIN PINE / PINUS UNICATA	3.0m ht.	SPECIMEN, W.B. MACHINE DUG WITH SINGLE UPRIGHT LEADER, STRAIGHT TRUNK, WELL BRANCHED FULL FORM.
G	3	COLORADO GREEN SPRUCE / PICEA PUNGENS	1.8m ht.	SPECIMEN, W.B. MACHINE DUG WITH SINGLE UPRIGHT LEADER, STRAIGHT TRUNK, WELL BRANCHED FULL FORM.
DECIDUOUS SHRUBS				
H	3	SASKATOON BERRY / AMELANCHIER ALNIFOLIA	#5 CONTAINER	SPECIMEN, CONTAINER GROWN, WITH MINIMUM 3 STALKS IN WELL BRANCHED PLANT, MIN. 900mm HT.
J	0	WOLF WILLOW (SILVER BERRY) / ELAEAGNUS COMMUTATA	#3 CONTAINER	SPECIMEN, CONTAINER GROWN, WITH MINIMUM 3 STALKS IN WELL BRANCHED PLANT, MIN. 600mm HT.
K	6	SIBERIAN CORAL DOGWOOD / CORNUS ALBA "SIBIRICA"	#3 CONTAINER	SPECIMEN, CONTAINER GROWN, WITH MINIMUM 3 STALKS IN WELL BRANCHED PLANT, MIN. 600mm HT.
L	2	BEAKED HAZELNUT / CORYLIUS CORNUTA	#3 CONTAINER	SPECIMEN, CONTAINER GROWN, WITH MINIMUM 3 STALKS IN WELL BRANCHED PLANT, MIN. 600mm HT.
M	29	SHRUBBY CINQUEFOIL / DASYPHORA FRUTICOSA	#2 CONTAINER	SPECIMEN, CONTAINER GROWN, WITH MINIMUM 3 STALKS IN WELL BRANCHED PLANT, MIN. 600mm HT.
N	8	GOOSEBERRY / RIBES OXYACANTHOIDES	#3 CONTAINER	SPECIMEN, CONTAINER GROWN, WITH MINIMUM 3 STALKS IN WELL BRANCHED PLANT, MIN. 600mm HT.
P	0	PRICKLY ROSE / ROSA ACICULARIS	#3 CONTAINER	SPECIMEN, CONTAINER GROWN, WITH MINIMUM 3 STALKS IN WELL BRANCHED PLANT, MIN. 600mm HT.
CONIFEROUS SHRUBS				
Q	36	CREeping JUNIPER / JUNIPERUS HORIZONTALIS	#3 CONTAINER	SPECIMEN, CONTAINER GROWN, WITH MINIMUM 3 STALKS IN WELL BRANCHED PLANT, MIN. 600mm HT.
R	4	ROCKY MOUNTAIN JUNIPER / JUNIPERUS SCOPULORUM	#3 CONTAINER	SPECIMEN, CONTAINER GROWN, WITH MINIMUM 3 STALKS IN WELL BRANCHED PLANT, MIN. 600mm HT.
T	3	MUDDY PINE / PINUS MUGO	#3 CONTAINER	SPECIMEN, CONTAINER GROWN, WITH MINIMUM 3 STALKS IN WELL BRANCHED PLANT, MIN. 600mm HT.
PERENNIALS/ORNAMENTAL GRASSES/VINES				
U	11	YARROW / ACHILLEA MILLEFOLIUM	#2 CONTAINER	SPECIMEN, CONTAINER GROWN, FREE OF DISEASE AND INSECTS, WELL ROOTED AND FULL FORM.
V	20	WHITE SAGEBRUSH / ARTEMISIA LUDOVICIANA	#2 CONTAINER	SPECIMEN, CONTAINER GROWN, FREE OF DISEASE AND INSECTS, WELL ROOTED AND FULL FORM.
W	0	WILD BERGAMOT / MANARDA FISTULOSA	#2 CONTAINER	SPECIMEN, CONTAINER GROWN, FREE OF DISEASE AND INSECTS, WELL ROOTED AND FULL FORM.
X	182	BROWN-EYED SUSAN / RUDBECKIA TRELOBA	#2 CONTAINER	SPECIMEN, CONTAINER GROWN, FREE OF DISEASE AND INSECTS, WELL ROOTED AND FULL FORM.
Y	26	SWEETGRASS / HIEROCHLOA AODORATA	#2 CONTAINER	SPECIMEN, CONTAINER GROWN, FREE OF DISEASE AND INSECTS, WELL ROOTED AND FULL FORM.
Z	0	VIRGINIA CREEPER / PARTHENOCCISSUS QUINQUEFOLIA	#2 CONTAINER	SPECIMEN, CONTAINER GROWN, FREE OF DISEASE AND INSECTS, WELL ROOTED AND FULL FORM.

- PLANTING NOTES**
- LOCATION OF ALL PLANT MATERIAL TO BE MARKED OUT ON SITE AND APPROVED BY CONTRACT ADMINISTRATOR PRIOR TO PLANTING.
 - PLANT SPACING, UNLESS OTHERWISE NOTED:
DECIDUOUS TREES: 6.0m MIN.
CONIFEROUS TREES: 3.0m MIN.
SHRUB SPACING:
DECIDUOUS SHRUBS: SMALL DECIDUOUS SHRUBS 600mm O.C. LARGE DECIDUOUS SHRUBS 900mm O.C.
 - ALL PLANT MATERIAL TO BE BEST QUALITY. PLANT MATERIAL TO BE REVIEWED ON SITE BY LANDSCAPE ARCHITECT ON SITE PRIOR TO PLANTING. PLANTS NOT ACCEPTABLE ARE TO BE REPLACED AND NEW PLANTS APPROVED PRIOR TO PLANTING. REPLACEMENTS ARE AT THE CONTRACTOR'S OWN COST.
 - ALL PLANTING EXCAVATIONS ARE TO BE REVIEWED AND APPROVED BY PROJECT LANDSCAPE ARCHITECT PRIOR TO PLACEMENT OF DRAINAGE COURSE, FILTER FABRIC AND/OR SOIL.
 - SHRUB BEDS AT PARKING AREA TO HAVE PLANTS SET BACK SO THAT THERE IS A 450mm WIDE MULCH EDGE ALONG CURB WITH FULL GROWTH OF PLANTS.
 - ALL PLANTING BEDS (SHRUB BED OR MULCH BED) WITH TREES MUST HAVE MINIMUM 800mm DEPTH PLANTING SOIL WHERE INDICATED ON THE DRAWINGS.
 - PLANT MATERIAL MUST BE NO. 1 GRADE NURSERY STOCK, SUPPLIED AND INSTALLED IN CONFORMANCE WITH THE LATEST EDITION OF THE CANADIAN NURSERY LANDSCAPE ASSOCIATION 'CANADIAN STANDARDS FOR NURSERY STOCK'.
 - REFER TO WRITTEN SPECIFICATIONS.

PLANTING PLAN
SCALE 1:150



number TEN
rchitectural group

Winnipeg Office: 204.942.0981
Victoria Office: 250.360.2106

architecture • interior design • planning

PODIUM AT AISSKA'POOMA - BUILDING A, B, C & LODGE
8620 CANADA OLYMPIC DRIVE SW

project
LANDSCAPE AND ROOF DECK PLANS
PLANTING PLAN

sheet title

825 St. Joseph Street
Winnipeg, MB
R2H 3A8
204-956-0396

consultant
McGowan Russell

The Alberta Association of Landscape Architects
Jacqueline Wilkie

scale: 1:300
date: JUNE 21, 2024

drawn by: NL
checked by: JW

project no.: 23-039
sheet no.: LP-L3-006