



# COPENHAGEN

## ISSUED FOR DP 2026-03-23

ARCHITECTURAL

CIVIL

LANDSCAPE

STRUCTURAL

MECHANICAL

ELECTRICAL



#300 - 1410 1st Street SW, Calgary, Alberta T2R 0V8  
 bus: (403) 287-9960 info@ckarch.ca



### REVISED DP DRAWINGS

Architectural		
1	A0	TITLE PAGE, LIST OF CONSULTANTS, DRAWING INDEX
	A01	SITE SURVEY
	A02	SITE PHOTOS
	A03	BLOCK PLAN
	A1.0	SITE PLAN
1	A1.1	SCHEDULES & STATS
	A1.2	SITE SECTIONS THROUGH CRUs
	A1.5	PARKADE RAMP PLAN & SECTION
1	A2.0	PARKADE PLAN - LEVEL P2
	A2.1	PARKADE PLAN - LEVEL P1
	A2.2	MAIN FLOOR PLAN
	A2.3	2ND FLOOR PLAN
	A2.4	TYPICAL FLOOR PLAN
1	A2.7	ROOF PLAN
	A3.0	EAST ELEVATION
	A3.1	NORTH ELEVATION
	A3.2	SOUTH ELEVATION
	A3.3	WEST ELEVATION
1	A3.6	3D VIEWS
	A4.0	BUILDING SECTIONS
	A4.1	BUILDING SECTIONS
Landscape		
1	DP-L1	LANDSCAPE PLAN
	DP-L2	ROOFTOP AMENITY PLAN
Electrical		
	DP-EL1	DP ELECTRICAL SITE PLAN
	DP-EL2	DP ELECTRICAL ELEVATIONS
	DP-EL3	DP ELECTRICAL ELEVATIONS
	DP-EL4	DP SITE PLAN POINT BY POINT

GENERAL NOTES  
 This drawing and all its contents are protected by copyright, and shall not be reproduced, in whole or in part without the expressed written consent of Casola Koppe Architects Ltd. These drawings are not to be scaled. All dimensions are to face of stud or sheathing unless noted otherwise. Contractor must verify all dimensions, drawings, details and specifications. Any discrepancies are to be reported to Casola Koppe Architects Ltd. prior to proceeding with work; this includes any errors or omissions.

REVISIONS

Revision Schedule		
Number	Date (yy/mm/dd)	Description
1	2025/02/24	ISSUED FOR DP
2	2025/06/26	ISSUED FOR DTR1
3	2025/09/18	ISSUED FOR DTR2
7	2026/03/23	ISSUED FOR DP 2

PERMIT TO PRACTICE

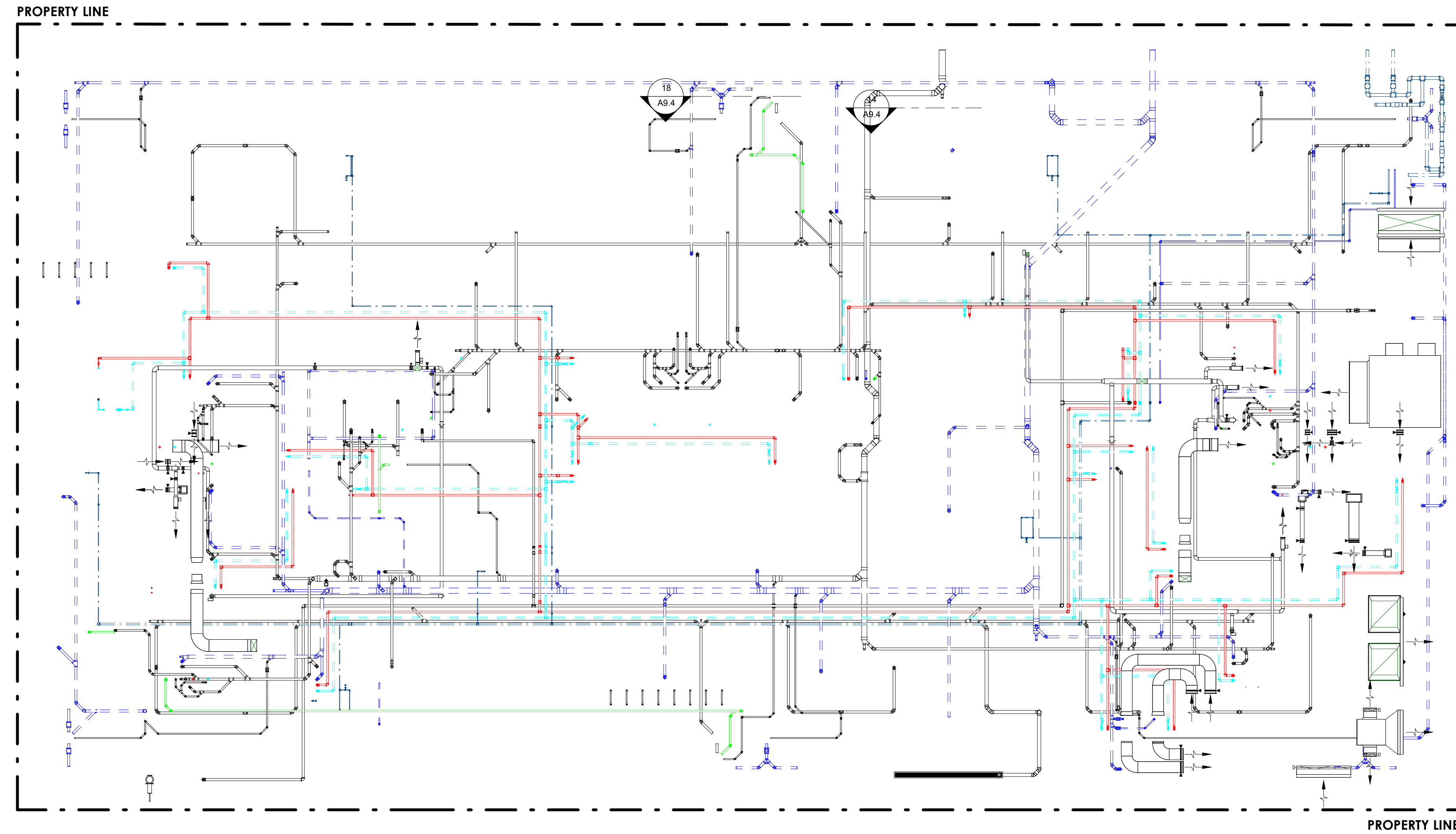
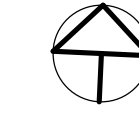
STAMP



PROJECT NAME AND ADDRESS  
**Copenhagen Block**  
 735 11TH AVE SW, CALGARY, AB  
 LOTS 3-11 & WESTERLY 14.85 FEET OF LOT  
 12, BLOCK 72, PLAN SA1

DRAWING  
**TITLE PAGE, LIST OF CONSULTANTS, DRAWING INDEX**

DRAWN BY Author	JOB NO. 2421	Building Permit #
CHECKED BY Checker		SHEET
ISSUE DATE (yy/mm) 2025/02		<b>A0</b>
SCALE AS NOTED		



1  
A01 SITE SURVEY  
1 : 150

GENERAL NOTES  
This drawing and all its contents are protected by copyright, and shall not be reproduced, in whole or in part without the expressed written consent of Casola Koppe Architects Ltd. These drawings are not to be scaled. All dimensions are to face of stud or sheathing unless noted otherwise. Contractor must verify all dimensions, drawings, details and specifications. Any discrepancies are to be reported to Casola Koppe Architects Ltd. prior to proceeding with work; this includes any errors or omissions.

REVISIONS

Revision Schedule		
Number	Date (yy/mm/dd)	Description
1	2025/02/24	ISSUED FOR DP
2	2026/03/23	ISSUED FOR DP 2

PERMIT TO PRACTICE

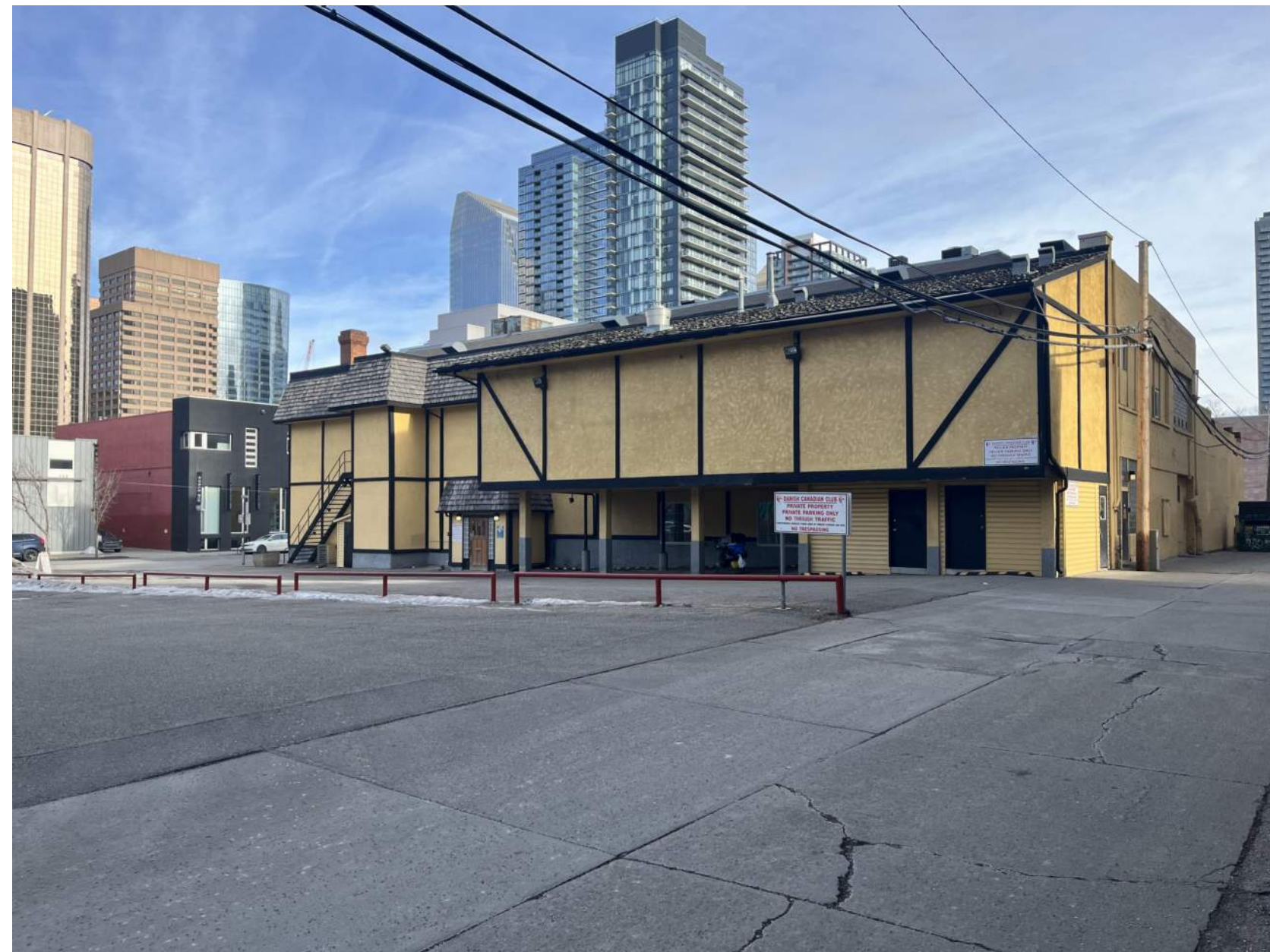
STAMP

ARCHITECT  
**casola koppe**  
 ARCHITECTS  
 Suite 300, 1410 1st. street SW, Calgary AB T2R 0V8  
 P 403.287.9960 F 403.287.9962 info@ckarch.ca

PROJECT NAME AND ADDRESS  
**Copenhagen Block**  
 735 11TH AVE SW, CALGARY, AB  
 LOTS 3-11 & WESTERLY 14.85 FEET OF LOT  
 12, BLOCK 72, PLAN SA1

DRAWING  
**SITE SURVEY**

DRAWN BY Author	JOB NO. 2421	Building Permit #
CHECKED BY Checker	ISSUE DATE (yy/mm) 2025/02	SHEET
SCALE AS NOTED	<b>A01</b>	



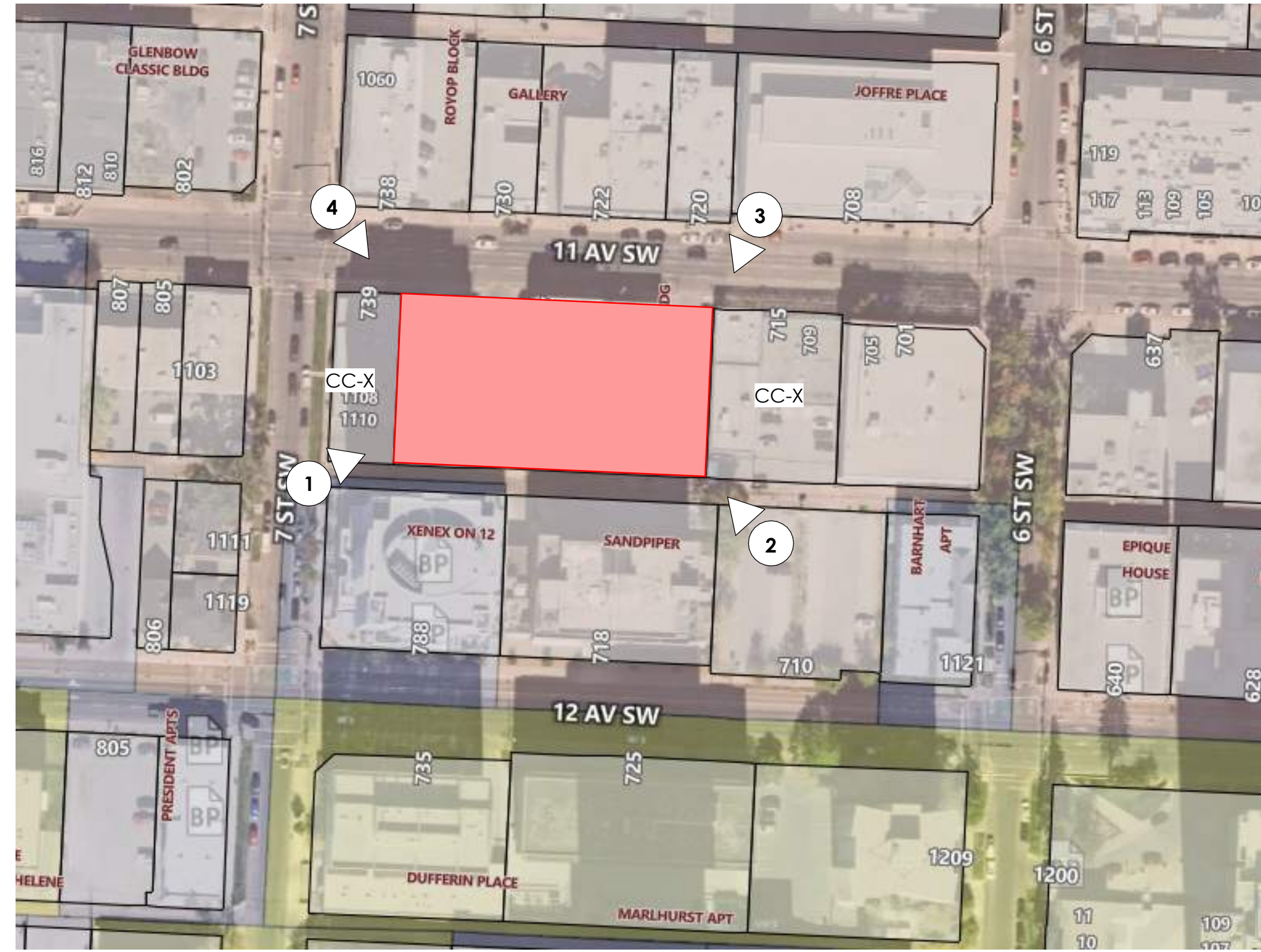
1. SOUTHWEST CORNER VIEW



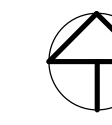
2. SOUTHEAST CORNER VIEW



2. SOUTHEAST CORNER VIEW



AERIAL PLAN



3. NORTHEAST CORNER VIEW



4. NORTHWEST CORNER VIEW

GENERAL NOTES  
 This drawing and all its contents are protected by copyright, and shall not be reproduced, in whole or in part without the expressed written consent of Casola Koppe Architects Ltd. These drawings are not to be scaled. All dimensions are to face of stud or sheathing unless noted otherwise. Contractor must verify all dimensions, drawings, details and specifications. Any discrepancies are to be reported to Casola Koppe Architects Ltd. prior to proceeding with work; this includes any errors or omissions.

REVISIONS

Revision Schedule		
Number	Date (yy/mm/dd)	Description
1	2025/02/24	ISSUED FOR DP
7	2026/03/23	ISSUED FOR DP 2

PERMIT TO PRACTICE

STAMP

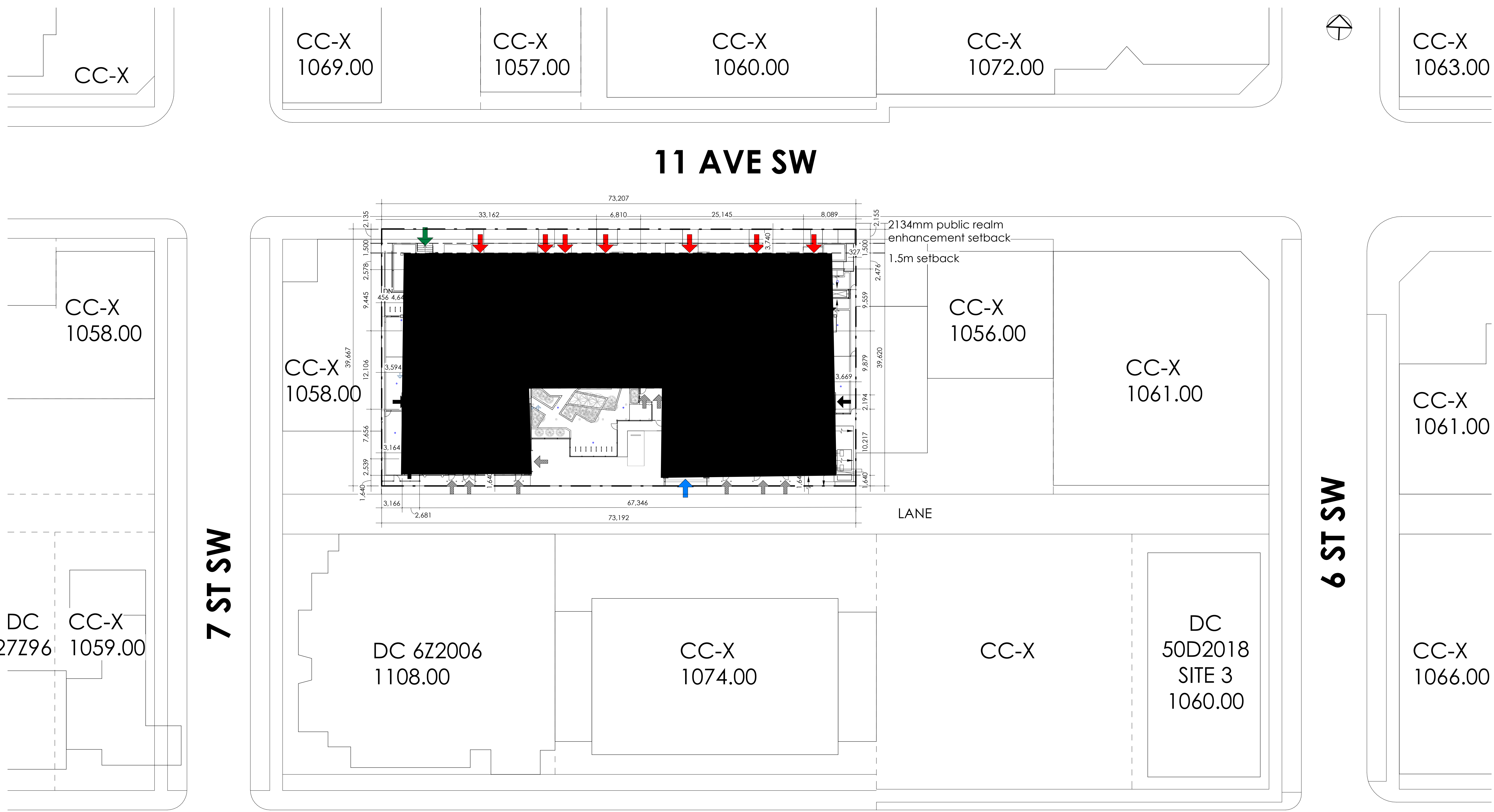
ARCHITECT  
**casola koppe**  
 ARCHITECTS  
 Suite 300, 1410 1st. street SW, Calgary AB T2R 0V8  
 P 403.287.9960 F 403.287.9962 info@ckarch.ca

PROJECT NAME AND ADDRESS  
**Copenhagen Block**  
 735 11TH AVE SW, CALGARY, AB  
 LOTS 3-11 & WESTERLY 14.85 FEET OF LOT  
 12, BLOCK 72, PLAN SA1

DRAWING  
**SITE PHOTOS**

DRAWN BY Author	JOB NO. 2421	Building Permit #
CHECKED BY Checker		SHEET
ISSUE DATE (yy/mm)		
2025/02		
SCALE AS NOTED		

**A02**



GENERAL NOTES  
 This drawing and all its contents are protected by copyright, and shall not be reproduced, in whole or in part without the expressed written consent of Casola Koppe Architects Ltd. These drawings are not to be scaled. All dimensions are to face of stud or sheathing unless noted otherwise. Contractor must verify all dimensions, drawings, details and specifications. Any discrepancies are to be reported to Casola Koppe Architects Ltd. prior to proceeding with work; this includes any errors or omissions.

REVISIONS

Revision Schedule		
Number	Date (yy/mm/dd)	Description
1	2025/02/24	ISSUED FOR DP
2	2026/03/23	ISSUED FOR DP 2

- ENTRANCE LEGEND**
- CRU ENTRANCE
  - MAIN RESIDENTIAL ENTRANCE
  - PARLADE RAMP
  - UNIT ENTRANCE
  - OTHER ENTRANCES

PERMIT TO PRACTICE

STAMP

ARCHITECT  
**casola koppe**  
 ARCHITECTS  
 Suite 300, 1410 1st. Street SW, Calgary AB T2R 0V8  
 P 403.287.9960 F 403.287.9962 info@ckarch.ca

PROJECT NAME AND ADDRESS  
**Copenhagen Block**  
 735 11TH AVE SW, CALGARY, AB  
 LOTS 3-11 & WESTERLY 14.85 FEET OF LOT  
 12, BLOCK 72, PLAN SA1

DRAWING  
**BLOCK PLAN**

DRAWN BY Author	JOB NO. 2421	Building Permit #
CHECKED BY Checker		SHEET
ISSUE DATE (yy/mm)	2025/02	
SCALE	AS NOTED	

**A03**





1 East - BP  
A3.0 1 : 96

Keynote Legend	
Key Value	Keynote Text
01	Masonry Brick - 310 Main Street Wire Cut Texture Thin Brick
02	Metal Panel - Polar White
04	Vertical Metal Panel - Polar White
05	Vertical Metal Panel - Stone Grey
07	Horizontal Metal Panel - Terra Cotta
08	Punched Windows/Doors/Sliding Doors - Black Frame/Clear Glass
09a	Decorative Metal Fence - Black with Gates
09b	Privacy Fence
10	Entry Canopy/Signage Band - Polar White Metal
11	Storefront - Black Anodized Alum. Mullions + Clear Glass + White Spandrel Glass
12	Overhead Door - Dark Grey
13	Man Door - Dark Grey
14	Balcony Railing - Black Metal Picket
15	Balcony Railing - Black Metal/Clear Glass
16	Mechanical Doghouse - Concrete
17	Bike U-Rack
19	Pergola
20	Concrete Planter
21	Metal Louvre - Dark Grey
23	Metal Flashing - Iron Ore
24	Mechanical Rooftop Screen - Metal Dark Grey
26	Decorative Band - Iron Ore Metal
27	Black Metal Planter

**GENERAL NOTES**  
This drawing and all it's contents are protected by copyright, and shall not be reproduced, in whole or in part without the expressed written consent of Casola Koppe Architects Ltd. These drawings are not to be scaled. All dimensions are to face of stud or sheathing unless noted otherwise. Contractor must verify all dimensions, drawings, details and specifications. Any discrepancies are to be reported to Casola Koppe Architects Ltd. prior to proceeding with work; this includes any errors or omissions.

**REVISIONS**

Revision Schedule		
Number	Date (yy/mm/dd)	Description
1	2025/02/24	ISSUED FOR DP
2	2025/06/26	ISSUED FOR DTR1
3	2025/09/18	ISSUED FOR DTR2
5	2025/10/09	ISSUED FOR COA
6	2026/01/30	ISSUED FOR BP
7	2026/03/23	ISSUED FOR DP 2

PERMIT TO PRACTICE

STAMP

ARCHITECT  
**casola koppe**  
ARCHITECTS  
Suite 300, 1410 1st. street SW, Calgary AB T2R 0V8  
P 403.287.9960 F 403.287.9962 info@ckarch.ca

PROJECT NAME AND ADDRESS  
**Copenhagen Block**  
735 11TH AVE SW, CALGARY, AB  
LOTS 3-11 & WESTERLY 14.85 FEET OF LOT 12, BLOCK 72, PLAN SA1

DRAWING  
**EAST ELEVATION**

DRAWN BY	JOB NO.	Building Permit #
--	2421	
CHECKED BY		SHEET
--		
ISSUE DATE (yy/mm)		
2025/02		
SCALE		
AS NOTED		

**A3.0**



2026-03-19 2:57:22 PM

Autodesk Docs://Copenhagen/Copenhagen.rvt

PROPERTY LINE

PROPERTY LINE



1  
A3.2  
South - BP  
1 : 96

Keynote Legend	
Key Value	Keynote Text
01	Masonry Brick - 310 Main Street Wire Cut Texture Thin Brick
02	Metal Panel - Polar White
04	Vertical Metal Panel - Polar White
05	Vertical Metal Panel - Stone Grey
07	Horizontal Metal Panel - Terra Cotta
08	Punched Windows/Doors/Sliding Doors - Black Frame/Clear Glass
09a	Decorative Metal Fence - Black with Gates
09b	Privacy Fence

Keynote Legend	
Key Value	Keynote Text
10	Entry Canopy/Signage Band - Polar White Metal
11	Storefront - Black Anodized Alum. Mullions + Clear Glass + White Spandrel Glass
12	Overhead Door - Dark Grey
13	Man Door - Dark Grey
14	Balcony Railing - Black Metal Picket
15	Balcony Railing - Black Metal/Clear Glass
16	Mechanical Doghouse - Concrete
17	Bike U-Rack

Keynote Legend	
Key Value	Keynote Text
19	Pergola
20	Concrete Planter
21	Metal Louvre - Dark Grey
23	Metal Flashing - Iron Ore
24	Mechanical Rooftop Screen - Metal Dark Grey
26	Decorative Band - Iron Ore Metal
27	Black Metal Planter

01	Masonry Brick - 310 Main Street Wire Cut Texture Thin Brick
02	Metal Panel - Polar White
04	Vertical Metal Panel - Polar White
05	Vertical Metal Panel - Stone Grey
07	Horizontal Metal Panel - Terra Cotta
08	Punched Windows/Doors/Sliding Doors - Black Frame/Clear Glass
09a	Decorative Metal Fence - Black with Gates
09b	Privacy Fence

10	Entry Canopy/Signage Band - Polar White Metal
11	Storefront - Black Anodized Alum. Mullions + Clear Glass + White Spandrel Glass
12	Overhead Door - Dark Grey
13	Man Door - Dark Grey
14	Balcony Railing - Black Metal Picket
15	Balcony Railing - Black Metal/Clear Glass
16	Mechanical Doghouse - Concrete
17	Bike U-Rack

19	Pergola
20	Concrete Planter
21	Metal Louvre - Dark Grey
23	Metal Flashing - Iron Ore
24	Mechanical Rooftop Screen - Metal Dark Grey
26	Decorative Band - Iron Ore Metal
27	Black Metal Planter

GENERAL NOTES  
This drawing and all its contents are protected by copyright, and shall not be reproduced, in whole or in part without the expressed written consent of Casola Koppe Architects Ltd. These drawings are not to be scaled. All dimensions are to face of stud or sheathing unless noted otherwise. Contractor must verify all dimensions, drawings, details and specifications. Any discrepancies are to be reported to Casola Koppe Architects Ltd. prior to proceeding with work; this includes any errors or omissions.

REVISIONS			
Revision Schedule			
Number	Date (yy/mm/dd)	ISSUED FOR	Description
1	2025/02/24	ISSUED FOR DP	
2	2025/06/26	ISSUED FOR DTR1	
3	2025/09/18	ISSUED FOR DTR2	
5	2025/10/09	ISSUED FOR COA	
6	2026/01/30	ISSUED FOR BP	
7	2026/03/23	ISSUED FOR DP 2	

PERMIT TO PRACTICE

STAMP

ARCHITECT  
**casola koppe**  
ARCHITECTS  
Suite 300, 1410 1st. street SW, Calgary AB T2R 0V8  
P 403.287.9960 F 403.287.9962 info@ckarch.ca

PROJECT NAME AND ADDRESS  
**Copenhagen Block**  
735 11TH AVE SW, CALGARY, AB  
LOTS 3-11 & WESTERLY 14.85 FEET OF LOT  
12, BLOCK 72, PLAN SA1

DRAWING  
**SOUTH ELEVATION**

DRAWN BY	JOB NO.	Building Permit #
Author	2421	
CHECKED BY		SHEET
Checker		
ISSUE DATE (yy/mm)	2025/02	
SCALE	AS NOTED	

**A3.2**



Level	Height
Amenity Roof	34,633
Mech Roof	34,633
T.O. ROOF	31,344
Level 10	28,245
Level 9	25,146
Level 8	22,047
Level 7	18,948
Level 6	15,850
Level 5	12,751
Level 4	9,652
Level 3	6,553
Level 2	3,492
Level 1	1050.27
Level 1a	-700

Keynote Legend	
Key Value	Keynote Text
01	Masonry Brick - 310 Main Street Wire Cut Texture Thin Brick
02	Metal Panel - Polar White
04	Vertical Metal Panel - Polar White
05	Vertical Metal Panel - Stone Grey
07	Horizontal Metal Panel - Terra Cotta
08	Punched Windows/Doors/Sliding Doors - Black Frame/Clear Glass
09a	Decorative Metal Fence - Black with Gates
09b	Privacy Fence
10	Entry Canopy/Signage Band - Polar White Metal
11	Storefront - Black Anodized Alum. Mullions + Clear Glass + White Spandrel Glass
12	Overhead Door - Dark Grey
13	Man Door - Dark Grey
14	Balcony Railing - Black Metal Picket
15	Balcony Railing - Black Metal/Clear Glass
16	Mechanical Doghouse - Concrete
17	Bike U-Rack
19	Pergola
20	Concrete Planter
21	Metal Louvre - Dark Grey
23	Metal Flashing - Iron Ore
24	Mechanical Rooftop Screen - Metal Dark Grey
26	Decorative Band - Iron Ore Metal
27	Black Metal Planter

**GENERAL NOTES**  
 This drawing and all it's contents are protected by copyright, and shall not be reproduced, in whole or in part without the expressed written consent of Casola Koppe Architects Ltd. These drawings are not to be scaled. All dimensions are to face of stud or sheathing unless noted otherwise. Contractor must verify all dimensions, drawings, details and specifications. Any discrepancies are to be reported to Casola Koppe Architects Ltd. prior to proceeding with work; this includes any errors or omissions.

REVISIONS			
Revision Schedule			
Number	Date (yy/mm/dd)	Description	
1	2025/02/24	ISSUED FOR DP	
2	2025/06/26	ISSUED FOR DTR1	
3	2025/09/18	ISSUED FOR DTR2	
5	2025/10/09	ISSUED FOR COA	
6	2026/01/30	ISSUED FOR BP	
7	2026/03/23	ISSUED FOR DP 2	

PERMIT TO PRACTICE

STAMP

ARCHITECT  
**casola koppe**  
 ARCHITECTS  
 Suite 300, 1410 1st. street SW, Calgary AB T2R 0V8  
 P 403.287.9960 F 403.287.9962 info@ckarch.ca

PROJECT NAME AND ADDRESS  
**Copenhagen Block**  
 735 11TH AVE SW, CALGARY, AB  
 LOTS 3-11 & WESTERLY 14.85 FEET OF LOT  
 12, BLOCK 72, PLAN SA1

DRAWING  
**WEST ELEVATION**

DRAWN BY Author	JOB NO. 2421	Building Permit #
CHECKED BY Checker	ISSUE DATE (yy/mm) 2025/02	SHEET
SCALE AS NOTED		<b>A3.3</b>

1 West - BP  
 A3.3 1 : 96



**GENERAL NOTES**  
 This drawing and all its contents are protected by copyright, and shall not be reproduced, in whole or in part without the expressed written consent of Casola Koppe Architects Ltd. These drawings are not to be scaled. All dimensions are to face of stud or sheathing unless noted otherwise. Contractor must verify all dimensions, drawings, details and specifications. Any discrepancies are to be reported to Casola Koppe Architects Ltd. prior to proceeding with work; this includes any errors or omissions.

**REVISIONS**

Revision Schedule		
Number	Date (yy/mm/dd)	Description
1	2025/02/24	ISSUED FOR DP
7	2026/03/23	ISSUED FOR DP 2

PERMIT TO PRACTICE

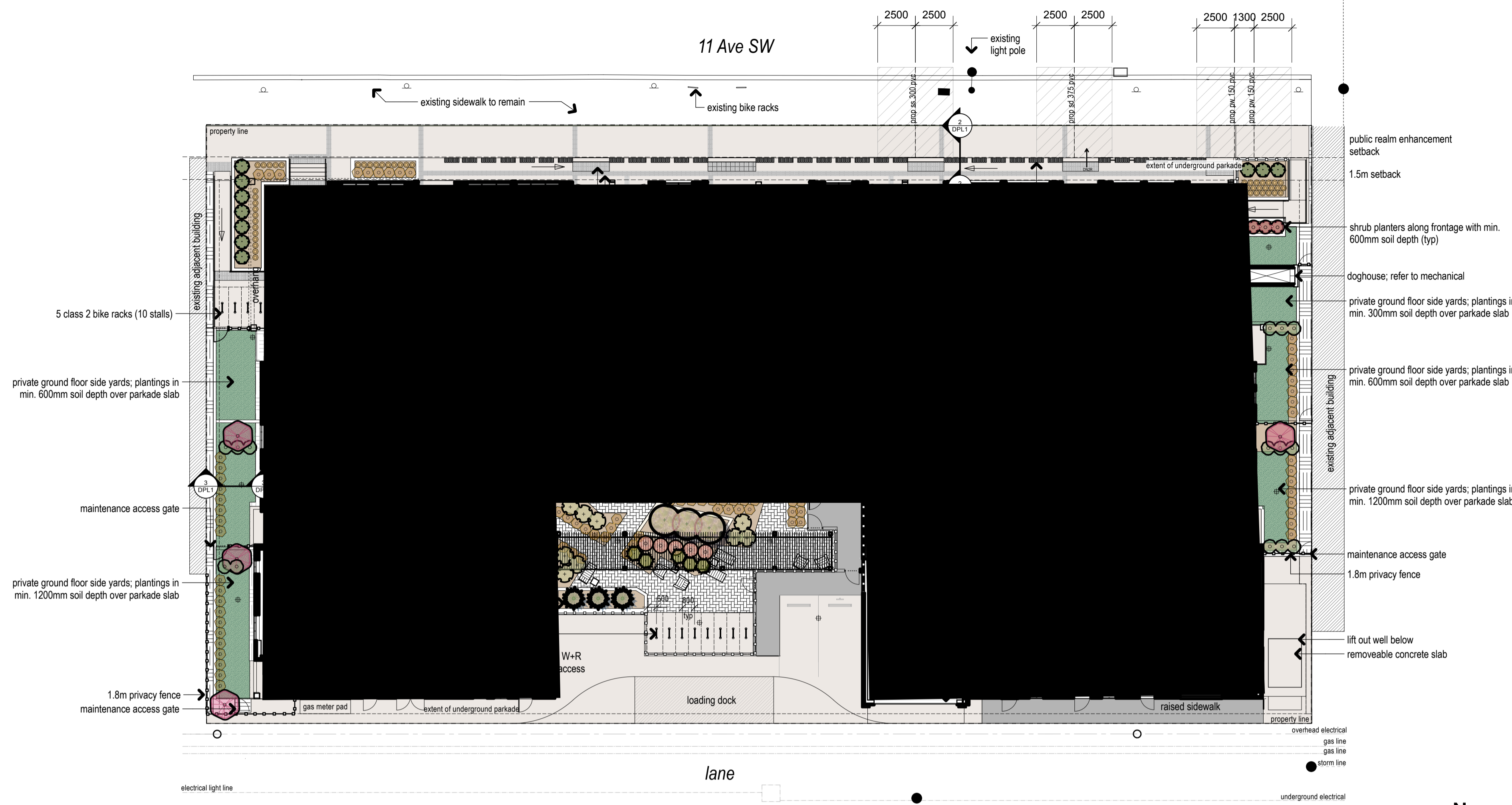
STAMP

ARCHITECT  
**casola-koppe**  
 ARCHITECTS  
 Suite 300, 1410 1st. Street SW, Calgary AB T2R 0V8  
 P 403.287.9960 F 403.287.9962 info@ckarch.ca

PROJECT NAME AND ADDRESS  
**Copenhagen Block**  
 735 11TH AVE SW, CALGARY, AB  
 LOTS 3-11 & WESTERLY 14.85 FEET OF LOT  
 12, BLOCK 72, PLAN SA1

DRAWING  
**3D VIEWS**

DRAWN BY Author	JOB NO. 2421	Building Permit #
CHECKED BY Checker	ISSUE DATE (yy/mm) 2025/02	SHEET
SCALE AS NOTED		<b>A3.6</b>



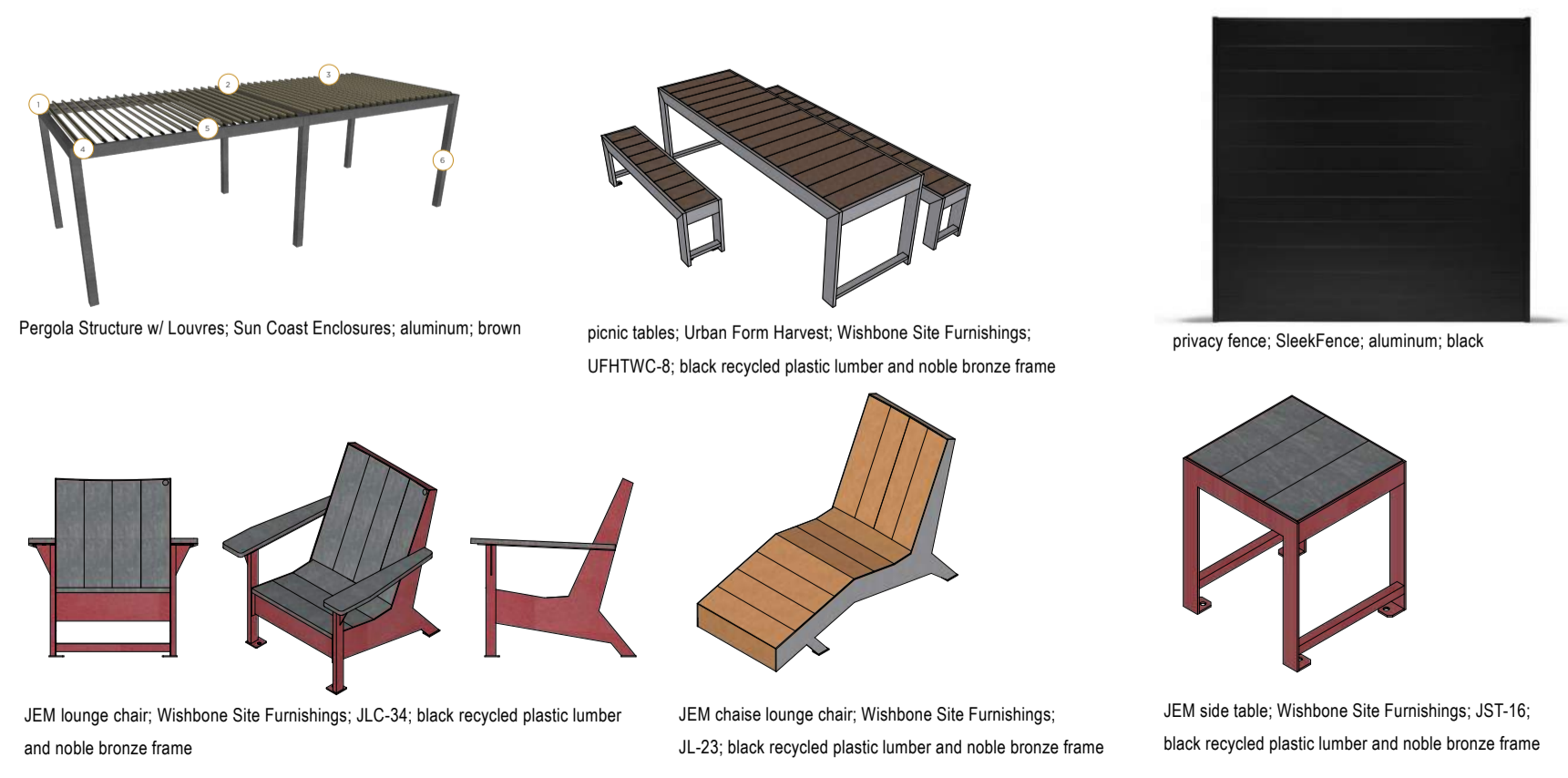
1 landscape plan  
1:200

trees	shrubs	perennials
<b>mountain pine</b> <i>Pinus uncinata</i> Qty: 3 3m height balled and burlapped	<b>alpine currant</b> <i>Ribes alpinum</i> Qty: 18 #5 container 600mm height + spread	<b>little bunny dwarf fountain grass</b> <i>Pennisetum alopecuroides</i> Qty: 49 #2 container 600 mm min height + spread
<b>purple spire columnar crabapple</b> <i>Malus 'Jefspire'</i> Qty: 3 50mm caliper balled and burlapped	<b>andorra juniper</b> <i>Juniperus horizontalis 'Plumosa Compacta'</i> Qty: 10 #5 container 600 mm min height + spread	<b>prairie sky switch grass</b> <i>Panicum virgatum 'Prairie'</i> Qty: 77 #5 container 600 mm min height + spread
	<b>cherry bomb barberry</b> <i>Berberis thunbergii 'Monbomb'</i> Qty: 4 #5 container 600mm min height + spread	
	<b>buckbrush coralberry</b> <i>Symphoricarpos occidentalis</i> Qty: 21 #5 container 600 mm min height + spread	
	<b>little rebel dogwood</b> <i>Cornus alba 'Jefreb'</i> Qty: 5 #5 container 600 mm min height + spread	
	<b>nannyberry</b> <i>Viburnum lentago</i> Qty: 4 #5 container 600mm min height + spread	
	<b>nest spruce</b> <i>Picea abies 'Nidiformis'</i> Qty: 5 #5 container 600 mm min height + spread	

hardscape	softscape
<b>Concrete Unit Pavers</b> <b>Standard Broom Finish Concrete Paving</b> <b>Dark grey Stained Broom Finish Concrete</b> <b>Rock Mulch</b>	<b>Mulched Planting Bed</b> <b>Seeded Clover</b>

site furnishings
<b>1.8m privacy fence</b> <b>chaise lounge</b> <b>lounge chair</b> <b>side table</b> <b>class 2 bike rack</b> <b>lounged pergola</b>

site furniture



**design intent**  
Gardens in the boulevards create a more visually engaging and sustainable streetscape. These low-maintenance plantings add texture, color, and year-round interest while discouraging informal storage thus enhancing the pedestrian experience.

A pergola was added to the rear patio for shade, comfort, and spatial definition. It serves as a focal point that encourages social interaction and anchors seating areas. A distinctive paving pattern further defines the space, adds visual interest, and improves wayfinding.

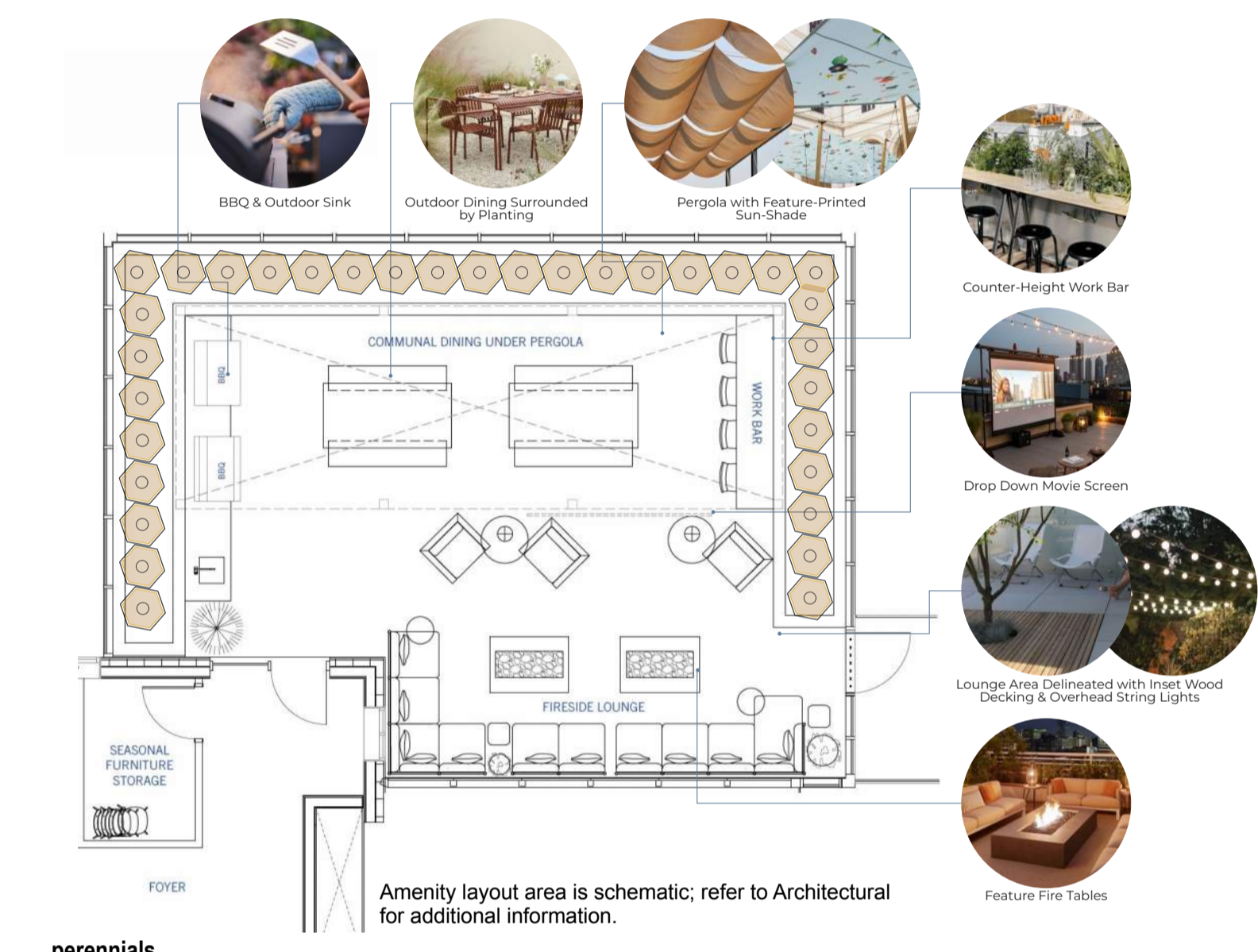
Safety and accessibility were prioritized throughout the design. Tactile paving with detectable warning surfaces supports navigation for people with visual challenges, while decorative screening elements protect against grade changes and clearly separates public and private areas without blocking views.

Plant selections were chosen for ecological value and seasonal appeal. Grasses add movement and winter interest, while trees provide shade, cooling, and help define the streetscape.

Street trees and bike racks were installed in line with municipal guidelines. Following CPTED principles, tree limbs are pruned to maintain clear sightlines and enhance safety. Bike racks, placed along wide sidewalks and boulevards, support active transportation and contribute to a clean, cohesive urban environment.

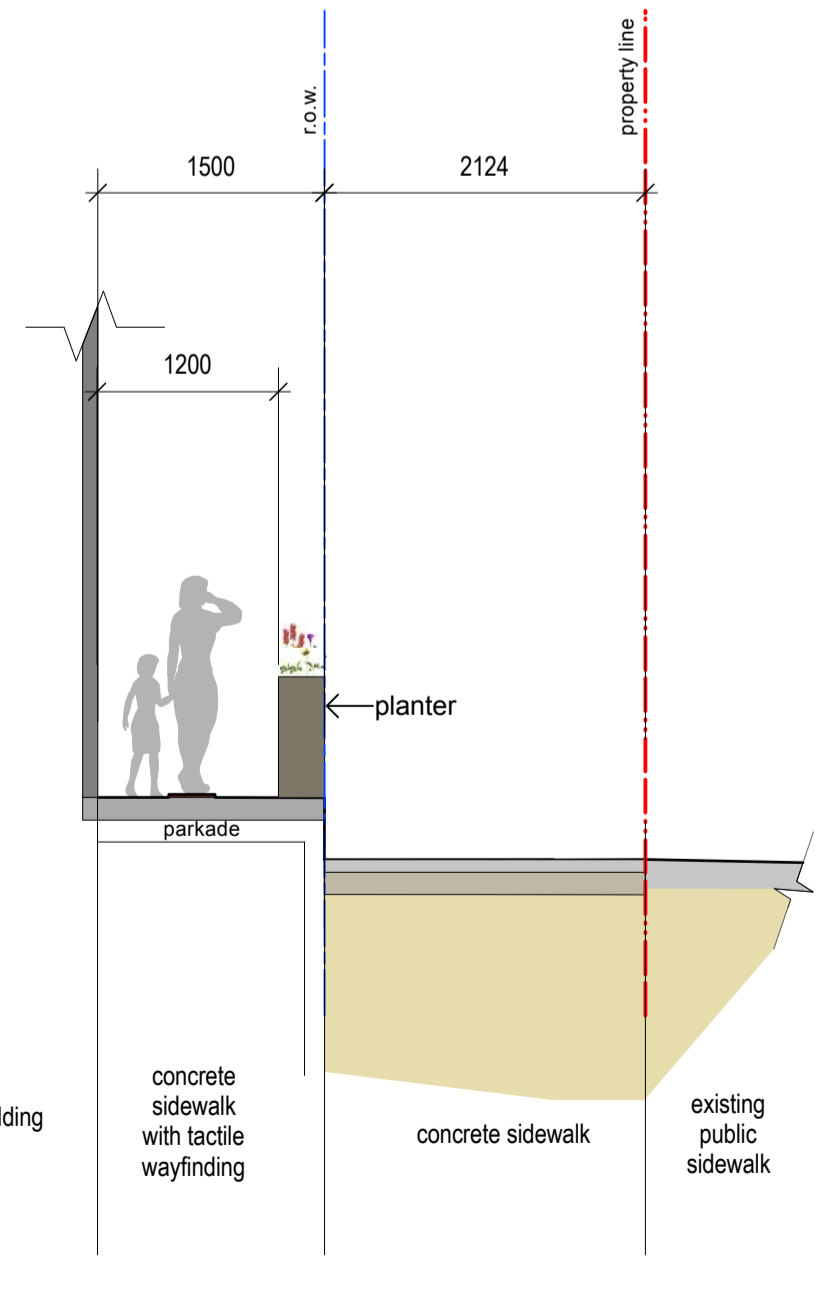
land use bylaw landscape requirements

City Of Calgary Zoning	CC-X	required	provided
landscape area			
<b>total parcel area</b>		<b>2,900.00 m<sup>2</sup></b>	
landscape area required for CC-X zoning (30% of parcel area)		880.00 m <sup>2</sup>	980.46 m <sup>2</sup>
landscape provided - ground level:			980.46 m <sup>2</sup>
landscape provided - rooftop amenity:			89.75 m <sup>2</sup>
landscape provided - at grade			91 %
<b>total landscape area provided</b>			<b>1070.21 m<sup>2</sup></b>
total landscape area provided (percentage of site area):			37 %
total number of trees (ground level and first floor terrace only)		required	provided
number of existing trees on site:			
number of new trees required:		11	6
deciduous trees (ground level and first floor terrace only)		required	provided
large trees as per item 1104 (50% min 75mm cal)			3
medium trees as per item 1104 (50% min 50mm cal)			3
total deciduous trees			3
coniferous trees (ground level and first floor terrace only)		required	provided
large trees as per item 1104 (50% 3.0m ht min)			3
total coniferous trees			3

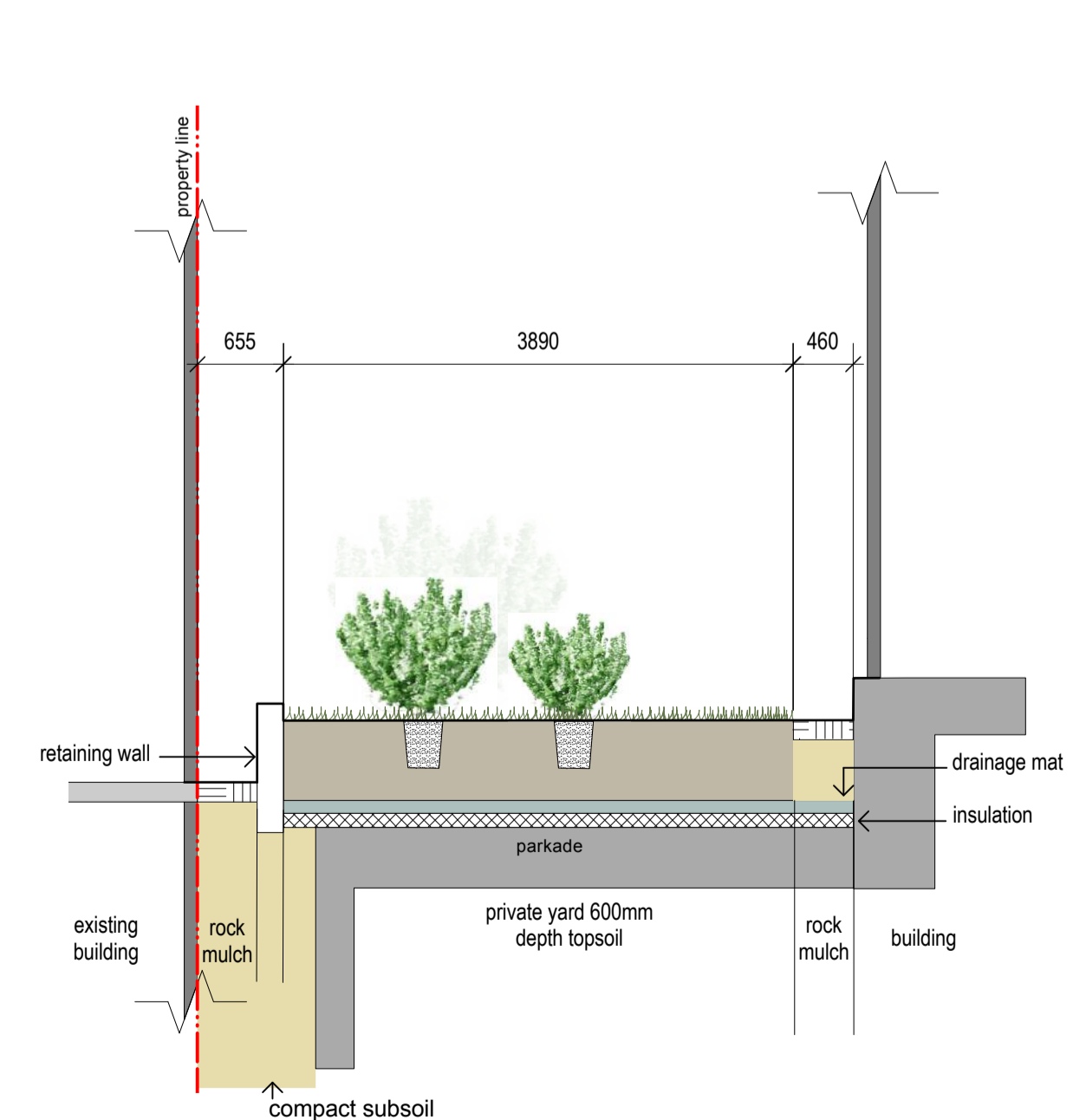


perennials  
prairie sky switch grass  
*Panicum virgatum 'Prairie'*  
Qty: 33  
#2 container

4 rooftop amenity  
Scale: 1:100



2 north pedestrian zone schematic section  
Scale: 1:50



3 private side yard schematic section  
Scale: 1:50

**NOT FOR CONSTRUCTION**  
for review and coordination only

notes

- This drawing is copyright © 818 studio ltd., and shall not be reproduced, revised, transmitted and / or utilized by any third party outside of the Owner without written permission from 818 studio ltd.
- Do not scale drawings.
- Refer to Civil drawings for all grading information.
- All walkways are plain concrete unless noted otherwise.
- All landscape areas to be watered with an automatic underground irrigation system. Contractor to ensure irrigation meter is installed and properly operating prior to charging and running the irrigation system.
- All planting beds and tree wells to be mulched with bark chip mulch, to 100 mm depth. Contractor to ensure planting beds extend to drip line of outermost plant materials in planting bed.

**EIGHT ONE EIGHT STUDIO**  
PLANNING + DESIGN COLLABORATIVE  
1812 140 STREET SW CALGARY, AB T2T3W6

number	revision	date	by	approved
7	arch base update	2026-03-10	clw	
6	dtr2 updates	2025-10-09	clw	
5	dtr2 updates	2025-09-18	clw	
4	dtr2 updates	2025-09-05	clw	
3	dtr1 updates	2025-06-18	clw	
2	base update	2025-02-18	zcc	
1	base update	2025-02-12	zcc	

4	development permit resubmission	2026-03-13		
3	DR comments	2025-06-18		
2	development permit resubmission	2025-06-26		
1	development permit resubmission	2025-03-04		

project  
**2124 Copenhagen**  
727 11TH AVE SW, CALGARY, AB  
LOTS 3-11 & WESTERLY 14.85 FEET OF LOT  
12, BLOCK 72, PLAN SA1

drawing	landscape plan
drawn	clw
checked	rbg
date	2025-02-01
scale	as noted
approved	rbg
project number	04128.1
sheet	DPL1