

This drawing, as an instrument of service, is provided by and is the property of Turner Fleischer Architects Inc. The contractor must verify and accept responsibility for all dimensions and conditions on site and must notify Turner Fleischer Architects Inc. of any variations from the supplied information. This drawing is not to be scaled. The architect is not responsible for the accuracy of survey, structural, mechanical, electrical, etc. information shown on this drawing, held as the appropriate consultant's drawings before proceeding with the work. Construction must conform to all applicable code requirements of authorities having jurisdiction. The contractor working from drawings not specifically marked "For Construction" must assume full responsibility and bear costs for any corrections or damages resulting from his work.

### STATISTICS

STATISTICS	REQUIRED	PROVIDED
<b>SITE AREA (A+B+C)</b>	± 15.81 AC	± 6.40 HA
<b>SITE A1</b>	± 1.54 AC	± 0.62 HA
<b>SITE A2</b>	± 1.39 AC	± 0.56 HA
<b>SITE B</b>	± 3.28 AC	± 1.33 HA
<b>SITE C</b>	± 9.60 AC	± 3.88 HA
<b>SITE A1</b>		
RESIDENTIAL BUILDING A1 (6 STOREYS)	± 134,490 S.F.	± 12,655 S.M.
		179 UNITS
<b>SETBACKS</b>	REQUIRED	PROPOSED
FRONT	6M	7.3M
REAR	6M	6.0M
NORTH SIDE	6M	9.3M
SOUTH SIDE	6M	13.4M
<b>PARKING REQUIRED</b>		112 CARS
<b>PARKING PROVIDED</b>		120 CARS
<b>COVERAGE</b>		33.41%
<b>SITE A2</b>		
RESIDENTIAL BUILDING A2 (6 STOREYS)	± 110,040 S.F.	± 10,223 S.M.
		147 UNITS
<b>SETBACKS</b>	REQUIRED	PROPOSED
FRONT	6M	10.4M
REAR	6M	20.2M
NORTH SIDE	6M	7.3M
SOUTH SIDE	6M	8.1M
<b>PARKING REQUIRED</b>		92 CARS
<b>PARKING PROVIDED</b>		120 CARS
<b>COVERAGE</b>		39.29%
<b>SITE B</b>		
BUILDING B1	± 17,260 S.F.	± 1,603 S.M.
BUILDING B2	± 8,400 S.F.	± 780 S.M.
BUILDING B3	± 5,400 S.F.	± 502 S.M.
BUILDING B4	± 2,200 S.F.	± 204 S.M.
<b>TOTAL BUILDING AREA</b>	± 33,260 S.F.	± 3,089 S.M.
<b>SETBACKS</b>	REQUIRED	PROPOSED
FRONT	6M	3.0M
REAR	6M	8.8M
EAST SIDE	6M	6.0M
WEST SIDE	6M	7.8M
<b>PARKING REQUIRED (SITE B)</b>		124 CARS
RETAIL 4100 S.M.		136 CARS
<b>PARKING PROVIDED</b>		136 CARS
<b>COVERAGE</b>	4.66/1000 S.F.	4.37/100 S.M.
		23.27%
<b>SITE C</b>		
BUILDING C1	± 118,863 S.F.	± 11,130 S.M.
UNIT C1.1	± 98,268 S.F.	± 9,224 S.M.
UNIT C1.2	± 10,494 S.F.	± 975 S.M.
UNIT C1.3	± 7,603 S.F.	± 652 S.M.
UNIT C1.4	± 1,500 S.F.	± 139 S.M.
UNIT C1.5	± 1,581 S.F.	± 149 S.M.
BUILDING C2	± 6,000 S.F.	± 557 S.M.
BUILDING C3	± 10,800 S.F.	± 985 S.M.
<b>TOTAL BUILDING GFA (INC. MEZZ. ME ROOM)</b>	± 130,663 S.F.	± 12,138 S.M.
<b>TOTAL BUILDING GFA (INC. MEZZ. ME ROOM)</b>	± 136,463 S.F.	± 12,672 S.M.
<b>SETBACKS</b>	REQUIRED	PROPOSED
FRONT	3.0M	3.17M
REAR	3.0M	19.3M
EAST SIDE	5.8M	6.1M
WEST SIDE	3.0M	3.0M
<b>PARKING REQUIRED (SITE C)</b>		507 CARS
RETAIL 4100 S.M.		522 CARS
<b>PARKING PROVIDED (INC. MEZZ. ME ROOM)</b>	4.22/1000 S.F.	4.59/100 S.M.
<b>PARKING PROVIDED (INC. MEZZ. ME ROOM)</b>	4.65/1000 S.F.	522 CARS
<b>COVERAGE</b>	4.65/1000 S.F.	4.36/100 S.M.
		38.62%
<b>OVERALL SITE (B+C)</b>		
<b>TOTAL BUILDING AREA</b>	± 169,863 S.F.	± 15,761 S.M.
<b>TOTAL PARKING REQUIRED</b>		631 CARS
<b>TOTAL PARKING PROVIDED</b>	4.65/1000 S.F.	687 CARS
<b>COVERAGE</b>	4.65/1000 S.F.	4.36/100 S.M.
		38.24%

### SITE PLAN LEGEND

	PROPOSED CONCRETE SIDEWALK		PROPOSED ENTRANCE ARROW
	PROPOSED PAINTED LINES		PROPOSED EXIT ARROW
	PROPOSED LANDSCAPING		PROPOSED SIGNAGE

1	2025-12-19	ISSUED FOR DP SUBMISSION 1	AMC
#	DATE	DESCRIPTION	BY



### PROJECT

**BELVEDERE SITE C**

1825 92 ST SE AND GARDEN HEIGHTS  
PLAN 1858AD, BLOCK 5  
CALGARY, AB

### DRAWING

### OVERALL SITE PHASING PLAN, STATISTICS, & ZONING

PROJECT NO.

24.057P01

PROJECT DATE

2025-12-19

DRAWN BY

AMC

CHECKED BY

DEM

SCALE

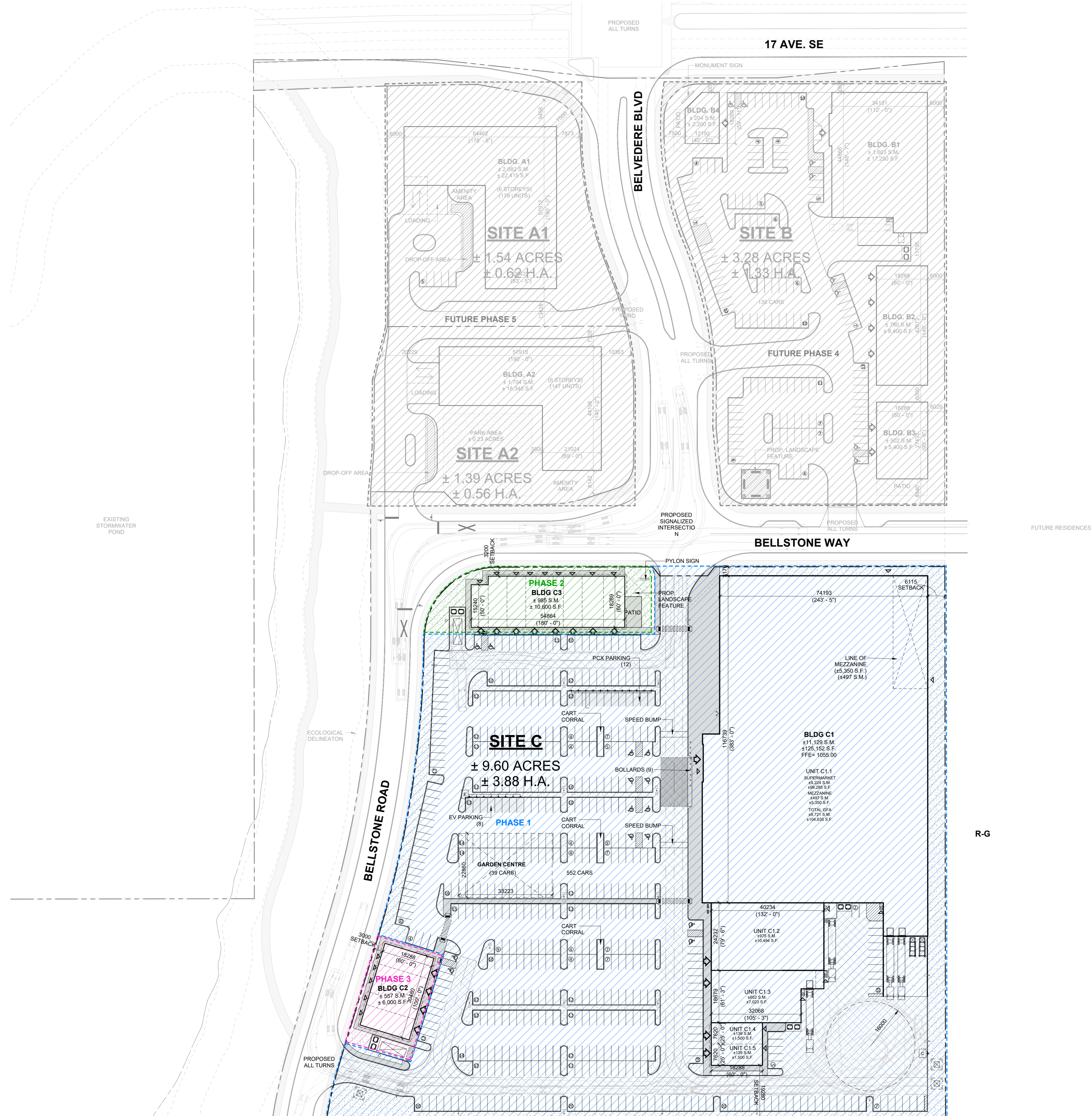
As indicated

DRAWING NO.

A001

REV.

1



1 OVERALL SITE PLAN  
A001 1:700

S-FUD

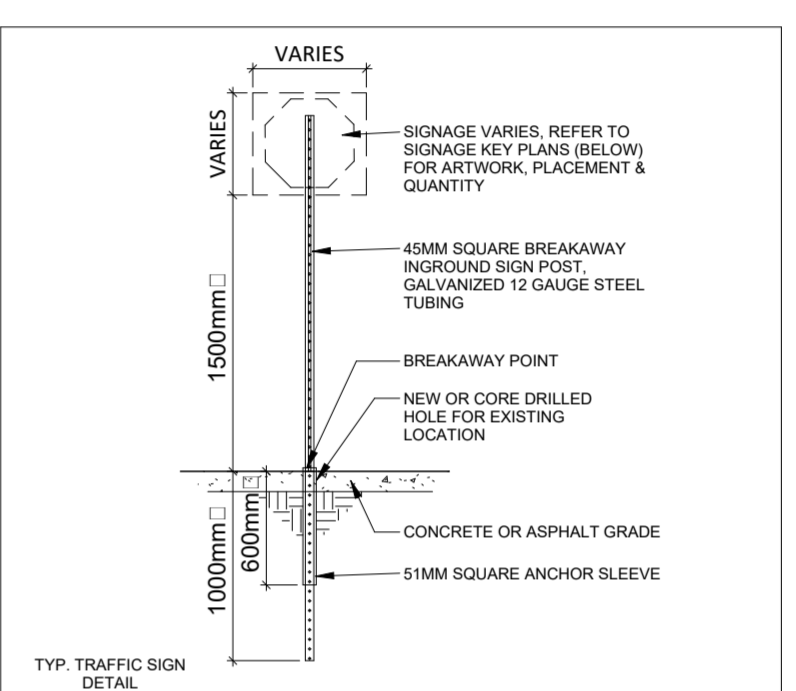
R-G

This drawing, as an instrument of service, is provided by and is the property of Turner Fleischer Architects Inc. The contractor must verify and accept responsibility for all dimensions and conditions on site and must notify Turner Fleischer Architects Inc. of any variations from the approved information. This drawing is to be used for the project. The architect is not responsible for the accuracy of any survey, structural, electrical, etc. information shown on this drawing. Construction must conform to all applicable regulatory requirements of all authorities having jurisdiction. The contractor must assume full responsibility and bear costs for any corrections or changes resulting from the work.

## STATISTICS

PROPOSED ZONING AND REGULATIONS	C-R31(8)11	REQUIRED	PROVIDED SITE C
MAX. PARCEL AREA	3.2 HA	± 3.88 HA	
<b>BUILDING SETBACK</b>			
MIN. FRONT YARD - NORTH	3.0M	3.17M	
MIN. SIDE YARD - EAST	5.0M	6.1M	
MIN. SIDE YARD - WEST	3.0M	3.0M	
MIN. REAR YARD - SOUTH	3.0M	19.3M	
<b>PARKING SPACE</b>			
REGULAR	2.6M X 5.4M	2.6M X 5.4M	
MIN. BARRIER-FREE	2.4M X 5.4M	2.4M X 5.4M	
MIN. PARKING SITE C	507 SPACES	552 SPACES	
MIN. ACCESSIBLE PARKING SITE C	8 SPACES	14 SPACES	
MIN. DRIVE AISLE	7.2M	7.2M	
<b>LOADING SPACE DIMENSIONS</b>			
MIN. LOADING SPACES SITE C	3.1M X 9.2M X 4.3M	3.1M X 9.2M X 4.3M	
MIN. BICYCLE PARKING	N/A	12 SPACES	
MIN. LANDSCAPED BUFFER	N/A	3M	

STATISTICS	REQUIRED	PROVIDED
<b>SITE AREA (A+B+C)</b>	± 15.81 AC	± 6.40 HA
<b>SITE A 1</b>	± 1.54 AC	± 6.02 HA
<b>SITE A 2</b>	± 1.39 AC	± 5.56 HA
<b>SITE B</b>	± 3.28 AC	± 1.33 HA
<b>SITE C</b>	± 9.60 AC	± 3.88 HA
<b>SITE A 1 RESIDENTIAL BUILDING A1 (8 STOREYS)</b>	± 124,490 S.F.	± 12,485 S.M.
		179 UNITS
<b>SETBACKS</b>	REQUIRED	PROPOSED
FRONT	6M	7.8M
REAR	6M	6.8M
NORTH SIDE	6M	9.5M
SOUTH SIDE	6M	13.4M
<b>PARKING REQUIRED</b>	112 CARS	120 CARS
<b>PARKING PROVIDED</b>	120 CARS	33.41%
<b>SITE A 2 RESIDENTIAL BUILDING A2 (6 STOREYS)</b>	± 110,040 S.F.	± 10,223 S.M.
		147 UNITS
<b>SETBACKS</b>	REQUIRED	PROPOSED
FRONT	6M	10.4M
REAR	6M	20.2M
NORTH SIDE	6M	7.3M
SOUTH SIDE	6M	8.1M
<b>PARKING REQUIRED</b>	90 CARS	120 CARS
<b>PARKING PROVIDED</b>	120 CARS	33.29%
<b>SITE B</b>		
BUILDING B1	± 17,250 S.F.	± 1,603 S.M.
BUILDING B2	± 8,048 S.F.	± 751 S.M.
BUILDING B3	± 5,400 S.F.	± 502 S.M.
BUILDING B4	± 2,200 S.F.	± 204 S.M.
TOTAL BUILDING AREA	± 33,298 S.F.	± 3,069 S.M.
<b>SETBACKS</b>	REQUIRED	PROPOSED
FRONT	6M	3.8M
REAR	6M	8.9M
EAST SIDE	6M	6.9M
WEST SIDE	6M	7.5M
<b>PARKING REQUIRED (SITE B)</b>	124 CARS	
RETAIL 4100 S.M.	135 CARS	
<b>PARKING PROVIDED</b>	4,061,000 S.F.	4,370,000 S.M.
<b>COVERAGE</b>		23.27%
<b>SITE C</b>		
BUILDING C1	± 119,803 S.F.	± 11,130 S.M.
UNIT C1.1	± 99,285 S.F.	± 9,224 S.M.
UNIT C1.2	± 6,048 S.F.	± 575 S.M.
UNIT C1.3	± 7,023 S.F.	± 652 S.M.
UNIT C1.4	± 1,500 S.F.	± 139 S.M.
UNIT C1.5	± 1,501 S.F.	± 139 S.M.
BUILDING C2	± 6,000 S.F.	± 557 S.M.
BUILDING C3	± 10,800 S.F.	± 985 S.M.
TOTAL BUILDING GFA (N.C. MEZZ. ME ROOM)	± 136,653 S.F.	± 12,738 S.M.
TOTAL BUILDING GFA (INC. MEZZ. ME ROOM)	± 136,403 S.F.	± 12,672 S.M.
<b>SETBACKS</b>	REQUIRED	PROPOSED
FRONT	3.0M	3.17M
REAR	3.0M	19.3M
EAST SIDE	3.0M	6.1M
WEST SIDE	3.0M	3.0M
<b>PARKING REQUIRED (SITE C)</b>	507 CARS	
RETAIL 4100 S.M.	552 CARS	
<b>PARKING PROVIDED (N.C. MEZZ. ME ROOM)</b>	4,221,000 S.F.	4,591,000 S.M.
<b>PARKING PROVIDED (INC. MEZZ. ME ROOM)</b>	4,051,000 S.F.	4,361,000 S.M.
<b>COVERAGE</b>		32.62%
<b>OVERALL SITE (B+C)</b>		
TOTAL BUILDING AREA	± 169,653 S.F.	± 15,761 S.M.
TOTAL PARKING REQUIRED	631 CARS	
TOTAL PARKING PROVIDED	687 CARS	
<b>COVERAGE</b>	4,051,000 S.F.	4,361,000 S.M.
		32.34%



SYMBOL	SIGN	DESCRIPTION
A	STOP	"STOP" SIGN R4-1 (900x600)mm WHITE REFL. LEGEND & BORDER. RED REFL. BACKGROUND
B	ACCESSIBLE PARKING PERMIT	"ACCESSIBLE PARKING PERMIT" SIGN R4-63 (900x450)mm RED REFL. INTERDICTIONARY SYMBOL. BLUE REFL. SYMBOL OF ACCESS & SYMBOL BORDER. BLACK SYMBOL, LEGEND & BORDER. WHITE REFL. BACKGROUND
C	FIRE ROUTE	"FIRE ROUTE" SIGN (300x450)mm RED REFL. INTERDICTIONARY SYMBOL. BLACK SYMBOL, WHITE REFL. "FIRE ROUTE" ON BLACK BACKGROUND, BLACK LEGEND & BORDER. WHITE REFL. BACKGROUND
D	LOADING ZONE	"LOADING ZONE" SIGN (300x450)mm RED REFL. INTERDICTIONARY SYMBOL. BLACK SYMBOL, LEGEND & BORDER. WHITE REFL. BACKGROUND
E	CHARGING STATION	"CHARGING STATION" SIGN ELECTRIC CAR CHARGING ZONE 300x450 mm WHITE REFL. BACKGROUND
F	PEDESTRIAN CROSSING	"PEDESTRIAN CROSSING" SIGN (600x750)mm WHITE RETROREFL. BG, BLACK BORDER. LEGEND & SYMBOL

SYMBOL	DESCRIPTION
1	PROPOSED CONCRETE SIDEWALK
2	PROPOSED PAINTED LINES
3	PROPOSED LANDSCAPING
4	PROPOSED HEAVY DUTY ASPHALT
5	PROPOSED CONCRETE PAD

SYMBOL	DESCRIPTION
1	PROPOSED ENTRANCE
2	PROPOSED EXIT
3	PROPOSED SIGNAGE

SYMBOL	DESCRIPTION
1	EXTENT OF PHASE 1
2	EXTENT OF PHASE 2
3	EXTENT OF PHASE 3
4	EXTENT OF FUTURE PHASE 4 & 5

DATE	ISSUED FOR	DESCRIPTION	AMC	BY
2025-12-19	ISSUED FOR DP SUBMISSION 1		AMC	

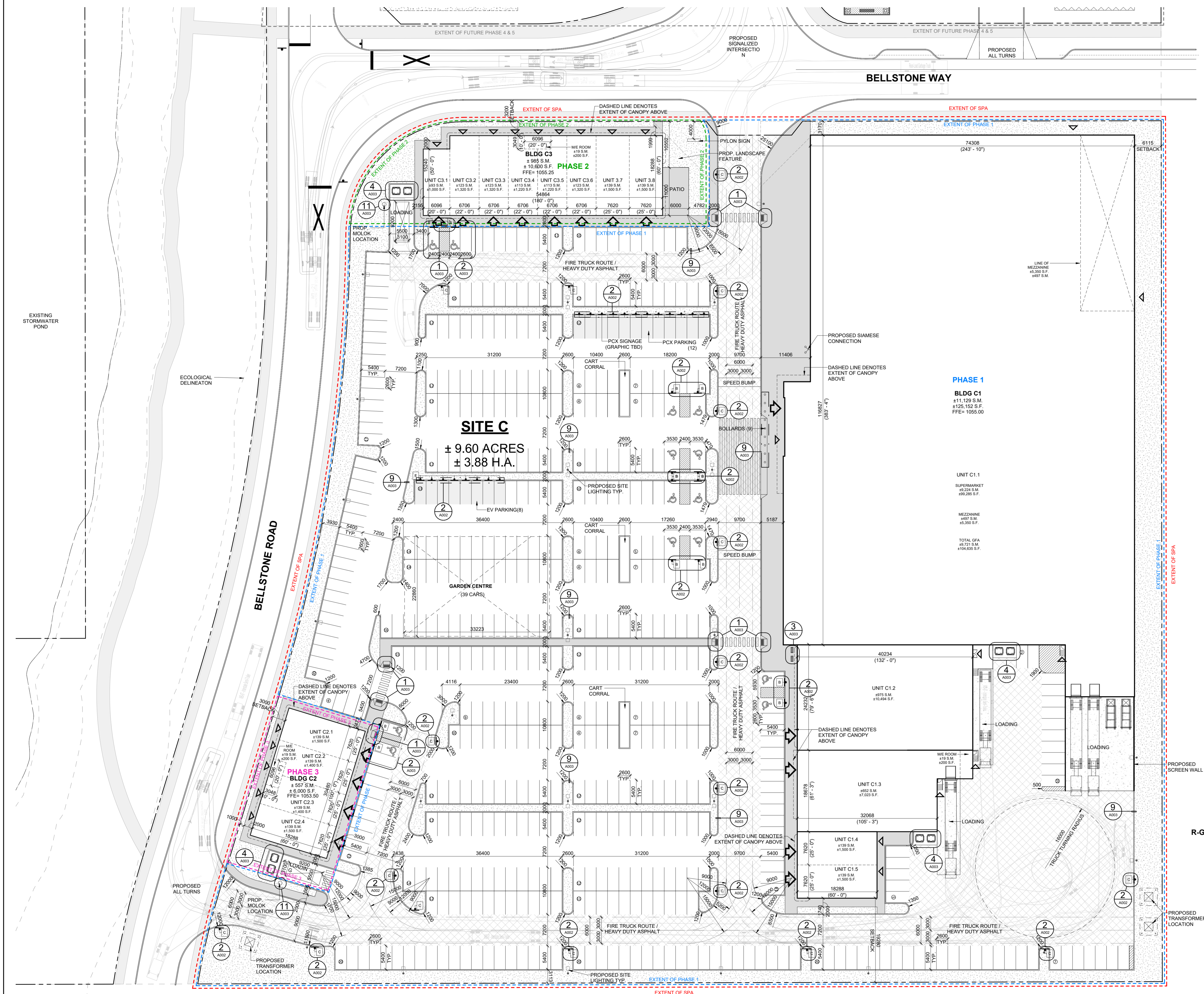


**BELVEDERE SITE C**  
1825 92 ST SE AND GARDEN HEIGHTS  
PLAN 1858AD, BLOCK 5  
CALGARY, AB

## ENLARGED SITE PLAN

PROJECT NO	24 057P01
PROJECT DATE	2025-12-19
DRAWN BY	AMC
CHECKED BY	DEM
SCALE	As indicated

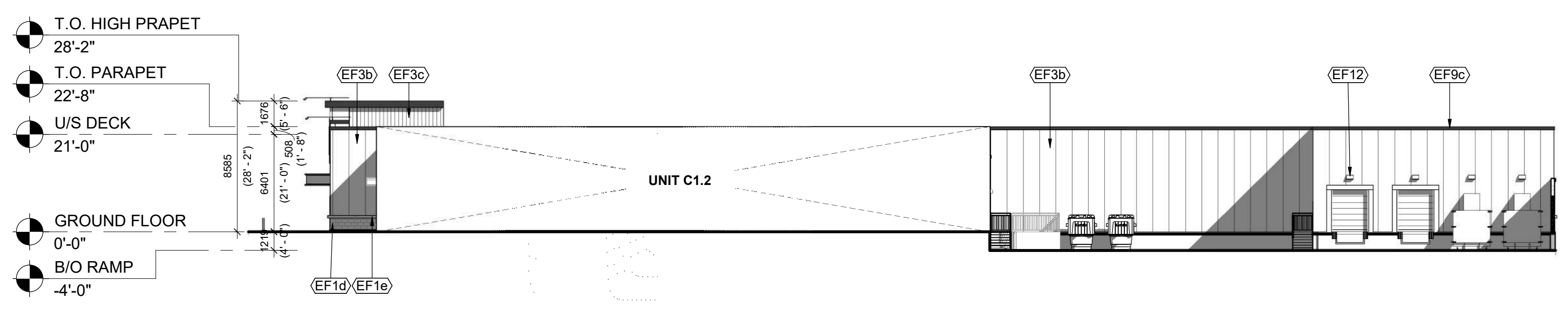
DRAWING NO	A002	REV.	1
------------	------	------	---



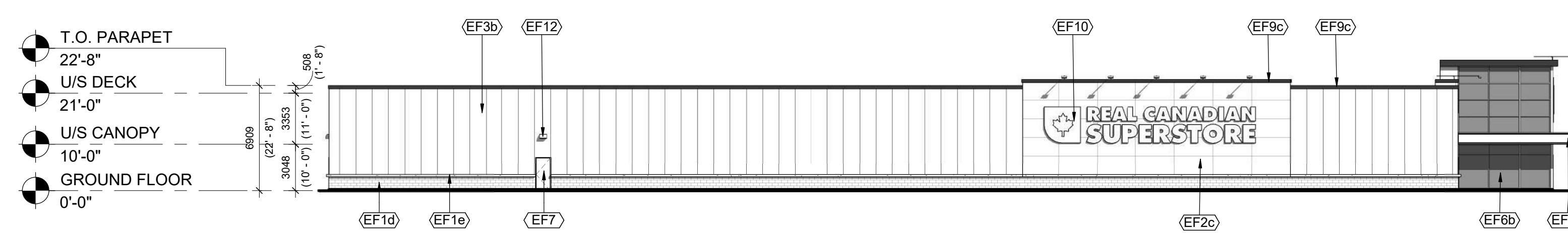
1 ENLARGED SITE PLAN  
A002 1:400

S-FUD

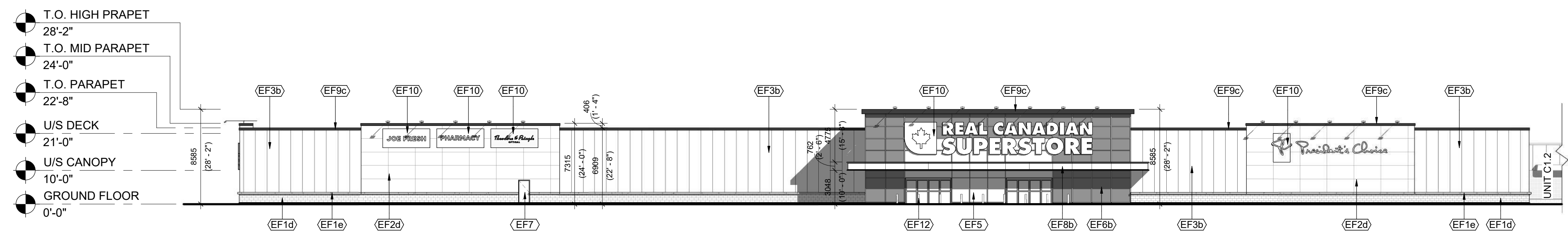
The issuance of this record drawing is a representation by Turner Fleischer that the construction, arrangement or alteration of the building is in general, as opposed to precise, conformity with the design prepared and provided by Turner Fleischer, but is not a representation that the construction, arrangement or alteration of the building is in complete conformity with the design as presented or provided by others. The drawings on these technical documents, reflecting the significant changes in the work made during construction, are based on data furnished by the contractor to Turner Fleischer. Turner Fleischer shall not be held responsible for the accuracy or completeness of the information provided by the contractor.



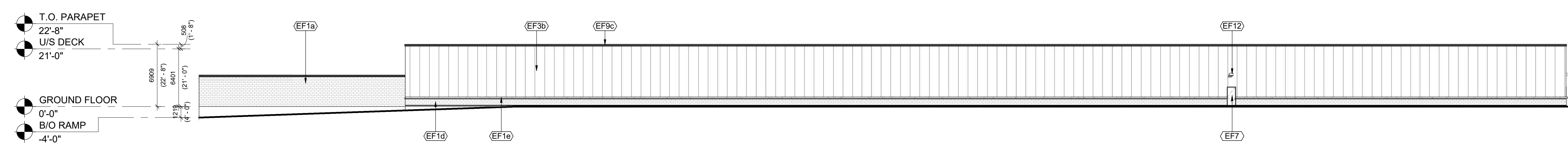
**4 UNIT C1.1 WEST ELEVATION**  
A201-C1.1 1: 250



**3 UNIT C1.1 EAST ELEVATION**  
A201-C1.1 1: 250



**2 UNIT C1.1 NORTH ELEVATION**  
A201-C1.1 1: 250



**1 UNIT C1.1 SOUTH ELEVATION**  
A201-C1.1 1: 250

EXTERIOR FINISH SCHEDULE	
MARK	DESCRIPTION
EF1d	ARCHITECTURAL BLOCK: PRODUCT: SHOULDICE - ARCHITECTURAL CONCRETE BLOCK SIZE: 100MM FULL SPLIT FACE COLOUR: #305 CHARCOAL
EF1e	CONCRETE PRECAST SILLS: PRODUCT: EXPOCRETE 100MM SILL BLOCK COLOUR: #305 CHARCOAL
EF2c	ALUMINUM COMPOSITE PANELS: PRODUCT: TBD COLOUR: QC#18317 'WHITE-WHITE' FINISH: TO MATCH BAYCOAT PERSPECTRA SERIES
EF2d	ALUMINUM COMPOSITE PANELS: PRODUCT: TBD
EF3b	INSULATED METAL PANELS: PRODUCT: KINGSPAN INSULATED METAL PANEL SYSTEM COLOUR: PREFINISHED, KINGSPAN COLOUR DOVE GREY
EF3c	VERTICAL CORRUGATED METAL CLADDING: PRODUCT: TBD PROVIDE VENTS AT BACKSIDE OF HIGH PARAPET COLOUR: PERSPECTRA SERIES QC #18317 'WHITE-WHITE', 24 Ga
EF3d	HORIZONTAL CORRUGATED METAL SIDING: PRODUCT: VICWEST PROFILE: 7/8" CORRUGATED COLOUR: Z275 GALVANIZED
EF5	GLAZED DOORS AND WINDOWS: BLACK ANODIZED ALUMINUM FRAMES, TEMPERED CLEAR GLASS INSULATED VISION GLASS / LOW-E GLAZING, LOW IRON GLAZING
EF6b	SPANDREL GLAZED DOORS & WINDOWS: BLACK ANODIZED ALUMINUM FRAMES, TEMPERED CLEAR GLASS UNITS WITH COATING ON 3RD SURFACE C/W INSULATED BACKPAN COLOUR: GREY
EF7	H.M. DOORS AND FRAMES: PRODUCT: TBD PREFINISHED HOLLOW METAL DOORS AND FRAMES PAINTED TO MATCH ADJACENT FINISH
EF8b	FASCIA AND SOFFIT - PRE-FINISHED COMPOSITE METAL CANOPY: PRODUCT: TBD COLOUR: PPG-DURANAR BLUE-UC122217 C/W 5/8" DRY JOINT SYSTEM
EF9c	PREFINISHED METAL CAP FLASHING: TO MATCH HO PAINTS - OBSIDIAN GLASS, 24GA, GALVANIZED STEEL SHEET, PROFILE TYPE A
EF10	EXTERIOR SIGNAGE: SIGNAGE TO BE PROVIDED BY AND INSTALLED BY TENANT. GC TO INSTALL 5/8" PLYWOOD BACKING FOR FUTURE MOUNTING OF SIGNAGE. SIGNAGE CONDUIT ROUGH OUTS TO BE COORDINATED WITH TENANT.
EF12	BOLLARDS: PRODUCT: SUREGUARD POLYURETHANE 8" BOLLARDS @ 5'-0" A.F.F. COLOUR: TBD

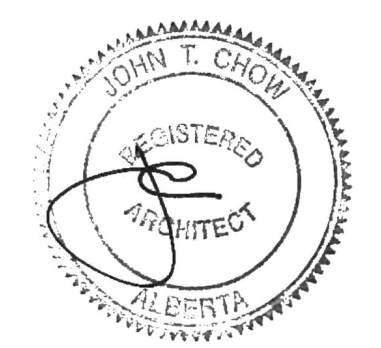
1	2025-12-19	ISSUED FOR DP SUBMISSION 1	EMZ
#	DATE	DESCRIPTION	BY



PROJECT  
**BELVEDERE SITE C**  
1825 92 St SE AND GARDEN HEIGHTS  
PLAN 1858AD, BLOCK 5  
CALGARY, AB

DRAWING  
**UNIT C1.1 ELEVATIONS**

PROJECT NO.  
24.057P01  
PROJECT DATE  
2025-12-19  
DRAWN BY  
EMZ  
CHECKED BY  
DEM  
SCALE  
1:250

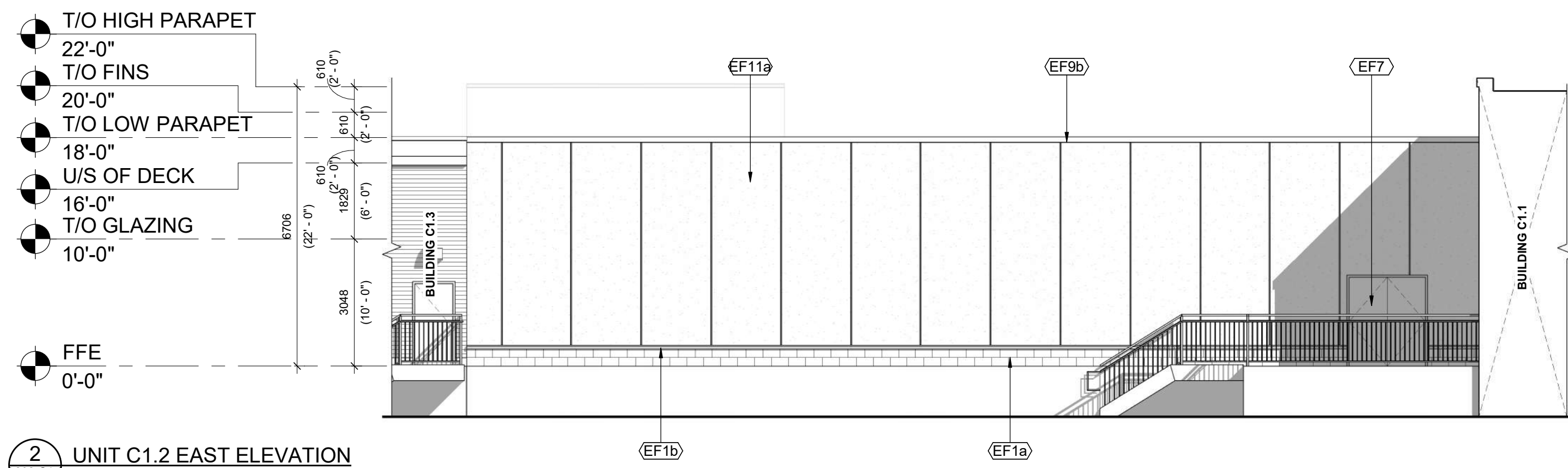


DRAWING NO. **A201-C1.1** REV. **1**

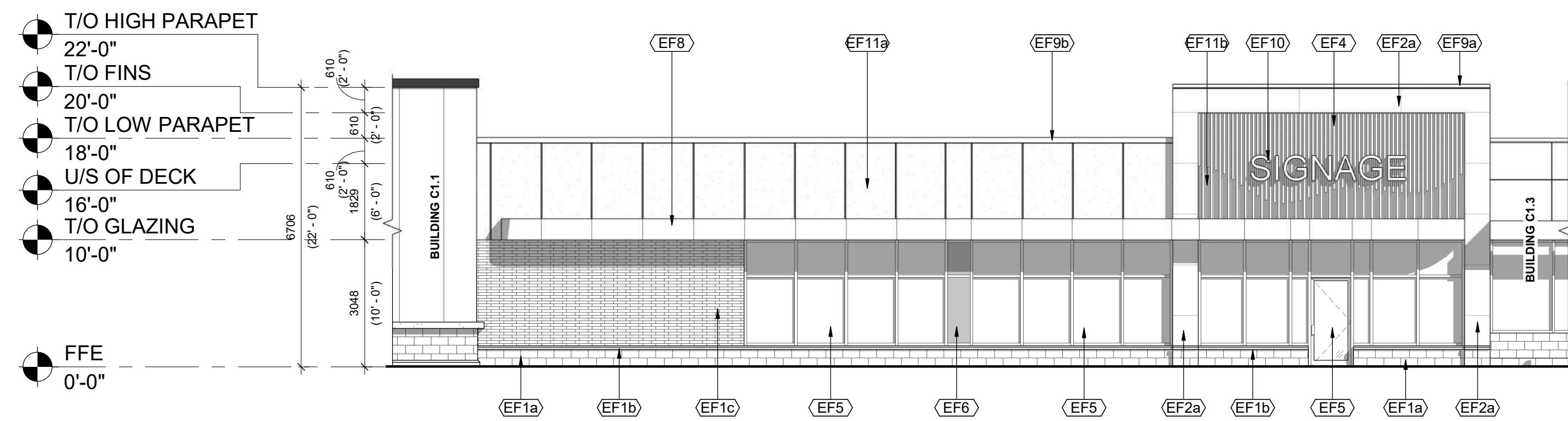
This drawing, as an instrument of service, is provided by and is the property of Turner Fleischer. The contractor must verify and accept responsibility for all dimensions and conditions on site and must notify Turner Fleischer of any variations from the supplied information. This drawing is not to be used for any other project without the written consent of Turner Fleischer. Mechanical, electrical, plumbing, and other trades shall be coordinated with the appropriate consultant's drawings before proceeding with the work. Construction must conform to all applicable codes and requirements of all applicable governing jurisdictions. The contractor working from drawings not specifically marked for construction must assume full responsibility and bear costs for any corrections or damage resulting from his work.



EXTERIOR FINISH SCHEDULE	
Material: Mark	DESCRIPTION
EF1a	ARCHITECTURAL BLOCK: PRODUCT: SHOULDRICE - ARCHITECTURAL CONCRETE BLOCKS W/ SILL PROFILE: DIMENSIONAL STONE 3 1/2"(W) x 7 1/2"(H) x 15 3/8"(L) (UNLESS NOTED OTHERWISE) COLOUR: COLBY FINISH: SMOOTH MORTAR: SOLOMON 97A SUPER BLACK CONTROL JOINT AND CAULKING COLOUR TO MATCH MASONRY UNIT COLOUR
EF1b	CONCRETE PRECAST SILLS: PRODUCT: SHOULDRICE CONCRETE SILL PROFILE: 604 SLOPED SILL WITH DRIP EDGE COLOUR: COLBY (COLOUR TO MATCH BLOCK BELOW) FINISH: SMOOTH MORTAR: SOLOMON 97A SUPER BLACK
EF1c	BRICK: PRODUCT: ENDICOTT - FACE BRICK PROFILE: NORMAN - 3 5/8"(W) x 2 1/4"(H) x 11 5/8"(L) (UNLESS NOTED OTHERWISE) COLOUR: MANGANESE IRONSPOT FINISH: SMOOTH MORTAR: SOLOMON COLOURS INC - 60A WHITE CAULKING COLOURS TO MATCH MASONRY UNIT COLOUR
EF2a	ALUMINUM COMPOSITE PANELS: PRODUCT: ALPOLIC MATTE PROFILE: 2 1/4" ACM SYSTEM W/ 1/2" DRY JOINTS BETWEEN PANELS C/W MATCHING TRIMS/FLASHING COLOUR: BSM SLATE BLACK
EF3	VERTICAL METAL SIDING: PRODUCT: VICWEST - BELLARA PLANK SERIES PROFILE: PLANK 90 - 0.59"(D) x 3.64"(H) x 12" (L) FINISH: EXPRESSENCE - ARCHITECTURAL PRINT SERIES COLOUR: RIVER ROCK GRAY 18-0254
EF4	ALUMINUM WALL FINIS: PRODUCT: MAXXIT - FORM EXTERIOR WALL FINIS PROFILE: 2" (W) x 6" (L) COLOUR: TEAK FINISH: STANDARD POWDER COATED PAINT FINISHES (EXTERIOR) FORMALDEHYDE-FREE NOTE: EIFS FINISH TO BE INSTALLED BEHIND ALUMINUM WALL FINIS
EF5	GLAZED DOORS & WINDOWS: BLACK ANODIZED ALUMINUM FRAMES; TEMPERED CLEAR INSULATED VISION GLASS / LOW-E GLAZING, LOW IRON GLAZING
EF6	SPANDREL GLAZED DOORS & WINDOWS: BLACK ANODIZED ALUMINUM FRAMES; TEMPERED CLEAR GLASS UNITS WITH COATING ON 3RD SURFACE C/W INSULATED BACKPAN. COLOUR: OPACI-COAT 1-1818 BLACK
EF7	H.M. DOORS & FRAMES: PRODUCT: PREFINISHED HOLLOW METAL DOORS AND FRAMES PAINTED TO MATCH ADJACENT FINISH
EF8	FASCIA AND SOFFIT - ALUMINUM COMPOSITE PANEL: PRODUCT: ALPOLIC MATTE COLOUR: BSM SLATE BLACK
EF9a	PREFINISHED METAL CAP FLASHING: PRE-FINISHED 18 GA. METAL FLASHING COLOUR: BLACK PROFILE TYPE A
EF9b	PREFINISHED METAL CAP FLASHING: PRE-FINISHED 18 GA. METAL FLASHING COLOUR: BLACK PROFILE TYPE B
EF10	EXTERIOR SIGNAGE: SIGNAGE TO BE PROVIDED BY AND INSTALLED BY TENANT. G.C. TO INSTALL 5/8" PLYWOOD BACKING FOR FUTURE MOUNTING OF SIGNAGE. SIGNAGE CONDUIT ROUGH-OUTS TO BE COORDINATED WITH TENANT.
EF11a	EIFS (EXTERIOR INSULATED FINISH SYSTEM): PRODUCT: EIFS ACRYLIC STUCCO DRYVIT COLOUR: 715 LICORICE FINISH: SANDPEBBLE DPR
EF11b	EIFS (EXTERIOR INSULATED FINISH SYSTEM): PRODUCT: EIFS ACRYLIC STUCCO DRYVIT COLOUR: MATCH TO BENJAMIN MOORE RAINFOREST FOLIAGE #2040-10 FINISH: SANDPEBBLE DPR NOTE: EIFS FINISH TO BE INSTALLED BEHIND ALUMINUM WALL FINIS



2 UNIT C1.2 EAST ELEVATION  
202-C1.2 1 : 100



1 UNIT C1.2 WEST ELEVATION  
202-C1.2 1 : 100

1	2025-12-19	ISSUED FOR DP SUBMISSION 1	AMC
#	DATE	DESCRIPTION	BY



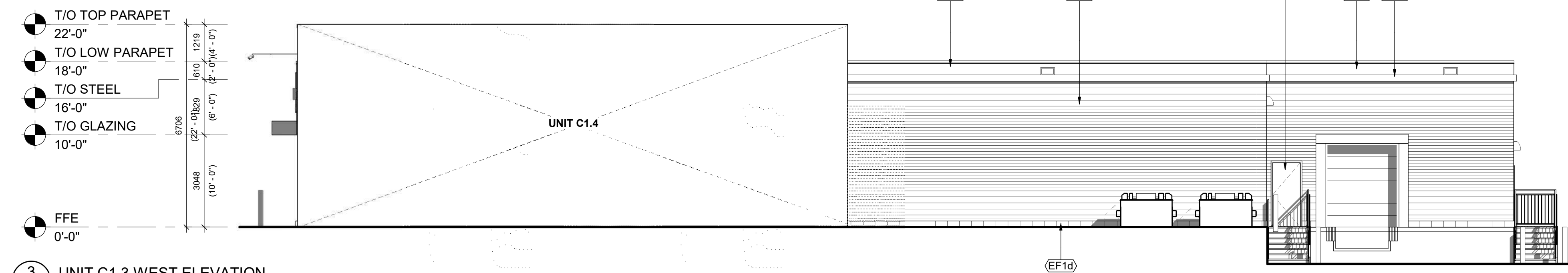
PROJECT  
**BELVEDERE SITE C**  
1825 92 ST SE AND GARDEN HEIGHTS  
PLAN 1858AD, BLOCK 5  
CALGARY, AB

DRAWING  
**UNIT C1.2 ELEVATIONS**

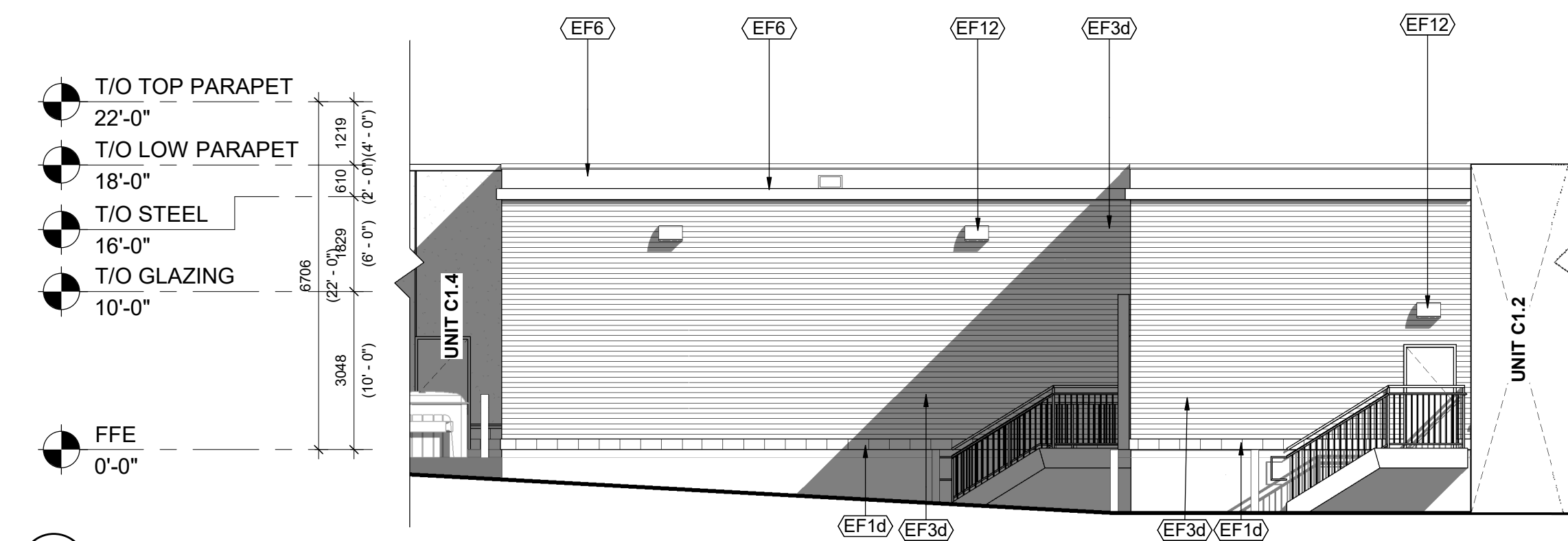
PROJECT NO. 24.057P01	
PROJECT DATE 2025-12-12	
DRAWN BY AMC	
CHECKED BY DEM	
SCALE 1:100	

DRAWING NO. **A202-C1.2** REV. **1**

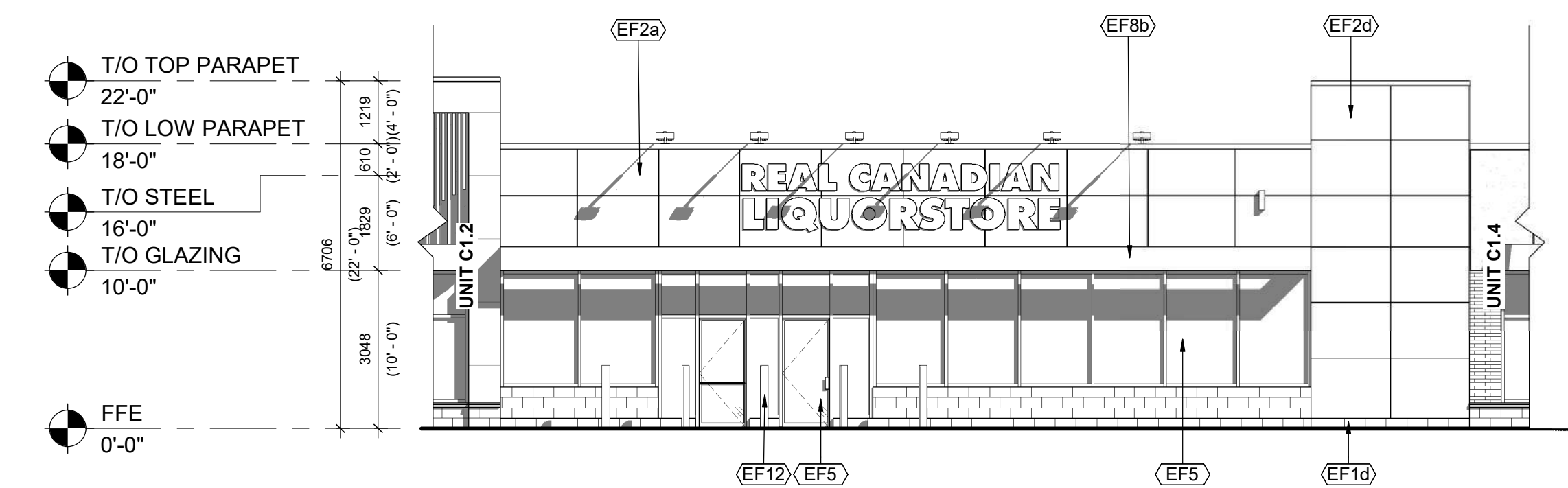
The issuance of this record drawing is a representation by Turner Fleischer that the construction, arrangement or alteration of the building is in general, as approved by permit, conforming with the design prepared and provided by Turner Fleischer, but is not a representation that the construction, arrangement or alteration of the building is in conformity with a design that has been prepared or provided by others. The contractor shall be responsible for the accuracy and completeness of the information provided by the contractor.



3 UNIT C1.3 WEST ELEVATION  
2023-C1.3 1:100



2 UNIT C1.3 SOUTH ELEVATION  
2023-C1.3 1:100



1 UNIT C1.3 NORTH ELEVATION  
2023-C1.3 1:100

## EXTERIOR FINISH SCHEDULE

MARK	DESCRIPTION
EF1d	ARCHITECTURAL BLOCK: PRODUCT: SHOULDICE - ARCHITECTURAL CONCRETE BLOCK SIZE: 100MM FULL SPLIT FACE COLOUR: #305 CHARCOAL
EF1e	CONCRETE PRECAST SILLS: PRODUCT: EXPOCRETE 100MM SILL BLOCK COLOUR: #305 CHARCOAL
EF2c	ALUMINUM COMPOSITE PANELS: PRODUCT: TBD COLOUR: QC#18317 'WHITE-WHITE' FINISH: TO MATCH BAYCOAT PERSPECTRA SERIES
EF2d	ALUMINUM COMPOSITE PANELS: PRODUCT: TBD
EF3b	INSULATED METAL PANELS: PRODUCT: KINGSPAN INSULATED METAL PANEL SYSTEM COLOUR: PREFINISHED, KINGSPAN COLOUR DOVE GREY
EF3c	VERTICAL CORRUGATED METAL CLADDING: PRODUCT: TBD PROVIDE VENTS AT BACKSIDE OF HIGH PARAPET COLOUR: PERSPECTRA SERIES QC #18317 'WHITE-WHITE', 24 Ga
EF3d	HORIZONTAL CORRUGATED METAL SIDING: PRODUCT: VICWEST PROFILE: 7/8" CORRUGATED COLOUR: Z275 GALVANIZED
EF5	GLAZED DOORS AND WINDOWS: BLACK ANODIZED ALUMINUM FRAMES, TEMPERED CLEAR GLASS INSULATED VISION GLASS / LOW-E GLAZING, LOW IRON GLAZING
EF6b	SPANDREL GLAZED DOORS & WINDOWS: BLACK ANODIZED ALUMINUM FRAMES, TEMPERED CLEAR GLASS UNITS WITH COATING ON 3RD SURFACE C/W INSULATED BACKPAN COLOUR: GREY
EF7	H.M. DOORS AND FRAMES: PRODUCT: TBD PREFINISHED HOLLOW METAL DOORS AND FRAMES PAINTED TO MATCH ADJACENT FINISH
EF8b	FASCIA AND SOFFIT - PRE-FINISHED COMPOSITE METAL CANOPY: PRODUCT: TBD COLOUR: PPG-DURANAR BLUE-UC122217 C/W 5/8" DRY JOINT SYSTEM
EF9c	PREFINISHED METAL CAP FLASHING: TO MATCH ICI PAINTS - OBSIDIAN GLASS 24GA. GALVANIZED STEEL SHEET. PROFILE TYPE A.
EF10	EXTERIOR SIGNAGE: SIGNAGE TO BE PROVIDED BY AND INSTALLED BY TENANT. GC TO INSTALL 5/8" PLYWOOD BACKING FOR FUTURE MOUNTING OF SIGNAGE. SIGNAGE CONDUIT ROUGH OUTS TO BE COORDINATED WITH TENANT.
EF12	BOLLARDS: PRODUCT: SUREGUARD POLYURETHANE 8" BOLLARDS @ 5'-0" A.F.F. COLOUR: TBD

1 2025-12-19 ISSUED FOR DP SUBMISSION 1 EMZ

# DATE DESCRIPTION BY



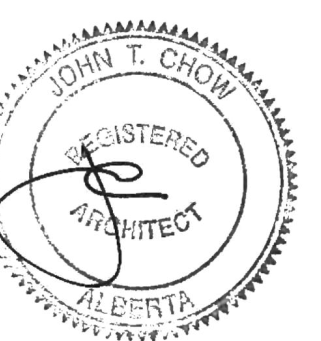
ENRIGT

PROJECT BELVEDERE SITE C

1825 92 ST SE AND GARDEN HEIGHTS  
PLAN 1858AD, BLOCK 5  
CALGARY, AB

DRAWING UNIT C1.3 ELEVATIONS

PROJECT NO. 24.057P01  
PROJECT DATE 2025-12-19  
DRAWN BY EMZ  
CHECKED BY DEM  
SCALE 1:100

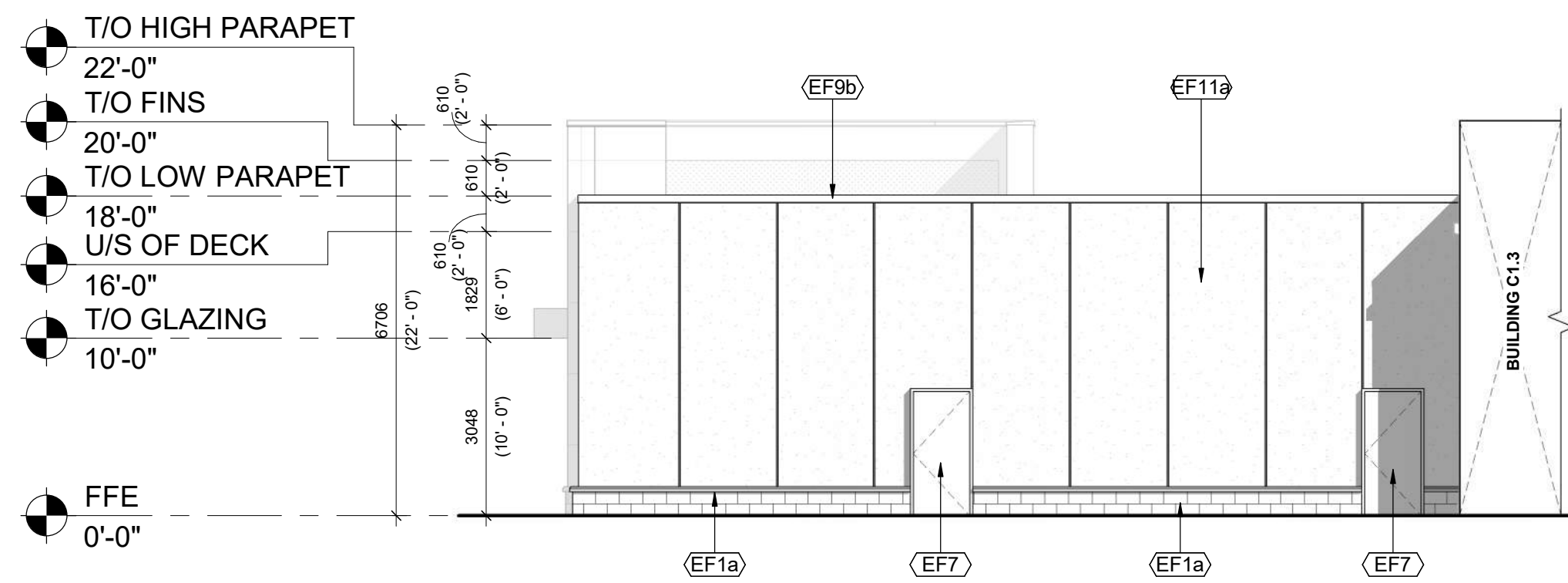


DRAWING NO. A203-C1.3 REV. 1

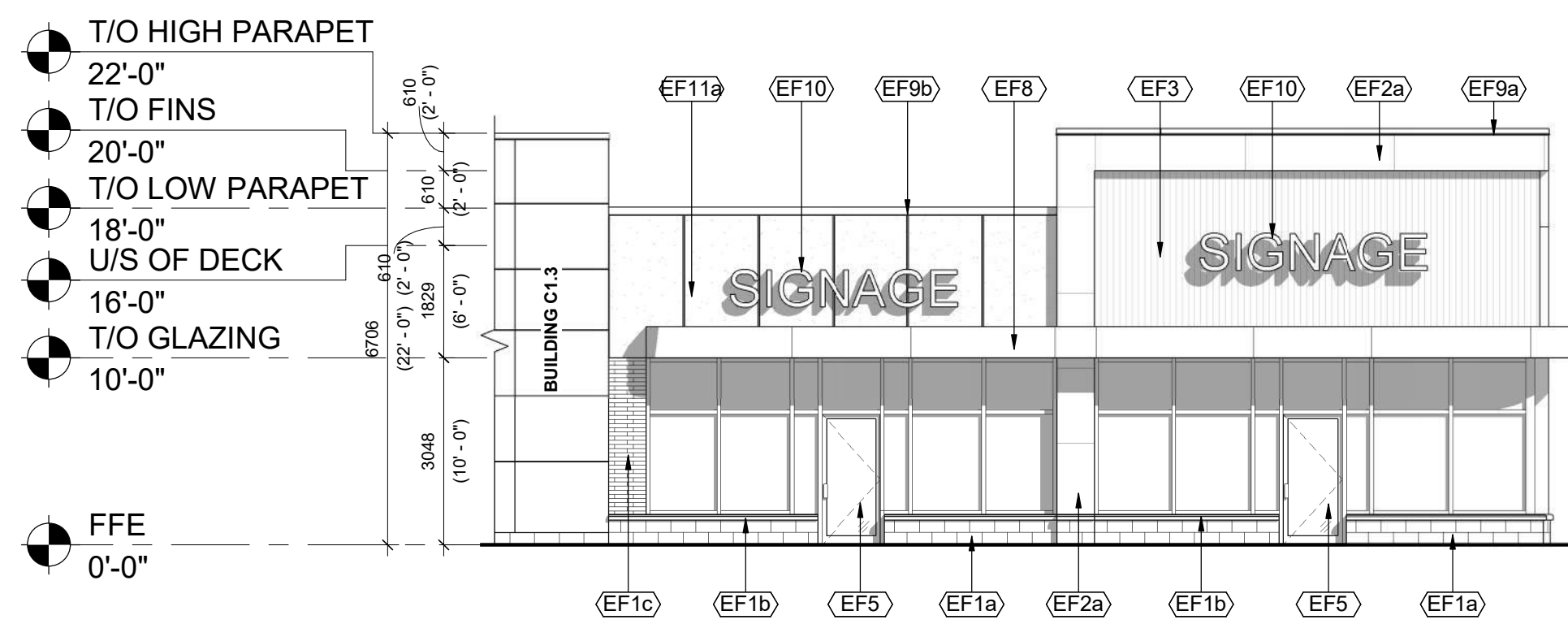
This drawing, as an instrument of service, is provided by and is the property of Turner Fleischer. The contractor must verify and accept responsibility for all dimensions and conditions on site and must notify Turner Fleischer of any variations from the supplied information. This drawing is not to be used for any other project. The architect is not responsible for the accuracy of survey, structural, mechanical, electrical, etc. information shown on this drawing. Refer to the appropriate consultant's drawings before proceeding with the work. Construction must conform to all applicable codes and requirements of all applicable governing jurisdictions. The contractor working from drawings not specifically marked "For Construction" must assume full responsibility and bear costs for any corrections or damage resulting from his work.



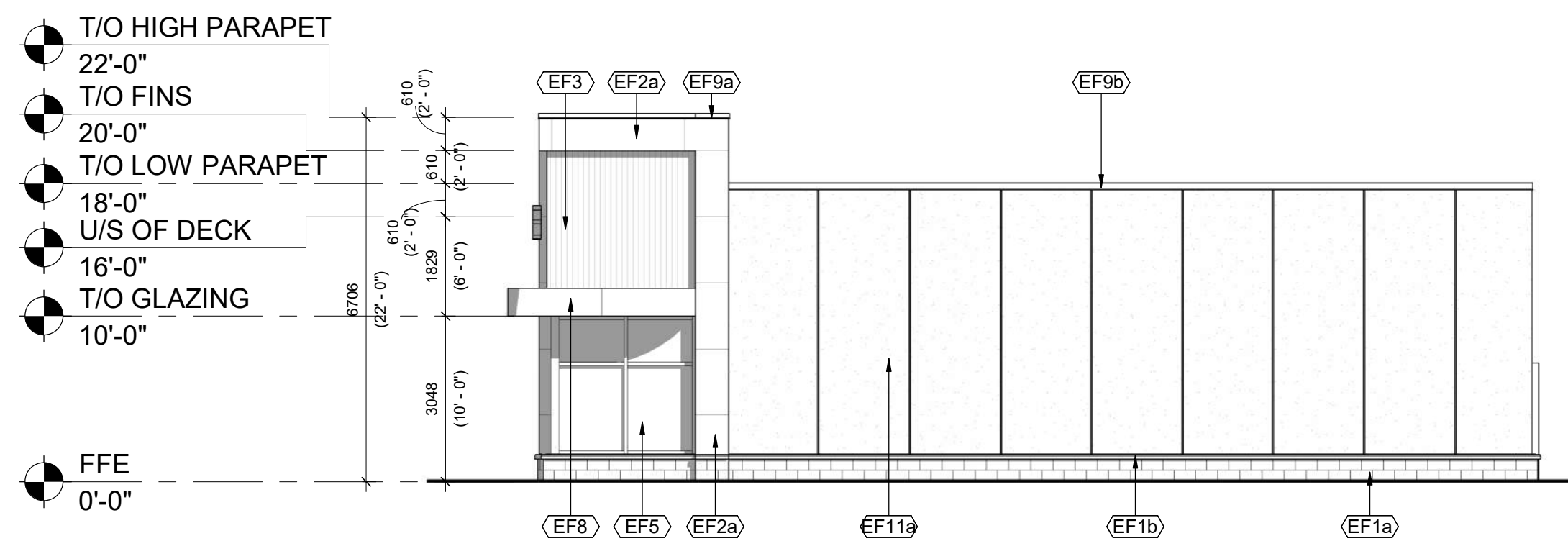
EXTERIOR FINISH SCHEDULE	
Material: Mark	DESCRIPTION
EF1a	ARCHITECTURAL BLOCK: PRODUCT: SHOULDER - ARCHITECTURAL CONCRETE BLOCKS W/ SILL PROFILE: DIMENSIONAL STONE 3 1/2"(W) x 7 1/2"(H) x 15 3/8"(L) (UNLESS NOTED OTHERWISE) COLOUR: COLBY FINISH: SMOOTH MORTAR: SOLOMON 97A SUPER BLACK CONTROL JOINT AND CAULKING COLOUR TO MATCH MASONRY UNIT COLOUR
EF1b	CONCRETE PRECAST SILLS: PRODUCT: SHOULDER CONCRETE SILL PROFILE: 604 SLOPED SILL WITH DRIP EDGE COLOUR: COLBY (COLOUR TO MATCH BLOCK BELOW) FINISH: SMOOTH MORTAR: SOLOMON 97A SUPER BLACK
EF1c	BRICK: PRODUCT: ENDICOTT - FACE BRICK PROFILE: NORMAN - 3 5/8"(W) x 2 1/4"(H) x 11 5/8"(L) (UNLESS NOTED OTHERWISE) COLOUR: MANGANESE IRONSPOT FINISH: SMOOTH MORTAR: SOLOMON COLOURS INC - 60A WHITE CAULKING COLOURS TO MATCH MASONRY UNIT COLOUR
EF2a	ALUMINUM COMPOSITE PANELS: PRODUCT: ALPOLIC MATTE PROFILE: 2 1/4" ACM SYSTEM W/ 1/2" DRY JOINTS BETWEEN PANELS C/W MATCHING TRIMS/FLASHING COLOUR: BSM SLATE BLACK
EF3	VERTICAL METAL SIDING: PRODUCT: VICWEST - BELLARA PLANK SERIES PROFILE: PLANK 90 - 0.59"(D) x 3.64"(H) x 12" (L) FINISH: EXPRESSENCE - ARCHITECTURAL PRINT SERIES COLOUR: RIVER ROCK GRAY 18-0254
EF4	ALUMINUM WALL FINIS: PRODUCT: MAXXIT - FORM EXTERIOR WALL FINIS PROFILE: 2" (W) x 6" (L) COLOUR: TEAK FINISH: STANDARD POWDER COATED PAINT FINISHES (EXTERIOR) FORMALDEHYDE-FREE NOTE: EIFS FINISH TO BE INSTALLED BEHIND ALUMINUM WALL FINIS
EF5	GLAZED DOORS & WINDOWS: BLACK ANODIZED ALUMINUM FRAMES TEMPERED CLEAR INSULATED VISION GLASS / LOW-E GLAZING, LOW IRON GLAZING
EF6	SPANDREL GLAZED DOORS & WINDOWS: BLACK ANODIZED ALUMINUM FRAMES TEMPERED CLEAR GLASS UNITS WITH COATING ON 3RD SURFACE C/W INSULATED BACKPAN. COLOUR: OPAC COAT 1-1818 BLACK
EF7	H.M. DOORS & FRAMES: PRODUCT: PREFINISHED HOLLOW METAL DOORS AND FRAMES PAINTED TO MATCH ADJACENT FINISH
EF8	FASCIA AND SOFFIT - ALUMINUM COMPOSITE PANEL: PRODUCT: ALPOLIC MATTE COLOUR: BSM SLATE BLACK
EF9a	PREFINISHED METAL CAP FLASHING: PRE-FINISHED 18 GA. METAL FLASHING COLOUR: BLACK PROFILE TYPE A
EF9b	PREFINISHED METAL CAP FLASHING: PRE-FINISHED 18 GA. METAL FLASHING COLOUR: BLACK PROFILE TYPE B
EF10	EXTERIOR SIGNAGE: SIGNAGE TO BE PROVIDED BY AND INSTALLED BY TENANT. G.C. TO INSTALL 5/8" PLYWOOD BACKING FOR FUTURE MOUNTING OF SIGNAGE. SIGNAGE CONDUIT ROUGH-OUTS TO BE COORDINATED WITH TENANT.
EF11a	EIFS (EXTERIOR INSULATED FINISH SYSTEM): PRODUCT: EIFS ACRYLIC STUCCO DRYVIT COLOUR: 715 LICORICE FINISH: SANDPEBBLE DPR
EF11b	EIFS (EXTERIOR INSULATED FINISH SYSTEM): PRODUCT: EIFS ACRYLIC STUCCO DRYVIT COLOUR: MATCH TO BENJAMIN MOORE RAINFOREST FOLIAGE #2040-10 FINISH: SANDPEBBLE DPR NOTE: EIFS FINISH TO BE INSTALLED BEHIND ALUMINUM WALL FINIS



3 UNIT C1.4 & C1.5 EAST ELEVATION  
A204-C1.4 1:100



2 UNIT C1.4 & C1.5 WEST ELEVATION  
A204-C1.4 1:100



1 UNIT C1.4 & C1.5 SOUTH ELEVATION  
A204-C1.4 1:100

1	2025-12-19	ISSUED FOR DP SUBMISSION 1	AMC
#	DATE	DESCRIPTION	BY



PROJECT  
**BELVEDERE SITE C**  
1825 92 ST SE AND GARDEN HEIGHTS  
PLAN 1858AD, BLOCK 5  
CALGARY, AB

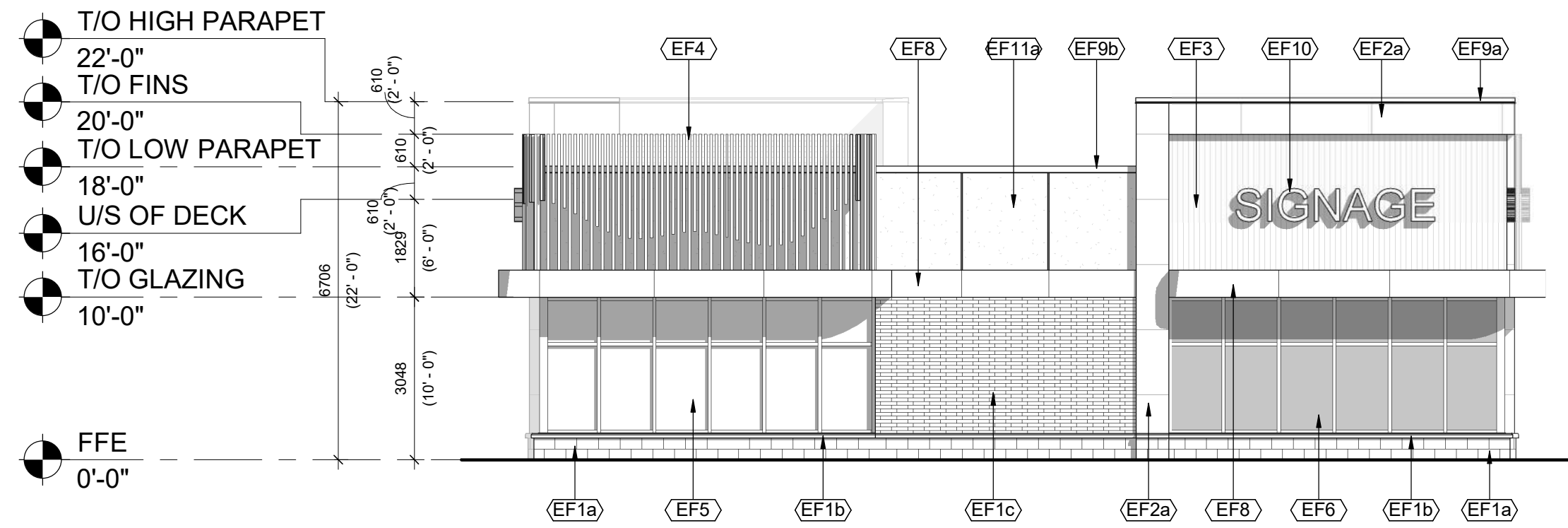
DRAWING  
**UNIT C1.4 & C1.5 ELEVATIONS**

PROJECT NO. 24.057P01	
PROJECT DATE 2025-12-12	
DRAWN BY AMC	
CHECKED BY DEM	
SCALE 1:100	

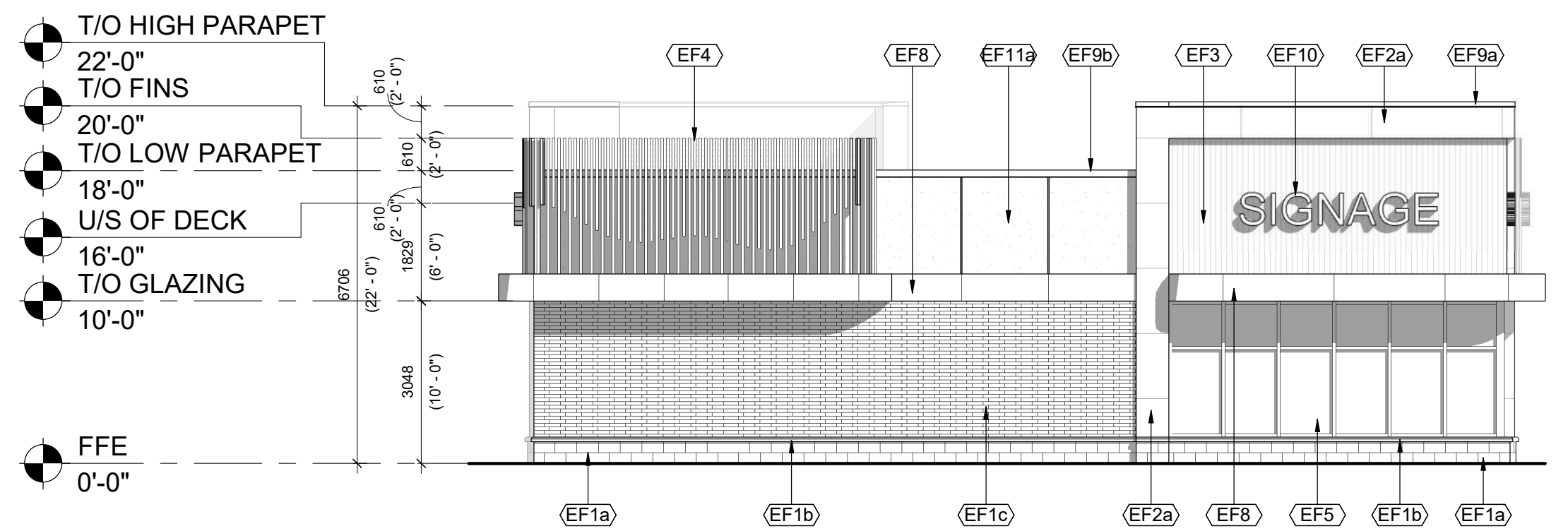
This drawing, as an instrument of service, is provided by and is the property of Turner Fleischer. The contractor must verify and accept responsibility for all dimensions and conditions on site and must notify Turner Fleischer of any variations from the supplied information. This drawing is not to be used for any other project without the written consent of Turner Fleischer. Information shown on this drawing is for the contractor's use only and is not to be used for any other project. The contractor must ensure that all applicable codes and requirements of all applicable governing jurisdictions are followed. The contractor working from drawings not specifically marked "For Construction" must assume full responsibility and bear costs for any corrections or damages resulting from his work.



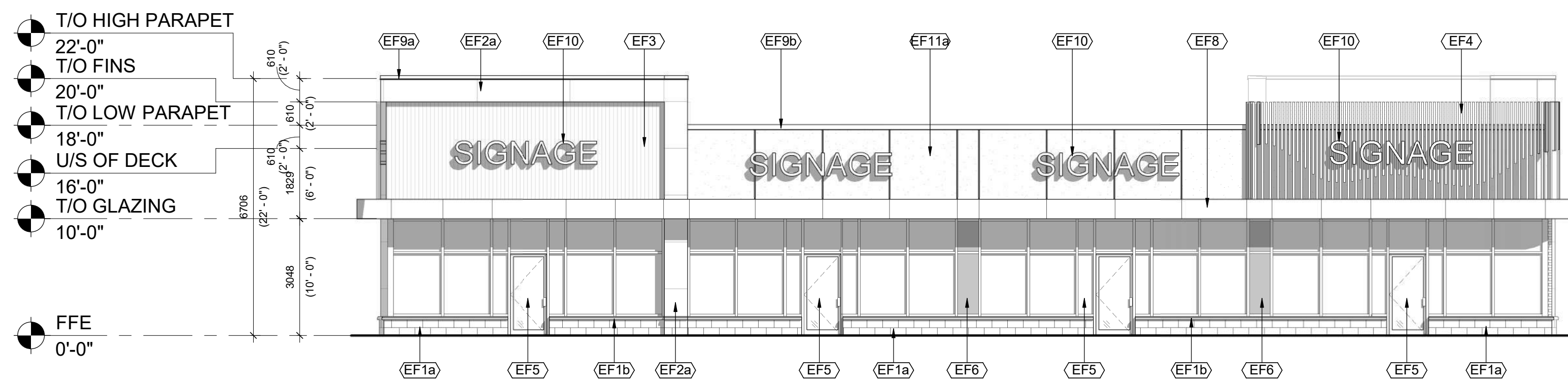
EXTERIOR FINISH SCHEDULE	
Material: Mark	DESCRIPTION
EF1a	ARCHITECTURAL BLOCK: PRODUCT: SHOULDRICE - ARCHITECTURAL CONCRETE BLOCKS W/ SILL PROFILE: DIMENSIONAL STONE 3 1/2"(W) x 7 1/2"(H) x 15 3/8"(L) (UNLESS NOTED OTHERWISE) COLOUR: COLBY FINISH: SMOOTH MORTAR: SOLOMON 97A SUPER BLACK CONTROL JOINT AND CAULKING COLOUR TO MATCH MASONRY UNIT COLOUR
EF1b	CONCRETE PRECAST SILL: PRODUCT: SHOULDRICE CONCRETE SILL PROFILE: 60A SLOPED SILL WITH DRIP EDGE COLOUR: COLBY (COLOUR TO MATCH BLOCK BELOW) FINISH: SMOOTH MORTAR: SOLOMON 97A SUPER BLACK
EF1c	BRICK: PRODUCT: ENDICOTT - FACE BRICK PROFILE: NORMAN - 3 5/8"(W) x 2 1/4"(H) x 11 5/8"(L) (UNLESS NOTED OTHERWISE) COLOUR: MANGANESE IRONSPOT FINISH: SMOOTH MORTAR: SOLOMON COLOURS INC - 60A WHITE CAULKING COLOURS TO MATCH MASONRY UNIT COLOUR
EF2a	ALUMINUM COMPOSITE PANELS: PRODUCT: ALPOLIC MATTE PROFILE: 2 1/4" ACM SYSTEM W/ 1/2" DRY JOINTS BETWEEN PANELS C/W MATCHING TRIMS/FLASHING COLOUR: BSM SLATE BLACK
EF3	VERTICAL METAL SIDING: PRODUCT: VICWEST - BELLARA PLANK SERIES PROFILE: PLANK 90 - 0.59(D) x 3.64(H) x 12" (L) FINISH: EXPRESSENCE - ARCHITECTURAL PRINT SERIES COLOUR: RIVER ROCK GRAY 18-0254
EF4	ALUMINUM WALL FINIS: PRODUCT: MAXXIT - FORM EXTERIOR WALL FINIS PROFILE: 2" (W) x 6" (L) COLOUR: TEAK FINISH: STANDARD POWDER COATED PAINT FINISHES (EXTERIOR) FORMALDEHYDE-FREE NOTE: EIFS FINISH TO BE INSTALLED BEHIND ALUMINUM WALL FINIS
EF5	GLAZED DOORS & WINDOWS: BLACK ANODIZED ALUMINUM FRAMES; TEMPERED CLEAR INSULATED VISION GLASS / LOW-E GLAZING, LOW IRON GLAZING
EF6	SPANDREL GLAZED DOORS & WINDOWS: BLACK ANODIZED ALUMINUM FRAMES; TEMPERED CLEAR GLASS UNITS WITH COATING ON 3RD SURFACE C/W INSULATED BACKPAN. COLOUR: SPACI-COAT 1-1818 BLACK
EF7	H.M. DOORS & FRAMES: PRODUCT: PREFINISHED HOLLOW METAL DOORS AND FRAMES PAINTED TO MATCH ADJACENT FINISH
EF8	FASCIA AND SOFFIT - ALUMINUM COMPOSITE PANEL: PRODUCT: ALPOLIC MATTE COLOUR: BSM SLATE BLACK
EF9a	PREFINISHED METAL CAP FLASHING: PRE-FINISHED 18 GA. METAL FLASHING COLOUR: BLACK PROFILE TYPE A
EF9b	PREFINISHED METAL CAP FLASHING: PRE-FINISHED 18 GA. METAL FLASHING COLOUR: BLACK PROFILE TYPE B
EF10	EXTERIOR SIGNAGE: SIGNAGE TO BE PROVIDED BY AND INSTALLED BY TENANT. G.C. TO INSTALL 5/8" PLYWOOD BACKING FOR FUTURE MOUNTING OF SIGNAGE. SIGNAGE CONDUIT ROUGH-OUTS TO BE COORDINATED WITH TENANT.
EF11a	EIFS (EXTERIOR INSULATED FINISH SYSTEM): PRODUCT: EIFS ACRYLIC STUCCO DRYVIT COLOUR: 715 LICORICE FINISH: SANDEBBLE DPR
EF11b	EIFS (EXTERIOR INSULATED FINISH SYSTEM): PRODUCT: EIFS ACRYLIC STUCCO DRYVIT COLOUR: MATCH TO BENJAMIN MOORE RAINFOREST FOLIAGE #2040-10 FINISH: SANDEBBLE DPR NOTE: EIFS FINISH TO BE INSTALLED BEHIND ALUMINUM WALL FINIS



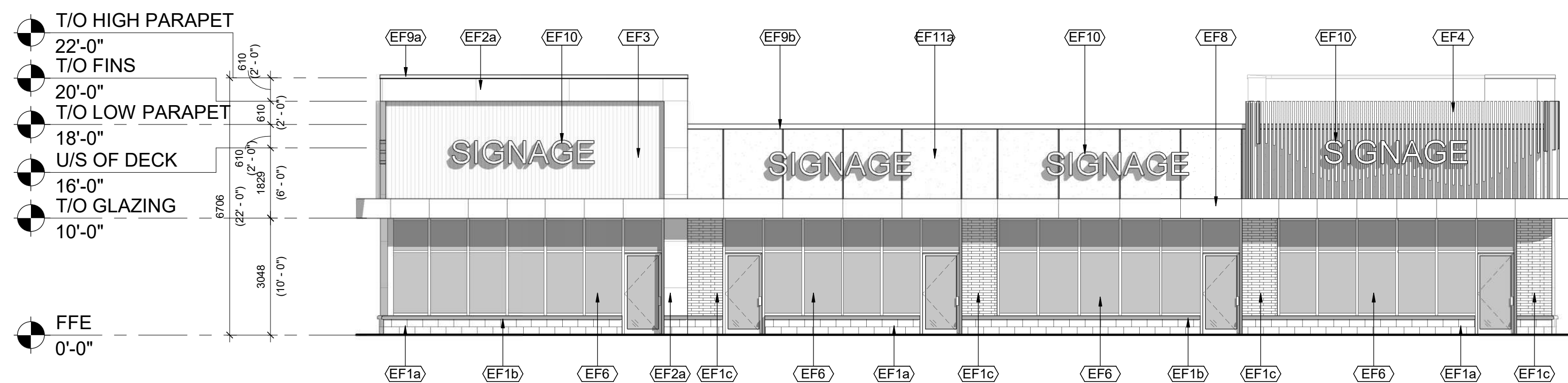
4 BUILDING C2 NORTH ELEVATION  
1 : 100



3 BUILDING C2 SOUTH ELEVATION  
1 : 100



2 BUILDING C2 EAST ELEVATION  
1 : 100



1 BUILDING C2 WEST ELEVATION  
1 : 100

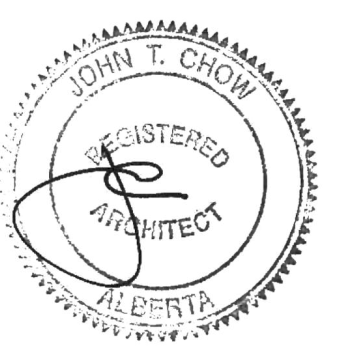
1	2025-12-19	ISSUED FOR DP SUBMISSION 1	AMC
#	DATE	DESCRIPTION	BY



PROJECT  
**BELVEDERE SITE C**  
1825 92 ST SE AND GARDEN HEIGHTS  
PLAN 1858AD, BLOCK 5  
CALGARY, AB

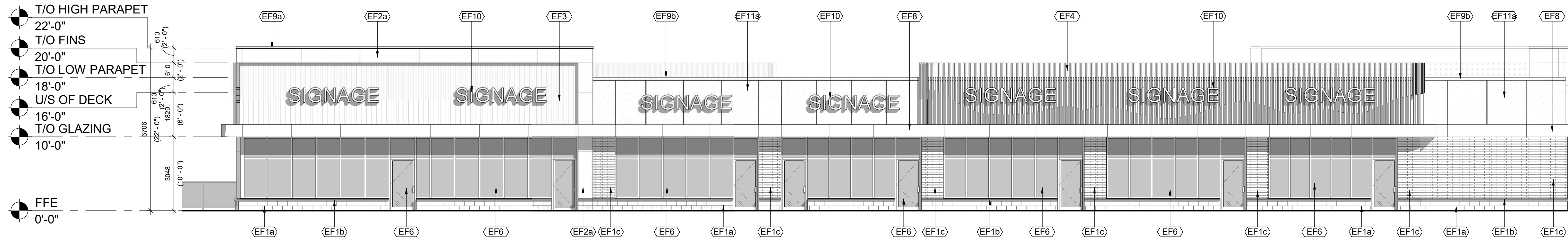
DRAWING  
**BUILDING C2 ELEVATIONS**

PROJECT NO.	24.057P01
PROJECT DATE	2025-12-12
DRAWN BY	AMC
CHECKED BY	DEM
SCALE	1:100

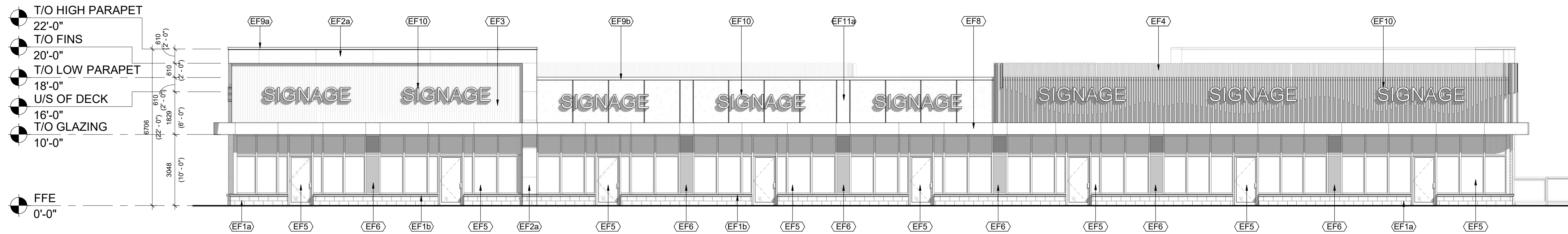


DRAWING NO.	A205-C2	REV.	1
-------------	---------	------	---

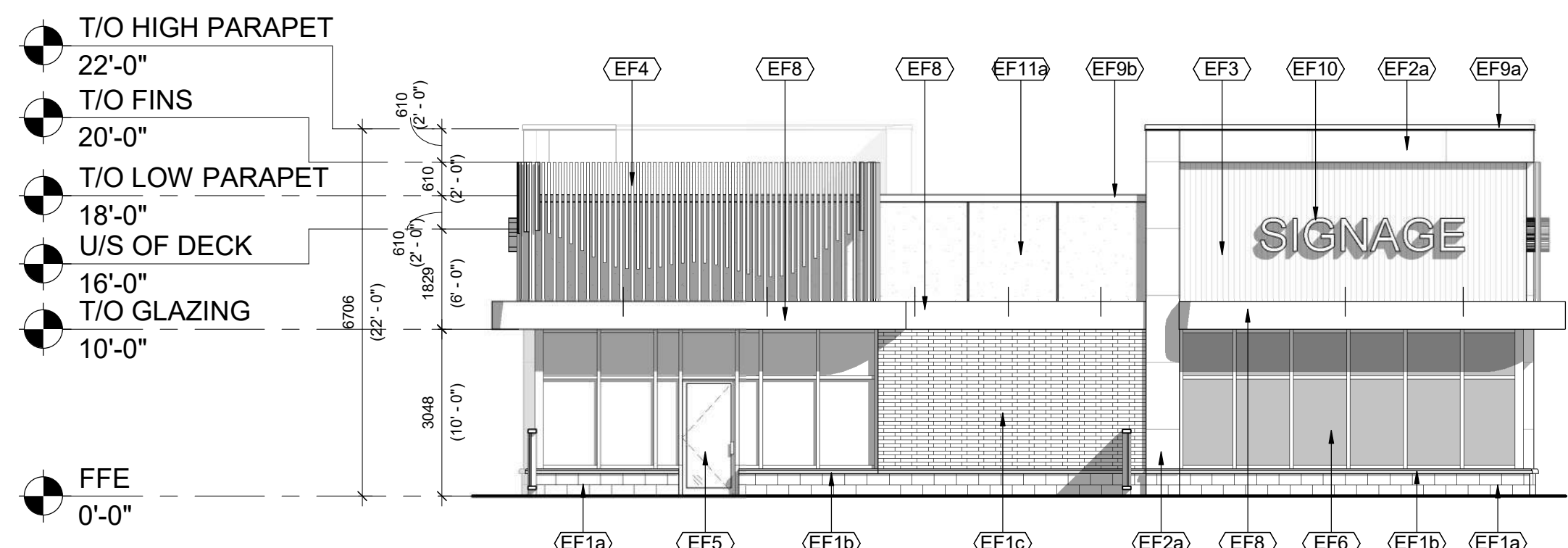
This drawing, as an instrument of service, is provided by and is the property of Turner Fleischer. The contractor must verify and accept responsibility for all dimensions and conditions on site and must notify Turner Fleischer of any variations from the supplied information. This drawing is not to be used for any other project. The architect is not responsible for the accuracy of survey, structural, mechanical, electrical, etc. information shown on this drawing. Refer to the appropriate consultant's drawings before proceeding with the work. Construction must conform to all applicable codes and requirements of all applicable governing jurisdiction. The contractor working from drawings not specifically marked for construction must assume full responsibility and bear costs for any corrections or damage resulting from his work.



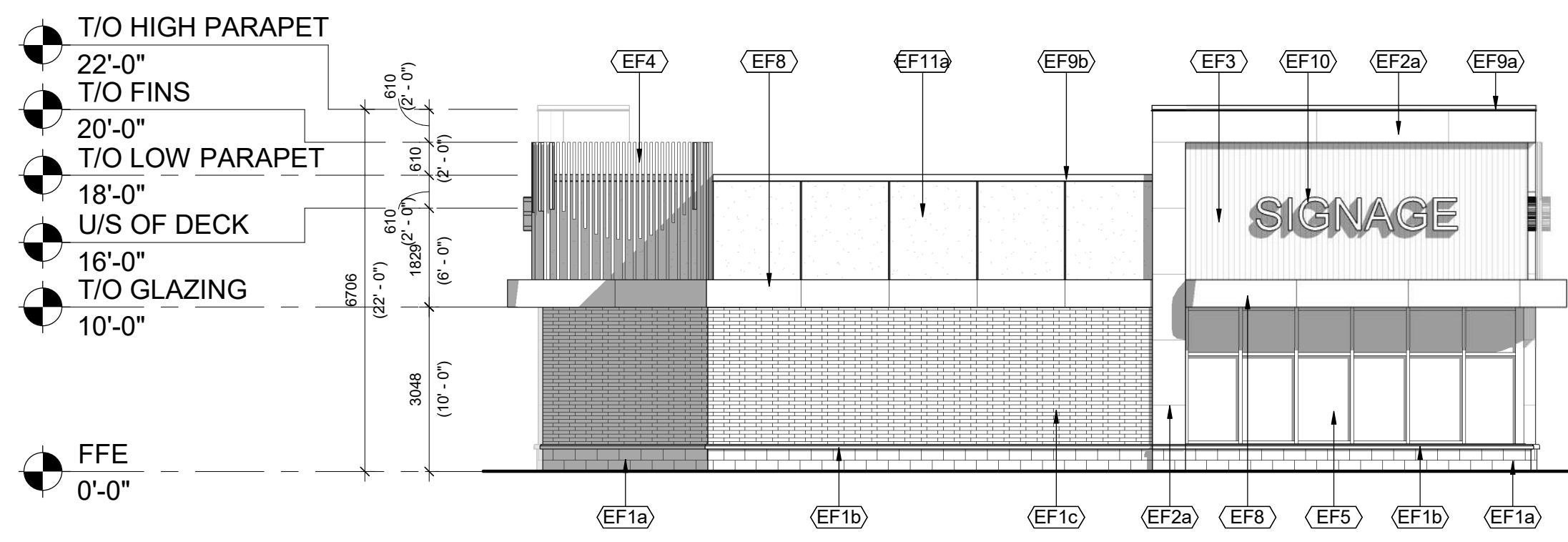
4 BUILDING C3 NORTH ELEVATION  
1 : 100



3 BUILDING C3 SOUTH ELEVATION  
1 : 100



2 BUILDING C3 EAST ELEVATION  
1 : 100



1 BUILDING C3 WEST ELEVATION  
1 : 100

EXTERIOR FINISH SCHEDULE	
Material: Mark	DESCRIPTION
EF1a	ARCHITECTURAL BLOCK: PRODUCT: SHOULDER - ARCHITECTURAL CONCRETE BLOCKS W/ SILL PROFILE: DIMENSIONAL STONE 3 1/2"W x 7 1/2"H x 15 3/8"L (UNLESS NOTED OTHERWISE) COLOUR: COLBY FINISH: SMOOTH MORTAR: SOLOMON 97A SUPER BLACK CONTROL JOINT AND CAULKING COLOUR TO MATCH MASONRY UNIT COLOUR
EF1b	CONCRETE PRECAST SILLS: PRODUCT: SHOULDER CONCRETE SILL PROFILE: 424 SLOPED SILL WITH DRIP EDGE COLOUR: COLBY (COLOUR TO MATCH BLOCK BELOW) FINISH: SMOOTH MORTAR: SOLOMON 97A SUPER BLACK
EF1c	BRICK: PRODUCT: ENDICOTT - FACE BRICK PROFILE: NORMAN - 3 5/8"W x 2 1/4"H x 11 5/8"L (UNLESS NOTED OTHERWISE) COLOUR: MANGANESE IRONSPOT FINISH: SMOOTH MORTAR: SOLOMON COLOURS INC - 60A WHITE CAULKING COLOURS TO MATCH MASONRY UNIT COLOUR
EF2a	ALUMINUM COMPOSITE PANELS: PRODUCT: ALPOLIC MATTE PROFILE: 2 1/4" ACM SYSTEM W/ 1/2" DRY JOINTS BETWEEN PANELS C/W MATCHING TRIMS/FLASHING COLOUR: BSM SLATE BLACK
EF3	VERTICAL METAL SIDING: PRODUCT: VICWEST - BELLARA PLANK SERIES PROFILE: PLANK 90 - 0.59"(D) x 3.64"(H) x 12" L FINISH: EXPRESSE - ARCHITECTURAL PRINT SERIES COLOUR: RIVER ROCK GRAY 18-0254
EF4	ALUMINUM WALL FINNS: PRODUCT: MAXIT - FORM EXTERIOR WALL FINNS PROFILE: 2"W x 6"L COLOUR: TEAK FINISH: STANDARD POWDER COATED PAINT FINISHES (EXTERIOR) FORMALDEHYDE-FREE NOTE: EIFS FINISH TO BE INSTALLED BEHIND ALUMINUM WALL FINNS
EF5	GLAZED DOORS & WINDOWS: BLACK ANODIZED ALUMINUM FRAMES, TEMPERED CLEAR INSULATED VISION GLASS / LOW-E GLAZING, LOW IRON GLAZING
EF6	SPANDREL GLAZED DOORS & WINDOWS: BLACK ANODIZED ALUMINUM FRAMES, TEMPERED CLEAR GLASS UNITS WITH COATING ON 3RD SURFACE C/W INSULATED BACKPAN, COLOUR: OPACI-COAT 1-818 BLACK
EF7	H.M. DOORS & FRAMES: PRODUCT: PREFINISHED HOLLOW METAL DOORS AND FRAMES PAINTED TO MATCH ADJACENT FINISH
EF8	FASCIA AND SOFFIT - ALUMINUM COMPOSITE PANEL: PRODUCT: ALPOLIC MATTE COLOUR: BSM SLATE BLACK
EF9a	PREFINISHED METAL CAP FLASHING: PRE-FINISHED 16 GA. METAL FLASHING COLOUR: BLACK PROFILE TYPE A
EF9b	PREFINISHED METAL CAP FLASHING: PRE-FINISHED 16 GA. METAL FLASHING COLOUR: BLACK PROFILE TYPE B
EF10	EXTERIOR SIGNAGE: SIGNAGE TO BE PROVIDED BY AND INSTALLED BY TENANT. G.C. TO INSTALL 5/8" PLYWOOD BACKING FOR FUTURE MOUNTING OF SIGNAGE. SIGNAGE CONDUIT ROUGH-OUTS TO BE COORDINATED WITH TENANT.
EF11a	EIFS (EXTERIOR INSULATED FINISH SYSTEM): PRODUCT: EIFS ACRYLIC STUCCO DRYVIT COLOUR: T15 LICORICE FINISH: SANDEBBLE DPR
EF11b	EIFS (EXTERIOR INSULATED FINISH SYSTEM): PRODUCT: EIFS ACRYLIC STUCCO DRYVIT COLOUR: MATCH TO BENJAMIN MOORE RAINFOREST FOLIAGE #2040-10 FINISH: SANDEBBLE DPR NOTE: EIFS FINISH TO BE INSTALLED BEHIND ALUMINUM WALL FINNS

#	DATE	ISSUED FOR	DESCRIPTION	BY
1	2025-12-19	ISSUED FOR DP SUBMISSION 1		AMC



PROJECT  
**BELVEDERE SITE C**  
1825 92 ST SE AND GARDEN HEIGHTS  
PLAN 1858AD, BLOCK 5  
CALGARY, AB

DRAWING  
**BUILDING C3 ELEVATIONS**

PROJECT NO. 24.057P01	
PROJECT DATE 2025-12-12	
DRAWN BY AMC	
CHECKED BY DEM	
SCALE 1:100	

