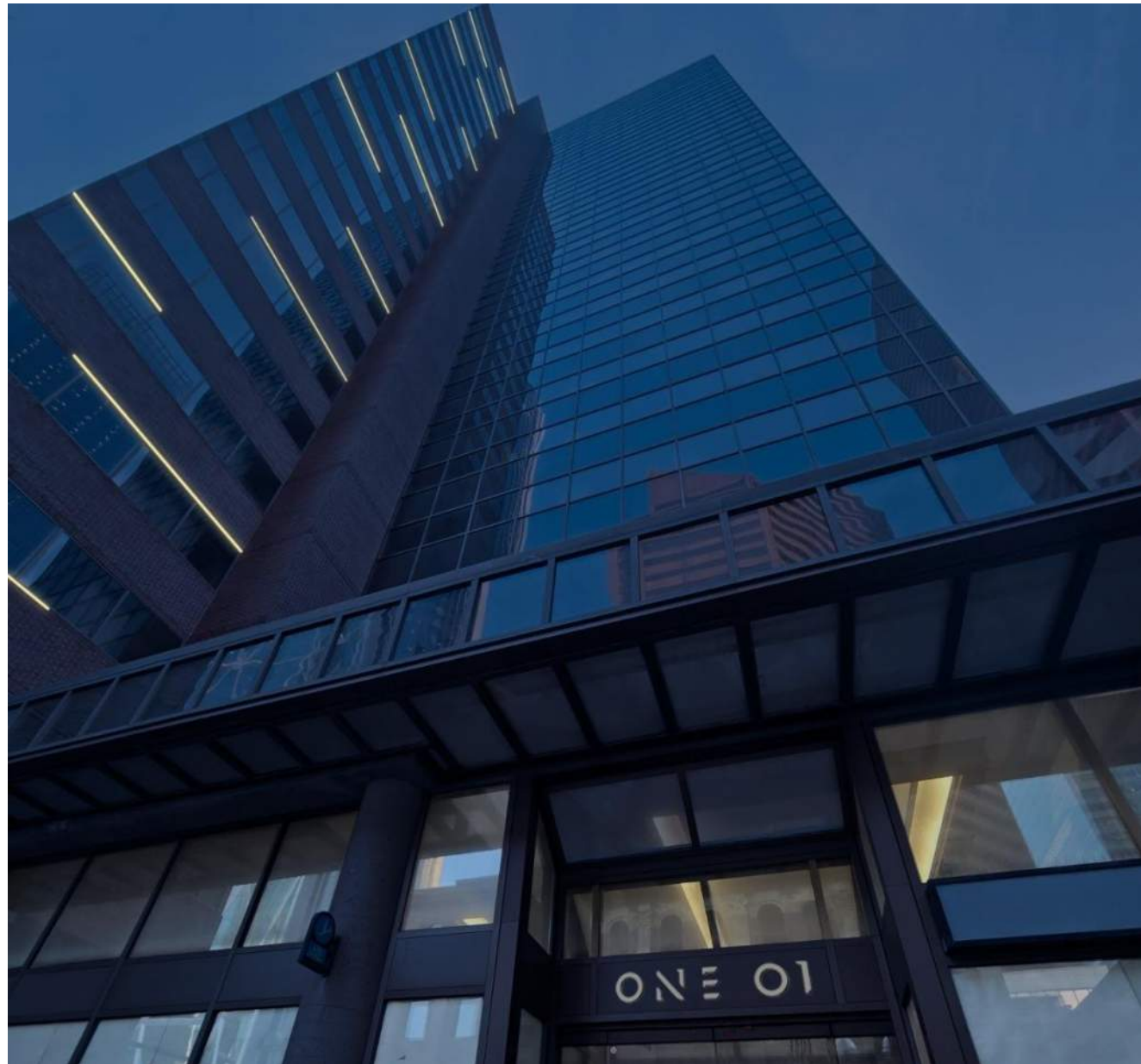
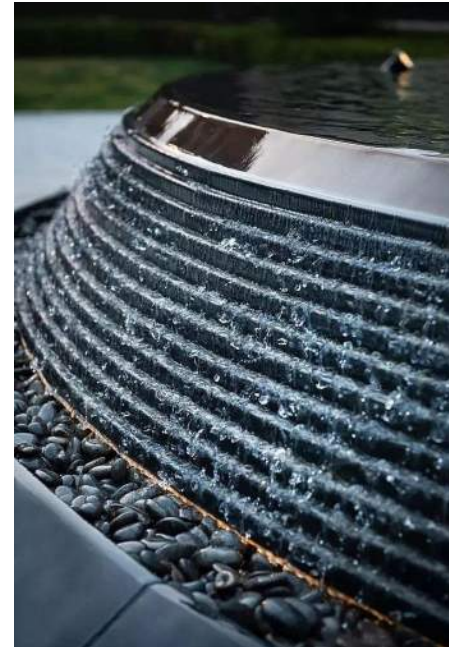


Work stage 1 : Concept Design for Hanover Building Facade
Facade Lighting & Branding

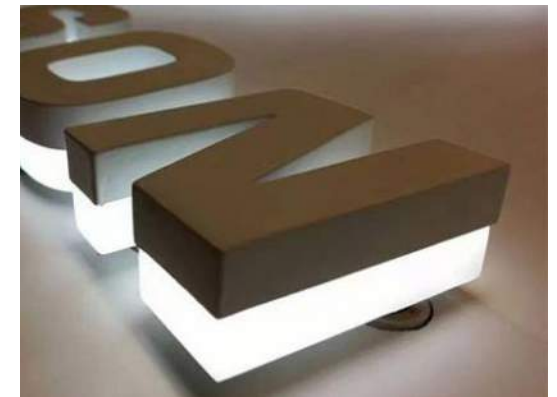
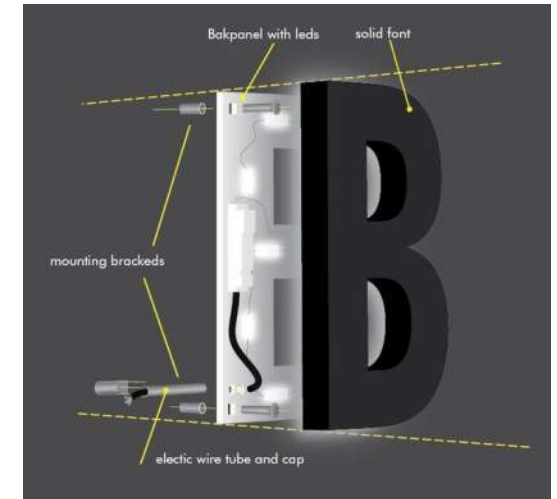








ONLINE 01



HANOVER PLACE CONVERSION

101 5th AVE SW CALGARY, ALBERTA

RE-ISSUED FOR DP
2026-02-25



121 15th AVENUE SE, CALGARY, AB, T2G 1G1
403-460-2277 | info@embeconsulting.ca

DO NOT SCALE DRAWINGS. THE CONTRACTOR SHALL CHECK AND VERIFY ALL DIMENSIONS AND REPORT ANY DISCREPANCIES BEFORE PROCEEDING WITH THE WORKS

NO.	ISSUED	DATE
1.	ISSUED FOR DP	2025-07-17
2.	RE-ISSUED FOR DP	2025-02-25

SYMBOL LEGEND			
SYMBOL	DESCRIPTION	SPECIFICATIONS	MOUNTING
LIGHTING			
[Symbol]	RECESSED DOWNLIGHT LUMINAIRE, TYPE XX	SEE SCHEDULE	CEILING RECESSED
[Symbol]	SURFACE MOUNTED DOWNLIGHT LUMINAIRE, TYPE XX	SEE SCHEDULE	CEILING SURFACE MOUNT
[Symbol]	PENDANT LUMINAIRE, TYPE XX	SEE SCHEDULE	CEILING SUSPENDED
[Symbol]	WALL SCONCE LUMINAIRE, TYPE XX	SEE SCHEDULE	WALL
[Symbol]	TRACK LUMINAIRE CW TRACK HEADS INDICATED	SEE SCHEDULE	CEILING
[Symbol]	LINEAR WALL MOUNT LUMINAIRE, TYPE XX	SEE SCHEDULE	WALL
[Symbol]	SURFACE MOUNTED WRAP LUMINAIRE, LUMINAIRE TYPE XX	SEE SCHEDULE	CEILING SURFACE
[Symbol]	SURFACE/SUSPENDED LUMINAIRE, TYPE XX	SEE SCHEDULE	CEILING SURFACE /SUSPENDED
[Symbol]	1"x1" LUMINAIRE, TYPE XX	SEE SCHEDULE	RECESSED
[Symbol]	2"x2" LUMINAIRE, TYPE XX	SEE SCHEDULE	RECESSED
[Symbol]	2"x4" LUMINAIRE, TYPE XX	SEE SCHEDULE	RECESSED
[Symbol]	STRIP LUMINAIRE, TYPE XX (SEE SCHEDULE FOR LENGTH)	SEE SCHEDULE	CEILING SURFACE /SUSPENDED
[Symbol]	IN GROUND LUMINAIRE, TYPE XX	SEE SCHEDULE	SEE LUMINAIRE SCHEDULE
[Symbol]	EXTERIOR POLE LUMINAIRE (SINGLE HEAD), TYPE XX	SEE SCHEDULE	SEE LUMINAIRE SCHEDULE
[Symbol]	EXTERIOR POLE LUMINAIRE (DOUBLE HEAD), TYPE XX	SEE SCHEDULE	SEE LUMINAIRE SCHEDULE
[Symbol]	EXTERIOR POLE LUMINAIRE (FOUR HEAD), TYPE XX	SEE SCHEDULE	SEE LUMINAIRE SCHEDULE
[Symbol]	BOLLARD, TYPE XX	SEE SCHEDULE	SEE LUMINAIRE SCHEDULE
EMERGENCY LIGHTING			
[Symbol]	WALL MOUNTED EXIT LIGHT, SEE FLOOR PLAN FOR DIRECTIONAL ARROWS WHERE APPLICABLE	SEE SCHEDULE	WALL 84in/2134mm
[Symbol]	EXIT LIGHT, SEE FLOOR PLAN FOR DIRECTIONAL ARROWS WHERE APPLICABLE	SEE SCHEDULE	CEILING 144" AFF
[Symbol]	EXIT LIGHT CW BATTERY PACK & REMOTE HEADS, SEE FLOOR PLAN FOR DIRECTIONAL ARROWS WHERE APPLICABLE	SEE SCHEDULE	WALL 84in/2134mm
[Symbol]	EMERGENCY DOUBLE REMOTE HEADS	SEE SCHEDULE	6" BELOW CEILING OR WALL 84in/2134mm
[Symbol]	EMERGENCY DOUBLE REMOTE HEADS	SEE SCHEDULE	CEILING
[Symbol]	VANDAL PROOF EMERGENCY DOUBLE REMOTE HEADS	SEE SCHEDULE	6" BELOW CEILING OR WALL 84in/2134mm
[Symbol]	VANDAL PROOF EMER. DOUBLE REMOTE HEADS	SEE SCHEDULE	CEILING
[Symbol]	BATTERY PACK CW REMOTE HEADS	SEE SCHEDULE	WALL 84in/2134mm
LIGHTING CONTROLS			
[Symbol]	SINGLE POLE SWITCH, 15A	LEVITON DECORA SERIES, WHITE	WALL 45in/1150mm
[Symbol]	3-WAY SWITCH, 15A	LEVITON DECORA SERIES, WHITE	WALL 45in/1150mm
[Symbol]	SINGLE POLE SWITCH 'a' - SEE CIRCUIT FOR CONTROL	LEVITON DECORA SERIES, WHITE	WALL 45in/1150mm
[Symbol]	DIMMER SWITCH - SEE CIRCUIT FOR CONTROLS	LEVITON DECORA SERIES, WHITE	WALL 45in/1150mm
[Symbol]	VACANCY SWITCH	ACUITY WSX-VA-WH	WALL 45in/1150mm
[Symbol]	VARIABLE SPEED SWITCH	ACUITY GR2400 CHELSEA DIGITAL SWITCH WSX-VA-WH	WALL 45in/1150mm
[Symbol]	MASTER SWITCH - SEE LIGHTING CONTROL DETAILS		WALL 45in/1150mm
[Symbol]	OCCUPANCY SENSOR	ACUITY WSX SERIES	CEILING
[Symbol]	DIMMING OCCUPANCY SENSOR	ACUITY WSX SERIES	CEILING
[Symbol]	OCCUPANCY SENSOR WALL MOUNT	ACUITY WSX SERIES	WALL 45in/1150mm
[Symbol]	DIMMING OCCUPANCY SENSOR WALL MOUNT	ACUITY CM-ADC SERIES	WALL 45in/1150mm
[Symbol]	DAYLIGHT SENSOR	ACUITY CM-ADC SERIES	CEILING
[Symbol]	WALL MOUNTED PHOTO CELL	SEE DRAWING	SEE DRAWING WALL 45in/1150mm
[Symbol]	TIME CLOCK	SEE DRAWING	SEE DRAWING WALL 45in/1150mm

POWER			
[Symbol]	DUPLEX RECEPTACLE - 120V/15A (5-15R)	LEVITON SERIES - WHITE	12in/305mm OR AS NOTED
[Symbol]	FOURPLEX RECEPTACLE - 120V/15A (5-15R)	LEVITON SERIES - WHITE	12in/305mm OR AS NOTED
[Symbol]	FOURPLEX RECEPTACLE - 120V/20A (5-20R)	LEVITON SERIES - WHITE	12in/305mm OR AS NOTED
[Symbol]	GFCI DUPLEX RECEPTACLE - 120V/15A (5-15RA)	LEVITON SMARTLOCK SERIES, WHITE	12in/305mm OR AS NOTED
[Symbol]	DUPLEX RECEPTACLE - 120V/20A (5-20R)	LEVITON SERIES - WHITE	12in/305mm OR AS NOTED
[Symbol]	GFCI DUPLEX RECEPTACLE - 120V/20A (5-20RA)	LEVITON SMARTLOCK SERIES, WHITE	12in/305mm OR AS NOTED
[Symbol]	GFCI FOURPLEX RECEPTACLE - 120V/15A (5-15RA)	LEVITON SMARTLOCK SERIES, WHITE	12in/305mm OR AS NOTED
[Symbol]	GFCI FOURPLEX RECEPTACLE - 120V/20A (5-20RA)	LEVITON SMARTLOCK SERIES, WHITE	12in/305mm OR AS NOTED
[Symbol]	GFCI FOURPLEX RECEPTACLE - SWITCHED	LEVITON SMARTLOCK SERIES, WHITE	12in/305mm OR AS NOTED
[Symbol]	TAMPER PROOF RECEPTACLE - 120V/15A	LEVITON AFTR1 SERIES	12in/305mm OR AS NOTED
[Symbol]	TAMPER PROOF RECEPTACLE - 120V/20A	LEVITON AFTR1 SERIES	12in/305mm OR AS NOTED
[Symbol]	USB DUPLEX RECEPTACLE - 120V/15A	LEVITON T5632, WHITE	12in/305mm OR AS NOTED
[Symbol]	USB DUPLEX RECEPTACLE - 120V/20A	LEVITON T5632, WHITE	12in/305mm OR AS NOTED
[Symbol]	HOSPITAL GRADE DUPLEX RECEPTACLE	LEVITON HOSPITAL GRADE SMARTLOCK SLIM	12in/305mm OR AS NOTED
[Symbol]	HOSPITAL GRADE FOURPLEX RECEPTACLE	LEVITON HOSPITAL GRADE SMARTLOCK SLIM	12in/305mm OR AS NOTED
[Symbol]	HOSPITAL GRADE GFCI DUPLEX RECEPTACLE	LEVITON HOSPITAL GRADE SMARTLOCK SLIM	12in/305mm OR AS NOTED
[Symbol]	HOSPITAL GRADE GFCI FOURPLEX RECEPTACLE	LEVITON HOSPITAL GRADE SMARTLOCK SLIM	12in/305mm OR AS NOTED
[Symbol]	HOSPITAL GRADE DUPLEX RECEPTACLE - 120V/20A	LEVITON HOSPITAL GRADE SMARTLOCK SLIM	12in/305mm OR AS NOTED
[Symbol]	HOSPITAL GRADE GFCI DUPLEX RECEPTACLE - 120V/20A	LEVITON HOSPITAL GRADE SMARTLOCK SLIM	12in/305mm OR AS NOTED
[Symbol]	DUPLEX RECEPTACLE - SWITCHED		12in/305mm OR AS NOTED
[Symbol]	PARKING LOT DUPLEX RECEPTACLE IN POST		SEE DETAIL
[Symbol]	PARKING LOT SINGLE RECEPTACLE IN POST		SEE DETAIL
[Symbol]	ISOLATED GROUND RECEPTACLE		12in/305mm OR AS NOTED
[Symbol]	FLOOR BOX CW RECEPTACLE & DATA OUTLET (SEE DRAWING FOR QUANTITY AND RECEPTACLE TYPES)		FLOOR MOUNTED
[Symbol]	POWER PAC POLE		FLOOR MOUNTED
[Symbol]	VACUUM OUTLET		
[Symbol]	SPECIAL RECEPTACLE	LEVITON SPEC GRADE, WHITE	12in/305mm OR AS NOTED
[Symbol]	HARDWIRED CONNECTION		12in/305mm OR AS NOTED
[Symbol]	DISCONNECT SWITCH		60in/1525mm OR AS NOTED
[Symbol]	JUNCTION BOX		
[Symbol]	MOTOR		
[Symbol]	MAGNETIC STARTER		WALL 45in/1150mm
[Symbol]	SPEAKER		CEILING
[Symbol]	SPEAKER		
[Symbol]	THERMOSTAT		WALL MOUNTED
[Symbol]	CEILING FAN		CEILING
[Symbol]	RADIANT HEATER		WALL MOUNTED
[Symbol]	BASEBOARD HEATER		WALL MOUNTED
[Symbol]	FORCE FLOW HEATER		WALL MOUNTED
[Symbol]	ELECTRICAL PANEL - SEE PANEL SCHEDULE		WALL MOUNTED
[Symbol]	TELEPHONE TERMINAL BOARD		WALL MOUNTED
[Symbol]	TRANSFORMER		
FIRE ALARM			
[Symbol]	FIRE ALARM CONTROL PANEL	SIMPLEX OR APPROVED EQUIVALENT	2400mm MAX AT TOP OF PANEL

[Symbol]	FIRE ALARM ANNUNCIATOR PANEL	SIMPLEX OR APPROVED EQUIVALENT	600mm MIN-1800mm MAX
[Symbol]	FIRE ALARM SMOKE DETECTOR	SIMPLEX OR APPROVED EQUIVALENT	CEILING
[Symbol]	FIRE ALARM HEAT DETECTOR	SIMPLEX OR APPROVED EQUIVALENT	CEILING
[Symbol]	FIRE ALARM COMBINATION HEAT/SMOKE DETECTOR	SIMPLEX OR APPROVED EQUIVALENT	CEILING
[Symbol]	FIRE ALARM RELAY DEVICE	SIMPLEX OR APPROVED EQUIVALENT	WALL
[Symbol]	FIRE ALARM MANUAL PULL STATION	SIMPLEX OR APPROVED EQUIVALENT	45in/1150mm
[Symbol]	FIRE ALARM COMBINATION HORN/STROBE 15cd UNLESS OTHERWISE INDICATED	SIMPLEX OR APPROVED EQUIVALENT	84in/2134mm
[Symbol]	FIRE ALARM STROBE 15cd UNLESS OTHERWISE INDICATED	SIMPLEX OR APPROVED EQUIVALENT	84in/2134mm
[Symbol]	FIRE ALARM HORN	SIMPLEX OR APPROVED EQUIVALENT	94in/2400mm
[Symbol]	LOW TEMPERATURE SENSOR	HONEYWELL T-1000	WALL
[Symbol]	FIRE ALARM SPEAKER 1W UNLESS OTHERWISE INDICATED	SIMPLEX OR APPROVED EQUIVALENT	CEILING
[Symbol]	FIRE ALARM COMBINATION SPEAKER STROBE 1W/15cd UNLESS OTHERWISE INDICATED	SIMPLEX OR APPROVED EQUIVALENT	84in/2134mm
[Symbol]	FIRE ALARM SPRINKLER TAMPER SWITCH	SIMPLEX OR APPROVED EQUIVALENT	
[Symbol]	FIRE ALARM SPRINKLER FLOW SWITCH	SIMPLEX OR APPROVED EQUIVALENT	
[Symbol]	FIRE ALARM COMBINATION BELL/STROBE 15cd UNLESS OTHERWISE INDICATED	SIMPLEX OR APPROVED EQUIVALENT	84in/2134mm
[Symbol]	FIRE ALARM BELL	SIMPLEX OR APPROVED EQUIVALENT	84in/2134mm
[Symbol]	SUITE LOW FREQUENCY HORN	SIMPLEX OR APPROVED EQUIVALENT	84in/2134mm
[Symbol]	SMOKE ALARM CW INTEGRAL CO ALARM	SIMPLEX OR APPROVED EQUIVALENT	CEILING
[Symbol]	FIRE ALARM ISOLATION MODULE (SEE FLOOR PLAN FOR NUMBERING)	SIMPLEX OR APPROVED EQUIVALENT	
[Symbol]	EMERGENCY FIRE PHONE	SIMPLEX OR APPROVED EQUIVALENT	57in/1450mm
[Symbol]	CO ALARM	SIMPLEX OR APPROVED EQUIVALENT	18in/457mm
[Symbol]	FIRE ALARM END OF LINE RESISTOR	SIMPLEX OR APPROVED EQUIVALENT	47in/1200mm
SECURITY			
[Symbol]	CARD READER		WALL 45in/1150mm
[Symbol]	KEY PAD		WALL 45in/1150mm
[Symbol]	MAGNETIC DOOR HOLD OPEN DEVICE		WALL 45in/1150mm
[Symbol]	HANDICAP PUSH BUTTON		WALL 45in/1150mm
[Symbol]	BUZZER		WALL 45in/1150mm
[Symbol]	DOOR RELEASE		WALL 45in/1150mm
[Symbol]	MAGNETIC LOCK		WALL 45in/1150mm
[Symbol]	ALARM CONTACT		WALL 45in/1150mm
[Symbol]	SECURITY MOTION SENSOR		SEE DRAWING
[Symbol]	SECURITY CAMERA		SEE DRAWING
[Symbol]	PUSH BUTTON		43in/1100mm MAX
[Symbol]	ELECTRIC STRIKE		WALL 45in/1150mm
[Symbol]	MOTION DETECTOR		WALL 45in/1150mm
[Symbol]	MOTION DETECTOR		CEILING
COMMUNICATIONS			
[Symbol]	WIRELESS ACCESS POINT		CEILING
[Symbol]	SECURITY CONTROL PANEL		SEE DRAWING
[Symbol]	DATA OUTLET (4PORT WITH 4 DATA LINE) NUMBER(4) INDICATES NUMBER OF PORTS(4) AND NUMBER OF DATA LINE(4)		12in/305mm OR AS NOTED
[Symbol]	VOICE AND DATA COMM. OUTLET (2PORT WITH 2 DATA LINE)		12in/305mm OR AS NOTED

[Symbol]	2 VOICE AND 2 DATA COMM. OUTLET (4PORT WITH 4 DATA LINE)		12in/305mm OR AS NOTED
[Symbol]	TELEPHONE OUTLET (2 PORT WITH 2 DATA LINE)		12in/305mm OR AS NOTED
[Symbol]	DATA OUTLET (2PORT WITH 2 DATA LINE)		12in/305mm OR AS NOTED
[Symbol]	TELEVISION OUTLET (HDMI AND COAX)		60in/1524mm OR AS NOTED
TAGS/OTHER			
[Symbol]	LUMINAIRE TAG - SEE LUMINAIRE SCHEDULE		
[Symbol]	KITCHEN/ELECTRICAL EQUIPMENT TAG		
[Symbol]	MECHANICAL EQUIPMENT TAG		
[Symbol]	A.F.F. ABOVE FINISHED FLOOR		
[Symbol]	A.C. ABOVE COUNTER		
[Symbol]	NL NIGHT LIGHT - CIRCUIT TO NIGHT LIGHT BREAKER		
[Symbol]	ER EXISTING TO REMAIN		
[Symbol]	WP WEATHERPROOF		
[Symbol]	RL'D RELOCATED		
[Symbol]	R REMOVE		
[Symbol]	RL RELOCATE		
[Symbol]	A-XX PANEL 'X', CIRCUIT XX		
[Symbol]	CONDUIT HOME RUN		
[Symbol]	CIRCLE DENOTES CEILING MOUNTED DEVICE		
[Symbol]	SQUARE DENOTES FLOOR MOUNTED DEVICE		
[Symbol]	EQUIPMENT TAG - SEE SCHEDULES		

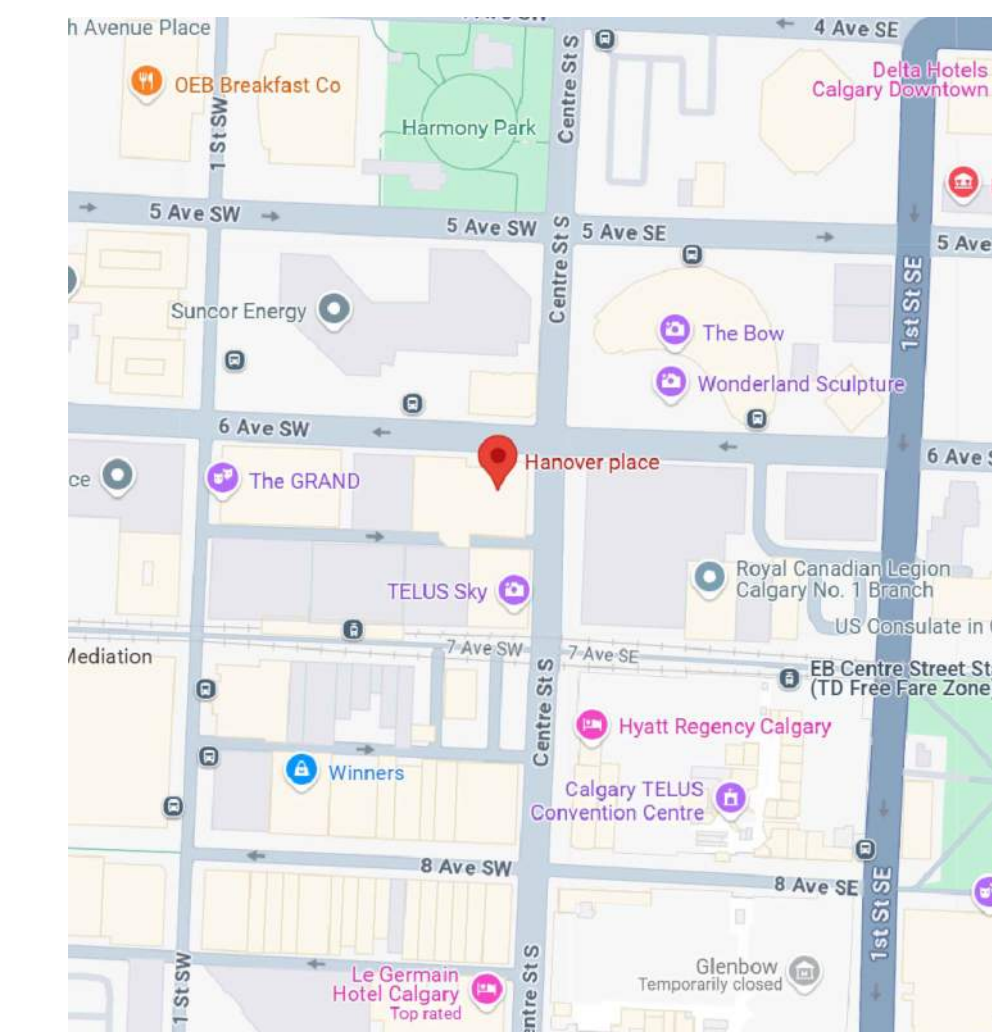
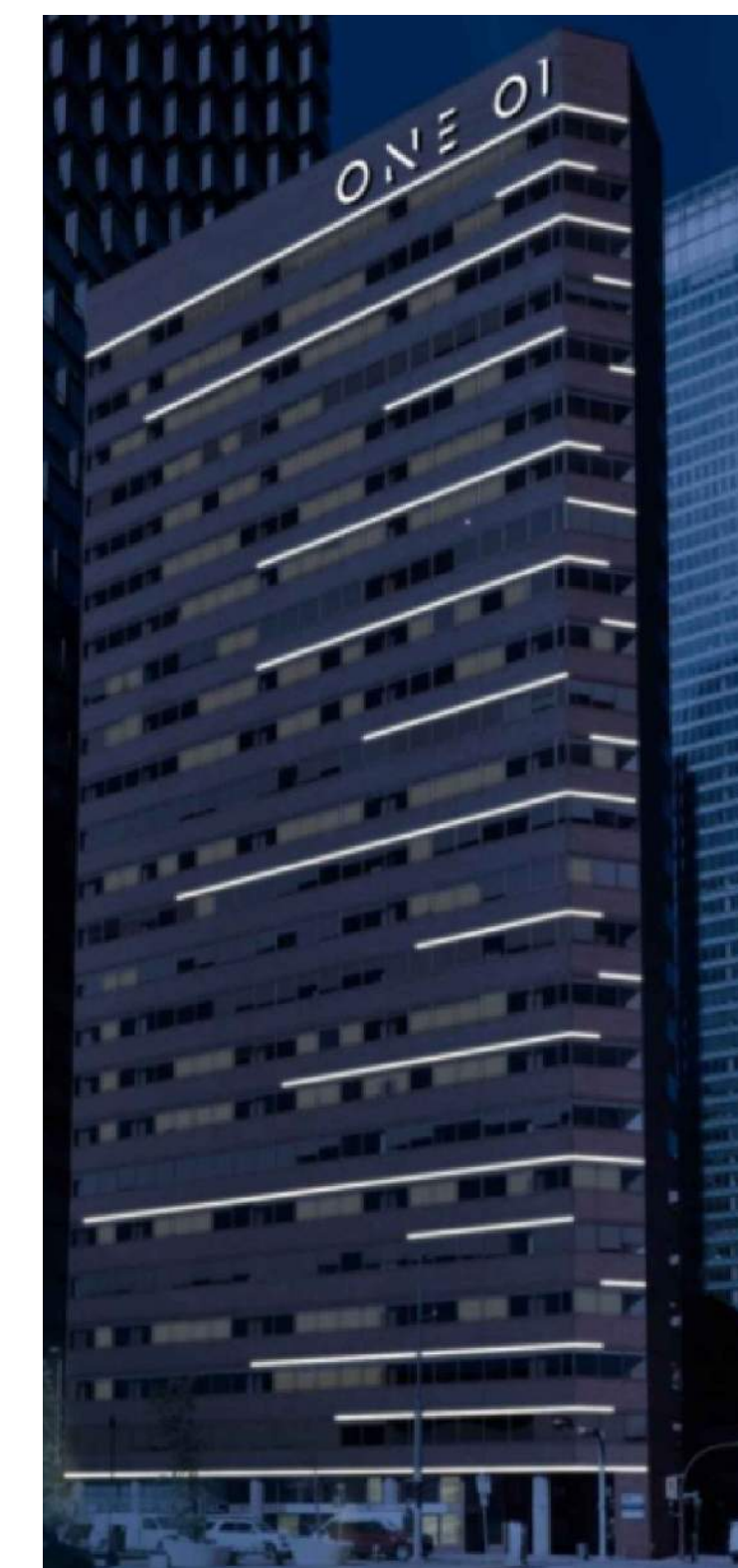
NOTE: MOUNTING IS INDICATED FROM FINISHED FLOOR TO CENTER OF DEVICE. MOUNTING HEIGHTS INDICATED ON DRAWINGS OR SPECIFICATIONS HAVE PRECEDENCE OVER THIS LEGEND. ANY UNLISTED MOUNTING HEIGHTS TO BE CONFIRMED PRIOR TO INSTALLATION.

NOTE: APPROVED ALTERNATIVE MANUFACTURERS MAY BE ACCEPTED.

CRITICAL SITE REVIEW	
THE FOLLOWING IS A LIST OF 'CRITICAL SITE REVIEWS' THAT SHALL BE PERFORMED BY EMBE CONSULTING. THE GENERAL CONTRACTOR SHOULD NOTIFY THIS CONSULTANT A MINIMUM OF 3 WORKING DAYS (5 WORKING DAYS FOR PROJECTS OUTSIDE OF MAIN OFFICE LOCATION) IN ADVANCE OF DATE OF REQUIRED SITE REVIEW.	
1.	POST DEMOLITION - WHEN EXISTING ELECTRICAL DISTRIBUTION EQUIPMENT IS EXPOSED.
2.	BELOW GRADE CONDUIT SYSTEMS (INSIDE BUILDING) - WHEN CONDUIT SYSTEMS ARE COMPLETELY INSTALLED BUT BEFORE BACKFILLING HAS BEEN STARTED.
3.	ABOVE SLAB LIGHTING, POWER, AUXILIARY - WHEN ALL LIGHTING, POWER & AUXILIARY HAVE BEEN ROUGHED-IN BUT BEFORE ANY DRYWALL OR WALL INSULATION HAS BEEN STARTED. ANY ELECTRICAL THAT WILL BE HIDDEN AT TIME OF SUBSTANTIAL COMPLETION SHOULD BE COMPLETED FOR REVIEW AT THIS TIME.
4.	SUBSTANTIAL COMPLETION - WHEN ALL ELECTRICAL, LIGHTING, POWER & AUXILIARY SYSTEMS ARE SUBSTANTIALLY COMPLETE AND OPERATIONAL.
5.	FIRE ALARM SYSTEM - FULLY INSTALLED AND VERIFICATION TO BE WITNESSED BY EMBE ALONG WITH FIRE ALARM TECHNICIAN (FOR ALBERTA PROJECTS).
6.	INTEGRATED SYSTEM TESTING WHERE APPLICABLE - ALL LIFE SAFETY ITEMS INTEGRATED WITH MECHANICAL TO BE TESTED IN PRESENT OF EMBE REPRESENTATIVE.
REMEMBER: BEFORE YOU CALL THE CITY FOR AN INSPECTION, CONTACT EMBE CONSULTING FOR A SITE REVIEW. CLIENTS TO REVIEW THEIR INDIVIDUAL PROPOSAL FOR SITE VISITS INCLUDED.	

ELECTRICAL SHEET LIST	
SHEET NUMBER	SHEET NAME
E000	ELECTRICAL COVER PAGE
E101	ELECTRICAL SITE PLAN
E102	ELEVATION
E103	RENDERING
E104	RENDERING

PROJECT CONTACTS	
ELECTRICAL	
PROJECT MANAGER:	DRAUPADI KARADIA E-MAIL: dkaradia@embeconsulting.ca
DESIGNER/DRAFTER:	DAVID OLOWO E-MAIL: dollowo@embeconsulting.ca



01 KEY PLAN
E00 SCALE: N.T.S.

CLIENT	101 RESIDENTIAL LIMITED PARTNERSHIP
PROJECT	HANOVER PLACE CONVERSION
TITLE	ELECTRICAL COVER PAGE
PROJECT NUMBER	25234
DRAWING NUMBER	E000
DRAWN/CHECKED	DO/TT

DO NOT SCALE DRAWINGS. THE CONTRACTOR SHALL CHECK AND VERIFY ALL DIMENSIONS AND REPORT ANY DISCREPANCIES BEFORE PROCEEDING WITH THE WORKS.

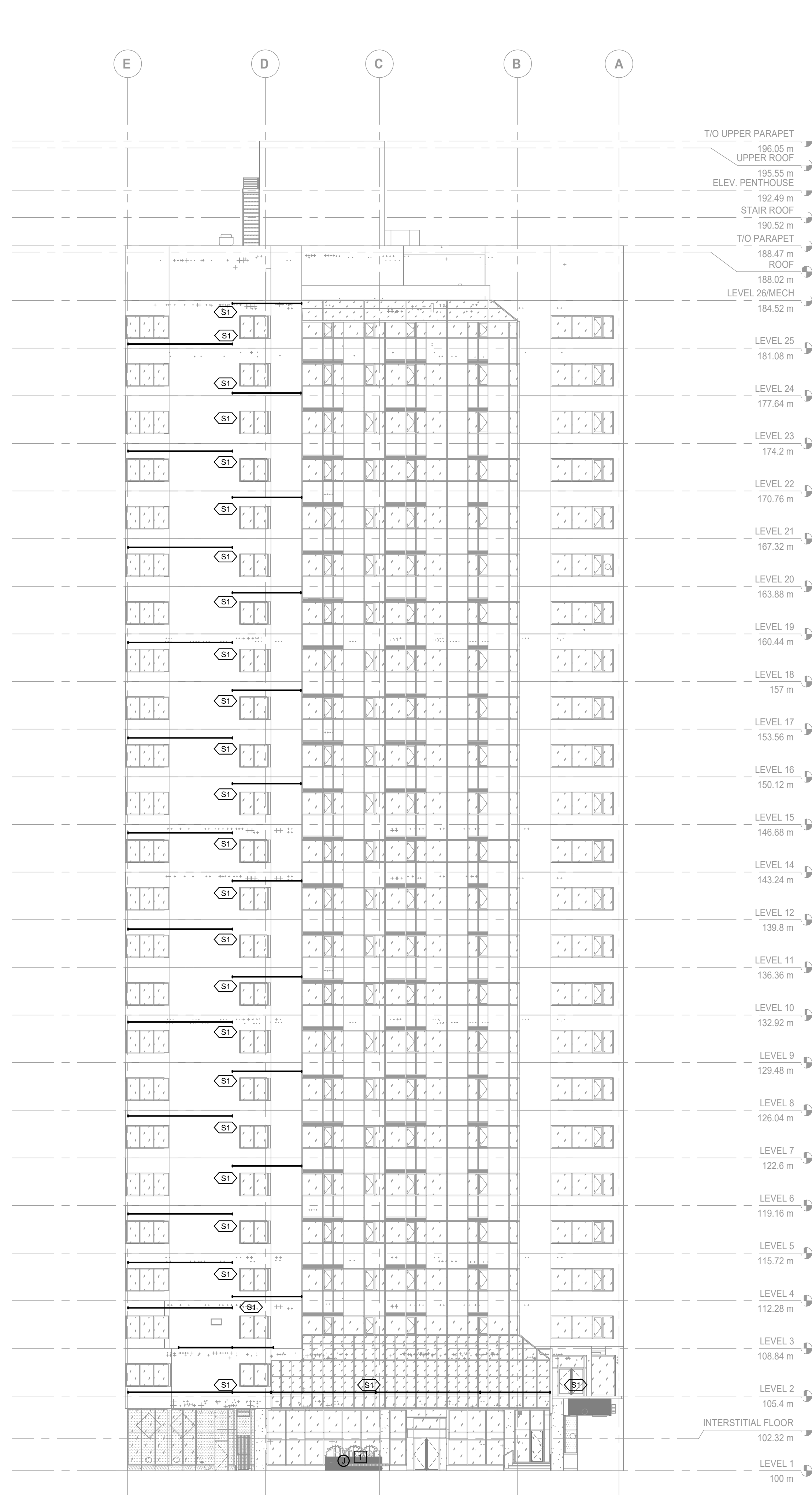
NO.	ISSUED	DATE
1.	ISSUED FOR DP	2025-07-17
2.	RE-ISSUED FOR DP	2025-02-25

GENERAL NOTES

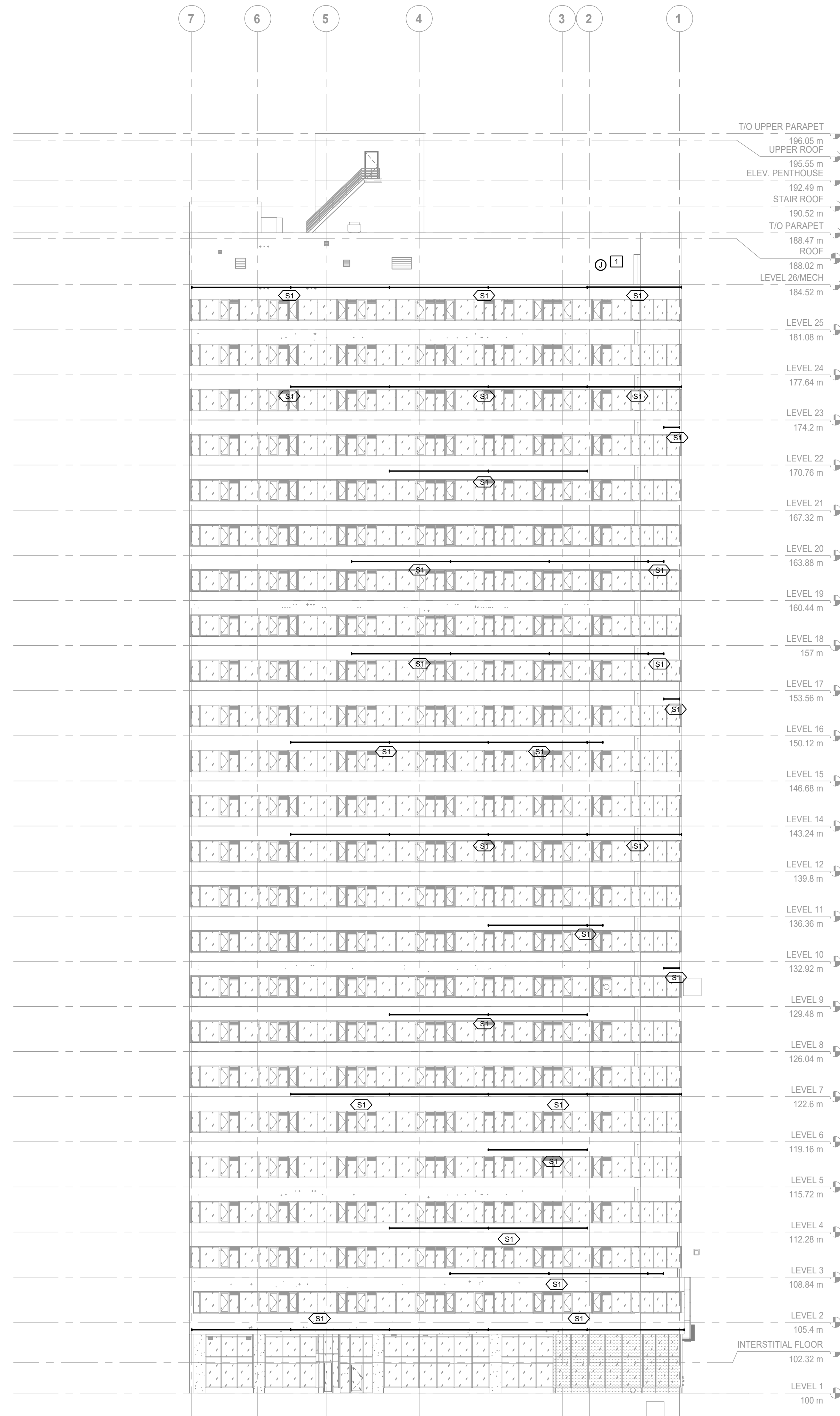
- ALL DRAWINGS TO BE READ IN CONJUNCTION WITH ARCHITECTURAL AND MECHANICAL DRAWINGS. WHERE DISCREPANCIES ARE FOUND, THEY SHOULD BE BROUGHT FORWARD PRIOR TO TENDER CLOSE.
- CONDUCTOR SIZES INDICATED IS MINIMUM REQUIRED. INCREASE CONDUCTOR SIZE (AND CONDUIT SIZE WHERE APPLICABLE) TO ACCOMMODATE VOLTAGE DROP PER CEC REQUIREMENTS.

NOTES

- 1 PROVIDE JUNCTION BOX FOR SIGNAGE.



01 NORTH ELEVATION
SCALE: 1:200



02 EAST ELEVATION
SCALE: 1:200

CLIENT

101 RESIDENTIAL LIMITED PARTNERSHIP

PROJECT

HANOVER PLACE CONVERSION

TITLE

ELEVATION

PROJECT NUMBER DRAWING NUMBER

25234

DRAWN/CHECKED DO/TT

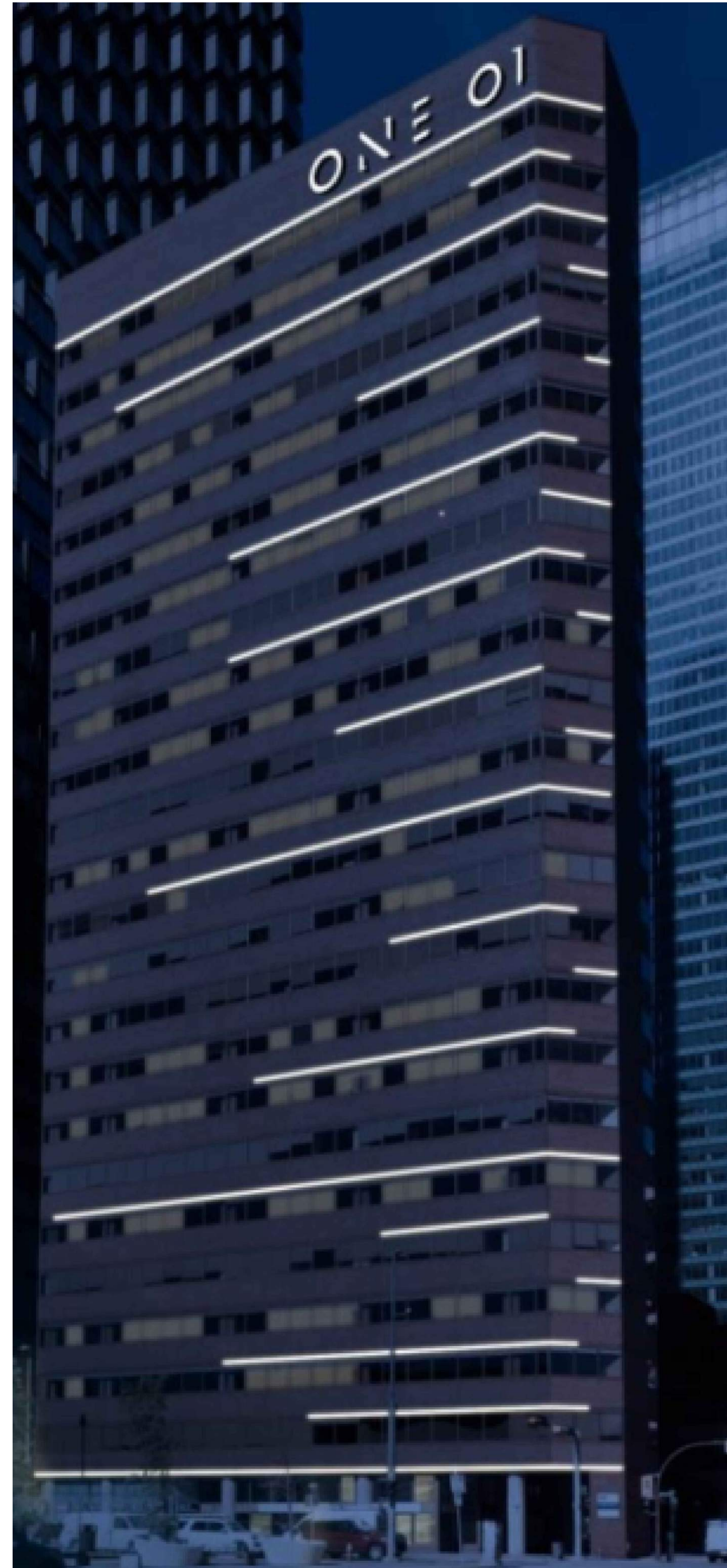
E102

DO NOT SCALE DRAWINGS. THE CONTRACTOR SHALL CHECK AND VERIFY ALL DIMENSIONS AND REPORT ANY DISCREPANCIES BEFORE PROCEEDING WITH THE WORKS

NO.	ISSUED	DATE
1.	ISSUED FOR DP	2025-07-17
2.	RE-ISSUED FOR DP	2025-02-25



01 RENDERING 1
SCALE: N.T.S.
E103



02 RENDERING 2
SCALE: N.T.S.
E103

CLIENT

101 RESIDENTIAL LIMITED PARTNERSHIP

PROJECT

HANOVER PLACE CONVERSION

TITLE

RENDERING

PROJECT NUMBER DRAWING NUMBER

25234

DRAWN/CHECKED

DO/TT

E103



01 RENDERING 3
E104 SCALE N.T.S

DO NOT SCALE DRAWINGS. THE CONTRACTOR SHALL CHECK AND VERIFY ALL DIMENSIONS AND REPORT ANY DISCREPANCIES BEFORE PROCEEDING WITH THE WORKS

NO.	ISSUED	DATE
1.	ISSUED FOR DP	2025-07-17
2.	RE-ISSUED FOR DP	2025-02-25

CLIENT

101 RESIDENTIAL LIMITED PARTNERSHIP

PROJECT

HANOVER PLACE CONVERSION

TITLE

RENDERING

PROJECT NUMBER DRAWING NUMBER

25234

DRAWN/CHECKED DO/TT **E104**