



ARTIST RENDERING. FOR REFERENCE ONLY.

# NORR

2300, 411 – 1st Street SE  
Calgary, AB, Canada T2G 4Y5  
norr.com

NORR Architects Engineers Planners  
A Partnership of Corporations  
Poon McKenzie Architects (Alberta) Inc. Poon McKenzie Holdings Inc.

Jonathan Hughes, Architect, AAA, OAA, AIBC, MAA, AANB, AAPE  
Adrian Todella, P.Eng., APEGA  
Chris Pal, P.Eng., APEGA

**AMENDED DRAWINGS**  
DP No      Date Received  
DP2025-05095      06 17 2026  
**THESE DRAWINGS REFER TO THE ABOVE DEVELOPMENT PERMIT NO.**

# WESTBROOK MULTI

**3308/3312/3316/3320 - 14TH AVENUE S.W.  
1445 - 32ND STREET S.W. CALGARY, ALBERTA**

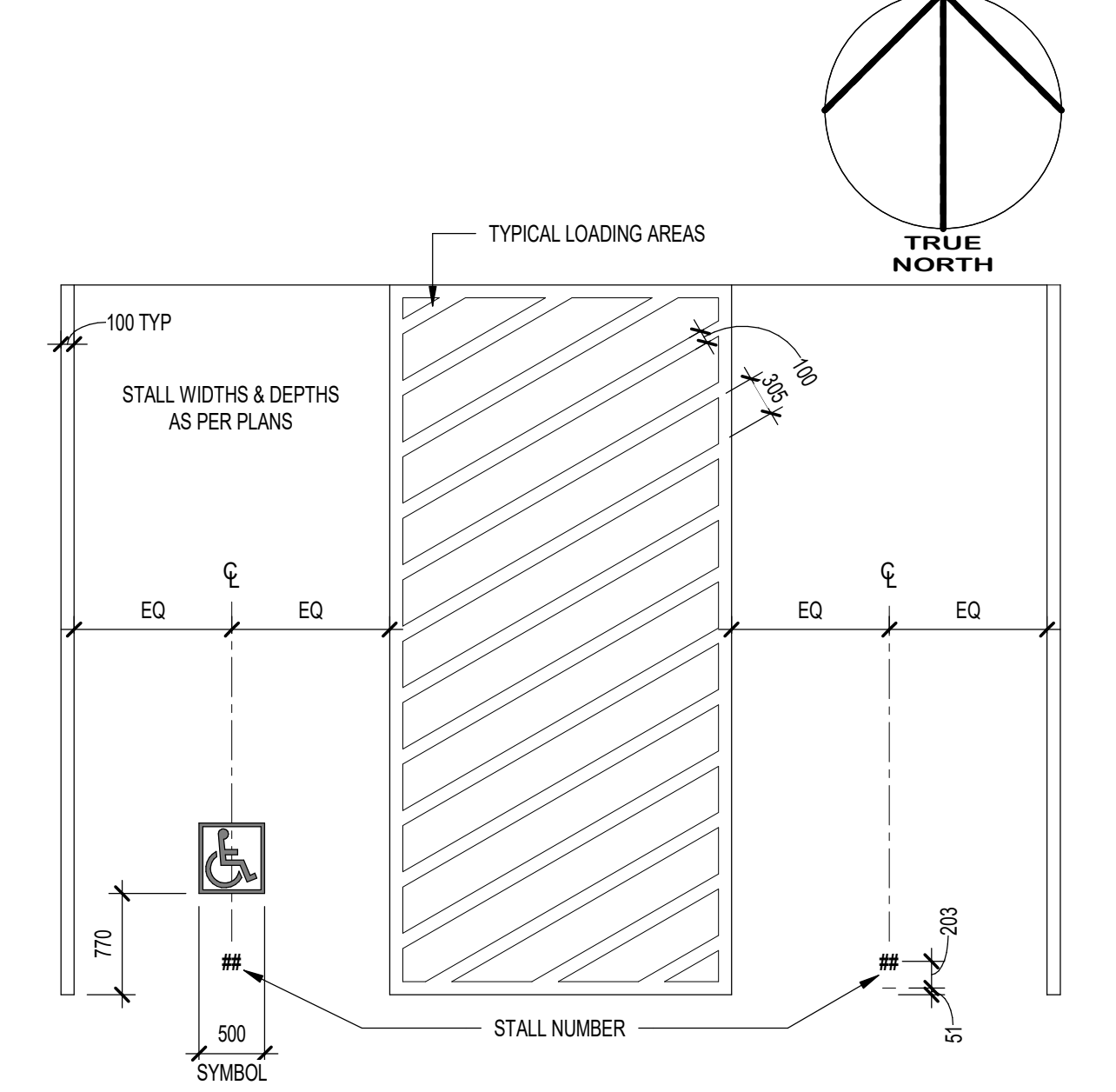
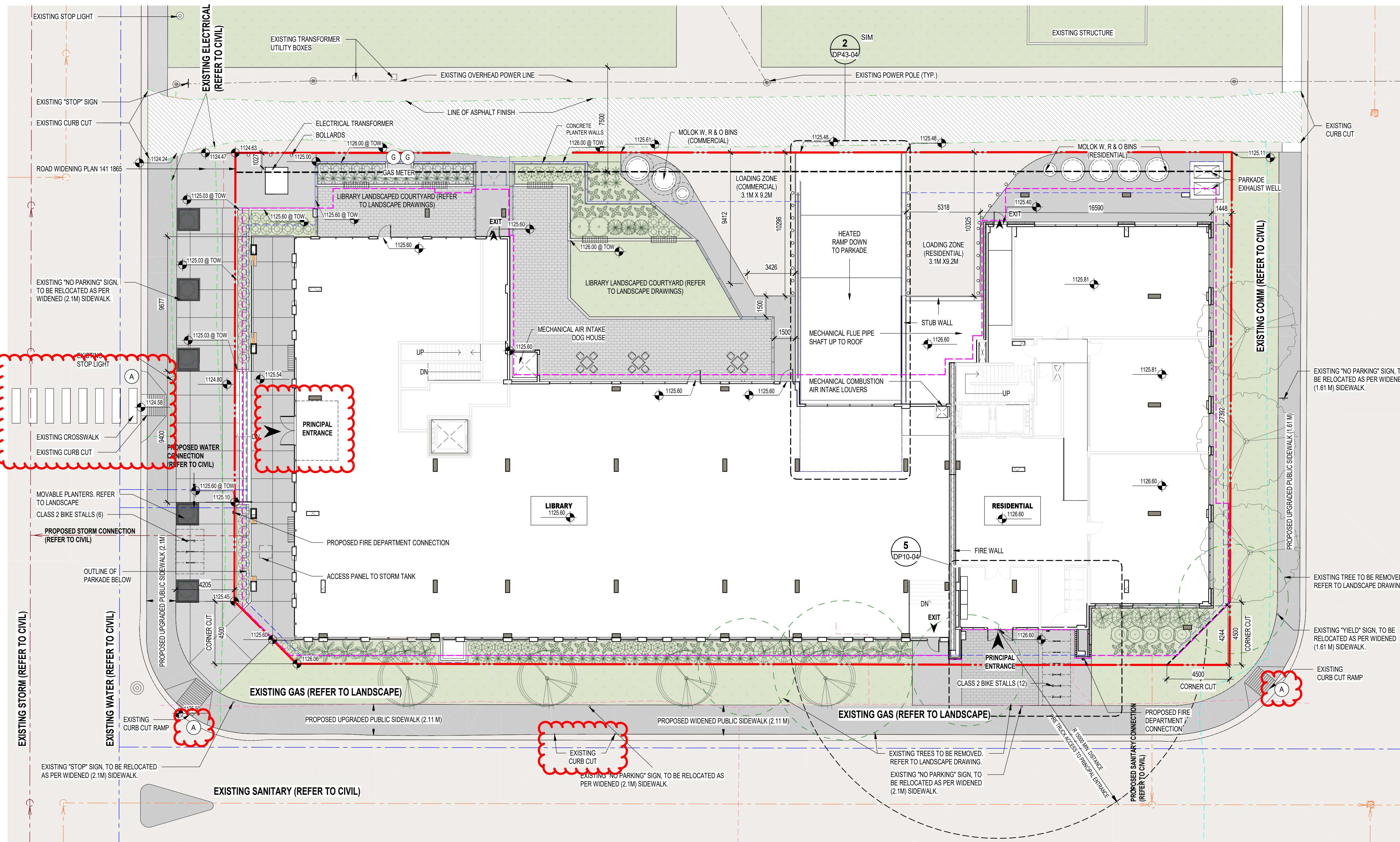
DEVELOPMENT PERMIT: DEVELOPMENT PERMIT NO. 2025-05095  
NORR PROJECT NUMBER: RZ1125-0089



**ISSUED FOR DR 2 RESPONSE - 22 APRIL, 2026**

SURVEY	CIVIL	ARCHITECTURE	STRUCTURAL
<b>VISTA GEOMATICS LTD.</b> BAY 1, 2135 32ND AVE NE CALGARY, ALBERTA, T2E 6Z3 403 270 4048	<b>JUBILEE ENGINEERING CONSULTANTS</b> 3702 EDMONTON TRAIL NE CALGARY, ALBERTA, T2E 3P4 403 276 1001	<b>NORR ARCHITECTS ENGINEERS PLANNERS</b> #2300, 411 1 ST SE CALGARY, ALBERTA, T2G 4Y5 403 264 4000	<b>WOLSEY STRUCTURAL ENGINEERING</b> #200, 1302 4 ST SW CALGARY, ALBERTA, T2R 0X8 403 452 4711
MECHANICAL	ELECTRICAL	INTERIORS	LANDSCAPE
<b>TLJ ENGINEERING</b> 301, 301 14TH ST NW CALGARY, ALBERTA, T2N 2A1 825 609 6848	<b>TLJ ENGINEERING</b> 301, 301 14TH ST NW CALGARY, ALBERTA, T2N 2A1 825 609 6848	- ADDRESS CITY, PROVINCE, POSTAL CODE PHONE NUMBER	<b>GROUND CUBED LANDSCAPE ARCHITECTS</b> #25, 6020 2 STREET SE CALGARY, ALBERTA, T2H 2L8 403 475 0719

2026-04-21 11:18



**9 BARRIER FREE STALL**  
 DP10-02 SCALE: 1:50

**SITE PLAN NOTES**

- REFER TO LANDSCAPE PLANS FOR EXISTING AND PROPOSED TREES, SIDEWALKS, WALKWAYS AND FEATURES AND DETAILS.
- REFER TO ELECTRICAL DRAWINGS FOR PROPOSED SITE LIGHTING.
- NO SURFACE PARKING (VISITORS INCLUDED) SHALL EXCEED 4% SLOPE IN ANY DIRECTION.
- INSTALL REGULAR ASPHALT AT PARKING STALL LOCATIONS, HEAVY DUTY ASPHALT WHERE INDICATED.
- WHEEL STOPS TO BE 100mm HIGH AND PLACED 600mm FROM FRONT OF PARKING STALL (TYP.).
- ARROWS SHOWN ON ASPHALT INDICATE DIRECTION OF TRAVEL.
- ALL INFORMATION ABOUT SITE SERVICES, GRADING, PEDESTALS, CONDUIT, UTILITY RIGHT OF WAY - REFER TO CIVIL DRAWINGS FOR ADDITIONAL DETAILS. GRADING IS FOR REFERENCE ONLY ON ARCH DRAWINGS.
- CAST-IN-PLACE EXTERIOR CONCRETE RISERS IN WALKWAYS TO BE COMPLETED BY SITE CONTRACTOR. RISERS SHOWN ARE ESTIMATED BASED ON GRADES. ALL RISER COUNTS AND LOCATIONS TO BE CONFIRMED - REFER TO CIVIL.
- ALL BUILT ELEMENTS WITHIN THE PROPERTY LINE ARE PROPOSED UNLESS NOTED OTHERWISE. NO PARKING ANYTIME/FIRE LANE SIGNAGE TO BE POSTED ON ALL INTERNAL ROADS LESS THAN 8.5m.
- FIRE ACCESS ROUTE - HEAVY DUTY ASPHALT CAPABLE OF SUPPORTING MN. 38,556kg (85,000lbs) LOAD & NFPA 1901-POINT LOAD OF 517kPa OVER 2422" AREA.

**A. WHEELCHAIR RAMP - WILL BE REPLACED AS PER ROADS STANDARD SPECIFICATION, FIGURE 42, FILE NO. 454.1013.001**

DATE	ISSUED FOR	REV
2025-08-29	DEVELOPMENT PERMIT	A
2026-01-30	DEVELOPMENT PERMIT-DR1	B
2026-04-22	DEVELOPMENT PERMIT-DR2	C



This drawing has been prepared solely for the use of TRUMAN and there are no representations of any kind made by NORR ARCHITECTS ENGINEERS PLANNERS to any party with whom NORR ARCHITECTS ENGINEERS PLANNERS has not entered into a contract.

This drawing shall not be used for construction purposes until the seal appearing hereon is signed and dated by the Architect or Engineer.

Project Component  
**DEVELOPMENT PERMIT**

Key Plan

Consultants

Survey:	VISTA GEOMATICS LTD.
Civil:	JUBILEE ENGINEERING CONSULTANTS
Architecture:	NORR ARCHITECTS ENGINEERS PLANNERS
Structural:	WOLSEY STRUCTURAL ENGINEERING
Mechanical:	TLJ ENGINEERING
Electrical:	TLJ ENGINEERING
Interiors:	TLJ ENGINEERING
Landscape:	GROUND CUBED LANDSCAPE ARCHITECTS

Seal(s)



2300, 411 - 1st Street SE  
 Calgary, AB, Canada T2G 4Y5  
 norr.com

NORR Architects Engineers Planners  
 A Partnership of Corporations

Jonathan Hughes, Architect: AAA, OAA, ABC, MAA, AANB, AAPE  
 Adam Toles, P.Eng., ARE/CA  
 Chris Hill, P.Eng., ARE/CA

Project Manager	J.JAIN	Drawn	Author
Project Leader	M.SALAS	Checked	Checker

Client  
**TRUMAN**

#2236, 10 ASPEN STONE BOULEVARD SE CALGARY, ALBERTA

Project  
**WESTBROOK MULTI**

3308/3312/3316/3320 - 14TH AVENUE S.W.  
 1445 - 32ND STREET S.W. CALGARY, ALBERTA

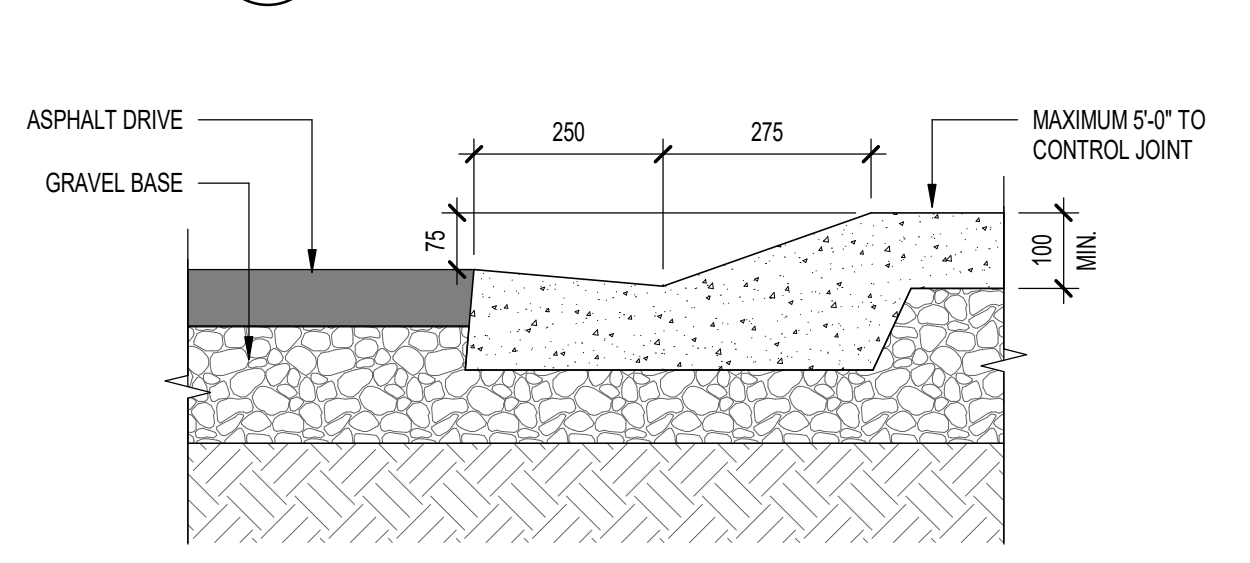
Drawing Title  
**OVERALL SITE PLAN**

Scale  
 As indicated

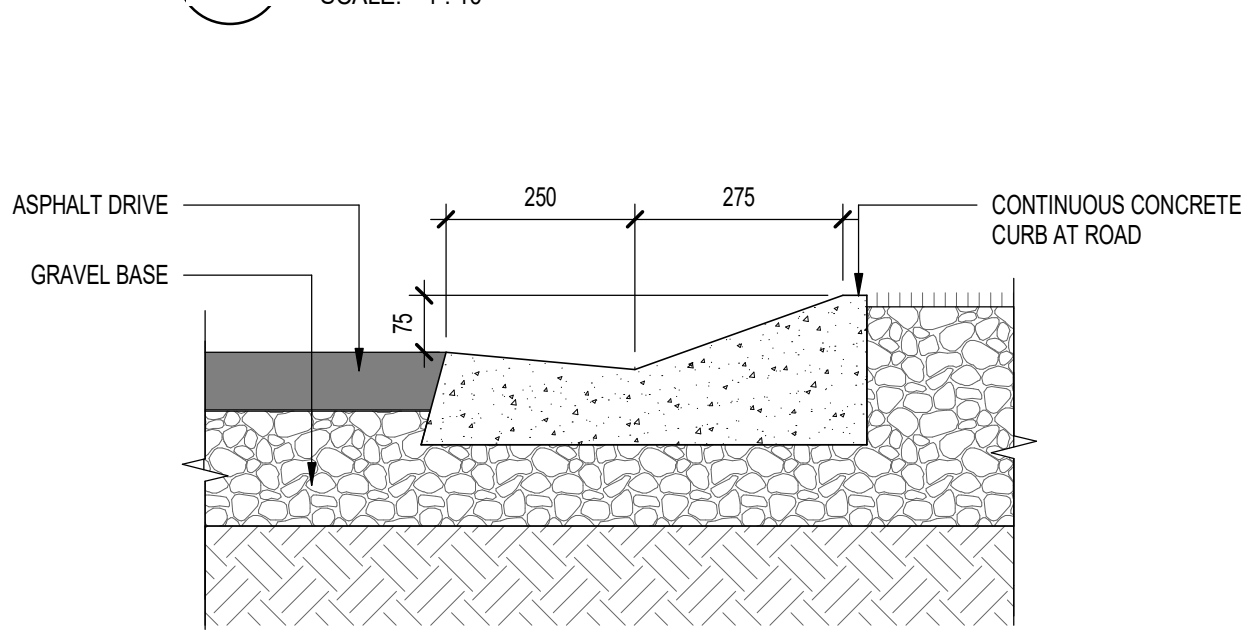
Project No.  
 RZ1125-0089

Drawing No.  
**DP10-02**

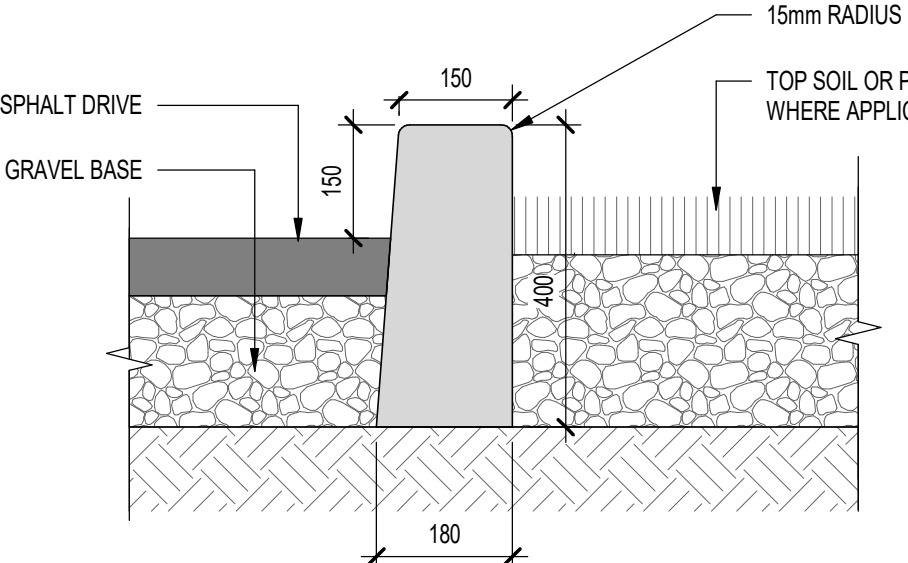
**1 SITE PLAN**  
 DP10-02 SCALE: 1:150



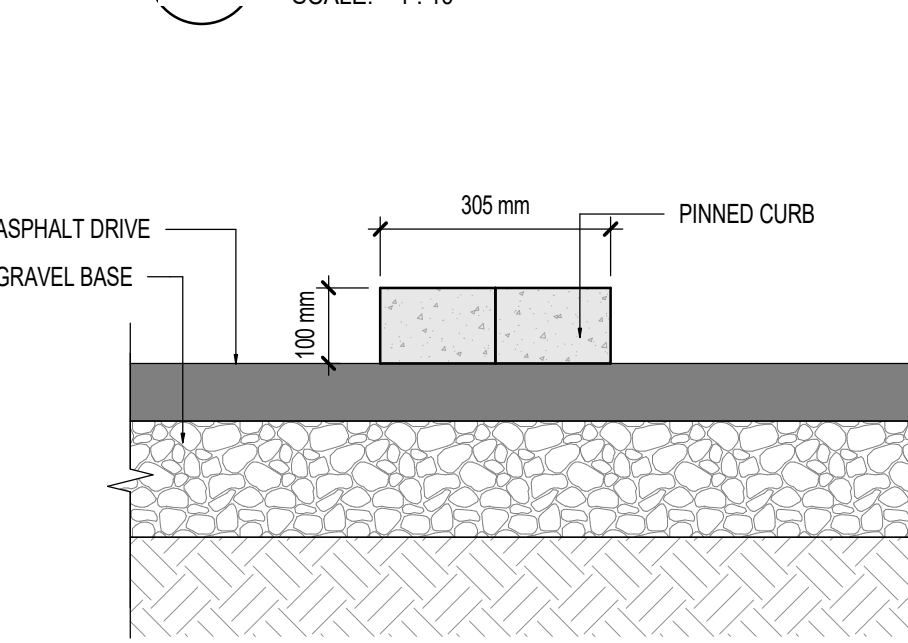
**3 ROLLED CURB SIDEWALK DETAIL**  
 DP10-02 SCALE: 1:10



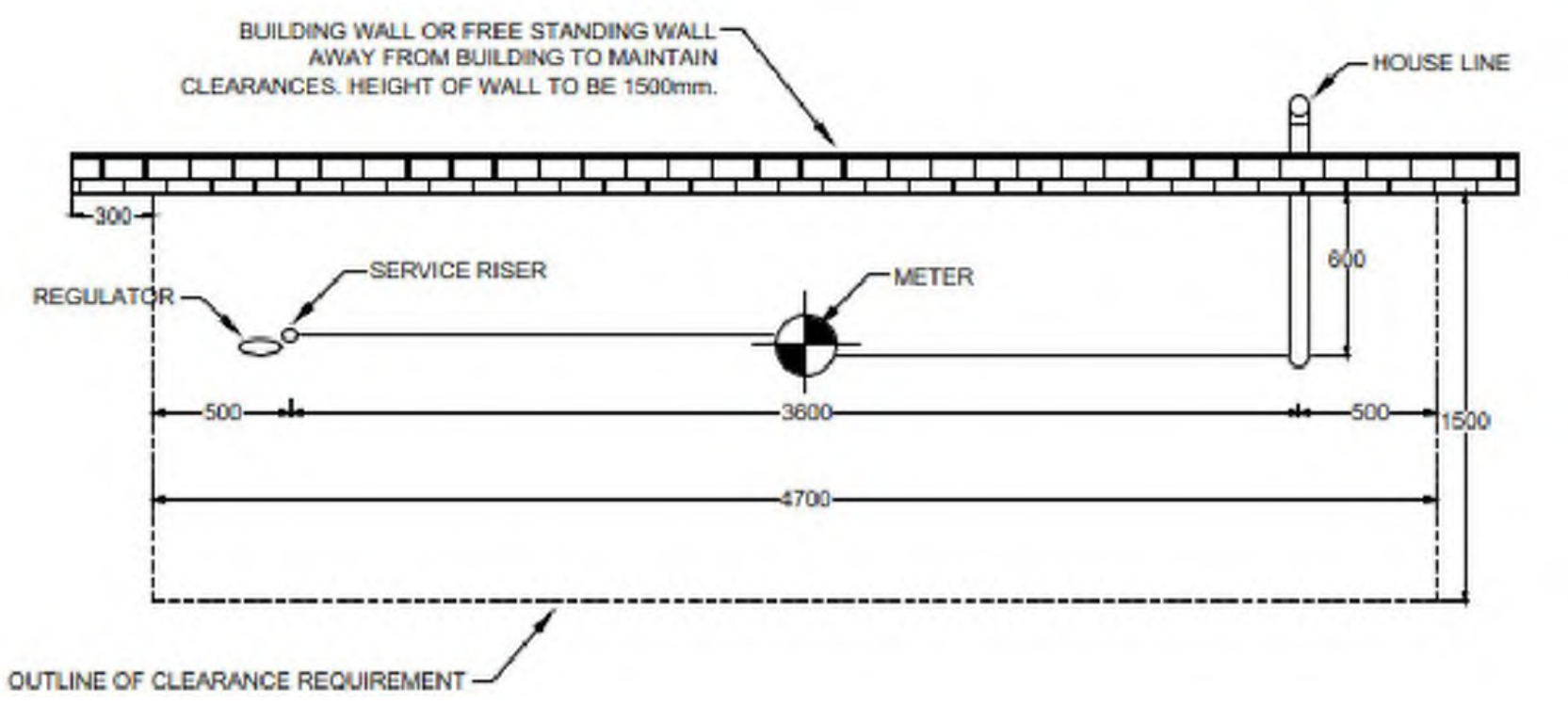
**2 ROLLED CURB LANDSCAPE DETAIL**  
 DP10-02 SCALE: 1:10



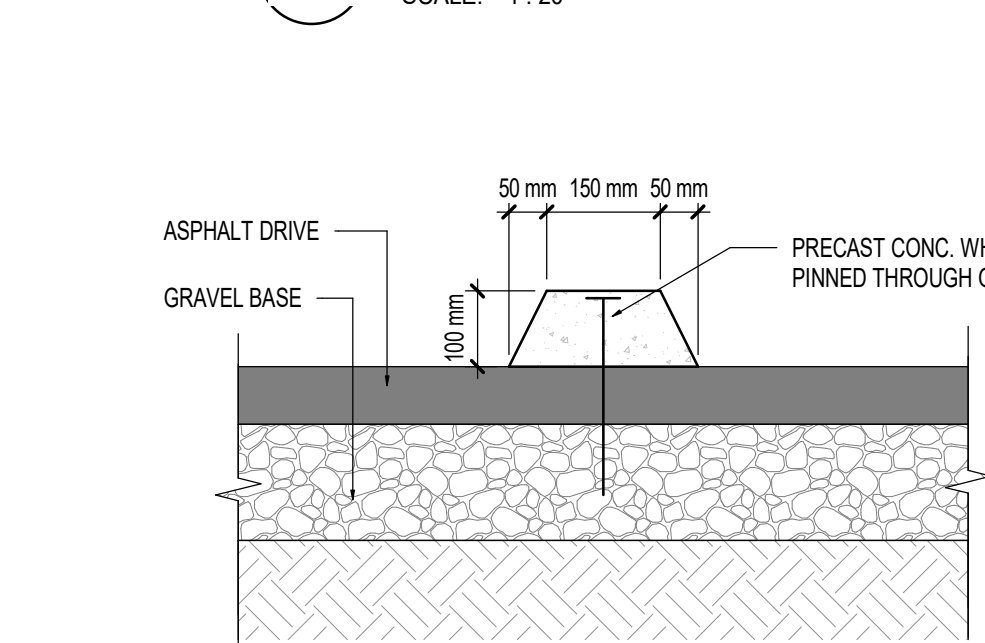
**5 CURB WALL DETAIL**  
 DP10-02 SCALE: 1:10



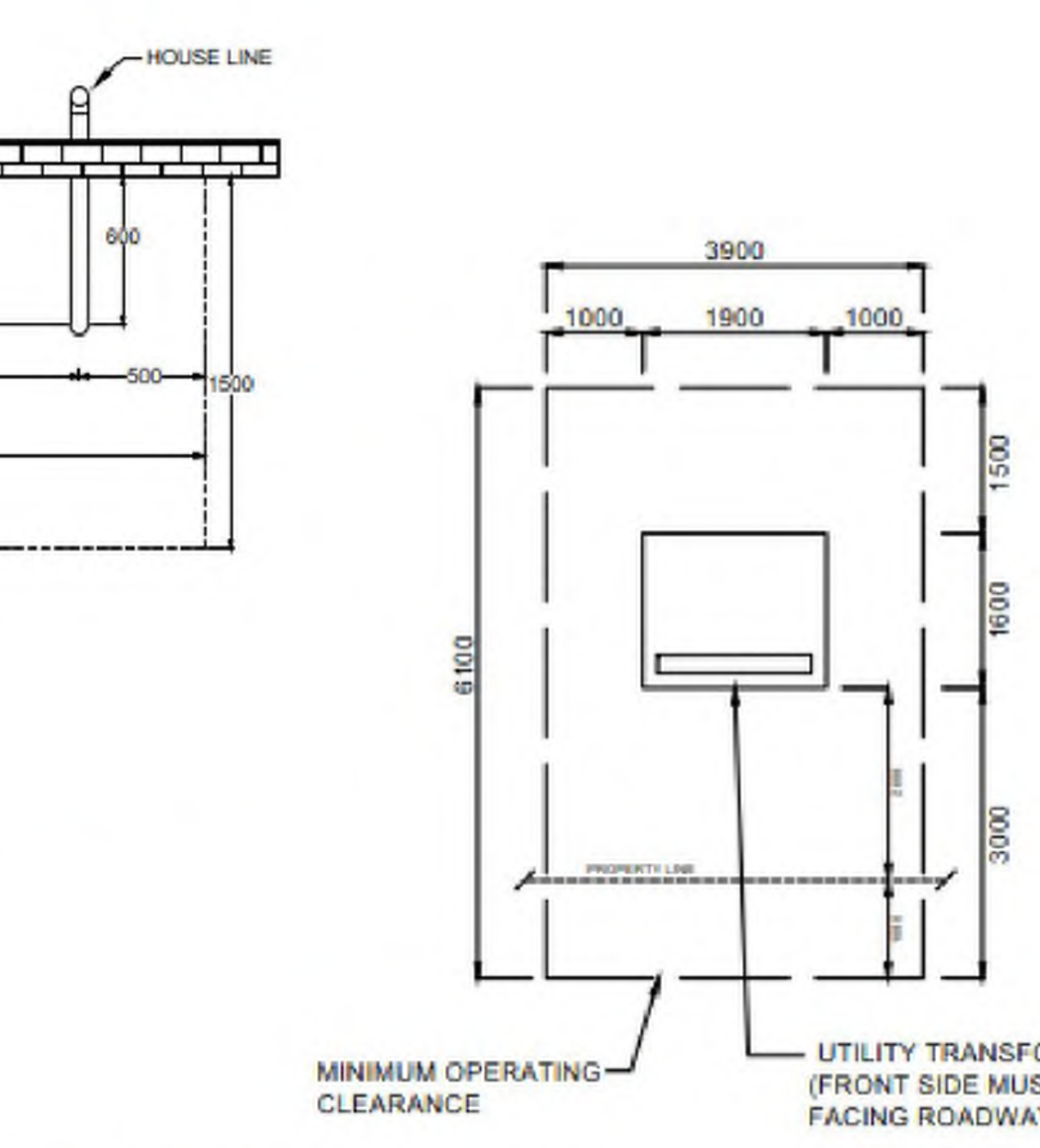
**4 PINNED CURB DETAIL**  
 DP10-02 SCALE: 1:10



**7 GAS METER**  
 DP10-02 SCALE: 1:20



**6 WHEEL STOP DETAIL**  
 DP10-02 SCALE: 1:10



**8 TRANSFORMER CLEARANCE**  
 DP10-02 SCALE: 1:50

NOTE: ALL DIMENSIONS ARE IN MILLIMETERS.

- AREA BELOW CLEARANCE BOUNDARY AROUND PAD MOUNT TRANSFORMER TO BE NATIVE SOIL. TRANSFORMER PAD OR CLEARANCE AROUND PAD CANNOT BE LOCATED OVER A BASEMENT LEVEL OR PARKADE.
- CLEARANCE ABOVE TRANSFORMER TO BE NO LESS THAN 1METERS TO ALLOW FOR REMOVAL OF TRANSFORMER.
- TRANSFORMER MUST BE MINIMUM 3 METERS AWAY FROM ANY COMBUSTIBLE MATERIAL OR METALLIC OBJECT ON OR AROUND THE BUILDING.
- TRANSFORMER MUST BE MINIMUM 2 METERS AWAY FROM DRIVEABLE SURFACE SUCH AS ROADWAYS, LANE WAYS AND PARKING STALLS.

**SITE LEGEND**

	PROPERTY LINE - DELINEATES SCOPE OF WORK
	PROPERTY SETBACK LINE
	EXTENTS OF PARKADE WALLS BELOW GRADE
	OUTLINE OF BUILDING ABOVE
	SERVICE - STORM
	SERVICE - SANITARY
	SERVICE - WATER
	UTILITY RIGHT OF WAY (UROW) - REFER TO CIVIL
	HEAVY DUTY ASPHALT
	SOFT LANDSCAPE (REFER TO LANDSCAPE DRAWING)
	PLANTER (REFER TO LANDSCAPE DRAWING)
	BOULEVARD LANDSCAPE (SHOWN FOR REFERENCE ONLY. REFER TO LANDSCAPE DRAWINGS)
	CONCRETE PAVING / WALKWAY
	PRINCIPAL ENTRANCE
	B.F. BARRIER FREE PARKING SIGNAGE/SYMBOL
	RESIDENT PARKING SIGNAGE
	VISITOR PARKING SIGNAGE
	E.V. READY STALL. E.V. SUPPLY EQUIPMENT (EVSE) INSTALLATION TO SUPPORT LEVEL 2 ELECTRIC VEHICLE.
	E.V. CAPABLE STALL (INCLUDES ELECTRICAL CAPACITY & DISTRIBUTION PANELS, WALL & FLOOR PENETRATION TO ACCOMMODATE FUTURE CHARGING CABLES & MAY INCLUDE E.V. ENERGY MANAGEMENT SYSTEM FOR FUTURE.
	ELECTRICAL METER
	ELECTRIC VEHICLE CHARGER (SERVES 2 STALLS)
	FIRE DEPARTMENT CONNECTION
	GAS METER
	LOADING ZONE
	WATER METER
	NO PARKING
	TRANSFORMER
	FIRE HYDRANT
	CATCH BASIN
	MANHOLE
	DIRECTION OF TRAVEL
	EXISTING POWERPOLE
	EXISTING POWERPOLE TO BE REMOVED, SERVICE DISCONNECTED

A:\book\Draw\Westbrook\_Multi\DP10\_02\_Overall\_Site\_Plan.dwg, AR, RZ1125-0089



DATE	ISSUED FOR	REV
2025-08-29	DEVELOPMENT PERMIT	A
2026-01-30	DEVELOPMENT PERMIT-DR1	B
2026-04-22	DEVELOPMENT PERMIT-DR2	C



This drawing has been prepared solely for the use of TRUMAN and there are no representations of any kind made by NORR ARCHITECTS ENGINEERS PLANNERS to any party with whom NORR ARCHITECTS ENGINEERS PLANNERS has not entered into a contract.

This drawing shall not be used for construction purposes until the seal appearing hereon is signed and dated by the Architect or Engineer.

Project Component  
 DEVELOPMENT PERMIT

Key Plan

- Consultants
- Survey: VISTA GEOMATICS LTD.
  - Civil: JUBILEE ENGINEERING CONSULTANTS
  - Architecture: NORR ARCHITECTS ENGINEERS PLANNERS
  - Structural: WOLSEY STRUCTURAL ENGINEERING
  - Mechanical: TLJ ENGINEERING
  - Electrical: TLJ ENGINEERING
  - Interiors: TLJ ENGINEERING
  - Landscape: GROUND CUBED LANDSCAPE ARCHITECTS

Seal(s)

**NORR**

2300, 411 – 1st Street SE  
 Calgary, AB, Canada T2G 4Y5  
 norr.com

NORR Architects Engineers Planners  
 A Partnership of Corporations  
 (Part of NORR Architects Engineers Planners Inc. (NORR Architects Engineers Planners Inc.))

Jonathan Hughes, Architect: AAA, OAA, AAC, ABC, SAA, AANB, AAPF  
 Adam Toleda, P. Eng. ARE/CA  
 Chris P. P. Eng. ARE/CA

Project Manager T.JAIN	Drawn Author
Project Leader M.SALAS	Checked Checker

Client  
**TRUMAN**

#2236, 10 ASPEN STONE BOULEVARD SE CALGARY, ALBERTA  
 Project  
**WESTBROOK MULTI**

3308/3312/3316/3320 - 14TH AVENUE S.W.  
 1445 - 32ND STREET S.W. CALGARY, ALBERTA





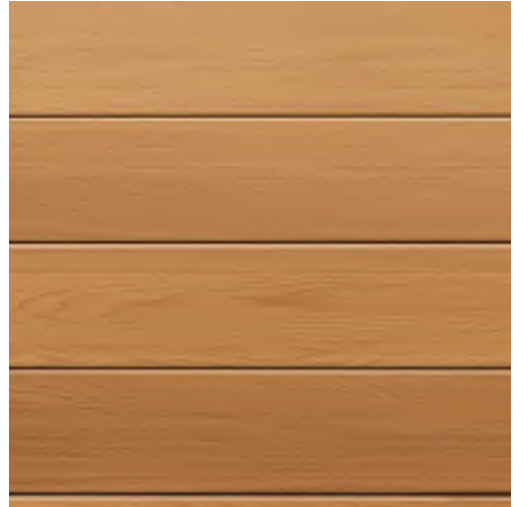

Drawing Title  
**3D RENDERINGS  
 MATERIALS & FINISHES**

Scale  
 1 : 1

Project No.  
 R71125-0088

Drawing No.  
**DP10-05**

**MATERIAL BOARD**

	MATERIAL: FULL BRICK MASONRY MANUFACTURER: IXL BRICK OR EQUAL COLOR: COAL		MATERIAL: FIBER CEMENT VERTICAL - BOARD & BATTEN SIDING (SMOOTH) MANUFACTURER: JAMES HARDIE OR EQUAL COLOR: ARCTIC WHITE		MATERIAL: METAL PANEL MANUFACTURER: TBD COLOR: CHARCOAL
	MATERIAL: FIBER CEMENT VERTICAL - BOARD & BATTEN SIDING (SMOOTH) MANUFACTURER: JAMES HARDIE OR EQUAL COLOR: DARK GRAY		MATERIAL: METAL SIDING - V GROOVE PLANK SIDING MANUFACTURER: LUX ARCHITECTURAL PRODUCT OR EQUAL COLOR: HEMLOCK		MATERIAL: METAL SIDING MANUFACTURER: LUX ARCHITECTURAL PRODUCT OR EQUAL COLOR: HEMLOCK

DATE	ISSUED FOR	REV
2025-08-29	DEVELOPMENT PERMIT	A
2025-01-30	DEVELOPMENT PERMIT-DR1	B
2025-04-22	DEVELOPMENT PERMIT-DR2	C



This drawing has been prepared solely for the use of TRUMAN and there are no representations of any kind made by NORR ARCHITECTS ENGINEERS PLANNERS to any party with whom NORR ARCHITECTS ENGINEERS PLANNERS has not entered into a contract.

This drawing shall not be used for construction purposes until the seal appearing hereon is signed and dated by the Architect or Engineer.

Project Component  
**DEVELOPMENT PERMIT**  
 Key Plan

Consultants  
 Survey: VISTA GEOMATICS LTD.  
 Civil: JUBILEE ENGINEERING CONSULTANTS  
 Architecture: NORR ARCHITECTS ENGINEERS PLANNERS  
 Structural: WOLSEY STRUCTURAL ENGINEERING  
 Mechanical: TLJ ENGINEERING  
 Electrical: TLJ ENGINEERING  
 Interiors:  
 Landscape: GROUND CUBED LANDSCAPE ARCHITECTS

Seal(s)

2300, 411 - 1st Street SE  
 Calgary, AB, Canada T2G 4Y5  
 norr.com

NORR Architects Engineers Planners  
 A Partnership of Corporations  
 (Incorporated in Alberta, Canada)

Jonathan Hughes, Architect, AAA, OAA, ABC, SAA, AANB, AAPE  
 Adam Toleda, P. Eng., AREG  
 Chris Paul, P. Eng., AREG

Project Manager: T. JAIN  
 Project Leader: M. SALAS  
 Client: TRUMAN

#2236, 10 ASPEN STONE BOULEVARD SE CALGARY, ALBERTA

Project  
**WESTBROOK MULTI**

3308/3312/3316/3320 - 14TH AVENUE S.W.  
 1445 - 32ND STREET S.W. CALGARY, ALBERTA

Drawing Title  
**BUILDING EXTERIOR ELEVATIONS**

Scale: As indicated  
 Project No.: RZ1125-0089  
 Drawing No.: DP40-01



1 NORTH ELEVATION  
 SCALE: 1:100

MATERIAL LEGEND			GENERAL NOTES		
01	MATERIAL: FULL BRICK MASONRY MANUFACTURER: IXL BRICK OR EQUAL COLOR: COAL	08	MATERIAL: PRE-FINISHED ALUMINUM FLASHING COLOR: BLACK	15	MATERIAL: PVC PATIO DOOR COLOR: BLACK (FRAME) GLASS: CLEAR
02	MATERIAL: FIBER CEMENT VERTICAL - BOARD & BATTEN SIDING (SMOOTH) MANUFACTURER: JAMES HARDIE OR EQUAL COLOR: ARCTIC WHITE	09	MATERIAL: ALUMINUM GLAZED CURTAIN WALL SYSTEM COLOR: BLACK ANODIZED (FRAME) GLASS: CLEAR	16	MATERIAL: EXTERIOR INSULATED OVERHEAD DOOR COLOR: DARK GRAY
03	MATERIAL: FIBER CEMENT VERTICAL - BOARD & BATTEN SIDING (SMOOTH) MANUFACTURER: JAMES HARDIE OR EQUAL COLOR: DARK GRAY	10	MATERIAL: PRE-FINISHED METAL RAILING (PICKET) COLOR: BLACK	17	MATERIAL: EXTERIOR METAL DOOR & FRAME COLOR: TO MATCH ADJACENT WALL FINISH
04	MATERIAL: METAL SIDING - V GROVE PLANK SIDING MANUFACTURER: LUX ARCHITECTURAL PRODUCT OR EQUAL COLOR: HEMLOCK	11	MATERIAL: PRE-FINISHED METAL AND GLASS RAILING (POST) GLASS: CLEAR	18	MATERIAL: PAR-GING (SMOOTH FINISH CONCRETE FACE INSULATION) COLOR: GRAY
05	MATERIAL: CEMENT BOARD FASCIA (SMOOTH) MANUFACTURER: JAMES HARDIE OR EQUAL COLOR: ARCTIC WHITE	12	MATERIAL: BALCONY PRIVACY SCREEN COLOR: BLACK (POST & FRAME) GLASS: FROSTED	19	DECORATIVE COLOR CONCRETE FINISH COLOR: TO MATCH BRICK FINISH
06	MATERIAL: CEMENT BOARD FASCIA (SMOOTH) MANUFACTURER: JAMES HARDIE OR EQUAL COLOR: DARK GRAY	13	MATERIAL: METAL SLATS (NEO LUMBER SCREEN) MANUFACTURER: LUX ARCHITECTURAL PRODUCTS COLOR: HEMLOCK	20	MATERIAL: METAL LOUVER COLOR: PAINTED TO MATCH ADJACENT WALL FINISH
07	MATERIAL: CEMENT BOARD FASCIA (SMOOTH) MANUFACTURER: JAMES HARDIE OR EQUAL COLOR: BLACK	14	MATERIAL: METAL WINDOW COLOR: BLACK (PVC FRAME) GLASS: CLEAR - TRIPLE GLAZED	21	MATERIAL: EXTRUDED METAL SIGNAGE
				22	MATERIAL: SMOOTH CONCRETE FINISH COLOR: GRAY

- REFER TO CIVIL PLANS FOR U/G SERVICE CONNECTIONS. CONFIRM W/ MECHANICAL AND ELECTRICAL DRAWINGS.
- WALL FINISHES AT CORNERS AND BUMP-OUTS RETURN BACK TO BUILDING W/ IDENTICAL MATERIALS AND COLORS, UNLESS NOTED OTHERWISE ON FLOOR PLANS.
- ALL INFORMATION REGARDING SITE GRADING IS PROVIDED BY THE CIVIL ENGINEER AND IS SHOWN ON ARCHITECTURAL DRAWINGS FOR REFERENCE ONLY. IN THE CASE OF A DISCREPANCY, REFER TO APPROVED CIVIL DRAWINGS.
- PROVIDE PRE-FINISHED METAL FLASHING ABOVE / BELOW ALL OPENINGS AND AT ALL HORIZONTAL MATERIAL CHANGES. METAL FLASHING TO MATCH ADJACENT TRIM OR WALL FINISH COLOR WHERE APPLICABLE.
- PROVIDE BLOCKING AND SUBSTRATE AS REQUIRED FOR INSTALLATION AND AS RECOMMENDED BY MATERIAL MANUFACTURER.
- REFER TO CIVIL FOR NUMBER OF RISERS AT EXTERIOR WALKS AND STAIRS.
- COLORS AND MATERIALS SHOWN / SELECTED ARE FOR GENERAL REFERENCE ONLY. FINAL SELECTIONS ARE SUBJECT TO MANUFACTURER PRICING AND AVAILABILITY. MATCHING ALTERNATE MANUFACTURER COLOURS AND MATERIALS MAY BE USED IF APPROVED BY ARCHITECT AND OWNER PRIOR TO CONSTRUCTION.
- ALL WALL VENT / WALL GAP LOCATIONS ARE APPROXIMATE - REFER TO MECHANICAL COLOR TO MATCH ADJACENT EXTERIOR FINISH.
- ALL EXTERIOR FINISH MATERIALS ARE REQUIRED TO BE NON-COMBUSTIBLE AS PER NBC2023 AB, ED.
- REFER TO ELEC. PLANS FOR EXTERIOR AND PATIO/BALCONY LIGHTING.
- ALL RAILINGS TO BE TOP MOUNTED, DOUBLE TOP BAR SQUARE BAR PROFILE.
- ALL EXTERIOR GRILLS, VENTS & FLASHING COLOR TO MATCH ADJACENT MATERIAL.

DATE	ISSUED FOR	REV
2025-08-29	DEVELOPMENT PERMIT	A
2026-01-30	DEVELOPMENT PERMIT-DR1	B
2026-04-22	DEVELOPMENT PERMIT-DR2	C



1 SOUTH ELEVATION  
 SCALE: 1:100

**MATERIAL LEGEND**

01	MATERIAL: FULL BRICK MASONRY MANUFACTURER: IXL BRICK OR EQUAL COLOR: COAL	08	MATERIAL: PRE-FINISHED ALUMINUM FLASHING COLOR: BLACK	15	MATERIAL: PVC PATIO DOOR COLOR: BLACK (FRAME) GLASS: CLEAR
02	MATERIAL: FIBER CEMENT VERTICAL - BOARD & BATTEN SIDING (SMOOTH) MANUFACTURER: JAMES HARDIE OR EQUAL COLOR: ARCTIC WHITE	09	MATERIAL: ALUMINUM GLAZED CURTAIN WALL SYSTEM COLOR: BLACK ANODIZED (FRAME) GLASS: CLEAR	16	MATERIAL: EXTERIOR INSULATED OVERHEAD DOOR COLOR: DARK GRAY
03	MATERIAL: FIBER CEMENT VERTICAL - BOARD & BATTEN SIDING (SMOOTH) MANUFACTURER: JAMES HARDIE OR EQUAL COLOR: DARK GRAY	10	MATERIAL: PRE-FINISHED METAL RAILING (PICKET) COLOR: BLACK	17	MATERIAL: EXTERIOR METAL DOOR & FRAME COLOR: BLACK
04	MATERIAL: METAL SIDING - V GROVE PLANK SIDING MANUFACTURER: LUX ARCHITECTURAL PRODUCT OR EQUAL COLOR: HEMLOCK	11	MATERIAL: PRE-FINISHED METAL AND GLASS RAILING COLOR: BLACK (POST) GLASS: CLEAR	18	MATERIAL: PAR-GING (SMOOTH FINISH CONCRETE FACE INSULATION) COLOR: GRAY
05	MATERIAL: CEMENT BOARD FASCIA (SMOOTH) MANUFACTURER: JAMES HARDIE OR EQUAL COLOR: ARCTIC WHITE	12	MATERIAL: BALCONY PRIVACY SCREEN COLOR: BLACK (POST & FRAME) GLASS: FROSTED	19	DECORATIVE COLOR CONCRETE FINISH COLOR: TO MATCH BRICK FINISH
06	MATERIAL: CEMENT BOARD FASCIA (SMOOTH) MANUFACTURER: JAMES HARDIE OR EQUAL COLOR: DARK GRAY	13	MATERIAL: METAL SLATS (NEO LUMBER SCREEN) MANUFACTURER: LUX ARCHITECTURAL PRODUCTS COLOR: HEMLOCK	20	MATERIAL: METAL LOUVER COLOR: PAINTED TO MATCH ADJACENT WALL FINISH
07	MATERIAL: CEMENT BOARD FASCIA (SMOOTH) MANUFACTURER: JAMES HARDIE OR EQUAL COLOR: BLACK	14	MATERIAL: PVC WINDOW COLOR: BLACK (PVC FRAME) GLASS: CLEAR - TRIPLE GLAZED	21	MATERIAL: EXTRUDED METAL SIGNAGE
				22	SMOOTH CONCRETE FINISH COLOR: GRAY

**GENERAL NOTES**

- REFER TO CIVIL PLANS FOR U/G SERVICE CONNECTIONS. CONFIRM W/ MECHANICAL AND ELECTRICAL DRAWINGS.
- WALL FINISHES AT CORNERS AND BUMP-OUTS RETURN BACK TO BUILDING W/ IDENTICAL MATERIALS AND COLORS, UNLESS NOTED OTHERWISE ON FLOOR PLANS.
- ALL INFORMATION REGARDING SITE GRADING IS PROVIDED BY THE CIVIL ENGINEER AND IS SHOWN ON ARCHITECTURAL DRAWINGS FOR REFERENCE ONLY. IN THE CASE OF A DISCREPANCY, REFER TO APPROVED CIVIL DRAWINGS.
- PROVIDE PRE-FINISHED METAL FLASHING ABOVE / BELOW ALL OPENINGS AND AT ALL HORIZONTAL MATERIAL CHANGES. METAL FLASHING TO MATCH ADJACENT TRIM OR WALL FINISH COLOR WHERE APPLICABLE.
- PROVIDE BLOCKING AND SUBSTRATE AS REQUIRED FOR INSTALLATION AND AS RECOMMENDED BY MATERIAL MANUFACTURER.
- REFER TO CIVIL FOR NUMBER OF RISERS AT EXTERIOR WALKS AND STAIRS.
- COLORS AND MATERIALS SHOWN / SELECTED ARE FOR GENERAL REFERENCE ONLY. FINAL SELECTIONS ARE SUBJECT TO MANUFACTURER PRICING AND AVAILABILITY. MATCHING ALTERNATE MANUFACTURER COLOURS AND MATERIALS MAY BE USED IF APPROVED BY ARCHITECT AND OWNER PRIOR TO CONSTRUCTION.
- ALL WALL VENT / WALL GAP LOCATIONS ARE APPROXIMATE - REFER TO MECHANICAL COLOR TO MATCH ADJACENT EXTERIOR FINISH.
- ALL EXTERIOR FINISH MATERIALS ARE REQUIRED TO BE NON-COMBUSTIBLE AS PER NBC2023 AB, ED.
- REFER TO ELEC. PLANS FOR EXTERIOR AND PATIO/BALCONY LIGHTING.
- ALL RAILINGS TO BE TOP MOUNTED, DOUBLE TOP BAR SQUARE BAR PROFILE.
- ALL EXTERIOR GRILLS, VENTS & FLASHING COLOR TO MATCH ADJACENT MATERIAL.



This drawing has been prepared solely for the use of TRUMAN and there are no representations of any kind made by NORR ARCHITECTS ENGINEERS PLANNERS to any party with whom NORR ARCHITECTS ENGINEERS PLANNERS has not entered into a contract.

This drawing shall not be used for construction purposes until the seal appearing hereon is signed and dated by the Architect or Engineer.

Project Component  
**DEVELOPMENT PERMIT**  
 Key Plan

Consultants  
 Survey: VISTA GEOMATICS LTD.  
 Civil: JUBILEE ENGINEERING CONSULTANTS  
 Architecture: NORR ARCHITECTS ENGINEERS PLANNERS  
 Structural: WOLSEY STRUCTURAL ENGINEERING  
 Mechanical: TLJ ENGINEERING  
 Electrical: TLJ ENGINEERING  
 Interiors: TLJ ENGINEERING  
 Landscape: GROUND CUBED LANDSCAPE ARCHITECTS

**NORR**  
 2300, 411 - 1st Street SE  
 Calgary, AB, Canada T2G 4Y5  
 norr.com  
 NORR Architects Engineers Planners  
 A Partnership of Corporations  
 Jonathan Hughes, Architect, AAA, OAA, OAC, ASBC, SAA, AANB, AAPE  
 Adam Toles, P. Eng., APEGA  
 Chris Paul, P. Eng., APEGA

Project Manager: T. JAIN  
 Drawn: S. KARVETI / M. SALAS  
 Project Leader: M. SALAS  
 Checked: T. JAIN

Client  
**TRUMAN**

#2236, 10 ASPEN STONE BOULEVARD SE CALGARY, ALBERTA

Project  
**WESTBROOK MULTI**  
 3308/3312/3316/3320 - 14TH AVENUE S.W.  
 1445 - 32ND STREET S.W. CALGARY, ALBERTA

Drawing Title  
**BUILDING EXTERIOR ELEVATIONS**

Scale  
 As indicated

Project No.  
 RZ1125-0089

Drawing No.  
 DP40-02



DATE	ISSUED FOR	REV
2025-08-29	DEVELOPMENT PERMIT	A
2026-01-30	DEVELOPMENT PERMIT-DR1	B
2026-04-22	DEVELOPMENT PERMIT-DR2	C



This drawing has been prepared solely for the use of TRUMAN and there are no representations of any kind made by NORR ARCHITECTS ENGINEERS PLANNERS to any party with whom NORR ARCHITECTS ENGINEERS PLANNERS has not entered into a contract.

This drawing shall not be used for construction purposes until the seal appearing hereon is signed and dated by the Architect or Engineer.

Project Component  
**DEVELOPMENT PERMIT**  
 Key Plan

Consultants  
 Survey: VISTA GEOMATICS LTD.  
 Civil: JUBILEE ENGINEERING CONSULTANTS  
 Architecture: NORR ARCHITECTS ENGINEERS PLANNERS  
 Structural: WOLSEY STRUCTURAL ENGINEERING  
 Mechanical: TLJ ENGINEERING  
 Electrical: TLJ ENGINEERING  
 Interiors: TLJ ENGINEERING  
 Landscape: GROUND CUBED LANDSCAPE ARCHITECTS

Seal(s)



2300, 411 - 1st Street SE  
 Calgary, AB, Canada T2G 4Y5  
 norr.com

NORR Architects Engineers Planners  
 A Partnership of Corporations  
 (Part of NORR Architects Engineers Planners Inc. Part of NORR Holdings Inc.)

Jonathan Hughes, Architect, AAA, OAA, ASBC, MAA, AANB, AAPE  
 Adam Toleda, P. Eng., ARE/CA  
 Chris Park, P. Eng., ARE/CA

Project Manager T. JAIN	Drawn S. KARVETI / M. SALAS
Project Leader M. SALAS	Checked T. JAIN

Client  
**TRUMAN**

#2236, 10 ASPEN STONE BOULEVARD SE CALGARY, ALBERTA

Project  
**WESTBROOK MULTI**

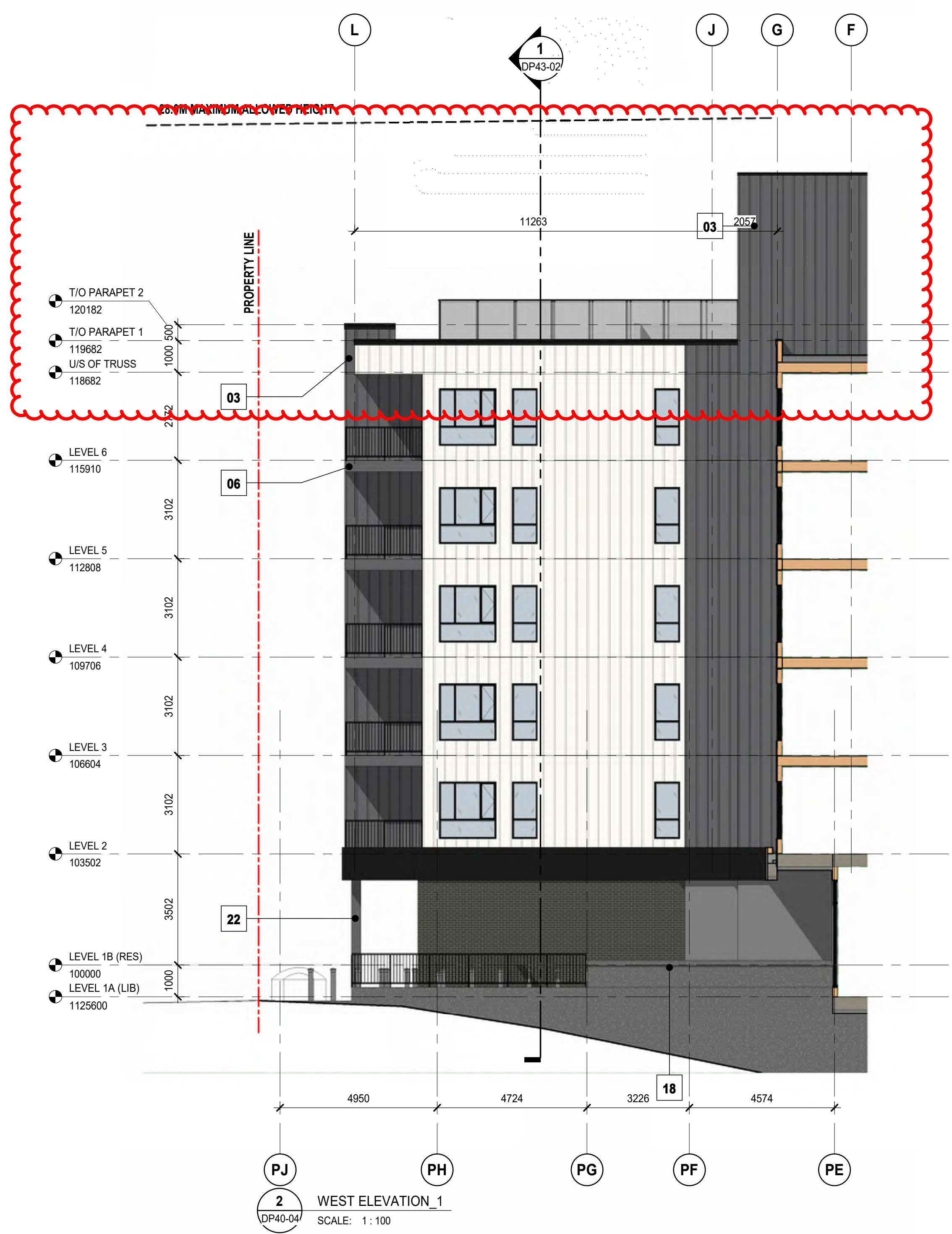
3308/3312/3316/3320 - 14TH AVENUE S.W.  
 1445 - 32ND STREET S.W. CALGARY, ALBERTA

Drawing Title  
**BUILDING EXTERIOR ELEVATIONS**

Scale  
 As indicated

Project No.  
 RZ1125-0089

Drawing No.  
 DP40-04



**2 WEST ELEVATION\_1**  
 SCALE: 1:100  
 DP40-04



**1 WEST ELEVATION**  
 SCALE: 1:100  
 DP40-04

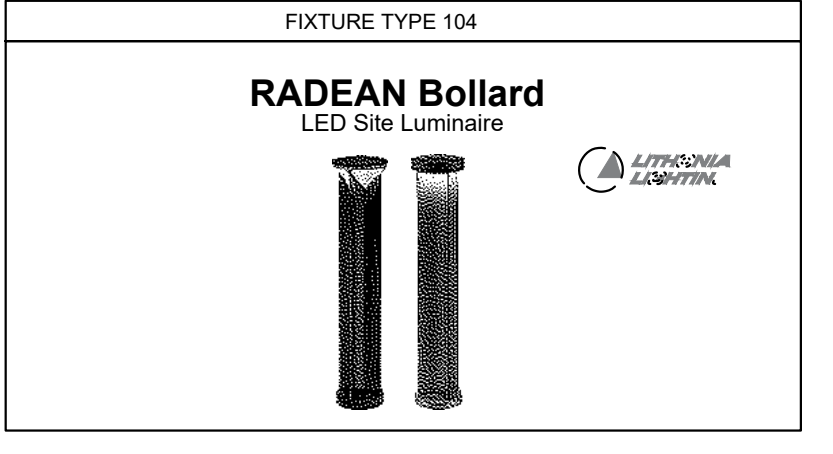
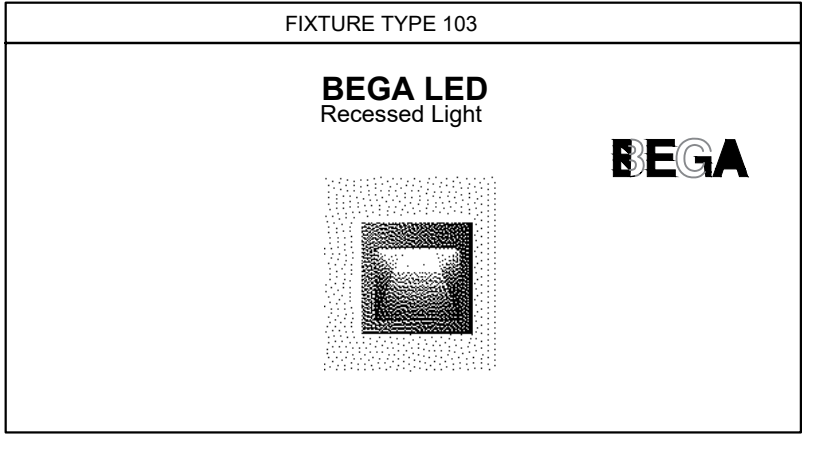
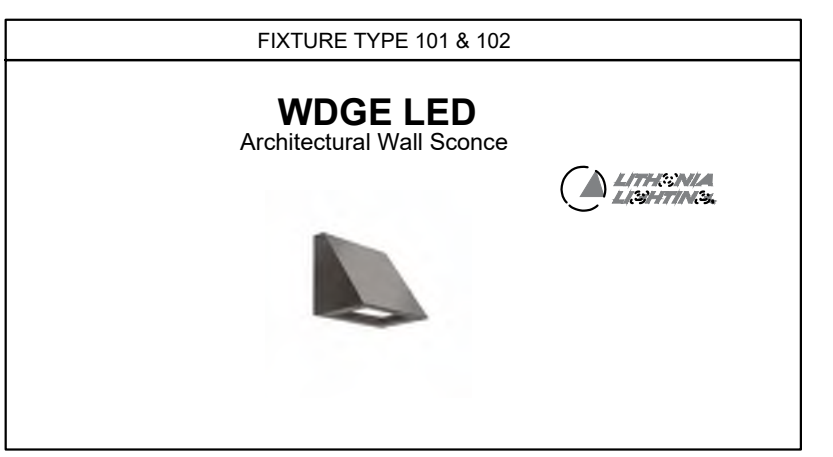
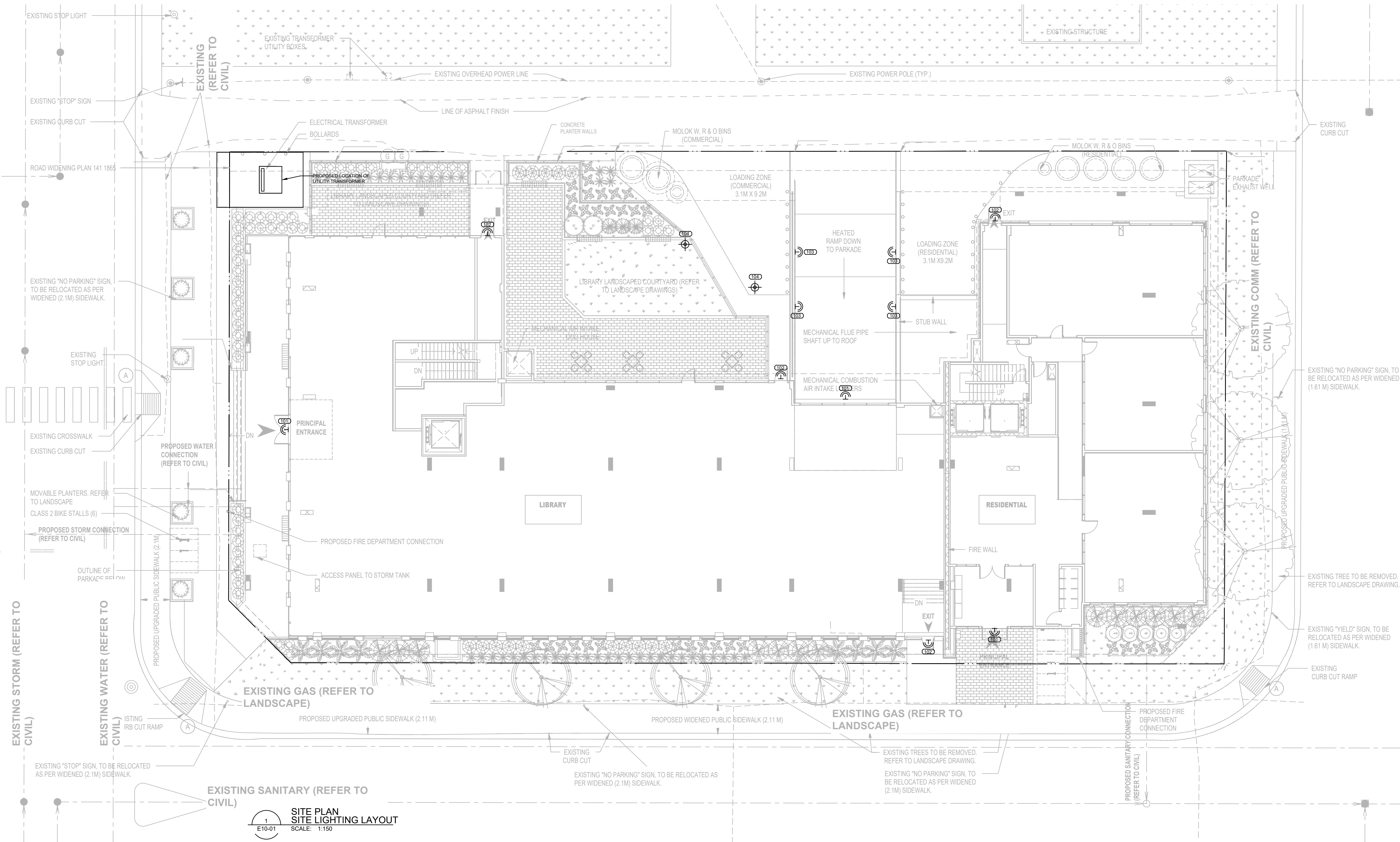
**MATERIAL LEGEND**

<b>01</b> MATERIAL: FULL BRICK MASONRY MANUFACTURER: IXL BRICK OR EQUAL COLOR: COAL	<b>08</b> MATERIAL: PRE-FINISHED ALUMINUM FLASHING COLOR: BLACK	<b>15</b> MATERIAL: PVC PATIO DOOR COLOR: BLACK (FRAME) GLASS: CLEAR
<b>02</b> MATERIAL: FIBER CEMENT VERTICAL - BOARD & BATTEN SIDING (SMOOTH) MANUFACTURER: JAMES HARDIE OR EQUAL COLOR: ARCTIC WHITE	<b>09</b> MATERIAL: ALUMINUM GLAZED CURTAIN WALL SYSTEM COLOR: BLACK ANODIZED (FRAME) GLASS: CLEAR	<b>16</b> MATERIAL: EXTERIOR INSULATED OVERHEAD DOOR COLOR: DARK GRAY
<b>03</b> MATERIAL: FIBER CEMENT VERTICAL - BOARD & BATTEN SIDING (SMOOTH) MANUFACTURER: JAMES HARDIE OR EQUAL COLOR: DARK GRAY	<b>10</b> MATERIAL: PRE-FINISHED METAL RAILING (PICKET) COLOR: BLACK	<b>17</b> MATERIAL: EXTERIOR METAL DOOR & FRAME COLOR: TO MATCH ADJACENT WALL FINISH
<b>04</b> MATERIAL: METAL SIDING - V GROVE PLANK SIDING MANUFACTURER: LUX ARCHITECTURAL PRODUCT OR EQUAL COLOR: HEMLOCK	<b>11</b> MATERIAL: PRE-FINISHED METAL AND GLASS RAILING (POST) GLASS: CLEAR	<b>18</b> MATERIAL: PAR-GING (SMOOTH FINISH CONCRETE FACE INSULATION) COLOR: BLACK
<b>05</b> MATERIAL: CEMENT BOARD FASCIA (SMOOTH) MANUFACTURER: JAMES HARDIE OR EQUAL COLOR: ARCTIC WHITE	<b>12</b> MATERIAL: BALCONY PRIVACY SCREEN COLOR: BLACK (POST & FRAME) GLASS: FROSTED	<b>19</b> DECORATIVE COLOR CONCRETE FINISH COLOR: TO MATCH BRICK FINISH
<b>06</b> MATERIAL: CEMENT BOARD FASCIA (SMOOTH) MANUFACTURER: JAMES HARDIE OR EQUAL COLOR: DARK GRAY	<b>13</b> MATERIAL: METAL SLATS (NEO LUMBER SCREEN) MANUFACTURER: LUX ARCHITECTURAL PRODUCTS COLOR: HEMLOCK	<b>20</b> MATERIAL: METAL LOUVER COLOR: PAINTED TO MATCH ADJACENT WALL FINISH
<b>07</b> MATERIAL: CEMENT BOARD FASCIA (SMOOTH) MANUFACTURER: JAMES HARDIE OR EQUAL COLOR: BLACK	<b>14</b> MATERIAL: PVC WINDOW COLOR: BLACK (PVC FRAME) GLASS: CLEAR - TRIPLE GLAZED	<b>21</b> MATERIAL: EXTRUDED METAL SIGNAGE
		<b>22</b> MATERIAL: SMOOTH CONCRETE FINISH COLOR: GRAY

**GENERAL NOTES**

- REFER TO CIVIL PLANS FOR U/S SERVICE CONNECTIONS. CONFIRM W/ MECHANICAL AND ELECTRICAL DRAWINGS.
- WALL FINISHES AT CORNERS AND BUMP-OUTS RETURN BACK TO BUILDING W/ IDENTICAL MATERIALS AND COLORS, UNLESS NOTED OTHERWISE ON FLOOR PLANS.
- ALL INFORMATION REGARDING SITE GRADING IS PROVIDED BY THE CIVIL ENGINEER AND IS SHOWN ON ARCHITECTURAL DRAWINGS FOR REFERENCE ONLY. IN THE CASE OF A DISCREPANCY, REFER TO APPROVED CIVIL DRAWINGS.
- PROVIDE PRE-FINISHED METAL FLASHING ABOVE / BELOW ALL OPENINGS AND AT ALL HORIZONTAL MATERIAL CHANGES. METAL FLASHING TO MATCH ADJACENT TRIM OR WALL FINISH COLOR WHERE APPLICABLE.
- PROVIDE BLOCKING AND SUBSTRATE AS REQUIRED FOR INSTALLATION AND AS RECOMMENDED BY MATERIAL MANUFACTURER.
- REFER TO CIVIL FOR NUMBER OF RISERS AT EXTERIOR WALKS AND STAIRS.
- COLORS AND MATERIALS SHOWN / SELECTED ARE FOR GENERAL REFERENCE ONLY. FINAL SELECTIONS ARE SUBJECT TO MANUFACTURER PRICING AND AVAILABILITY. MATCHING ALTERNATE MANUFACTURER COLOURS AND MATERIALS MAY BE USED IF APPROVED BY ARCHITECT AND OWNER PRIOR TO CONSTRUCTION.
- ALL WALL VENT / WALL GAP LOCATIONS ARE APPROXIMATE - REFER TO MECHANICAL COLOR TO MATCH ADJACENT EXTERIOR FINISH.
- ALL EXTERIOR FINISH MATERIALS ARE REQUIRED TO BE NON-COMBUSTIBLE AS PER NBC2023 AB, ED.
- REFER TO ELEC. PLANS FOR EXTERIOR AND PATIO/BALCONY LIGHTING.
- ALL RAILINGS TO BE TOP MOUNTED, DOUBLE TOP BAR SQUARE BAR PROFILE.
- ALL EXTERIOR GRILLS, VENTS & FLASHING COLOR TO MATCH ADJACENT MATERIAL.

DATE	ISSUED FOR	REV
25-08-29	DEVELOPMENT PERMIT	A
26-01-30	DEVELOPMENT PERMIT-DR1	B
26-04-22	DEVELOPMENT PERMIT-DR2	C

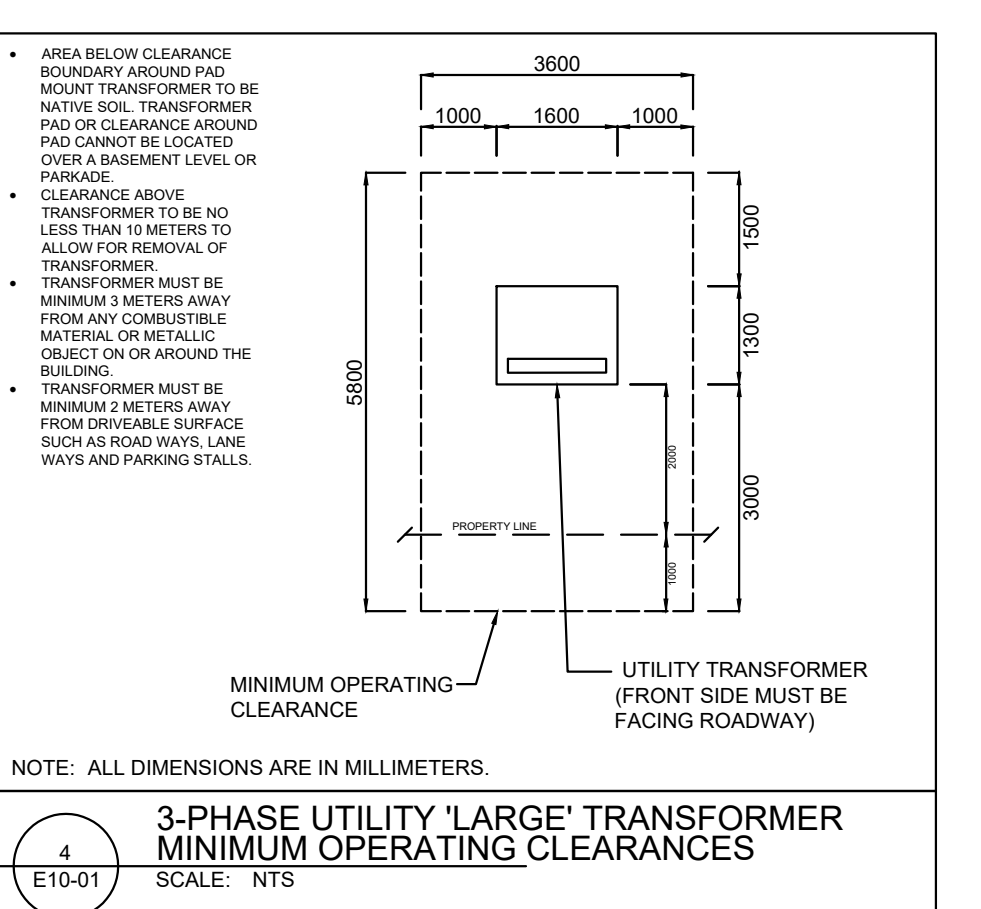
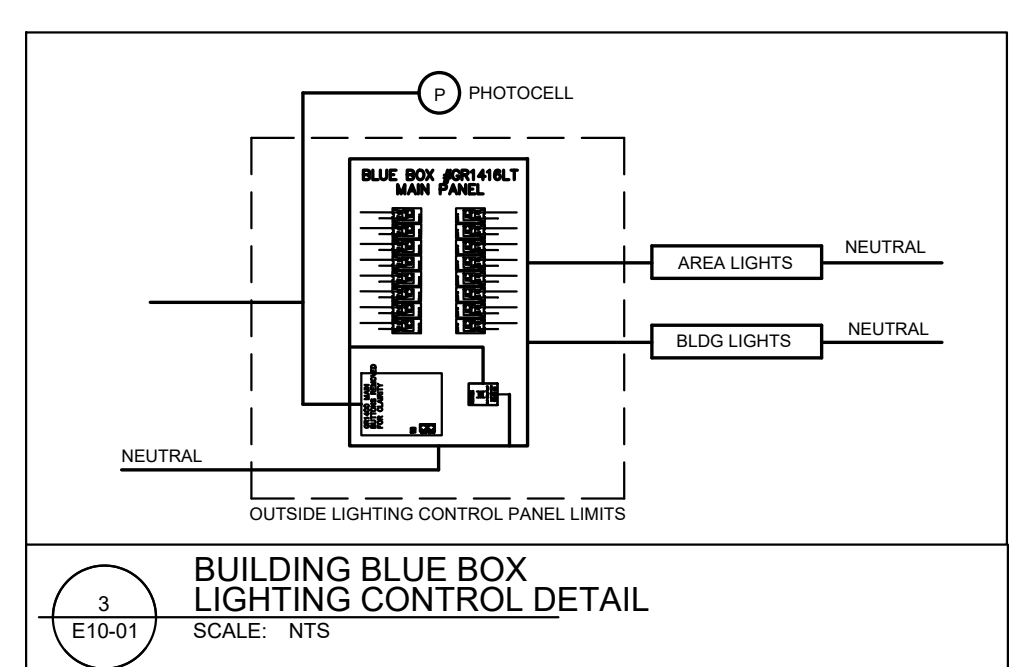
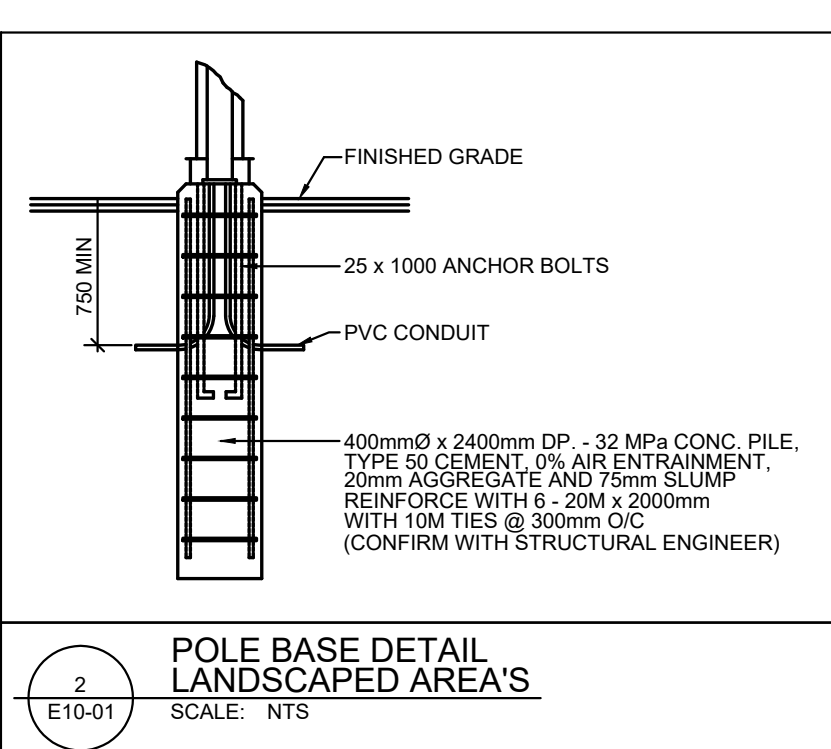


**SITE LIGHTING LEGEND**

SYMBOL	DESCRIPTION
	AREA LIGHT
	WALL MOUNTED EXTERIOR LIGHT
	POT LIGHT

**EXTERIOR LIGHTING SCHEDULE**

TYPE	DESCRIPTION	MANUFACTURER	MANUFACTURERS CATALOGUE NUMBER	LAMP	LUMENS	QUANTITY	TOTAL WATTS	MOUNTING	VOLTS	REMARKS
(101)	MAIN ENTRANCE WALL LIGHT	LITHONIA	WDGE2 LED P3 30K VF MVOLT SRM DBLXD	23W LED	3015	3	89W	WALL	120	
(102)	EXTERIOR DOWNLIGHT	LITHONIA	WDGE1 LED FT 30K 90CRI 1W MVOLT SRM DBLXD	12W LED	1183	4	49W	WALL	120	
(103)	RECESSED RAMP LIGHT	BEGA	24 211	4.8W LED	581	4	19.2W	RECESSED	120	
(104)	BOLLARD LIGHT	LITHONIA	RADB LED P3 30K ASY MVOLT BTDBLXD BCCBLXD H30 DBLXD	13W LED	1088	2	26W	BOLLARD	120	TO BE MOUNTED ON 16' POLE



CONSULTANT:  
**TRL ENGINEERING**  
 MECHANICAL ELECTRICAL  
 PROJECT # 2021-007

**TRUMAN**

This drawing has been prepared solely for the use of TRUMAN HOMES and there are no representations of any kind made by

This drawing shall not be used for construction purposes until the seal appearing hereon is signed and dated by the Architect or Engineer.

Project Component  
**CONSTRUCTION**

Key Plan

Consultants  
 Survey: VISTA GEOMATICS LTD.  
 Civil: JUBILEE ENGINEERING  
 Architecture: NORR ARCHITECTS ENGINEERS PLANNERS  
 Structural: TRL ENGINEERING  
 Mechanical: TLJ ENGINEERING  
 Electrical: TLJ ENGINEERING  
 Landscape: GROUND CUBED LANDSCAPE ARCHITECTS

Seal(s)

**NORR**

2300, 411 - 1st Street SE  
 Calgary, AB, Canada T2G 4Y5  
 norr.com

NORR Architects Engineers Planners  
 A Partnership of Limited Companies

Brant D. McPherson, Architect, A.A.A., A.B.C.  
 A. Siva Balaraman, Architect, A.A.A., A.R.C., O.A.A.  
 Arjun Tandon, P. Eng., A.P.E.S.A.  
 Chris Pat. P. Eng., A.P.E.S.A.

Project Manager: Drawn T.K.  
 K. VIG  
 Project Leader: Checked J.P./K.V.  
 J. PURA

Client  
**TRUMAN**

2236 - 10 ASPEN STONE BLVD SW, CALGARY, ALBERTA, T3H 0K3

Project  
**WESTBROOK MULTI**

3308/3312/3316/3320 - 14TH AVENUE S.W.  
 1445 - 32ND STREET S.W. CALGARY, ALBERTA

Drawing Title  
**SITE PLAN  
 SITE LIGHTING LAYOUT**

Scale  
 AS INDICATED

Project No.  
 RZ1125-0089

Drawing No.  
**E10-01**