



CORNERSTONE 10-12 HIGH SCHOOL

380 CORNERSTONE ST NE, CALGARY, AB.
PLAN 2210401; Block:27; Lot:1 MSR

BID NO.
SITE NO.
PLAN NO.
PROJECT ID
CONTRACT ID 041788

ISSUED FOR DEVELOPMENT PERMIT UPDATE 08.08.2025

CONSULTANTS:

PROJECT NO.: 144216510

ARCHITECTURAL



ELECTRICAL



CIVIL



LANDSCAPE



INDEX - ARCHITECTURAL	
Sheet Number	Sheet Name
DP 100	SITE PLAN
DP 101	CONTEXT PLAN
DP 102	SITE DETAILS
DP 103 - 1	SITE PLAN - TRUCK TURNING MOVEMENTS
DP 103 - 2	SITE PLAN - TRUCK TURNING MOVEMENTS
DP 104	SITE PHOTOGRAPHS
DP 105	3D RENDERING
DP 106	MAIN FLOOR PLAN
DP 107	SECOND FLOOR PLAN
DP 108	THIRD FLOOR PLAN
DP 109	EXTERIOR ELEVATIONS
DP 110	BUILDING CROSS-SECTIONS

INDEX - ELECTRICAL	
Sheet Number	Sheet Name
E 001	GENERAL NOTES, SYMBOLS, LUMINAIRE SCHEDULE
E 002	SITE PLAN - ELECTRICAL
E 003	SITE PLAN - PHOTOMETRICS

INDEX - CIVIL	
Sheet Number	Sheet Name
C 101	PRELIMINARY UNDERGROUND UTILITY SERVICING PLAN - SOUTH
C 101-1	PRELIMINARY UNDERGROUND UTILITY SERVICING PLAN - NORTH
C 102	PRELIMINARY SURFACE GRADING PLAN - SOUTH
C 102 - 1	PRELIMINARY SURFACE GRADING PLAN - NORTH

INDEX - LANDSCAPE	
Sheet Number	Sheet Name
L 101	LANDSCAPE SITE AND PLANTING PLAN
L 102	LANDSCAPE SITE AND PLANTING PLAN - RENDER



MAIN ENTRANCE VIEW FROM THE PARKING



PERSPECTIVE VIEW FROM CORNERSTONE BLVD.



NORTH ELEVATION- VIEW FROM ACROSS STREET

KEY PLAN

NOTES

COPYRIGHT RESERVED
The Contractor shall verify and be responsible for all dimensions. DO NOT scale the drawing. Any errors or omissions shall be reported to Stantec without delay. The Copyrights to all designs and drawings are the property of Stantec. Reproduction or use for any purpose other than that authorized by Stantec is forbidden.

DATE	REV.	DESCRIPTION	DRAWN BY	CHECKED BY
08.08.2025		ISSUED FOR DEVELOPMENT PERMIT UPDATE		
07.25.2025		ISSUED FOR DEVELOPMENT PERMIT		

DATE	REV.	DESCRIPTION	DRAWN BY	CHECKED BY
08.08.2025		ISSUED FOR DEVELOPMENT PERMIT UPDATE		
07.25.2025		ISSUED FOR DEVELOPMENT PERMIT		

CONSULTANT
Stantec
 Stantec Architecture Ltd.
 200 - 325 25th Street SE
 Calgary, Alberta T2A 7N5
 Tel: (403) 716 8000 www.stantec.com
 Stantec Project No.: 144216510

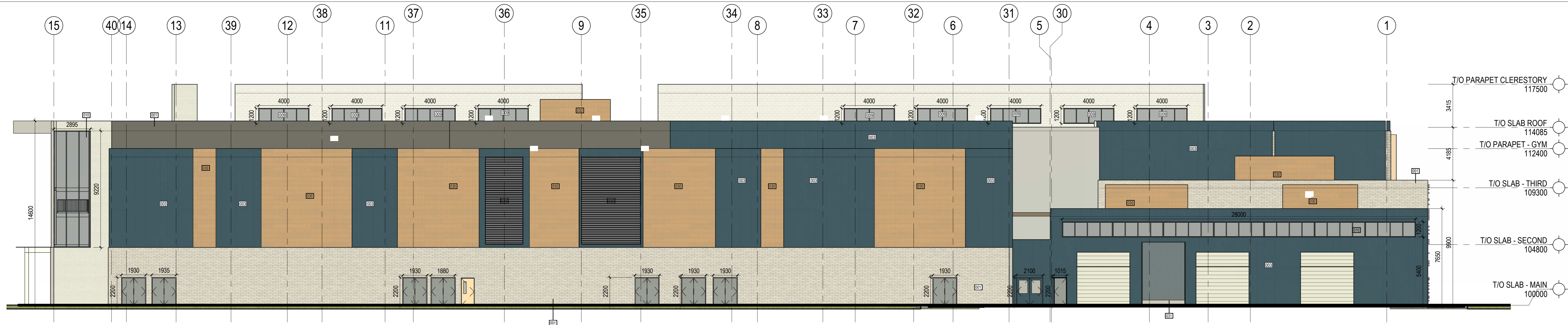


PROJECT
CORNERSTONE 10-12 HIGH SCHOOL
 380 CORNERSTONE ST NE, CALGARY, AB.
 PLAN Z210401; Block 27; Lot 1 MSR

TITLE
 3D RENDERING

SEAL	DRAWN BY	CHECKED BY	SCALE
	Author	Checker	
	DATE	SITE ID	BUILDING ID
	08.08.2025		
	PLAN NO.	PHASE	DISCIPLINE
	PROJECT ID	SHEET NO.	DP 105

DOCUMENT CODE
 DP 105



1 DP EAST EXTERIOR ELEVATION
 1:150
 DP 109



2 DP NORTH EXTERIOR ELEVATION
 1:150
 DP 109



3 DP SOUTH EXTERIOR ELEVATION
 1:150
 DP 109



4 DP WEST EXTERIOR ELEVATION
 1:150
 DP 109

KEY PLAN

NOTES

KEYNOTE LEGEND	
Key Value	Keynote Text
001	SMOOTH FACE BRICK VENEER - RUNNING BOND - 33% ASHE, 33% FEWTER, 33% ARCTIC WHITE
003	PREFINISHED METAL GLADDING - COLOUR CARBON
009	PUNCH WINDOWS
010	GLAZED ALUMINUM CURTAIN WALL GLAZING
018	GLAZED INSULATED HM DOOR - PAINT FINISH
020	PREFINISHED MECHANICAL LOUVER - COLOUR MATCHED DEEP GREY
030	PREFINISHED METAL GLADDING - WOOD LOOK
031	STEEL FENCE

COPYRIGHT RESERVED
 The Contractor shall verify and be responsible for all dimensions. DO NOT scale the drawing - any errors or omissions shall be reported to Stantec without delay. The Copyrights to all designs and drawings are the property of Stantec. Reproduction or use for any purpose other than that authorized by Stantec is forbidden.

DATE	REV.	DESCRIPTION	DRAWN BY	CHECKED BY
2025.08.08		ISSUED FOR DEVELOPMENT PERMIT UPDATE		
07.25.2025		ISSUED FOR DEVELOPMENT PERMIT		

CONSULTANT

Stantec
 Stantec Architecture Ltd.
 200 - 325 25th Street SE
 Calgary, Alberta T2A 7H8
 Tel: (403) 716 8000 www.stantec.com
 Stantec Project No.: 144216510

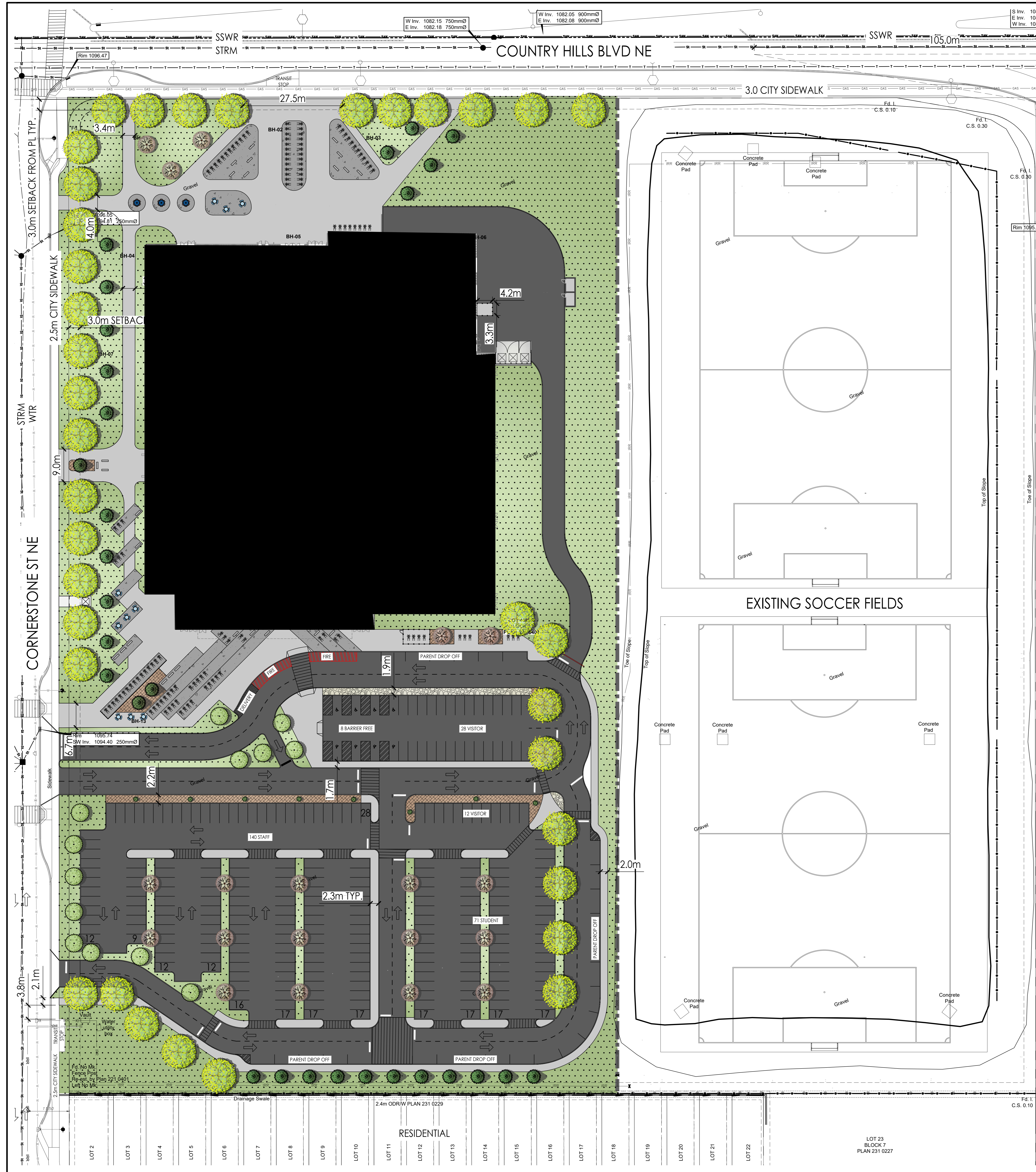


PROJECT
CORNERSTONE 10-12 HIGH SCHOOL
 380 CORNERSTONE ST NE, CALGARY, AB.
 PLAN 2210401; Block 27; Lot 1 MSR

TITLE
EXTERIOR ELEVATIONS

SEAL	DRAWN BY	CHECKED BY	SCALE
	Author	Checker	1:150
	DATE	SITE ID	BUILDING ID
	2025.08.08		
	PLAN NO.	PHASE	DISCIPLINE
	PROJECT ID	SHEET NO.	
			DP 109

DOCUMENT CODE
 DP 109



REFERENCE NOTES SCHEDULE

SYMBOL	DESCRIPTION	QTY
	8FT CHAIN LINK FENCE (AROUND DUST COLLECTOR)	11m
	BARK MULCH	509.5 m ²
	COMPACTED GRAVEL WITH LIMESTONE FINES	121.5 m ²
	STANDARD CONCRETE SIDEWALK	3,852 m ²
	DARK GREY CONCRETE WITH SANDBLAST TREATMENT	1,269 m ²
	ASPHALT	13,021 m ²
	BIKE RACK WITH 2 BIKE ATTACHMENTS 121 CLASS 2 BIKE RACKS FOR A TOTAL OF 242 BIKE CAPACITY (2 BIKES PER RACK)	121
	PICNIC TABLE	10
	BENCH	26
	PICNIC TABLE WITH UMBRELLA ATTACHMENT	3
	CLASS 1 BIKE RACKS IN LOCKABLE ENCLOSURE FOR STAFF. 4 RACKS FOR 8 BIKES. ENCLOSURE TO BE 2.4m (8') ANTI-CLIMB FENCING	4

PLANT SCHEDULE

SYMBOL	QTY	BOTANICAL / COMMON NAME	CAL/HT
	34	FRAXINUS PENNSYLVANICA / GREEN ASH	70MM CAL.
	29	PICEA GLAUCA / WHITE SPRUCE	3.0M HT.
	8	PICEA PUNGENS 'FASTIGIATA' / COLUMNAR COLORADO SPRUCE	3.0M HT.
	20	PRUNUS MAACKII / AMUR CHOKECHERRY	50MM CAL.
	13	SYRINGA RETICULATA 'IVORY SILK' / IVORY SILK JAPANESE TREE LILAC	70MM CAL.
	11,542 m ²	SOD / SOD MIX	SOD

NOTE:

- ALL ELEMENTS ARE PROPOSED UNLESS OTHERWISE NOTED ON THE PLAN
- NO IRRIGATION

KEY PLAN
TRUE NORTH

BYLAW REVIEW

Address	380 Cornerstone ST NE, Calgary, AB
Legal Description	2210401, Block 27, Lot 1 MSR
Zoning	S-SPR Special Purpose - School, Park and Community Reserve
Setback	3.0 metres (Front, Rear and Side)
Building Area	20510 sq.m.
Number of Student	2410
Number of Staff	241 (To be Confirmed)
Motor Vehicle Parking Stall	208 stall (Reference: Group A - 1 motor vehicle parking stall per 100 square metre of gross usable floor area). Site Plan Shows 208 stalls based on anticipated parking requirements. TBC with CBE/ AHJ.
Barrier Free Parking Stall	5 (Reference: ABC 2023)
Loading Stall	3 stall (Reference: Loading stalls per 9300.0 square metres of gross floor area where the cumulative gross floor area of all buildings on a parcel is greater than 930.0 square metres)
Pick-up & Drop off Stall	61 stall (Reference: Minimum 2.5 pick-up and drop-off stalls per 100 students, with a minimum of 5.0 pick-up and drop-off stalls)
Bicycle Parking Stall	8 bicycle stall for 241 Staff. (Reference: Minimum number of bicycle parking stalls: class 1 equal to 3.0 per cent of the maximum number of employees.) 241 bicycle stalls for 2410 Students. (Reference: Minimum number of bicycle parking stalls: class 2 equal to 10.0 per cent of the maximum number of students as stated in the development permit.)

COPYRIGHT RESERVED
The Contractor shall verify and be responsible for all dimensions. DO NOT scale the drawing. Any error or omissions shall be reported to Stantec without delay. The Copyrights to all designs and drawings are the property of Stantec. Reproduction or use for any purpose other than that authorized by Stantec is forbidden.

DATE	REV.	DESCRIPTION	DRAWN BY	CHECKED BY
2025.08.08	1	ISSUED FOR DEVELOPMENT PERMIT UPDATE	KP	MW
2025.07.25	0	ISSUED FOR DEVELOPMENT PERMIT	KP	MW

CONSULTANT

Stantec Architecture Ltd.
200 - 325 29th Street SE
Calgary, Alberta T2A 7H8
Tel: (403) 716 8000 www.stantec.com
Stantec Project No.: 144216510

Alberta Infrastructure

PROJECT
CORNERSTONE 10-12 HIGH SCHOOL
380 CORNERSTONE ST NE, CALGARY, AB
PLAN 2210401, Block 27, Lot 1 MSR

TITLE
LANDSCAPE SITE AND PLANTING PLAN

SEAL	DRAWN BY MW	CHECKED BY MW	SCALE 1:400
	DATE 2025.08.08	SITE ID	BUILDING ID
	PLAN NO. 023319	PHASE	DISCIPLINE LANDSCAPE
	PROJECT ID	SHEET NO.	L - 101

DOCUMENT CODE
023319 - DP 100 (1)