

CLIENT



MOVATI ATHLETIC
20 RENAUD STREET
AMHERSTBURG, ONTARIO
N0Y 4B1
TELEPHONE: (647) 478-3166

PRIME CONSULTANT



TBD ARCHITECTURE + URBAN PLANNING
9916 81 AVENUE NW
EDMONTON, ALBERTA
T6E 1W6
TELEPHONE: (780) 428 8001

- A000 COVER
- A001 SURVEY PLAN
- A021 SITE PLAN
- A022a FIRE ACCESS PLAN
- A022b FIRE ACCESS PLAN (SWEEP PATH)
- A101 OVERALL - MAIN FLOOR PLAN
- A102 OVERALL - SECOND FLOOR PLAN
- A103 OVERALL - ROOF PLAN
- A201 EXTERIOR ELEVATION
- A202 EXTERIOR ELEVATION
- A211 BUILDING SECTIONS
- A212 BUILDING SECTIONS

ELECTRICAL CONSULTANT



ECCOM CONSULTING INC.
13009 156 STREET NW
EDMONTON, ALBERTA
T5V 0A2
TELEPHONE: (780) 444-2200

- E00 SITE PLAN ELECTRICAL
- E0A SITE PLAN PHOTO-METRIC

CIVIL CONSULTANT



SEDULOUS ENGINEERING INC.
105 - 10555 48TH STREET SE
CALGARY, ALBERTA
T2C 2B7
TELEPHONE: (403) 807-2496

- C-1 SERVICING PLAN
- C-2 SITE GRADING PLAN

LANDSCAPE CONSULTANT



PLANT STUDIO
1006, 105 26TH AVE SW
CALGARY, ALBERTA
T2S 0M3
TELEPHONE: (403) 454-8115

- L10 LANDSCAPE PLAN
- L11 TREE PROTECTION PLAN
- L20 LANDSCAPE DETAILS
- L21 LANDSCAPE DETAILS



Project No.	23-108
Sheet	
Revision	
Drawing Number	A000
COVER	

SEAL

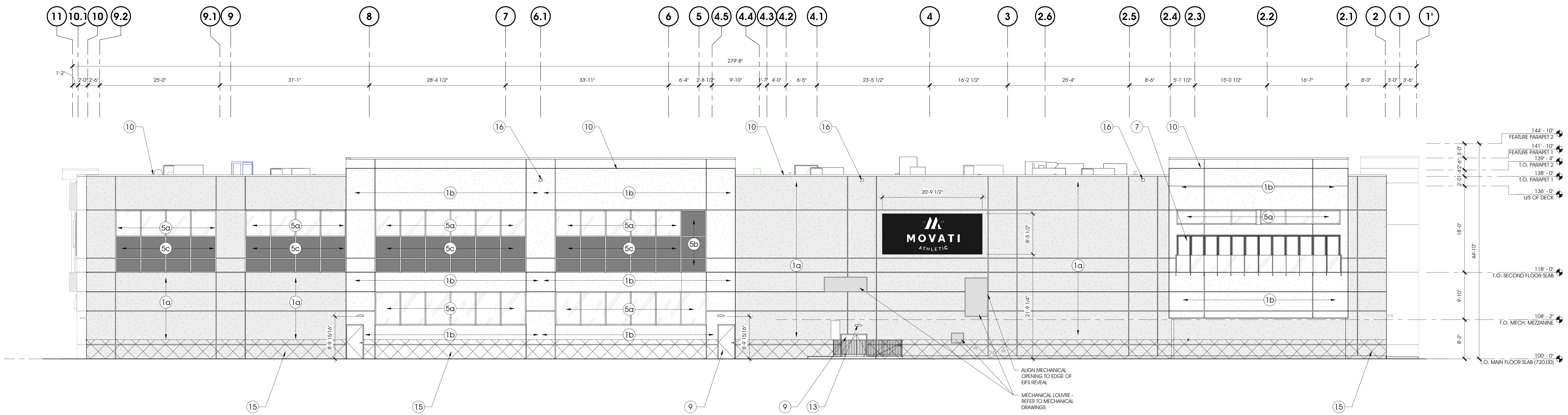
CONSULTANT

MOVATI ATHLETIC - SETON
19491 SETON WAY, CALGARY, ALBERTA - PART OF PLAN 1111669; BLOCK-4; LOT:1
ISSUED FOR DEVELOPMENT PERMIT - JUNE 13, 2025

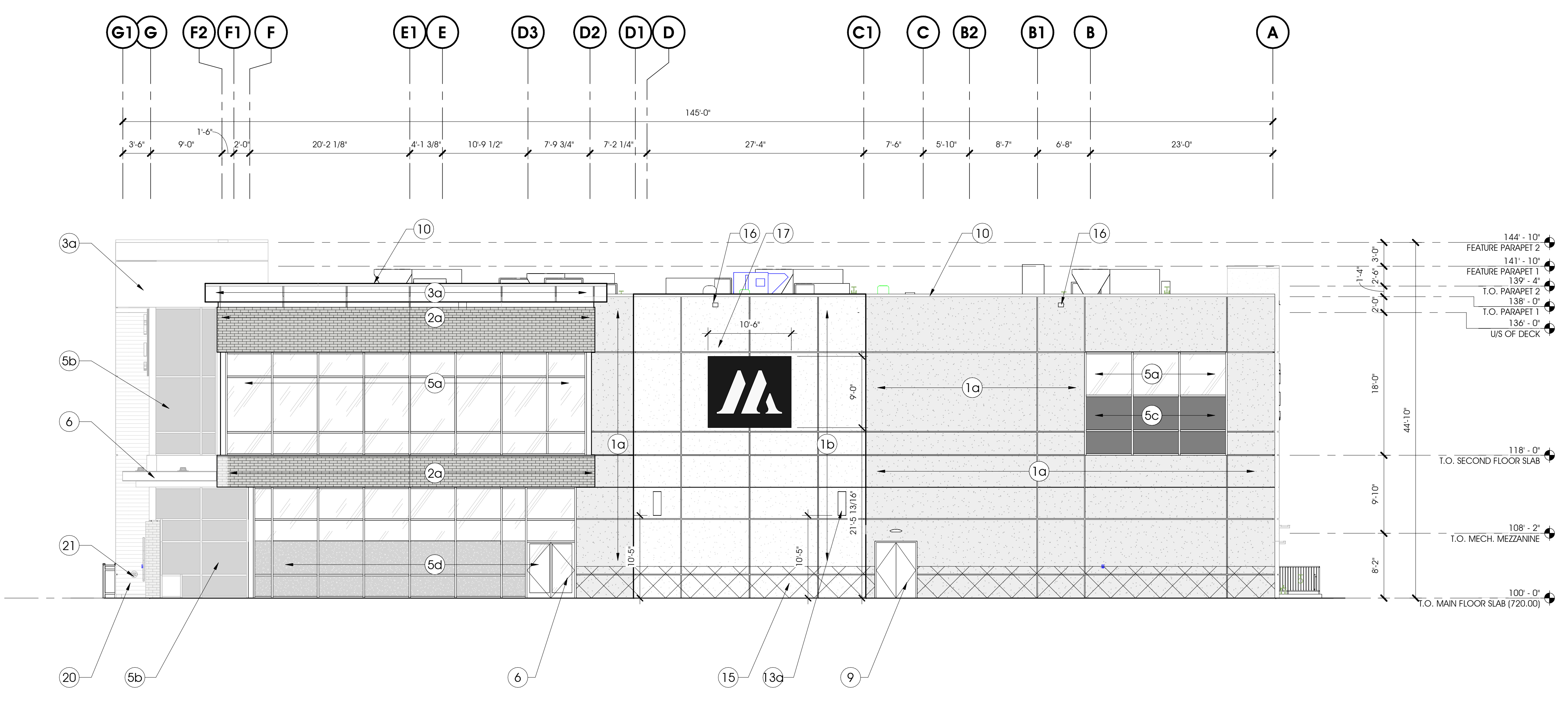


A000
COVER

FOR INFORMATION ONLY
NOT FOR CONSTRUCTION



3 SOUTH ELEVATION
SCALE 1/8" = 1'-0"



4 WEST ELEVATION
SCALE 1/8" = 1'-0"

EXTERIOR ELEVATION KEYNOTES

1a	ERS OR NON-COMBUSTIBLE EFS (REFER TO FLOOR PLAN AND SECTIONS) COLOUR: BENJAMIN MOORE HC 179 PLATINUM GRAY
1b	ERS OR NON-COMBUSTIBLE EFS (REFER TO FLOOR PLAN AND SECTIONS) COLOUR: BENJAMIN MOORE OC59 HORIZON
2a	MASONRY VENEER (BRANNING BOND) COLOUR: BLACK DIAMOND TEXTURE: VEOUR DIMENSIONS: 3'-0" D x 3'-0" H x 11'-0" L UTILITY MORTAR JOINT: CONCAVE
3a	METAL COMPOSITE PANEL COLOUR: WHITE
5a	ANODIZED ALUMINUM STOREFRONT C/W SEALED GLAZING UNIT FRAME COLOUR: DARK BRONZE GLAZING: CLEAR
5b	ANODIZED ALUMINUM VENEER FRAME C/W SEALED SPANDREL GLAZING UNIT FRAME COLOUR: DARK BRONZE GLAZING: GREY
5c	ANODIZED ALUMINUM STOREFRONT C/W SEALED SPANDREL GLAZING UNIT FRAME COLOUR: DARK BRONZE GLAZING: GREY
5d	ANODIZED ALUMINUM STOREFRONT C/W SEALED GLAZING UNIT FRAME COLOUR: DARK BRONZE GLAZING: CLEAR WITH WHITE FILM
6	METAL CANOPY: PRIMED AND PAINTED MANUFACTURER: ARCHITECT TO CONFIRM COLOUR: DARK BRONZE
7	FOLDING SLIDING GLAZING WALL FRAME COLOUR: DARK BRONZE
8a	ANODIZED ALUMINUM DOOR C/W CLEAR SEALED GLAZING FRAME COLOUR: DARK BRONZE GLAZING: CLEAR
8b	ANODIZED ALUMINUM DOOR C/W CLEAR SEALED GLAZING FRAME COLOUR: DARK BRONZE GLAZING: CLEAR WITH WHITE FILM PANEL COLOUR: DARK BRONZE
8c	ANODIZED ALUMINUM SLIDING DOOR C/W CLEAR SEALED GLAZING FRAME COLOUR: DARK BRONZE GLAZING: CLEAR PANEL COLOUR: DARK BRONZE
9	INSULATED METAL DOOR C/W INSULATED METAL FRAME PANEL COLOUR: COLOUR TO MATCH ADJACENT WALL FINISH FRAME COLOUR: COLOUR TO MATCH ADJACENT WALL FINISH
10	PREFINISHED METAL CAP FLASHING COLOUR: COLOUR TO MATCH ADJACENT PARAPET FINISH
13	EXTERIOR LIGHT FIXTURE. REFER TO ELECTRICAL DRAWINGS COLOUR: ARCHITECT TO CONFIRM
13a	EXTERIOR LIGHT FIXTURE C/W WITH SHROUD. REFER TO ELECTRICAL DRAWINGS AND DETAIL (15A456) COLOUR: PLATINUM GREY
15	HATCH INDICATES EXTENT OF HIGH IMPACT EFS
16	PREFINISHED METAL SCURFER COLOUR: TO MATCH ADJACENT FINISH
17	SIGNAGE N.I.C. PROVIDE PLYWOOD BACKING FOR FUTURE SIGNAGE. FIRE RATED PLYWOOD BACKING AT FIRE RATED WALL
19	ORNAMENTAL FENCE COLOUR: DARK BRONZE
20	COMPOSITE WOOD SKING COLOUR: PE
21	FIRE DEPARTMENT CONNECTION

EXTERIOR ELEVATION NOTES

- METAL FLASHING COLOUR AT PARAPET CAP, SCUPPERS, METAL DOOR HEADER, AND JAMBS:
A. AT ACM (HMM BIO WHITE), FLASHING COLOUR: CASCADIA (BRIGHT WHITE)
B. AT EFS (HORIZON OC-53), FLASHING COLOUR: CASCADIA (POLAR WHITE)
C. AT EFS (PLATINUM GRAY HC-179), FLASHING COLOUR: CASCADIA (REGENT GREY)
- METAL FLASHING COLOUR AT CURTAIN WALL HEADER:
A. AT MASONRY VENEER (BLACK DIAMOND), FLASHING COLOUR: CASCADIA (DARK BROWN)
B. AT EFS (HORIZON OC-53), FLASHING COLOUR: CASCADIA (POLAR WHITE)
C. AT EFS (PLATINUM GRAY HC-179), FLASHING COLOUR: CASCADIA (REGENT GREY)
- METAL FLASHING COLOUR AT MATERIAL TRANSITION:
A. AT CONCRETE FACED INSULATION, FLASHING COLOUR: CASCADIA (STONE GREY)