

CLIENT
 McDonald's Restaurants of Canada Ltd.
 4400 58th Street SW
 Burnaby, BC V5C 6C6
 Tel: 604-294-2181

COPYRIGHT
 Any reproduction or distribution for any purpose other than authorized by Arcadis is forbidden. Written dimensions shall have precedence over scaled dimensions. Contractors shall verify and be responsible for all dimensions and conditions on the job and Arcadis shall be informed of any variations from the dimensions and conditions shown on the drawing. Shop drawings shall be submitted to Arcadis for approval before proceeding with fabrication.
 COPYRIGHT © 2026
 ARCADIS PROFESSIONAL SERVICES (CANADA) INC.

CITY OF CALGARY
 Planning & Development Services
Feb 03 2026
RECEIVED

DRAWING ISSUE RECORD

#	DATE	BY	DESCRIPTION
4	2026-01-26	ND	REVISION AS PER DETAILED REVIEW 2 - DP
3	2025-10-23	ND	REISSUED FOR DP
2	2025-10-07	PE	ISSUED FOR TENDER
1	2025-05-30	ND	ISSUED FOR DP

DETAILS OF DEVELOPMENT

ZONING	DATA	REQUIRED	PROPOSED
	COMMERCIAL - COMMUNITY 1 (C-C1) DISTRICT		
SETBACK	FY	3.0 M	10.46M
	RY	0.0 M	40.30M
	INT. SY	0.0 M	20.19M
	EXT. SY	0.0 M	9.54M
McD-LEASE AREA		3,647.30 SM	
RESTAURANT AREA		376 SM	
PUBLIC SPACE		105 SM	
EARTH BINS		PROVIDED	
LOT COVERAGE		1.5%	
# OF LOADING SPACES		1	
LANDSCAPE AREA		756.74SM (20.74%)	
DT STACKING		12	
PARKING REQUIRED		5 SPACES	
PARKING PROVIDED		35 SPACES	

DEVELOPMENT PERMIT DECISION RENDERED ON THIS PLAN

NOTES

- CALGARY LAND USE BYLAW 1P2007**
- PARKING CALCULATION:**
 DRIVE-THROUGH - 5 MOTOR VEHICLE PARKING STALLS
 RESTAURANT - N/A
- ALL SITE FEATURES ARE EXISTING UNLESS OTHERWISE NOTED.
 - THESE DRAWINGS ARE COMPILED FROM INFORMATION SUPPLIED BY McDONALD'S AND SHALL BE SITE VERIFIED BY CONTRACTOR AT BID TIME.
 - GC TO COORDINATE AND PROVIDE SERVICING LOCATES TO IBI GROUP PRIOR TO CONSTRUCTION START TO CONFIRM THERE ARE NO CONFLICTS WITH PROPOSED.
 - CONTRACTOR SHALL VERIFY ALL SITE CONDITIONS PERTINENT TO WORK BEING PERFORMED, PRIOR TO STARTING CONSTRUCTION, AND REPORT ANY DISCREPANCIES OR VARIANCES TO PROJECT MANAGER.
 - CONTRACTOR SHALL VERIFY ALL DIMENSIONS PRIOR TO CONSTRUCTION AND BE RESPONSIBLE FOR SAME.
 - ALL WORK SHALL CONFORM TO THE REQUIREMENTS OF LOCAL CODES.

PRIME CONSULTANT
ARCADIS
 Arcadis Professional Services (Canada) Inc.
 Suite 200, East Wing-360 James Street North
 Hamilton, ON L8L 1H5 | CANADA
 T +1 905 546 1010
 www.arcadis.com

PROJECT
McDONALD'S
41403-ALPINE PARK
 15153 37 STREET SW, CALGARY, AB

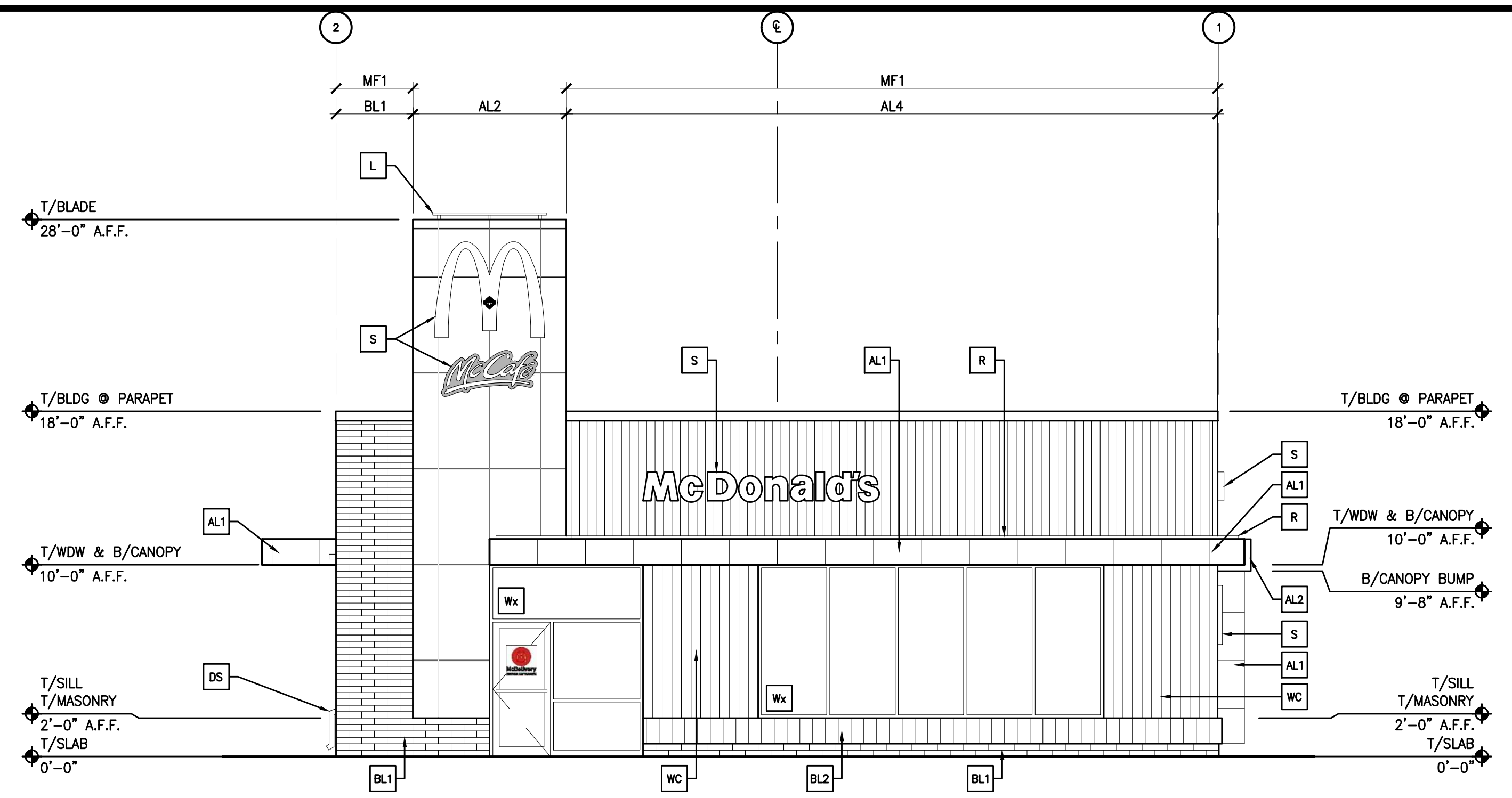
PROJECT NO: 144541
DRAWN BY: ND
CHK'D BY: TW
SCALE: 1:200
DATE: 2025 05 30

LEGAL DESCRIPTION

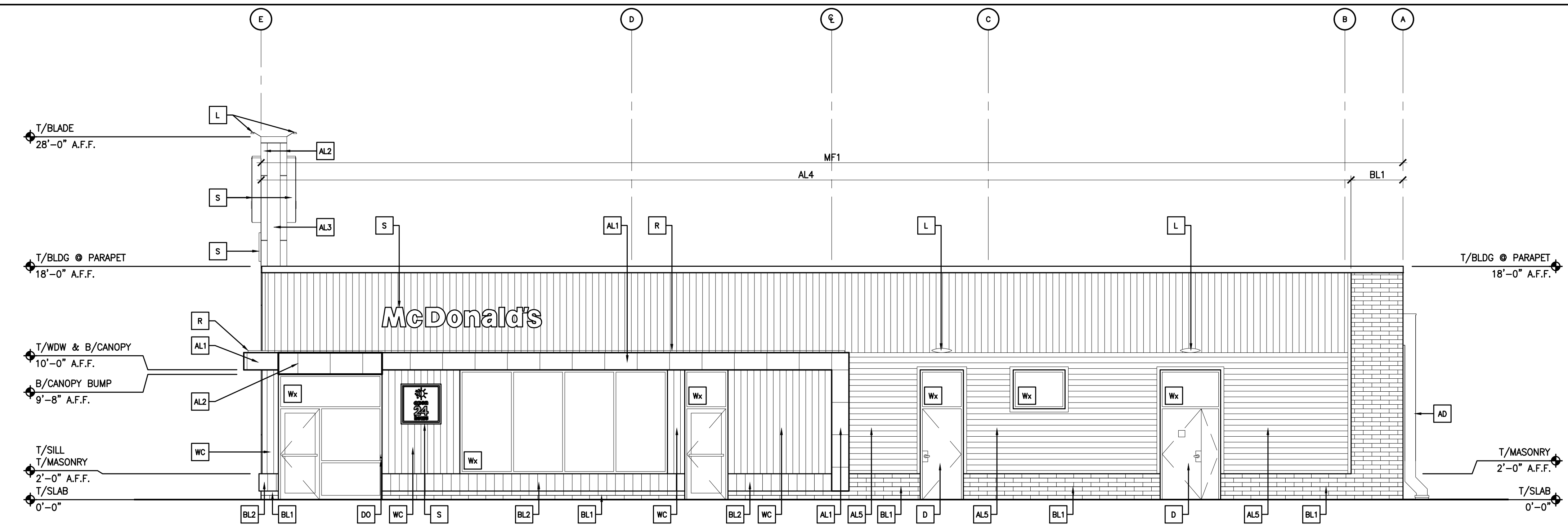
NW ¼ SECTION 31-22-1-5 / BLOCK 28 / LOT 2

SHEET TITLE
SITE PLAN
SP1.0

File Location: \\hamilton\44541_McD_Alpine\03_Production\03_Design\17_Plan\01\144541.ssp.dwg Last Saved: January 26, 2026, 10:56:00 AM by: Dymara, Nicole



1 EAST ELEVATION - FRONT
A200 SCALE: 3/16" = 1'-0"

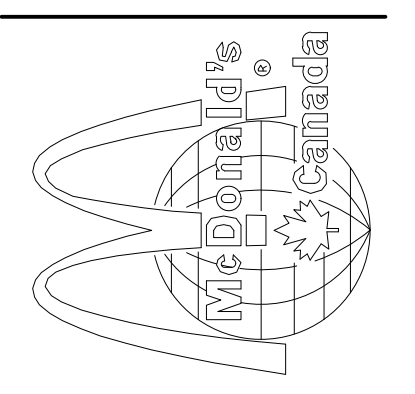


2 NORTH ELEVATION - NON-DRIVE THRU
A200 SCALE: 3/16" = 1'-0"

KEY NOTES

- | | | |
|---|--|--|
| AL1 MITSUBISHI 4mm ALPOLIC METAL CLADDING - COLOUR "BONE WHITE" | D INSULATED HOLLOW METAL DOOR - PAINT COLOUR "PPG" McD 44 - CHARCOAL GREY | PT (RMHC) COIN COLLECTOR SEE DETAIL 5/A311 "APERTURE WPT" CALL 612-616-6886 TO ORDER |
| AL2 MITSUBISHI 4mm ALPOLIC METAL CLADDING - COLOUR "IRON-RED" | DO AUTOMATIC DOOR OPERATOR - MOUNTING HEIGHTS & LOCATION PER LOCAL CODES | R RAIN DIVERTER - SEE 5/A310 |
| AL3 MITSUBISHI 4mm ALPOLIC METAL CLADDING - COLOUR "DEEP GREY" | DS PREFINISHED ANODIZED ALUMINUM METAL DOWNSPOUT W/ DE-ICING HEAT CABLE - SEE ELECTRICAL | S McDONALD'S SIGNAGE BY OTHERS - UNDER SEPARATE PERMIT |
| AL4 VICWEST CORRUGATED METAL SIDING CL7040 (VERTICAL) - COLOUR "DEEP GREY" | FB CO ₂ FILL BOX | WC LONGBOARD - TONGUE & GROOVE 6" V-GROOVE PLANKS - "LIGHT NATIONAL WALNUT" |
| AL5 VICWEST CORRUGATED METAL SIDING CL7040 (HORIZONTAL) - COLOUR "DEEP GREY" | GP GREASE INTERCEPTOR PORT - SEE 1/P500 | Wx EXTERIOR WINDOW ASSEMBLY - SEE SHEET A600 |
| AL6 VICWEST CORRUGATED METAL SIDING CL7040 - COLOUR "BRIGHT WHITE" | L LIGHT FIXTURE - SEE ELECTRICAL | |
| AD PREFINISHED ANODIZED ALUMINUM METAL DOWNSPOUT AND SCUPPER W/ DE-ICING HEAT CABLE - SEE ELECTRICAL | MF1 METAL FASCIA COLOUR TO MATCH VICWEST "DEEP GREY" | |
| BL1 RICHVALE YORK CAMBRIDGE SERIES CONCRETE BLOCK - COLOUR "ONYX" WITH MORTAR COLOUR CMD15 "RAVEN" BY INTERSTAR | | |
| BL2 RICHVALE YORK CAMBRIDGE SERIES CONCRETE BLOCK - COLOUR "ARCTIC WHITE" | | |

DEVELOPMENT PERMIT DECISION RENDERED ON THIS PLAN



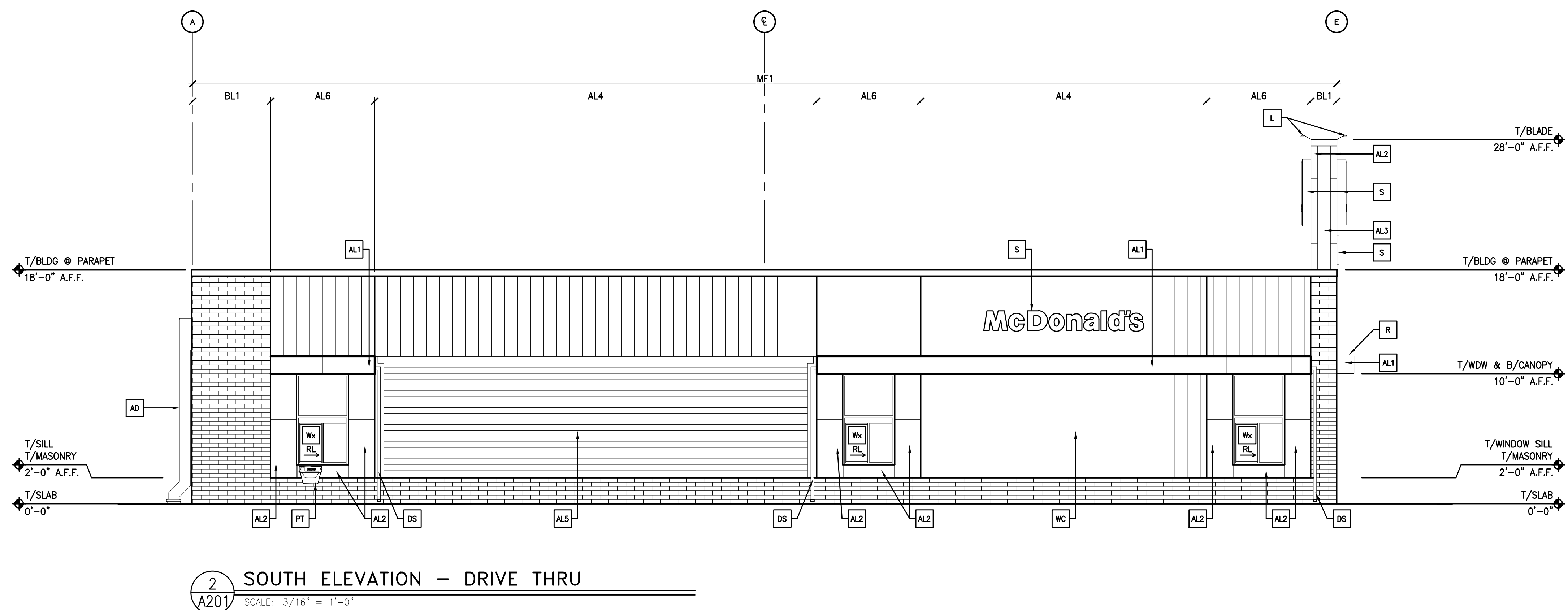
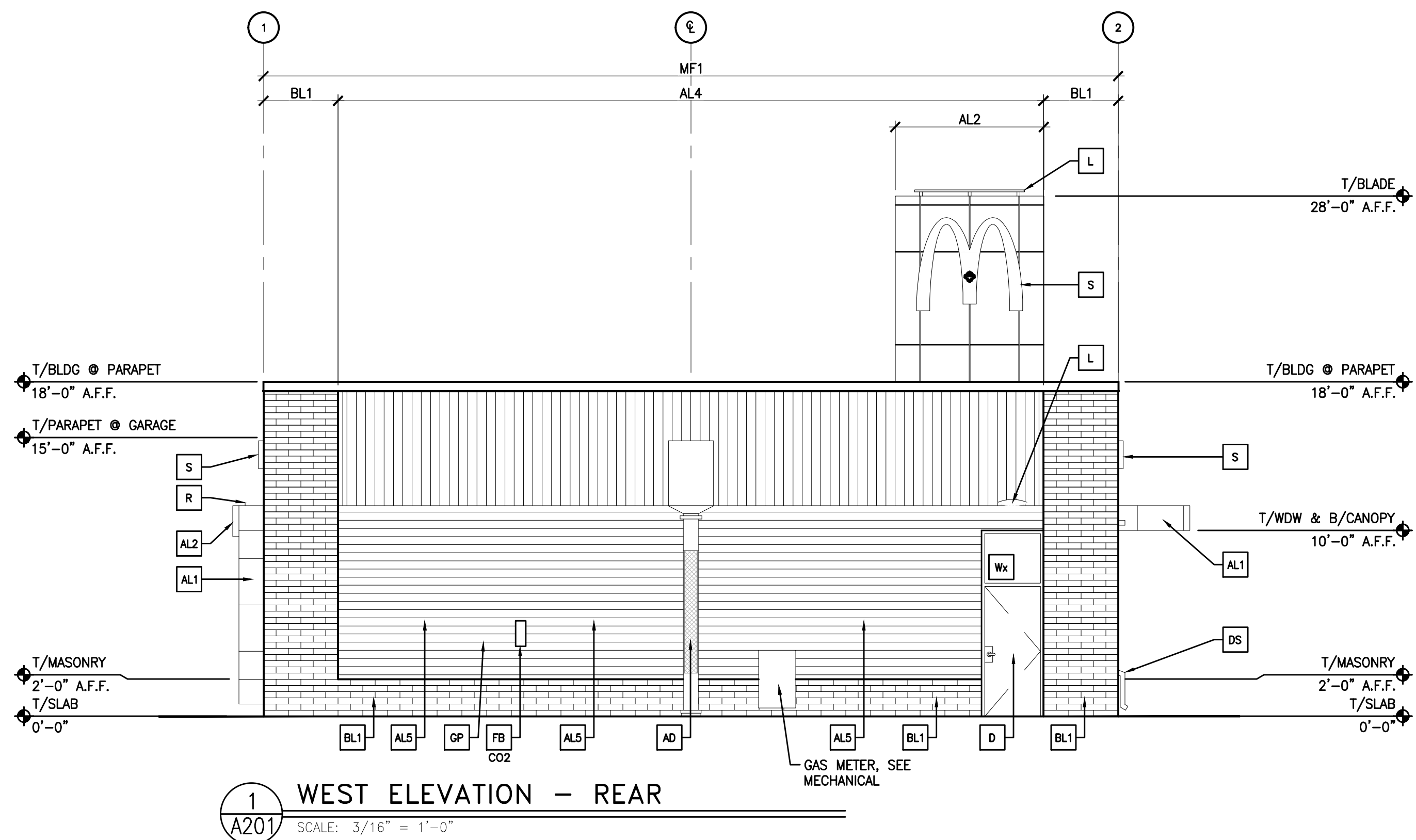
McDONALD'S RESTAURANT
NEW FREESTANDING BUILDING - R4.0
ALPINE PARK
CALGARY, AB

EXTERIOR ELEVATIONS

PREPARED FOR:
McDonald's Restaurants of Canada Limited
These drawings and specifications are the confidential and proprietary information of McDonald's Restaurants of Canada Limited and shall not be copied or reproduced without written authorization. The contract documents were prepared by the architect and shall be used only for the project, site or at a location, and are not suitable for use on a different project. The use of these drawings for any other project is unauthorized. Services of properly licensed architects and engineers, and other professionals, are required for all permit applications for this project. If not authorized.

DATE ISSUED	
DP Issue	5/30/25
DRAWN BY	KW
CHECKED BY	GJ
JOB NO.	25009

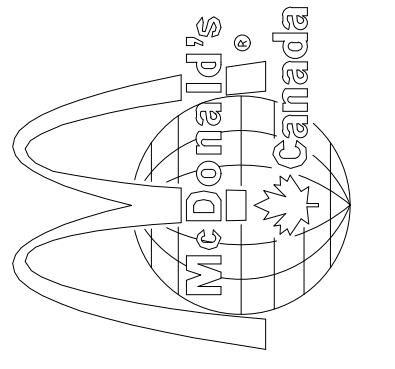
A200



KEY NOTES

- | | | |
|---|--|--|
| AL1 MITSUBISHI 4mm ALPOLIC METAL CLADDING - COLOUR "BONE WHITE" | D INSULATED HOLLOW METAL DOOR - PAINT COLOUR "PPG" McD 44 - CHARCOAL GREY | PT (RMHC) COIN COLLECTOR SEE DETAIL 5/A311 "APERTURE WPT" CALL 612-616-6886 TO ORDER |
| AL2 MITSUBISHI 4mm ALPOLIC METAL CLADDING - COLOUR "IRON-RED" | DO AUTOMATIC DOOR OPERATOR - MOUNTING HEIGHTS & LOCATION PER LOCAL CODES | R RAIN DIVERTER - SEE 5/A310 |
| AL3 MITSUBISHI 4mm ALPOLIC METAL CLADDING - COLOUR "DEEP GREY" | DS PREFINISHED ANODIZED ALUMINUM METAL DOWNSPOUT W/ DE-ICING HEAT CABLE - SEE ELECTRICAL | S McDONALD'S SIGNAGE BY OTHERS - UNDER SEPARATE PERMIT |
| AL4 VICWEST CORRUGATED METAL SIDING CL7040 (VERTICAL) - COLOUR "DEEP GREY" | FB CO ₂ FILL BOX | WC LONGBOARD - TONGUE & GROOVE 6" V-GROOVE PLANKS - "LIGHT NATIONAL WALNUT" |
| AL5 VICWEST CORRUGATED METAL SIDING CL7040 (HORIZONTAL) - COLOUR "DEEP GREY" | GP GREASE INTERCEPTOR PORT - SEE 1/P500 | Wx EXTERIOR WINDOW ASSEMBLY - SEE SHEET A600 |
| AL6 VICWEST CORRUGATED METAL SIDING CL7040 - COLOUR "BRIGHT WHITE" | L LIGHT FIXTURE - SEE ELECTRICAL | |
| AD PREFINISHED ANODIZED ALUMINUM METAL DOWNSPOUT AND SCUPPER W/ DE-ICING HEAT CABLE - SEE ELECTRICAL | MF1 METAL FASCIA COLOUR TO MATCH VICWEST "DEEP GREY" | |
| BL1 RICHVALE YORK CAMBRIDGE SERIES CONCRETE BLOCK - COLOUR "ONYX" WITH MORTAR COLOUR CMD15 "RAVEN" BY INTERSTAR | | |
| BL2 RICHVALE YORK CAMBRIDGE SERIES CONCRETE BLOCK - COLOUR "ARCTIC WHITE" | | |

DEVELOPMENT
PERMIT
DECISION
RENDERED
ON THIS PLAN



PREPARED FOR:
McDonald's Restaurants of Canada Limited
These drawings and specifications are the confidential and proprietary information of McDonald's Restaurants of Canada Limited and shall not be copied or reproduced without written authorization. The contract documents were prepared by the architect and shall be used only for the project, site or at a location, and are not suitable for use on a different project. The use of these drawings for any other project without the written consent of the architect and engineers is prohibited. The architect and engineers accept no responsibility for any project that is not authorized.

DATE ISSUED	
DP Issue	5/30/25
DRAWN BY	KW
CHECKED BY	GJ
JOB NO.	25009