

19 ST NW, MULTI FAMILY ---- ISSUED FOR DEVELOPMENT PERMIT

LEGAL DESCRIPTION: BLOCK 04 LOTS 29 & 30

MUNICIPAL ADDRESS: 2504 19 St NW, Calgary, AB

DRAWING LIST

ARCHITECTURAL:

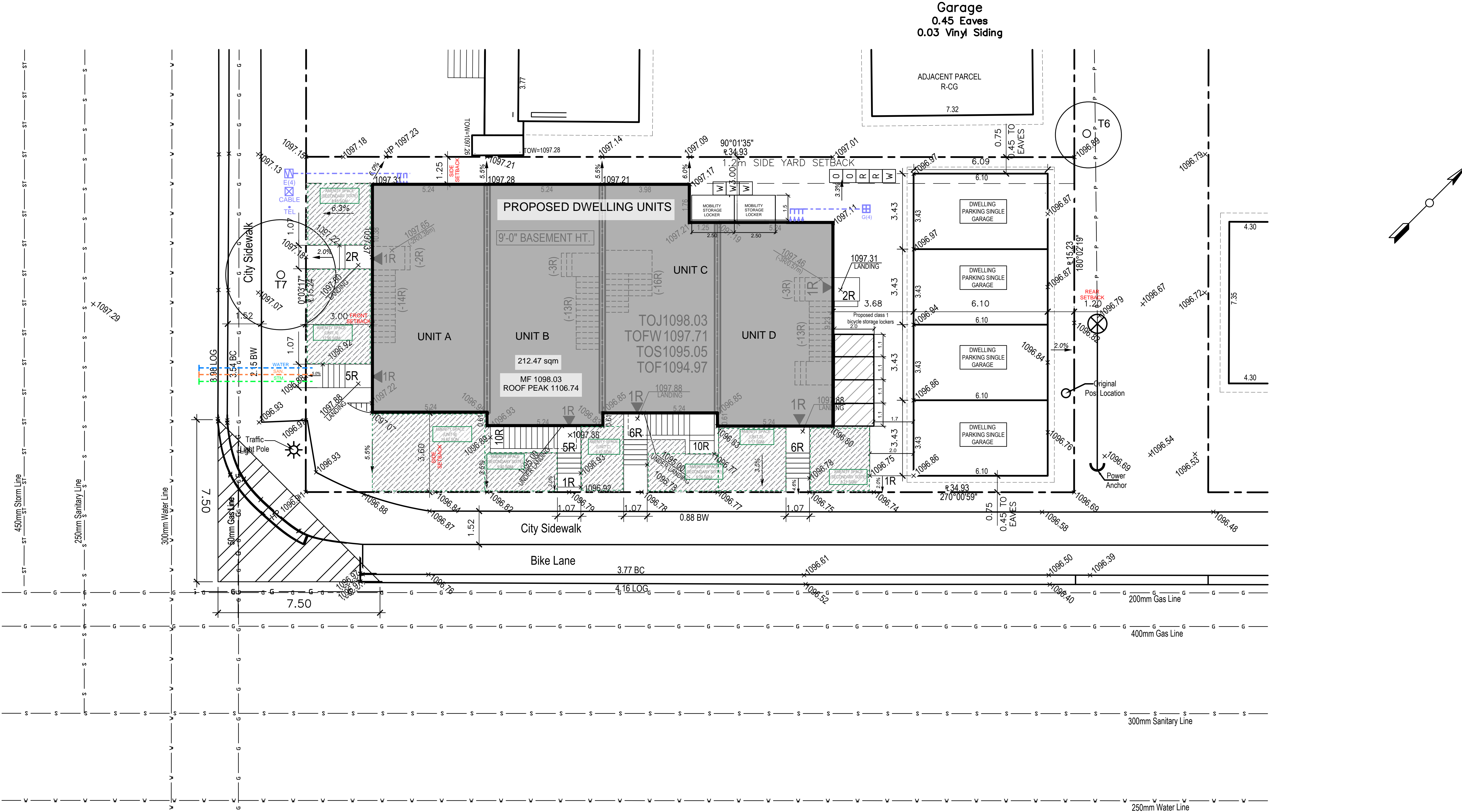
- A-0.0 COVER SHEET
- A-0.1 CONSTRUCTION NOTE
- A-0.2 SITE PHOTO

- A-1.1 SITE PLAN
- A-1.2 SITE BLOCK PLAN
- A-1.3 LANDSCAPE PLAN

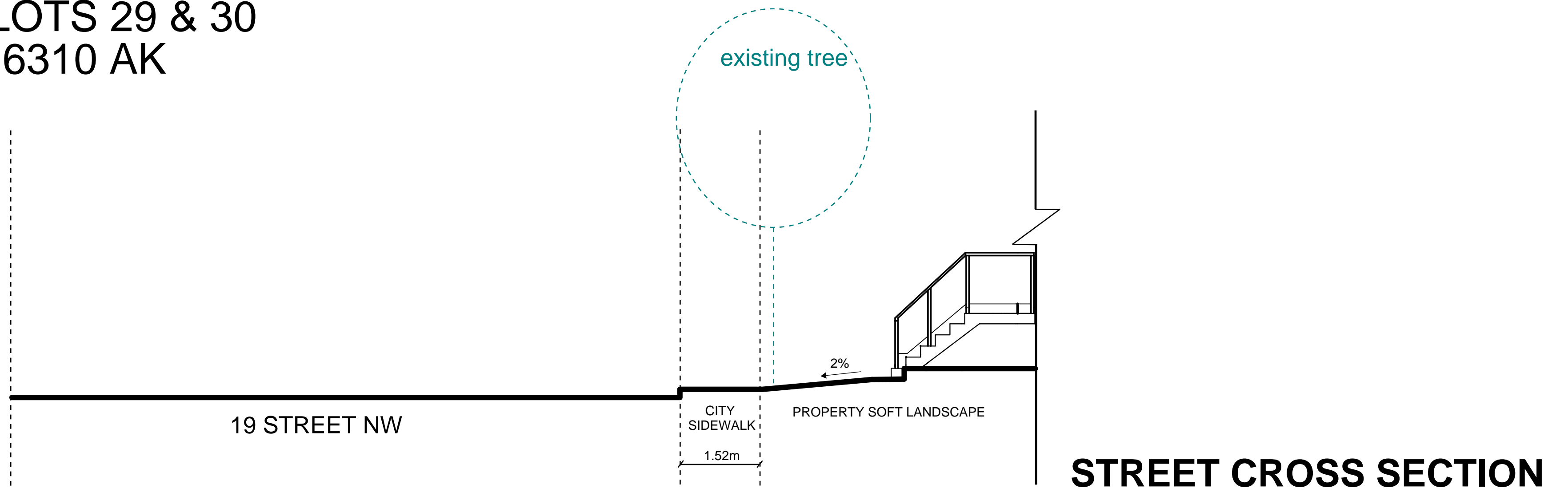
- A-2.1 BASEMENT FLOOR PLAN
- A-2.2 MAIN FLOOR PLAN
- A-2.3 SECOND FLOOR PLAN
- A-2.4 THRID FLOOR PLAN
- A-2.5 GARAGE FLOOR PLAN & SECTION PLAN
- A-2.6 GARAGE ELEVATION

- A-3.1 SOUTH ELEVATION
- A-3.2 NORTH ELEVATION
- A-3.3 WEST ELEVATION
- A-3.4 EAST ELEVATION
- A-3.5 CROSS SECTION A





**BLOCK 4 LOTS 29 & 30
PLAN 6310 AK**



Revision list:

1 ISSUED FOR DEVELOPMENT PERMIT 2025-MAR-14
Issue Chart

CALGARY, AB

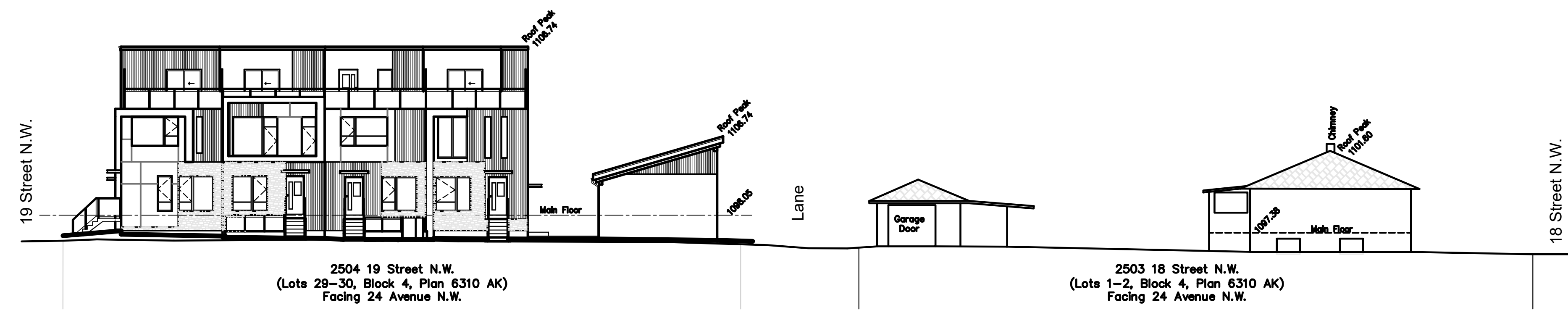
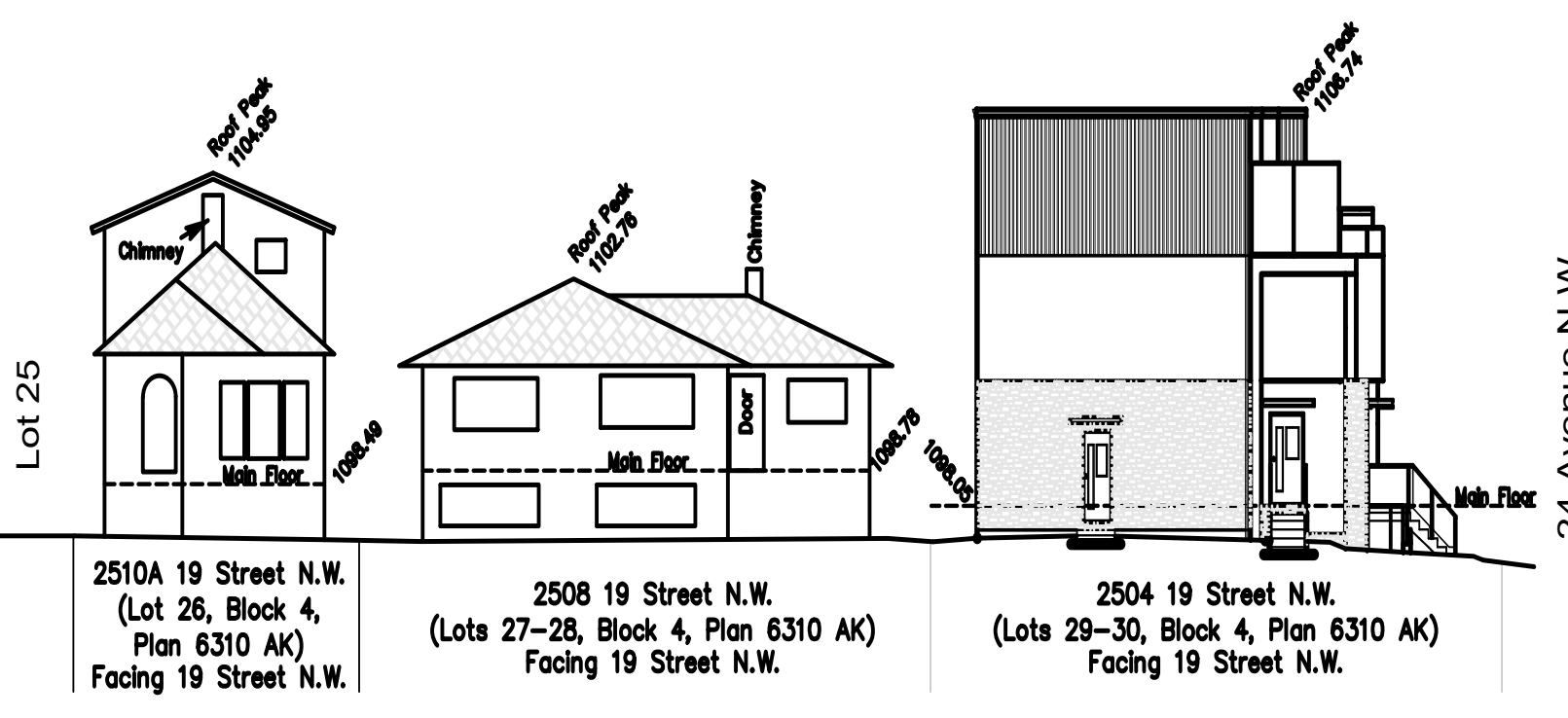
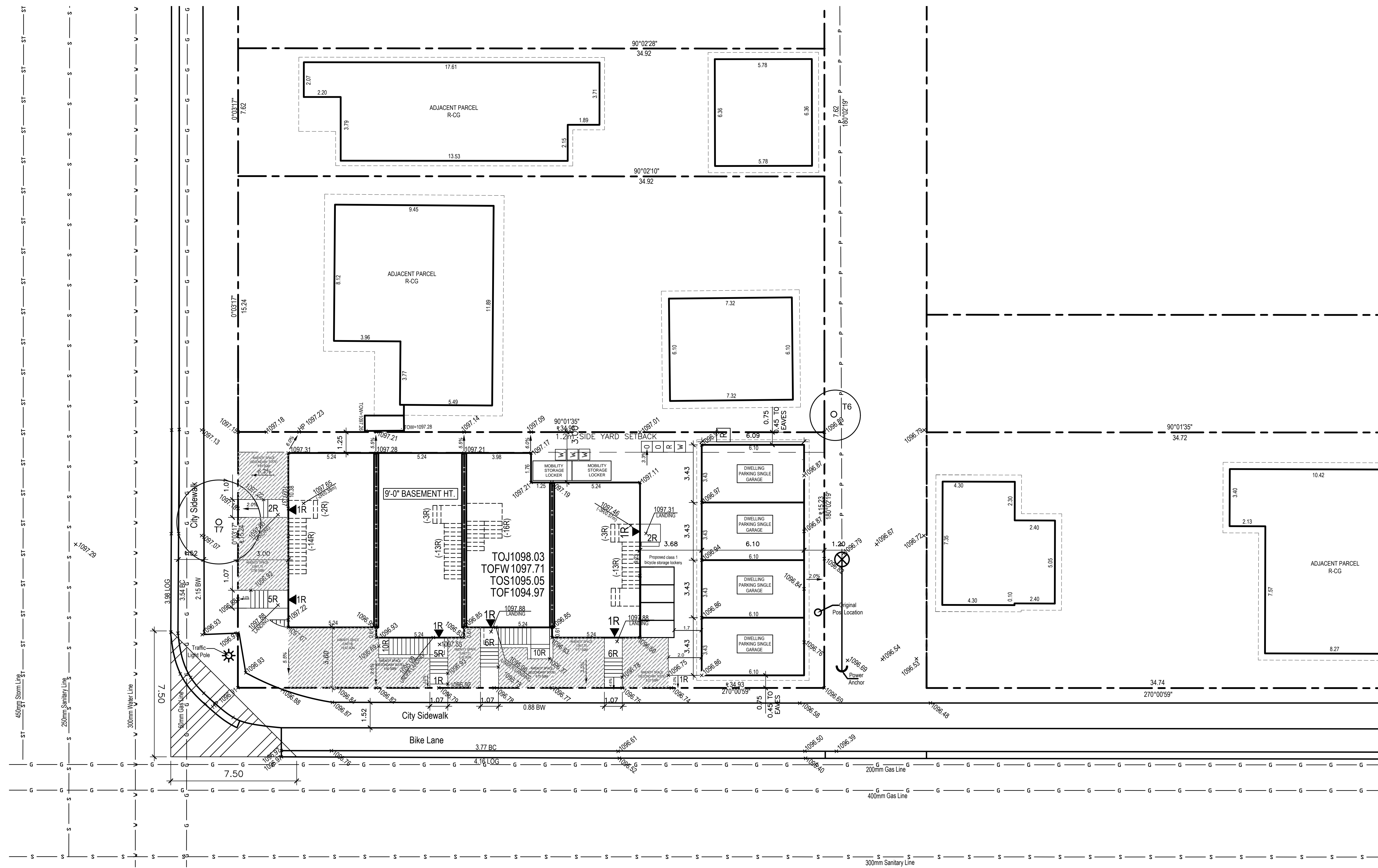
**MULTI FAMILY DEVELOPMENT
2504 19 ST NW, CALGARY**

Project No. _____
Scale **AS NOTED**
Drawn By _____
Checked By _____

SITE PLAN

A1.1

STREET CROSS SECTION



MULTI FAMILY DEVELOPMENT
2504 19 ST NW, CALGARY

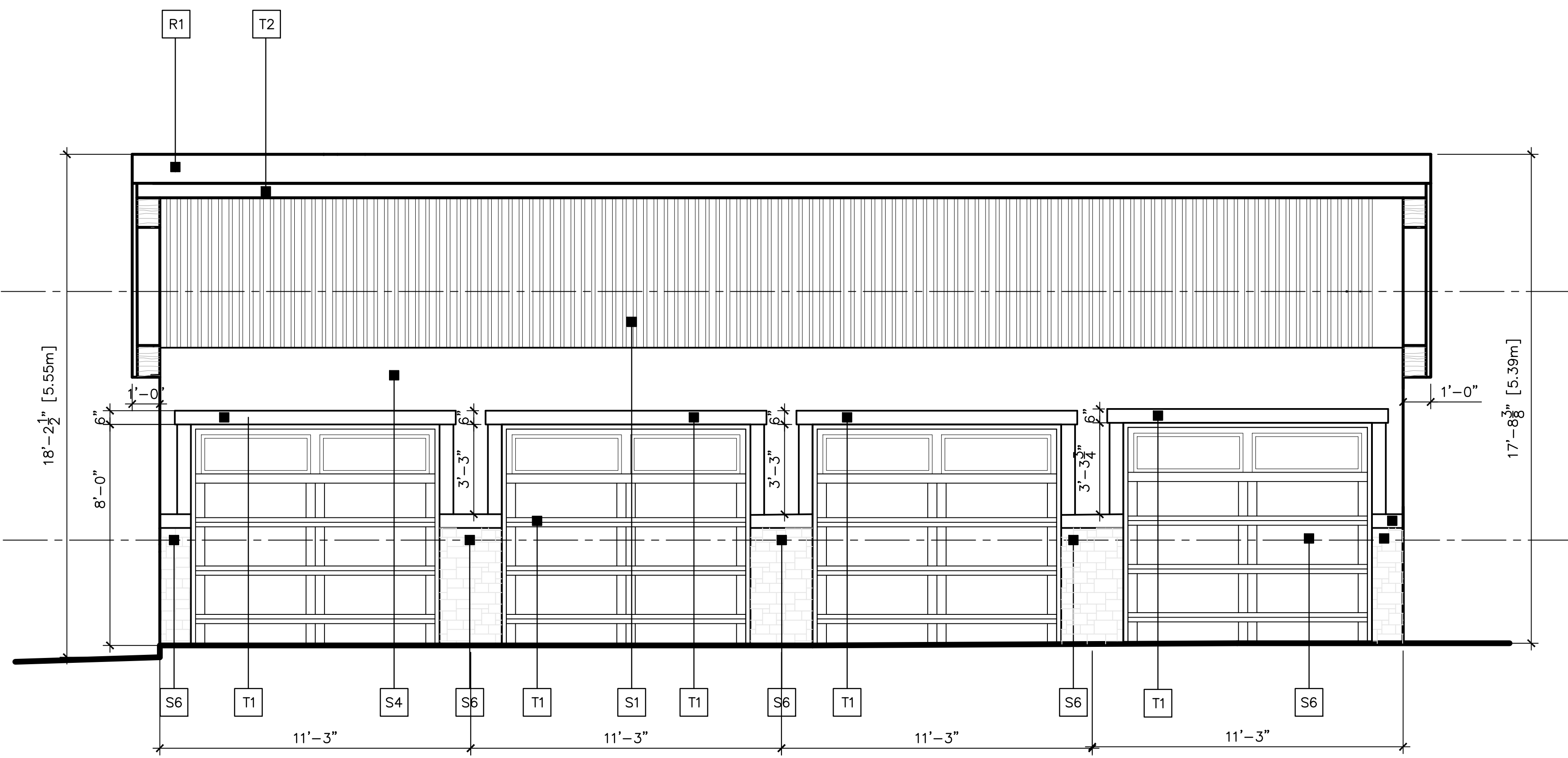
BLOCK 4 LOTS 29 & 30

PROPOSED BLOCK PLAN

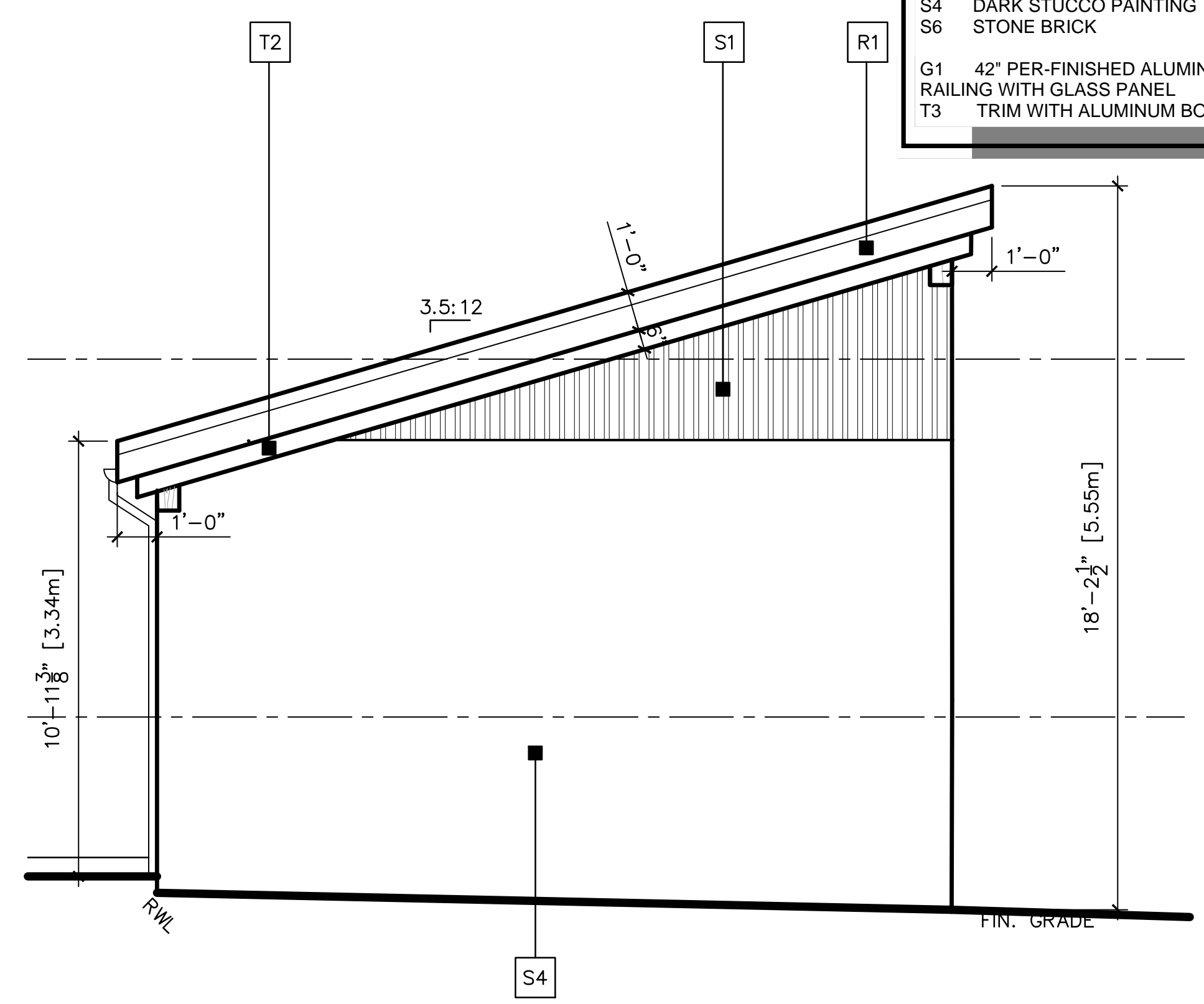
A1.1

Revision list:

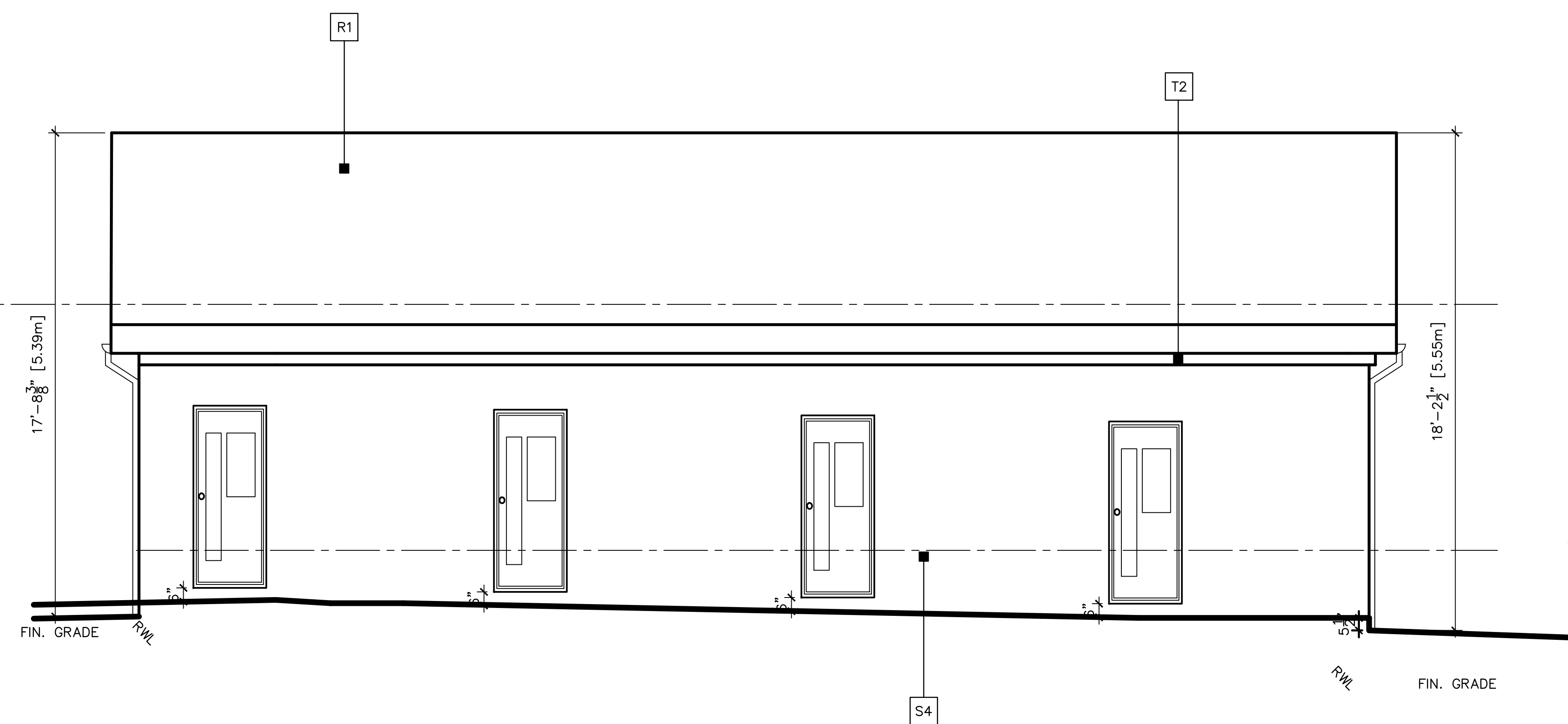
MATERIAL LEGEND	
R1	TYP. TRUSS ROOF
R2	GLASS FLAT ROOF
S1	PLASTIC WOOD COMPOSITE
S3	DARK BLACK ALUMINUM BOARD
S4	DARK STUCCO PAINTING
S6	STONE BRICK
G1	42" PER-FINISHED ALUMINUM RAILING WITH GLASS PANEL
T3	TRIM WITH ALUMINUM BOARD



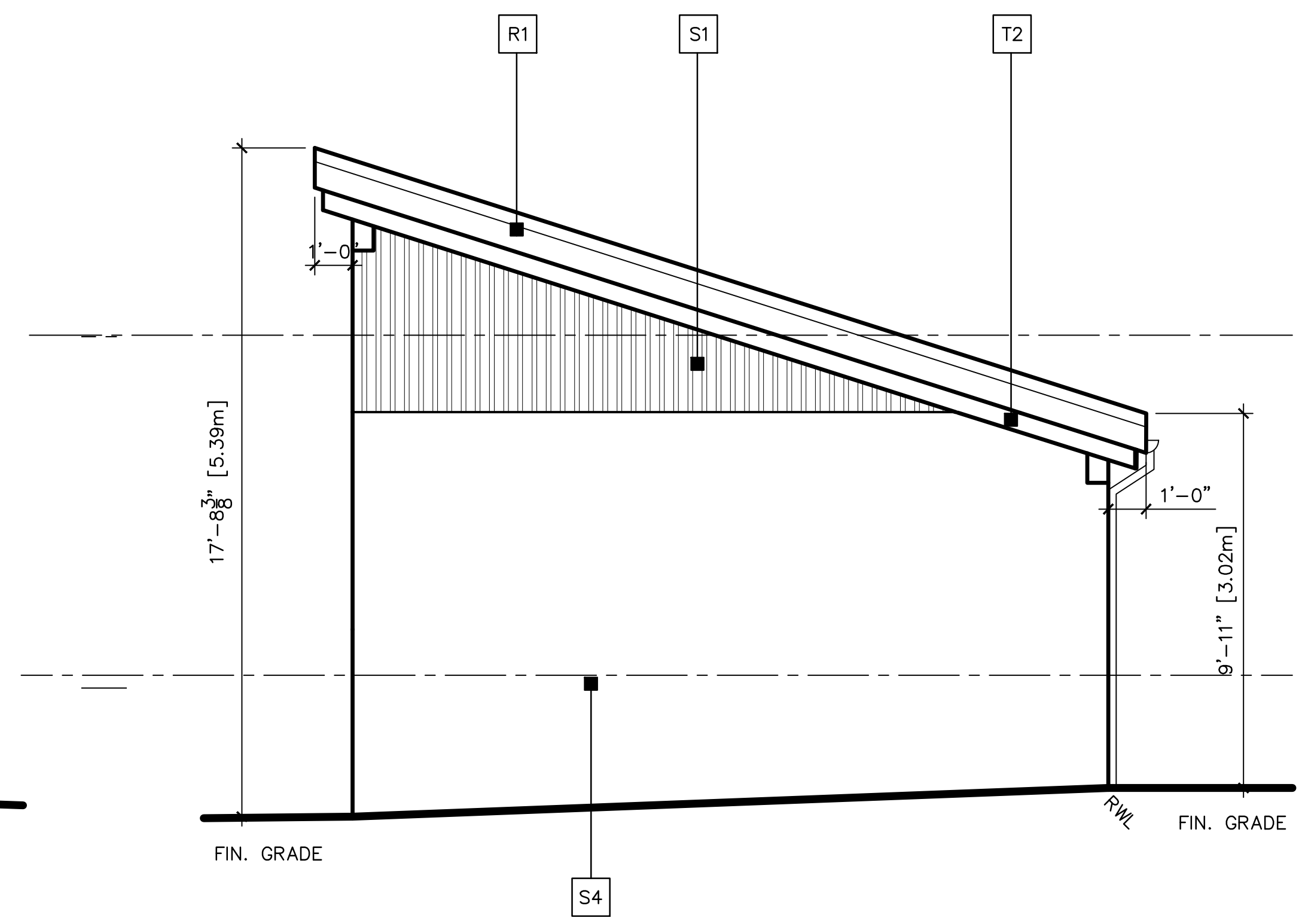
EAST ELEVATION
SCALE - 3/16" = 1'-0"



SOUTH ELEVATION
SCALE - 3/16" = 1'-0"



WEST ELEVATION
SCALE - 3/16" = 1'-0"



NORTH ELEVATION
SCALE - 3/16" = 1'-0"

Issue Chart

CALGARY, AB

MULTI FAMILY DEVELOPMENT
2504 19 ST NW, CALGARY

Project No. _____
Scale **3/16" = 1'-0"**
Drawn By _____
Checked By _____

GARAGE ELEVATION

A2.6

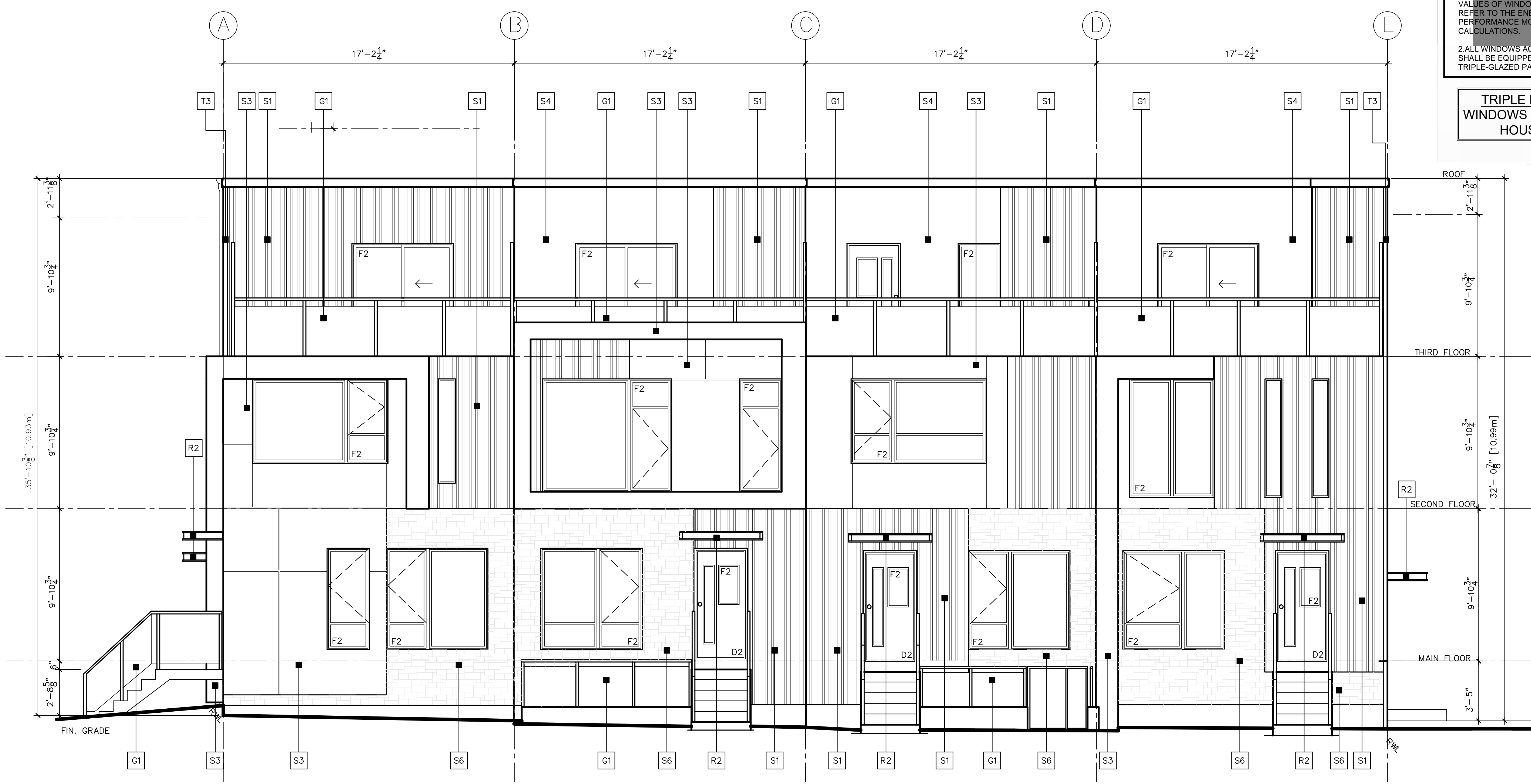
MATERIAL LEGEND

- R2 GLASS FLAT ROOF
- S1 PLASTIC WOOD COMPOSITE
- S3 DARK BLACK ALUMINUM BOARD
- S4 DARK STUCCO PAINTING
- S6 STONE BRICK
- G1 42" PER-FINISHED ALUMINUM RAILING WITH GLASS PANEL
- T3 TRIM WITH ALUMINUM BOARD

ELEVATION NOTE

1. FOR THE THERMAL CONDUCTIVITY VALUES OF WINDOWS AND DOORS, REFER TO THE ENERGY PERFORMANCE MODEL CALCULATIONS.
2. ALL WINDOWS ACROSS ALL UNITS SHALL BE EQUIPPED WITH TRIPLE-GLAZED PANES.

**TRIPLE PANE
WINDOWS ON THIS
HOUSE**



SOUTH ELEVATION
SCALE - 3/16" = 1'-0"

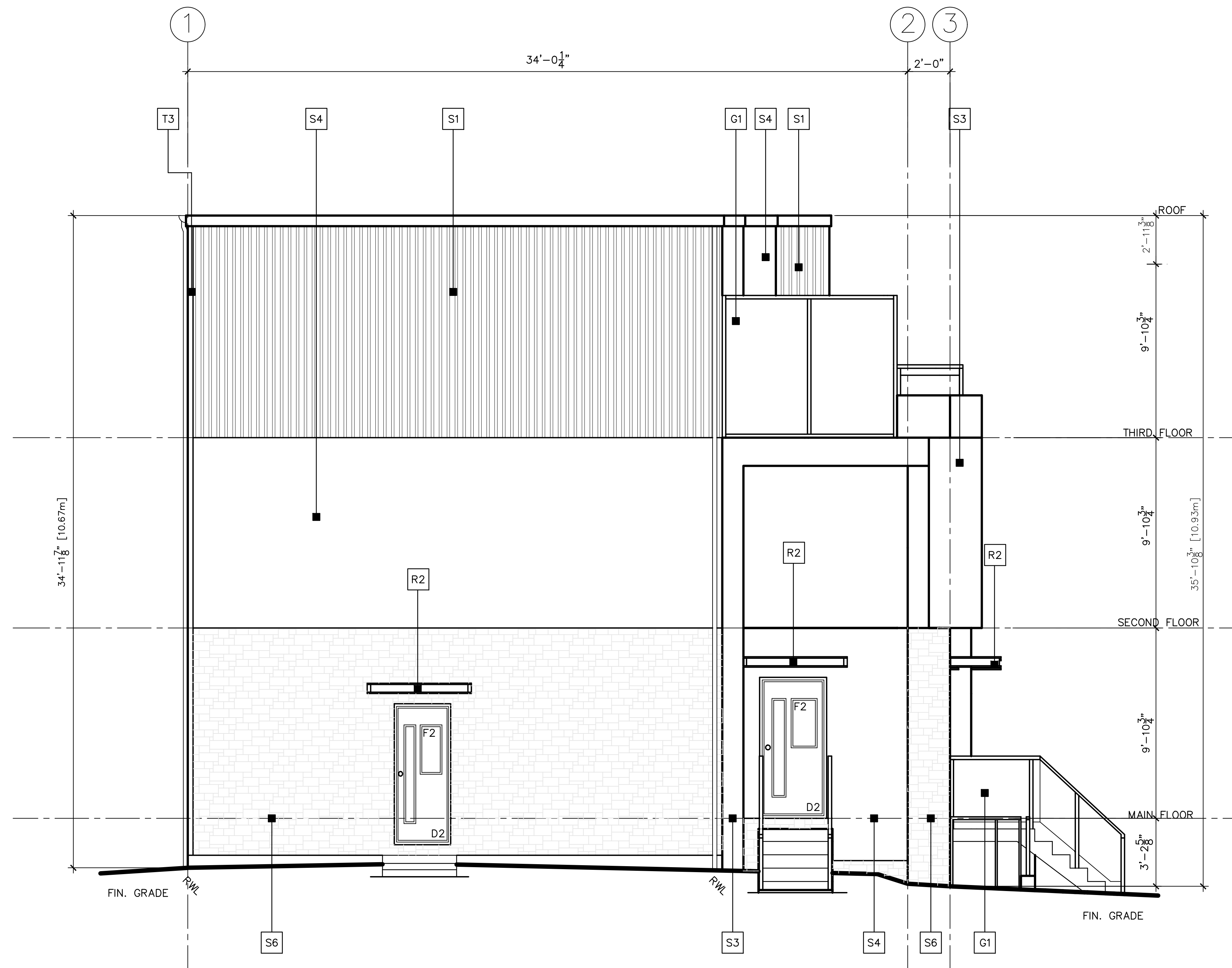
Issue Chart

CALGARY, AB

**MULTI FAMILY DEVELOPMENT
2504 19 ST NW, CALGARY**

Project No. _____
Scale **3/16" = 1'-0"**
Drawn By _____
Checked By _____

RIGHT ELEVATION
A3.1



WEST ELEVATION
SCALE - 3/16" = 1'-0"

MATERIAL LEGEND

- R2 GLASS FLAT ROOF
- S1 PLASTIC WOOD COMPOSITE
- S3 DARK BLACK ALUMINUM BOARD
- S4 DARK STUCCO PAINTING
- S6 STONE BRICK
- G1 42" PER-FINISHED ALUMINUM RAILING WITH GLASS PANEL
- T3 TRIM WITH ALUMINUM BOARD

ELEVATION NOTE

1. FOR THE THERMAL CONDUCTIVITY VALUES OF WINDOWS AND DOORS, REFER TO THE ENERGY PERFORMANCE MODEL CALCULATIONS.
2. ALL WINDOWS ACROSS ALL UNITS SHALL BE EQUIPPED WITH TRIPLE-GLAZED PANES.

**TRIPLE PANE
WINDOWS ON THIS
HOUSE**

Issue Chart

CALGARY, AB

**MULTI FAMILY DEVELOPMENT
2504 19 ST NW, CALGARY**

Project No.

Scale **3/16" = 1'-0"**

Drawn By

Checked By

ELEVATIONS

FRONT ELEVATION

A3.3

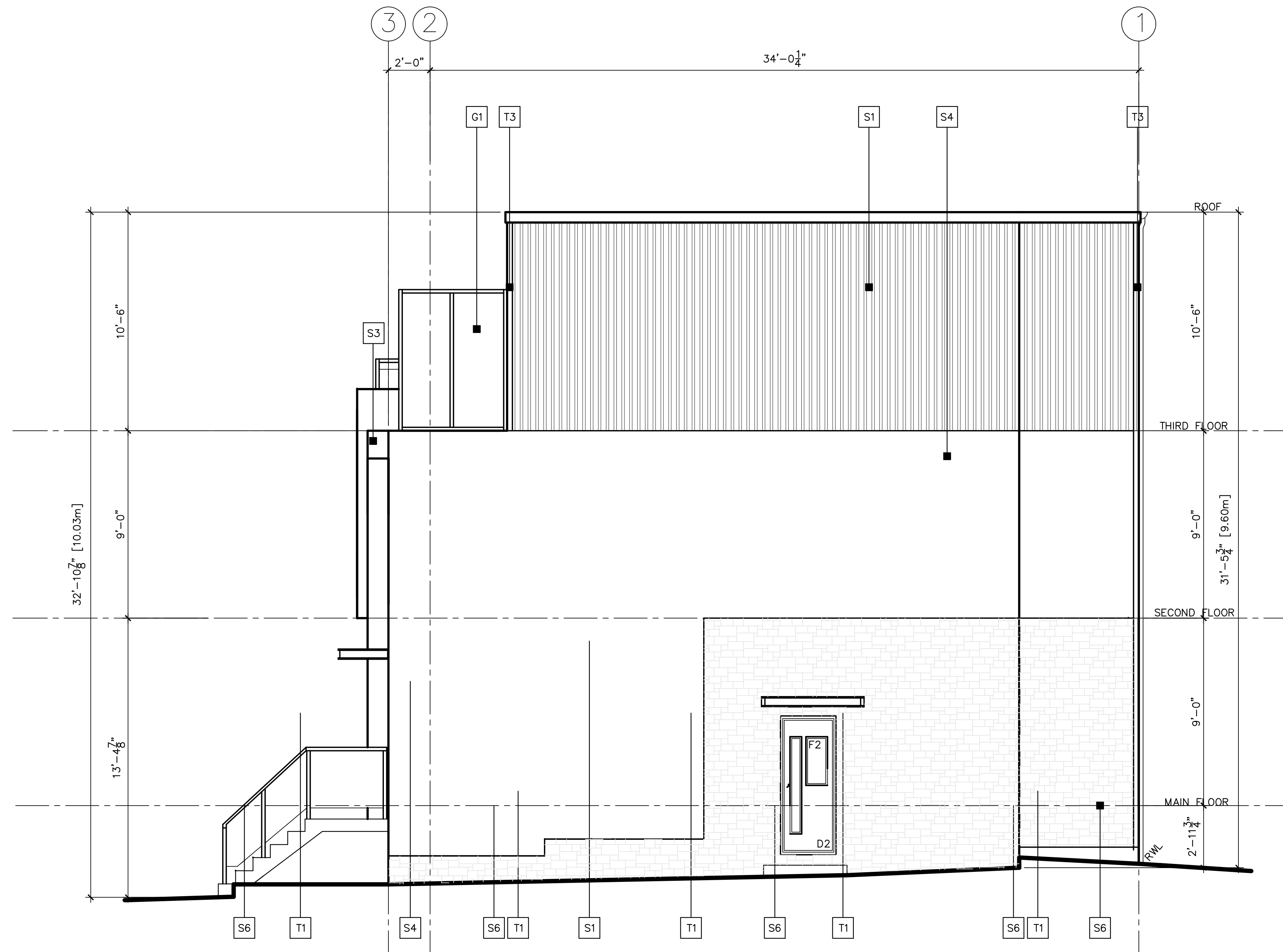
MATERIAL LEGEND

- R2 GLASS FLAT ROOF
- S1 PLASTIC WOOD COMPOSITE
- S3 DARK BLACK ALUMINUM BOARD
- S4 DARK STUCCO PAINTING
- S6 STONE BRICK
- G1 42" PER-FINISHED ALUMINUM RAILING WITH GLASS PANEL
- T3 TRIM WITH ALUMINUM BOARD

ELEVATION NOTE

1. FOR THE THERMAL CONDUCTIVITY VALUES OF WINDOWS AND DOORS, REFER TO THE ENERGY PERFORMANCE MODEL CALCULATIONS.
2. ALL WINDOWS ACROSS ALL UNITS SHALL BE EQUIPPED WITH TRIPLE-GLAZED PANES.

TRIPLE PANE WINDOWS ON THIS HOUSE



EAST ELEVATION
SCALE - 3/16" = 1'-0"

Issue Chart

CALGARY, AB

MULTI FAMILY DEVELOPMENT
2504 19 ST NW, CALGARY

Project No. _____
Scale **3/16" = 1'-0"**
Drawn By _____
Checked By _____

ELEVATIONS

REAR ELEVATION
A3.4